



BCC DS
RECEIVED
21/05/2026
APPLICATION REF
A006835434

Greville Buildings A & B

60 Bridge Street, Woolloowin

STATEMENT OF LANDSCAPE DESIGN INTENT
MAY 2026



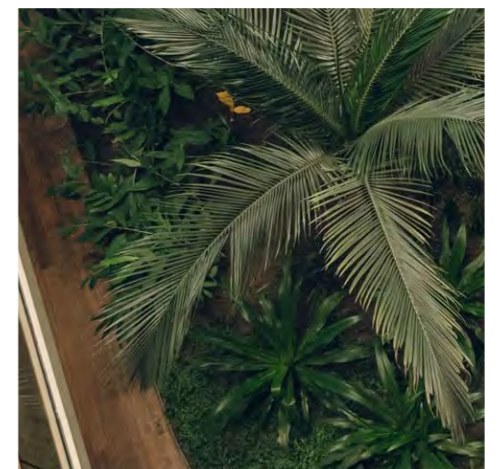
BCC DS
RECEIVED
21/05/2026
APPLICATION REF
A006835434

Issue	Date	Description	Checked
01	14 / 03 / 2025	Preliminary Issue [Draft]	GP
02	02 / 04 / 2025	Preliminary Issue [Draft]	GP
03	16 / 05 / 2025	For DA Approval	GP
04	31 / 07 / 2025	For DA Approval	GP
05	27 / 11 / 2025	For DA Approval	GP
06	13 / 05 / 2026	For DA Approval	GP
07	20 / 05 / 2026	For DA Approval	GP

URBIS Ltd

Level 32
300 George Street
Brisbane QLD 4000
ABN 50 105 256 228
T +617 3007 3800

urbis.com.au

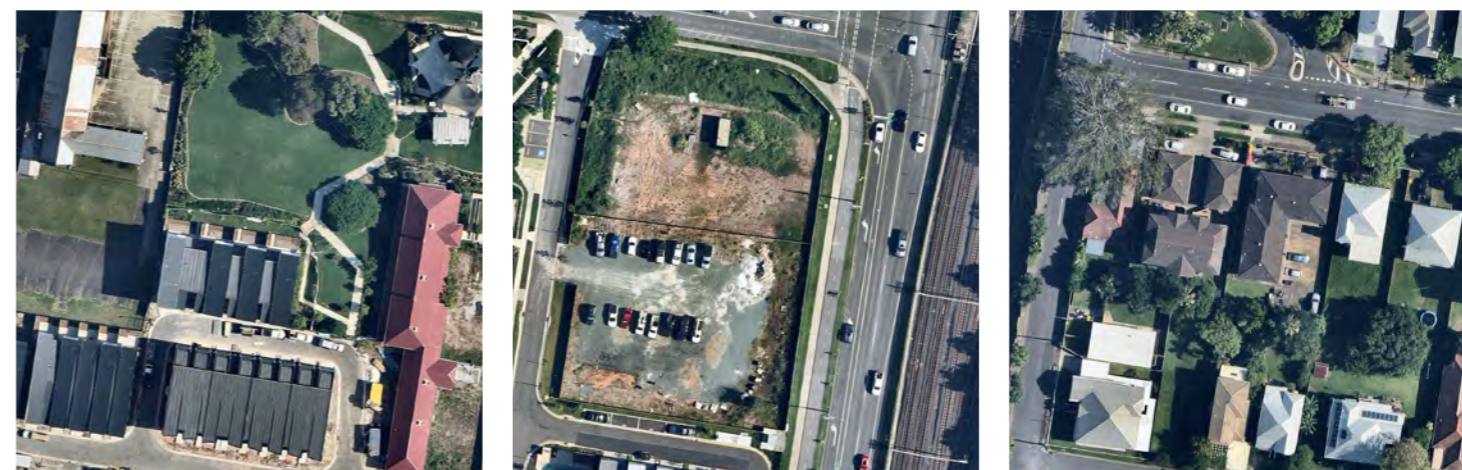


Contents

1.0	Site Understanding	4		
1.1	Site Context	5		
1.2	Existing Contextual Elements – Built	6		
1.3	Existing Contextual Elements – Soft	7		
1.4	Site History	8		
2.0	Landscape Vision	9		
2.1	Landscape Vision	10		
2.2	Landscape Vision	11		
2.3	Design Principles	12		
3.0	Landscape Design	14		
3.1	Masterplan	15		
3.2	Ground Level Detail Plan	16		
3.3	Level 01	17		
3.4	Level 02	18		
3.5	Level 02 - Detail Plan	19		
3.6	Building A Typical Tower - Levels 03 to 13	20		
3.7	Building B Typical Tower - Levels 03 to 11	21		
3.8	Building B Rooftop Terrace	22		
3.9	Planting Depths - Ground	23		
3.10	Planting Depths - Level 01 and 02	24		
3.11	Planting Depths - Typical Tower	25		
3.12	Planting Depths - Rooftop Terrace	26		
4.0	Design Details	29		
4.1	Character Images	30		
4.2	Planting Palette	31		
5.0	Maintenance Information	33		
5.1	Maintenance Access - Resident Carpark	34		
5.2	Maintenance Access - Residential Floors	35		
5.3	Maintenance Access - Rooftop Terrace	36		

Part One

Site Understanding



Site Understanding
1.1 Site Context

**BCC DS
RECEIVED**
21/05/2026
APPLICATION REF
A006835434



1.2 Existing Contextual Elements – Built

**BCC DS
RECEIVED**
21/05/2026
APPLICATION REF
A006835434



1.3 Existing Contextual Elements – Soft

BCC DS
RECEIVED
21/05/2026
APPLICATION REF
A006835434



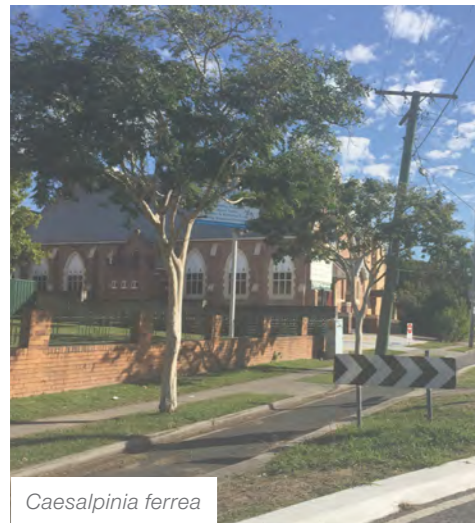
Delonix regia



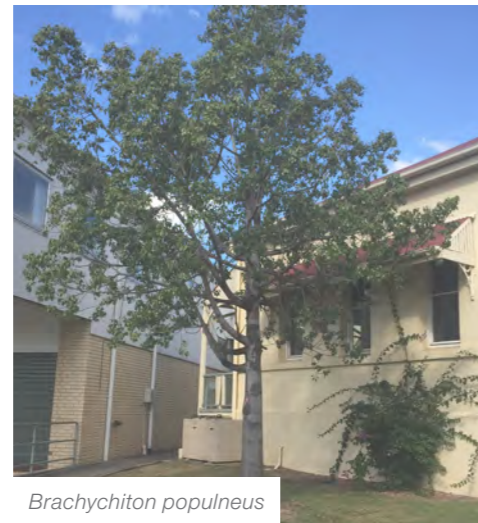
Caesalpinia ferrea



Corymbia torrelliana



Caesalpinia ferrea



Brachychiton populneus



Ficus benjamina



Jacaranda mimosifolia



Ficus hillii

Site Understanding
1.4 Site History

BCC DS
RECEIVED
21/05/2026
APPLICATION REF
A006835434



Part Two

Landscape Vision





Private



Heritage



Communal Streets & Pockets



Public Parks



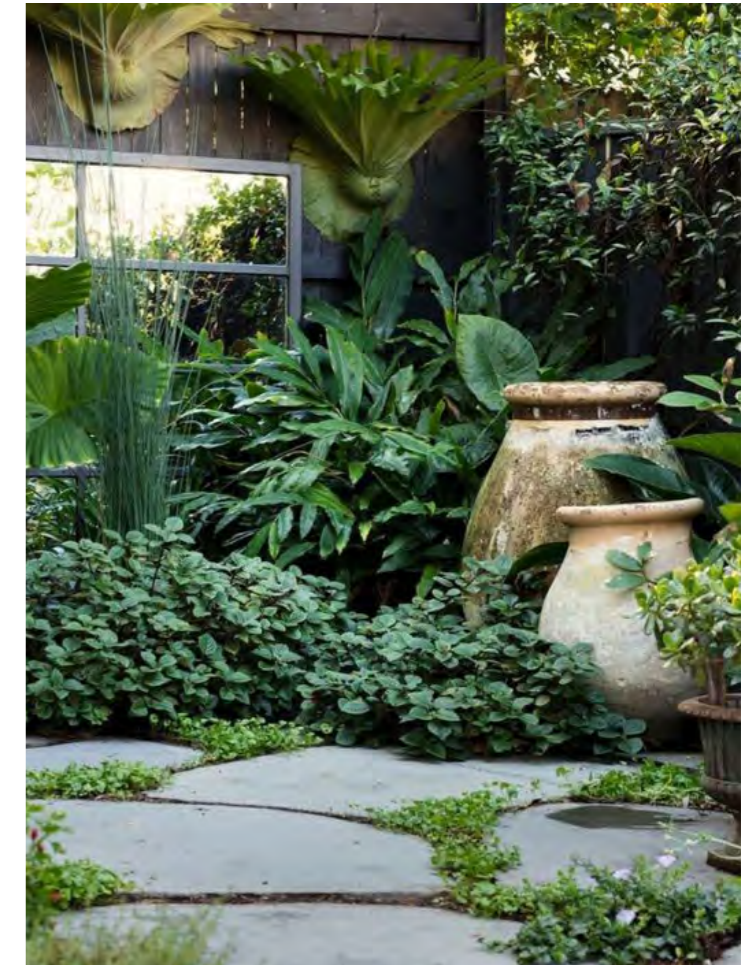
Envelope and occupy the architecture



Provide a bridge between heritage and contemporary landscape



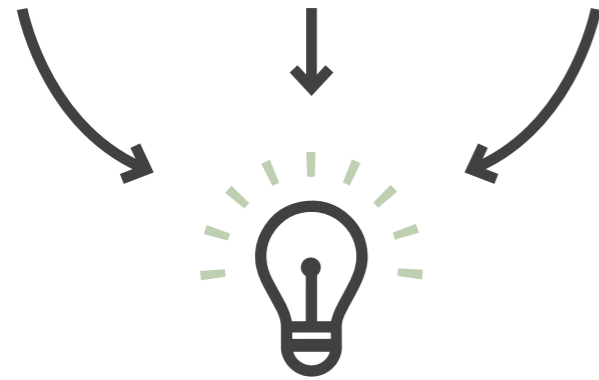
Variations in texture and scale



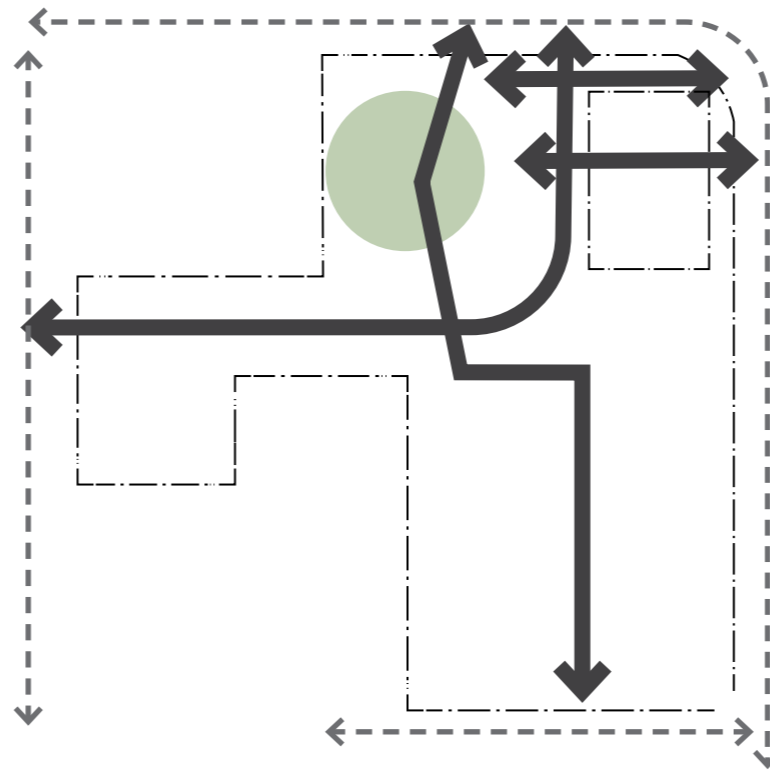
To compose planting that is responsive to *microclimatic* conditions and aspect

Landscape Vision
2.3 Design Principles

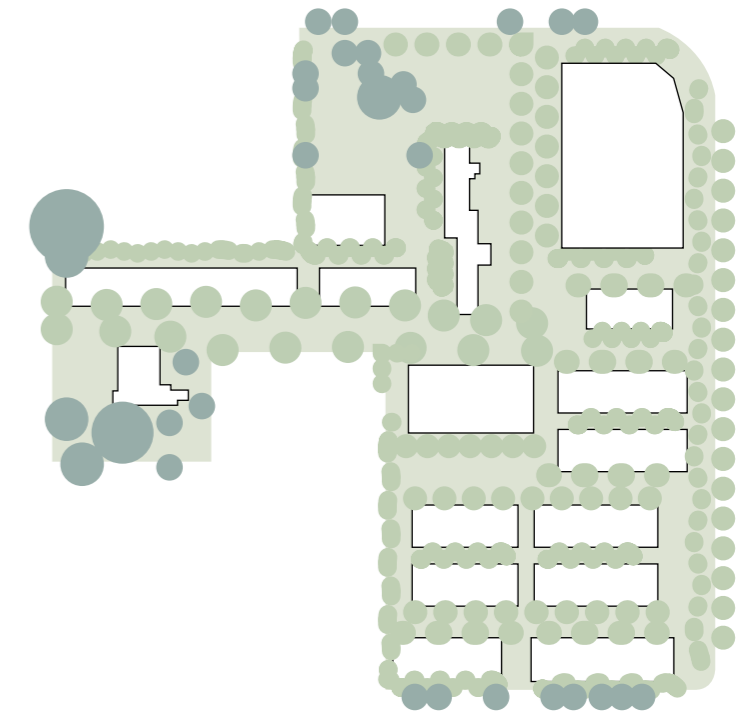
BCC DS
RECEIVED
21/05/2026
APPLICATION REF
A006835434



Embracing The History



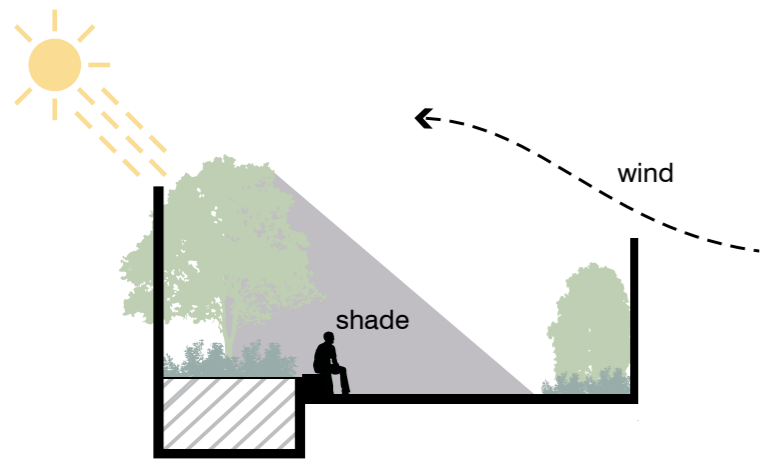
Permeability and Access



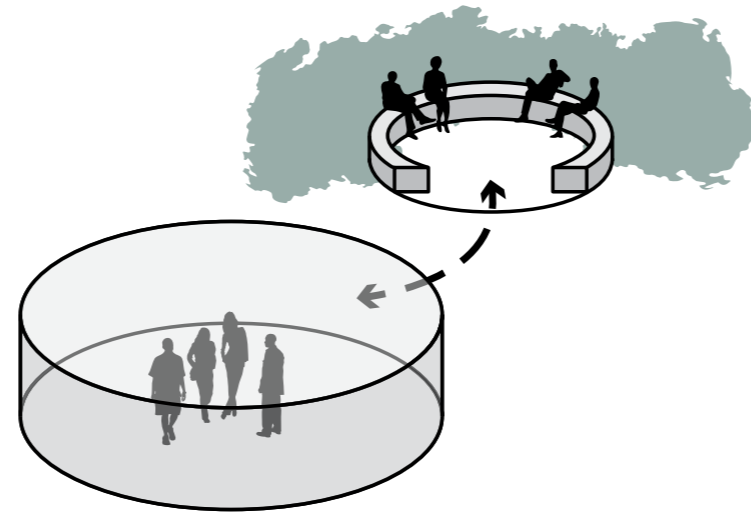
Buildings Within The Green

Landscape Vision
2.4 Design Principles

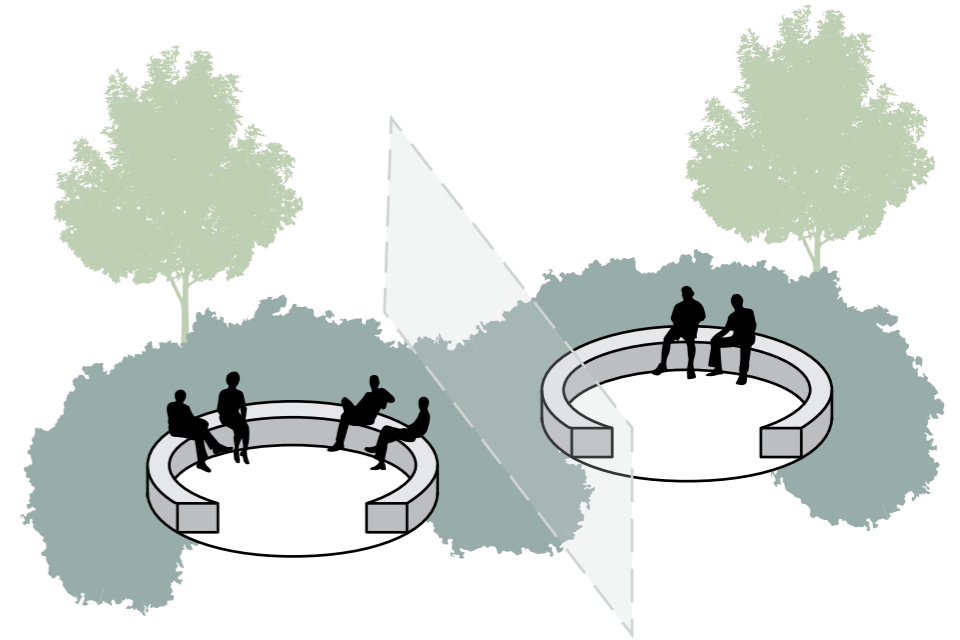
BCC DS
RECEIVED
21/05/2026
APPLICATION REF
A006835434



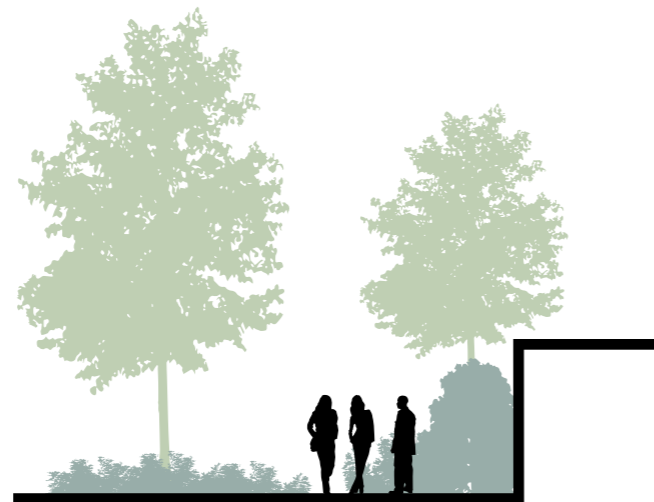
Provide Microclimatic Niche Areas



Blended Indoor / Outdoor



Generous deep planting



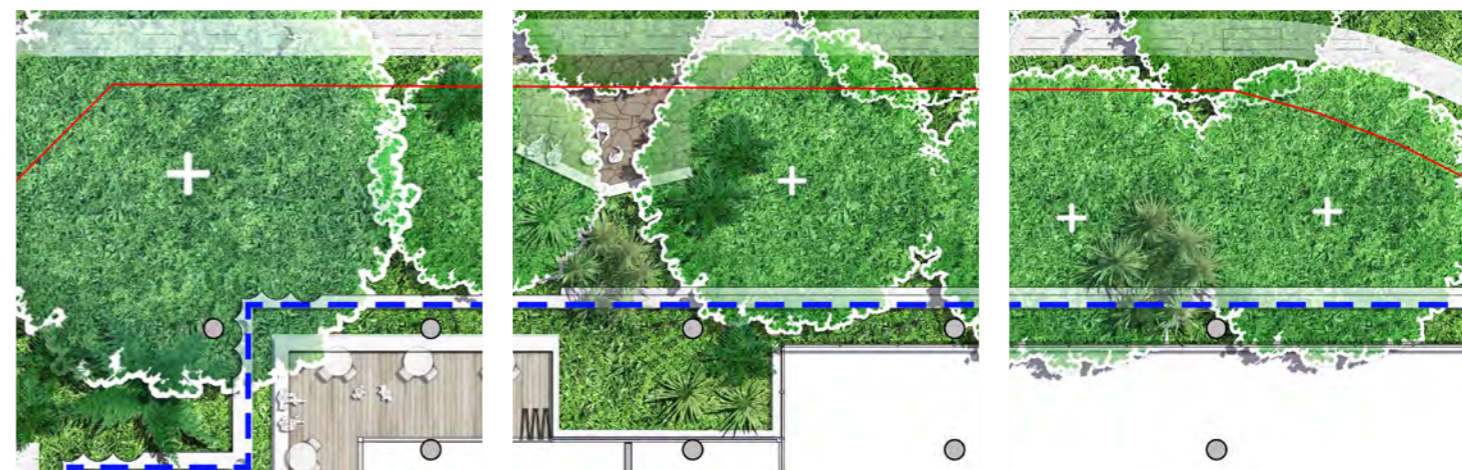
Soften neighbouring edges



Seamless blend of heritage and contemporary materials

Part Three

Landscape Design

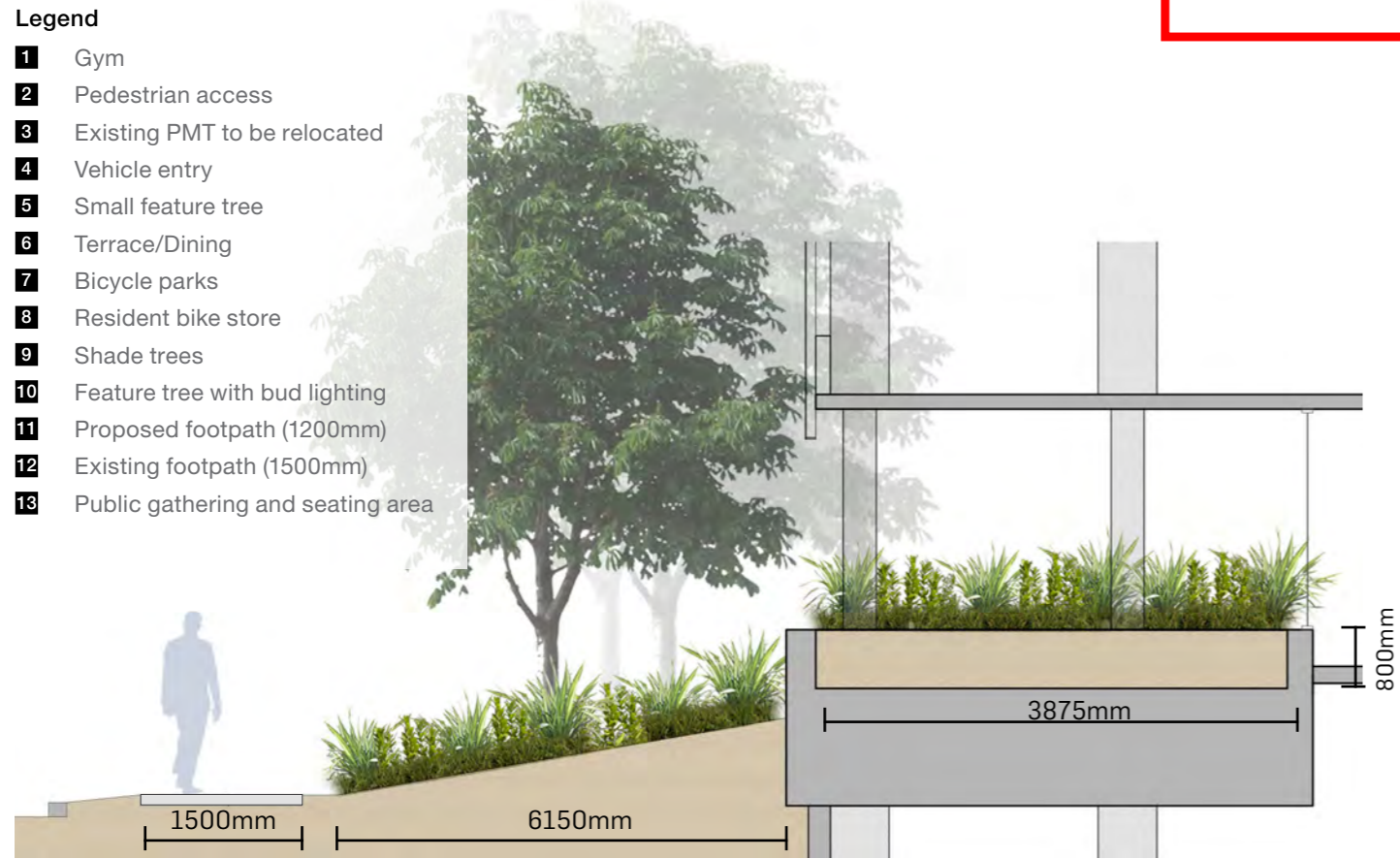


Landscape Design
3.1 Masterplan

**BCC DS
 RECEIVED**
 21/05/2026
APPLICATION REF
 A006835434

Legend

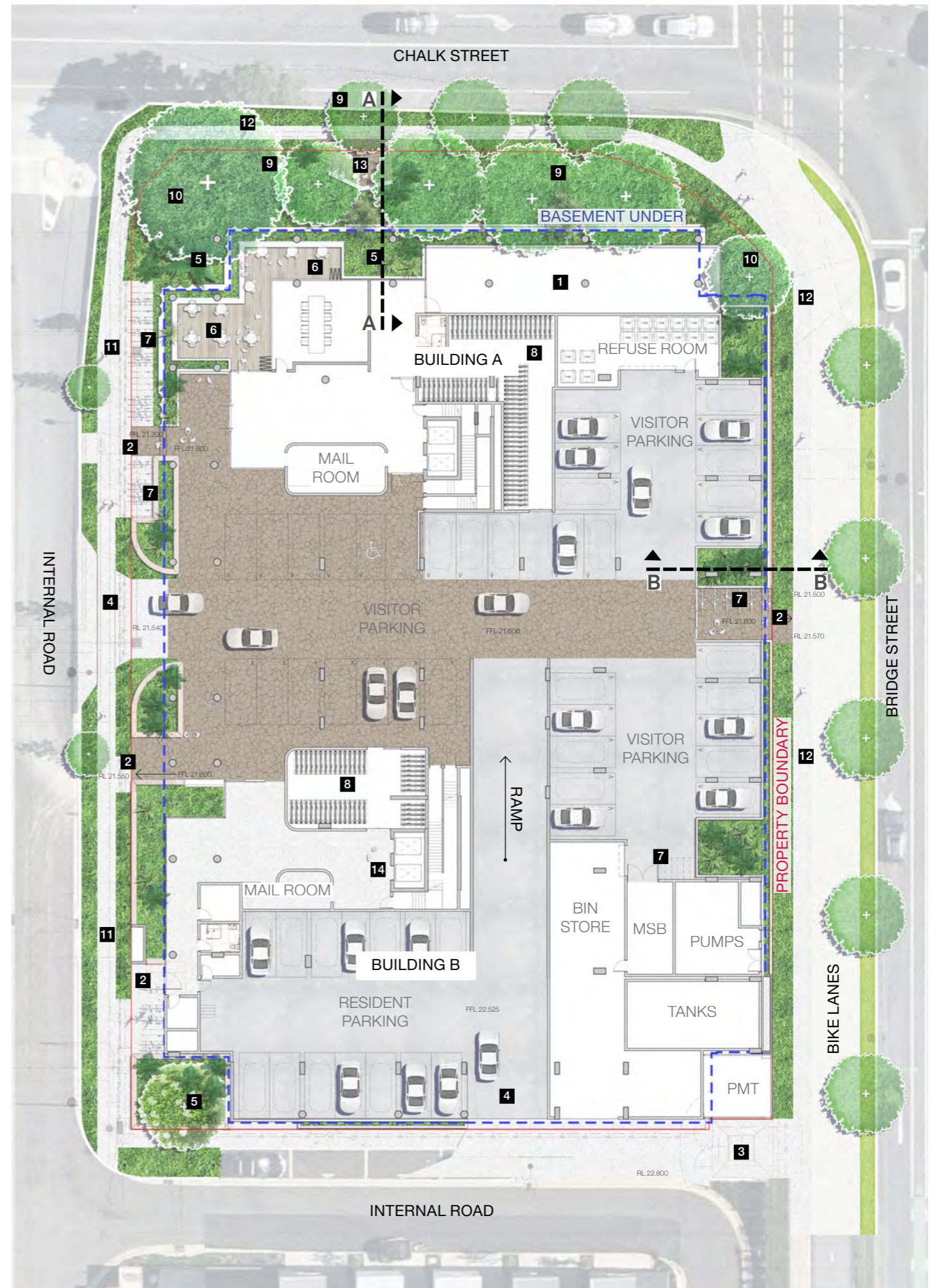
- 1** Gym
- 2** Pedestrian access
- 3** Existing PMT to be relocated
- 4** Vehicle entry
- 5** Small feature tree
- 6** Terrace/Dining
- 7** Bicycle parks
- 8** Resident bike store
- 9** Shade trees
- 10** Feature tree with bud lighting
- 11** Proposed footpath (1200mm)
- 12** Existing footpath (1500mm)
- 13** Public gathering and seating area



SECTION A
 RECREATION LAWN SECTION
 1:100 @ A3



SECTION B
 RECREATION LAWN SECTION
 1:200 @ A3



Landscape Design
3.2 Ground Level - Detail Plan

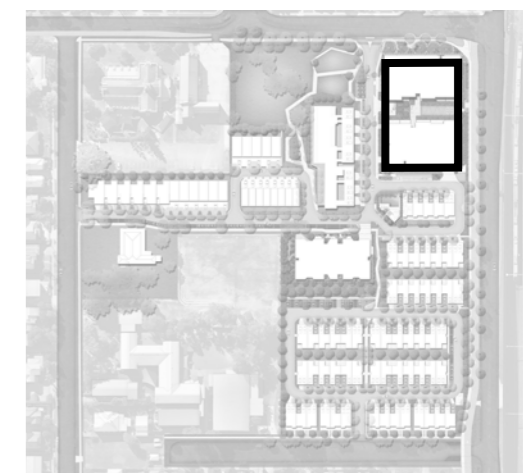
**BCC DS
 RECEIVED
 21/05/2026
 APPLICATION REF
 A006835434**

- Legend**
- 1** Garden bed with lush subtropical species
 - 2** Feature tree with bud lighting
 - 3** Shade trees
 - 4** Small feature tree
 - 5** Paved area with concrete block seating



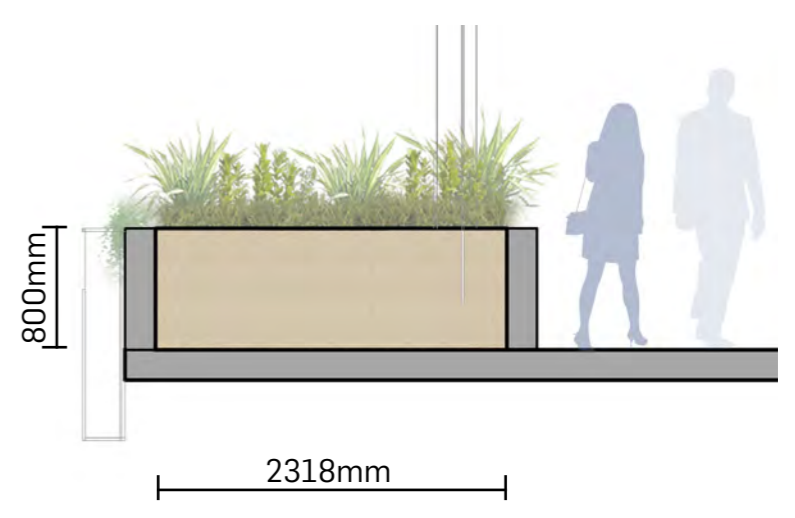
Key Plan | Ground Level



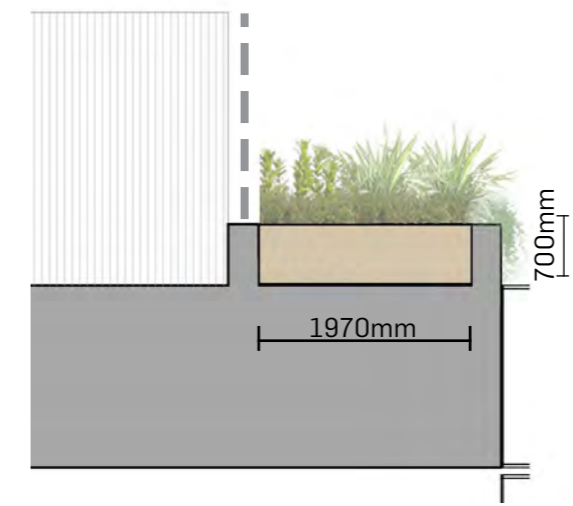
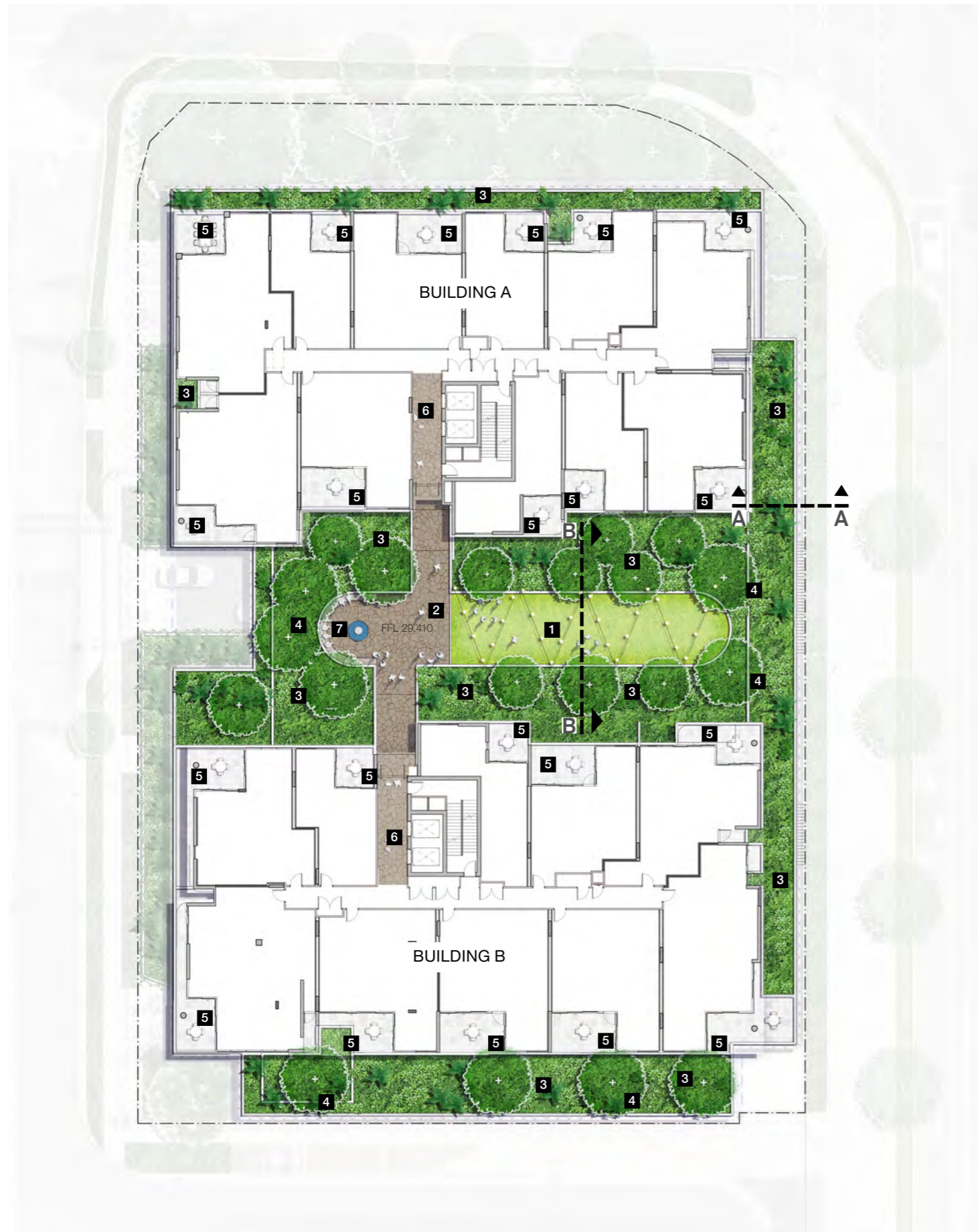


Key Plan | Ground Level

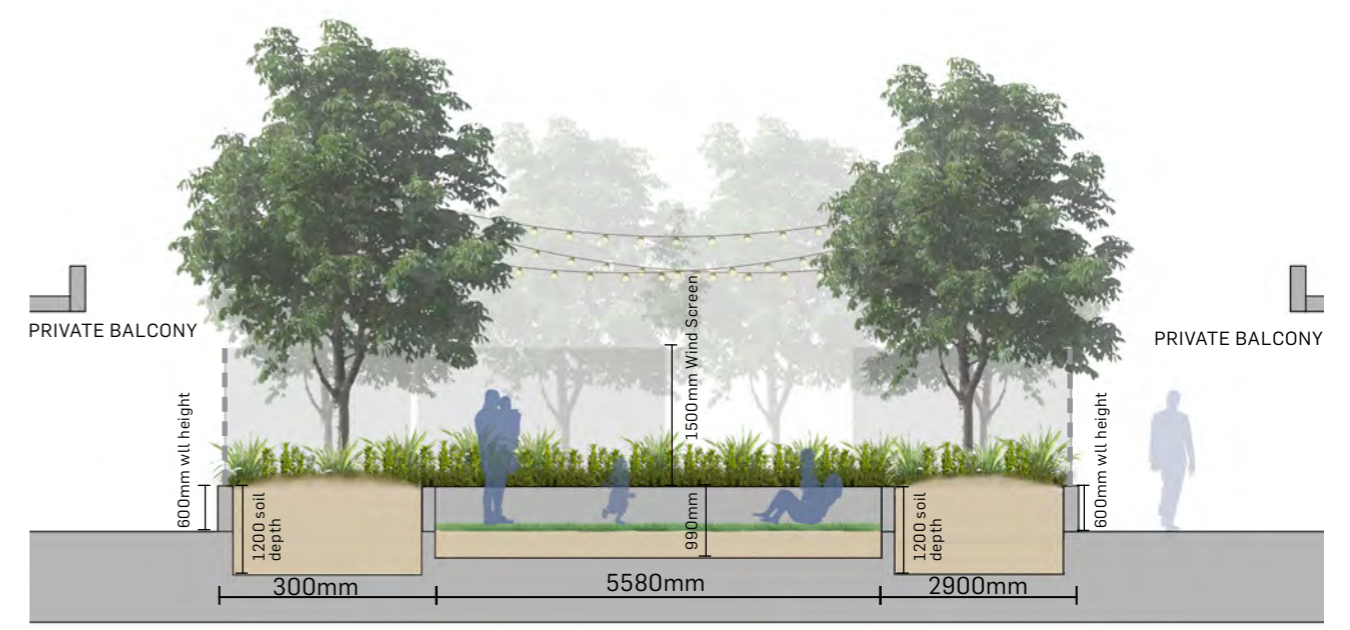
- Legend**
- 1** Podium planting with cascading groundcovers
 - 2** Architect's arbor structure



PLANTER SECTION
 1:50 @ A3

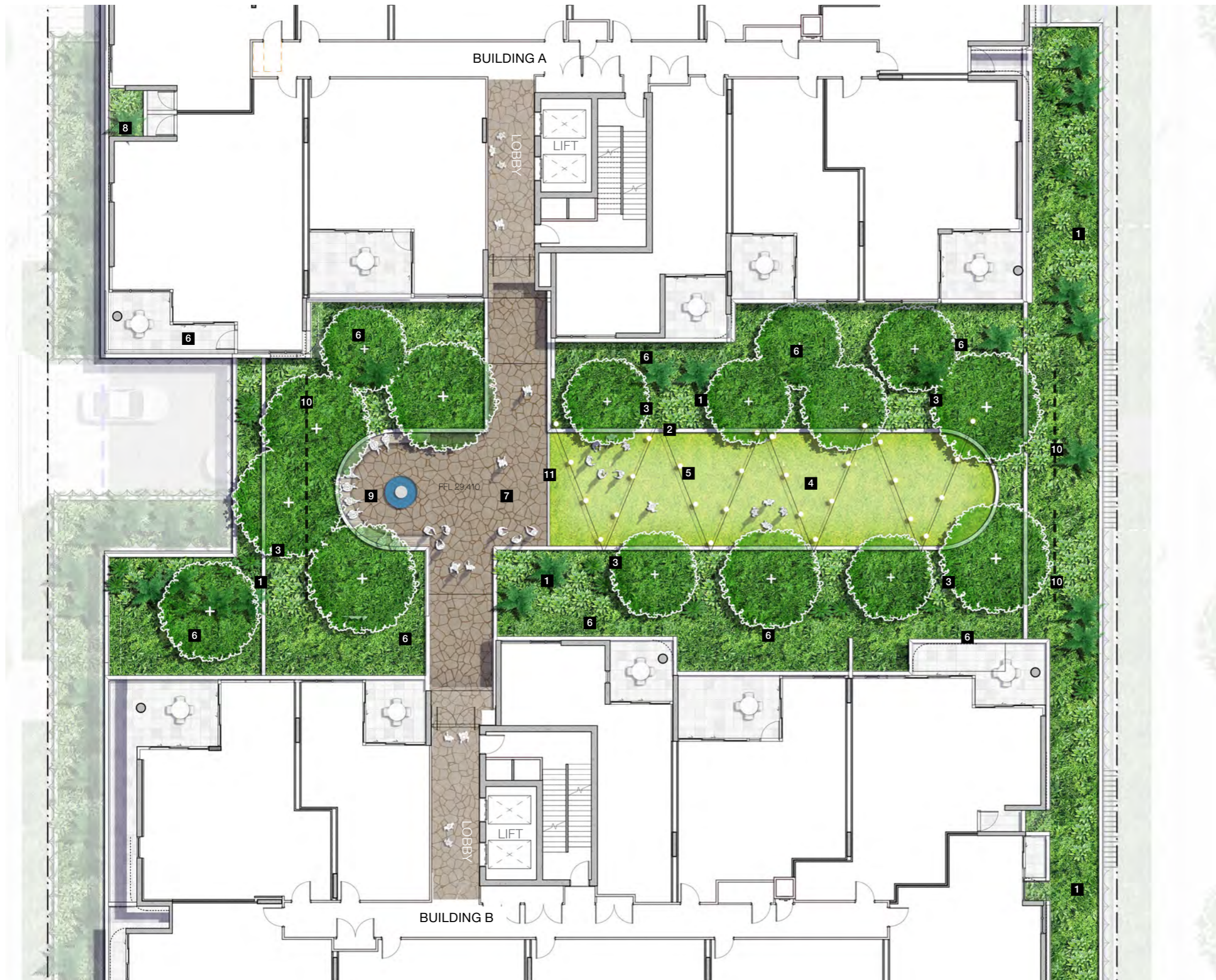


- Legend**
- 1** Synthetic turf
 - 2** Main walkway with crazy pave
 - 3** Podium planting
 - 4** Shade trees
 - 5** Private balcony
 - 6** Lobby
 - 7** Seating nook with water feature fire pit



Landscape Design
3.5 Level 02 - Detail Plan

BCC DS
RECEIVED
 21/05/2026
APPLICATION REF
 A006835434



Key Plan | Ground Level

Legend

- 1** Garden beds with lush subtropical species
- 2** Concrete seating wall
- 3** Small to medium trees
- 4** Synthetic turf lawn
- 5** Festoon lights
- 6** Private balcony with dining space
- 7** Crazy pave floor finish
- 8** Podium planting with cascading groundcovers
- 9** Round seating nook with water feature fire pit
- 10** 1500mm high solid wind screen
- 11** Concrete Edge

3.6 Building A Typical Tower - Levels 03 to 13

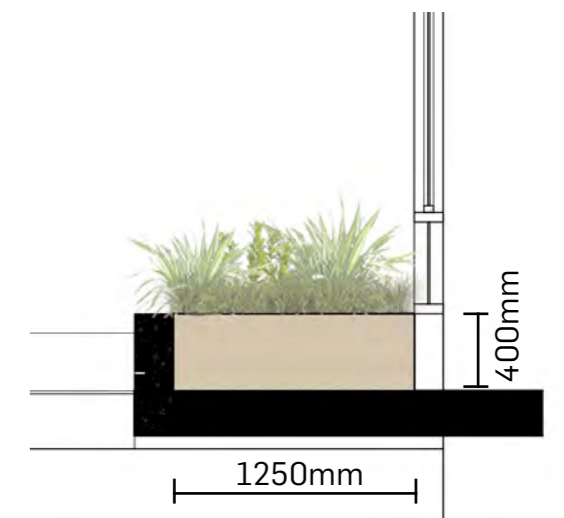
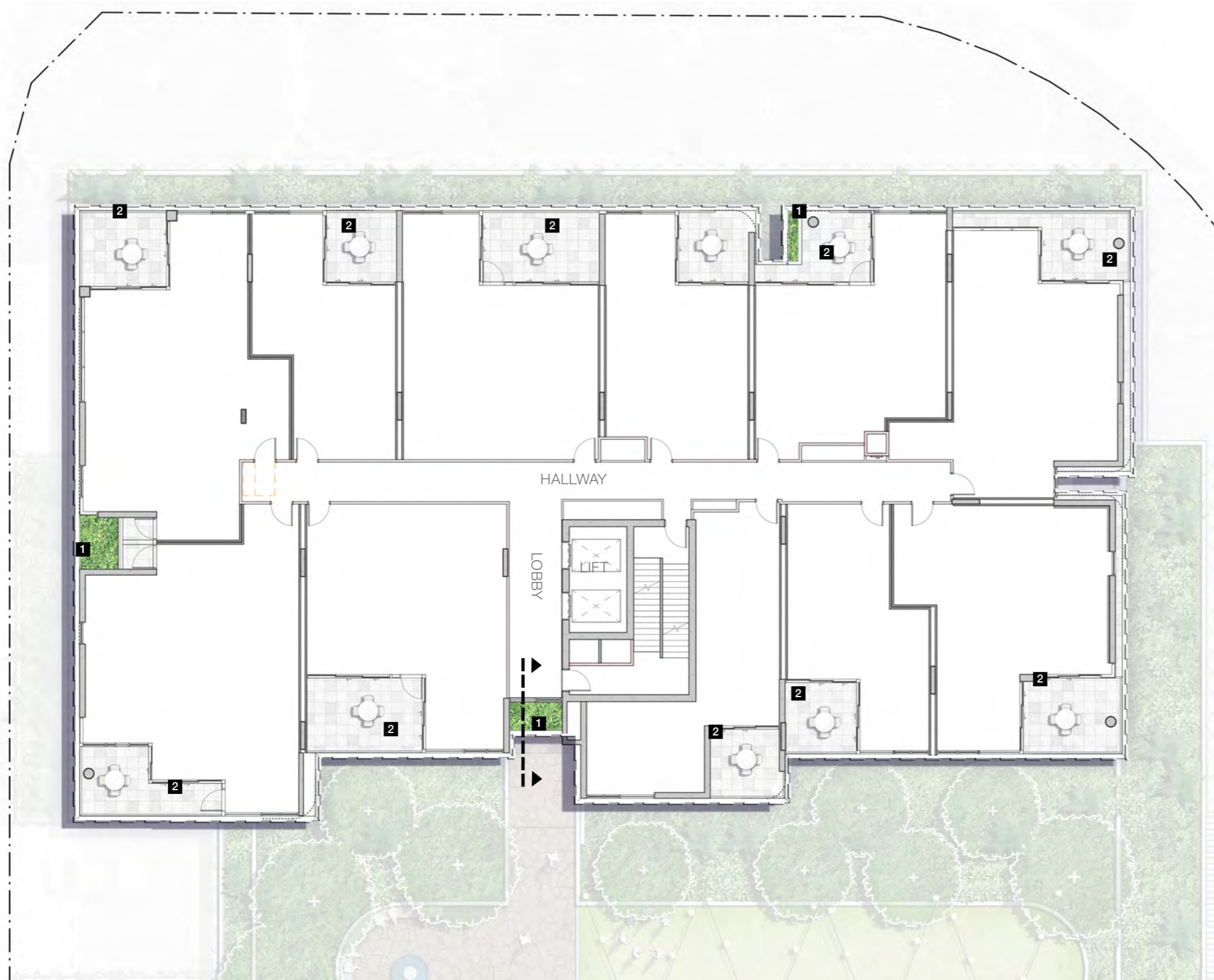
BCC DS
RECEIVED
21/05/2026
APPLICATION REF
A006835434



Key Plan | Ground Level

Legend

- 1** Podium planting with cascading groundcovers
- 2** Private balcony with dining space



BALCONY + PLANTER SECTION
1:50 @ A3

3.7 Building B Typical Tower - Levels 03 to 11

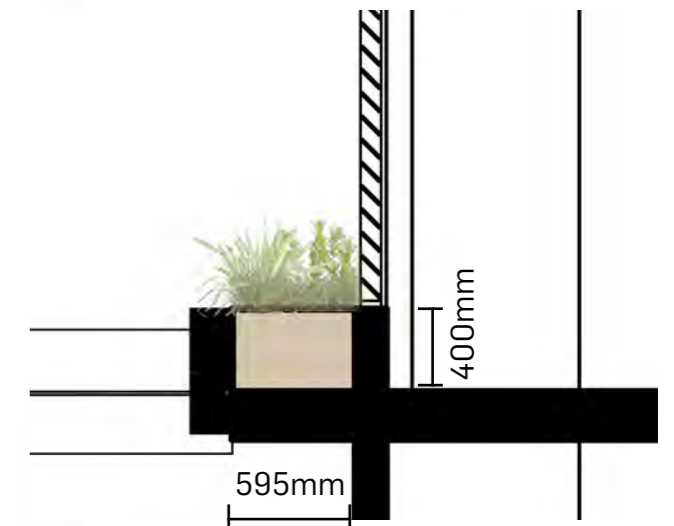
BCC DS
RECEIVED
21/05/2026
APPLICATION REF
A006835434



Key Plan | Ground Level

Legend

- 1** Podium planting with cascading groundcovers
- 2** Private balcony with dining space



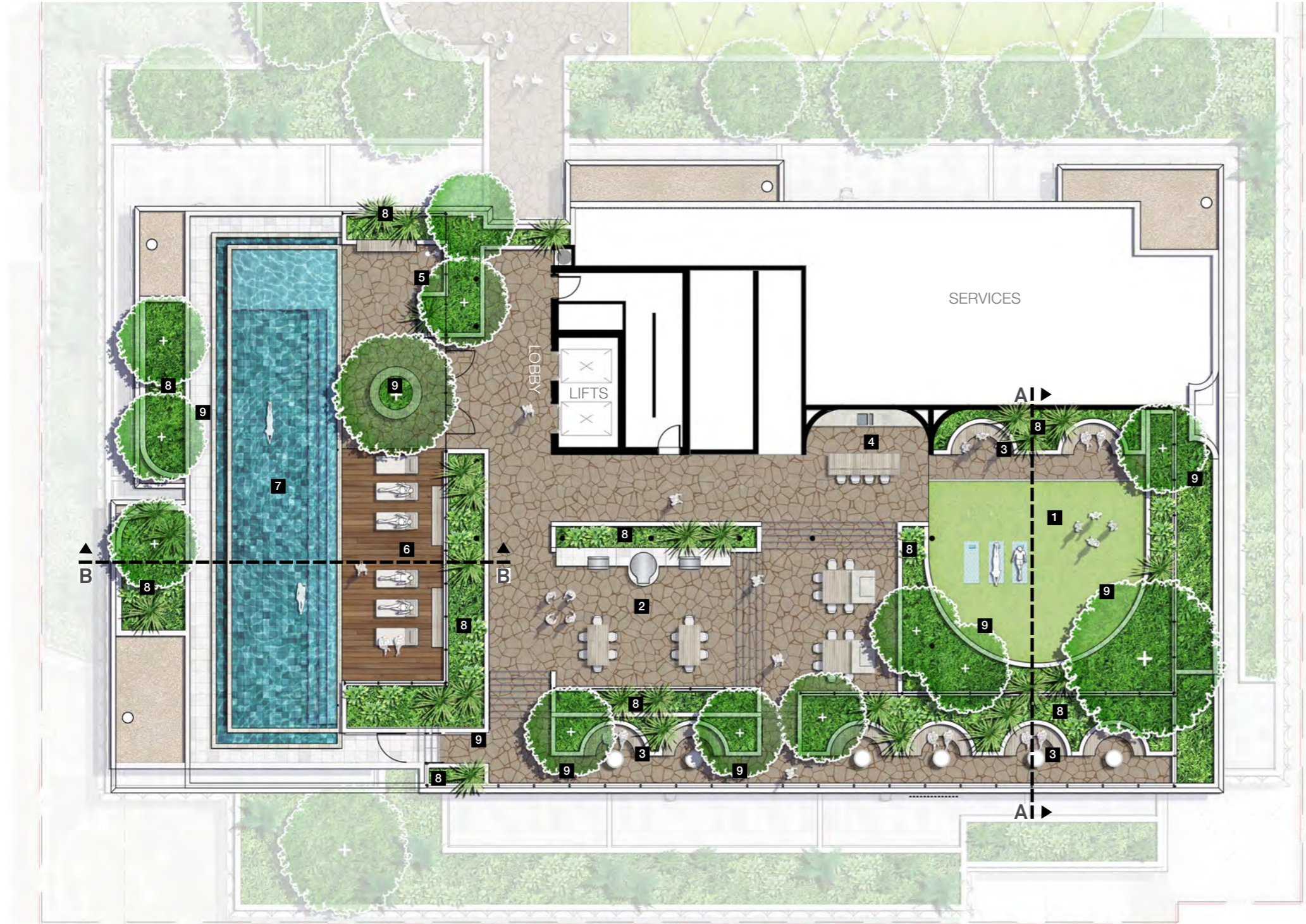
BALCONY + PLANTER SECTION
1:50 @ A3

Landscape Design
3.8 Building B Rooftop Terrace

**BCC DS
 RECEIVED**
 21/05/2026
APPLICATION REF
 A006835434

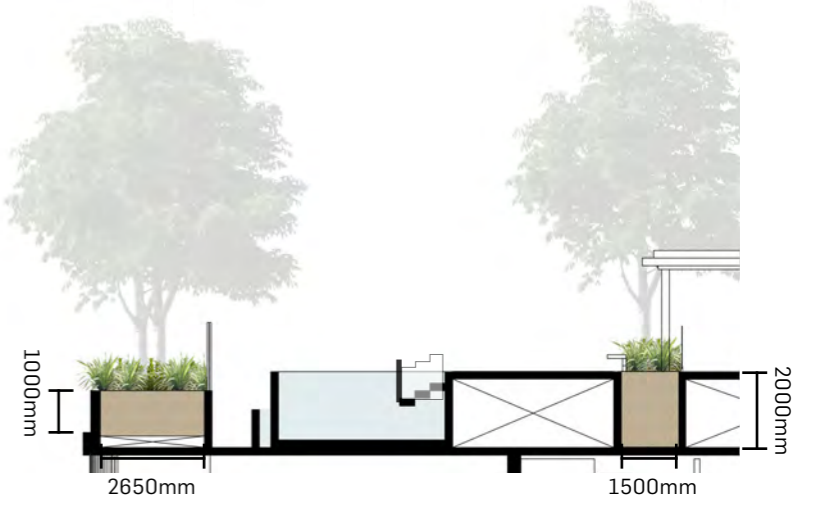
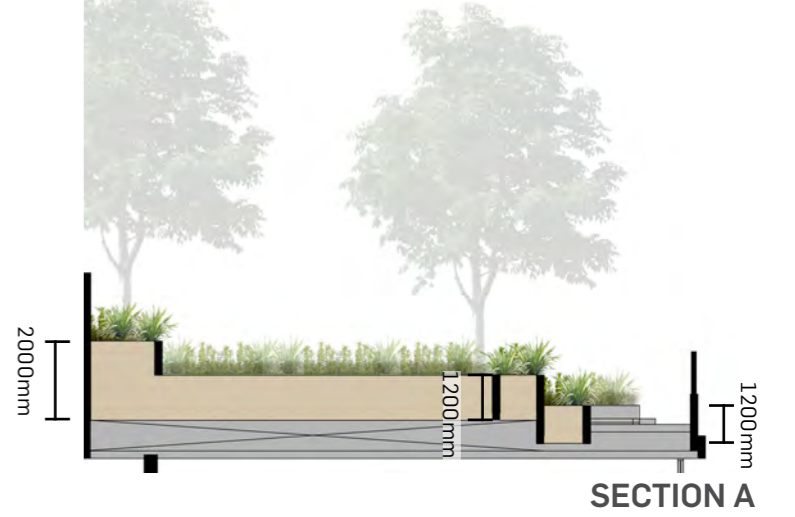


Key Plan | Ground Level



Legend

- 1** Synthetic Turf Yoga Lawn
- 2** BBQ area
- 3** Seating nooks
- 4** Outdoor kitchen
- 5** Showers
- 6** Pool deck with loungers
- 7** Swimming pool accessed via pool gates
- 8** Garden bed with lush subtropical species
- 9** Shade trees



**SECTION B
 ROOFTOP SECTIONS
 1:200 @ A3**

3.9 Planting Depths - Ground Level

BCC DS
RECEIVED
 21/05/2026
APPLICATION REF
 A006835434



Ground Level

DEEP PLANTING WITHIN SITE

Site Area = 4,178m²

Total Natural Ground = 414m²

Total Deep Planting with minimum 4m width and no services = 319m² (77%)

Balance Natural Ground = 95m² (23%)

Total Podium Planting = 1,532m²

Ground Level = 196m² (13%)

Level 01 = 139m² (9%)

Level 02 = 874m² (57%)

Levels 3 - 11 = 144m² (9%)

Rooftop Terrace = 179m² (12%)

Total Landscaped Area = 1,946m²

Stage 1 = 1,857m² (95%)

Stage 2 = 89m² (5%)

LEGEND

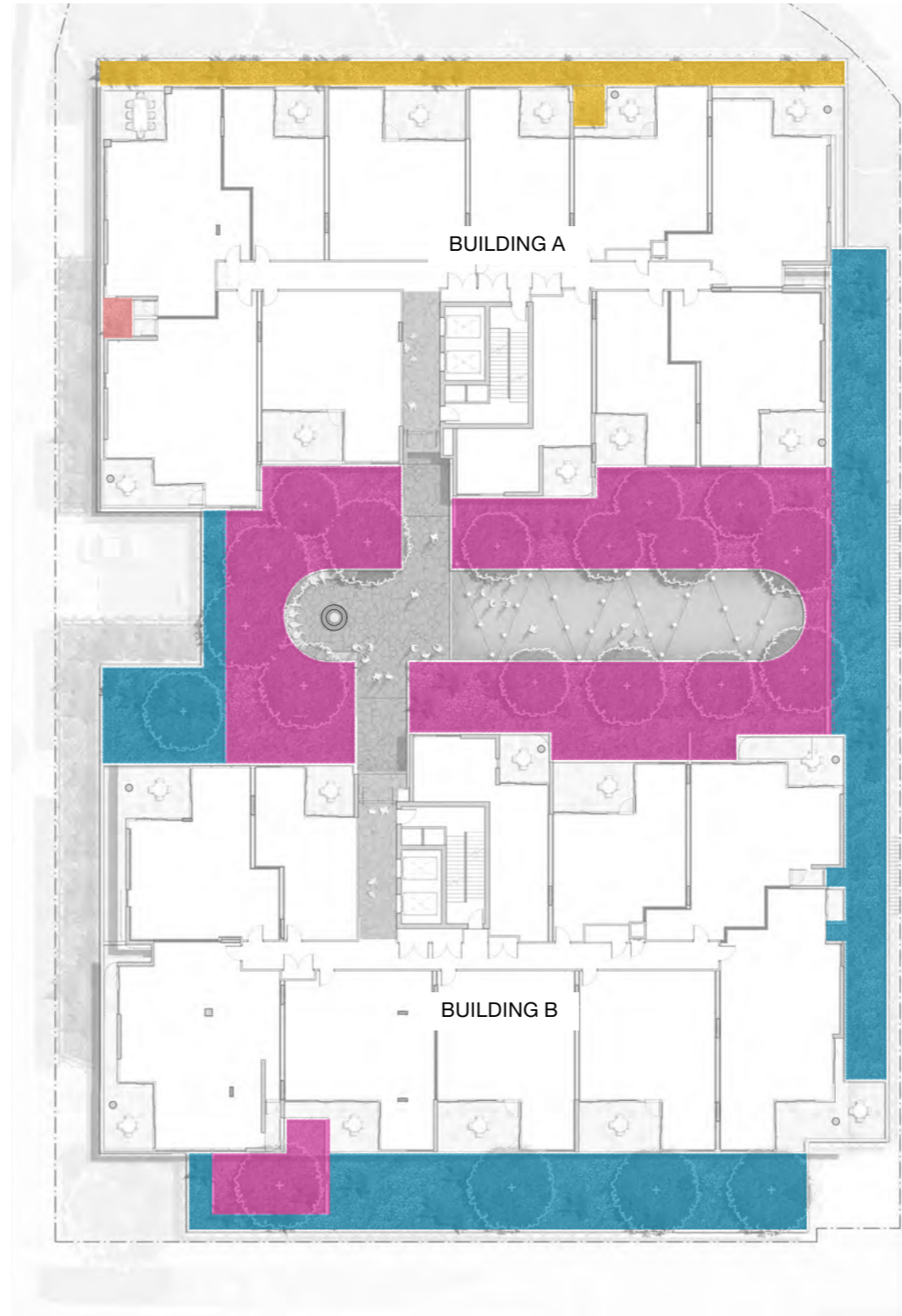
- Deep Planting
- Natural Ground
- 800mm Soil Depth
- 600mm Soil Depth
- 500mm Soil Depth
- 400mm Soil Depth
- 300mm Soil Depth
- 200mm Soil Depth

3.10 Planting Depths - Level 01 and 02

BCC DS
RECEIVED
21/05/2026
APPLICATION REF
A006835434











Level 01



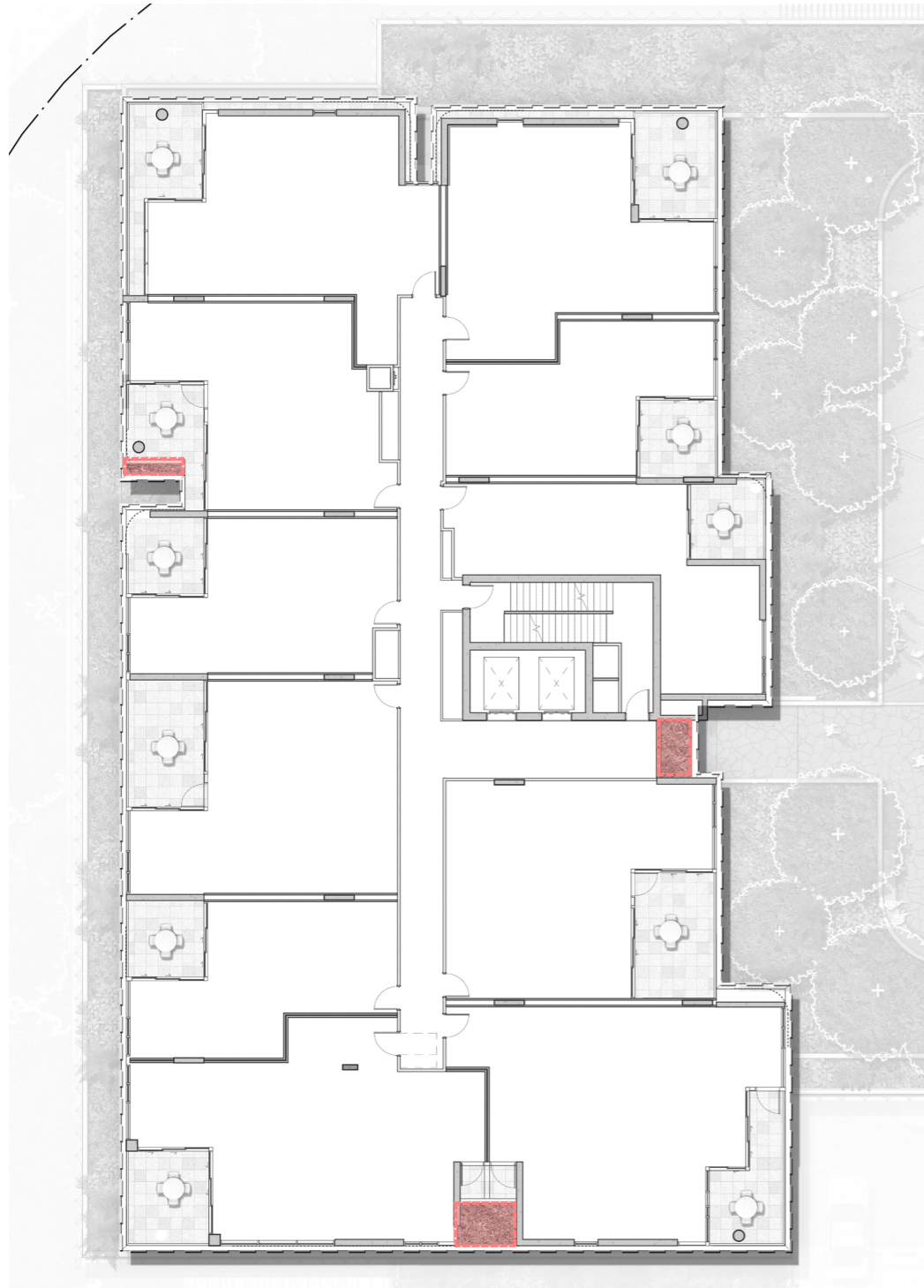
Level 02

LEGEND

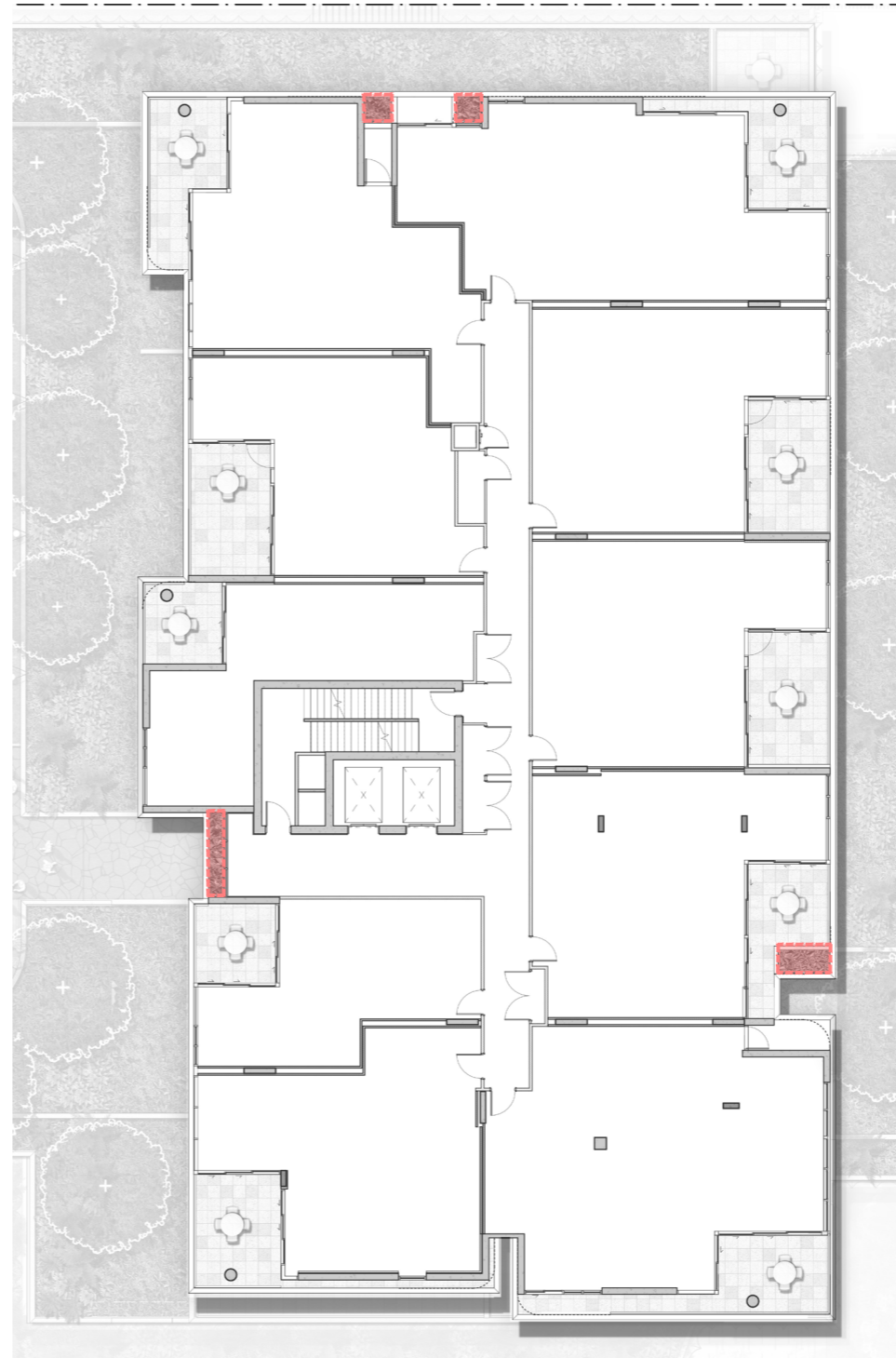
-  Deep Planting
-  Natural Ground
-  2000mm Soil Depth
-  1200mm Soil Depth
-  800mm Soil Depth
-  700mm Soil Depth
-  500mm Soil Depth
-  400mm Soil Depth

3.11 Planting Depths - Typical Tower

BCC DS
RECEIVED
21/05/2026
APPLICATION REF
A006835434











Building A Typical Tower - Levels 03 to 13



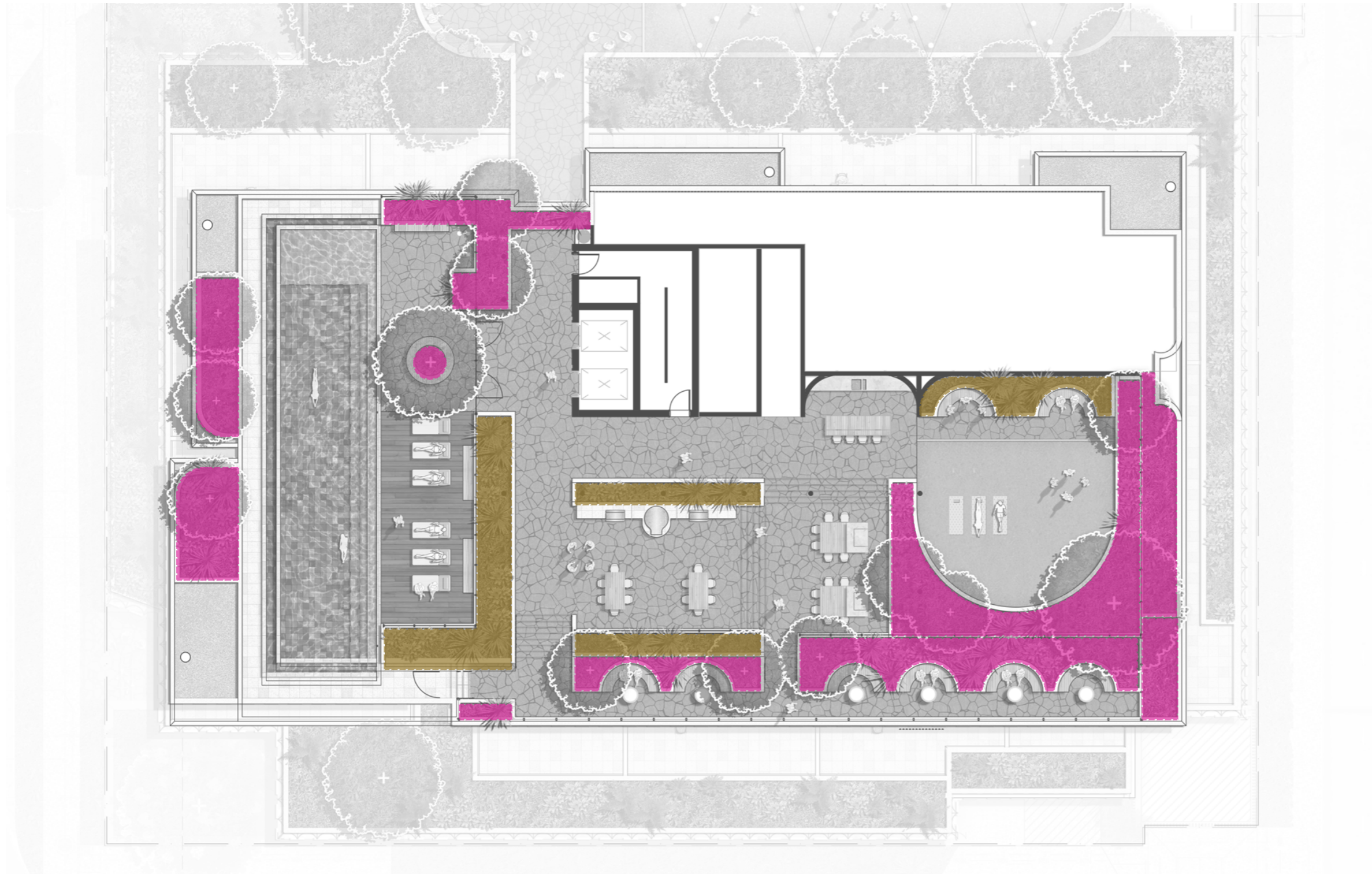
Building B Typical Tower - Levels 03 to 11

LEGEND

-  Deep Planting
-  Natural Ground
-  2000mm Soil Depth
-  1200mm Soil Depth
-  800mm Soil Depth
-  700mm Soil Depth
-  500mm Soil Depth
-  400mm Soil Depth









3.12 Planting Depths - Rooftop Terrace

BCC DS
RECEIVED
21/05/2026
APPLICATION REF
A006835434



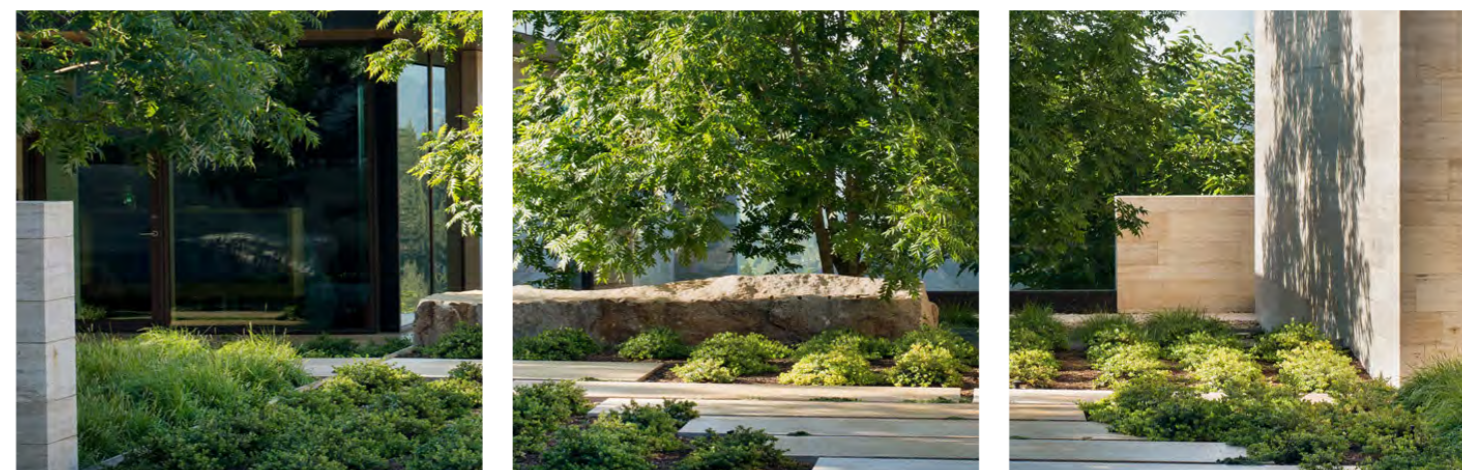
Building B - Level 12 Rooftop Terrace

LEGEND

-  Deep Planting
-  Natural Ground
-  2000mm Soil Depth
-  1200mm Soil Depth
-  800mm Soil Depth
-  700mm Soil Depth
-  500mm Soil Depth
-  400mm Soil Depth

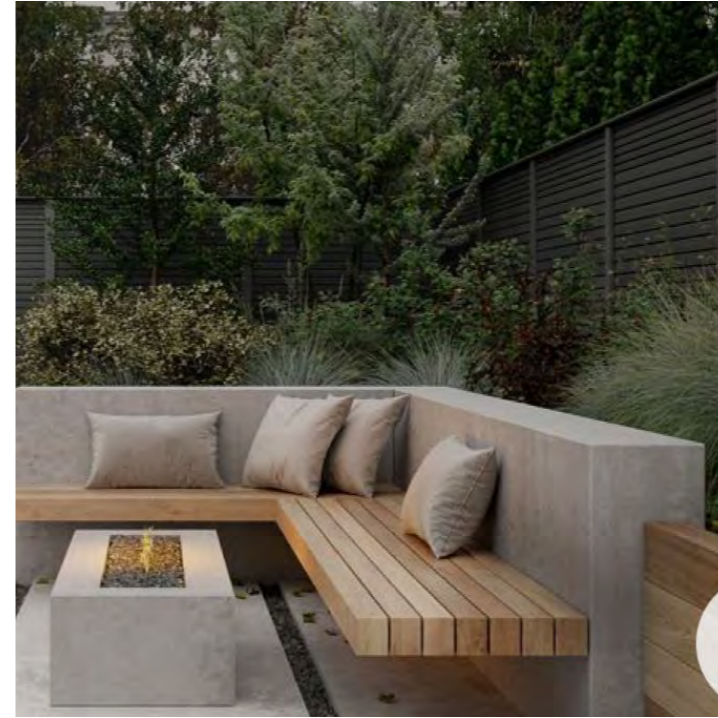
Part Four

Design Details



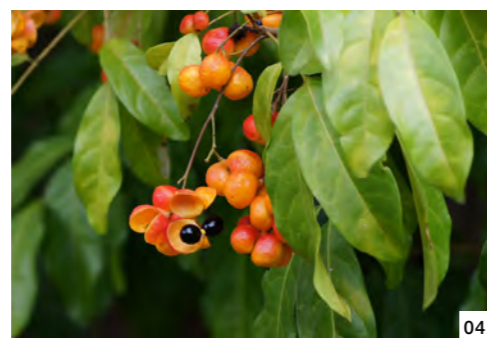
Design Details
4.1 Character Images

BCC DS
RECEIVED
21/05/2026
APPLICATION REF
A006835434



Design Details
4.2 Planting Palette

BCC DS
RECEIVED
 21/05/2026
APPLICATION REF
 A006835434



FEATURE

02	<i>Cyathea cooperi</i>	Australian Tree Fern
01	<i>Ficus benjamina*</i>	Weeping Fig Tree
03	<i>Plumeria obtusa</i>	Frangipani

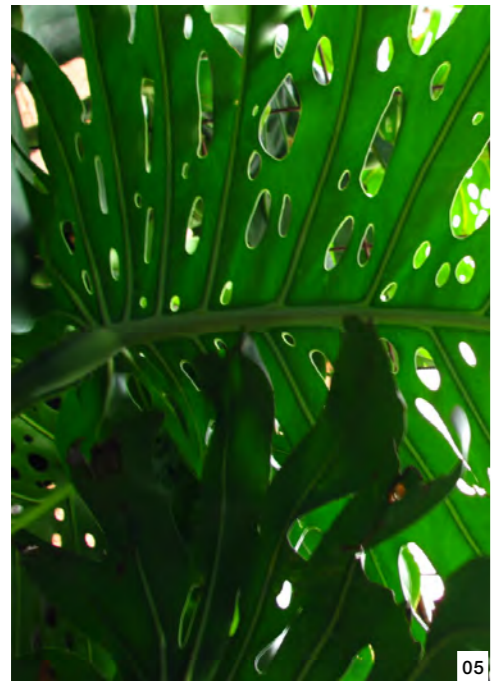
TREES

07	<i>Cupaniopsis anacardioides</i>	Tuckeroo
06	<i>Waterhousea floribunda</i>	Weeping Lilly Pilly
	<i>Randia fitzlanii</i>	Native Gardenia
05	<i>Tristaniopsis laurina 'Luscious'</i>	Luscious
04	<i>Harpulia pendula</i>	Tulipwood

* Ground level only.
 All other species to be incorporated through out the project.
 Final design to be resolved at Operational Works Level.

Design Details
4.2 Planting Palette

BCC DS
RECEIVED
 21/05/2026
APPLICATION REF
 A006835434



FEATURE SHRUBS

02	<i>Asplenium australasicum</i>	Birds Nest Fern
01	<i>Calathea lutea</i>	Cigar Plant
03	<i>Calathea zebrina</i>	Zebra Plant

SHRUBS

	<i>Philodendron xanadu</i>	Xanadu
	<i>Zamia furfuracea</i>	Cardboard Palm
	<i>Westringia fruticosa</i>	Coastal Rosemary
	<i>Phyllanthus minitiflorus</i>	Waterfall Plant
	<i>Syzygium 'Aussie Southern'</i>	Aussie Southern
	<i>Carissa macrocarpa</i>	Desert Star
05	<i>Monstera deliciosa</i>	Split-Leaf Philodendron
	<i>Alocasia brisbanensis</i>	Cunjevoi
07	<i>Cordyline petiolaris</i>	Broad Leaved Palm Lily (Green)

GROUNDCOVERS

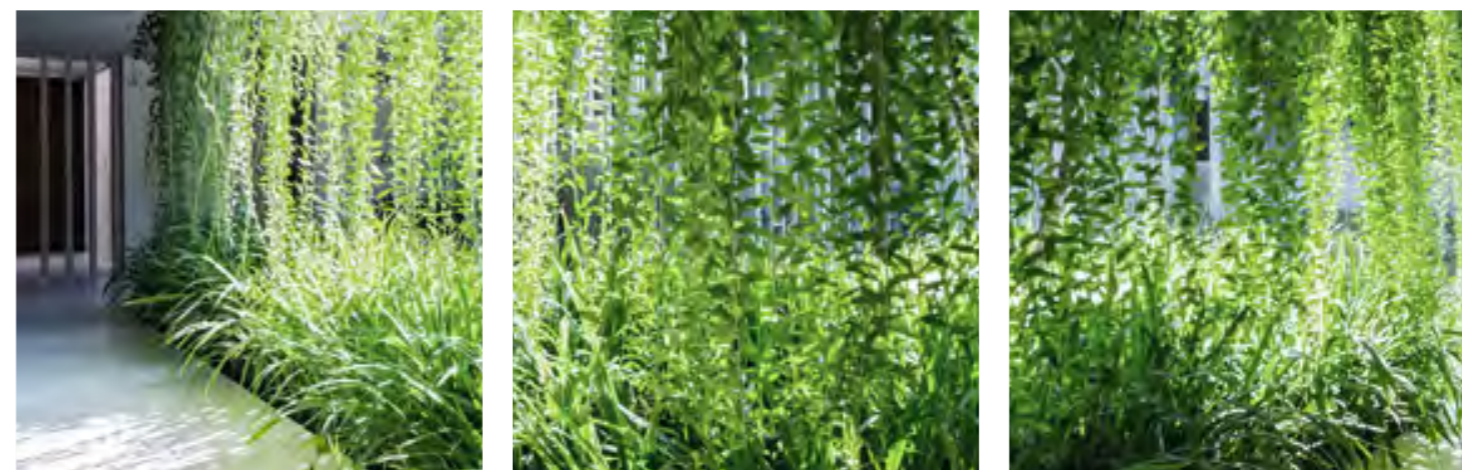
	<i>Dichondra repens</i>	Kidney Weed
	<i>Doodia aspera</i>	Prickly Rasp Fern
	<i>Liriope muscari</i>	Evergreen Giant
	<i>Casuarina glauca</i>	Cousin It
	<i>Ophiopogon japonicus</i>	Mondo Grass
	<i>Senecio mandraliscae</i>	Blue Chalksticks
09	<i>Viola banksii</i>	Native Violet
08	<i>Zoysia tenuifolia</i>	Korean Carpet Grass
06	<i>Chrysocephalum apiculatum</i>	Yellow Buttons
	<i>Brachyscome multifida</i>	Rocky Daisy
	<i>Pennisetum alopecuroides</i>	Nafray Swamp Foxtail Grass

CLIMBERS & CREEPERS

04	<i>Cissus antartica</i>	Kangaroo Vine
	<i>Epipremnum aureum</i>	Pothos
	<i>Trachelospermum jasminoides</i>	Star Jasmine

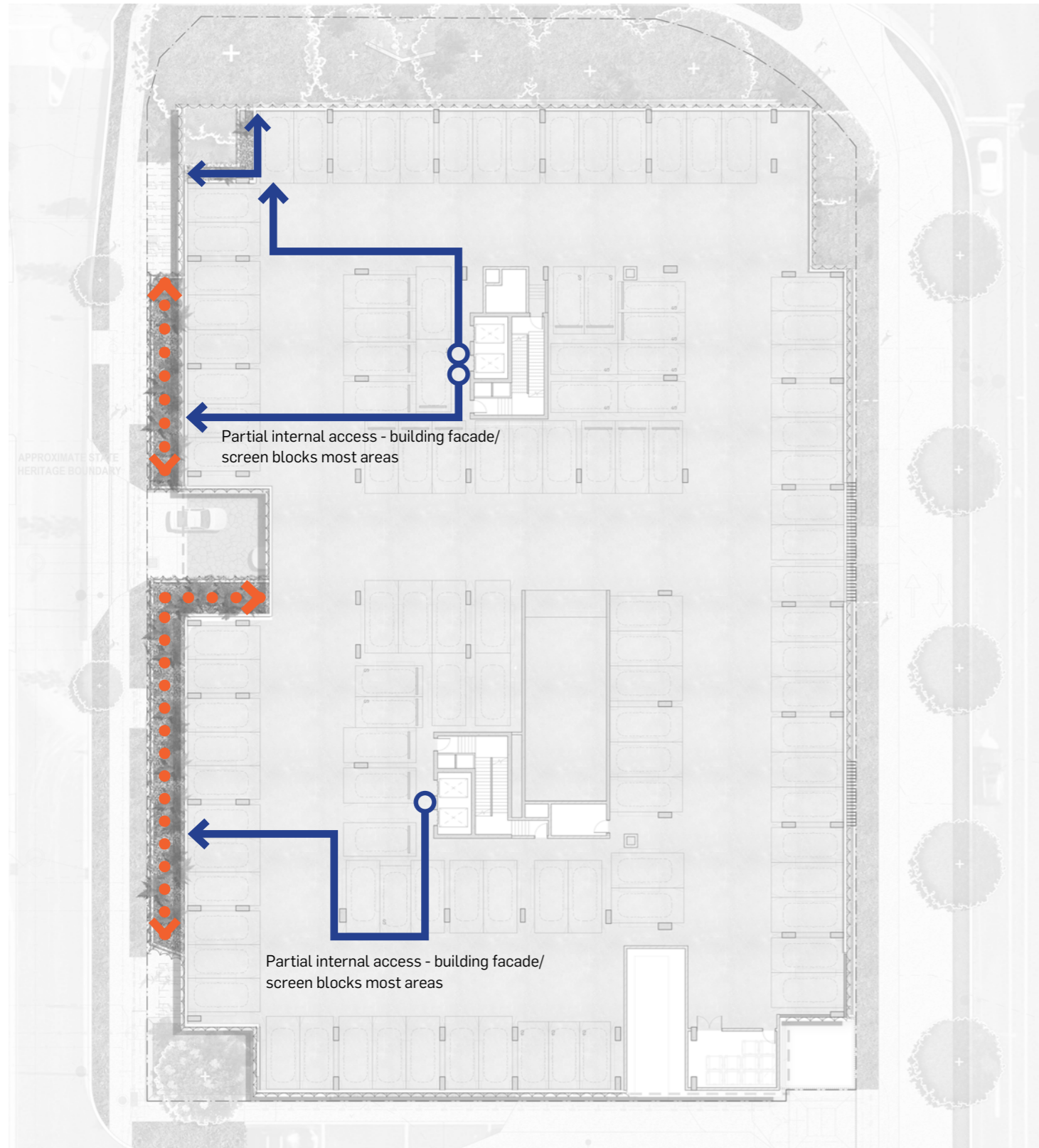
Part Five

Maintenance Information



5.1 Maintenance Access - Resident Carpark

Level 01



LANDSCAPE ACCESS

- Maintenance access for planters sleeving the podium carpark will be via a secure access door with a safety cable line along full extent of planter
- Maintenance access for edge planters on Podium terrace will be accessed internally with a safety cable line along full extent of planter

Plant species for all edge planters have been chosen to grow with little to no intervention. It is assumed a half yearly visual inspection would be needed to monitor the planting and identify plants requiring replacement. The intent for the planting is for it to grow to it's full potential with little to no pruning.

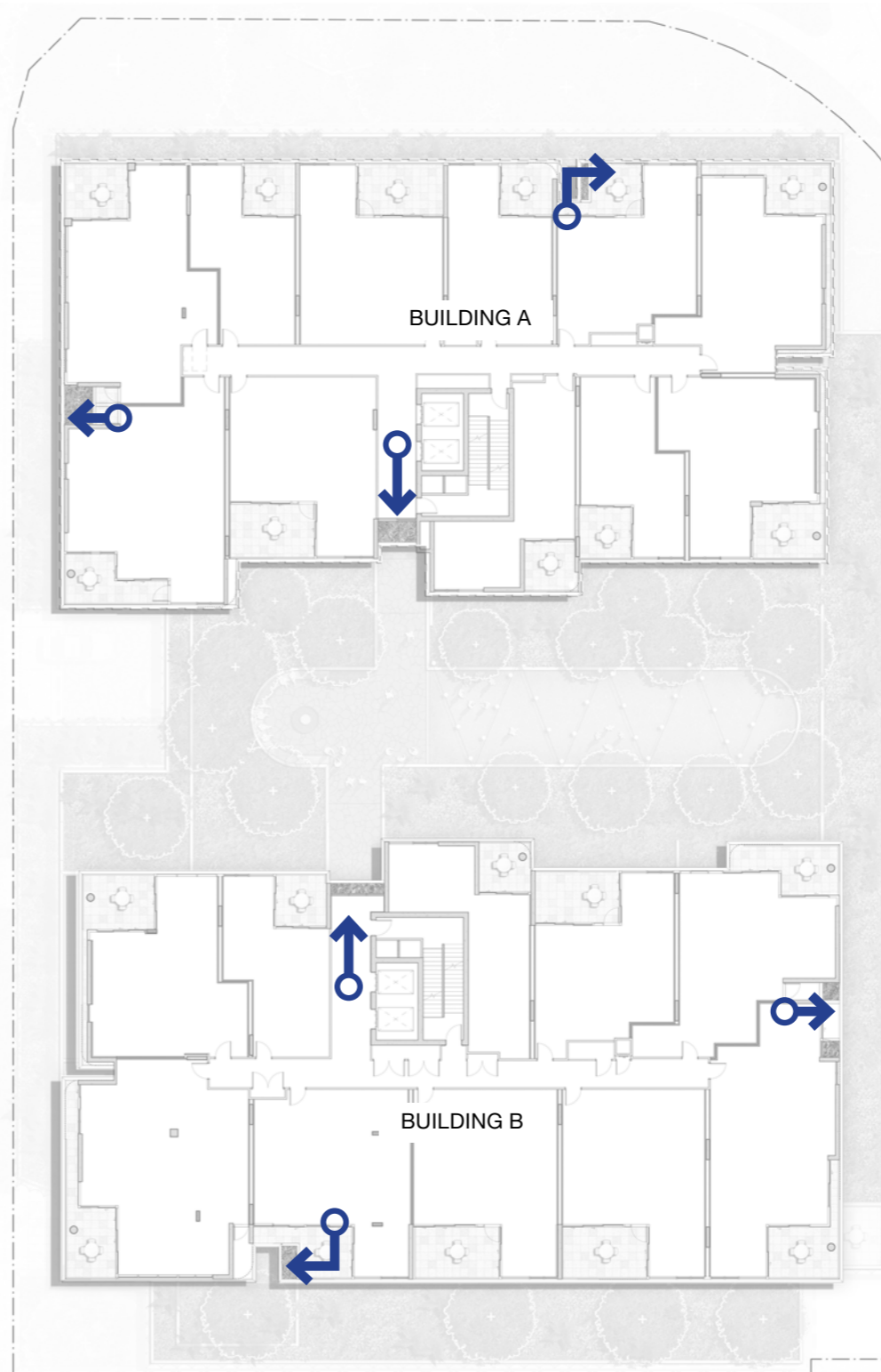
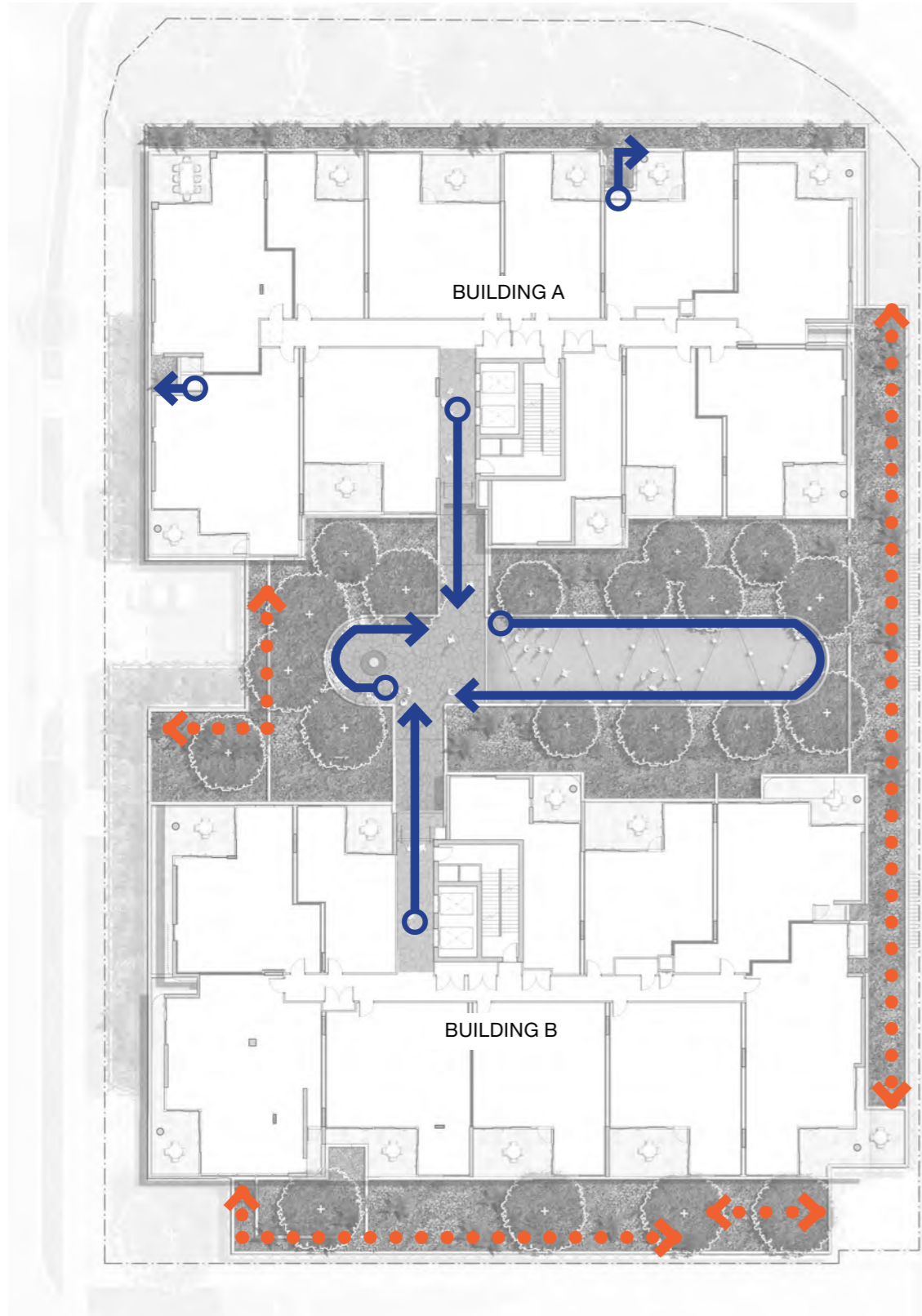
LEGEND

- Internal Access
- External Access with Safety Cables



5.2 Maintenance Access - Resident Floors

Level 02

Typical Tower - Levels 03 to 13

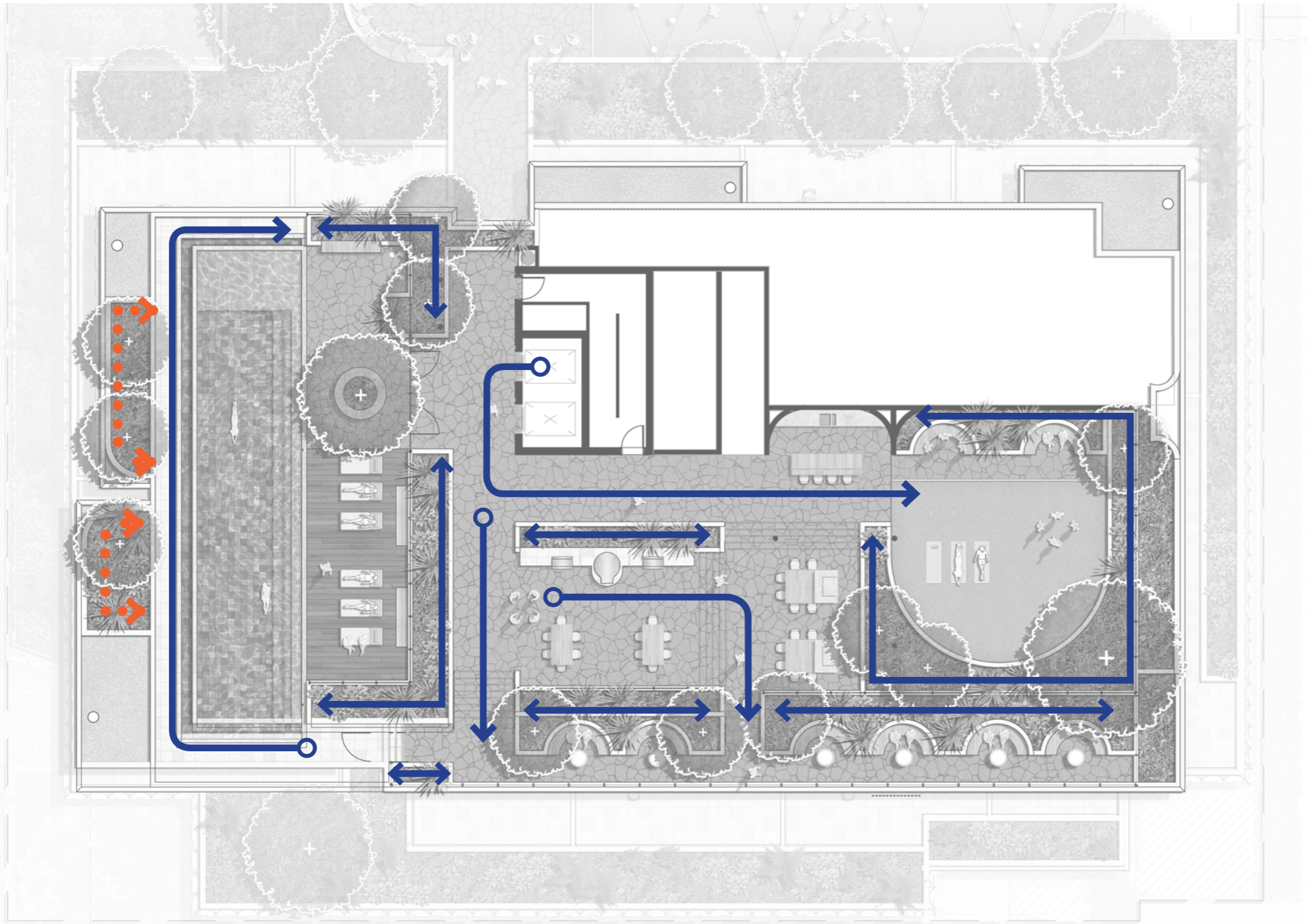


LEGEND


-  Internal Access
-  External Access with Safety Cables


5.3 Maintenance Access - Rooftop Terrace

BCC DS
RECEIVED
21/05/2026
APPLICATION REF
A006835434



LEGEND

 Internal Access

 External Access with Safety Cables

BCC DS
RECEIVED
21/05/2026
APPLICATION REF
A006835434

URBIS