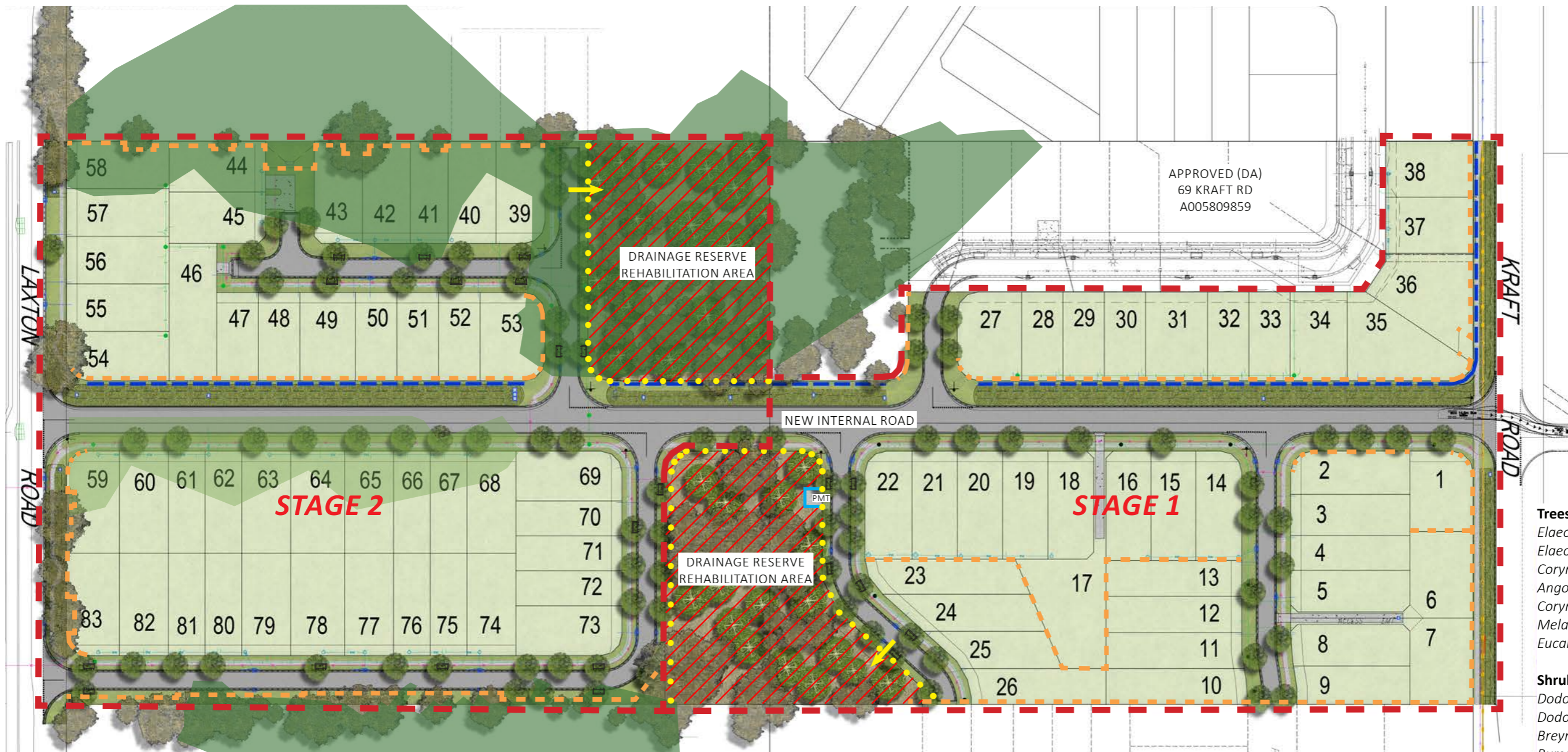


REHABILITATION CONCEPT



LEGEND

- EXISTING VEGETATION
- REVEGETATION PLANTING
- STREET TREE
- SITE BOUNDARY
- NO DIRECT ACCESS
- Drainage Reserve Rehabilitation Area
- Bollards
- Retaining Wall
- 1800mm Pool Fence for PMT
- Maintenance Access
- Landscaped Swale
- BCC HES Mapping
- BCC HESS Mapping

- Trees in Rehabilitation Area:**
- Elaeocarpus tereticornis*
 - Elaeocarpus siderophloia*
 - Corymbia intermedia*
 - Angophora leiocarpa*
 - Corymbia tessellaris*
 - Melaleuca quinquenervia*
 - Eucalyptus racemosa*

- Shrubs in Rehabilitation Area:**
- Dodonaea triquetra*
 - Dodonaea viscosa*
 - Breynia oblongifolia*
 - Bursaria spinosa*
 - Melastoma affine*
 - Leptospermum polygalifolium*

- Groundcovers in Rehabilitation Area:**
- Themeda triandra*
 - Imperata cylindrica*
 - Microlaena stipoides*
 - Cymbopogon refractus*
 - Oplismenus aemulus*
 - Dichelachne crinita*

- Groundcovers in Plant-out Swale:**
- Carex appressa*
 - Ficinia nodosa*
 - Imperata cylindrica*
 - Juncus usitatus*

REHABILITATION INTENT

The aims of this Rehabilitation concept are to provide a) a link between adjoining vegetation areas enhancing the strategic green space network through Pallara, and b) integrate with streetscape landscaping, particularly the storm water bioswale.

The revegetation works in the Ecological patch are to undertake weed management and plant with species identified in site Ecological Reporting, notably: RE 12.3.11 *Eucalyptus tereticornis* +/- *Eucalyptus siderophloia* and *Corymbia intermedia* open forest to woodland. *Corymbia tessellaris*, *Lophostemon suaveolens* and *Melaleuca quinquenervia* frequently occur forming a low tree layer. Rehabilitation to be based on site ecological assessment report.

Drainage Reserve Rehabilitation area to focus on tree retention protection, and revegetation to infill upper canopy and the planting of shrubs and ground covers to be planted to meet required densities. Refer to Tree Retention Plan (TRP) and JFP Civil drawings for further information.

BCC DS
RECEIVED
 12/05/2026
APPLICATION REF
 A006935362



SCALE: 1:1250 @ A3