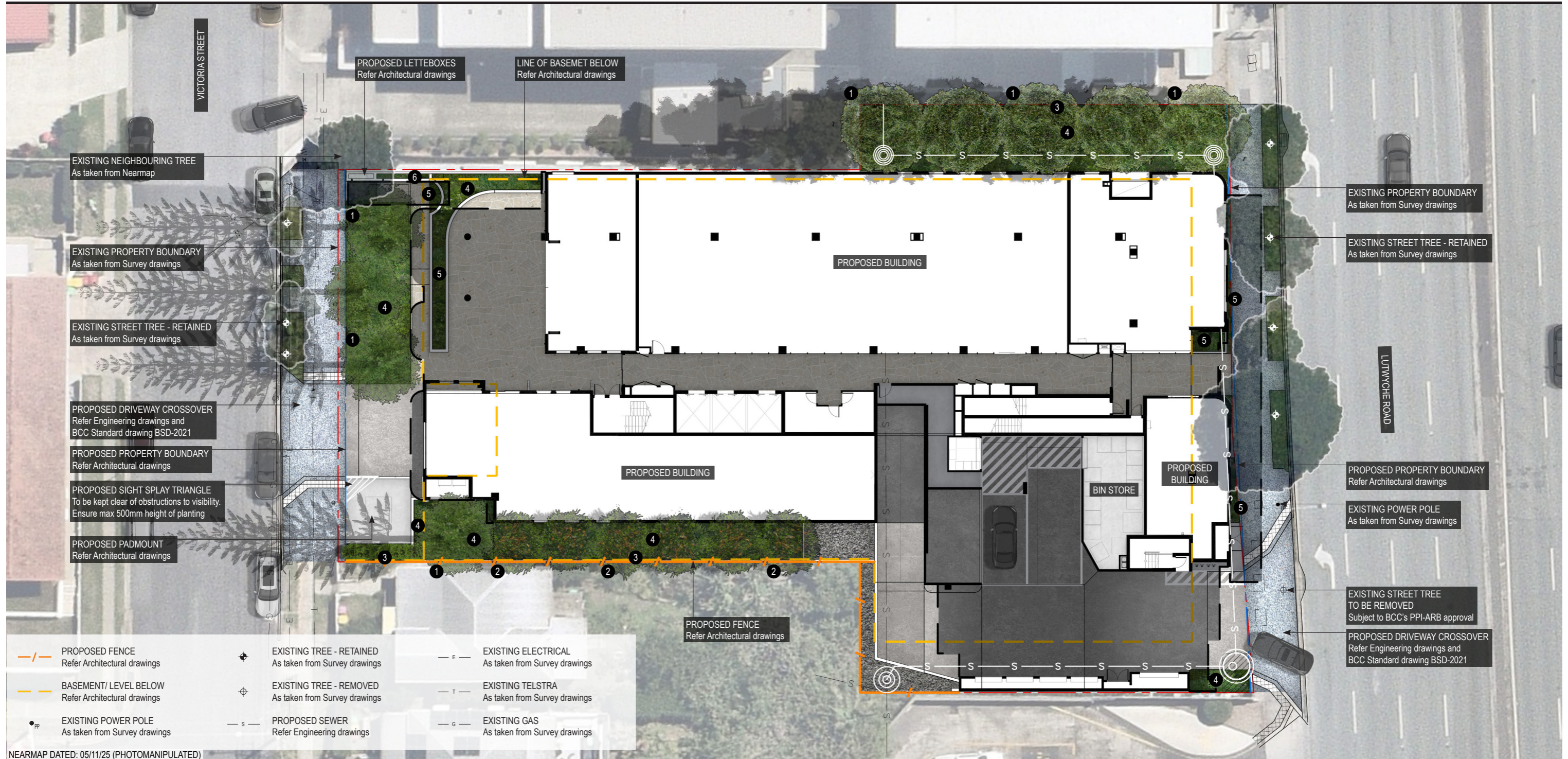


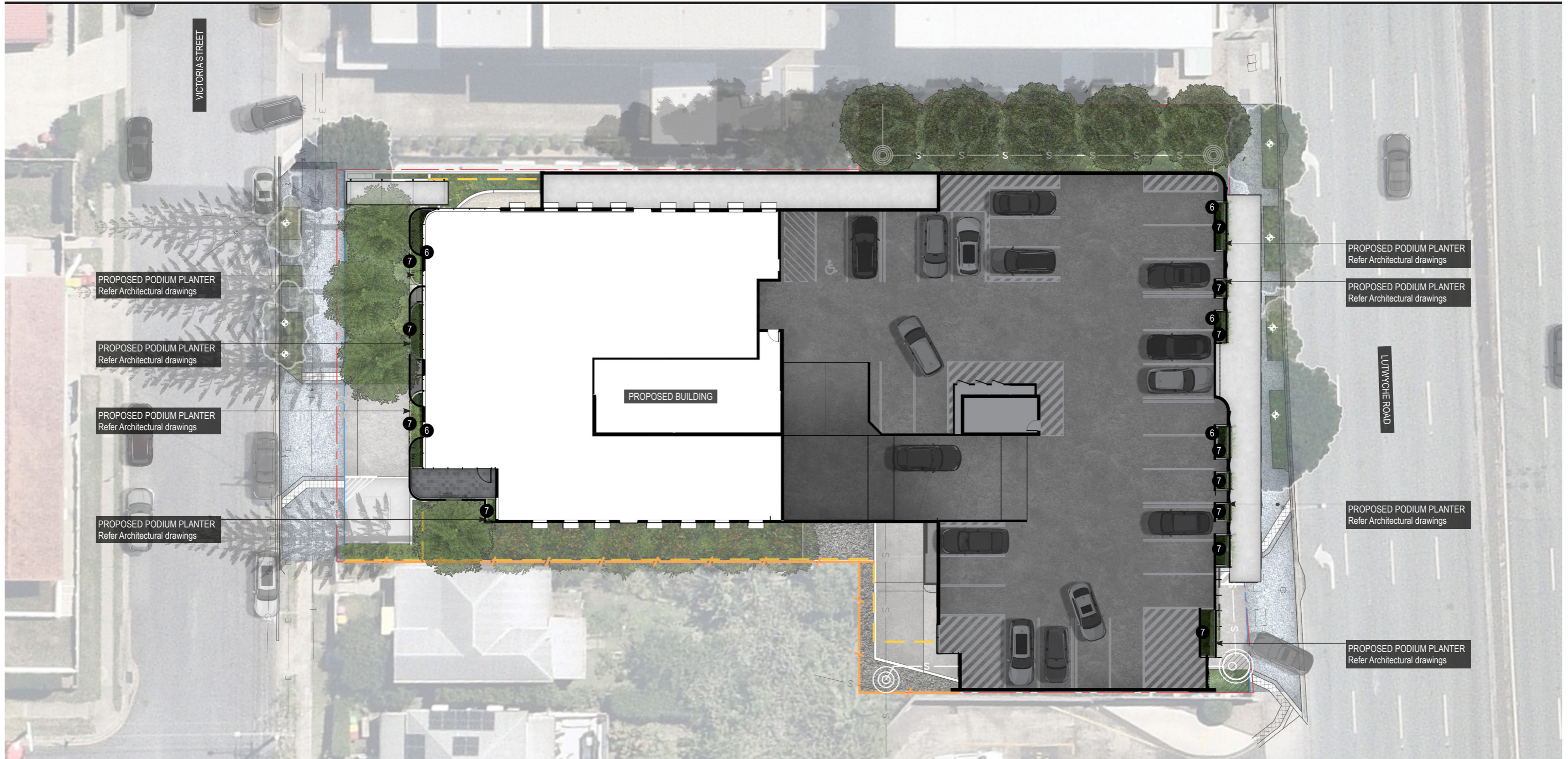
LANDSCAPE CONCEPT PLAN - GROUND LEVEL



NEARMAP DATED: 05/11/25 (PHOTOMANIPULATED)

- | | | | |
|--|--|---|---|
| <p>1 LARGE SUBTROPICAL TREES
Provide large tall canopy tree species within designated deep planting zones, capable of achieving a minimum height of 15m at maturity, to deliver shade to the frontage, enhance visual amenity and soften the presentation of the proposed building, with proposed trees integrated into the site planning of the proposed development.
Refer Proposed Planting Schedule (ie: <i>Agathis robusta</i>, <i>Araucaria columnaris</i>)</p> <p>2 COLUMNAR TREES
Provide columnar tree planting to deliver vertical softening and screening of the proposed building to the streetscape and adjoining properties, contributing to a lush subtropical presentation. Where located within the proposed development, trees are to be integrated to create a dramatic, cohesive subtropical green presentation to streetscape frontages and/or neighbouring sites.
Refer Proposed Planting Schedule (ie: <i>Elaeocarpus eumundii</i>)</p> | <p>3 SCREEN PLANTING
Provide dense screen planting using layered large shrubs if space, permits, and small trees where appropriate, to provide privacy and reduce overlooking to adjoining properties. Species are to be predominantly hardy native or subtropical selections, capable of achieving effective year-round screening, with low maintenance requirements once established and suitability to local microclimatic conditions. Refer Proposed Planting Schedule</p> <p>4 SHRUBS AND GROUNDCOVERS
Understorey planting and groundcovers are proposed to provide a cohesive and layered landscape treatment that reinforces the subtropical character and enhances visual amenity at the pedestrian scale. Planting includes a mix of hardy, low-maintenance native and subtropical species to provide colour, texture, and seasonal interest, while maintaining clear sightlines to building entries and signage. Species are selected to ensure durability in coastal conditions and compatibility with adjoining verge and streetscape.
Refer Proposed Planting Schedule</p> | <p>5 SHADE TOLERANT PLANTING
Provide shade-tolerant, low-maintenance species to ensure robust planting performance in low-light areas, maintain ground cover, and contribute to ongoing visual amenity and reduce maintenance. Refer Proposed Planting Schedule</p> <p>6 CLIMBERS
Climbers and vertical greening are proposed to provide additional landscape softening to breakout spaces, contributing to the subtropical landscape character and enhancing visual amenity to these recreational areas. Proposed climbers will be supported on an integrated trellis/wire frame structure designed to encourage coverage. Selected species are hardy, low-maintenance and suited to the proposed conditions, providing vertical greenery, seasonal interest and additional softening of the proposed building.
Refer Proposed Planting Schedule (ie: <i>Stephanotis floribunda</i>)</p> | <p>7 CASCADING PLANTS
Provide cascading plant species to podium planters to soften parapets and slab edges, create a lush, layered subtropical presentation and enhance visual amenity when viewed from the street and upper levels. Species are to be hardy, low-maintenance selections suited to podium conditions (exposure, wind and limited soil depths), providing dense trailing cover for year-round greenery and additional landscape softening of built elements.
Refer Proposed Planting Schedule (ie: <i>Cissus antarctica</i>, <i>Ipomea pes-caprae</i>)</p> |
|--|--|---|---|





- 1 LARGE SUBTROPICAL TREES**
Provide large tall canopy tree species within designated deep planting zones, capable of achieving a minimum height of 15m at maturity, to deliver shade to the frontage, enhance visual amenity and soften the presentation of the proposed building, with proposed trees integrated into the site planning of the proposed development.
Refer Proposed Planting Schedule (ie: *Agathis robusta*, *Araucaria columnaris*)
- 2 COLUMNAR TREES**
Provide columnar tree planting to deliver vertical softening and screening of the proposed building to the streetscape and adjoining properties, contributing to a lush subtropical presentation. Where located within the proposed development, trees are to be integrated to create a dramatic, cohesive subtropical green presentation to streetscape frontages and/or neighbouring sites.
Refer Proposed Planting Schedule (ie: *Elaeocarpus eumundii*)
- 3 SCREEN PLANTING**
Provide dense screen planting using layered large shrubs if space, permits, and small trees where appropriate, to provide privacy and reduce overlooking to adjoining properties. Species are to be predominantly hardy native or subtropical selections, capable of achieving effective year-round screening, with low maintenance requirements once established and suitability to local microclimatic conditions. Refer Proposed Planting Schedule
- 4 SHRUBS AND GROUNDCOVERS**
Understorey planting and groundcovers are proposed to provide a cohesive and layered landscape treatment that reinforces the subtropical character and enhances visual amenity at the pedestrian scale. Planting includes a mix of hardy, low-maintenance native and subtropical species to provide colour, texture, and seasonal interest, while maintaining clear sightlines to building entries and signage. Species are selected to ensure durability in coastal conditions and compatibility with adjoining verge and streetscape.
Refer Proposed Planting Schedule
- 5 SHADE TOLERANT PLANTING**
Provide shade-tolerant, low-maintenance species to ensure robust planting performance in low-light areas, maintain ground cover, and contribute to ongoing visual amenity and reduce maintenance. Refer Proposed Planting Schedule
- 6 CLIMBERS**
Climbers and vertical greening are proposed to provide additional landscape softening to breakout spaces, contributing to the subtropical landscape character and enhancing visual amenity to these recreational areas. Proposed climbers will be supported on an integrated trellis/wire frame structure designed to encourage coverage. Selected species are hardy, low-maintenance and suited to the proposed conditions, providing vertical greenery, seasonal interest and additional softening of the proposed building.
Refer Proposed Planting Schedule (ie: *Stephanotis floribunda*)
- 7 CASCADING PLANTS**
Provide cascading plant species to podium planters to soften parapets and slab edges, create a lush, layered subtropical presentation and enhance visual amenity when viewed from the street and upper levels. Species are to be hardy, low-maintenance selections suited to podium conditions (exposure, wind and limited soil depths), providing dense trailing cover for year-round greenery and additional landscape softening of built elements.
Refer Proposed Planting Schedule (ie: *Cissus antarctica*, *Ipomea pes-caprae*)





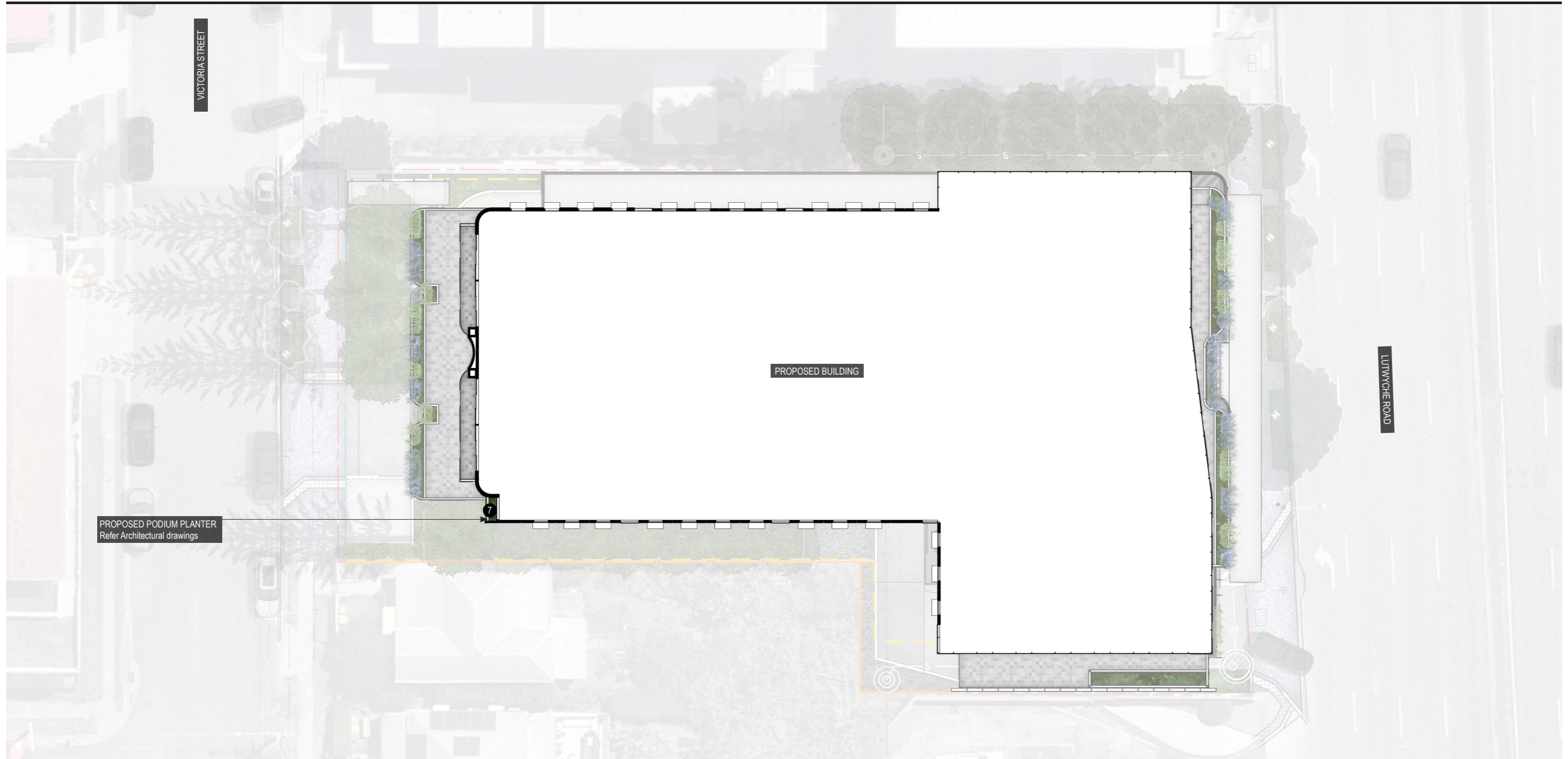
- 1 LARGE SUBTROPICAL TREES**
 Provide large tall canopy tree species within designated deep planting zones, capable of achieving a minimum height of 15m at maturity, to deliver shade to the frontage, enhance visual amenity and soften the presentation of the proposed building, with proposed trees integrated into the site planning of the proposed development.
 Refer Proposed Planting Schedule (ie: *Agathis robusta*, *Araucaria columnaris*)
- 2 COLUMNAR TREES**
 Provide columnar tree planting to deliver vertical softening and screening of the proposed building to the streetscape and adjoining properties, contributing to a lush subtropical presentation. Where located within the proposed development, trees are to be integrated to create a dramatic, cohesive subtropical green presentation to streetscape frontages and/or neighbouring sites.
 Refer Proposed Planting Schedule (ie: *Elaeocarpus eumundii*)
- 3 SCREEN PLANTING**
 Provide dense screen planting using layered large shrubs if space, permits, and small trees where appropriate, to provide privacy and reduce overlooking to adjoining properties. Species are to be predominantly hardy native or subtropical selections, capable of achieving effective year-round screening, with low maintenance requirements once established and suitability to local microclimatic conditions. Refer Proposed Planting Schedule
- 4 SHRUBS AND GROUNDCOVERS**
 Understorey planting and groundcovers are proposed to provide a cohesive and layered landscape treatment that reinforces the subtropical character and enhances visual amenity at the pedestrian scale. Planting includes a mix of hardy, low-maintenance native and subtropical species to provide colour, texture, and seasonal interest, while maintaining clear sightlines to building entries and signage. Species are selected to ensure durability in coastal conditions and compatibility with adjoining verge and streetscape.
 Refer Proposed Planting Schedule
- 5 SHADE TOLERANT PLANTING**
 Provide shade-tolerant, low-maintenance species to ensure robust planting performance in low-light areas, maintain ground cover, and contribute to ongoing visual amenity and reduce maintenance. Refer Proposed Planting Schedule
- 6 CLIMBERS**
 Climbers and vertical greening are proposed to provide additional landscape softening to breakout spaces, contributing to the subtropical landscape character and enhancing visual amenity to these recreational areas. Proposed climbers will be supported on an integrated trellis/wire frame structure designed to encourage coverage. Selected species are hardy, low-maintenance and suited to the proposed conditions, providing vertical greenery, seasonal interest and additional softening of the proposed building.
 Refer Proposed Planting Schedule (ie: *Stephanotis floribunda*)
- 7 CASCADING PLANTS**
 Provide cascading plant species to podium planters to soften parapets and slab edges, create a lush, layered subtropical presentation and enhance visual amenity when viewed from the street and upper levels. Species are to be hardy, low-maintenance selections suited to podium conditions (exposure, wind and limited soil depths), providing dense trailing cover for year-round greenery and additional landscape softening of built elements.
 Refer Proposed Planting Schedule (ie: *Cissis antarctica*, *Ipomea pes-caprae*)





- 1 LARGE SUBTROPICAL TREES**
 Provide large tall canopy tree species within designated deep planting zones, capable of achieving a minimum height of 15m at maturity, to deliver shade to the frontage, enhance visual amenity and soften the presentation of the proposed building, with proposed trees integrated into the site planning of the proposed development.
 Refer Proposed Planting Schedule (ie: *Agathis robusta*, *Araucaria columnaris*)
- 2 COLUMNAR TREES**
 Provide columnar tree planting to deliver vertical softening and screening of the proposed building to the streetscape and adjoining properties, contributing to a lush subtropical presentation. Where located within the proposed development, trees are to be integrated to create a dramatic, cohesive subtropical green presentation to streetscape frontages and/or neighbouring sites.
 Refer Proposed Planting Schedule (ie: *Elaeocarpus eumundii*)
- 3 SCREEN PLANTING**
 Provide dense screen planting using layered large shrubs if space, permits, and small trees where appropriate, to provide privacy and reduce overlooking to adjoining properties. Species are to be predominantly hardy native or subtropical selections, capable of achieving effective year-round screening, with low maintenance requirements once established and suitability to local microclimatic conditions. Refer Proposed Planting Schedule
- 4 SHRUBS AND GROUNDCOVERS**
 Understorey planting and groundcovers are proposed to provide a cohesive and layered landscape treatment that reinforces the subtropical character and enhances visual amenity at the pedestrian scale. Planting includes a mix of hardy, low-maintenance native and subtropical species to provide colour, texture, and seasonal interest, while maintaining clear sightlines to building entries and signage. Species are selected to ensure durability in coastal conditions and compatibility with adjoining verge and streetscape.
 Refer Proposed Planting Schedule
- 5 SHADE TOLERANT PLANTING**
 Provide shade-tolerant, low-maintenance species to ensure robust planting performance in low-light areas, maintain ground cover, and contribute to ongoing visual amenity and reduce maintenance. Refer Proposed Planting Schedule
- 6 CLIMBERS**
 Climbers and vertical greening are proposed to provide additional landscape softening to breakout spaces, contributing to the subtropical landscape character and enhancing visual amenity to these recreational areas. Proposed climbers will be supported on an integrated trellis/wire frame structure designed to encourage coverage. Selected species are hardy, low-maintenance and suited to the proposed conditions, providing vertical greenery, seasonal interest and additional softening of the proposed building.
 Refer Proposed Planting Schedule (ie: *Stephanotis floribunda*)
- 7 CASCADING PLANTS**
 Provide cascading plant species to podium planters to soften parapets and slab edges, create a lush, layered subtropical presentation and enhance visual amenity when viewed from the street and upper levels. Species are to be hardy, low-maintenance selections suited to podium conditions (exposure, wind and limited soil depths), providing dense trailing cover for year-round greenery and additional landscape softening of built elements.
 Refer Proposed Planting Schedule (ie: *Cissus antarctica*, *Ipomea pes-caprae*)





PROPOSED PODIUM PLANTER
Refer Architectural drawings

PROPOSED BUILDING

VICTORIA STREET

LUTWYCHE ROAD

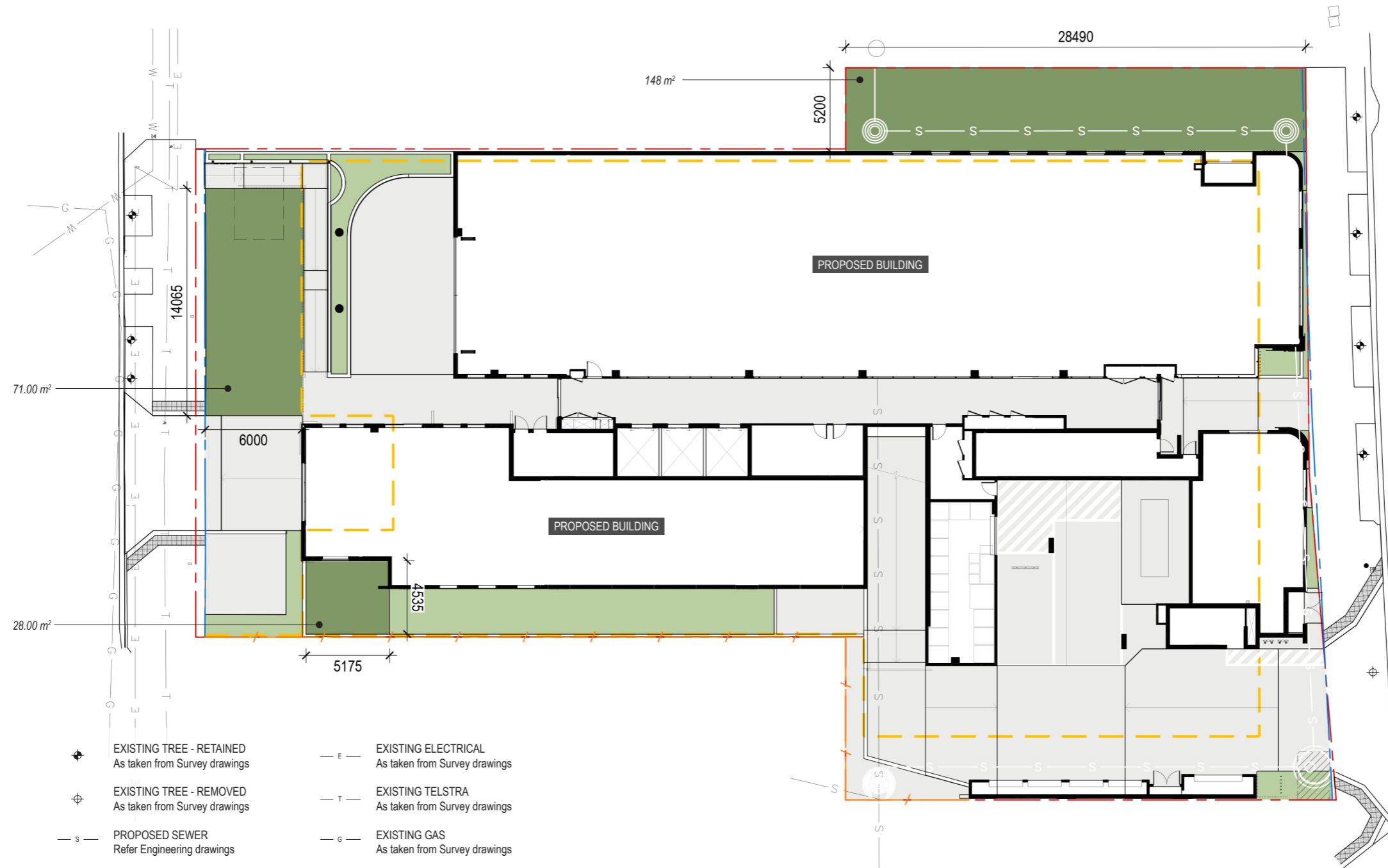
- 1** LARGE SUBTROPICAL TREES
Provide large tall canopy tree species within designated deep planting zones, capable of achieving a minimum height of 15m at maturity, to deliver shade to the frontage, enhance visual amenity and soften the presentation of the proposed building, with proposed trees integrated into the site planning of the proposed development.
Refer Proposed Planting Schedule (ie: *Agathis robusta*, *Araucaria columnaris*)
- 2** COLUMNAR TREES
Provide columnar tree planting to deliver vertical softening and screening of the proposed building to the streetscape and adjoining properties, contributing to a lush subtropical presentation. Where located within the proposed development, trees are to be integrated to create a dramatic, cohesive subtropical green presentation to streetscape frontages and/or neighbouring sites.
Refer Proposed Planting Schedule (ie: *Elaeocarpus eumundii*)
- 3** SCREEN PLANTING
Provide dense screen planting using layered large shrubs if space, permits, and small trees where appropriate, to provide privacy and reduce overlooking to adjoining properties. Species are to be predominantly hardy native or subtropical selections, capable of achieving effective year-round screening, with low maintenance requirements once established and suitability to local microclimatic conditions. Refer Proposed Planting Schedule
- 4** SHRUBS AND GROUNDCOVERS
Understorey planting and groundcovers are proposed to provide a cohesive and layered landscape treatment that reinforces the subtropical character and enhances visual amenity at the pedestrian scale. Planting includes a mix of hardy, low-maintenance native and subtropical species to provide colour, texture, and seasonal interest, while maintaining clear sightlines to building entries and signage. Species are selected to ensure durability in coastal conditions and compatibility with adjoining verge and streetscape.
Refer Proposed Planting Schedule
- 5** SHADE TOLERANT PLANTING
Provide shade-tolerant, low-maintenance species to ensure robust planting performance in low-light areas, maintain ground cover, and contribute to ongoing visual amenity and reduce maintenance. Refer Proposed Planting Schedule
- 6** CLIMBERS
Climbers and vertical greening are proposed to provide additional landscape softening to breakout spaces, contributing to the subtropical landscape character and enhancing visual amenity to these recreational areas. Proposed climbers will be supported on an integrated trellis/wire frame structure designed to encourage coverage. Selected species are hardy, low-maintenance and suited to the proposed conditions, providing vertical greenery, seasonal interest and additional softening of the proposed building.
Refer Proposed Planting Schedule (ie: *Stephanotis floribunda*)
- 7** CASCADING PLANTS
Provide cascading plant species to podium planters to soften parapets and slab edges, create a lush, layered subtropical presentation and enhance visual amenity when viewed from the street and upper levels. Species are to be hardy, low-maintenance selections suited to podium conditions (exposure, wind and limited soil depths), providing dense trailing cover for year-round greenery and additional landscape softening of built elements.
Refer Proposed Planting Schedule (ie: *Cissus antarctica*, *Ipomea pes-caprae*)



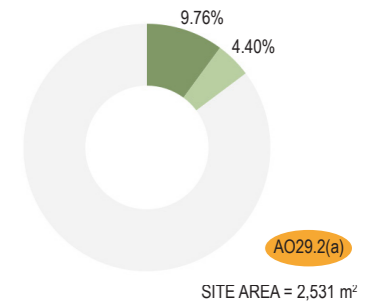
BCC DS
RECEIVED
07/05/2026
APPLICATION REF
A006935512



DEEP PLANTING CALCULATIONS



DEEP PLANTING AREAS = 247.00 m²
 Min. 4 x 4m, open to sky
 MISC PLANTING AREAS = 111.30 m²
 Planting not considered deep planting



— / — PROPOSED FENCE
 Refer Architectural drawings
— / — BASEMENT/ LEVEL BELOW
 Refer Architectural drawings
● EXISTING POWER POLE
 As taken from Survey drawings

⊕ EXISTING TREE - RETAINED
 As taken from Survey drawings
⊖ EXISTING TREE - REMOVED
 As taken from Survey drawings
— s — PROPOSED SEWER
 Refer Engineering drawings

— E — EXISTING ELECTRICAL
 As taken from Survey drawings
— T — EXISTING TELSTRA
 As taken from Survey drawings
— G — EXISTING GAS
 As taken from Survey drawings

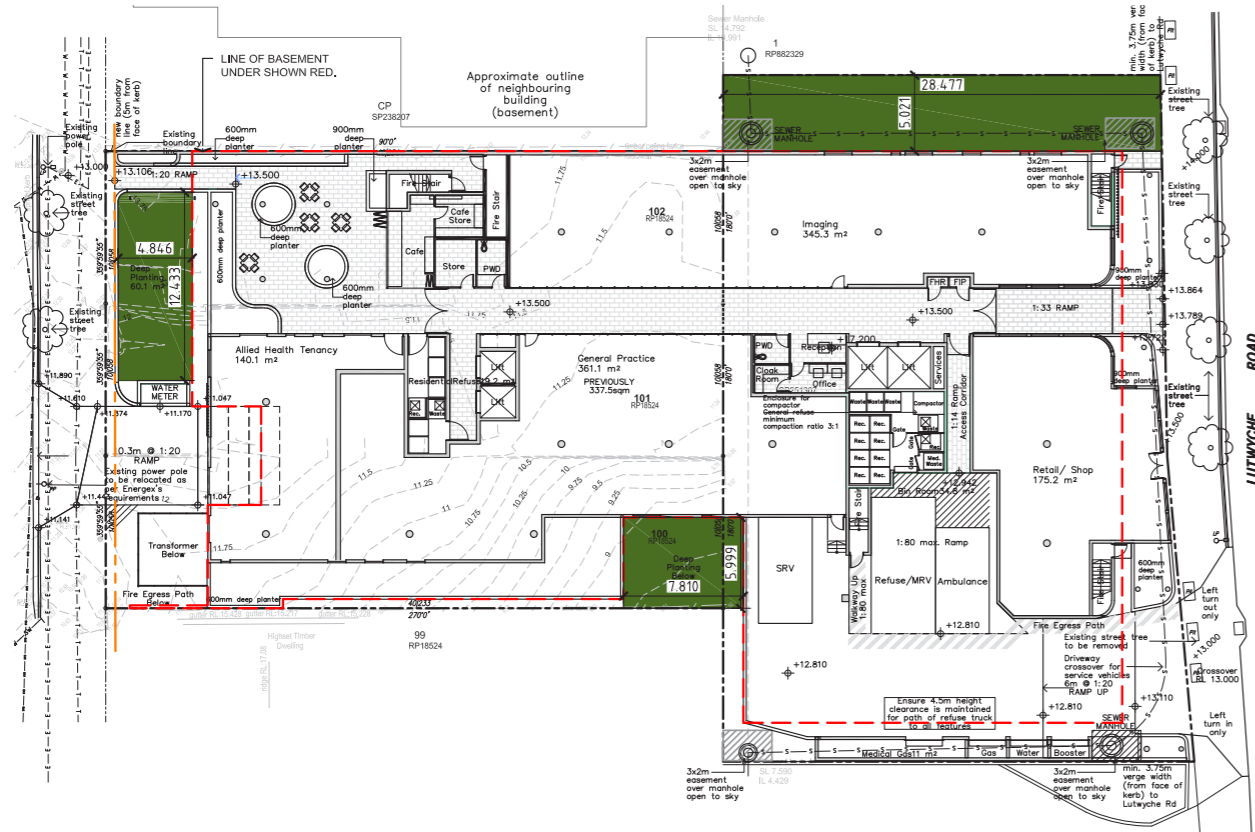


BCC DS
 RECEIVED
 07/05/2026
 APPLICATION REF
 A006935512



PREVIOUS APPROVED LANDSCAPE CONCEPT PLAN

BCC Reference A005567981



LEGEND

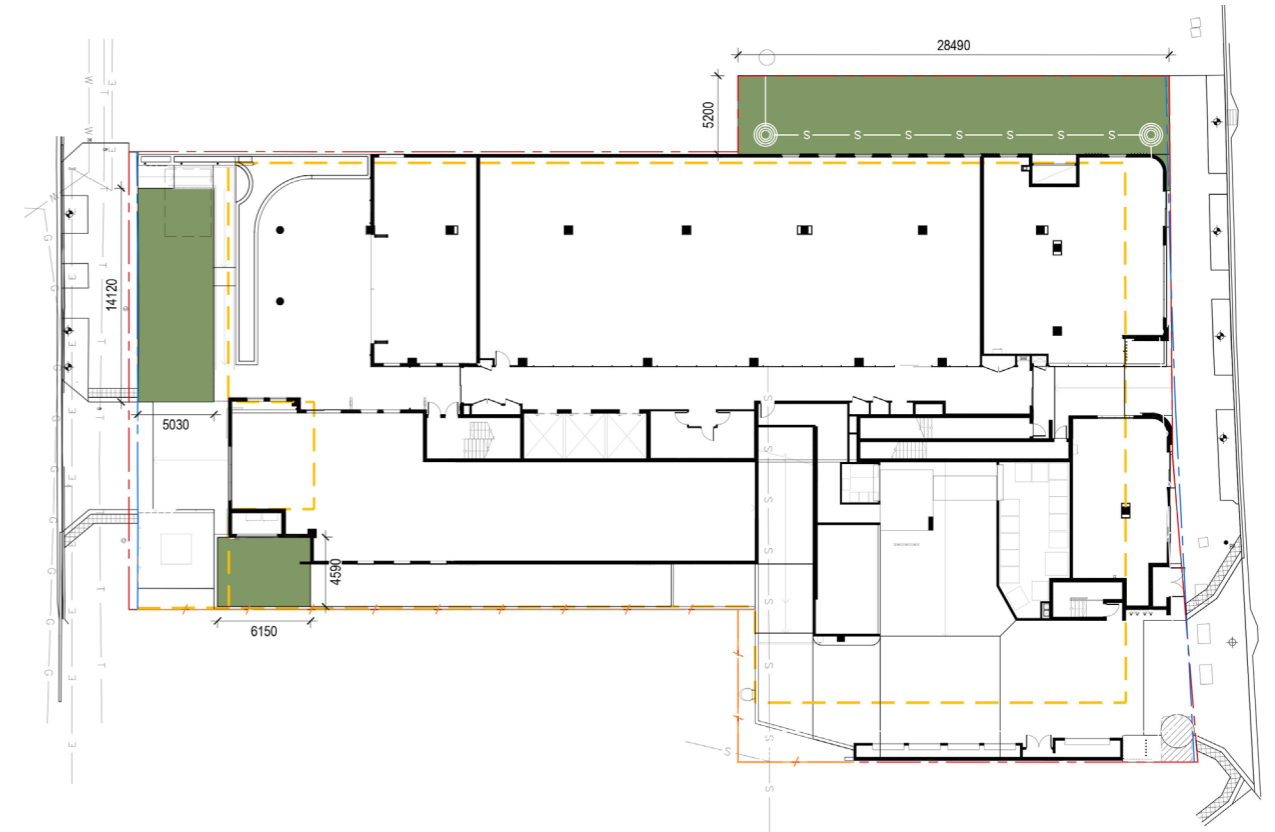
DEEP PLANTING AREAS = 250m² = 10% of site area
Min 4m wide

TOTAL SITE AREA = 2516m²

TOTAL DEEP PLANTING = 250 m² = 10% of site area

CURRENTLY PROPOSED LANDSCAPE CONCEPT PLAN

As part of Minor Change submission



LEGEND

DEEP PLANTING AREAS = 247.00 m²
Min. 4 x 4m, open to sky

TOTAL SITE AREA = 2531m²

TOTAL DEEP PLANTING = 247.00 m² = 9.76% of site area



NORTH-WEST ELEVATION

SCALE 1:200 @ A3



1 LARGE SUBTROPICAL TREES

Provide large tall canopy tree species within designated deep planting zones, capable of achieving a minimum height of 15m at maturity, to deliver shade to the frontage, enhance visual amenity and soften the presentation of the proposed building, with proposed trees integrated into the site planning of the proposed development.
Refer Proposed Planting Schedule (ie: *Agathis robusta*, *Araucaria columnaris*)

2 COLUMNAR TREES

Provide columnar tree planting to deliver vertical softening and screening of the proposed building to the streetscape and adjoining properties, contributing to a lush subtropical presentation. Where located within the proposed development, trees are to be integrated to create a dramatic, cohesive subtropical green presentation to streetscape frontages and/or neighbouring sites.
Refer Proposed Planting Schedule (ie: *Elaeocarpus eumundii*)

3 SCREEN PLANTING

Provide dense screen planting using layered large shrubs if space, permits, and small trees where appropriate, to provide privacy and reduce overlooking to adjoining properties. Species are to be predominantly hardy native or subtropical selections, capable of achieving effective year-round screening, with low maintenance requirements once established and suitability to local microclimatic conditions. Refer Proposed Planting Schedule

4 SHRUBS AND GROUNDCOVERS

Understorey planting and groundcovers are proposed to provide a cohesive and layered landscape treatment that reinforces the subtropical character and enhances visual amenity at the pedestrian scale. Planting includes a mix of hardy, low-maintenance native and subtropical species to provide colour, texture, and seasonal interest, while maintaining clear sightlines to building entries and signage. Species are selected to ensure durability in coastal conditions and compatibility with adjoining verge and streetscape.
Refer Proposed Planting Schedule

5 SHADE TOLERANT PLANTING

Provide shade-tolerant, low-maintenance species to ensure robust planting performance in low-light areas, maintain ground cover, and contribute to ongoing visual amenity and reduce maintenance. Refer Proposed Planting Schedule

6 CLIMBERS

Climbers and vertical greening are proposed to provide additional landscape softening to breakout spaces, contributing to the subtropical landscape character and enhancing visual amenity to these recreational areas. Proposed climbers will be supported on an integrated trellis/wire frame structure designed to encourage coverage. Selected species are hardy, low-maintenance and suited to the proposed conditions, providing vertical greenery, seasonal interest and additional softening of the proposed building.
Refer Proposed Planting Schedule (ie: *Stephanotis floribunda*)

7 CASCADING PLANTS

Provide cascading plant species to podium planters to soften parapets and slab edges, create a lush, layered subtropical presentation and enhance visual amenity when viewed from the street and upper levels. Species are to be hardy, low-maintenance selections suited to podium conditions (exposure, wind and limited soil depths), providing dense trailing cover for year-round greenery and additional landscape softening of built elements.
Refer Proposed Planting Schedule (ie: *Cissus antarctica*, *Ipomea pes-caprae*)