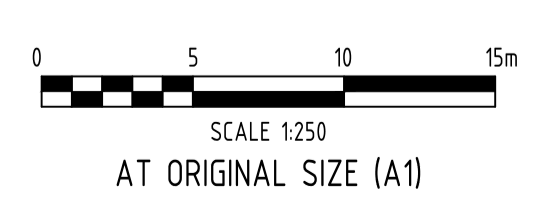


ALL DETAILS SHOWN ARE
SUBJECT TO FURTHER
DETAILED DESIGN

PRELIMINARY
NOT FOR CONSTRUCTION

Rev	Date	Description	By	Chk
04	15.05.26	PRELIMINARY - ISSUED FOR INFORMATION	LDV	ML
03	03.03.26	PRELIMINARY - ISSUED FOR INFORMATION	CM	ML
02	10.12.25	PRELIMINARY - ISSUED FOR INFORMATION	LDV	ML
01	28.04.25	PRELIMINARY - ISSUED FOR INFORMATION	CM	ML

**BCC DS
RECEIVED**
25/05/2026
APPLICATION REF
A006761597

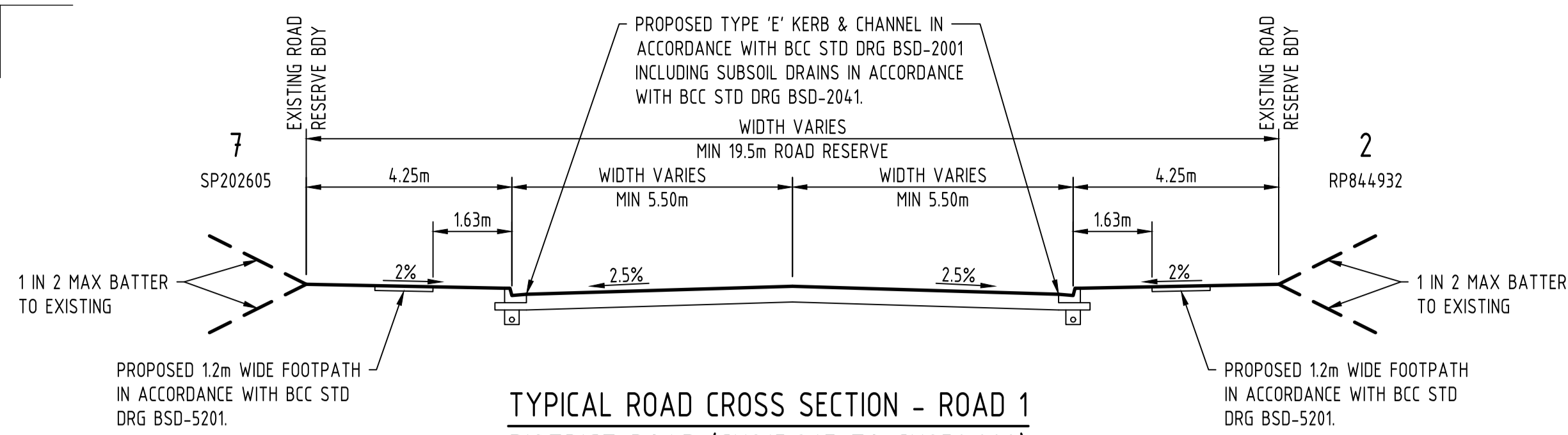


ADG
T: 1300 657 402 E: info@adg.com W: www.adg.com
Quality Assurance ISO 9001:2015 | Work Health Safety ISO 45001:2018
Environmental Management ISO 14001:2015

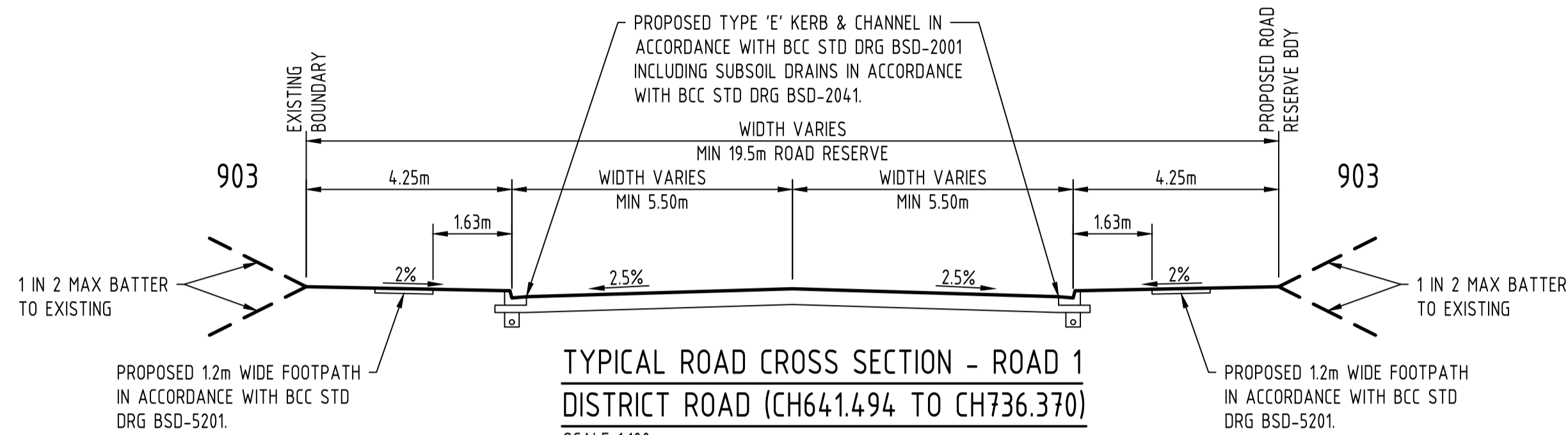
Client
GARDNER RD DEVELOPMENTS PTY LTD
Project Name
**198 & 202 GARDNER ROAD
ROCHEDALE, QLD, 4123**

Discipline CIVIL		Status PRELIMINARY
Designed By LDV	Checked By ML	Approved By ML
Project No. 25015	Drawn By LDV	Scale at A1 1:250

Title PRELIMINARY EARTHWORKS SITE SECTIONS	
Drawing No. DA301	Revision 04

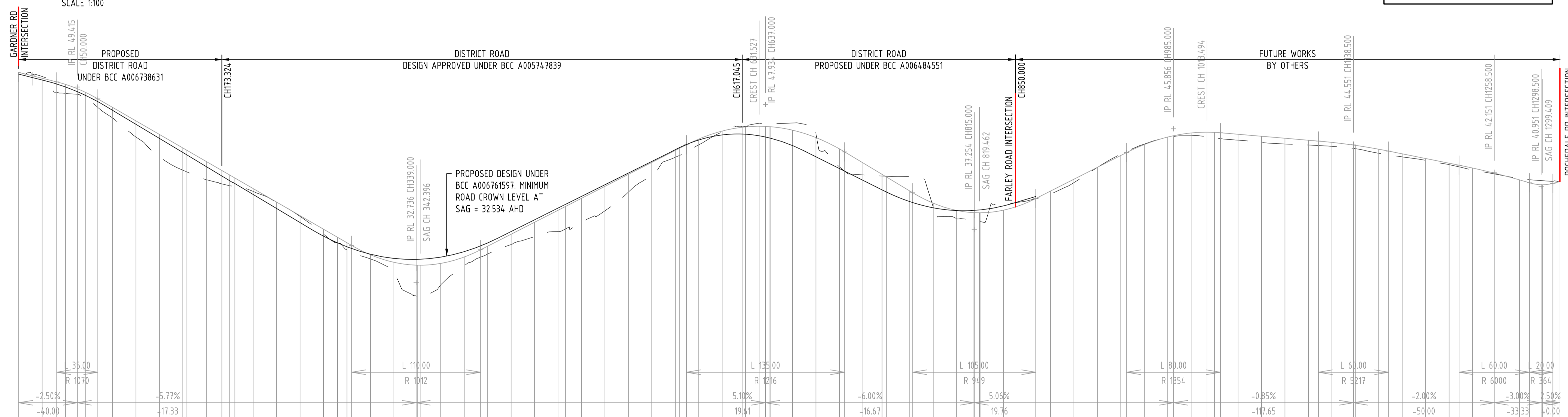


**TYPICAL ROAD CROSS SECTION - ROAD 1
DISTRICT ROAD (CH815.967 TO CH850.000)**
SCALE 1:100



**TYPICAL ROAD CROSS SECTION - ROAD 1
DISTRICT ROAD (CH641.494 TO CH736.370)**
SCALE 1:100

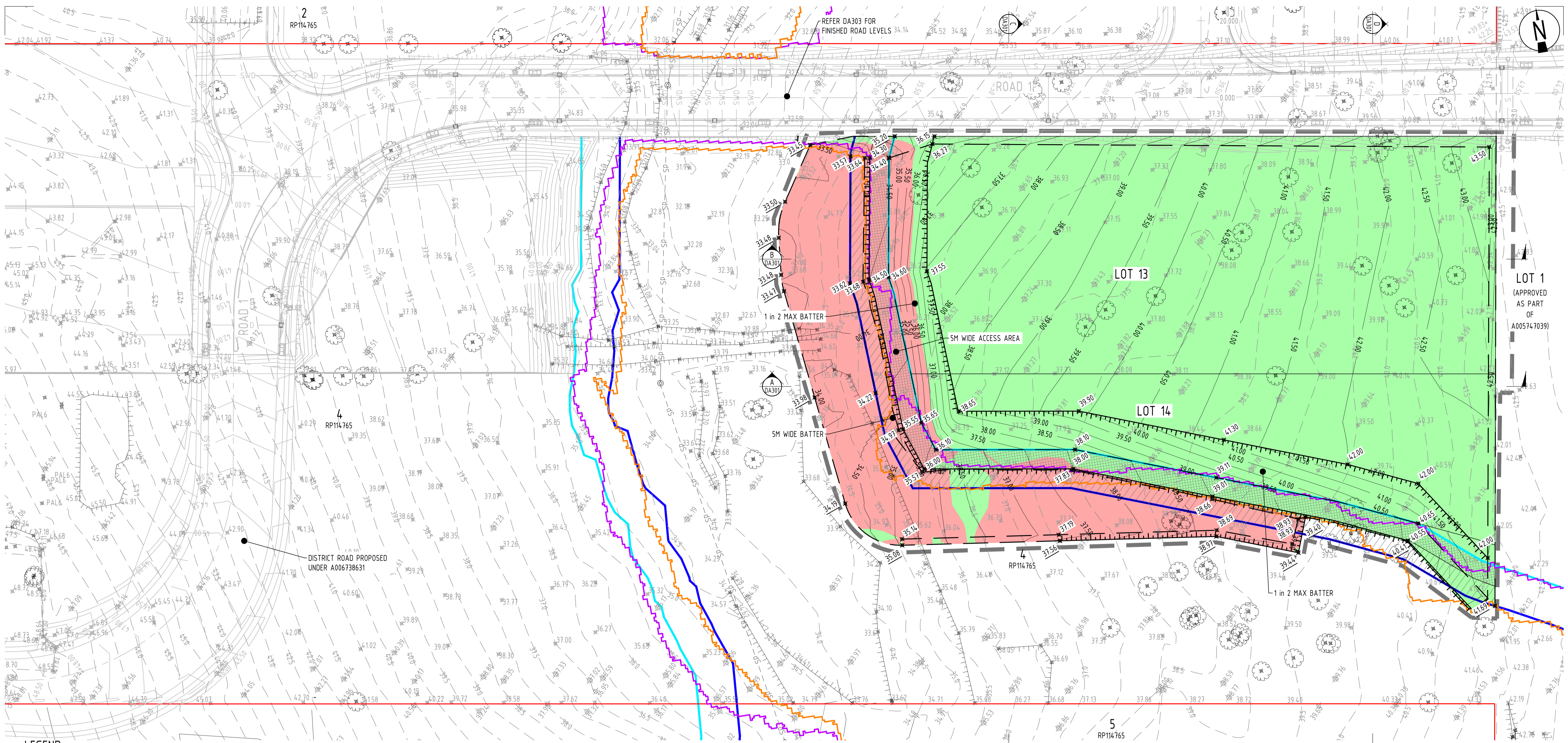
ALL DETAILS SHOWN ARE
SUBJECT TO FURTHER
DETAILED DESIGN



Vertical Curve Length (m)
Vertical Curve Radius (m)
Vertical Grade (%)
Vertical Grade (1 in ...)

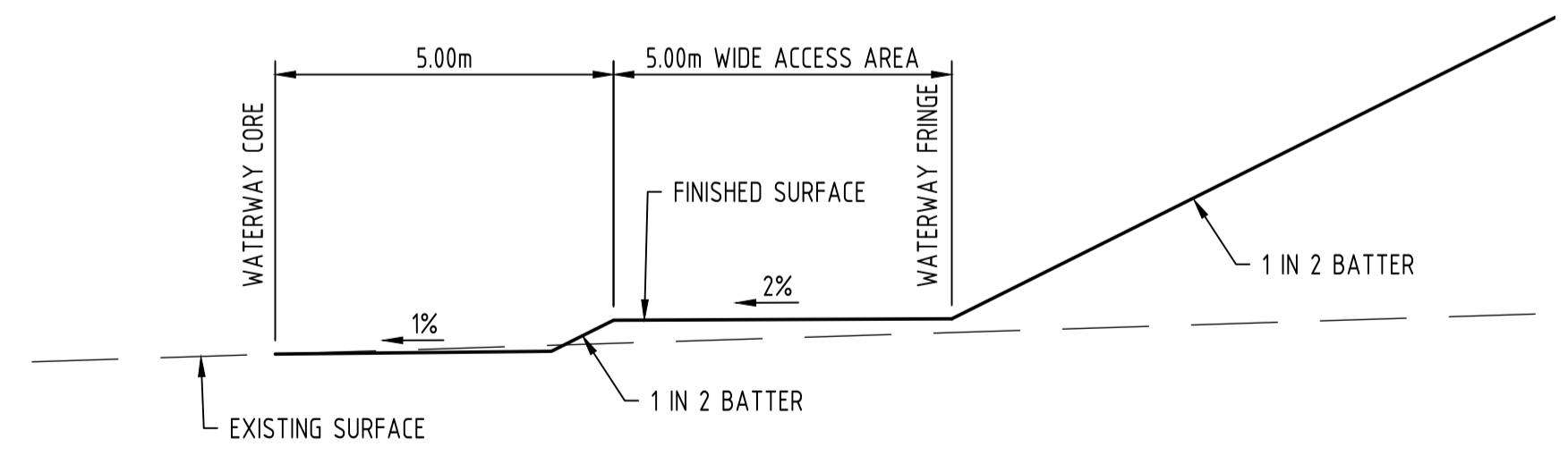
DATUM RL17.000

CUT / FILL DEPTH	DESIGN LEVELS ON ROAD CL	EXISTING SURFACE ON ROAD CL	CHAINAGE
0.079	50.665	50.585	0.000
-0.148	50.165	50.313	20.000
0.895	49.852	48.958	32.500
0.168	49.633	48.871	40.000
0.478	49.412	48.933	50.000
0.219	49.191	48.974	60.000
0.481	48.970	48.483	70.000
0.730	48.749	47.992	80.000
0.893	48.528	47.683	90.000
1.376	48.307	47.310	100.000
1.917	48.086	46.878	120.000
1.806	47.865	46.446	140.000
1.843	47.644	46.014	160.000
1.547	47.423	45.582	180.000
1.139	47.202	45.150	200.000
0.913	46.981	44.718	220.000
0.714	46.760	44.286	240.000
0.241	46.539	43.854	260.000
0.040	46.318	43.422	280.000
0.063	46.097	42.990	300.000
0.421	45.876	42.558	320.000
0.480	45.655	42.126	340.000
0.607	45.434	41.694	360.000
0.547	45.213	41.262	380.000
0.352	44.992	40.830	400.000
0.150	44.771	40.398	420.000
0.266	44.550	39.966	440.000
0.626	44.329	39.534	460.000
0.672	44.108	39.102	480.000
1.818	43.887	38.670	500.000
0.747	43.666	38.238	520.000
0.266	43.445	37.806	540.000
0.881	43.224	37.374	560.000
1.723	43.003	36.942	580.000
1.817	42.782	36.510	600.000
1.820	42.561	36.078	620.000
2.081	42.340	35.646	640.000
2.085	42.119	35.214	660.000
1.511	41.898	34.782	680.000
1.083	41.677	34.350	700.000
0.581	41.456	33.918	720.000
0.654	41.235	33.486	740.000
0.595	41.014	33.054	760.000
0.493	40.793	32.622	780.000
-0.039	40.572	32.190	800.000
-0.255	40.351	31.758	820.000
-0.243	40.130	31.326	840.000
-0.231	39.909	30.894	860.000
-0.247	39.688	30.462	880.000
-0.608	39.467	30.030	900.000
-0.334	39.246	29.598	920.000
1.533	39.025	29.166	940.000
1.652	38.804	28.734	960.000
1.030	38.583	28.302	980.000
-0.060	38.362	27.870	1000.000
0.142	38.141	27.438	1020.000
0.1754	37.920	27.006	1040.000
-1.244	37.699	26.574	1060.000
-1.336	37.478	26.142	1080.000
0.331	37.257	25.710	1100.000
0.700	37.036	25.278	1120.000
0.669	36.815	24.846	1140.000
0.658	36.594	24.414	1160.000
0.333	36.373	23.982	1180.000
0.745	36.152	23.550	1200.000
-0.523	35.931	23.118	1220.000
0.013	35.710	22.686	1240.000
0.260	35.489	22.254	1260.000
0.288	35.268	21.822	1280.000
0.006	35.047	21.390	1300.000
-0.112	34.826	20.958	1320.000
-0.402	34.605	20.526	1340.000
0.029	34.384	20.094	1360.000
0.067	34.163	19.662	1380.000
0.234	33.942	19.230	1400.000
0.394	33.721	18.798	1420.000
0.465	33.500	18.366	1440.000
0.459	33.279	17.934	1460.000
0.501	33.058	17.502	1480.000
0.532	32.837	17.070	1500.000
0.489	32.616	16.638	1520.000
0.006	32.395	16.206	1540.000
0.006	32.174	15.774	1560.000
0.006	31.953	15.342	1580.000
0.006	31.732	14.910	1600.000
0.006	31.511	14.478	1620.000
0.006	31.290	14.046	1640.000
0.006	31.069	13.614	1660.000
0.006	30.848	13.182	1680.000
0.006	30.627	12.750	1700.000
0.006	30.406	12.318	1720.000
0.006	30.185	11.886	1740.000
0.006	29.964	11.454	1760.000
0.006	29.743	11.022	1780.000
0.006	29.522	10.590	1800.000
0.006	29.301	10.158	1820.000
0.006	29.080	9.726	1840.000
0.006	28.859	9.294	1860.000
0.006	28.638	8.862	1880.000
0.006	28.417	8.430	1900.000
0.006	28.196	7.998	1920.000
0.006	27.975	7.566	1940.000
0.006	27.754	7.134	1960.000
0.006	27.533	6.702	1980.000
0.006	27.312	6.270	2000.000
0.006	27.091	5.838	2020.000
0.006	26.870	5.406	2040.000
0.006	26.649	4.974	2060.000
0.006	26.428	4.542	2080.000
0.006	26.207	4.110	2100.000
0.006	25.986	3.678	2120.000
0.006	25.765	3.246	2140.000
0.006	25.544	2.814	2160.000
0.006	25.323	2.382	2180.000
0.006	25.102	1.950	2200.000
0.006	24.881	1.518	2220.000
0.006	24.660	1.086	2240.000
0.006	24.439	0.654	2260.000
0.006	24.218	0.222	2280.000
0.006	23.997	-0.210	2300.000
0.006	23.776	-0.642	2320.000
0.006	23.555	-1.074	2340.000
0.006	23.334	-1.506	2360.000
0.006	23.113	-1.938	2380.000
0.006	22.892	-2.370	2400.000
0.006	22.671	-2.802	2420.000
0.006	22.450	-3.234	2440.000
0.006	22.229	-3.666	2460.000
0.006	22.008	-4.098	2480.000
0.006	21.787	-4.530	2500.000
0.006	21.566	-4.962	2520.000
0.006	21.345	-5.394	2540.000
0.006	21.124	-5.826	2560.000
0.006	20.903	-6.258	2580.000
0.006	20.682	-6.690	2600.000
0.006	20.461	-7.122	2620.000
0.006	20.240	-7.554	2640.000
0.006	20.019	-7.986	2660.000
0.006	19.798	-8.418	2680.000
0.006	19.577	-8.850	2700.000
0.006	19.356	-9.282	2720.000
0.006	19.135	-9.714	2740.000
0.006	18.914	-10.146	2760.000
0.006	18.693	-10.578	2780.000
0.006	18.472	-11.010	2800.000
0.006	18.251	-11.442	2820.000
0.006	18.030	-11.874	2840.000
0.006	17.809	-12.306	2860.000
0.006	17.588	-12.738	2880.000
0.006	17.367	-13.170	2900.000
0.006	17.146	-13.602	2920.000
0.006	16.925	-14.034	2940.000
0.006	16.704	-14.466	2960.000
0.006	16.483	-14.898	2980.000
0.006	16.262	-15.330	3000.000
0.006	16.041	-15.762	3020.000
0.006	15.820	-16.194	3040.000
0.006	15.599	-16.626	3060.000
0.006	15.378	-17.058	3080.000
0.006	15.157	-17.490	3100.000
0.006	14.936	-17.922	3120.000
0.006	14.715	-18.354	3140.000
0.006	14.494	-18.786	3160.000
0.006	14.273	-19.218	3180.000
0.006	14.052	-19.650	3200.000
0.006	13.831	-20.082	3220.000
0.006	13.610	-20.514	3240.000
0.006	13.389	-20.946	3260.000
0.006	13.168	-21.378	3280.000
0.006	12.947	-21.810	3300.000
0.006	12.726	-22.242	3320.000
0.006	12.505	-22.674	3340.000
0.006	12.284	-23.106	3360.000
0.006	12.063	-23.538	3380.000
0.006	11.842	-23.970	3400.000
0.006	11.621	-24.402	3420.000
0.006	11.400	-24.834	3440.000
0.006	11.179	-25.266	3460.000
0.006	10.958	-25.698	3480.000
0.006	10.737	-26.130	3500.000
0.006	10.516	-26.562	3520.000
0.006	10.295	-26.994	3540.000
0.006	10.074	-27.426	3560.000
0.006	9.853	-27.858	3580.000
0.006	9.632	-28.290	3600.000
0.006	9.411	-28.722	3620.000
0.006	9.190	-29.154	3640.000
0.006	8.969	-29.586	3660.000
0.006	8.748	-30.018	3680.000
0.006	8.527	-30.450	3700.000
0.006	8.306	-30.882	3720.000
0.006	8.085	-31.314	3740.000
0.006	7.864	-31.746	3760.000
0.006	7.643	-32.178	3780.000
0.006	7.422	-32.610	3800.000
0.006	7.201	-33.042	3820.000
0.006	6.980	-33.474	3840.000
0.006	6.759	-33.906	3860.000
0.006	6.538	-34.338	3880.000
0.006	6.317	-34.770	3900.000
0.006	6.096	-35.202	3920.000
0.006	5.875	-35.634	3940.000
0.006	5.654	-36.066	3960.000
0.006	5.433	-36.498	3980.000
0.006	5.212	-36.930	4000.000
0.006	4.991	-37.362	4020.000
0.006	4.770	-37.794	4040.000
0.006	4.549	-38.226	4060.000
0.006	4.328	-38.658	4080.000
0.006	4.107	-39.090	4100.000
0.006	3.886	-39.522	4120.000
0.006	3.665	-39.954	4140.000
0.006	3.444	-40.386	4160.000
0.006	3.223	-40.818	4180.000
0.006	3.002	-41.250	4200.000
0.006	2.781	-41.682	4220.000
0.006	2.560	-42.114	4240.000
0.006	2.339	-42.546	4260.000
0.006	2.118	-42.978	4280.000
0.006	1.897	-43.410	4300.000
0.006	1.676	-43.842	4320.000
0.006	1.455	-44.274	4340.000
0.006	1.234	-44.706	4360.000
0.006	1.013	-45.138	4380.000
0.006	0.792	-45.570	4400.000
0.006	0.571	-46.002	4420.000
0.006	0.350	-46.434	4440.000
0.006	0.129	-46.866	4460.000
0.006	-0.092	-47.298	4480.000
0.006	-0.311	-47.730	4500.000
0.006	-0.530	-48.162	4520.000
0.006	-0.749	-48.594	4540.000
0.006	-0.968	-49.026	4560.000
0.006	-1.187	-49.458	4580.000
0.006	-1.406	-49.890	4600.000
0.006	-1.625	-50.322	4620.000
0.006			



LEGEND

- | | | | |
|----------|---------------------------------------|-------|-----------------------------------------------------|
| — | SITE BOUNDARY | — W — | PREVIOUS STAGE WATER MAIN |
| --- | EXISTING PROPERTY BOUNDARY | --- | PREVIOUS STAGE NOMINAL KERB LINE |
| — 12.0 — | EXISTING SURFACE CONTOURS | --- | PREVIOUS STAGE ROAD CENTRE LINE |
| — 12.0 — | FINISHED SURFACE CONTOURS | --- | EXISTING BATTER |
| ✕ 34.42 | EXISTING SURFACE LEVEL | --- | EXISTING FENCE |
| ✕ 34.42 | FINISHED SURFACE LEVEL | --- | PROPOSED ACCESS AREA |
| --- | EXISTING NOMINAL KERB LINE | --- | PROPOSED BATTER |
| --- | EXISTING EDGE OF BITUMEN LINE | --- | LIMIT OF WORKS |
| --- | EXISTING ROAD CENTERLINE | --- | PROPOSED EARTHWORKS PAD |
| --- | EXISTING EDGE OF BUILDING | --- | PROPOSED EARTHWORKS CUT |
| — SWD — | EXISTING STORMWATER DRAINAGE | --- | PROPOSED EARTHWORKS FILL |
| — dS — | EXISTING SEWER (RECORDS) | --- | POST DEVELOPMENT 39% AEP FLOOD LINE |
| — dW — | EXISTING WATER (RECORDS) | --- | POST DEVELOPMENT 1% AEP FLOOD LINE |
| — OE — | EXISTING OVERHEAD ELECTRICITY | --- | PROPOSED WATERWAY CORRIDOR (SLR) FRINGE (10m) |
| — dT — | EXISTING TELECOMMUNICATIONS (RECORDS) | --- | PROPOSED WATERWAY CORRIDOR (SLR) CORE (30m MINIMUM) |
| — SWD — | PREVIOUS STAGE STORMWATER DRAINAGE | --- | |



TYPICAL WATERWAY FOOTPATH SECTION
1:100

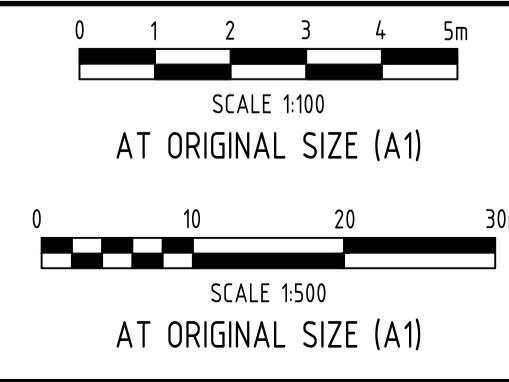
ALL DETAILS SHOWN ARE
SUBJECT TO FURTHER
DETAILED DESIGN

ADG INTELLECTUAL PROPERTY
All intellectual property rights (including, without limitation, all copyright and design rights) subsisting in the drawings and related information belong to ADG Engineers (Aust) Pty Ltd ("ADG").
Drawings or information are provided for general information purposes only and may not contain the full details required for construction. ADG makes no warranties, either express or implied, of merchantability and fitness of the drawings or data for any particular purpose.
ADG accepts no responsibility or liability for any loss or damage caused to the recipient or any third party through use of the drawings or related information.

**PRELIMINARY
NOT FOR CONSTRUCTION**

Rev	Date	Description	By	Chk
04	15.05.26	PRELIMINARY - ISSUED FOR INFORMATION	LDV	ML
03	03.03.26	PRELIMINARY - ISSUED FOR INFORMATION	CM	ML
02	10.12.25	PRELIMINARY - ISSUED FOR INFORMATION	LDV	ML
01	28.04.25	PRELIMINARY - ISSUED FOR INFORMATION	CM	ML

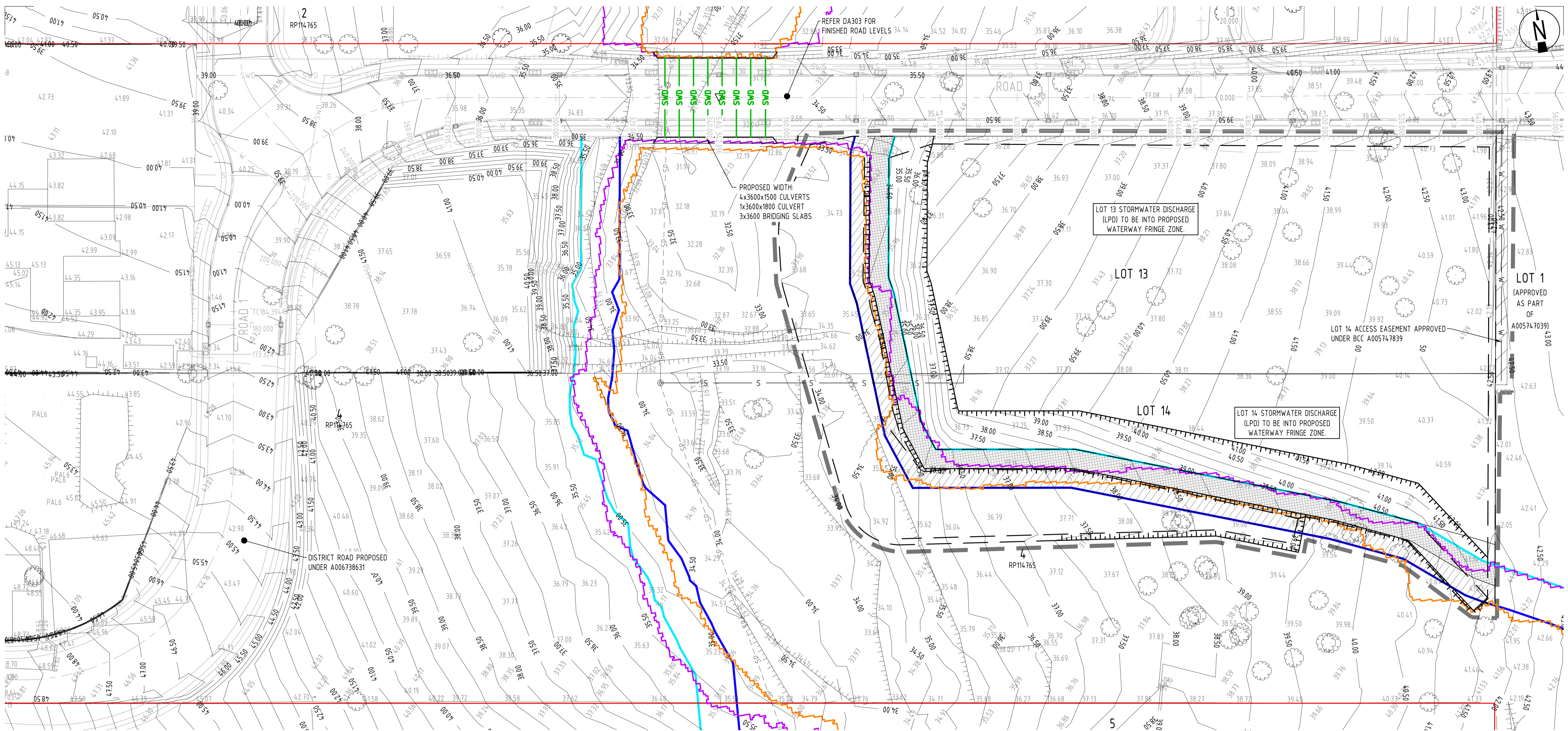
**BCC DS
RECEIVED**
25/05/2026
APPLICATION REF
A006761597



Client
GARDNER RD DEVELOPMENTS PTY LTD
Project Name
198 & 202 GARDNER ROAD
ROCHEDALE, QLD, 4123

Discipline CIVIL	Checked By ML	Status PRELIMINARY
Designed By LDV	Drawn By LDV	Approved By ML
Project No. 25015	Scale at A1 1:500	

Title PRELIMINARY EARTHWORKS LAYOUT PLAN	Drawing No. DA300	Revision 04
------------------------------------------------	----------------------	----------------



LEGEND	
12.0	FINISHED SURFACE CONTOURS
---	SITE BOUNDARY
---	EXISTING PROPERTY BOUNDARY
---	EXISTING EASEMENT BOUNDARY
---	EXISTING NOMINAL KERB LINE
---	EXISTING EDGE OF BITUMEN LINE
---	EXISTING ROAD CENTERLINE
---	EXISTING EDGE OF BUILDING
--- SWD ---	EXISTING STORMWATER DRAINAGE
--- dS --- dS ---	EXISTING SEWER (RECORDS)
--- dW --- dW ---	EXISTING WATER (RECORDS)
--- OE ---	EXISTING OVERHEAD ELECTRICITY
--- dT --- dT ---	EXISTING TELECOMMUNICATIONS (RECORDS)
---	PREVIOUS STAGE STORMWATER DRAINAGE
---	PREVIOUS STAGE WATER MAIN
---	PREVIOUS STAGE NOMINAL KERB LINE
---	PREVIOUS STAGE ROAD CENTRE LINE
---	EXISTING BATTER
---	EXISTING FENCE
---	PROPOSED ACCESS AREA
---	PROPOSED BATTER
---	LIMIT OF WORKS
---	PROPOSED STORMWATER DRAINAGE
S	PROPOSED SEWER MAIN
S	PREVIOUS STAGE SEWER MAIN
W	PROPOSED WATER MAIN
---	POST DEVELOPMENT 39% AEP FLOOD LINE
---	POST DEVELOPMENT 1% AEP FLOOD LINE
---	PROPOSED WATERWAY CORRIDOR (SLR) FRINGE (10m)
---	PROPOSED WATERWAY CORRIDOR (SLR) CORE (30m MINIMUM)
---	PROPOSED EASEMENTS

NOTES

- FOR ROADWORKS LONGITUDINAL SECTIONS REFER DRG No. DA303
- FOR ROADWORKS AND DRAINAGE TYPICAL CROSS SECTION REFER DRG No. DA303

ALL DETAILS SHOWN ARE SUBJECT TO FURTHER DETAILED DESIGN

ADG INTELLECTUAL PROPERTY

All intellectual property rights (including, without limitation, all copyright and design rights) subsisting in the drawings and related information belong to ADG Engineers (Aust) Pty Ltd ("ADG").

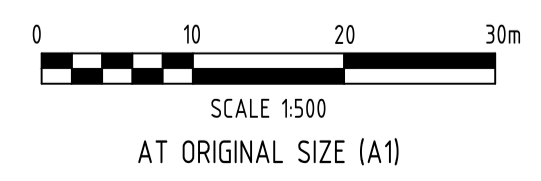
Drawings or information are provided for general information purposes only and may not contain the full details required for construction. ADG makes no warranties, either express or implied, of merchantability and fitness of the drawings or data for any particular purpose.

ADG accepts no responsibility or liability for any loss or damage caused to the recipient or any third party through use of the drawings or related information.

PRELIMINARY NOT FOR CONSTRUCTION

Rev	Date	Description	By	Chk
04	15.05.26	PRELIMINARY - ISSUED FOR INFORMATION	LDV	ML
03	03.03.26	PRELIMINARY - ISSUED FOR INFORMATION	CM	ML
02	10.12.25	PRELIMINARY - ISSUED FOR INFORMATION	LDV	ML
01	28.04.25	PRELIMINARY - ISSUED FOR INFORMATION	CM	ML

BCC DS RECEIVED
25/05/2026
APPLICATION REF
A006761597



ADG

T:1300 657 402 E: info@adg.com W: www.adg.com
Quality Assurance ISO 9001:2015 | Work Health Safety ISO 45001:2018
Environmental Management ISO 14001:2015

Client
GARDNER RD DEVELOPMENTS PTY LTD

Project Name
198 & 202 GARDNER ROAD
ROCHEDALE, QLD, 4123

Discipline	Status
CIVIL	PRELIMINARY

Designed By	Checked By	Approved By
LDV	ML	ML

Project No.	Drawn By	Scale at A1
25015	LDV	1:500

Title	Drawing No.	Revision
PRELIMINARY ROADWORK LAYOUT PLAN	DA302	04