

KEY PLAN

OWNERS MAINTENANCE GUIDELINE - Lots 12 & 13		
The intention with this Maintenance Guideline is to provide maintenance practice methods for ongoing vegetation health, which is a requirement for the covenanted Environmental Protection Zone (EPZ). Any form of building work or other disturbance to the Environmental Protection Zone area will not be permitted unless otherwise agreed to by Council. The following is a list of on-going maintenance activities to be undertaken within this zone.		
ACTION	GENERAL NOTE	FREQUENCY
Weeding	Removal of identified weed species from the Environmental Protection Zone is required. See State and Council Restricted Invasive Pest/Plant Weed Treatment for further details. Chemicals to be assessed for potential harm prior to application. Weeds not to be composted on site.	As required but preferably at a minimum six monthly. Prior to summer growth is
Infill planting	Any dead plants are to be replaced (when feasible) to retain planting density and species diversity. Species to be native for rehabilitation purpose and in accordance with this approved plan. Trees, shrubs and groundcovers to be included. Planting of exotic plant material within the Environmental Protection Zone is not permitted.	As required
Fertilizer Usage	Native plants in bushland revegetation areas generally should not be fertilised however, if required use a slow release fertiliser suitable for native plants. General purpose fertilizers with an N:P:K composition of about 12:14:10 can be applied safely to many Australian plants. Plants with phosphorous sensitivity such as Banksia, Grevillea, Telopea and Hakea should use N:P:K of 10:3:6, i.e. low 'P'.	NA
Watering	Any replacement plantings will require routine watering. Hand held or an automatic system can be used. Monitor weather conditions for watering needs i.e. plant health during extended dry periods. Sufficient mulch depth will assist in retaining moisture.	As required
Pruning	Pruning is intended to maintain form and prevent risk with removal of dead limbs. Dead limbs are naturally occurring. Seek advice for significant pruning, an over pruned tree can have adverse health affects. Any pruning to be supervised by a qualified arborist if not in accordance with the Natural Asset Local Law 2003 pruning exemptions.	As required
Vegetation removal	A NALL permit will be required for the removal of any native trees. Seek approval in writing from Council's Ecologists to the removal of any native trees prior to applying for a permit.	NA
Pest Treatment	Pest or disease outbreaks to be treated according to need. Information on treatments can be found by consulting local plant nursery.	As required
Rubbish Removal	Rubbish is to be removed from within the Environmental Protection Zone. Dumping of rubbish in Environmental Protection Zone areas will not be permitted.	NA
Fauna Boxes	Fauna habitat boxes have been installed in larger trees. Advice on their type and maintenance can be found by contacting the makers - Hollow Log Homes. Wildlife injury can be reported to the RSPCA on 1300 264 625.	NA
Fencing	Any new fencing proposed within or along the western, southern or eastern boundaries of the EPZ must be fauna friendly. Any new fencing proposed along the northern boundary of the EPZ interfacing with the development footprint must be pet exclusion fencing. Refer to Council's Wildlife movement fencing guidelines, available on the Council website for acceptable fencing types.	NA

LANDSCAPE ARCHITECTURE - ECOLOGY - ARBORICULTURE

BRISBANE 61 7 3012 0100 - SUNSHINE COAST - CENTRAL QLD

TENDER DRAWINGS
NOT FOR CONSTRUCTION

BCC DS RECEIVED
16/06/2026
APPLICATION REF
A007024702

SCHEDULE - LANDSCAPE & EXTERNAL WORKS				
Item	Code	Description	Specification	Unit
A PRELIMINARIES AND SITE WORKS, MINOR EARTHWORKS, DRAINAGE				
1 Site Establishment				
1	1	Preliminaries	Site setup, attendance at prestart, coord with civil and survey.	item
B HARDSCAPE				
2 Fences and Barriers				
2	1	F5	Fence type 5 - 1200 high fauna friendly fence	Lm
2	2	F6	Fence type 6 - 1500 high pet exclusion fence	Lm
2	3	Gate - F6	To match Fence type 6	Item
C SOFTSCAPE				
3 RV Rehabilitation				
3	1	Weed removal tool (herbicides, hand removal tools etc)	Refer to notes on Rehabilitation and or Reveg plans. Includes rubbish removal. Contractor to visit site to determine scope.	Item
3	2	Site mulch	Site mulch move and install 100mm depth	m ²
3	3	Tube Stock to EPZs TO REVEG AREAS	75mm	Each
3	4	Water retention additive for each plant	Green Harvest Rainsaver Water crystals or approved similar	Each
3	5	Stakes - 1 per plant	Green Harvest Rainsaver Water crystals or approved similar	Each
3	6	Tube Stock protection - Stakes and protection 1 to 2 stake per plant and 1 guard sleeve	3x 600x6-8mm HWD bamboo stakes and 1x 450mm x 350mm plastic sleeve or equivalent UV stabilised polypropylene fauna guard	Each
3	7	Slow release nutrient bags	Agriform or approved similar	Each
3	8	Replacement tube stock during maintenance period - If required ensure 100mm tube stock	100mm	Each
3	9	Fauna Boxes	HLH Homes - Timber of Cyplas	Each

REHABILITATION PLANTING SCHEDULE				
Project Name: 74 Redhead Street, Doolandella Project No: B4687L_A2_DA4_1				
	Trees - plants/m2	1 per	10	
	Shrubs - plants/m2	1 per	5	
	Groundcovers - plants/m2	1 per	1	
Code	Botanical Name	% Mix	RHA	
TREES				
ALP exc	Alphitonia excelsa	20%		
ANG woo	Angophora woodsiana	20%		
EUC see	Eucalyptus seeana	20%		
EUC rac	Eucalyptus racemosa	20%		
LOP sua	Lophostemon suaveolens	20%		
	Tree Total	100%	0	
SHRUBS				
ACA lei	Acacia leiocalyx	10%		
ACA dis	Acacia disparrima subsp. Disparrima	10%		
JAC sco	Jacksonia scoparia	20%		
OZO dio	Ozothamnus diosmifolius	15%		
LEP tri	Leptospermum trinervium	10%		
PET pub	Petalostigma pubescens	15%		
HAK flo	Hakea florulenta	10%		
MEL lin	Melaleuca linariifolia	10%		
	Shrub Total	100%	0	
GROUNDCOVERS				
CYM ref	Cymbopogon refractus	20%		
ALL sem	Allioteropsis semialata	10%		
ERE bim	Eremochloa bimaculata	20%		
GAH asp	Gahnia aspera	20%		
IMP cyl	Imperata cylindrica	10%		
PAN dec	Panicum decompositum	10%		
THE tri	Themeda triandra	10%		
	Groundcover Total	100%	0	
	TOTAL PLANTS		0	

JFP MAINTENANCE PROGRAM - PRIVATE LOT					
EP - Establishment Period MP - Maintenance Period (24 Months) Note: This is to be used as a guide only. Subject to site, weather, pest and disease conditions.					
REHABILITATION AREA	MAINTENANCE TREATMENT	ROLE/RESPONSIBILITY	FIRST YEAR FREQUENCY (INCLUDING ESTABLISHMENT MAINTENANCE PERIOD)	SECOND YEAR FREQUENCY (INCLUDING ESTABLISHMENT MAINTENANCE PERIOD)	NOTES
Revegetation	Watering	Landscape Contractor	Three in the first week, twice in the second week and once per week for the following 10 weeks followed by (subject to prevailing weather conditions): Month 1: 2 - 3 / week Months 2 - 4: 1 - 2 / week Months 4 - 12: As needed	Where needed for infill planting	Supply water from approved source. Apply sufficient water to ensure plant growth. Monitor weather conditions for watering needs.
	Fertilise	Landscape Contractor	Quarterly	Quarterly	Native plants in bushland revegetation areas generally should not be fertilised however, if required use a slow release fertiliser suitable for native plants.
	Weeding	Landscape Contractor	Seasonal - Sept - March months = 7 visits April - Aug months = 2 visits	Seasonal - Sept - March months = 5 visits April - Aug months = 2 visits	As required to prevent weed competition and/or weeds going to seed. Weeds are to be treated by spraying as per best practices. Eradication of weed species to all areas to be planted. Remove from site (do not woodchip) all woody weed species at base of stem (ground level) and apply herbicide (refer note) to all cut stumps. Weed species on site include (but not limited to): Lantana camara, Acacia disparrima, Acacia leiocalyx, cadaghi, Bryophyllum delagense, Megathyrus maximus. Creepers are also to be removed from site, these include but are not limited to: Asparagus aesthiopicus. Exotic Grasses, specifically Molasses grass and other weeds are to be brushed to a height of approximately 100mm above ground level. All brushed grass and weeds must be removed from the site. All weedy grasses are to be appropriately treated to ensure that they are fully removed. Refer to product information / MSDS for general usage and particularly with respect to wind and near to waterbodies.
	Pruning	Landscape Contractor	Six Monthly	Six Monthly	Prune per AS4373. Any pruning required to native trees must be conducted by a minimum AQF Level 3 qualified arborist.
	Infill Planting/Regeneration	Landscape Contractor	Quarterly	Quarterly	Where plant fail occurs supply and install replacement tube stock to existing specification in consultation with the Ecological Consultant. Plant identification required to ensure regeneration of planting stock occurs. Plant substitutes to be consulted. Replace barrier protection as needed- consult the Ecological Consultant.
	Dead and dying branches removal	Landscape Contractor			Dead or dying branches may be removed where overhanging or in close proximity to future dwellings. This work may require a NALL permit. Contact Council for future information.
	Refer to monitoring requirements on RP 02	Environmental Consultant	Quarterly	Quarterly	
Implementation certification	Upon implementing the works, provide implementation certification from a suitably qualified and experienced environmental practitioner to Council certifying that the works have been carried out in accordance with this plan. The 24-month maintenance period begins upon Council's confirmation in writing that the maintenance period has begun.				
Final certification	At the end of the 24-month maintenance period, provide final certification to Council from a suitably qualified environmental professional. Note where the certification reveals that the performance criteria of this plan have not been addressed, follow-up works may be requested by Council.				

C OPW MINOR CHANGE 2026-06-12 QS HQ HQ
B FOR APPROVAL 2026-03-02 HQ HQ DM
A FOR APPROVAL 2025-12-09 QS HQ DM

ISSUE DETAILS DATE DES DC QA

PROJECT TITLE
RESIDENTIAL SUBDIVISION
74 REDHEAD STREET,
DOOLANDELLA,
QLD 4077

CLIENT
AUSBUILD GROUP PTY LTD

SCALE: NTS
DOCUMENT NUMBER
JOB NUMBER AREA STAGE PLAN ISSUE
B4687L A2_DA4_1 RP 01 C

74 REDHEAD STREET, DOOLANDELLA

REHABILITATION NOTES

1.0 BACKGROUND

The rehabilitation plan comprises the plans, details, notes and schedules contained in this document and has been devised based on the *South East Queensland Ecological Restoration Framework*

This rehabilitation plan has been prepared to address requirements outlined in Development Approval (A006305517 and condition 13). The plan is based on the following:

- Approved Concept Rehabilitation Plan (B4321L A1-DA1-LC [C] 12/09/2024)
- Approved Tree Retention Plan (B4321L A1_DA1 TR [E] 12/09/2024)
- Detailed Ecological Assessment Report by S5 Environmental (S523148_DEA_v1.1 26/10/2023)
- Bushfire Hazard Assessment Report by LEC (04/05/2024)

2.0 SITE DESCRIPTION

RP Description	Lot 66 on RP 90234
Address	74 Redhead Street, Doolandella, QLD
Local Authority	Brisbane City Council
Site Area	1.019 ha
Tenure	Freehold
Zoning	Emerging Community

Vegetation **RE 12.5.3, described as Eucalyptus racemosa subsp. racemosa woodland on remnant Tertiary surfaces.**
Eucalyptus racemosa subsp. racemosa woodland with Corymbia intermedia, Eucalyptus siderophloia, Eucalyptus tindaliae, Eucalyptus resinifera, Eucalyptus pilularis, Eucalyptus microcorys, Angophora leiocarpa. Melaleuca quinquenervia is often a prominent feature of lower slopes. Minor patches dominated by Corymbia citriodora subsp. vaiegata sometimes occur.

3.0 MAPPING AND OVERLAYS

QLD - Matters of state environmental significance areas
BCC - Koala habitat area mapping
BCC - High ecological significance mapping
BCC - High ecological significance strategic mapping

4.0 SPECIFICATION

4.1 Rehabilitation Contractor

Works are to be carried out by a suitably qualified and experienced ecological restoration and management contractor. As a minimum, the contractor responsible for implementing and maintaining the works must meet the following requirements:

- Commercial Operator's Licence (ACDC Licence) issued under the *Agricultural Chemicals Distribution Control Act 1966*
- General Safety Induction (Construction Industry) if working on a construction site
- Relevant Ecoaccess permits if required to cultivate, propagate or use protected plants (Department of Environment and Resource Management)
- Demonstrated experience in undertaking rehabilitation works including weed and plant identification
- Accreditation or Membership of *Australian Association of Bush Regenerators*

4.2 Weed Management

In addition to weeds identified in this plan, weed species listed in the *Biosecurity Act 2014*, by Department of Agriculture and Fisheries (DAF) and in local laws and plans are to be eradicated from the site.

Weed management is to be undertaken in accordance with the *SEQ Restoration Framework* and DAF requirements. Timing and techniques for each management zone are addressed under the rehabilitation strategy.

Herbicides must be applied by appropriately qualified or supervised persons in accordance with the *Agricultural Chemicals and Distribution Control Act 1966* at rates identified on registered product labels, or on an *Australian Pesticides Authority* (APVMA) issued off-label permit where applicable. The following requirements will also apply:

- Active constituents must be suitable for weed species.
- Soil and water quality protection measures are to be taken, for example herbicide mixing must be undertaken away from rehabilitation areas and waterways, ecosystem friendly herbicides must be used around waterways and in riparian areas.
- Native and weed species are to be identified prior to weed removal.
- Care should be taken to avoid disturbance to the soil profile.
- Hand removal of weeds around native vegetation prior to spraying to prevent damage.
- All seed heads should be removed and bagged to ensure no further contamination occurs.
- Spraying should not occur when foliage is wet or in wet conditions
- Complete weed fatality must occur prior to planting, mulching or other surface treatments. Planting must not occur when chemical residue may still be active in the soil.

4.3 Preferred Methods for Weed Management

4.3.1 Grasses and Groundcovers

All weed grasses and groundcovers are to be brushcut to a minimum of 10mm and sprayed immediately before the plant cells close and translocation of herbicide ceases. Hand removal is also desirable where feasible. Follow up treatment will be required when regrowth occurs.

4.3.2 Woody Weeds

All woody weeds must be cut stumped to a minimum of 10mm above ground surface and herbicide applied immediately before the plant cells close and translocation of herbicide ceases. Herbicides must be applied at the prescribed rate for cut stump application.

4.3.3 Large Woody Weeds

All large weeds that cannot be cut and stumped must be frilled or stem injected. Herbicides application for frilling must occur immediately before plant cells close and translocation of herbicides ceases.

4.4 Site Mulch & Timber Re-use

Where site mulch is specified, mulch shall be double tub ground from trees and shrubs approved for removal. Stumps and roots contaminated with soil are to be separated prior to tub grinding and shall not be used as site mulch.

On site mulching of weed species must not be done in a manner that mixing may occur with clean site mulch. Keep weed mulch separate so mixing cannot occur.

Site mulch shall be aged in an open stockpile for at least 1 month. Mulch stockpiles shall be turned at least once every 2 weeks.

The reuse of mulch derived from trees such as Camphor laurels that contain above average levels of toxicity must be piled and allowed to stand for a minimum of 3 months.

Stockpiles of site mulch are to be no higher than 2 metres and where practical no higher than 1m in order to maintain the viability of seedstock.

Where imported mulch is specified or additional mulch is required, mulch shall be 'A' Grade Forest Mulch free of rubbish and other contaminants.

Place mulch to a settling depth of 100mm where directed.

4.5 Planting

All plants are to be supplied as 75mm tubestock unless noted otherwise.

Plants are to be sun-hardened and free of pests and disease.

Species and planting densities are in accordance with the revegetation schedule.

Install plants in accordance with planting details and schedule of works.

Ensure plants are installed upright, particularly on slopes.

Incorporate wetting agent (such as Rainsaver or equivalent) and slow release fertiliser (Agriform 10g tablet, Osmocote for Natives or similar) into the soil at manufacturer's recommended rates.

Plants to be installed immediately following delivery to site.

Water each plant thoroughly within an hour of planting.

On slopes steeper than 1:4 jute mat is to be used in lieu of organic mulch in accordance with planting details and schedule of works.

4.6 Fauna Habitat

Habitat features including hollows, nests, termitarium and native bee hives are identified on the plans. Dead trees, fallen trees, ground logs, leaf litter and rocks are to be retained as habitat features.

Current regulated vegetation mapping indicates that the subject site is mapped as Category X mapped vegetation. The western and southern boundaries contain mapped Endangered Remnant Vegetation Regional Ecosystem (RE) 12.5.3 and Essential Habitat for the koala, powerful owl and central greater glider. Current State Koala habitat mapping shows small amounts of core koala habitat area (KHA) along the western and southern boundaries. The subject site does not contain Protected Plants mapping.

- Provide nesting boxes as follows: Nest boxes to be installed by a suitably qualified professional.
- 2 no. Parrot boxes
- 2 no. Possum boxes

GPS locations to be recorded and submitted to Council as part of the implementation certification.

4.7 Fencing

- Fencing to be provided in accordance with the details, schedule of works and to the locations and extents shown on the plans.

5.0 REHABILITATION STRATEGY

5.1 Overview

The rehabilitation area has been treated as a whole management zone with corresponding primary, follow-up and maintenance activities. Treatments have been determined in accordance with resilience ie. capacity to regenerate based on extent of intact native vegetation cover; and the type and extent of degradation present including weeds, erosion, uncontrolled filled and the like. Detail as follows.

5.2 Rehabilitation Area A (RHA-A) 2,454m2

5.2.1 Description

The rehabilitation area was ground-truthed to reflect the remant regional ecosystem RE 12.5.3a. Eucalyptus racemosa subsp. Racemosa woodland on remnant Tertiary surface. Mixed woodland to open forest contains Corymbia intermedia, Eucalyptus racemosa subsp, Eucalyptus seena. Other species

include Angophora leiocarpa, Eucalyptus siderophloia, Eucalyptus microcorys, Corymbia citriodora subsp. variegata and Lophostemon suaveolens.

5.2.2 Action

Proposed action for RHA- is

- Reconstruction to existing bare areas and assisted natural regeneration (weed removal allowing for native regrowth from seedbank). Requires primary and follow-up weed treatment, planting, mulching and monitoring.
- Soil - planting into existing.
- Mulch - in areas where there is no existing native canopy.
- Plants - species, stock size, densities, refer schedule and modules

5.3 Maintenance and Monitoring

Maintenance to be undertaken following primary rehabilitation activities. The following maintenance periods apply: 24 month. Maintenance period does not begin until implementation certification is provided to Council's satisfaction.

5.3.1 Maintenance Period

Activities

Contractor to undertake the following activities:

- Although it preferred that plants survive on natural rainfall during the maintenance period, supplementary watering may be required to ensure plant survival during excessively dry and/or hot periods. If watering is required, Contractor to notify the Superintendent at once. Plant deaths due to lack of water will be replaced at Contractor's expense.
- Pest and disease control including weeding, application of herbicide and pesticides as required.
- Maintaining mulch levels and coverage.
- Maintaining jute mat to ensure in place and secure
- Maintaining any stakes and guards to ensure in place and secure.
- Maintaining any fencing to ensure in place and secure.
- Replacing any dead of non-performing plants.
- Removal of stakes and guards prior to final certification
- Generally keeping the site clean, tidy and free of litter.
- Replacement of any damaged nest boxes.

5.4 Performance Criteria

5.4.1 Implementation certification

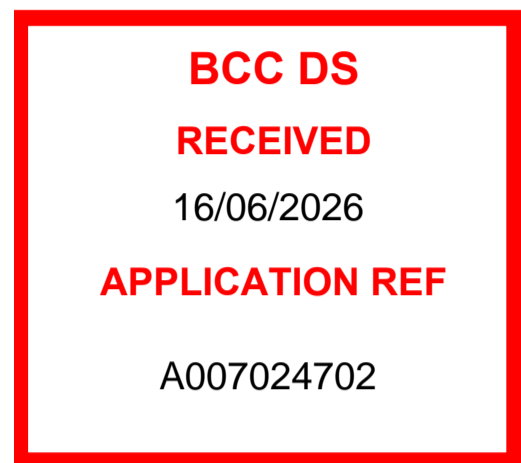
The 24-month maintenance period begins upon the implementation certification demonstrating the following:

- Planting densities and species diversity as outlined on Sheet B4687L A2_DA4_RP 01 B achieved
- 100% removal of all weeds of Natural Significance (WoNS)
- 90% removal of all other environmental weeds
- Removal of rubbish and deleterious materials
- All required fencing and access gates installed
- Nest boxes installed
- Mulch, jute matting/ netting, tree guards installed
- Maintenance access secured

5.4.2 Final certification

The 24-month maintenance period finishes upon the final certification demonstrating the following:

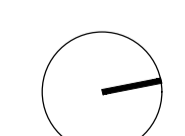
- Planting densities to achieve 95% of densities specified outlined on Sheet B4687L A2_DA4_1 RP 01 B
- Planting diversity achieves 95@ diversity outlined on Sheet B4687L A2_DA4_1 RP 01 B
- 100% removal of all WoNS
- 95% removal of all other environmental weeds
- No evidence of rubbish or deleterious materials
- Fencing and access gates remain in place and are functional
- Nest boxes remain in place and are functional
- Tree guards removed
- Maintenance access remains secured.



C	OPW MINOR CHANGE	2026-06-12	GS	HQ	HQ
B	FOR APPROVAL	2026-03-02	HQ	HQ	DM
A	FOR APPROVAL	2025-12-09	GS	HQ	DM
ISSUE	DETAILS	DATE	DES	DC	QA

PROJECT TITLE
RESIDENTIAL SUBDIVISION
74 REDHEAD STREET,
DOOLANDELLA,
QLD 4077

CLIENT
AUSBUILD GROUP PTY LTD

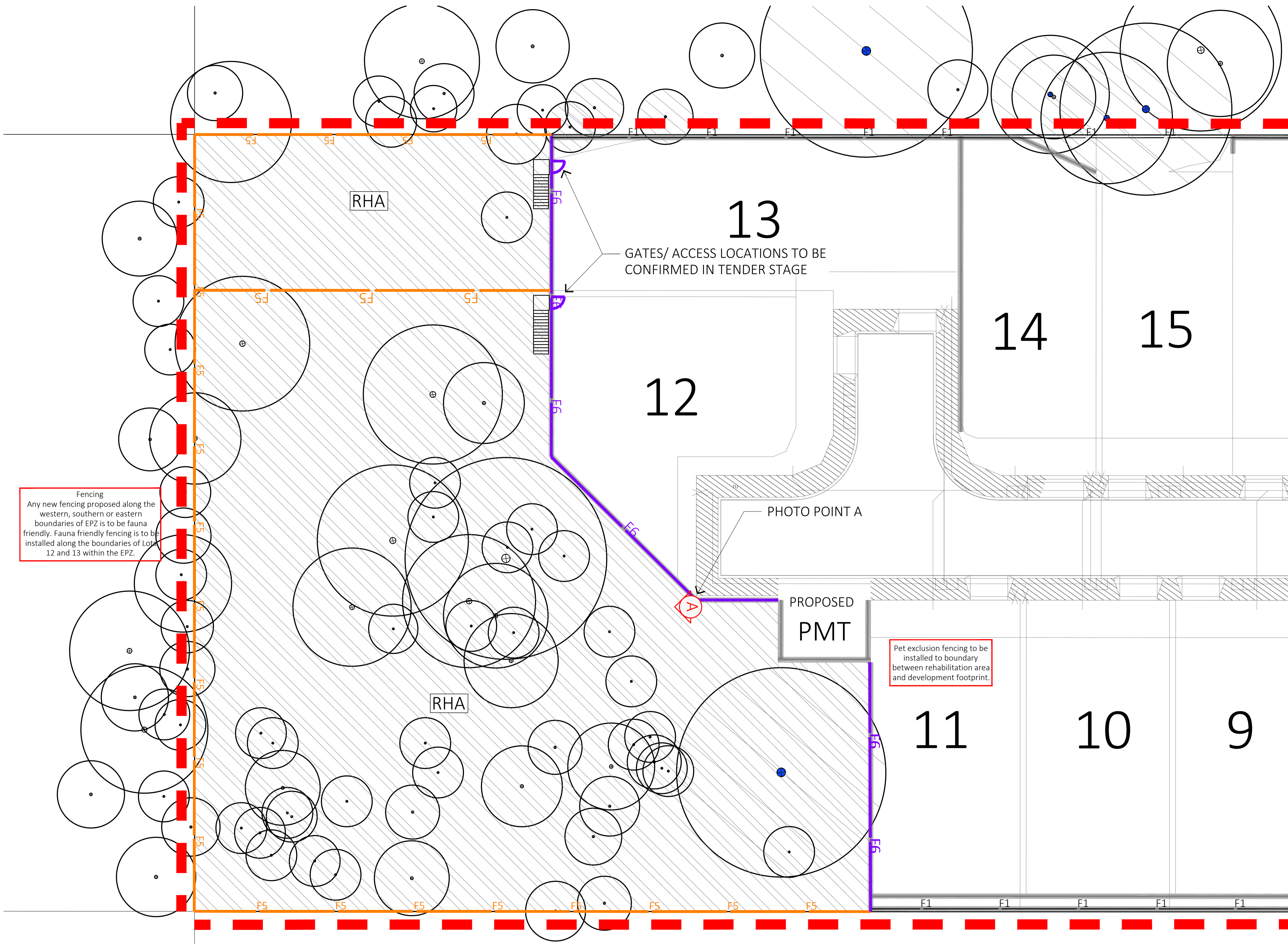


- LEGEND**
- TREES TO BE RETAINED & PROTECTED
Refer Vegetation Management Plan
 - REHABILITATION AREA A Planting
Refer Rehabilitation Schedule
 - F5 - FAUNA FRIENDLY
REFER TO SCHEDULE & DETAILS
 - F6 - PET EXCLUSION
REFER TO SCHEDULE & DETAILS
 - EXTENT OF WORKS
 - CIVIL RETAINING WALL
REFER CIVIL PLANS

BCC DS
RECEIVED
 16/06/2026
APPLICATION REF
 A007024702

Fencing
 Any new fencing proposed along the western, southern or eastern boundaries of EPZ is to be fauna friendly. Fauna friendly fencing is to be installed along the boundaries of Lots 12 and 13 within the EPZ.

Pet exclusion fencing to be installed to boundary between rehabilitation area and development footprint.



C	OPW MINOR CHANGE	2026-06-12	QS	HQ	HQ
B	FOR APPROVAL	2026-03-02	HQ	HQ	DM
A	FOR APPROVAL	2025-12-09	QS	HQ	DM
ISSUE	DETAILS	DATE	DES	DC	QA

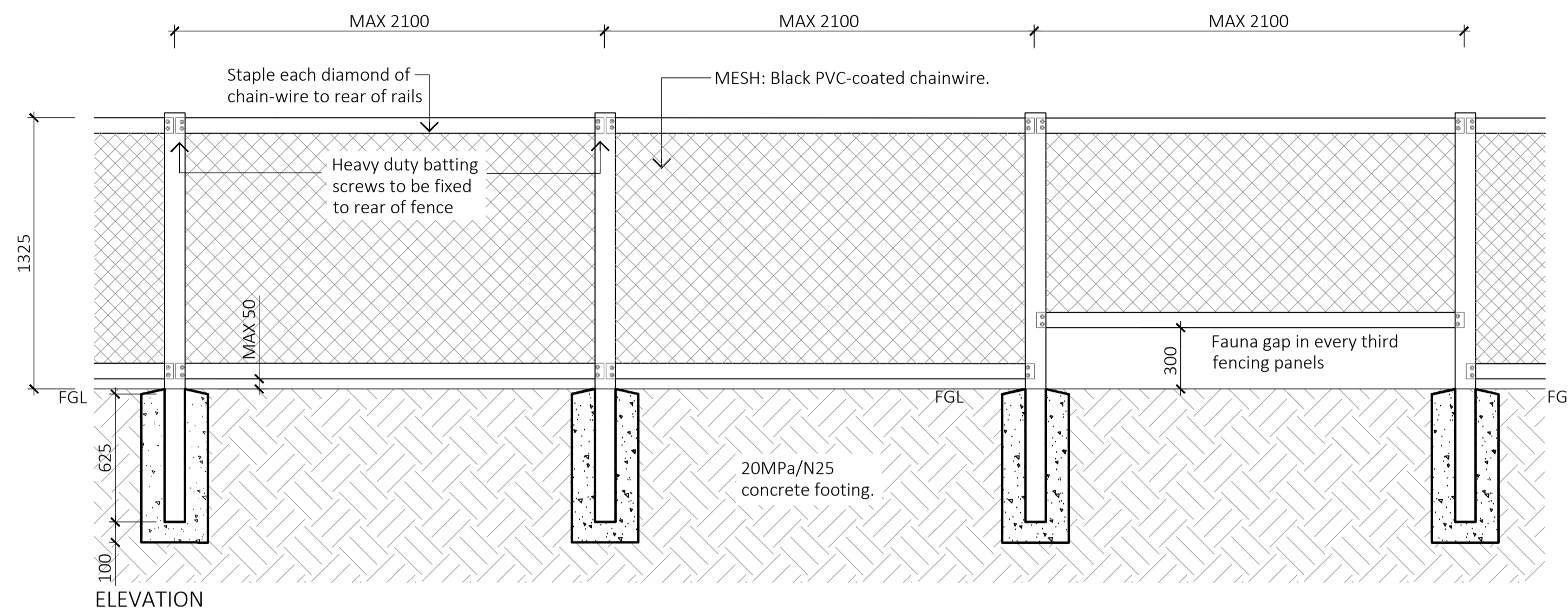
PROJECT TITLE
 RESIDENTIAL SUBDIVISION
 74 REDHEAD STREET,
 DOOLANDELLA,
 QLD 4077

CLIENT
 AUSBUILD GROUP PTY LTD

PLAN TITLE
 REHABILITATION PLAN

Project arborist to supervise the installation of footings. Locations of these footings may require adjusting to preserve the root systems of surrounding native vegetation.

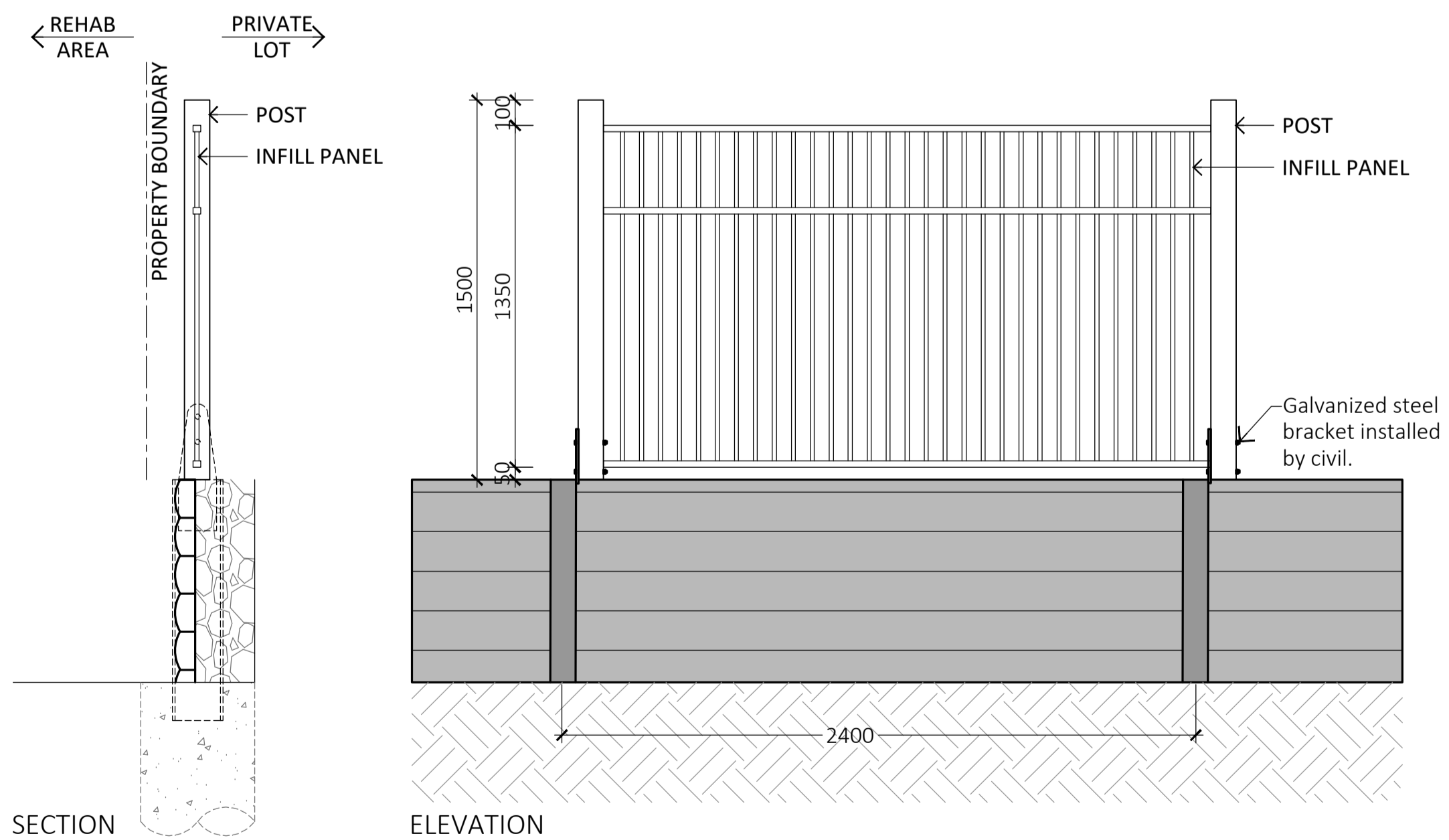
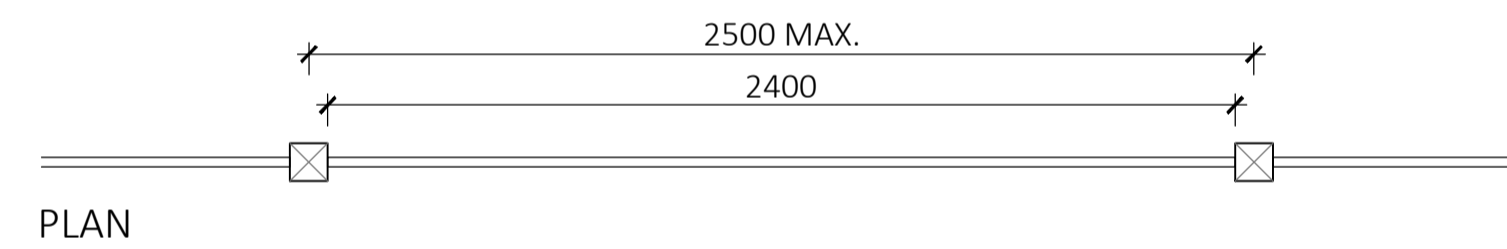
- NOTES:
1. POSTS: H3 durability class 1 HWD timber posts
 2. RAIL: H3 treated SWD timber rails.
 3. RAIL FIXING: Heavy duty batting screws to be fixed to rear of fence
 4. FINISHES: No coatings.
 5. MESH: Chainmesh Black PVC 1200x60x2.5mmx15m



DETAIL SPECIFICATION

POST SIZE:	POST TYPE:
200x200 <input type="checkbox"/>	HWD H3 <input checked="" type="checkbox"/>
200x100 <input type="checkbox"/>	SWD H3 <input type="checkbox"/>
150x150 <input type="checkbox"/>	
125x125 <input type="checkbox"/>	
100x100 <input checked="" type="checkbox"/>	
100x75 <input type="checkbox"/>	
RAIL SIZE:	RAIL TYPE:
150x50 <input type="checkbox"/>	HWD H3 <input type="checkbox"/>
100x50 <input type="checkbox"/>	SWD H3 <input checked="" type="checkbox"/>
100x38 <input type="checkbox"/>	
75x38 <input checked="" type="checkbox"/>	
Midrail: <input type="checkbox"/>	
FINISHES:	
Rough sawn <input checked="" type="checkbox"/>	
Dressed <input type="checkbox"/>	
Stained- 3 coats <input type="checkbox"/>	
MESH:	
Chainmesh Black PVC 1200x60x2.5mmx15m <input checked="" type="checkbox"/>	

01 F5 - TIMBER & CHAIN MESH FENCE WITH FAUNA GAP
RP04 1:20



- NOTES:
1. POSTS: H3 durability class 1 HWD timber posts
 2. POST FIXING: 2 x Galvanized Steel Bolt
 3. INFILL PANELS: 1500 x 2400 black PWD aluminium pool style fence
 4. PANEL FIXING: Panel to post to use anti theft screws.

DETAIL SPECIFICATION

FENCE HEIGHT:	FINISHES
2000mm <input type="checkbox"/>	Rough sawn <input checked="" type="checkbox"/>
1800mm <input type="checkbox"/>	Dressed <input type="checkbox"/>
1500mm <input checked="" type="checkbox"/>	
1200mm <input type="checkbox"/>	
POST SIZE:	TIMBER TYPE:
150x150 <input type="checkbox"/>	HWD H3 <input checked="" type="checkbox"/>
125x125 <input type="checkbox"/>	SWD H3 <input type="checkbox"/>
100x100 <input checked="" type="checkbox"/>	
100x75 <input type="checkbox"/>	

02 F6 - PET EXCLUSION FENCE (POOL STYLE)
RP04 1:20

D	OPW MINOR CHANGE	2026-06-12	QS	HQ	HQ
C	OPW APPROVAL UPDATE	2026-03-27	HQ	HQ	DM
B	FOR APPROVAL	2026-03-02	HQ	HQ	DM
A	FOR APPROVAL	2025-12-09	QS	HQ	DM
ISSUE	DETAILS	DATE	DES	DC	QA

PROJECT TITLE
RESIDENTIAL SUBDIVISION
74 REDHEAD STREET,
DOOLANDELLA,
QLD 4077

CLIENT
AUSBUILD GROUP PTY LTD

PLAN TITLE
REHABILITATION
FENCE DETAILS