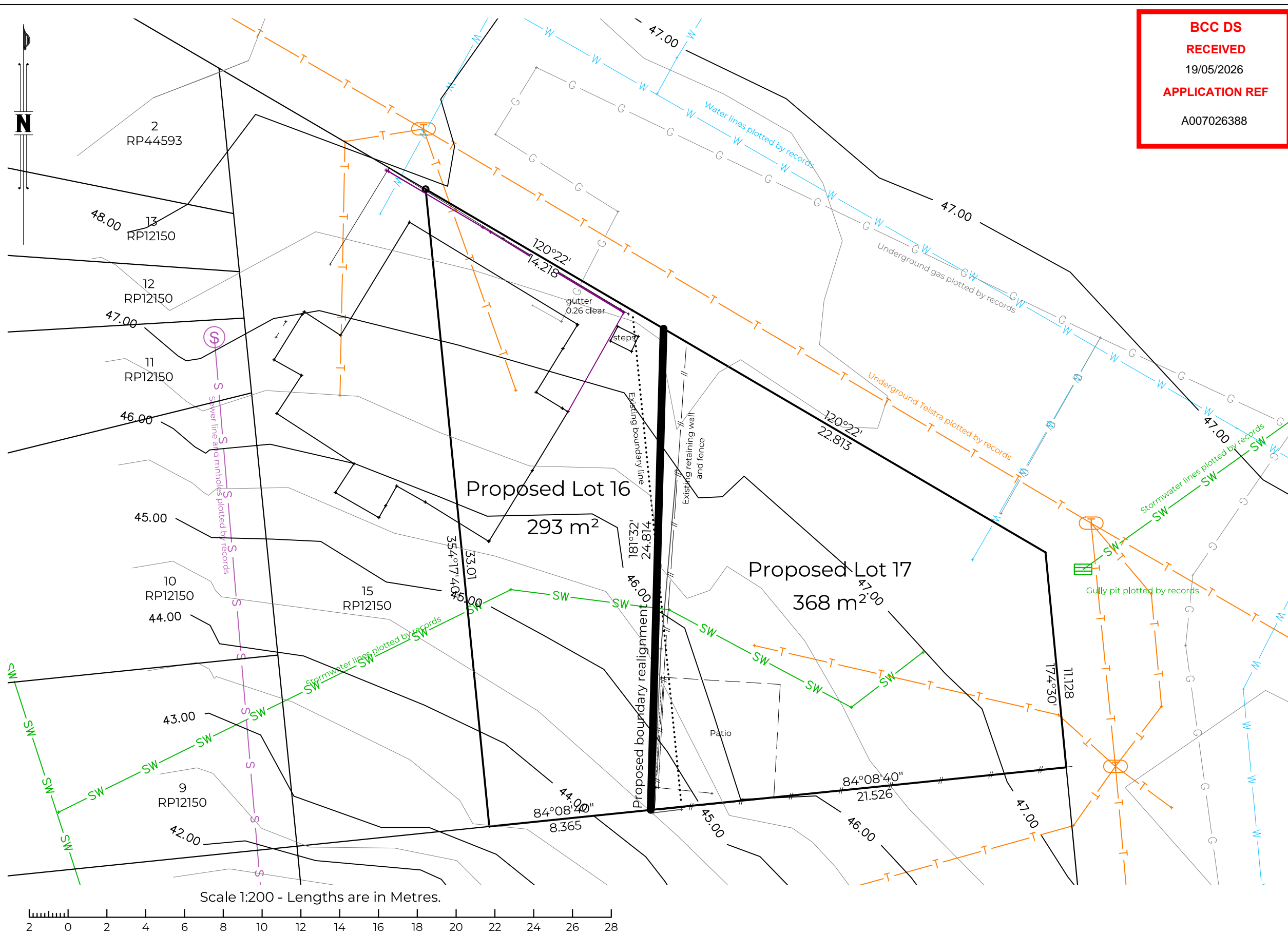
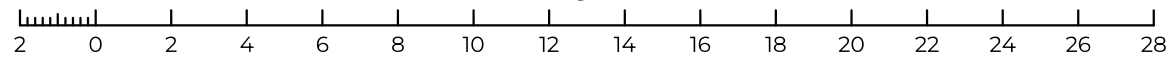


**BCC DS
RECEIVED**
19/05/2026
APPLICATION REF
A007026388

- LEGEND**
- UE ——— Underground Electricity
 - W ——— Overhead Electricity
 - ⊕ Electrical Marker
 - ⊕ Electrical Pillar/Green Boy
 - ⊕ Electrical Pit
 - ⊕ Lamp Post
 - ⊕ Light Pole
 - ⊕ Power Pole
 - G ——— Gas Line
 - ⊕ Gas Marker
 - ⊕ Gas Meter
 - ⊕ Gas Valve
 - S ——— Sewer Line
 - ⊕ Sewer Manhole
 - ⊕ Septic
 - ⊕ Inspection Opening
 - SW ——— Stormwater Line
 - ⊕ Drain
 - ⊕ Stormwater Manhole
 - ⊕ Stormwater Gully Pit
 - ⊕ Roofwater Field Inlet
 - ⊕ Stormwater Kerb Adaptor
 - ⊕ Stormwater Downpipe
 - T ——— Telecommunications Line
 - ⊕ Telecommunications Pit
 - ⊕ Telecommunications Marker
 - ⊕ Telecommunications Pillar
 - ⊕ NBN Pit
 - NBN ——— NBN Line
 - W ——— Water Line
 - ⊕ Fire Hydrant
 - ⊕ Water Valve
 - ⊕ Water Meter
 - ⊕ Water Marker
 - ⊕ Water Tap
 - ⊕ Hot Water System
 - Edge of Vegetation
 - ⊕ Tree
 - ⊕ Palm
 - ⊕ Shrub
 - ⊕ Stump
 - Edge Garden
 - Bank
 - Change of Grade
 - Road Centreline
 - Edge of Road
 - Track
 - Back of Kerb
 - Kerb Invert
 - Fence
 - Retaining Wall
 - Building
 - Eave
 - Gutter
 - Awning
 - Swimming Pool
 - Edge of Paving
 - ⊕ Post
 - ⊕ Sign
 - ⊕ Bench Mark
 - ⊕ Gate
 - ⊕ Clothesline
 - Minor Contour
 - Major Contour



Scale 1:200 - Lengths are in Metres.



Contours by BCC 2002 contours
Contour Interval: 0.5m



Point 2 Point Surveys Pty Ltd

Notes:
This plan has been prepared by Point 2 Point Surveys Pty Ltd for the purpose of proposal plan for development application. It is not to be used for any other purpose. Contours are by field survey.

Number of New Lots
2
Number of New Easements
0
New Road
0

PO Box 3088, Birkdale, QLD, 4159
0427 907 044
mandy@point2pointsurveys.com
www.point2pointsurveys.com

Address
1 & 7 Gertrude Street
Suburb
Highgate Hill
Local Government
BRISBANE CITY

Proposal Plan
Proposed Lots 16 & 17

Lot 16 & 17 on RP12150

Client
Neil Sullivan

Scale	Drawn	Checked	Date	Job #	Drawing No.	Issue	Sheet
1:200 @ A3	AJF	AJF	01/05/2024	1231	1231 PP B	B	1 of 1