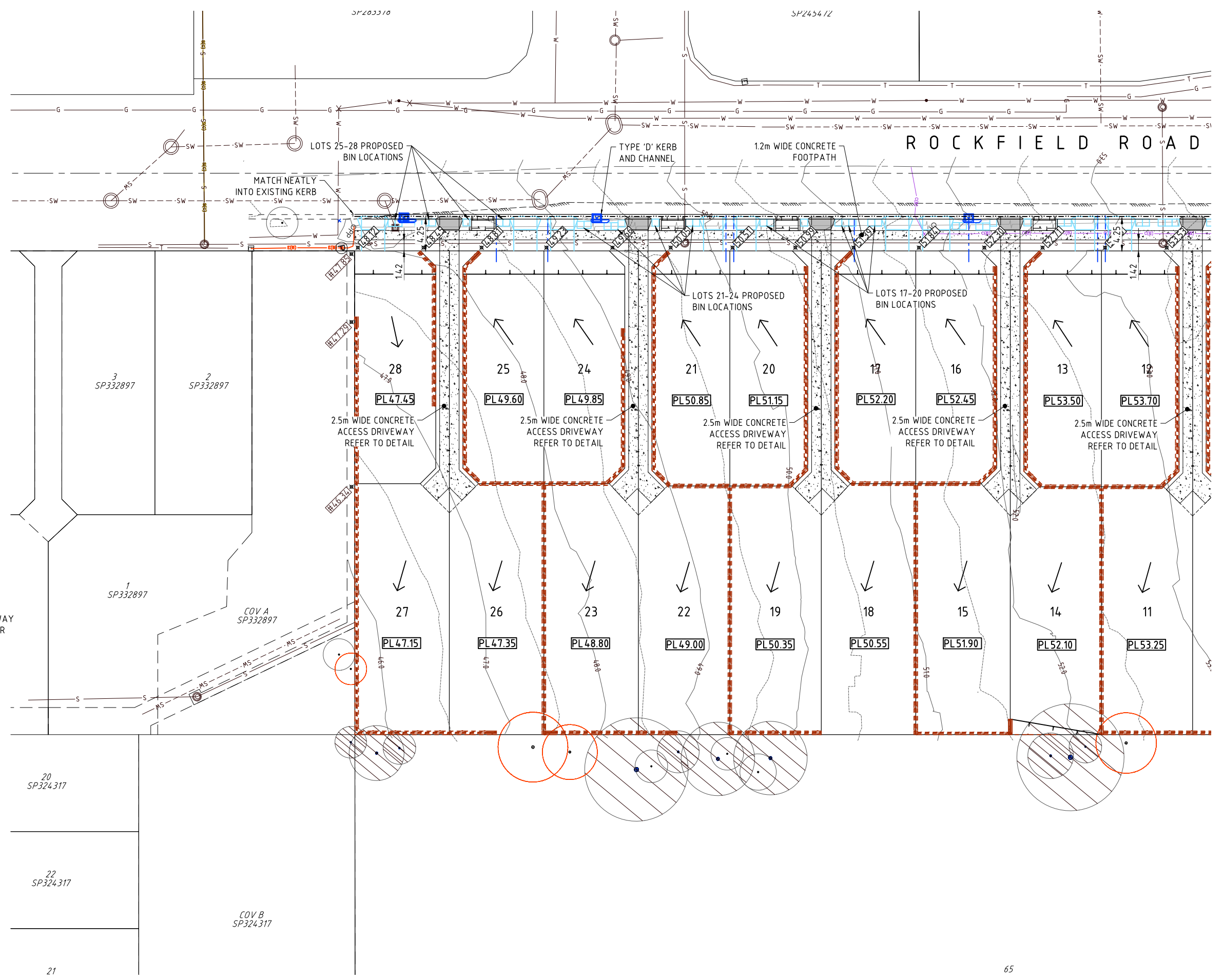
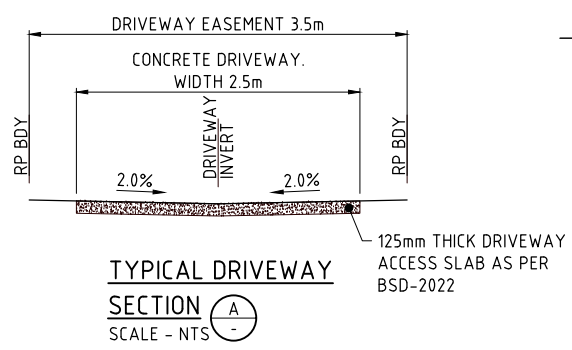


- LEGEND:**
- EXISTING CONTOURS
 - EXISTING KERB & CHANNEL
 - EXISTING EDGE OF BITUMEN
 - PROPOSED KERB & CHANNEL
 - PROPOSED RETAINING WALL
 - INDICATIVE DRIVEWAY
 - INDICATIVE BIN LOCATIONS

- TREE LEGEND**
- TREES PROPOSED TO BE RETAINED AND PROTECTED.
 - TREES PROPOSED TO BE RETAINED AND REQUIRE ARBORIST (AQF5) DIRECTION & SUPERVISION FOR TPZ WORKS.

TREE PROTECTION ZONE (TPZ)
TPZ to be protected in accordance with Protection of Trees on Development Sites (AS4970-2009) guidelines & any approval conditions.



BCC DS
RECEIVED
25/03/2026
APPLICATION REF
A006928472

BRISBANE - SUNSHINE COAST - CENTRAL QLD

JFOP

BRISBANE
JFP House - 76 Ernest Street,
South Brisbane Qld 4101
P 07 3012 0100 W www.jfp.com.au

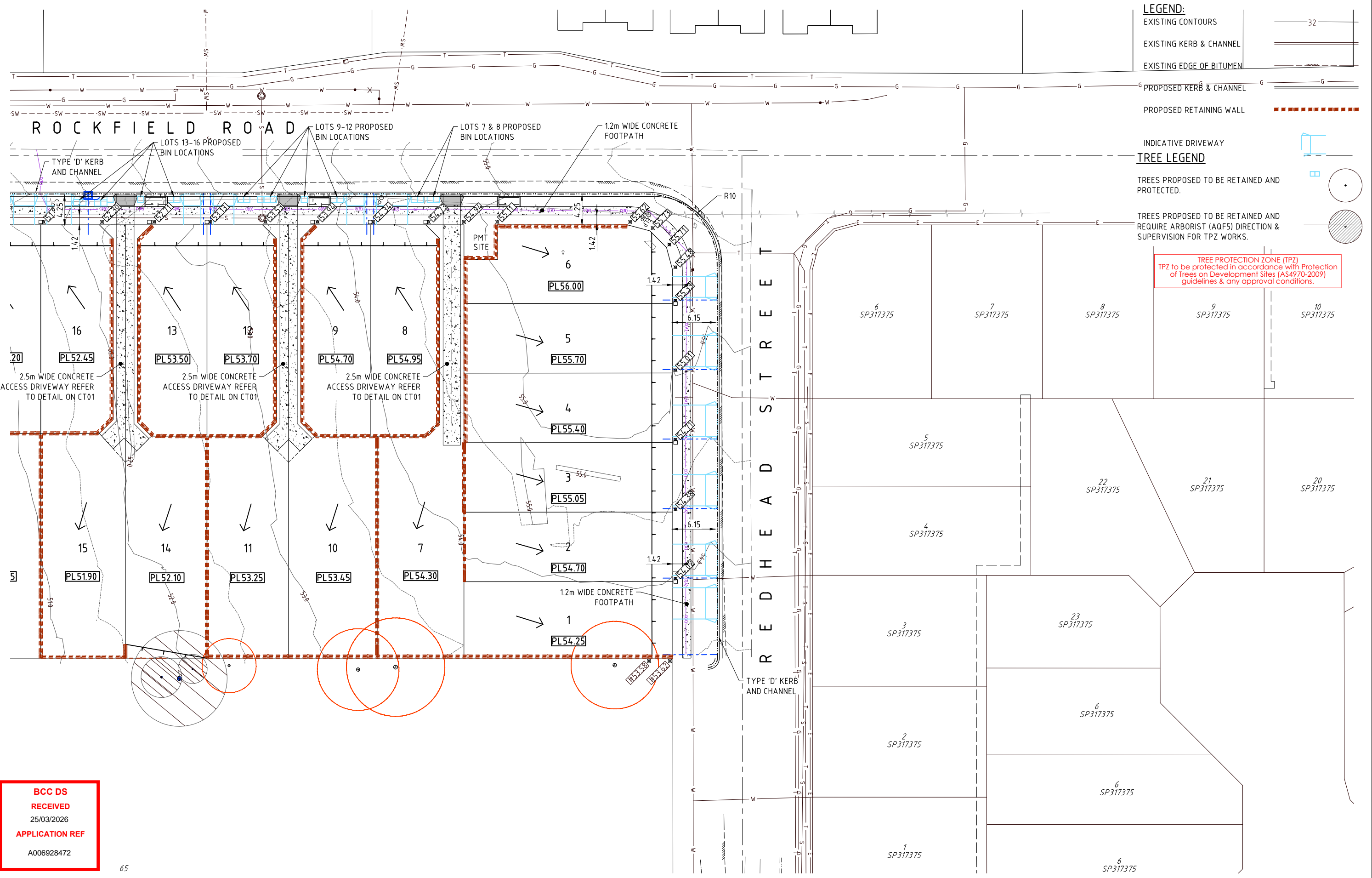
PLANNERS
URBAN DESIGNERS
SURVEYORS
ENGINEERS
LANDSCAPE ARCHITECTS

ENGINEERING CONCEPT - FUNCTIONAL TRAFFIC LAYOUT

**92 REDHEAD STREET, DOOLANDELLA
AUSBUILD GROUP PTY LTD**

JOB NO:	PLAN:	ISSUE:
B4687EA2_DA6	CT01	B
SCALE:	1:250 @ A1	
DATE:	03/03/2026	
DRAFTED BY:	PGM	
FILE NAME:	B4687EA2_DA6.DWG	

T:\03\2026\N\14687\A1\DESIGN\WORKING DRAWINGS\B4687EA2.DWG



BCC DS
RECEIVED
 25/03/2026
APPLICATION REF
 A006928472

65

JFOP
 URBAN CONSULTANTS

BRISBANE - SUNSHINE COAST - CENTRAL QLD
 BRISBANE
 JFP House - 76 Ernest Street,
 South Brisbane Qld 4101
 P 07 3012 0100 W www.jfp.com.au

PLANNERS
 URBAN DESIGNERS
 SURVEYORS
 ENGINEERS
 LANDSCAPE ARCHITECTS

JFP URBAN CONSULTANTS PTY. LTD. A.C.N. 050 414 045
 COPYRIGHT © 2011 JFP URBAN CONSULTANTS PTY LTD. THIS DOCUMENT MAY NOT BE COPIED OR TRANSMITTED IN ANY FORM OR BY ANY MEANS IN PART OR IN WHOLE WITHOUT THE WRITTEN CONSENT OF JFP URBAN CONSULTANTS PTY LTD.

ENGINEERING CONCEPT - FUNCTIONAL TRAFFIC LAYOUT

92 REDHEAD STREET, DOOLANDELLA
AUSBUILD GROUP PTY LTD

JOB NO: **B4687EA2_DA6** PLAN: **CT02** ISSUE: **B**

SCALE: 1:250 @ A1
 DATE: 03/03/2026
 DRAFTED BY: PGM
 FILE NAME: B4687EA2_DA6.DWG

1:100/2026 N:\14687\A1\DESIGN\WORKING DRAWINGS\B4687EA2.DWG

LEGEND:

- EXISTING CONTOURS ——— 32 ———
- FINISHED CONTOURS ——— 32 ———
- PRELIMINARY PAD LEVEL (PL) PL40.65
- SPOT LEVELS 19.62
- #19.62 DENOTES NATURAL SURFACE LEVEL
- PRELIMINARY FILLING
- PRELIMINARY EXCAVATION
- PRELIMINARY RETAINING WALL
- EXISTING/FUTURE RETAINING WALL

NOTES:

1. BATTERS BETWEEN ALLOTMENTS TO BE 1 IN 2 MAXIMUM.
2. PAD AND EARTHWORKS LEVELS ARE PRELIMINARY ONLY AND ARE SUBJECT TO DETAILED ENGINEERING DESIGN.
3. RETAINING WALL HEIGHTS ARE INDICATIVE ONLY AND ARE SUBJECT TO DETAIL ENGINEERING DESIGN.
4. PLEASE REFER TO THE TREE RETENTION PLAN (TRP) FOR DETAILS OF TREE RETENTION &/OR REMOVAL.

TREE LEGEND

TREES PROPOSED TO BE RETAINED AND PROTECTED.

TREES PROPOSED TO BE RETAINED AND REQUIRE ARBORIST (AQF5) DIRECTION & SUPERVISION FOR TPZ WORKS.

TREE PROTECTION ZONE (TPZ)
 TPZ to be protected in accordance with Protection of Trees on Development Sites (AS4970:2009) guidelines & any approval conditions.



BCC DS
 RECEIVED
 25/03/2026
 APPLICATION REF
 A006928472

JFOP
 URBAN CONSULTANTS
 BRISBANE - SUNSHINE COAST - CENTRAL QLD
 BRISBANE
 JFP House - 76 Ernest Street,
 South Brisbane Qld 4101
 P 07 3012 0100 W www.jfp.com.au
 JFP URBAN CONSULTANTS PTY. LTD. A.C.N. 050 414 045

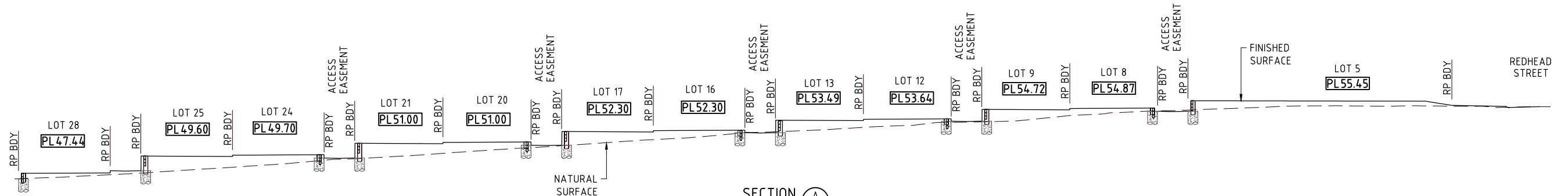
- PLANNERS
- URBAN DESIGNERS
- SURVEYORS
- ENGINEERS
- LANDSCAPE ARCHITECTS

ENGINEERING CONCEPT - EARTHWORKS LAYOUT PLAN

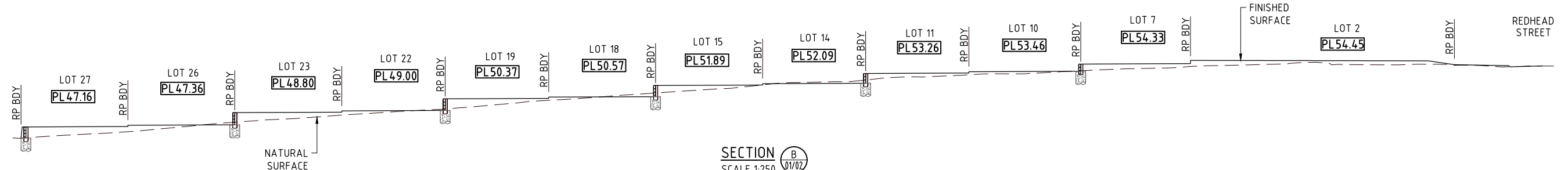
92 REDHEAD STREET, DOOLANDELLA
 AUSBUILD GROUP PTY LTD

JOB NO:	PLAN:	ISSUE:
B4687EA2_DA6	CE01	B
SCALE:	1:250 @ A1	
DATE:	03/03/2026	
DRAFTED BY:	PGM	
FILE NAME:	B4687EA2_DA6.DWG	

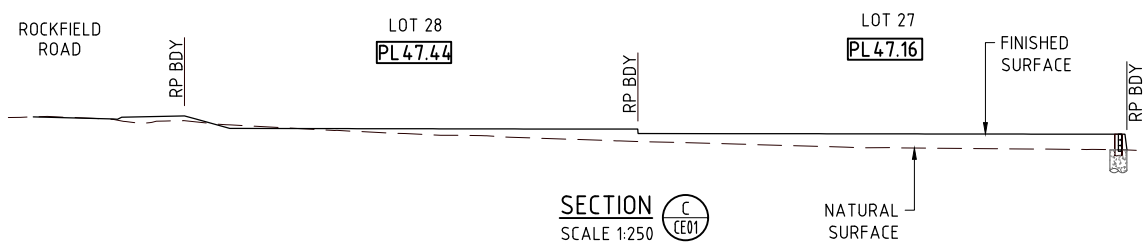
1:003/2026 N:\14687\A\DWG\DESIGN\WORKING DRAWINGS\B4687EA2.DWG



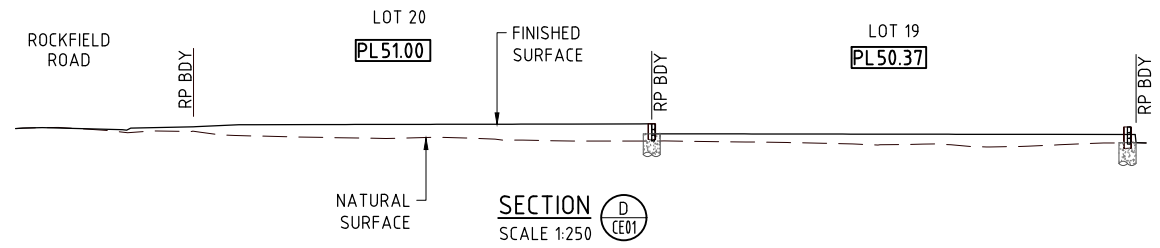
SECTION A
SCALE 1:250
01/02



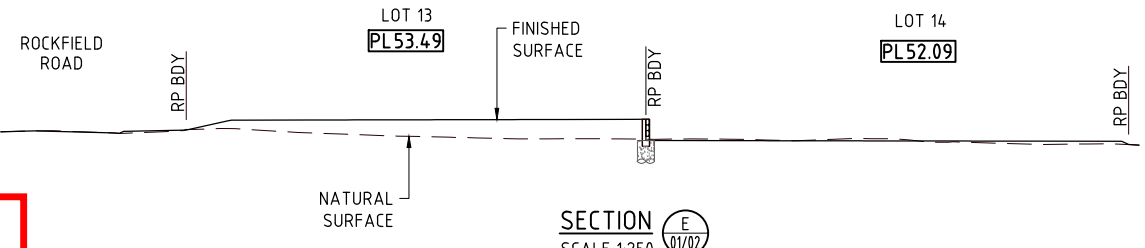
SECTION B
SCALE 1:250
01/02



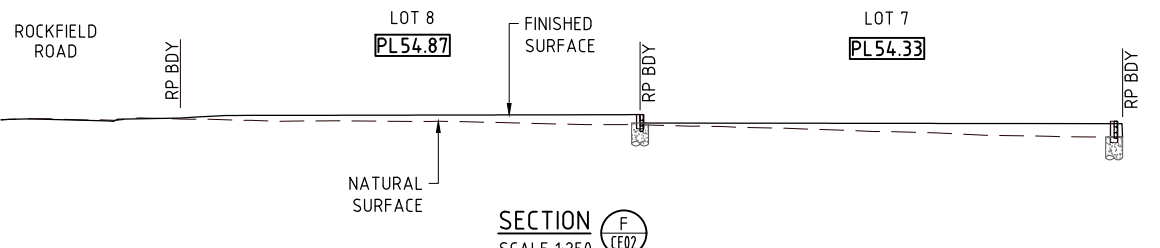
SECTION C
SCALE 1:250
CE01



SECTION D
SCALE 1:250
CE01



SECTION E
SCALE 1:250
01/02



SECTION F
SCALE 1:250
CE02

BCC DS
RECEIVED
25/03/2026
APPLICATION REF
A006928472

JFOP
BRISBANE - SUNSHINE COAST - CENTRAL QLD
BRISBANE
JFP House - 76 Ernest Street,
South Brisbane Qld 4101
P 07 3012 0100 W www.jfp.com.au

PLANNERS
URBAN DESIGNERS
SURVEYORS
ENGINEERS
LANDSCAPE ARCHITECTS

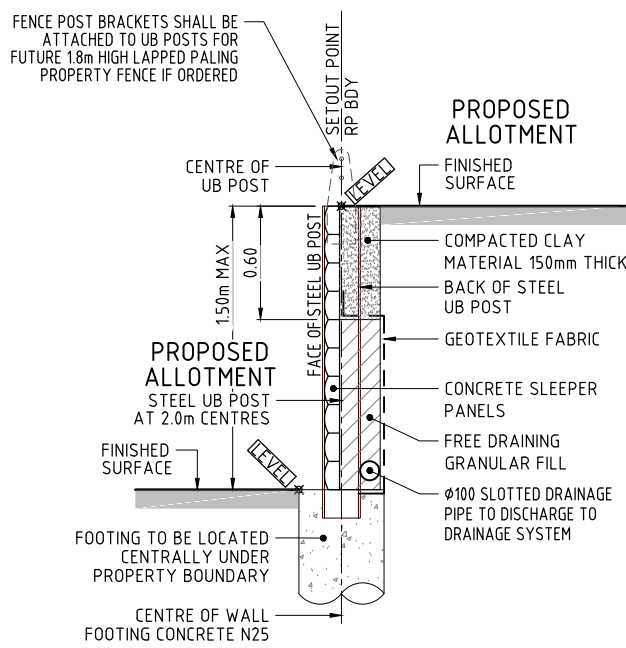
URBAN CONSULTANTS
JFP URBAN CONSULTANTS PTY. LTD. A.C.N. 050 414 045
COPYRIGHT © 2011 JFP URBAN CONSULTANTS PTY LTD. THIS DOCUMENT MAY NOT BE COPIED OR TRANSMITTED IN ANY FORM OR BY ANY MEANS IN PART OR IN WHOLE WITHOUT THE WRITTEN CONSENT OF JFP URBAN CONSULTANTS PTY LTD.

ENGINEERING CONCEPT - EARTHWORKS DETAILS PLAN

92 REDHEAD STREET, DOOLANDELLA
AUSBUILD GROUP PTY LTD

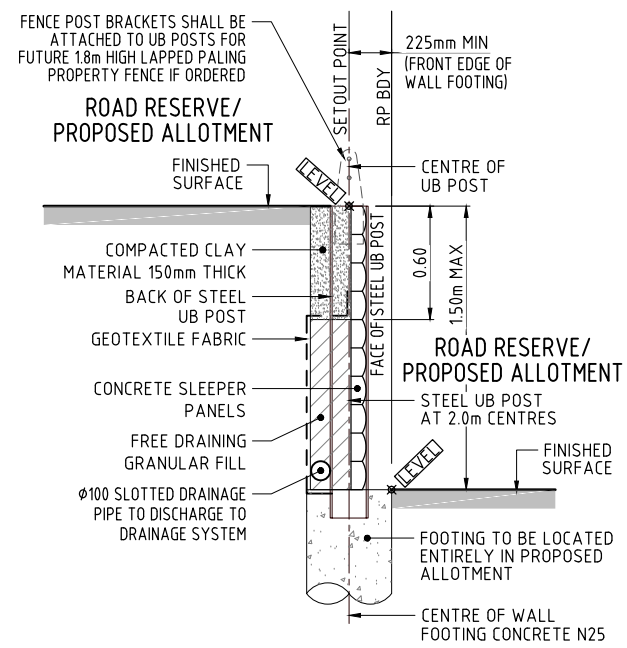
JOB NO:	PLAN:	ISSUE:
B4687EA2_DA6	CE03	B
SCALE:	1:250 @ A1	
DATE:	03/03/2026	
DRAFTED BY:	PGM	
FILE NAME:	B4687EA2_DA6.DWG	

I:\03\2026\14687EA2\DESIGN\WORKING DRAWINGS\B4687EA2.DWG



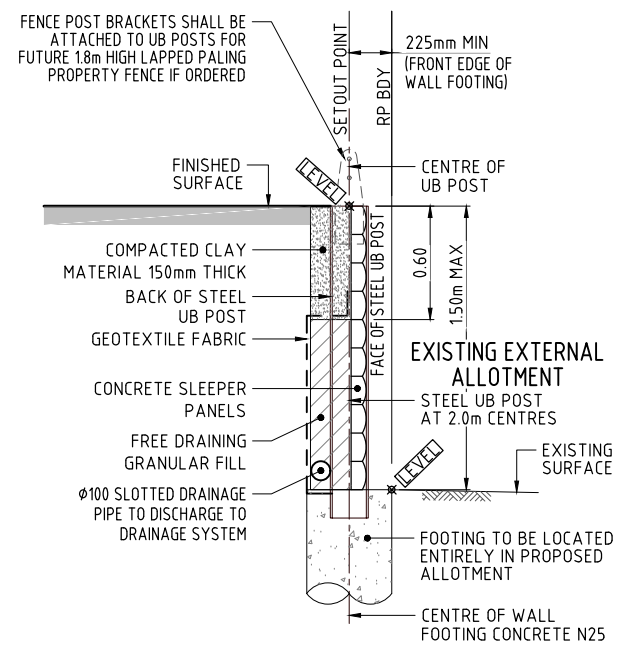
TYPICAL SECTION - TYPE A1
CONCRETE SLEEPER/UB POST RETAINING WALL
 SCALE 1:20

NOTE: RETAINING WALL DESIGN (INCLUDING FENCE POST BRACKETS AND FITTINGS) AND CONSTRUCTION CERTIFICATION TO INCORPORATE LOADING FROM FUTURE 1.8m HIGH LAPPED PALING PROPERTY FENCE



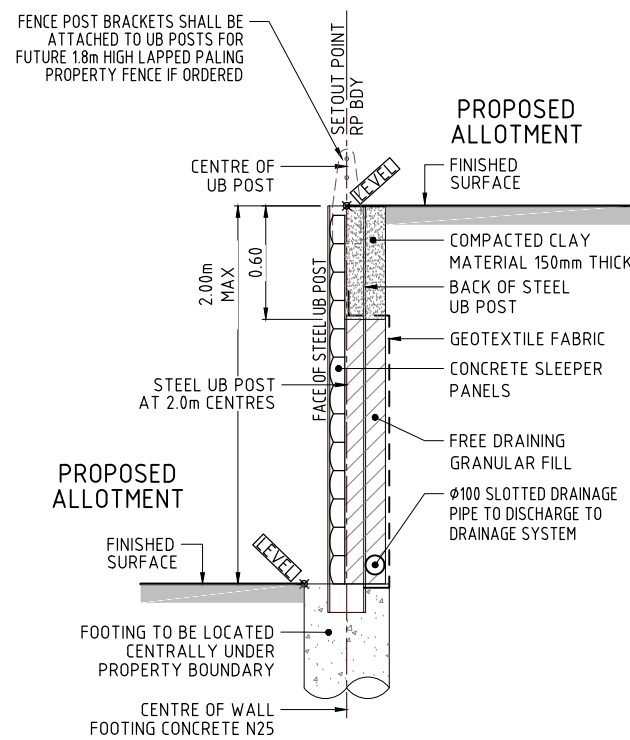
TYPICAL SECTION - TYPE A3
CONCRETE SLEEPER/UB POST RETAINING WALL
 SCALE 1:20

NOTE: RETAINING WALL DESIGN (INCLUDING FENCE POST BRACKETS AND FITTINGS) AND CONSTRUCTION CERTIFICATION TO INCORPORATE LOADING FROM FUTURE 1.8m HIGH LAPPED PALING PROPERTY FENCE



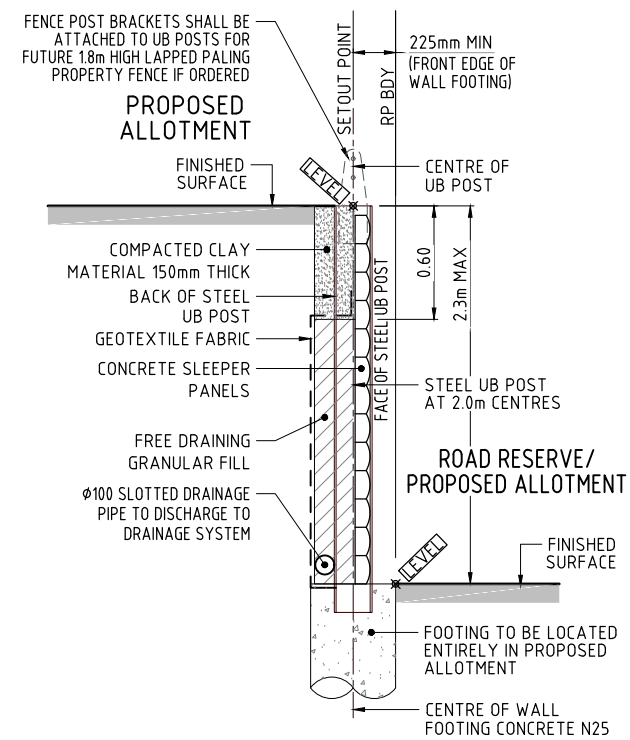
TYPICAL SECTION - TYPE A5
CONCRETE SLEEPER/UB POST RETAINING WALL
 SCALE 1:20

NOTE: RETAINING WALL DESIGN (INCLUDING FENCE POST BRACKETS AND FITTINGS) AND CONSTRUCTION CERTIFICATION TO INCORPORATE LOADING FROM FUTURE 1.8m HIGH LAPPED PALING PROPERTY FENCE



TYPICAL SECTION - TYPE B1
CONCRETE SLEEPER/UB POST RETAINING WALL
 SCALE 1:20

NOTE: RETAINING WALL DESIGN (INCLUDING FENCE POST BRACKETS AND FITTINGS) AND CONSTRUCTION CERTIFICATION TO INCORPORATE LOADING FROM FUTURE 1.8m HIGH LAPPED PALING PROPERTY FENCE



TYPICAL SECTION - TYPE B3
CONCRETE SLEEPER/UB POST RETAINING WALL
 SCALE 1:20

NOTE: RETAINING WALL DESIGN (INCLUDING FENCE POST BRACKETS AND FITTINGS) AND CONSTRUCTION CERTIFICATION TO INCORPORATE LOADING FROM FUTURE 1.8m HIGH LAPPED PALING PROPERTY FENCE

BCC DS
RECEIVED
 25/03/2026
APPLICATION REF
 A006928472



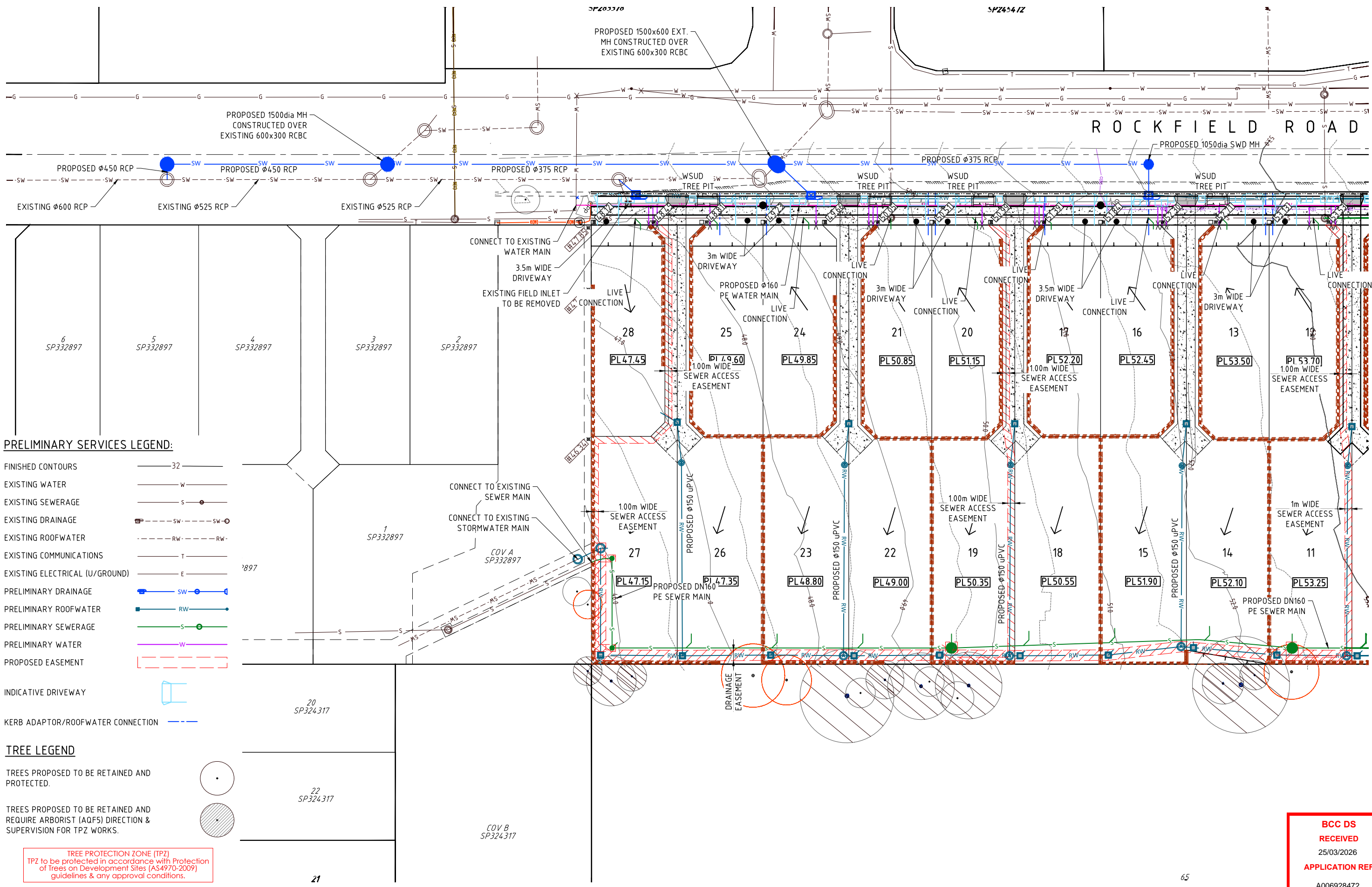
BRISBANE - SUNSHINE COAST - CENTRAL QLD
 BRISBANE
 JFP House - 76 Ernest Street,
 South Brisbane Qld 4101
 P 07 3012 0100 W www.jfp.com.au

PLANNERS
 URBAN DESIGNERS
 SURVEYORS
 ENGINEERS
 LANDSCAPE ARCHITECTS

ENGINEERING CONCEPT - EARTHWORKS DETAILS PLAN

92 REDHEAD STREET, DOOLANDELLA
 AUSBUILD GROUP PTY LTD

JOB NO: B4687EA2_DA6
 PLAN: CE04
 ISSUE: B
 SCALE: 1:20 @ A1
 DATE: 03/03/2026
 DRAFTED BY: PGM
 FILE NAME: B4687EA2_DA6.DWG



PRELIMINARY SERVICES LEGEND:

- FINISHED CONTOURS ——— 32 ———
- EXISTING WATER ——— W ———
- EXISTING SEWERAGE ——— S ———
- EXISTING DRAINAGE ——— SW ——— SW ———
- EXISTING ROOFWATER ——— RW ——— RW ———
- EXISTING COMMUNICATIONS ——— T ———
- EXISTING ELECTRICAL (U/GROUND) ——— E ———
- PRELIMINARY DRAINAGE ——— SW ——— SW ———
- PRELIMINARY ROOFWATER ——— RW ——— RW ———
- PRELIMINARY SEWERAGE ——— S ——— S ———
- PRELIMINARY WATER ——— W ——— W ———
- PROPOSED EASEMENT [Red dashed line symbol]
- INDICATIVE DRIVEWAY [Blue rectangle symbol]
- KERB ADAPTOR/ROOFWATER CONNECTION [Blue dashed line symbol]

TREE LEGEND

- TREES PROPOSED TO BE RETAINED AND PROTECTED. [Circle with dot symbol]
- TREES PROPOSED TO BE RETAINED AND REQUIRE ARBORIST (AQF5) DIRECTION & SUPERVISION FOR TPZ WORKS. [Circle with hatched pattern symbol]

TREE PROTECTION ZONE (TPZ)
 TPZ to be protected in accordance with Protection of Trees on Development Sites (AS4970-2009) guidelines & any approval conditions.



BRISBANE - SUNSHINE COAST - CENTRAL QLD
 BRISBANE
 JFP House - 76 Ernest Street,
 South Brisbane Qld 4101
 P 07 3012 0100 W www.jfp.com.au
 JFP URBAN CONSULTANTS PTY. LTD. A.C.N. 050 414 045

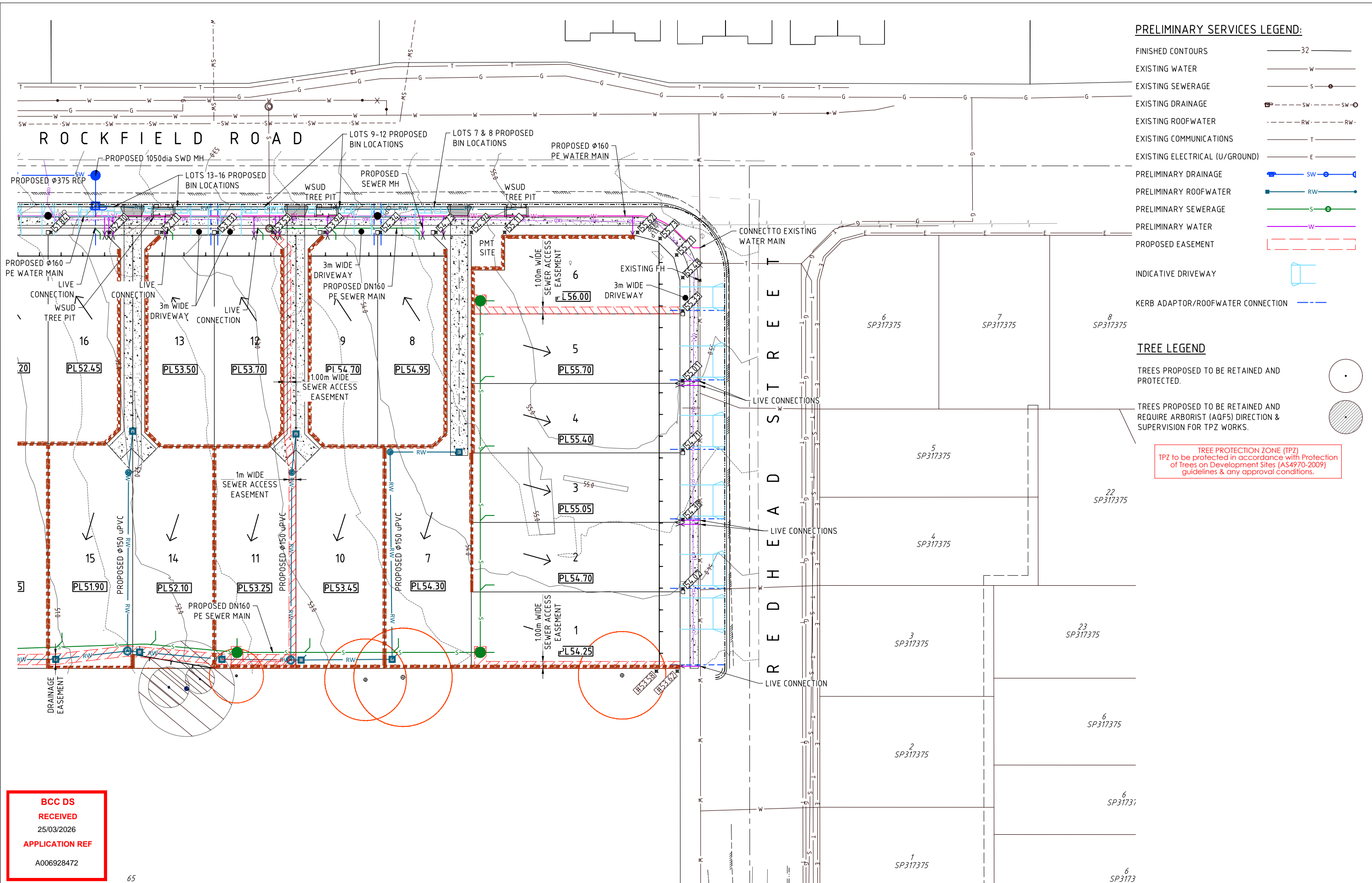
PLANNERS
 URBAN DESIGNERS
 SURVEYORS
 ENGINEERS
 LANDSCAPE ARCHITECTS

ENGINEERING CONCEPT - SERVICES LAYOUT PLAN

92 REDHEAD STREET, DOOLANDELLA
 AUSBUILD GROUP PTY LTD

**BCC DS
 RECEIVED**
 25/03/2026
APPLICATION REF
 A006928472

JOB NO: B4687EA2_DA6 PLAN: CS01 ISSUE: B
 SCALE: 1:250 @ A1
 DATE: 03/03/2026
 DRAFTED BY: PGM
 FILE NAME: B4687EA2_DA6.DWG



- PRELIMINARY SERVICES LEGEND:**
- FINISHED CONTOURS ——— 32 ———
 - EXISTING WATER ——— W ———
 - EXISTING SEWERAGE ——— S ———
 - EXISTING DRAINAGE ——— SW ——— SW ———
 - EXISTING ROOFWATER ——— RW ——— RW ———
 - EXISTING COMMUNICATIONS ——— T ———
 - EXISTING ELECTRICAL (U/GROUND) ——— E ———
 - PRELIMINARY DRAINAGE ——— SW ——— SW ———
 - PRELIMINARY ROOFWATER ——— RW ——— RW ———
 - PRELIMINARY SEWERAGE ——— S ——— S ———
 - PRELIMINARY WATER ——— W ——— W ———
 - PROPOSED EASEMENT [Red dashed line]
 - INDICATIVE DRIVEWAY [Blue dashed line]
 - KERB ADAPTOR/ROOFWATER CONNECTION [Blue dashed line]

- TREE LEGEND**
- TREES PROPOSED TO BE RETAINED AND PROTECTED. [Circle with dot]
 - TREES PROPOSED TO BE RETAINED AND REQUIRE ARBORIST (AQF5) DIRECTION & SUPERVISION FOR TPZ WORKS. [Circle with cross-hatch]

TREE PROTECTION ZONE (TPZ)
 TPZ to be protected in accordance with Protection of trees on Development Sites (AS4970-2009) guidelines & any approval conditions.

BCC DS
 RECEIVED
 25/03/2026
 APPLICATION REF
 A006928472

65

ENGINEERING CONCEPT - SERVICES LAYOUT PLAN

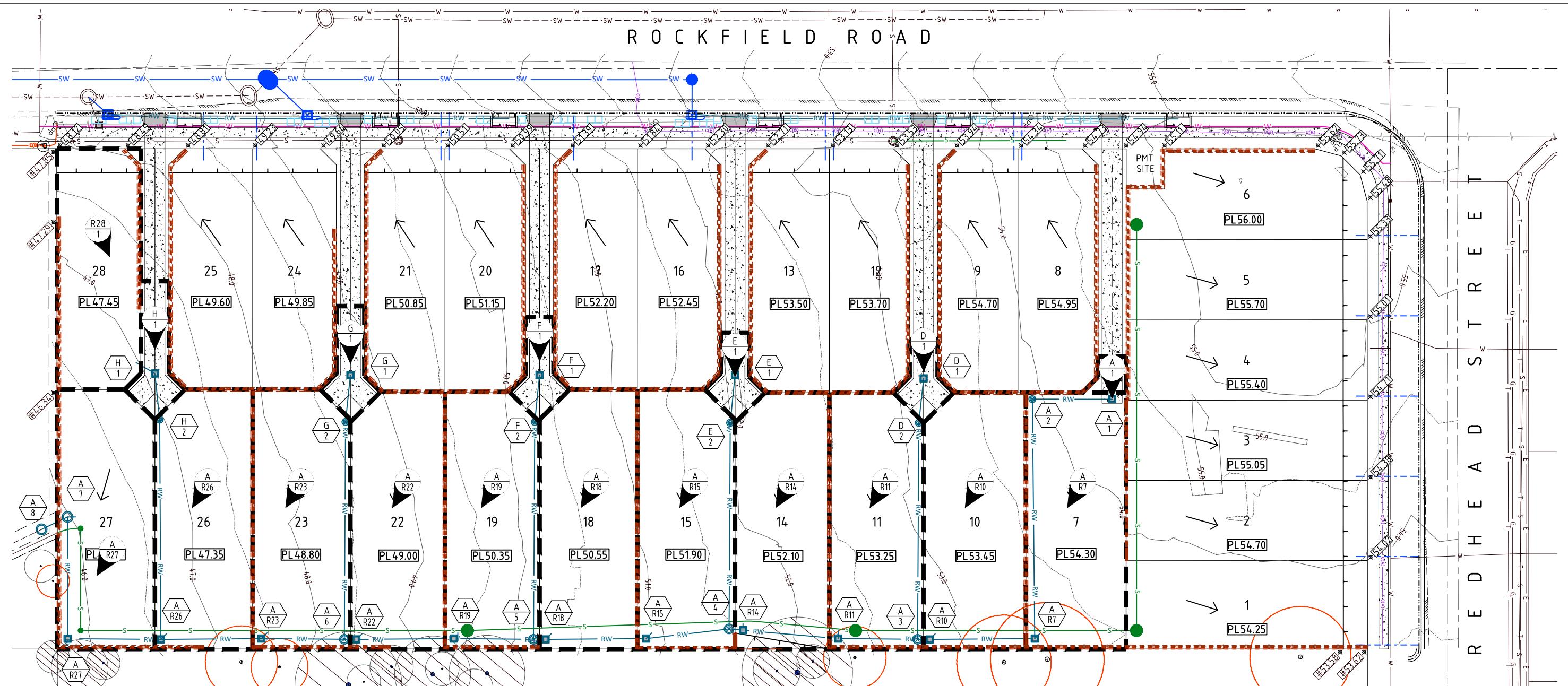
92 REDHEAD STREET, DOOLANDELLA
AUSBUILD GROUP PTY LTD

JFOP
 URBAN CONSULTANTS
 BRISBANE - SUNSHINE COAST - CENTRAL QLD
 BRISBANE
 JFP House - 76 Ernest Street,
 South Brisbane Qld 4101
 P 07 3012 0100 W www.jfp.com.au
 JFP URBAN CONSULTANTS PTY. LTD. A.C.N. 050 414 045
 PLANNERS
 URBAN DESIGNERS
 SURVEYORS
 ENGINEERS
 LANDSCAPE ARCHITECTS

JOB NO: **B4687EA2_DA6** PLAN: **CS02** ISSUE: **B**
 SCALE: 1:250 @ A1
 DATE: 03/03/2026
 DRAFTED BY: PGM
 FILE NAME: B4687EA2_DA6.DWG

ROCKFIELD ROAD

REDHEAD STREET



PRELIMINARY SERVICES LEGEND:

- FINISHED CONTOURS ——— 32 ———
- EXISTING WATER ——— W ———
- EXISTING SEWERAGE ——— S ———
- EXISTING DRAINAGE ——— SW ——— SW ———
- EXISTING ROOFWATER ——— RW ——— RW ———
- EXISTING COMMUNICATIONS ——— T ———
- EXISTING ELECTRICAL (U/GROUND) ——— E ———
- PRELIMINARY DRAINAGE ——— SW ——— SW ———
- PRELIMINARY ROOFWATER ——— RW ——— RW ———
- PRELIMINARY SEWERAGE ——— S ——— S ———
- PRELIMINARY WATER ——— W ——— W ———
- PROPOSED EASEMENT [Red dashed line symbol]
- INDICATIVE DRIVEWAY [Blue dashed line symbol]
- KERB ADAPTOR/ROOFWATER CONNECTION [Blue dashed line symbol]

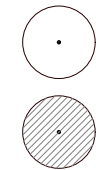
CATCHMENT TABLE

CATCHMENT NAME	CATCHMENT AREA (ha)	RUNOFF COEFF. MINOR	RUNOFF COEFF. MAJOR	CATCHMENT NAME	CATCHMENT AREA (ha)	RUNOFF COEFF. MINOR	RUNOFF COEFF. MAJOR
A\1	0.001	0.759	0.981	A\15	0.039	0.759	0.981
A\3	0.040	0.759	0.981	A\16	0.039	0.759	0.981
A\4	0.040	0.759	0.981	A\17	0.039	0.759	0.981
A\5	0.037	0.759	0.981	DX1	0.004	0.759	0.981
A\7	0.037	0.759	0.981	EX1	0.004	0.759	0.981
A\9	0.039	0.759	0.981	FX1	0.005	0.759	0.981
A\10	0.039	0.759	0.981	GV1	0.005	0.759	0.981
A\12	0.037	0.759	0.981	H\1	0.007	0.759	0.981
A\13	0.037	0.759	0.981	R28\1	0.031	0.759	0.981

TREE LEGEND

TREES PROPOSED TO BE RETAINED AND PROTECTED.

TREES PROPOSED TO BE RETAINED AND REQUIRE ARBORIST (AQF5) DIRECTION & SUPERVISION FOR TPZ WORKS.



TREE PROTECTION ZONE (TPZ)
 TPZ to be protected in accordance with Protection of Trees on Development Sites (AS4970-2009) guidelines & any approval conditions.

BCC DS
 RECEIVED
 25/03/2026
 APPLICATION REF
 A006928472



BRISBANE - SUNSHINE COAST - CENTRAL QLD
 BRISBANE
 JFP House - 76 Ernest Street,
 South Brisbane Qld 4101
 P 07 3012 0100 W www.jfp.com.au

PLANNERS
 URBAN DESIGNERS
 SURVEYORS
 ENGINEERS
 LANDSCAPE ARCHITECTS

ENGINEERING CONCEPT - ROOFWATER CATCHMENT PLAN

92 REDHEAD STREET, DOOLANDELLA
 AUSBUILD GROUP PTY LTD

JOB NO:	PLAN:	ISSUE:
B4687EA2_DA6	CS03	A
SCALE:	1:250 @ A1	
DATE:	03/03/2026	
DRAWN BY:	PGM	
FILE NAME:	B4687EA2_DA6.DWG	

COPYRIGHT © 2011 JFP URBAN CONSULTANTS PTY LTD. THIS DOCUMENT MAY NOT BE COPIED OR TRANSMITTED IN ANY FORM OR BY ANY MEANS IN PART OR IN WHOLE WITHOUT THE WRITTEN CONSENT OF JFP URBAN CONSULTANTS PTY LTD.

BCC DS
 RECEIVED
 25/03/2026
 APPLICATION REF
 A006928472

STRUCTURE NUMBER	STRUCTURE DESCRIPTION	LONGITUDINAL SECTION																			
A\1	ROOFWATER PIT - GRATED 600mm x 600mm																				
A\2	STD ROOFWATER PIT 550mm DIAMETER																				
A\7	ROOFWATER PIT - GRATED 600mm x 600mm																				
A\10	ROOFWATER PIT - GRATED 600mm x 600mm																				
A\3	STD ROOFWATER PIT 900mm DIAMETER																				
A\11	ROOFWATER PIT - GRATED 600mm x 600mm																				
A\14	ROOFWATER PIT - GRATED 600mm x 600mm																				
A\4	STD ROOFWATER PIT 900mm DIAMETER																				
A\15	ROOFWATER PIT - GRATED 600mm x 600mm																				
A\18	ROOFWATER PIT - GRATED 600mm x 600mm																				
A\5	STD ROOFWATER PIT 900mm DIAMETER																				
A\19	ROOFWATER PIT - GRATED 600mm x 600mm																				
A\22	ROOFWATER PIT - GRATED 600mm x 600mm																				
A\6	STD ROOFWATER PIT 900mm DIAMETER																				
A\23	ROOFWATER PIT - GRATED 600mm x 600mm																				
A\26	ROOFWATER PIT - GRATED 600mm x 600mm																				
A\27	ROOFWATER PIT - GRATED 600mm x 600mm																				
A\7	STD BCC MANHOLE 1050mm DIAMETER																				
A\8	STD BCC MANHOLE 1050mm DIAMETER																				
A\9	STD BCC MANHOLE 1050mm DIAMETER																				
PIPE SIZE (mm)		150	150	150	225	225	225	225	225	300	300	300	300	300	300	300	300	300	300	300	
PIPE CLASS		U	U	U	U	U	U	U	U	U	U	U	U	U	U	U	U	U	U	U	4
PIPE GRADE (%)		0.5%	0.5%	1%	0.5%	0.5%	1%	2%	2%	1%	1%	1%	1.2%	1.5%	1.5%	1.8%	2.2%	2.6%	2.6%	9.85%	
PIPE GRADE (1 in)		1 in 200	1 in 200	1 in 100	1 in 200	1 in 200	1 in 100	1 in 50	1 in 50	1 in 100	1 in 100	1 in 83.3	1 in 66.7	1 in 66.7	1 in 55.6	1 in 45.5	1 in 38.5	1 in 38.5	1 in 10.2		
FULL PIPE VELOCITY (m/s)		Vf=0.72	Vf=0.72	Vf=1.02	Vf=0.94	Vf=0.94	Vf=1.34	Vf=1.89	Vf=1.89	Vf=1.62	Vf=1.62	Vf=1.62	Vf=1.77	Vf=1.98	Vf=1.98	Vf=2.17	Vf=2.40	Vf=2.61	Vf=2.61	Vf=4.29	
NORMAL DEPTH VELOCITY (m/s)		Vn=0.33	Vn=0.33	Vn=1.14	Vn=1.05	Vn=1.06	Vn=1.50	Vn=2.11	Vn=2.11	Vn=1.74	Vn=1.80	Vn=1.80	Vn=1.99	Vn=2.24	Vn=2.24	Vn=2.46	Vn=2.73	Vn=2.97	Vn=2.97	Vn=4.51	
DATUM RL (m)		33.0																			
PIPE FLOW (Cumecs)		0.000	0.000	0.015	0.030	0.031	0.046	0.061	0.062	0.077	0.092	0.094	0.109	0.124	0.125	0.140	0.172	0.187	0.187	0.187	
PIPE CAPACITY AT GRADE (Cumecs)		0.013	0.013	0.018	0.038	0.038	0.053	0.075	0.075	0.114	0.114	0.114	0.125	0.140	0.140	0.153	0.170	0.184	0.184	0.304	
WATER LEVEL IN STRUCTURE		53.710	53.709	53.640	53.026	52.684	52.512	51.741	51.430	51.411	51.411	50.745	49.818	48.761	48.174	47.263	47.062	46.079	45.126	42.151	
HYDRAULIC GRADE LEVEL		53.709	53.659	53.640	53.490	52.925	52.786	52.684	52.670	52.670	52.670	52.670	50.884	49.751	48.316	47.240	46.933	45.959	45.236	42.151	
DEPTH TO INVERT		0.647	0.662	0.682	0.785	1.446	0.726	0.873	0.725	0.790	0.851	0.870	0.803	0.889	0.940	0.963	1.119	1.557	0.886	1.109	
INVERT LEVEL OF DRAIN		53.691	53.641	53.621	53.472	52.810	52.679	52.532	52.524	52.217	51.169	49.635	49.561	49.296	48.208	47.696	46.567	45.988	44.763	41.991	
DESIGN SURFACE LEVEL		54.337	54.303	54.257	54.257	53.405	53.249	53.206	52.055	51.902	51.857	50.505	50.349	49.795	48.752	47.305	46.243	47.130	45.872	43.200	
SETOUT COORDINATES		E497952.726 N6945386.214	E497951.114 N6945376.406	E497980.603 N6945371.864	E497978.578 N6945358.921	E497978.335 N6945357.441	E497976.632 N6945347.688	E497973.679 N6945336.164	E497973.245 N6945334.470	E497972.753 N6945324.074	E497970.821 N6945311.694	E497970.578 N6945298.435	E497968.869 N6945286.954	E497967.001 N6945276.777	E497964.985 N6945264.397	E497961.080 N6945252.944	E497946.005 N6945255.396	E497947.122 N6945251.916	E497955.114 N6945224.849	E497955.114 N6945224.849	
RUNNING CHAINAGE PIPE LENGTH		-39.776	9.940	-29.836	29.836	0.000	13.100	13.100	1.500	14.600	9.900	24.501	11.896	36.397	17.49	10.407	48.553	12.530	61.084	1.500	

LINE A



BRISBANE - SUNSHINE COAST - CENTRAL QLD
 BRISBANE
 JFP House - 76 Ernest Street,
 South Brisbane Qld 4101
 P 07 3012 0100 W www.jfp.com.au
 JFP URBAN CONSULTANTS PTY. LTD. A.C.N. 050 414 045

PLANNERS
 URBAN DESIGNERS
 SURVEYORS
 ENGINEERS
 LANDSCAPE ARCHITECTS

ENGINEERING CONCEPT - ROOFWATER LONGITUDINAL SECTIONS - SHEET 1

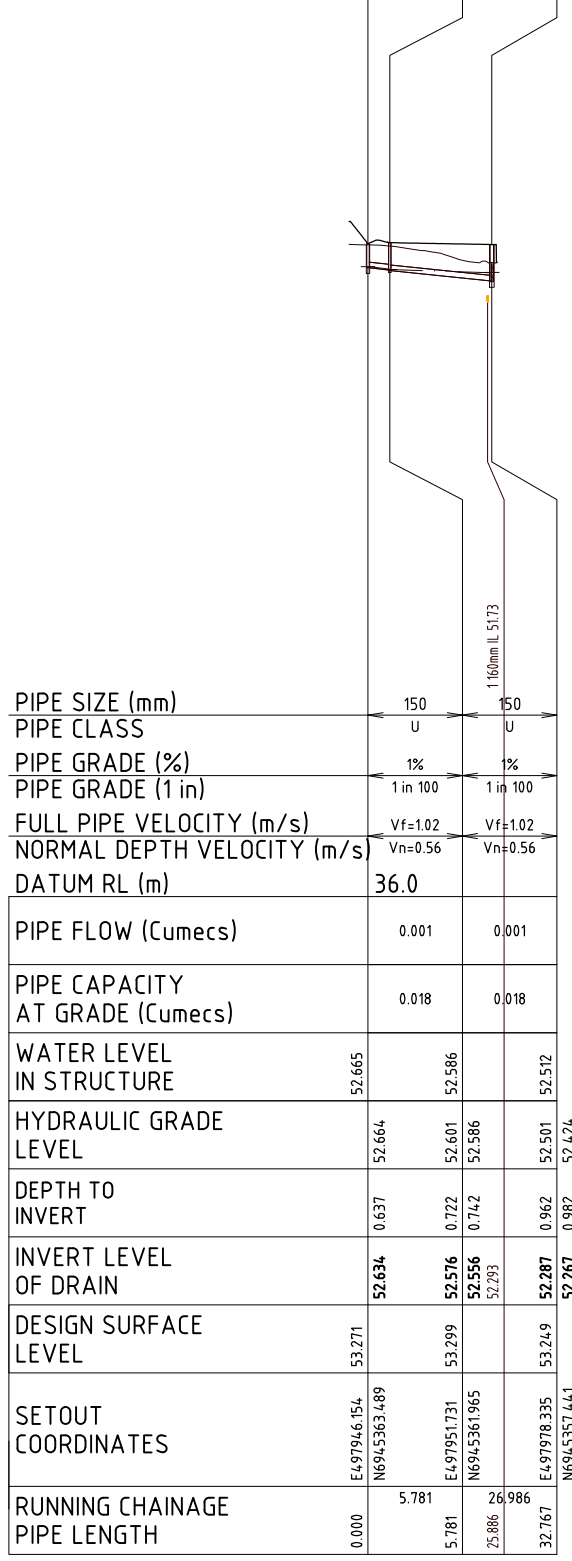
92 REDHEAD STREET, DOOLANDELLA
 AUSBUILD GROUP PTY LTD

JOB NO:	PLAN:	ISSUE:
B4687EA2_DA6	CS04	A
SCALE:	1:250 @ A1	
DATE:	03/03/2026	
DRAFTED BY:	PGM	
FILE NAME:	B4687EA2_DA6.DWG	

I:\03\2026\N\14687\A\DESIGN\WORKING DRAWINGS\B4687EA2.DWG

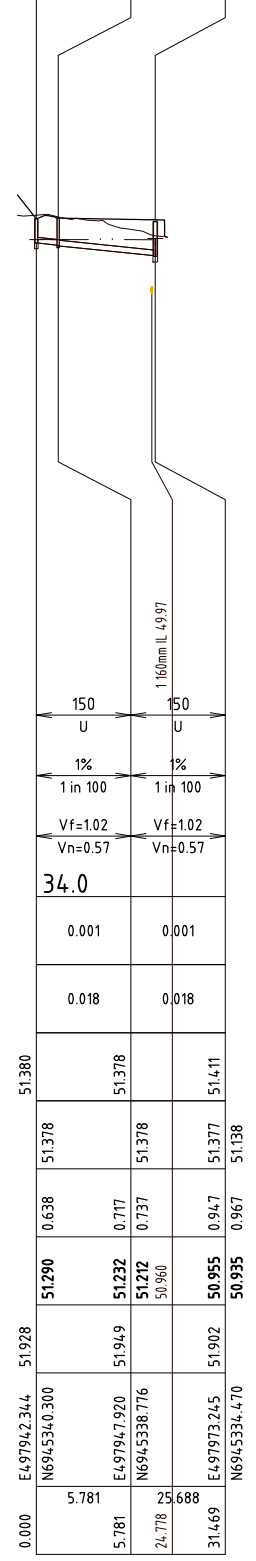
BCC DS
 RECEIVED
 25/03/2026
 APPLICATION REF
 A006928472

STRUCTURE NUMBER	D\1
STRUCTURE DESCRIPTION	ROOFWATER PIT - GRATED 600mm x 600mm



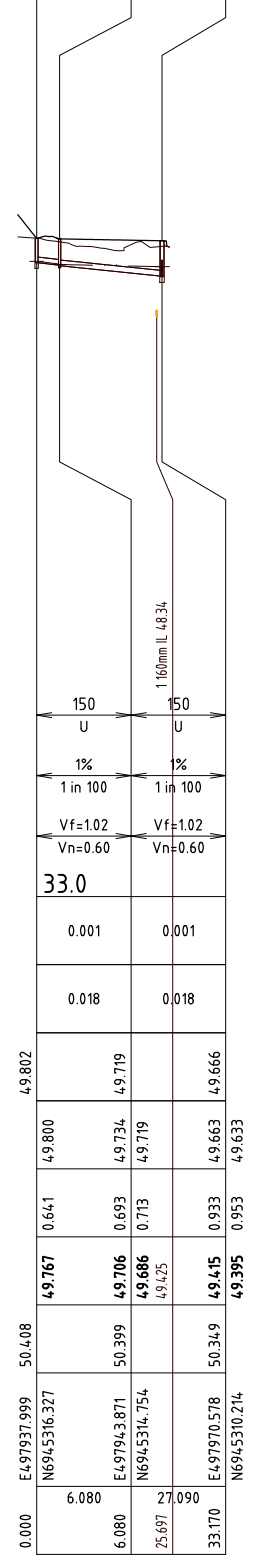
PIPE SIZE (mm)	150	150
PIPE CLASS	U	U
PIPE GRADE (%)	1%	1%
PIPE GRADE (1 in)	1 in 100	1 in 100
FULL PIPE VELOCITY (m/s)	Vf=1.02	Vf=1.02
NORMAL DEPTH VELOCITY (m/s)	Vn=0.56	Vn=0.56
DATUM RL (m)	36.0	
PIPE FLOW (Cumecs)	0.001	0.001
PIPE CAPACITY AT GRADE (Cumecs)	0.018	0.018
WATER LEVEL IN STRUCTURE	52.665	52.586
HYDRAULIC GRADE LEVEL	52.664	52.586
DEPTH TO INVERT	0.637	0.742
INVERT LEVEL OF DRAIN	52.634	52.556
DESIGN SURFACE LEVEL	53.271	53.299
SETOUT COORDINATES	E497946.154 N6945363.489	E497951.731 N6945361.965
RUNNING CHAINAGE PIPE LENGTH	0.000 5.781	25.886 32.767

STRUCTURE NUMBER	E\1
STRUCTURE DESCRIPTION	ROOFWATER PIT - GRATED 600mm x 600mm



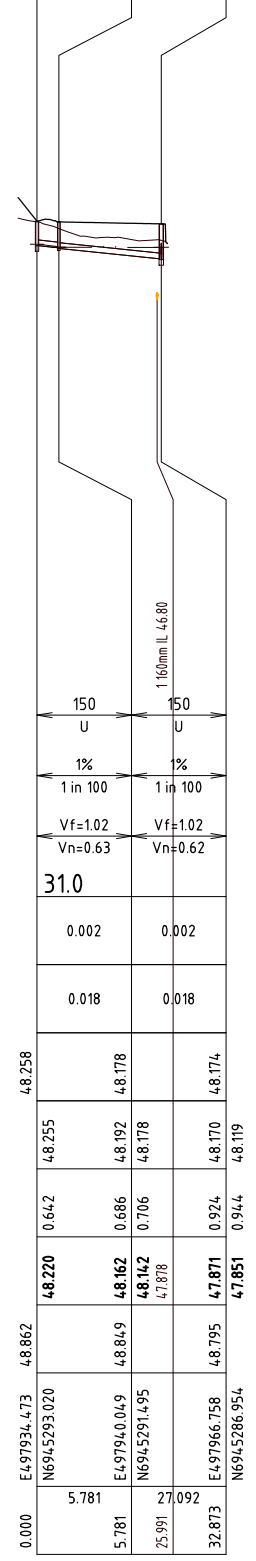
PIPE SIZE (mm)	150	150
PIPE CLASS	U	U
PIPE GRADE (%)	1%	1%
PIPE GRADE (1 in)	1 in 100	1 in 100
FULL PIPE VELOCITY (m/s)	Vf=1.02	Vf=1.02
NORMAL DEPTH VELOCITY (m/s)	Vn=0.57	Vn=0.57
DATUM RL (m)	34.0	
PIPE FLOW (Cumecs)	0.001	0.001
PIPE CAPACITY AT GRADE (Cumecs)	0.018	0.018
WATER LEVEL IN STRUCTURE	51.380	51.378
HYDRAULIC GRADE LEVEL	51.378	51.378
DEPTH TO INVERT	0.638	0.717
INVERT LEVEL OF DRAIN	51.290	51.232
DESIGN SURFACE LEVEL	51.928	51.949
SETOUT COORDINATES	E497942.344 N6945340.300	E497947.920 N6945338.776
RUNNING CHAINAGE PIPE LENGTH	0.000 5.781	24.718 31.469

STRUCTURE NUMBER	F\1
STRUCTURE DESCRIPTION	ROOFWATER PIT - GRATED 600mm x 600mm



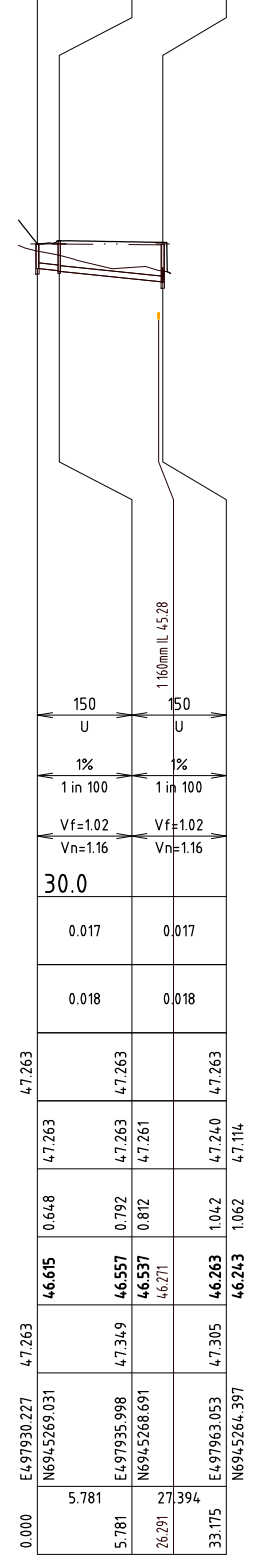
PIPE SIZE (mm)	150	150
PIPE CLASS	U	U
PIPE GRADE (%)	1%	1%
PIPE GRADE (1 in)	1 in 100	1 in 100
FULL PIPE VELOCITY (m/s)	Vf=1.02	Vf=1.02
NORMAL DEPTH VELOCITY (m/s)	Vn=0.60	Vn=0.60
DATUM RL (m)	33.0	
PIPE FLOW (Cumecs)	0.001	0.001
PIPE CAPACITY AT GRADE (Cumecs)	0.018	0.018
WATER LEVEL IN STRUCTURE	49.802	49.719
HYDRAULIC GRADE LEVEL	49.800	49.734
DEPTH TO INVERT	0.641	0.693
INVERT LEVEL OF DRAIN	49.767	49.706
DESIGN SURFACE LEVEL	50.408	50.399
SETOUT COORDINATES	E497937.999 N6945316.327	E497940.049 N6945291.495
RUNNING CHAINAGE PIPE LENGTH	0.000 6.080	25.697 33.170

STRUCTURE NUMBER	G\1
STRUCTURE DESCRIPTION	ROOFWATER PIT - GRATED 600mm x 600mm



PIPE SIZE (mm)	150	150
PIPE CLASS	U	U
PIPE GRADE (%)	1%	1%
PIPE GRADE (1 in)	1 in 100	1 in 100
FULL PIPE VELOCITY (m/s)	Vf=1.02	Vf=1.02
NORMAL DEPTH VELOCITY (m/s)	Vn=0.63	Vn=0.62
DATUM RL (m)	31.0	
PIPE FLOW (Cumecs)	0.002	0.002
PIPE CAPACITY AT GRADE (Cumecs)	0.018	0.018
WATER LEVEL IN STRUCTURE	48.258	48.178
HYDRAULIC GRADE LEVEL	48.255	48.178
DEPTH TO INVERT	0.642	0.686
INVERT LEVEL OF DRAIN	48.220	48.162
DESIGN SURFACE LEVEL	48.862	48.849
SETOUT COORDINATES	E497934.473 N6945293.020	E497940.049 N6945291.495
RUNNING CHAINAGE PIPE LENGTH	0.000 5.781	25.991 32.873

STRUCTURE NUMBER	H\1
STRUCTURE DESCRIPTION	ROOFWATER PIT - GRATED 600mm x 600mm



PIPE SIZE (mm)	150	150
PIPE CLASS	U	U
PIPE GRADE (%)	1%	1%
PIPE GRADE (1 in)	1 in 100	1 in 100
FULL PIPE VELOCITY (m/s)	Vf=1.02	Vf=1.02
NORMAL DEPTH VELOCITY (m/s)	Vn=1.16	Vn=1.16
DATUM RL (m)	30.0	
PIPE FLOW (Cumecs)	0.017	0.017
PIPE CAPACITY AT GRADE (Cumecs)	0.018	0.018
WATER LEVEL IN STRUCTURE	47.263	47.263
HYDRAULIC GRADE LEVEL	47.263	47.263
DEPTH TO INVERT	0.648	0.792
INVERT LEVEL OF DRAIN	46.615	46.557
DESIGN SURFACE LEVEL	47.263	47.349
SETOUT COORDINATES	E497930.227 N6945269.031	E497935.998 N6945268.691
RUNNING CHAINAGE PIPE LENGTH	0.000 5.781	26.291 33.175

BRISBANE - SUNSHINE COAST - CENTRAL QLD

BRISBANE
 JFP House - 76 Ernest Street,
 South Brisbane Qld 4101
 P 07 3012 0100 W www.jfp.com.au

PLANNERS
 URBAN DESIGNERS
 SURVEYORS
 ENGINEERS
 LANDSCAPE ARCHITECTS

URBAN CONSULTANTS JFP URBAN CONSULTANTS PTY. LTD. A.C.N. 050 414 045

COPYRIGHT © 2011 JFP URBAN CONSULTANTS PTY LTD. THIS DOCUMENT MAY NOT BE COPIED OR TRANSMITTED IN ANY FORM OR BY ANY MEANS IN PART OR IN WHOLE WITHOUT THE WRITTEN CONSENT OF JFP URBAN CONSULTANTS PTY LTD.

ENGINEERING CONCEPT - ROOFWATER LONGITUDINAL SECTIONS - SHEET 2

**92 REDHEAD STREET, DOOLANDELLA
 AUSBUILD GROUP PTY LTD**

JOB NO:	PLAN:	ISSUE:
B4687EA2_DA6	CS05	A
SCALE:	1:250 @ A1	
DATE:	03/03/2026	
DRAFTED BY:	PGM	
FILE NAME:	B4687EA2_DA6.DWG	

I:\03\2026\N\14687\A\DESIGN\WORKING DRAWINGS\B4687EA2.DWG

SEWER NOTES:

- UNLESS NOTED OTHERWISE ALL PIPES AND MATERIALS SHALL COMPLY WITH THE REQUIREMENTS OF THE "ACCEPTED PRODUCTS AND MATERIALS" LIST.
- UNLESS NOTED OTHERWISE THE SEWER MAIN PIPE IS DN160 PE100.
- UNLESS NOTED OTHERWISE EACH ALLOTMENT IS SERVED BY A DN110 PE100 PROPERTY CONNECTION (10 METRES MAX LENGTH)
- MAINTENANCE STRUCTURES TO BE EITHER A TYPE G, TYPE F, TYPE X OR MAINTENANCE SHAFTS IN ACCORDANCE WITH SEQ STANDARDS.
- FINAL MANHOLE STRUCTURE TYPE WILL BE DETERMINED AT DETAIL DESIGN STAGE ONCE THE DEPTH OF THE SEWER MAIN IS KNOWN.

WATER NOTES:

- THE FINAL LOCATION OF THE THE WATER METERS IS SUBJECT TO OPERATIONAL WORKS DESIGN
- ALL WATER METERS TO BE 20mm DIA AS PER SEQ WATER CODE

SERVICE DETAILS

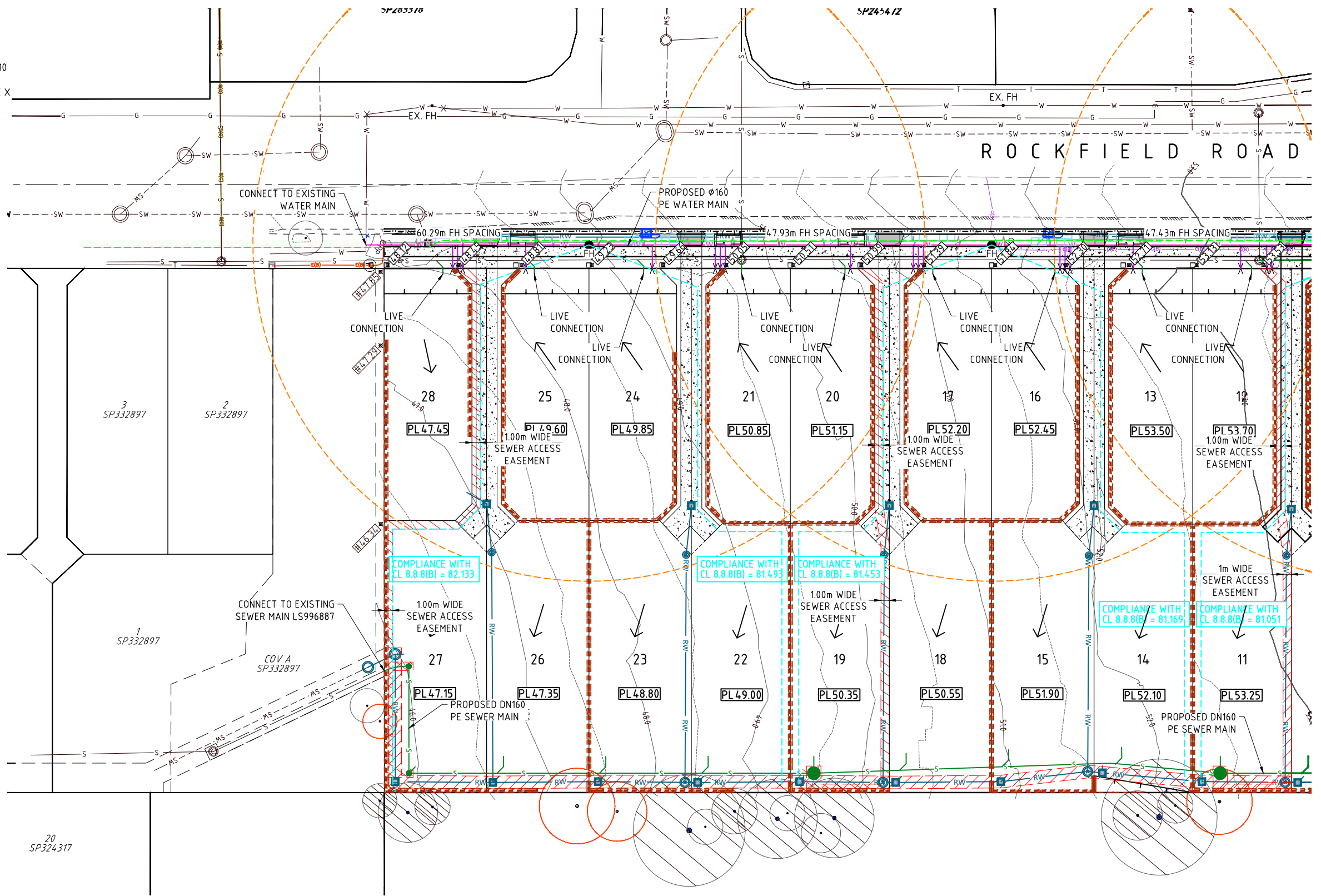
No.	SIZE	LOT NUMBERS
28	25mm	LOTS 1-28

PIPE LENGTHS

WATER MAIN	DN180 PE100	170m
WATER SERVICE CONNECTION	DN40	-
WATER SERVICE CONNECTION	DN32	-
WATER SERVICE CONNECTION	DN25	80m
SEWER MAIN	DN160 PE 100	221m
SEWER MAIN SERVICE CONNECTION	PE 100	-

PRELIMINARY SERVICES LEGEND:

- FINISHED CONTOURS ——— 32 ———
- EXISTING WATER ——— W ———
- EXISTING SEWERAGE ——— S ———
- EXISTING DRAINAGE ——— SW ——— SW ———
- EXISTING ROOFWATER ——— RW ——— RW ———
- EXISTING COMMUNICATIONS ——— T ———
- EXISTING ELECTRICAL (U/GROUND) ——— E ———
- PRELIMINARY DRAINAGE ——— SW ——— SW ———
- PRELIMINARY ROOFWATER ——— RW ——— RW ———
- PRELIMINARY SEWERAGE ——— S ——— S ———
- PRELIMINARY WATER ——— W ——— W ———
- PROPOSED EASEMENT
- INDICATIVE DRIVEWAY
- FIRE HYDRANT ——— FH ——— W ———
- FIRE HYDRANT SPACING 40m CHECK ——— - - - - -
- FIRE HYDRANT SPACING 80m CHECK ——— - - - - -
- COMPLIANCE WITH CL8.8.8(B) (90m MAX.) ——— - - - - -
- FINISHED CONTOURS ——— 16 ———



TREE LEGEND

- TREES PROPOSED TO BE RETAINED AND PROTECTED.
- TREES PROPOSED TO BE RETAINED AND REQUIRE ARBORIST (AQFS) DIRECTION & SUPERVISION FOR TPZ WORKS.

TREE PROTECTION ZONE (TPZ)
TPZ to be protected in accordance with Protection of Trees on Development Sites (AS4970-2009) guidelines & any approval conditions.

ENGINEERING CONCEPT - WATER & WASTE WATER LAYOUT PLAN

92 REDHEAD STREET, DOOLANDELLA
AUSBUILD GROUP PTY LTD

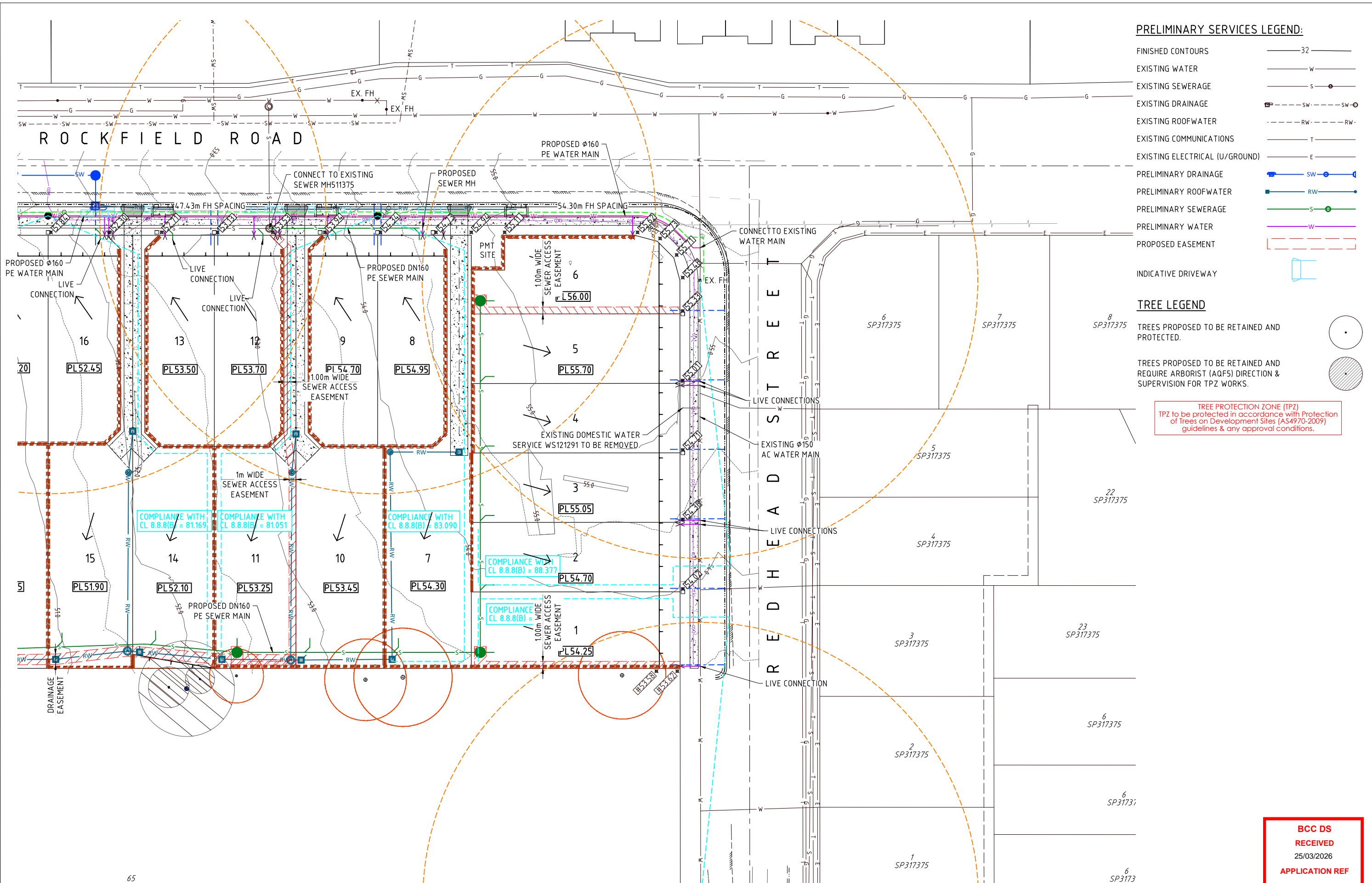


BRISBANE - SUNSHINE COAST - CENTRAL QLD
BRISBANE
JFP House - 76 Ernest Street,
South Brisbane Qld 4101
P 07 3012 0100 W www.jfp.com.au

PLANNERS
URBAN DESIGNERS
SURVEYORS
ENGINEERS
LANDSCAPE ARCHITECTS

JOB NO: B4687EA2_DA6 PLAN: CW01 ISSUE: B
SCALE: 1:250 @ A1
DATE: 03/03/2026
DRAFTED BY: PGM
FILE NAME: B4687EA2_DA6.DWG

**BCC DS
RECEIVED**
25/03/2026
APPLICATION REF
A006928472



PRELIMINARY SERVICES LEGEND:

FINISHED CONTOURS	— 32 —
EXISTING WATER	— W —
EXISTING SEWERAGE	— S —
EXISTING DRAINAGE	— SW —
EXISTING ROOFWATER	— RW —
EXISTING COMMUNICATIONS	— T —
EXISTING ELECTRICAL (U/GROUND)	— E —
PRELIMINARY DRAINAGE	— SW —
PRELIMINARY ROOFWATER	— RW —
PRELIMINARY SEWERAGE	— S —
PRELIMINARY WATER	— W —
PROPOSED EASEMENT	— [Red Dashed Line] —
INDICATIVE DRIVEWAY	— [Blue Outline] —

TREE LEGEND

TREES PROPOSED TO BE RETAINED AND PROTECTED.	— [Circle with Dotted Center] —
TREES PROPOSED TO BE RETAINED AND REQUIRE ARBORIST (AQFS) DIRECTION & SUPERVISION FOR TPZ WORKS.	— [Circle with Hatched Center] —

TREE PROTECTION ZONE (TPZ)
 TPZ to be protected in accordance with Protection of Trees on Development Sites (AS4970-2009) guidelines & any approval conditions.

65

JFOP
 URBAN CONSULTANTS
 BRISBANE - SUNSHINE COAST - CENTRAL QLD
 BRISBANE
 JFP House - 76 Ernest Street,
 South Brisbane Qld 4101
 P 07 3012 0100 W www.jfp.com.au
 JFP URBAN CONSULTANTS PTY. LTD. A.C.N. 050 414 045

PLANNERS
 URBAN DESIGNERS
 SURVEYORS
 ENGINEERS
 LANDSCAPE ARCHITECTS

ENGINEERING CONCEPT - SERVICES LAYOUT PLAN
 92 REDHEAD STREET, DOOLANDELLA
 AUSBUILD GROUP PTY LTD

BCC DS RECEIVED
 25/03/2026
APPLICATION REF
 A006928472

JOB NO:	PLAN:	ISSUE:
B4687EA2_DA6	CW02	B
SCALE:	1:250 @ A1	
DATE:	03/03/2026	
DRAFTED BY:	PGM	
FILE NAME:	B4687EA2_DA6.DWG	

T:\03\2026\N\14687\A\DESIGN\WORKING DRAWINGS\B4687EA2.DWG