

BRISBANE CITY COUNCIL

12-16 RYLATT STREET, INDOOROOPIILLY

LOTS 8-11 & 30 on RP23684



SITE LOCATION
NTS

DRAWING INDEX		
DRAWING No.	DRAWING TITLE	REVISION
SK001	COVERSHEET & DRAWING INDEX	C
SK002	PLANTING PLAN - GROUND FLOOR	C
SK003	PLANTING PLAN - LEVEL 1	C
SK004	PLANTING PLAN - LEVEL 2	C
SK005	PLANTING PLAN - LEVEL 3	C
SK006	PLANTING PLAN - LEVEL 4	C
SK007	PLANTING PLAN - LEVELS 5-9 TYPICAL	C
SK008	PLANTING PLAN - LEVEL 10 ROOFTOP TERRACE	C
SK010	SECTIONS - SHEET 1	C
SK011	SECTIONS - SHEET 2	C
SK020	PLANTER DEPTH SUMMARY DIAGRAMS - SHEET 1	C
SK021	PLANTER DEPTH SUMMARY DIAGRAMS - SHEET 2	C
SK022	PLANTER DEPTH SUMMARY DETAILS	C
SK030	PLANT SPECIES SCHEDULE, IMAGES & NOTES	C
SK040	CHARACTER REFERENCE IMAGERY	C

PRELIMINARY

rev	description	drawn	date
C	REVISED ISSUE	MS	23.06.26
B	REVISED ISSUE	JM	12.03.26

GD DEVELOPMENTS ONE PTY TD
 12-16 RYLATT STREET, INDOOROOPIILLY
LANDSCAPE CONCEPT PLAN
COVERSHEET & DRAWING INDEX

LAUD ink

landscape architecture & urban design

Office 7, 915 Ann Street, Fortitude Valley, QLD 4006
 E eleas@laudink.com.au / jane@laudink.com.au
 W www.laudink.com.au

ABN 80 169 838 144

N

Conditions of Use: This document may only be used by LAUD ink's client (and any other person who LAUD ink has agreed can use this document) for the purpose for which it was prepared and must not be used by any other person or for any other purpose.

scale | NTS for A1 job no. | 2510-018
 date | JUN 2026 rev no. | C

approved... E. NICHOLAOU* SK001



PLAN
SCALE 1:200

ANNOTATION NOTES

- 1 EXISTING DRIVEWAY CROSSOVERS TO BE REMOVED. REINSTATE TO EXISTING TURFED VERGE, FOOTPATH, KERB & CHANNEL
- 2 PROPOSED DRIVEWAY CROSSOVER AND CARPARK SPACES TO ENGINEER'S DETAILS
- 3 EXISTING MATURE STREET TREES CALLITRIS columellaris (BRIBIE ISLAND PINE) ON SHIRLEY STREET FRONTAGE TO BE RETAINED. SUBJECT TO ARBORIST'S REPORT AND CONFIRMATION ON-SITE
- 4 FEATURE TREE BUC cel AND SHADE TREE RAN fit TO PROVIDE AMENITY. TREES TO BE UNDERPLANTED WITH SHRUBS ASP ela, PHI XAN AND PIT MM WITH GROUNDCOVERS AGA afr (W), LIR EG, SEN man AND ZOY ten
- 5 COLUMNAR SCREENING TREES ELA eum TO PROVIDE SHADED AMENITY AND SOFTEN HARDSTAND. TREES TO BE UNDERPLANTED WITH SHRUBS AND GROUNDCOVERS AS PER PLANT SPECIES SCHEDULE ON DRG 2510-018-SK030
- 6 BUFFERING SHRUBS SYZ RES (CAPABLE OF A HEIGHT OF 3-5m) TO BE USED ALONG FENCE FRONTAGE WITH GROUNDCOVERS TO PROVIDE VISUAL AMENITY
- 7 PROPOSED LOCATION OF BOOSTER
- 8 REFER TO CIVIL ENGINEER'S DRAWINGS FOR STREETScape DESIGN
- 9 REFER TO ARCHITECT'S DRAWINGS FOR ALL INTERNAL DETAILS
- 10 RAMP DOWN BELOW TO BASEMENT 1
- 11 FIRE EGRESS STAIRS
- 12 LEVEL 1 ABOVE - REFER TO DRG 2510-018-SK003 FOR DETAILS
- 13 CONCRETE STEPPERS ACCESS TO THE STAIR
- 14 EXISTING STREET TREE JACARANDA mimosifolia TO BE REMOVED. SUBJECT TO ARBORIST'S REPORT AND CONFIRMATION ON-SITE
- 15 GARDEN BED TO FEATURE LOW GROUNDCOVERS AS PER PLANT SPECIES SCHEDULE ON DRG 2510-018-SK030 (MAX 0.5m HIGH) TO ENSURE PEDESTRIAN CLEAR SIGHTLINES
- 16 EXISTING STREET TREE THUJA orientalis (ABORVITAE) TO BE REMOVED. SUBJECT TO ARBORIST'S REPORT AND CONFIRMATION ON-SITE
- 17 PROPOSED STREET TREE CUP ana TO PROVIDE STREETScape AMENITY AND SOFTEN RYLATT STREET FRONTAGE. TREE TO BE PLANTED IN ACCORDANCE WITH BCC STANDARD DRAWINGS FOR BCC INFRASTRUCTURE DESIGN PLANNING SCHEME POLICY 6 SC6.16-3 ROAD CORRIDOR DESIGN- NEIGHBOURHOOD STREETS (TYPE NIEGHBOURHOOD STREET MAJOR-NS1)
- 18 LARGE SUB TROPICAL SHADE TREE WAT flo TO PROVIDE AMENITY. TREES TO BE UNDERPLANTED WITH SHRUBS AND GROUNDCOVERS AS PER PLANT SPECIES SCHEDULE ON DRG 2510-018-SK030

CHARACTER REFERENCE IMAGES



01 INDICATIVE IMAGERY OF 1800mm HIGH ALUMINIUM BATTEN FENCE PAINTED WHITE (50% TRANSPARENCY) TO FRONTAGES



02 INDICATIVE IMAGERY 1800mm HIGH TIMBER PALING FENCE TO REAR / SIDE BOUNDARY - WITH STEP DOWN WHERE REQUIRED.

BCC DS
RECEIVED
 24/06/2026
APPLICATION REF
 A006915607

LEGEND

- EXISTING MATURE STREET TREE TO BE REMOVED
- EXISTING TREE TO BE RETAINED
- PROPOSED FEATURE TREES
- PROPOSED SHADE TREES
- PROPOSED SHRUB AND LOW LEVEL PLANTING
- PROPOSED GROUNDCOVER PLANTING
- PROPOSED BUFFER PLANTING
- TURF
- HARDSTAND SURFACE FINISH TO PEDESTRIAN PRIORITY PATHWAY
- CONCRETE AREA - REFER CIVIL ENGINEERS DRGS FOR DETAILS
- PAVED AREA - REFER ARCHITECTS DRGS FOR DETAILS
- PROPOSED DRAINAGE GRAVEL
- STORMWATER AND DETENTION TANK - REFER CIVIL ENGINEERS DRGS FOR DETAILS
- SEWER - REFER CIVIL ENGINEERS DRGS FOR DETAILS
- BUILDING LINE OVER
- BASEMENT 01 LINE BELOW
- BASEMENT 02 LINE BELOW
- PROPERTY BOUNDARY
- EXISTING POWER POLE
- PEDESTRIAN SIGHT TRIANGLE
- DEEP PLANTING EXTENT - 215m² (10.66%) OF TOTAL SITE AREA

NOTES

- 1. REFER TO DRG 2510-018-SK030 FOR PLANT SPECIES SCHEDULE, IMAGES AND GENERAL NOTES
- 2. REFER ARCHITECTS DRGS FOR ALL FENCE DETAILS
- 3. REFER CIVIL ENGINEERS DRGS FOR ALL RETAINING WALL DETAILS

PRELIMINARY

rev	description	drawn	date
C	REVISED ISSUE	MS	23.06.26
B	REVISED ISSUE	JM	12.03.26

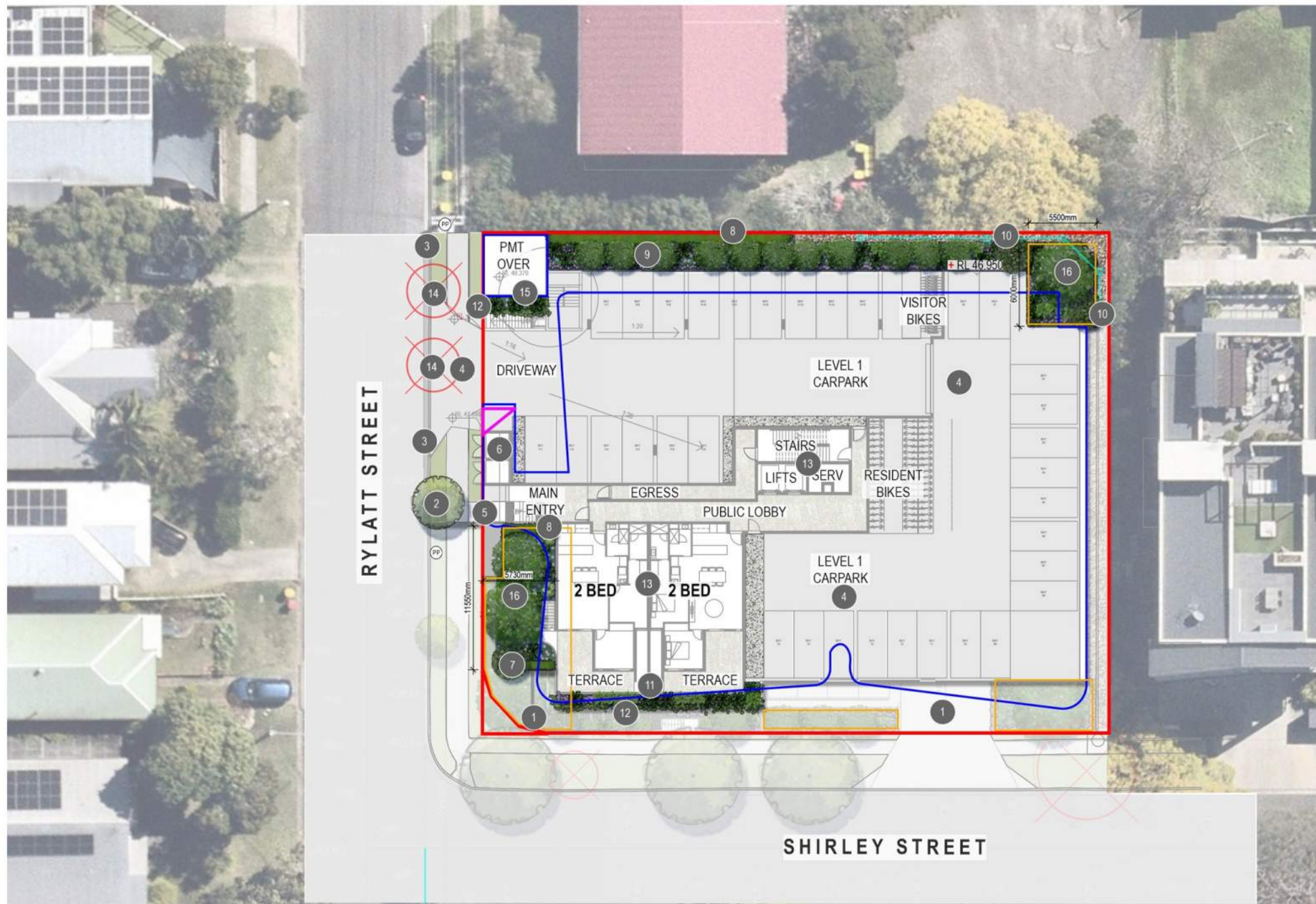
GD DEVELOPMENTS ONE PTY TD
 12-16 RYLATT STREET, INDOOROOPILLY
LANDSCAPE CONCEPT PLAN
PLANTING PLAN - GROUND FLOOR

LAUDink
 landscape architecture & urban design
 Office 7, 915 Ann Street, Fortitude Valley, QLD 4006
 E: elias@laudink.com.au / jane@laudink.com.au
 W: www.laudink.com.au
 ABN 80 169 838 144

Conditions of Use: This document may only be used by LAUDink's client (and any other person who LAUDink has agreed can use this document) for the purpose for which it was prepared and must not be used by any other person or for any other purpose.

scale 1:200 for A1 job no. 2510-018
 date JUN 2026 rev no. C

approved E. NICHOLAOU* SK002



PLAN
SCALE 1:200

ANNOTATION NOTES

- 1 GROUND FLOOR PLANTING PLAN BELOW - REFER TO DRG 2510-018-SK002 FOR DETAILS
- 2 EXISTING MATURE STREET TREE XANTHOSTEMON chrysanthus (GOLDEN PENDA) ON RYLATT STREET FRONTAGE TO BE RETAINED. SUBJECT TO ARBORIST'S REPORT AND CONFIRMATION ON-SITE
- 3 EXISTING DRIVEWAY CROSSOVER TO BE REMOVED AND REPLACED WITH PROPOSED LEVEL 1 DRIVEWAY CROSSOVER.
- 4 PROPOSED LEVEL 1 DRIVEWAY CROSSOVER AND CARPARK SPACES TO ENGINEERS DETAILS
- 5 PEDESTRIAN SITE ENTRY/ EXIT
- 6 PROPOSED LOCATIONS OF GAS AND WATER METERS
- 7 SHADE TREE RAN fit TO PROVIDE AMENITY. TREES TO BE UNDERPLANTED WITH SHRUBS AND GROUNDCOVERS AS PER PLANT SPECIES SCHEDULE ON DRG 2510-018-SK030
- 8 BUFFERING SHRUB SYZ RES TO SCREEN BOUNDARY INTERFACE AND FENCE FRONTAGE
- 9 COLUMNAR TREES ELA eum TO PROVIDE SCREENING TO BOUNDARY INTERFACE AND SOFTEN CARPARK HARDSTANDS. TREES TO BE UNDERPLANTED WITH SHRUBS ASP ela, PHI XAN AND PIT MM WITH GROUNDCOVERS AGA afr (W), LIR EG, SEN man AND ZOY ten
- 10 SHADE TREES RAN fit TO PROVIDE AMENITY AND SCREENING TO REAR BOUNDARY INTERFACE DEEP PLANTING ZONE. TREES TO BE UNDERPLANTED WITH SHRUBS AND GROUNDCOVERS AS PER PLANT SPECIES SCHEDULE ON DRG 2510-018-SK030
- 11 LEVEL 1 TERRACE PLANTERS TO PROVIDE VISUAL AMENITY AND SOFTEN BUILDING FACADE. PLANTER TO FEATURE SHRUBS CRA ova, MON del AND PHI CON WITH GROUNDCOVERS KAL thy, SEN man, VIO hed AND ZOY ten
- 12 CASCADING SPECIES APT cor AND DIC SF TO BE POSITIONED AT EDGE OF PLANTER TO PROVIDE VISUAL AMENITY AND SOFTEN BUILDING FACADE.
- 13 REFER TO ARCHITECT'S DRAWINGS FOR ALL INTERNAL DETAILS
- 14 EXISTING STREET TREES HIBISCUS cultivar ON RYLATT STREET FRONTAGE TO BE REMOVED. SUJCT TO ARBORIST'S REPORT AND CONFIRMATION ON-SITE
- 15 PLANTER TO INCLUDE FEATURE HARDY SHRUBS AND GROUNDCOVERS AS PER PLANT SPECIES SCHEDULE ON DRG 2510-018-SK030
- 16 LARGE SUB TROPICAL SHADE TREE WAT flo TO PROVIDE AMENITY. TREES TO BE UNDERPLANTED WITH SHRUBS AND GROUNDCOVERS AS PER PLANT SPECIES SCHEDULE ON DRG 2510-018-SK030

CHARACTER REFERENCE IMAGES



INDICATIVE IMAGERY OF FEATURE SHADE TREE PLANTING TO SOFTEN BUILDING AND CARPARK HARDSTANDS

LEGEND

- EXISTING TREE TO BE REMOVED
- EXISTING TREE TO BE RETAINED
- PROPOSED SHADE TREES
- PROPOSED SHRUB AND LOW LEVEL PLANTING
- PROPOSED GROUNDCOVER PLANTING
- PROPOSED CASCADING SPECIES
- PROPOSED BUFFER PLANTING
- TURF
- HARDSTAND SURFACE FINISH TO PEDESTRIAN PRIORITY PATHWAY
- CONCRETE AREA - REFER CIVIL ENGINEERS DRGS FOR DETAILS
- PAVED AREA - REFER ARCHITECTS DRGS FOR DETAILS
- STORMWATER - REFER CIVIL ENGINEERS DRGS FOR DETAILS
- BUILDING LINE OVER
- PROPERTY BOUNDARY
- +RL 48.370 PROPOSED LEVEL
- PEDESTRIAN SIGHT TRIANGLE
- EXISTING POWER POLE

BCC DS
RECEIVED
24/06/2026
APPLICATION REF
A006915607

NOTES

- 1. REFER TO DRG 2510-018-SK030 FOR PLANT SPECIES SCHEDULE, IMAGES AND GENERAL NOTES
- 2. REFER ARCHITECTS DRGS FOR ALL FENCE DETAILS
- 3. REFER CIVIL ENGINEERS DRGS FOR ALL RETAINING WALL DETAILS

PRELIMINARY

rev	description	drawn	date
C	REVISED ISSUE	MS	23.06.26
B	REVISED ISSUE	JM	12.03.26

GD DEVELOPMENTS ONE PTY TD
12-16 RYLATT STREET, INDOOROOPILLY
**LANDSCAPE CONCEPT PLAN
PLANTING PLAN - LEVEL 1**

LAUDink
landscape architecture & urban design
Office 7, 915 Ann Street, Fortitude Valley, QLD 4006
E: elias@laudink.com.au / jane@laudink.com.au
W: www.laudink.com.au
ABN 80 169 838 144

SCALE 1:200 AT ORIGINAL SIZE

Conditions of Use: This document may only be used by LAUDink's client (and any other person who LAUDink has agreed can use this document) for the purpose for which it was prepared and must not be used by any other person or for any other purpose.

scale | 1:200 for A1 job no. | 2510-018
date | JUN 2026 rev no. | C

approved | E. NICHOLAOU* SK003



PLAN
SCALE 1:200

ANNOTATION NOTES

- 1 LEVELS BELOW PLANTING PLANS - REFER TO DRG 2510-018-SK002 - 2510-018-SK003 FOR DETAILS
- 2 FEATURE ENTRY PLANTERS TO PROVIDE VISUAL AMENITY AND SOFTEN RYLATT STREET FRONTAGE AND BUILDING HARDSTAND. PLANTERS TO BE FEATURE A COMBINATION OF SHADE AND SUN TOLERANT SHRUBS AND GROUNDCOVERS AS PER PLANT SPECIES SCHEDULE ON DRG 2510-018-SK030
- 3 LEVEL 2 TERRACE PLANTERS TO PROVIDE VISUAL AMENITY AND SOFTEN BUILDING FACADE. PLANTER TO FEATURE SHRUBS LAV den, PHI XAN AND ROS off WITH GROUNDCOVERS DIE gra AND GAZ tom
- 4 CASCADING SPECIES APT cor AND DIC SF TO BE POSITIONED AT EDGE OF PLANTER TO PROVIDE VISUAL AMENITY AND SOFTEN BUILDING FACADE
- 5 REFER TO ARCHITECT'S DRAWINGS FOR ALL INTERNAL DETAILS

CHARACTER REFERENCE IMAGES



INDICATIVE IMAGERY OF BUILDING FRONTAGE WITH CASCADING PLANTS FROM PLANTER BOXES FILLED WITH SHRUBS, GROUNDCOVERS AND CASCADING SPECIES

LEGEND

- PROPOSED SHRUB AND LOW LEVEL PLANTING
- PROPOSED GROUNDCOVER PLANTING
- PROPOSED CASCADING SPECIES
- PAVED AREA - REFER ARCHITECTS DRGS FOR DETAILS
- BUILDING LINE OVER
- PROPERTY BOUNDARY

BCC DS
RECEIVED
 24/06/2026
APPLICATION REF
 A006915607

NOTES

- 1. REFER TO DRG 2510-018-SK030 FOR PLANT SPECIES SCHEDULE, IMAGES AND GENERAL NOTES
- 2. REFER ARCHITECTS DRGS FOR ALL FENCE DETAILS
- 3. REFER CIVIL ENGINEERS DRGS FOR ALL RETAINING WALL DETAILS

PRELIMINARY

rev	description	drawn	date
C	REVISED ISSUE	MS	23.06.26
B	REVISED ISSUE	JM	12.03.26

GD DEVELOPMENTS ONE PTY TD
 12-16 RYLATT STREET, INDOOROOPILLY
LANDSCAPE CONCEPT PLAN
PLANTING PLAN - LEVEL 2

LAUDink
 landscape architecture & urban design
 Office 7, 915 Ann Street, Fortitude Valley, QLD 4006
 E: elaas@laudink.com.au / jane@laudink.com.au
 W: www.laudink.com.au
 ABN 80 169 838 144

SCALE 1:200 AT ORIGINAL SIZE

Conditions of Use: This document may only be used by LAUDink's client (and any other person who LAUDink has agreed can use this document) for the purpose for which it was prepared and must not be used by any other person or for any other purpose.

scale 1:200 for A1 job no. 2510-018
 date JUN 2026 rev no. C

approved E. NICHOLAOU* SK004



PLAN
SCALE 1:200

ANNOTATION NOTES

- 1 CASCADING SPECIES APT cor AND DIC SF TO BE POSITIONED AT EDGE OF PLANTER TO PROVIDE VISUAL AMENITY AND SOFTEN BUILDING FACADE
- 2 LEVELS BELOW PLANTING PLANS - REFER TO DRG 2510-018-SK002 - 2510-018-SK003 - 2510-018-SK004 FOR DETAILS

LEGEND

- PROPOSED SHRUB AND LOW LEVEL PLANTING
- PROPOSED GROUNDCOVER PLANTING
- PROPOSED CASCADING SPECIES
- PAVED AREA - REFER ARCHITECTS DRGS FOR DETAILS
- BUILDING LINE OVER
- PROPERTY BOUNDARY

BCC DS
RECEIVED
 24/06/2026
APPLICATION REF
 A006915607

NOTES

- 1. REFER TO DRG 2510-018-SK030 FOR PLANT SPECIES SCHEDULE, IMAGES AND GENERAL NOTES
- 2. REFER ARCHITECTS DRGS FOR ALL FENCE DETAILS
- 3. REFER CIVIL ENGINEERS DRGS FOR ALL RETAINING WALL DETAILS

PRELIMINARY

rev	description	drawn	date
C	REVISED ISSUE	MS	23.06.26
B	REVISED ISSUE	JM	12.03.26

GD DEVELOPMENTS ONE PTY TD
 12-16 RYLATT STREET, INDOOROOPILLY
LANDSCAPE CONCEPT PLAN
PLANTING PLAN - LEVEL 3

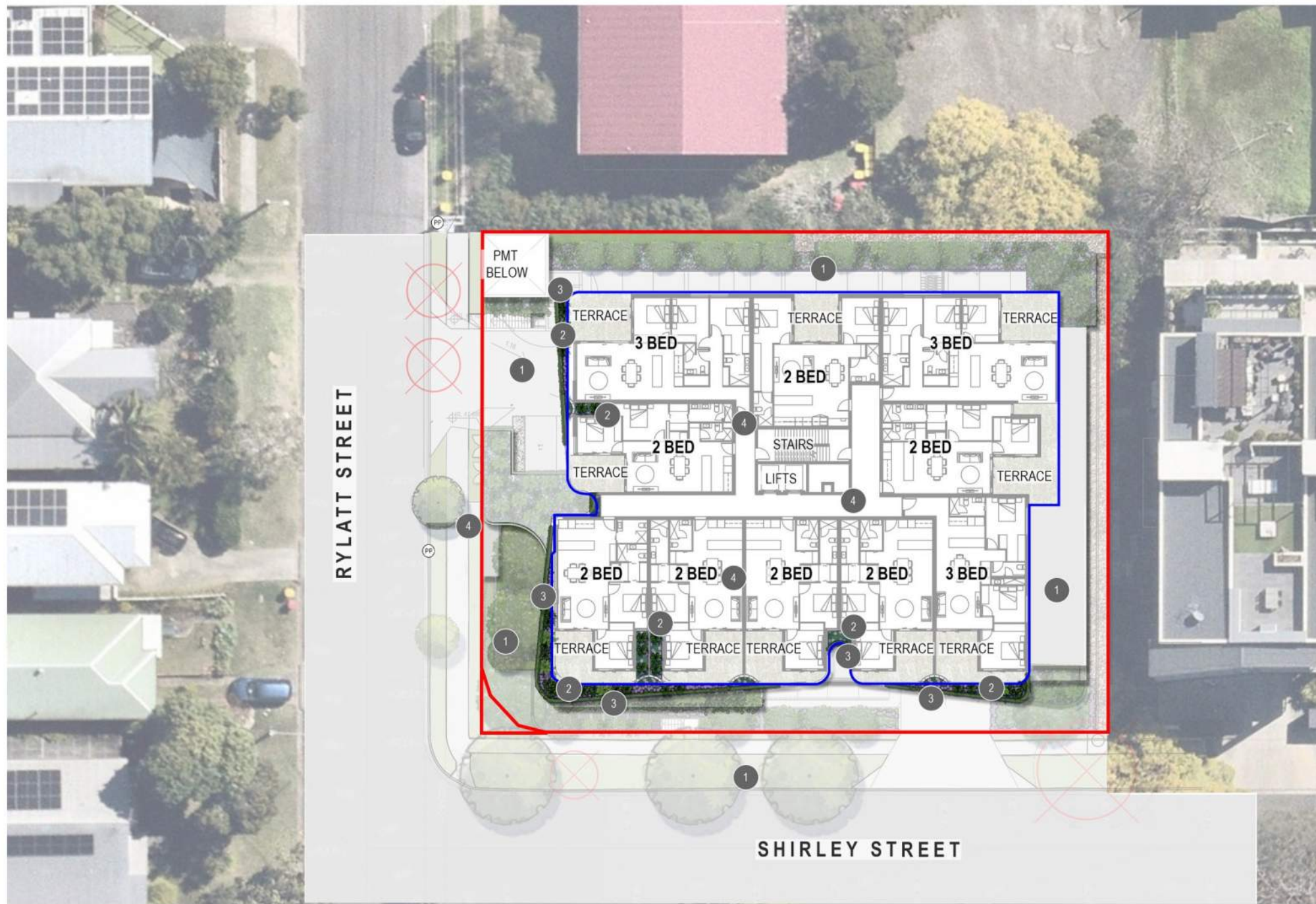
LAUDink
 landscape architecture & urban design
 Office 7, 915 Ann Street, Fortitude Valley, QLD 4006
 E: elias@laudink.com.au / jane@laudink.com.au
 W: www.laudink.com.au
 ABN 80 169 838 144

SCALE 1:200 AT ORIGINAL SIZE







Conditions of Use: This document may only be used by LAUDink's client (and any other person who LAUDink has agreed can use this document) for the purpose for which it was prepared and must not be used by any other person or for any other purpose.

scale 1:200 for A1 job no. 2510-018
 date JUN 2026 rev no. C

approved E. NICHOLAOU* SK005



LEGEND

-  PROPOSED SHRUB AND LOW LEVEL PLANTING
-  PROPOSED GROUNDCOVER PLANTING
-  PROPOSED CASADING SPECIES
-  PAVED AREA - REFER ARCHITECTS DRGS FOR DETAILS
-  BUILDING LINE OVER
-  PROPERTY BOUNDARY

**BCC DS
 RECEIVED
 24/06/2026
 APPLICATION REF
 A006915607**

PLAN
SCALE 1:200

ANNOTATION NOTES

- 1 LEVELS BELOW PLANTING PLANS - REFER TO DRG 2510-018-SK002 - 2510-018-SK004 FOR DETAILS
- 2 LEVEL 2 TERRACE PLANTERS TO PROVIDE VISUAL AMENITY AND SOFTEN BUILDING FACADE. PLANTER TO FEATURE SHRUBS LAV den, PHI XAN AND ROS off WITH GROUNDCOVERS DIE gra AND GAZ tom
- 3 CASCADING SPECIES APT cor AND DIC SF TO BE POSITIONED AT EDGE OF PLANTER TO PROVIDE VISUAL AMENITY AND SOFTEN BUILDING FACADE
- 4 REFER TO ARCHITECT'S DRAWINGS FOR ALL INTERNAL DETAILS

NOTES

- 1. REFER TO DRG 2510-018-SK030 FOR PLANT SPECIES SCHEDULE, IMAGES AND GENERAL NOTES
- 2. REFER ARCHITECTS DRGS FOR ALL FENCE DETAILS
- 3. REFER CIVIL ENGINEERS DRGS FOR ALL RETAINING WALL DETAILS


PRELIMINARY

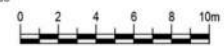
C	REVISED ISSUE	MS	23.06.26
B	REVISED ISSUE	JM	12.03.26
rev	description	drawn	date

GD DEVELOPMENTS ONE PTY TD
 12-16 RYLATT STREET, INDOOROOPILLY
LANDSCAPE CONCEPT PLAN
PLANTING PLAN - LEVEL 4

LAUDink
 landscape architecture & urban design

Office 7, 915 Ann Street, Fortitude Valley, QLD 4006
 E: eleeas@laudink.com.au / jane@laudink.com.au
 W: www.laudink.com.au
 ABN 80 169 838 144



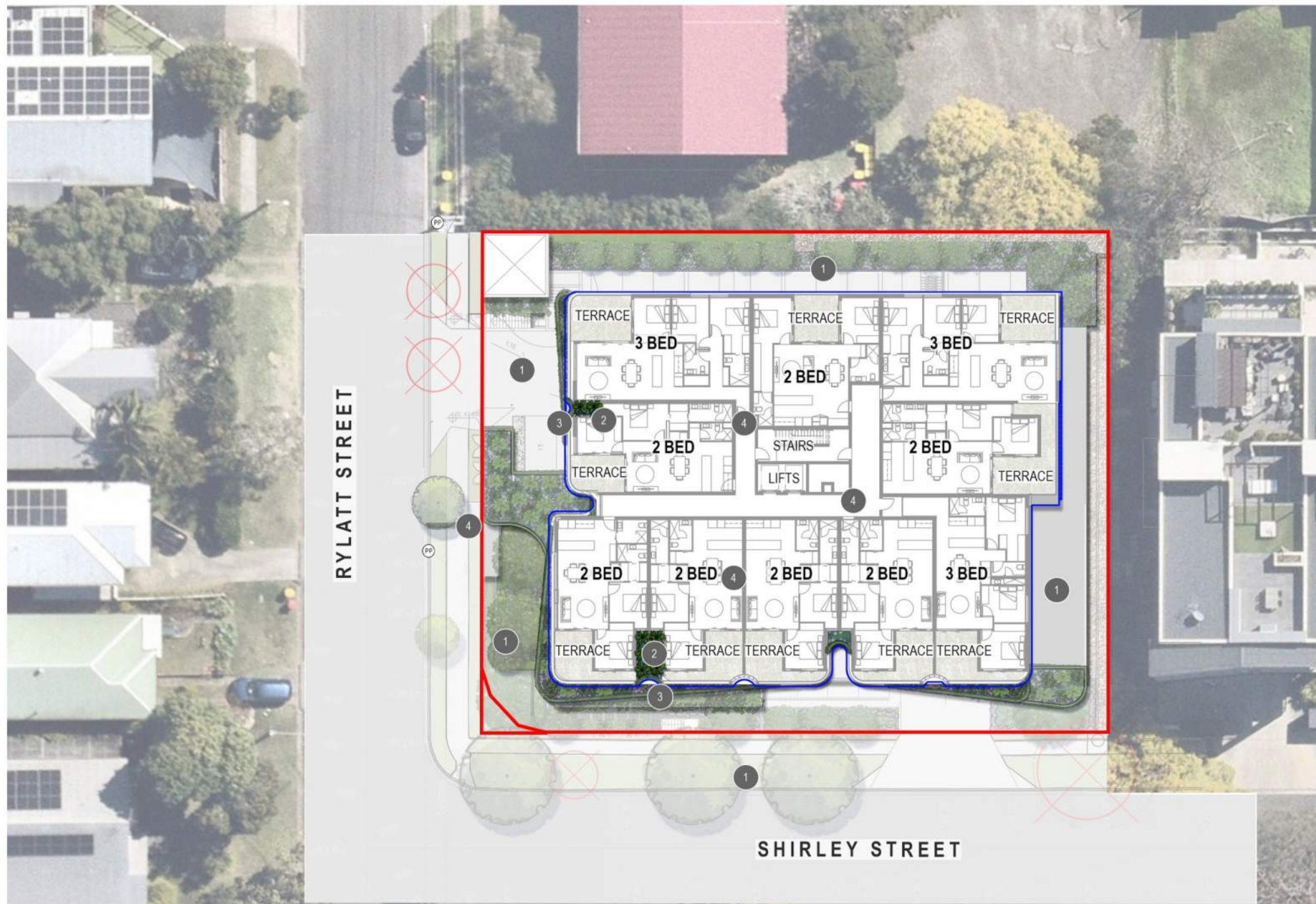


SCALE 1:200 AT ORIGINAL SIZE

Conditions of Use: This document may only be used by LAUDink's client (and any other person who LAUDink has agreed can use this document) for the purpose for which it was prepared and must not be used by any other person or for any other purpose.

scale 1:200 for A1 job no. 2510-018
 date JUN 2026 rev no. C

approved E. NICHOLAOU* **SK006**



- LEGEND**
- PROPOSED SHRUB AND LOW LEVEL PLANTING
 - PROPOSED GROUNDCOVER PLANTING
 - PROPOSED CASADING SPECIES
 - PAVED AREA - REFER ARCHITECTS DRGS FOR DETAILS
 - BUILDING LINE OVER
 - PROPERTY BOUNDARY

BCC DS
RECEIVED
 24/06/2026
APPLICATION REF
 A006915607

PLAN
SCALE 1:200

ANNOTATION NOTES

- 1 LEVELS BELOW PLANTING PLANS - REFER TO DRG 2510-018-SK002 - 2510-018-SK005 FOR DETAILS
- 2 LEVEL 5 - 9 PLANTERS TO PROVIDE VISUAL AMENITY AND SOFTEN BUILDING FACADE. PLANTER TO FEATURE LOW MAINTENANCE GROUNDCOVERS AS PER PLANT SPECIES SCHEDULE ON DRG 2510-018-SK030
- 3 CASCADING SPECIES APT cor AND DIC SF TO BE POSITIONED AT EDGE OF PLANTER TO PROVIDE VISUAL AMENITY AND SOFTEN BUILDING FACADE
- 4 REFER TO ARCHITECT'S DRAWINGS FOR ALL INTERNAL DETAILS

NOTES

1. REFER TO DRG 2510-018-SK030 FOR PLANT SPECIES SCHEDULE, IMAGES AND GENERAL NOTES
2. REFER ARCHITECTS DRGS FOR ALL FENCE DETAILS
3. REFER CIVIL ENGINEERS DRGS FOR ALL RETAINING WALL DETAILS

PRELIMINARY

rev	description	drawn	date
C	REVISED ISSUE	MS	23.06.26
B	REVISED ISSUE	JM	12.03.26

GD DEVELOPMENTS ONE PTY TD
 12-16 RYLATT STREET, INDOOROOPILLY
LANDSCAPE CONCEPT PLAN
PLANTING PLAN - LEVELS 5-9 TYPICAL

LAUDink
 landscape architecture & urban design

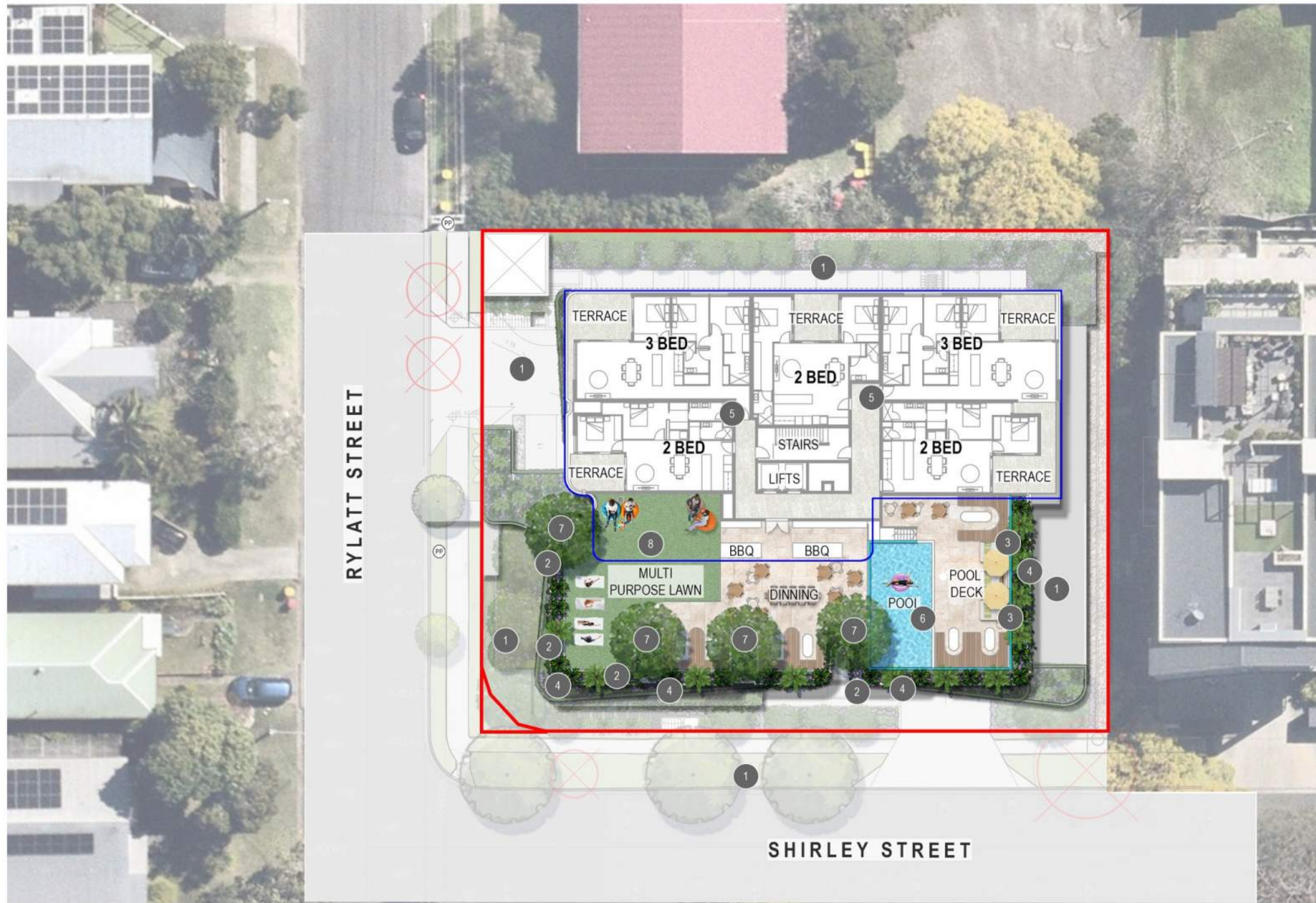
Office 7, 915 Ann Street, Fortitude Valley, QLD 4006
 E: elaas@laudink.com.au / jane@laudink.com.au
 W: www.laudink.com.au

ASIN 80 169 838 144

SCALE 1:200 AT ORIGINAL SIZE

Conditions of Use: This document may only be used by LAUDink's client (and any other person who LAUDink has agreed can use this document) for the purpose for which it was prepared and must not be used by any other person or for any other purpose.

scale 1:200 for A1 job no. 2510-018
 date JUN 2026 rev no. C
 approved E. NICHOLAOU* **SK007**



PLAN
SCALE 1:200

ANNOTATION NOTES

- 1 LEVELS BELOW PLANTING PLANS - REFER TO DRG 2510-018-SK002 - 2510-018-SK006 FOR DETAILS
- 2 ROOFTOP PLANTER TO FEATURE SUN TOLERANT SHRUBS AND GROUNDCOVERS AS PER PLANT SPECIES SCHEDULE ON DRG 2510-018-SK030
- 3 POOL DECK PLANTERS TO FEATURE TROPICAL SHRUBS AND GROUNDCOVERS AS PER PLANT SPECIES SCHEDULE ON DRG 2510-018-SK030
- 4 CASCADING SPECIES APT cor AND DIC SF TO BE POSITIONED AT EDGE OF PLANTER TO PROVIDE VISUAL AMENITY AND SOFTEN BUILDING FACADE
- 5 REFER TO ARCHITECT'S DRAWINGS FOR ALL INTERNAL DETAILS
- 6 REFER TO ARCHITECT'S DRAWINGS FOR ALL FENCING AND BALUSTRADE DETAILS
- 7 SHADE TREE RAN fit TO PROVIDE SHADE AND VISUAL AMENITY TO DINING AND POOL DECK AREA. TREES TO BE UNDERPLANTED WITH A COMBINATION OF LOW MAINTENANCE SHRUBS AND GROUNDCOVERS AS PER PLANT SPECIES SCHEDULE ON DRG 2510-018-SK030
- 8 MULTI PURPOSE SYNTHETIC TURF LAWN TO ALLOW FOR ACTIVE RECREATION E.G. YOGA, PILATES, TAI CHI AND A MIXED USE COMMUNAL OPEN SPACE OFFERING. SYNTHETIC TURF IS PARTIALLY COVERED BY ROOF OVER AND SHADED BY REQUESTED SHADE TREES PROVIDED. REAL TURF IS NOT SUITABLE - WILL FAIL AND IS AN UNCESSARY MAINTENANCE BURDEN ON THE DEVELOPER

CHARACTER REFERENCE IMAGES



01 INDICATIVE IMAGERY OF 1500mm HIGH GLASS POOL FENCE.GATES TO MATCH

LEGEND

- PROPOSED SHADE TREE
- PROPOSED SHRUB AND LOW LEVEL PLANTING
- PROPOSED GROUNDCOVER PLANTING
- PROPOSED CASCADING SPECIES
- PROPOSED SYNTHETIC TURF
- PAVED AREA - REFER ARCHITECTS DRGS FOR DETAILS
- BUILDING LINE OVER
- PROPERTY BOUNDARY

BCC DS
RECEIVED
 24/06/2026
APPLICATION REF
 A006915607

NOTES

- 1. REFER TO DRG 2510-018-SK030 FOR PLANT SPECIES SCHEDULE, IMAGES AND GENERAL NOTES
- 2. REFER ARCHITECTS DRGS FOR ALL FENCE DETAILS
- 3. REFER CIVIL ENGINEERS DRGS FOR ALL RETAINING WALL DETAILS

PRELIMINARY

rev	description	drawn	date
C	REVISED ISSUE	MS	23.06.26
B	REVISED ISSUE	JM	12.03.26

GD DEVELOPMENTS ONE PTY TD
 12-16 RYLATT STREET, INDOOROOPILLY
LANDSCAPE CONCEPT PLAN
 PLANTING PLAN - LEVEL 10 ROOFTOP TERRACE

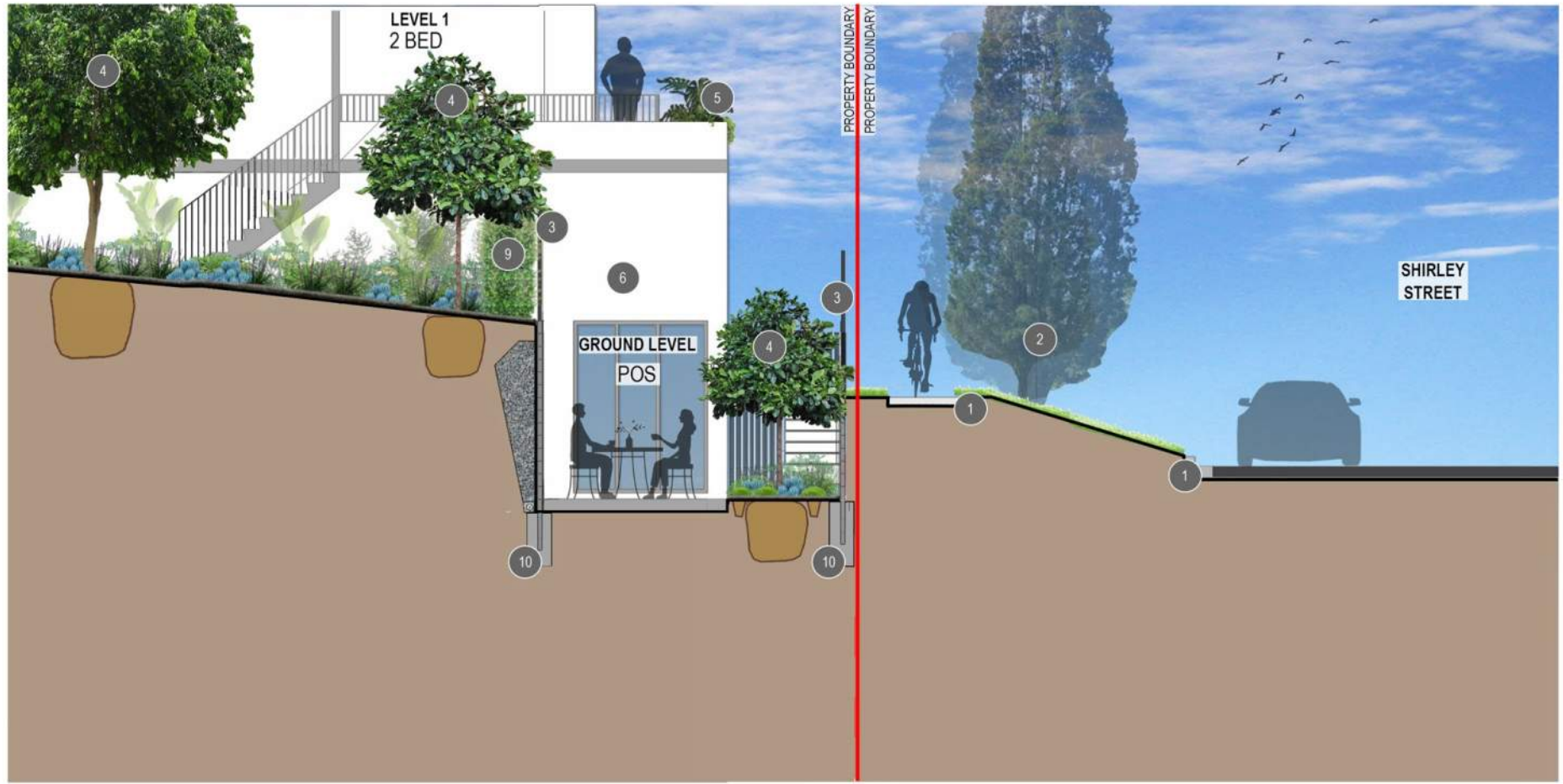
LAUDink
 landscape architecture & urban design
 Office 7, 915 Ann Street, Fortitude Valley, QLD 4006
 E: elaas@laudink.com.au / jane@laudink.com.au
 W: www.laudink.com.au
 ABN 80 169 838 144

SCALE 1:200 AT ORIGINAL SIZE

Conditions of Use: This document may only be used by LAUDink's client (and any other person who LAUDink has agreed can use this document) for the purpose for which it was prepared and must not be used by any other person or for any other purpose.

scale 1:200 for A1 job no. 2510-018
 date JUN 2026 rev no. C

approved E. NICHOLAOU* **SK008**

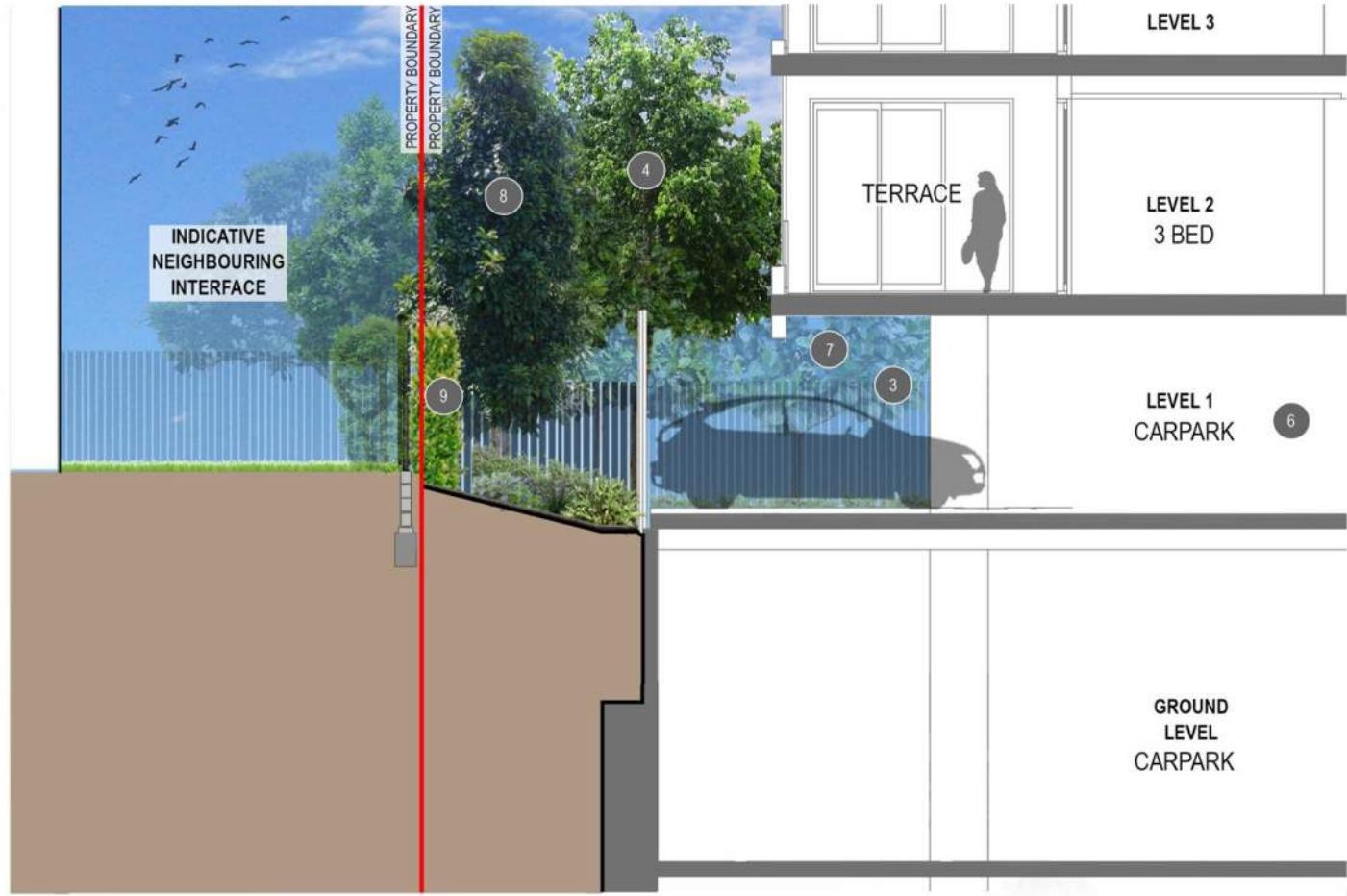


SECTION A
SCALE 1:50



KEY PLAN
NTS

**BCC DS
RECEIVED**
 24/06/2026
APPLICATION REF
 A006915607



SECTION B
SCALE 1:50

ANNOTATION NOTES

1. EXISTING STREETScape DESIGN TO BE RETAINED. MAKE GOOD IF DAMAGED DURING CONSTRUCTION
2. EXISTING MATURE STREET TREES CALLITRIS columellaris (BRIBIE ISLAND PINE) ON SHIRLEY STREET FRONTAGE TO BE RETAINED. SUBJECT TO ARBORIST'S REPORT AND CONFIRMATION ON-SITE
3. REFER ARCHITECTS DRGS FOR ALL FENCE DETAILS
4. FEATURE SHADE TREES RAN fit AND WAT flo TO PROVIDE AMENITY. TREES TO BE UNDERPLANTED WITH SHRUBS ASP ela, PHI XAN AND PIT MM WITH GROUNDCOVERS AGA afr (W), LIR EG, SEN man AND ZOY ten
5. LEVEL 1 TERRACE PLANTERS TO PROVIDE VISUAL AMENITY AND SOFTEN BUILDING FACADE. PLANTER TO FEATURE SHRUBS CRA ova, MON del AND PHI CON WITH GROUNDCOVERS KAL thy, SEN man, VIO hed AND ZOY ten
6. REFER TO ARCHITECT'S DRAWINGS FOR ALL INTERNAL DETAILS
7. SHADE TREES RAN fit TO PROVIDE AMENITY AND SCREENING TO REAR BOUNDARY INTERFACE DEEP PLANTING ZONE. TREES TO BE UNDERPLANTED WITH SHRUBS AND GROUNDCOVERS AS PER PLANT SPECIES SCHEDULE ON DRG 2510-018-SK030
8. COLUMNAR TREES ELA eum TO PROVIDE SCREENING TO BOUNDARY INTERFACE AND SOFTEN CARPARK HARDSTANDS. TREES TO BE UNDERPLANTED WITH SHRUBS ASP ela, PHI XAN AND PIT MM WITH GROUNDCOVERS AGA afr (W), LIR EG, SEN man AND ZOY ten
9. BUFFERING SHRUB SYZ RES TO SCREEN BOUNDARY INTERFACE AND FENCE FRONTAGE
10. INDICATIVE RETAINING WALLS AND FOOTINGS - REFER TO CIVIL ENGINEERS DRGS FOR DETAILS

NOTES

1. REFER TO DRAWING 2510-018-SK030 FOR PLANT SPECIES SCHEDULE, IMAGES GENERAL NOTES
2. REFER TO 2510-018-SK002 - 2510-018-SK008 FOR PROPOSED PLANTING DESIGNS
3. REFER TO CIVIL ENGINEERS DRGS FOR SITE LEVELS & RETAINING WALL DETAILS
4. REFER TO ARCHITECT'S DRAWINGS FOR ALL FENCING DETAILS

PRELIMINARY

rev	description	drawn	date
C	REVISED ISSUE	MS	23.06.26
B	REVISED ISSUE	JM	12.03.26

GD DEVELOPMENTS ONE PTY TD
 12-16 RYLATT STREET, INDOOROOPILLY
LANDSCAPE CONCEPT PLAN
 SECTIONS - SHEET 1

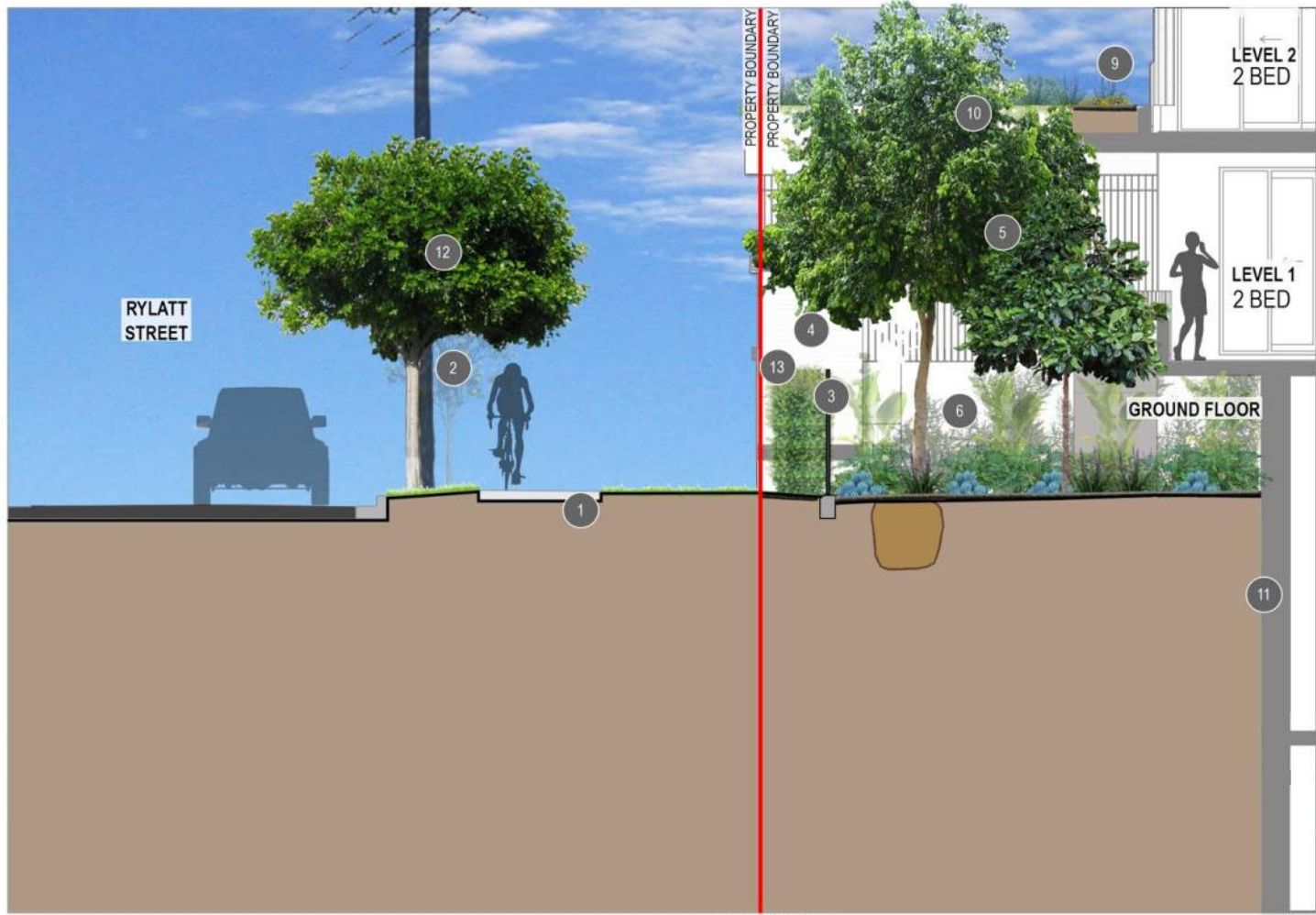
LAUDink
 landscape architecture & urban design
 Office 7, 915 Ann Street, Fortitude Valley, QLD 4006
 E elias@laudink.com.au / jane@laudink.com.au
 W www.laudink.com.au
 ABN 80 169 838 144

SCALE 1:50 AT ORIGINAL SIZE

Conditions of Use: This document may only be used by LAUDink's client (and any other person who LAUDink has agreed can use this document) for the purpose for which it was prepared and must not be used by any other person or for any other purpose.

scale 1:50 for A1 job no. 2510-018
 date JUN 2026 rev no. C

approved E. NICHOLAOU* SK010



SECTION C
SCALE 1:50



SECTION D
SCALE 1:50

ANNOTATION NOTES

- 1 EXISTING STREETScape DESIGN TO BE RETAINED. MAKE GOOD IF DAMAGED DURING CONSTRUCTION
- 2 EXISTING MATURE STREET TREES CALLITRIS columellaris (BRIBIE ISLAND PINE) ON SHIRLEY & XANTHOSTEMON chrysanthus (GOLDEN PENDA) ON RYLATT STREET FRONTAGES TO BE RETAINED. SUBJECT TO ARBORIST'S REPORT AND CONFIRMATION ON-SITE
- 3 REFER ARCHITECTS DRGS FOR ALL FENCE DETAILS
- 4 PROPOSED GAS AND WATER METER LOCATION BEHIND
- 5 FEATURE SHADE TREES RAN fit AND WAT flo TO PROVIDE AMENITY. TREES TO BE UNDERPLANTED WITH SHRUBS ASP ela, PHI XAN AND PIT MM WITH GROUNDCOVERS AGA afr (W), LIR EG, SEN man AND ZOY ten
- 6 CLIMBING SPECIES FIC pum TO BE TRAINED TO WALL AND PROIDE SOFTENING TO BUILDING INTERFACE
- 7 COLUMNAR TREES ELA eum TO PROVIDE SHADED AMENITY AND SOFTEN HARDSTAND. TREES TO BE UNDERPLANTED WITH SHRUBS AND GROUNDCOVERS AS PER PLANT SPECIES SCHEDULE ON DRG 2510-018-SK030
- 8 LEVEL 1 TERRACE PLANTERS TO PROVIDE VISUAL AMENITY AND SOFTEN BUILDING FACADE. PLANTER TO FEATURE SHRUBS CRA ova, MON del AND PHI CON WITH GROUNDCOVERS KAL thy, SEN man, VIO hed AND ZOY ten
- 9 FEATURE ENTRY PLANTERS TO PROVIDE VISUAL AMENITY AND SOFTEN RYLATT STREET FRONTAGE AND BUILDING HARDSTAND. PLANTERS TO BE FEATURE A COMBINATION OF SHADE AND SUN TOLERANT SHRUBS AND GROUNDCOVERS AS PER PLANT SPECIES SCHEDULE ON DRG 2510-018-SK030
- 10 CASCADING SPECIES APT cor AND DIC SF TO BE POSITIONED AT EDGE OF PLANTER TO PROVIDE VISUAL AMENITY AND SOFTEN BUILDING FACADE.
- 11 REFER TO CIVIL, STRUCTURAL AND ARCHITECTURAL DRGS FOR BASEMENT WALL DETAILS
- 12 PROPOSED STREET TREE CUP ana TO PROVIDE STREETScape AMENITY AND SOFTEN RYLATT STREET FRONTAGE. TREE TO BE PLANTED IN ACCORDANCE WITH BCC STANDARD DRAWINGS FOR BCC INFRASTRUCTURE DESIGN PLANNING SCHEME POLICY 6 SC6.16-3 ROAD CORRIDOR DESIGN- NEIGHBOURHOOD STREETS (TYPE NIEGHBOURHOOD STREET MAJOR-NS1)
- 13 BUFFERING SHRUBS RES SYZ TO BE USED ALONG FENCE FRONTAGE WITH GROUNDCOVERS TO PROVIDE VISUAL AMENITY



KEY PLAN
NTS

**BCC DS
RECEIVED**
 24/06/2026
APPLICATION REF
 A006915607

NOTES

1. REFER TO DRAWING 2510-018-SK030 FOR PLANT SPECIES SCHEDULE, IMAGES GENERAL NOTES
2. REFER TO 2510-018-SK002 - 2510-018-SK008 FOR PROPOSED PLANTING DESIGNS
3. REFER TO CIVIL ENGINEERS DRGS FOR SITE LEVELS & RETAINING WALL DETAILS
4. REFER TO ARCHITECT'S DRAWINGS FOR ALL FENCING DETAILS

PRELIMINARY

rev	description	drawn	date
C	REVISED ISSUE	MS	23.06.26
B	REVISED ISSUE	JM	12.03.26

GD DEVELOPMENTS ONE PTY TD
 12-16 RYLATT STREET, INDOOROOPILLY
 LANDSCAPE CONCEPT PLAN
 SECTIONS - SHEET 2

LAUD ink
 landscape architecture & urban design
 Office 7, 915 Ann Street, Fortitude Valley, QLD 4006
 E: eleas@laudink.com.au / jane@laudink.com.au
 W: www.laudink.com.au
 ABN 80 169 838 144

SCALE 1:50 AT ORIGINAL SIZE

Conditions of Use: This document may only be used by LAUD ink's client (and any other person who LAUD ink has agreed can use this document) for the purpose for which it was prepared and must not be used by any other person or for any other purpose.

scale 1:50 for A1 job no. 2510-018
 date JUN 2026 rev no. C

approved E. NICHOLAOU* SK011

RYLATT STREET



SHIRLEY STREET

GROUND FLOOR
SCALE 1:300

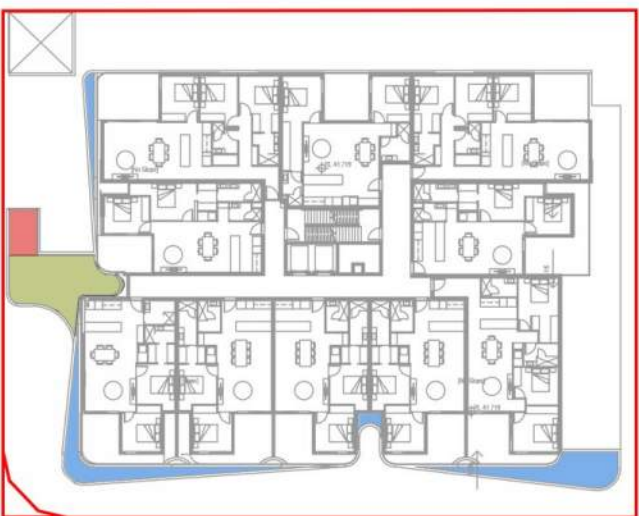
RYLATT STREET



SHIRLEY STREET

LEVEL 1
SCALE 1:300

RYLATT STREET



SHIRLEY STREET

LEVEL 2
SCALE 1:300

RYLATT STREET



SHIRLEY STREET

LEVEL 3
SCALE 1:300

LEGEND

- 400mm DEEP PLANTER
- 600mm DEEP PLANTER
- 800mm DEEP PLANTER
- 1000mm DEEP PLANTER
- DEEP PLANTING
- MIN. 3000mm DEEP PLANTING ZONE (BASEMENT 2 BELOW)
- PLANTING IN NATURAL GROUND
- PROPERTY BOUNDARY

BCC DS
RECEIVED
24/06/2026
APPLICATION REF
A006915607

NOTES

1. REFER TO DRGS 2510-018-SK002-SK007 FOR PROPOSED PLANTING PLAN DESIGNS
2. REFER TO DRG 2510-018-SK030 FOR PLANT SPECIES SCHEDULE, IMAGES AND GENERAL NOTES

PRELIMINARY

rev	description	drawn	date
C	REVISED ISSUE	MS	23.06.26
B	REVISED ISSUE	JM	12.03.26

GD DEVELOPMENTS ONE PTY TD
12-16 RYLATT STREET, INDOOROOPILLY
LANDSCAPE CONCEPT PLAN
PLANTER DEPTH SUMMARY DIAGRAMS - SHEET 1

LAUDink
landscape architecture & urban design

Office 7, 915 Ann Street, Fortitude Valley, QLD 4006
E: elee@laudink.com.au / jane@laudink.com.au
W: www.laudink.com.au

ABN 80 169 838 144

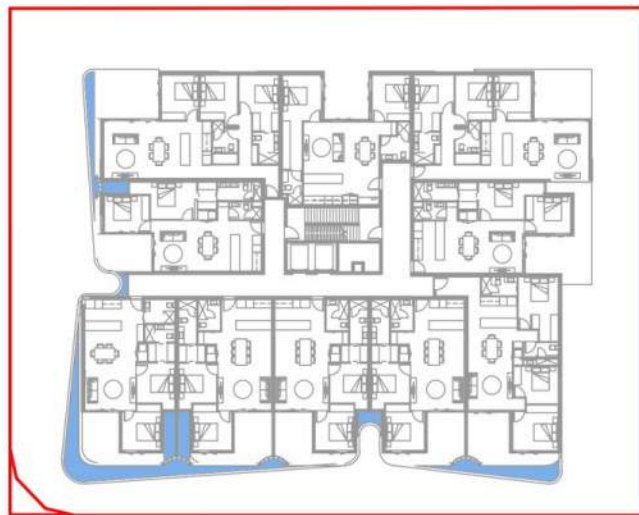
SCALE 1:300 AT ORIGINAL SIZE

Conditions of Use: This document may only be used by LAUDink's client (and any other person who LAUDink has agreed can use this document) for the purpose for which it was prepared and must not be used by any other person or for any other purpose.

scale | 1:300 for A1 job no. | 2510-018
date | JUN 2026 rev no. | C

approved | E. NICHOLAOU* SK020

RYLATT STREET



SHIRLEY STREET

LEVEL 4
SCALE 1:300

RYLATT STREET



SHIRLEY STREET

LEVELS 5-9 TYPICAL
SCALE 1:300

RYLATT STREET



SHIRLEY STREET

LEVEL 10 ROOFTOP TERRACE
SCALE 1:300

LEGEND

- 400mm DEEP PLANTER
- 500mm DEEP PLANTER
- 12000mm DEE PLANTER
- PROPERTY BOUNDARY

BCC DS
RECEIVED
 24/06/2026
APPLICATION REF
 A006915607

NOTES

1. REFER TO DRGS 2510-018-SK002-SK007 FOR PROPOSED PLANTING PLAN DESIGNS
2. REFER TO DRG 2510-018-SK030 FOR PLANT SPECIES SCHEDULE, IMAGES AND GENERAL NOTES

PRELIMINARY

rev	description	drawn	date
C	REVISED ISSUE	MS	23.06.26
B	REVISED ISSUE	JM	12.03.26

GD DEVELOPMENTS ONE PTY TD
 12-16 RYLATT STREET, INDOOROOPIILLY
LANDSCAPE CONCEPT PLAN
 PLANTER DEPTH SUMMARY DIAGRAMS - SHEET 2

LAUDink
 landscape architecture & urban design

Office 7, 915 Ann Street, Fortitude Valley, QLD 4006
 E: elee@laudink.com.au / jane@laudink.com.au
 W: www.laudink.com.au

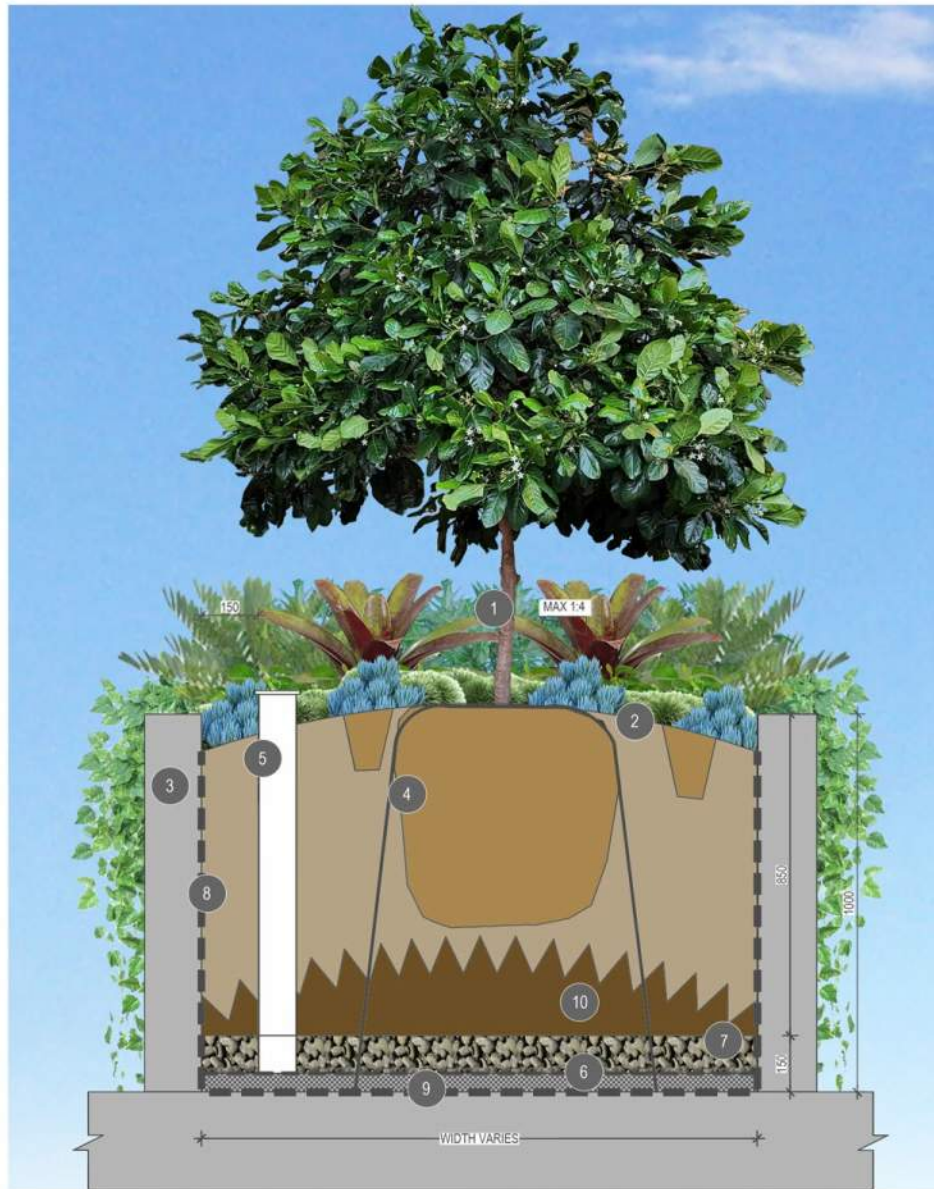
AIN 80 169 838 144

SCALE 1:300 AT ORIGINAL SIZE

Conditions of Use: This document may only be used by LAUDink's client (and any other person who LAUDink has agreed can use this document) for the purpose for which it was prepared and must not be used by any other person or for any other purpose.

scale | 1:300 for A1 job no. | 2510-018
 date | JUN 2026 rev no. | C

approved | E. NICHOLAOU* SK021



TYPICAL TREE IN PODIUM DETAIL
(MIN. 1000mm DEEP)
SCALE 1:10



TYPICAL SHRUBS IN PODIUM DETAIL
(MIN. 800mm DEEP)
SCALE 1:10

PODIUM PLANTER NOTES

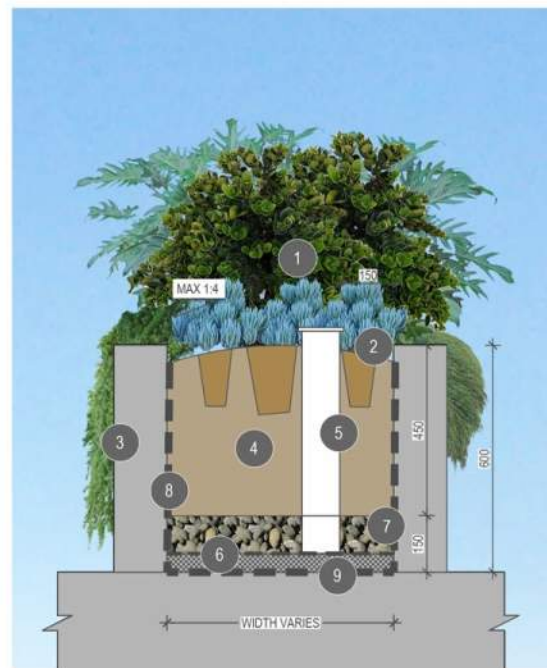
1. SOILS FOR PODIUM PLANTING SHALL BE MINERAL BASED WITH LOW ORGANIC MATTER AND SHALL COMPLY WITH TABLE 2 OF AS 4419-2018 SOILS FOR LANDSCAPING AND GARDEN USE FOR LOW DENSITY MEDIA (ON SLAB), EXCEPT THAT THE FOLLOWING VALUES SHALL APPLY:
 - 1.1. pH 5-6.5
 - 1.2. PERMEABILITY (cm/hr) 15-45
 - 1.3. WATER HOLDING CAPACITY (% BY MASS) 20-35
 - 1.4. SATURATED BULK DENSITY (kg/l) 1.25MAX
 - 1.5. BULK DENSITY - DRY (kg/l) 0.3-0.8
 - 1.2. HYDRAULIC CONDUCTIVITY (cm/h) 30 - 80
 - 1.3. PLANTING MEDIA ORGANIC MATTER:
 - 1.3.1. TYPE 1 MIX 5-10%
 - 1.3.2. TYPE 2 MIX LESS THAN 5%
2. ALL PODIUM SOILS SHALL BE TESTED TO MEET THE ABOVE REQUIREMENTS AND A CERTIFICATE OF COMPLIANCE SHALL BE SUBMITTED TO THE PROJECT SUPERINTENDENT FOR APPROVAL SEVEN WORKING DAYS PRIOR TO INSTALLATION.
3. PENDING ON THE PLANTER DEPTHS, PODIUM PLANTERS SHALL BE BACKFILLED WITH PLANTING MEDIA -TYPE 2 MIX (MIN. SETTLED DEPTH VARIES) TO BASE OF PLANTER AND PLANTING MEDIA - TYPE 1 MIX TO THE TOP 500mm (SETTLED DEPTH). REFER TO DETAILS
4. ALL PODIUM PLANTERS SHALL BE IRRIGATED
5. REFER TO PODIUM PLANTER DETAILS FOR DIFFERENT COMPONENTS REQUIRED FOR PODIUM PLANTERS SUCH AS;
 - PLANTING MEDIA TYPES DEPTHS, WATERPROOFING, ROOT BARRIER & COREFLUTE (WHERE REQUIRED/SPECIFIED), DRAINAGE CELL, GEOFABRIC, WASHED RIVER SAND LAYER, PVC INSPECTION OPENINGS, TREE ANCHORING SYSTEMS (WHERE REQUIRED/SPECIFIED), AND ANCHOR POINTS & ROPE LINES (FOR FALL ARREST SYSTEMS)
6. PODIUM PLANTER FLOOR SHALL BE SLOPED TO A MINIMUM OF 1:50 FALL TO STORMWATER OUTLET. REFER TO HYDRAULIC DRAWINGS FOR POINT OF CONNECTION.
7. ALL PLANTERS SOIL SHALL BE MOUNDED/CROWN AT CENTRE WITH A MAX GRADIENT OF 1:4
8. SPECIFIED MULCH TO BE SPREAD OVER PLANTER SOIL AND SHALL FINISH 25mm BELOW EDGE OF PLANTER

BCC DS
RECEIVED
24/06/2026
APPLICATION REF
A006915607

INDICATIVE MAINTENANCE ACCESS FOR PODIUM PLANTERS



MAINTENANCE ACCESS DETAILS FOR PODIUM PLANTERS TO BE FINALISED DURING DETAILED DESIGN PHASE . INDICATIVE IMAGES OF TWO MOST COMMON APPROACHES: ROPE ACCESS VIA ROOF AND FALL ARREST SAFETY ANCHORS WITHIN PLANTER BOXES



TYPICAL SHRUBS IN PODIUM DETAIL
(MIN. 600mm DEEP)
SCALE 1:10



TYPICAL SHRUBS IN PODIUM DETAIL
(MIN. 400mm DEEP)
SCALE 1:10

TYPICAL PODIUM PLANTER ANNOTATION

- 1 TREES, FEATURE PLANTING AND GROUNDCOVERS AS SPECIFIED
- 2 100mm DEPTH ORGANIC MULCH LAYER, TO FINISH 25mm BELOW TOP OF ADJACENT WALL WITH PLANTING MEDIA TO BE MOUNDED (MAX GRADE 1:4)
- 3 REFER TO ARCHITECTS PROJECT FINISHES AND FITMENTS SCHEDULE FOR PLANTER WALL FINISHES DETAILS
- 4 PLANTING MEDIA SHALL BE MINERAL BASED WITH LOW ORGANIC MATTER AND SHALL COMPLY WITH TABLE 1, "AS4419-2003" SOILS FOR LANDSCAPING AND GARDEN USE". PLANTING MEDIA MIX 1 TO HAVE 5-10% ORGANIC MATTER
- 5 INSPECTION OPENING - 100 PVC PIPE WITH CAP
- 6 GEOTEXTILE MEMBRANE
- 7 MINIMUM 100mm WASHED COARSE RIVER SAND
- 8 WATER PROOFING MEMBRANE
- 9 30mm DRAINAGE CELL - CONNECTED TO DRAINAGE SYSTEM. REFER TO HYDRAULIC DRAWINGS FOR POINT OF CONNECTION
- 10 PLANTING MEDIA MIX TYPE 2 TO COMPLY WITH THE ABOVE STANDARDS AND TO HAVE AN ORGANIC MATTER LESS THAN 5%



INDICATIVE TYPICAL MAINTENANCE ANCHOR POINT FOR PODIUM PLANTERS
SCALE 1:5

PRELIMINARY

C	REVISED ISSUE	MS	23.06.26
B	REVISED ISSUE	JM	12.03.26
rev	description	drawn	date

GD DEVELOPMENTS ONE PTY TD
12-16 RYLATT STREET, INDOOROOPILLY
LANDSCAPE CONCEPT PLAN
PLANTER DEPTH SUMMARY DETAILS

LAUDink
landscape architecture & urban design
Office 7, 915 Ann Street, Fortitude Valley, QLD 4006
E elias@laudink.com.au / jane@laudink.com.au
W www.laudink.com.au
AS/NZS 169 838 144

SCALE 1:10 AT ORIGINAL SIZE

Conditions of Use: This document may only be used by LAUDink's client (and any other person who LAUDink has agreed can use this document) for the purpose for which it was prepared and must not be used by any other person or for any other purpose.

scale AS SHOWN for A1 job no. 2510-018
date JUN 2026 rev no. C

approved E. NICHOLAOU* SK022

NOTES

1. REFER TO LANDSCAPE CONCEPT PLAN 2510-018-SK002 - 2510-018-SK-007 FOR PROPOSED PLANTING DESIGNS
2. REFER TO CIVIL ENGINEERS DRAWINGS FOR DRIVEWAY AND CROSSOVER DETAILS
3. REFER TO ARCHITECTS DRAWINGS FOR ALL FENCE DETAILS
4. LANDSCAPE DETAILED DESIGN IS TO BE COORDINATED WITH HYDRAULIC AND ENGINEERING DESIGN TO CONFIRM LOCATIONS OF UNDERGROUND SERVICES PRIOR TO CONSTRUCTION
5. LANDSCAPE GENERAL STANDARDS.
 - 5.1 CULTIVATION MINIMUM DEPTH 150mm FOR TURFED AREAS AND PLANTING AREAS
 - 5.2 IMPORTED TOPSOIL TO AS 4419. MINIMUM DEPTHS, GRASSED AREAS (TURF) 100mm, PLANTING AREAS 300mm.
 - 5.3 MULCH TO AS 4454 PROVIDE MULCH WHICH IS FREE OF DELETERIOUS AND EXTRANEIOUS MATTER SUCH AS SOIL, WEEDS AND STICKS.
 - 5.4 STAKE SIZES FOR PLANTS 1-2.5m HEIGHT TWO 50 x 50 x 1800mm STAKES PER PLANT PROVIDE TIES FIXED SECURELY TO THE STAKES, ONE TIE AT HALF THE HEIGHT OF THE MAIN STEM, OTHERS AS NECESSARY TO STABILISE PLANT. FOR PLANTS <2.5m HIGH 50mm HESSIAN WEBBING STAPLED TO THE STAKES.
6. FOR ALL STREETSCAPE WORKS REFER TO THE FOLLOWING BRISBANE CITY COUNCIL STANDARD DRAWINGS FOR LANDSCAPE CONSTRUCTION DETAILS:
 - 6.1 SOFTWORKS:
 - 6.1.1 BSD-9051 PLANTING GENERAL NOTES SHEET 1
 - 6.1.2 BSD-9051 PLANTING GENERAL NOTES SHEET 2
 - 6.1.3 BSD-9052 PLANTING MEDIA PROFILES (TURF AND GARDEN)
 - 6.1.4 BSD-9053 PLANTING - TYPICAL TREE, SHRUB & TUBE STOCK
 - 6.1.5 BSD-9082 ROOT DEFLECTOR INSTALLATION ADJACENT TO EXISTING ROAD AND STRUCTURES
7. ALL BCC STANDARD DRAWINGS ARE TO BE READ IN CONJUNCTION WITH THE FOLLOWING BRISBANE CITY COUNCIL TECHNICAL REFERENCE SPECIFICATIONS:
 - 7.1 S190 LANDSCAPING

PROPOSED PLANT SPECIES SCHEDULE

CODE	PLANT SPECIES	COMMON NAME	CENTRES (mm)	POT SIZE
TREES				
BUC cel	BUCKINGHAMIA celsissima	Ivory Curl	AS SHOWN	25L
CUP ana	CUPANIOPSIS anacardioides	Tuckeroo	AS SHOWN	25L
CYA coo	CYATHEA cooperii	Tree Fern	AS SHOWN	45L
ELA eum	ELAEOCARPUS eumundii	Eumundii Quandong	AS SHOWN	25L
HOW for	HOWEA forsteriana	Kentia Palm	AS SHOWN	45L
LIC gra	LICUALA grandis	Ruffled Fan Palm	AS SHOWN	45L
POL lon	POLYALTHIA longifolia	Indian Mast Tree	AS SHOWN	25L
RAN fit	RANDIA fitzalanii	Native Gardenia	AS SHOWN	25L
TRI LUS	TRISTANIOPSIS laurina 'Luscious'	Luscious	AS SHOWN	25L
WAT flo	WATERHOUSEA floribunda	Weeping Lilly Pilly	AS SHOWN	25L
SHRUBS				
ALO DWA	ALOCASIA calidora 'Dwarf'	Dwarf Elephant Ears	1000mm	300mm
ASP ela	ASPIDISTRA elatior	Cast-Iron Plant	700mm	140mm
CRA ova	CRASSULA ovata	Jade Plant	700mm	200mm
MON del	MONSTERA deliciosa	Swiss Cheese Plant	700mm	200mm
PHI CON	PHILODENDRON 'Congo'	Congo	500mm	200mm
PHI XAN	PHILODENDRON 'Xanadu'	Xanadu	500mm	200mm
PIT MM	PITTOSPORUM 'Miss Muffet'	Miss Muffet Pittosporum	750mm	200mm
RHA exc	RHAPIS excelsa	Lady Palm	750mm	200mm
SAN tri	SANSEVIERIA trifasciata	Mother-in-law's tongue	500mm	140mm
SYZ RES	SYZYGIUM 'Resilience'	Psyllid resistant Lilly Pilly	1000mm	300mm
VIB odo	VIBURNUM odoratissimum	Sweet viburnum	1000mm	200mm
WES ZEN	WESTRINGIA fruticosa 'Zena'	Dwarf Westringia	500mm	200mm
GROUND COVERS				
AGA afr (W)	AGAPANTHUS africanus	White African Lily	500mm	140mm
APT cor	APTENIA cordifolia	Baby Sunrose	400mm	140mm
DIC SF	DICHONDRA 'Silver Falls'	Silver Falls	500mm	140mm
KAL thy	KALANCHOE thyrsiflora	Flap Jack Kalanchoe	300mm	140mm
LIR EG	LIRIOPE muscari 'Evergreen Giant'	Evergreen Giant	500mm	140mm
LOM lon	LOMANDRA longifolia	Mat Rush	750mm	140mm
LOM LT	LOMANDRA 'Lime Tuff'	Lime Tuff Lomandra	400mm	140mm
OPH jap	OPHIPOGON japonicus	Mondo Grass	300mm	140mm
SEN blu	SENECIO mandraliscae	Blue Chalk Sticks	300mm	140mm
SPA PL	SPATHIPHYLLUM	Peace Lily	500mm	300mm
VIO hed	VIOLA hederacea	Native Violet	300mm	140mm
ZOY ten	ZOYSIA tenuifolia	Korean Velvet Grass	250mm	140mm
CLIMBERS				
CIS ant	CISSUS antarctica	Kangaroo Vine	500mm	140mm
EPI aur	EPIPREMNUM aureum	Devil's Ivy	500mm	300mm
FIC pum	FICUS pumila	Creeping Fig	AS SHOWN	140mm
TURF				
TURF	CYNODON dactylon	Green Couch		

PROPOSED TREES



PROPOSED SHRUBS



PROPOSED GROUNDCOVERS AND CLIMBERS



PRELIMINARY

rev	description	drawn	date
C	REVISED ISSUE	MS	23.06.26
B	REVISED ISSUE	JM	12.03.26

GD DEVELOPMENTS ONE PTY TD
12-16 RYLATT STREET, INDOOROOPILLY
LANDSCAPE CONCEPT PLAN
PLANT SPECIES SCHEDULE, IMAGES & NOTES



Conditions of Use: This document may only be used by LAUDink's client (and any other person who LAUDink has agreed can use this document) for the purpose for which it was prepared and must not be used by any other person or for any other purpose.

scale NTS for A1 job no. 2510-018
date JUN 2026 rev no. C

approved E. NICHOLAOU* SK030

CHARACTER REFERENCE IMAGES

GROUND LEVEL PLANTING INTENT

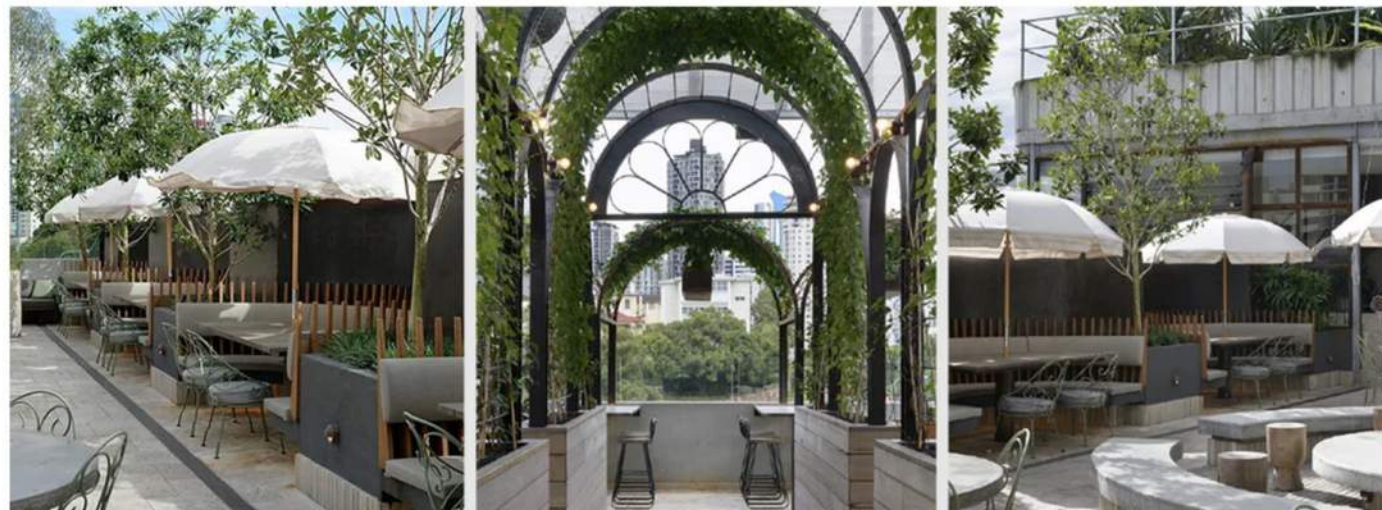


TROPICAL LUSH PLANTING SPECIES WITH VARIED TEXTURES AND COLOURS IN DEEP PLANTING ZONES



FRONTAGE OF BUILDING WITH CASCADING PLANTS FROM PLANTER BOXES FILLED WITH SHRUBS, GROUNDCOVERS AND CASCADING SPECIES

BRISBANE BASED EXAMPLE PROJECTS OF INSTALLED WORK IN COMPARABLE CONTEXT AND CLIMATE



VALELY HOPS (FORTITUDE VALLEY) PLANTING INTENT - A COMBINATION OF TREES, SHRUBS, GROUNDCOVERS AND CLIMBING SPECIES



TREE HOUSE (SOUTH BRISBANE) - VERTICAL GREENING AND FACADE SOFTENING

MAISON (NEW FARM) - VERTICAL GREENING AND FACADE SOFTENING

AMIRA RESIDENCES (EAST BRISBANE) - VERTICAL GREENING AND FACADE SOFTENING

ROOFTOP TERRACE PLANTING INTENT



MULTI-PURPOSE LAWN TO ALLOW FOR RECREATIONAL ACTIVITIES

A COMBINATION OF SUN-TOLERANT SHRUBS AND GROUNDCOVERS TO PROVIDE VISUAL AMENITY AND SOFTEN BUILDING FACADE

ROOFTOP POOL ELEMENTS



AWNINGS / PERGOLAS

BOOTH SEATING WITH LANDSCAPED DIVIDERS

COMMUNAL BBQ AND AREA FOR RECREATION AND SOCIALISATION



POOL DECK WITH SUN LOUNGES

INTERNAL DINING / WORK FROM HOME / RECREATION SPACES OPENING ONTO ROOF TERRACE

PODIUM PLANTING INTENT



BUILT FORM SOFTENED WITH LOW MAINTENANCE AND HARDY SHRUBS AND GROUNDCOVERS WITH CASCADING PLANT SPECIES POSITIONED AT EDGE OF PLANTERS TO CREATE VERTICAL GREEN SCREEN

BCC DS
RECEIVED
24/06/2026
APPLICATION REF
A006915607

PRELIMINARY

C	REVISED ISSUE	MS	23.06.26
B	REVISED ISSUE	JM	12.03.26
rev	description	drawn	date

GD DEVELOPMENTS ONE PTY TD
12-16 RYLATT STREET, INDOOROOPILLY
LANDSCAPE CONCEPT PLAN
CHARACTER REFERENCE IMAGERY

LAUDink
landscape architecture & urban design
Office 7, 915 Ann Street, Fortitude Valley, QLD 4006
E: elee@laudink.com.au / jane@laudink.com.au
W: www.laudink.com.au
ABN 80 169 838 144

Conditions of Use: This document may only be used by LAUDink's client (and any other person who LAUDink has agreed can use this document) for the purpose for which it was prepared and must not be used by any other person or for any other purpose.

scale NTS for A1 job no. 2510-018
date JUN 2026 rev no. C

approved E. NICHOLAOU* SK040