

# 30 & 34-36 Hertford Street

## Landscape Design Report

BCC DS  
RECEIVED  
10/06/2026  
APPLICATION REF  
A006913284

# contents

2502-SD-1	Overall Site Plan
2502-SD-2	Landscape Concept Plan - Level 1 & Lower Level
2502-SD-3	Deep Planting Plan
2502-SD-4	Landscape Concept Plan - Level 2 Podium
2502-SD-5	Detailed Podium Concept Plan
2502-SD-6	Landscape Concept Plan - Level 3 & 4
2502-SD-7	Landscape Concept Plan - Level 5
2502-SD-8	Landscape Concept Plan - Level 6
2502-SD-9	Landscape Concept Plan - Level 7
2502-SD-10	Planter Depth Plan - Level 2
2502-SD-11	Planter Depth Plan - Level 3 & 4
2502-SD-12	Planter Depth Plan - Level 5
2502-SD-13	Planter Depth Plan - Level 6
2502-SD-14	Planter Depth Plan - Level 7
2502-SD-15	South and East Elevation
2502-SD-16	North and West Elevation
2502-SD-17	Landscape Buffer 1 & 3 (4m Wide Buffer) - Planting Plan
2502-SD-18	Landscape Buffer 1 & 3 (4m Wide Buffer) - Sections
2502-SD-19	Landscape Buffer 2 (4m Wide Buffer) - Planting Plan
2502-SD-20	Landscape Buffer 2 (4m Wide Buffer) - Section
2502-SD-21	Landscape Buffer 4 (10m Wide Buffer) - Planting Plan
2502-SD-22	Landscape Buffer 4 (10m Wide Buffer) - Section
2502-SD-23	Details and Maintenance Schedule
2502-SD-24	Proposed Character Images (1 of 2)
2502-SD-25	Proposed Character Images (2 of 2)
2502-SD-26	Proposed Plant Palette - Trees
2502-SD-27	Proposed Plant Palette - Shrubs
2502-SD-28	Proposed Plant Palette - Groundcovers
2502-SD-29	Proposed Plant Palette - Climbers & Overhanging Plants



# context

$$\text{Green Factor} = \frac{\text{Green factor area (in m}^2\text{)}}{\text{Site land area (in m}^2\text{)}}$$
$$\text{Green Factor} = \frac{3,510\text{m}^2}{8,859\text{m}^2}$$

**Green Factor = 0.396**



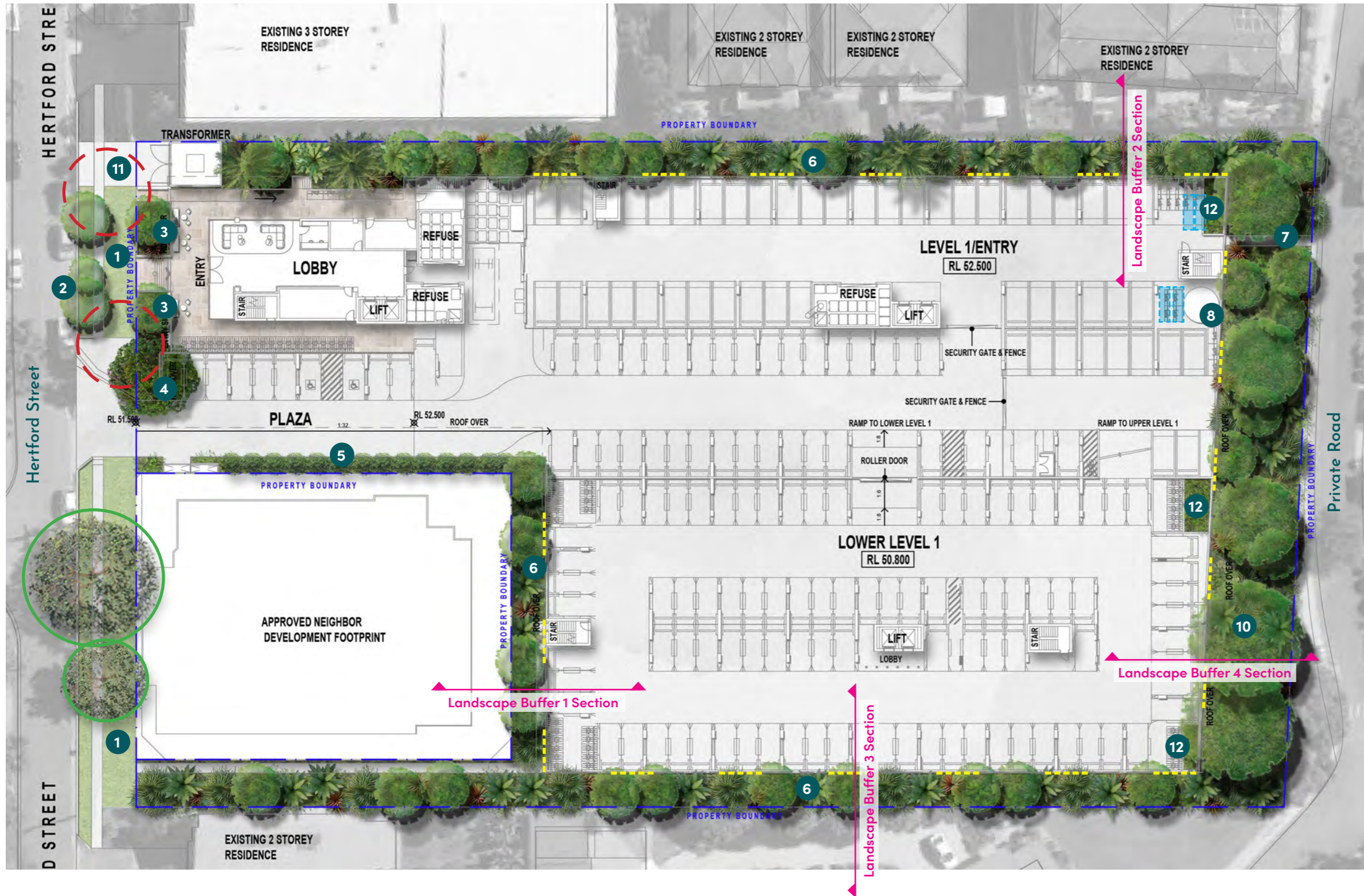


concepts

---

# concepts

**Note:** All landscape areas are accessible from the building or surrounding streets for maintenance purpose.



## LEGEND

- 1 Streetscape to comply with Neighbourhood Street Minor (NS2) requirements
- 2 Proposed new street trees
- 3 Deep planting along frontage consisting of canopy trees, shrubs and groundcovers
- 4 Entry feature tree with understorey planting i.e. Teddy Bear Magnolia
- 5 Shade tolerant screen shrubs i.e. Resilience Lilly Pilly and Rhaps Palm densely planted.
- 6 Mix of screen shrubs and canopy trees along boundary i.e. Blueberry Ash, Eumundi Quandong, Weeping Lilly Pilly, etc
- 7 Fire escape path within deep planting zone. Refer details.
- 8 Underground detention tank. Refer Civil Engineer's report
- 10 10m wide deep planting consisting of varying size canopy trees, shrubs and groundcovers. Trees include Hard Quandong, Blue Quandong, Small-leaved Fig, Weeping Lilly Pilly, Native Franginpani, etc
- 11 Slab extension into verge in front of transformer only
- 12 Shade tolerant planting under upper levels
- Existing street trees to be retained (Green circle)
- Existing street trees to be removed (Red dashed circle)
- 2 x 10,000L tanks for irrigation purposes under slab (Blue dashed rectangle)
- Tensile wire trellis planter with climbers (Yellow dashed line)



# concepts



## LEGEND

- Compliant deep planting opportunities (4x4m min)
- Landscaping opportunities
- 1 Path made of porous material
- Indicative services

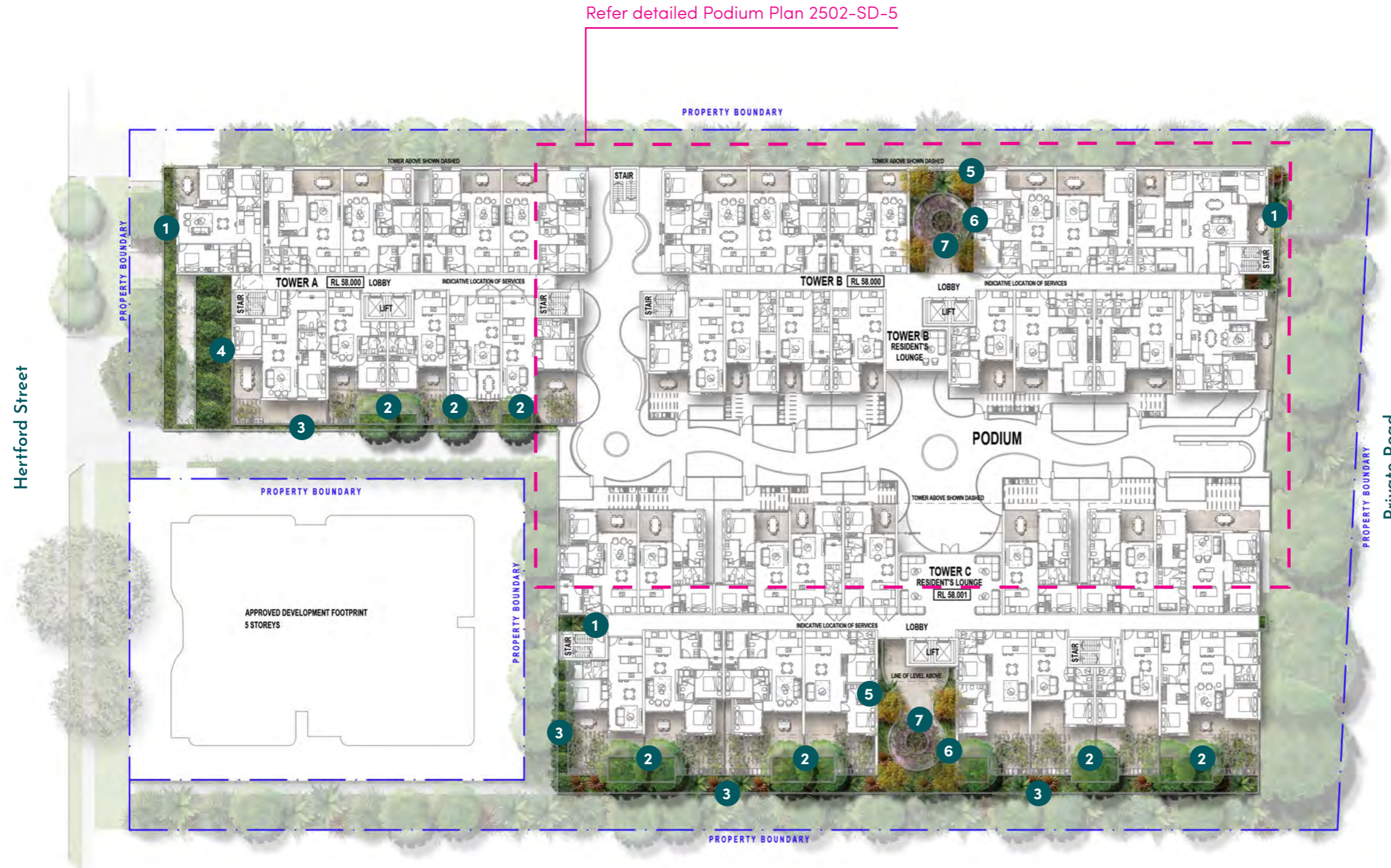
Total site area	8,859m <sup>2</sup>
Total landscape area (on Level 1 and Lower Level 1 only)	2,083m <sup>2</sup>
Total landscape percentage	23.5%
Compliant deep planting area	1,769m <sup>2</sup>
Deep planting percentage	20.0%



# concepts

**Note:** Most landscape areas are accessible through tower lifts and lobbies. Some areas are accessible through units which will be co-ordinated by the Body Corporate.

Refer detailed Podium Plan 2502-SD-5



7

## LEGEND

- 1 Facade planter: 600mm depth planter with low shrubs, groundcovers and trailing plants
- 2 Small canopy tree to private courtyard i.e. Native Gardenia with understorey planting
- 3 Perimeter planter: 800mm depth planter with screen shrubs and groundcovers
- 4 800mm depth planter with screen shrubs along the front facade
- 5 Thoroughfare tree - small/ medium canopy tree i.e. Water Gum
- 6 Thoroughfare shrubs and groundcovers i.e. Waterfall Plant, Xanadu, Everlasting Beauty, Lily Turf and Walking Iris
- 7 Feature canopy tree i.e. Weeping Lilly Pilly



# concepts



## LEGEND

- 1** Thoroughfare tree - small/medium canopy tree i.e. Water Gum
- 2** Thoroughfare shrubs and groundcovers i.e. Waterfall Plant, Xanadu, Everlasting Beauty, Lily Turf and Walking Iris
- 3** Small canopy tree to private courtyard i.e. Native Gardenia with understory planting
- 4** Feature shrubs and groundcovers i.e. Raphis Palm, Lacy Tree Fern, Cunjevoi, Dwarf Cardamon and Spider Lily
- 5** Feature canopy tree i.e. Weeping Lilly Pilly
- 6** Entry feature tree i.e. Little Gem Magnolia
- 7** Seating
- 8** Private courtyards
- 9** Courtyard screening (dotted line)



# concepts

**Note:** All landscape areas are accessible for maintenance purposes through lifts or stairs and lobbies/ corridors.



## LEGEND

- 1 Facade planter: 600mm depth planter with low shrubs, groundcovers and trailing plants
- 2 Thoroughfare shrubs and groundcovers i.e. Waterfall Plant, Xanadu, Everlasting Beauty, Lily Turf and Walking Iris



# concepts

**Note:** All landscape areas are accessible for maintenance purposes through lifts or stairs and lobbies/corridors. All professional maintenance staff are to be compliant with 'Working with Heights' requirements.



## LEGEND

- 1 Facade planter: 600mm depth planter with low shrubs, groundcovers and trailing plants
- 2 1200mm depth planter with small/medium size canopy tree i.e. Water Gum
- 3 1200mm depth planter with Evergreen Frangipani or Screw Pine and low understorey planting under
- 4 Thoroughfare shrubs and groundcovers i.e. Waterfall Plant, Xanadu, Everlasting Beauty, Lily Turf and Walking Iris
- 5 800mm depth planter i.e. Everlasting Beauty, Waterfall Plant and Just Right Liriope



# concepts

**Note:** All landscape areas are accessible for maintenance purposes through lifts or stairs and lobbies/corridors. All professional maintenance staff are to be compliant with 'Working with Heights' requirements.



## LEGEND

- 1 Facade planter: 600mm depth planter with low shrubs, groundcovers and trailing plants
- 2 1200mm depth planter with Evergreen Frangipani or Screw Pine and low understorey planting under
- 3 800mm depth planter with medium height shrubs for potential privacy purposes
- 4 Thoroughfare shrubs and groundcovers i.e. Waterfall Plant, Xanadu, Everlasting Beauty, Lily Turf and Walking Iris
- 5 1200mm depth planter with small/medium size canopy tree i.e. Water Gum



# concepts

**Note:** All landscape areas are accessible for maintenance purposes through lifts or stairs and lobbies/corridors. All professional maintenance staff are to be compliant with 'Working with Heights' requirements.

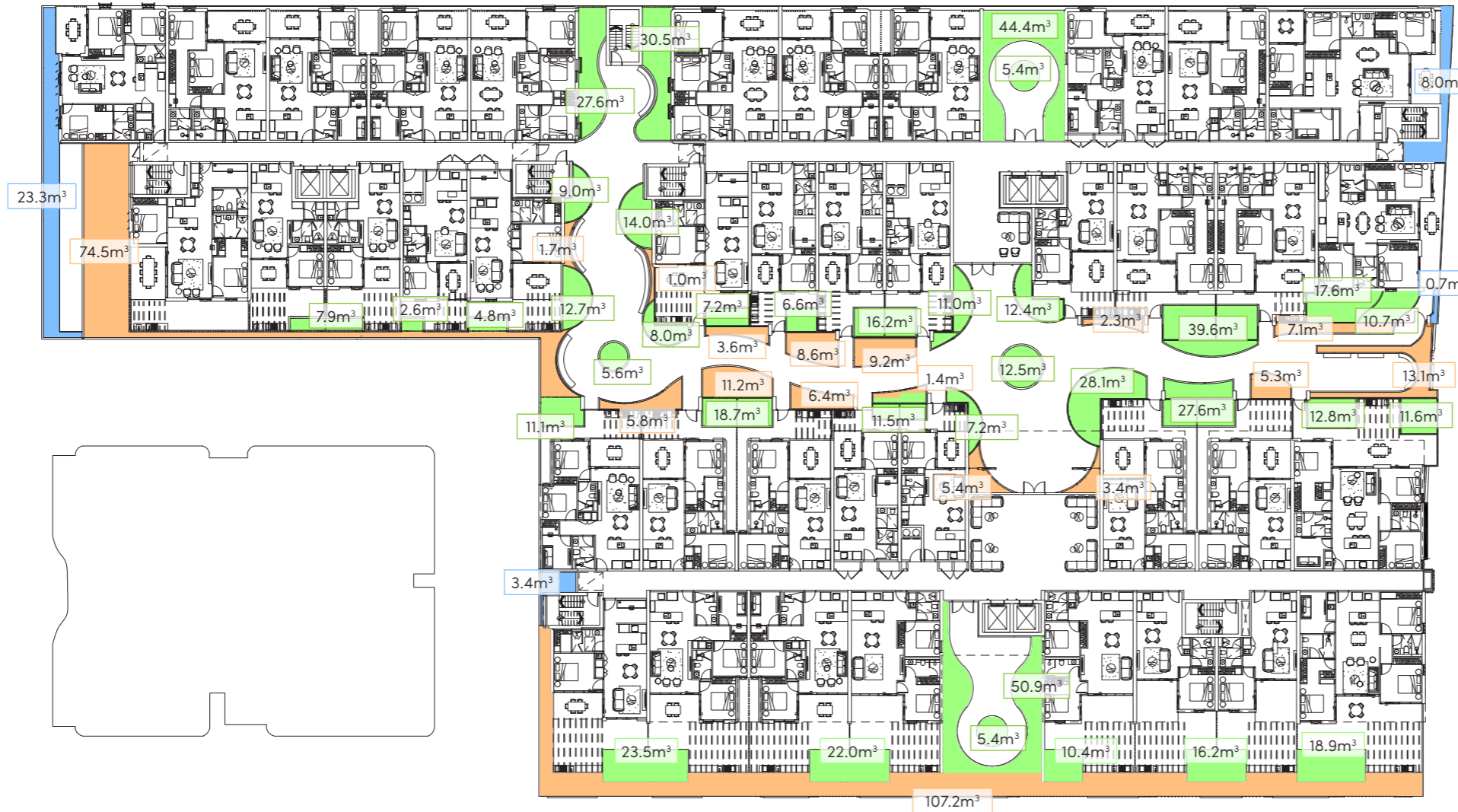


## LEGEND

- 1 Facade planter: 600mm depth planter with low shrubs, groundcovers and trailing plants
- 2 1200mm depth planter with small/medium size canopy tree i.e. Red Cottonwood Tree
- 3 800mm depth planter with screen shrubs i.e. Radermachera 'Everlasting Beauty'
- 4 1200mm depth planter with small/medium size canopy tree i.e. Weeping Lilly Pilly
- 5 1200mm depth planter with Evergreen Frangipani or Screw Pine and low understorey planting under



# concepts

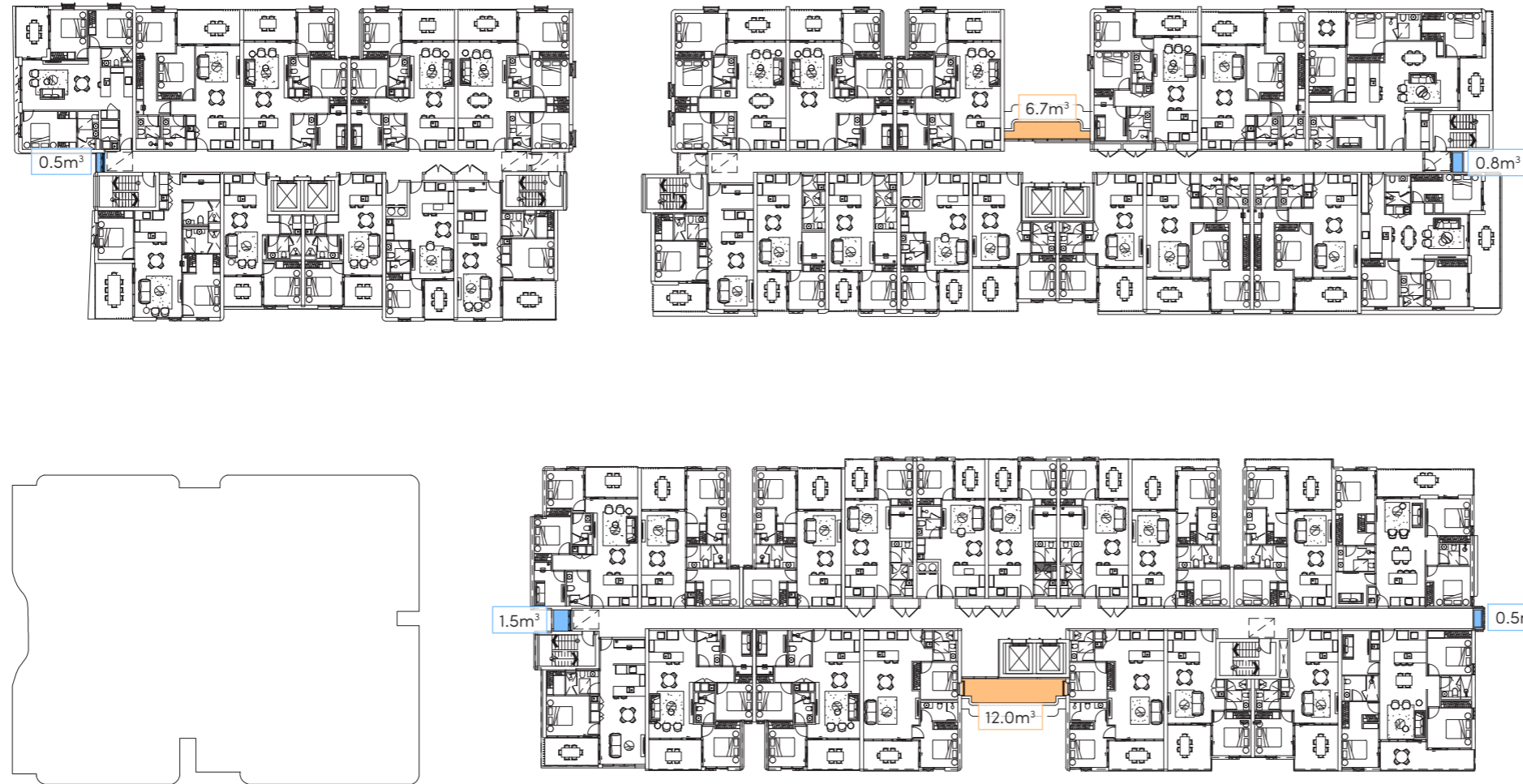


## LEGEND

- 1200mm depth planter (consisting of trees, shrubs and groundcovers)
- 800mm depth planter (consisting of tall shrubs and groundcovers)
- 600mm depth planter (consisting of low shrubs and groundcovers)



# concepts

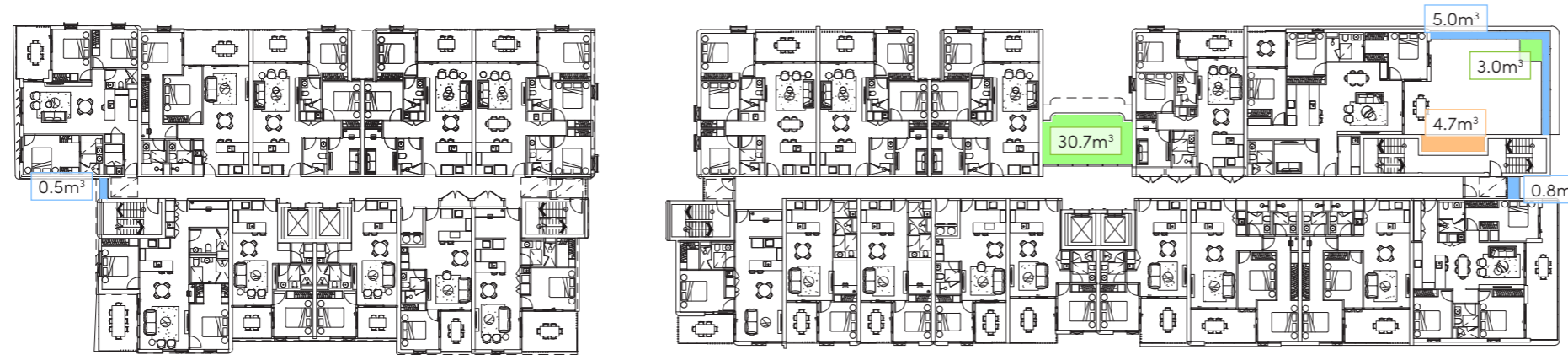


## LEGEND

- 600mm depth planter (consisting of low shrubs and groundcovers)
- 800mm depth planter (consisting of tall shrubs and groundcovers)

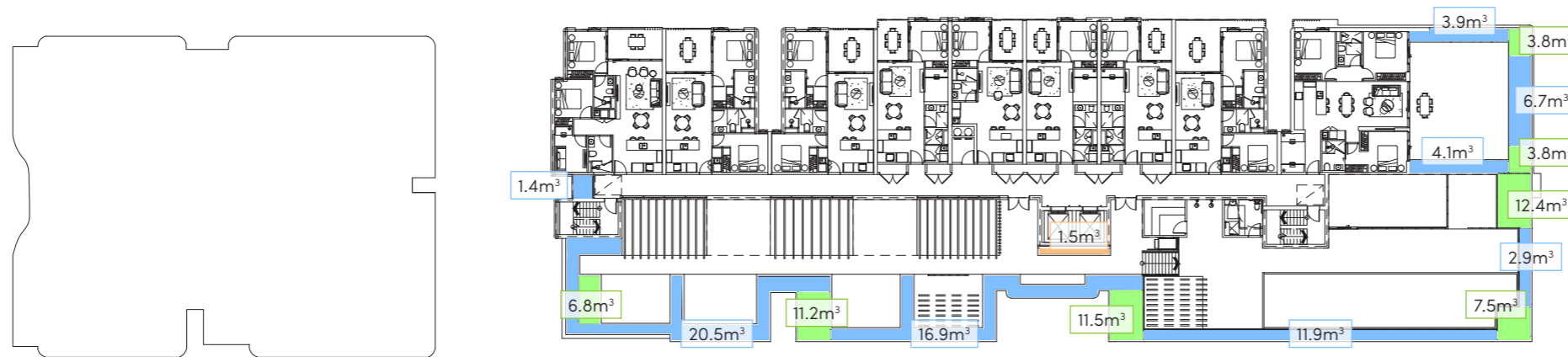


# concepts

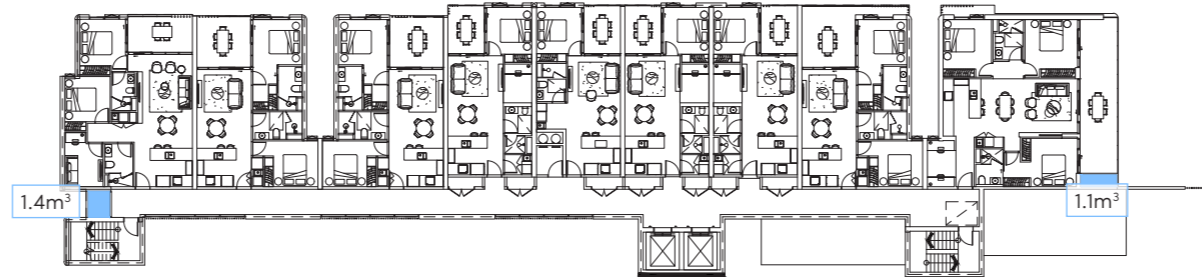
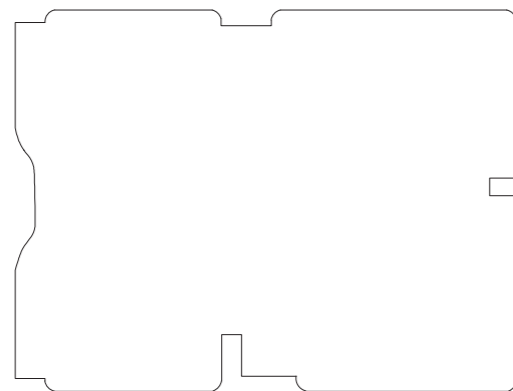
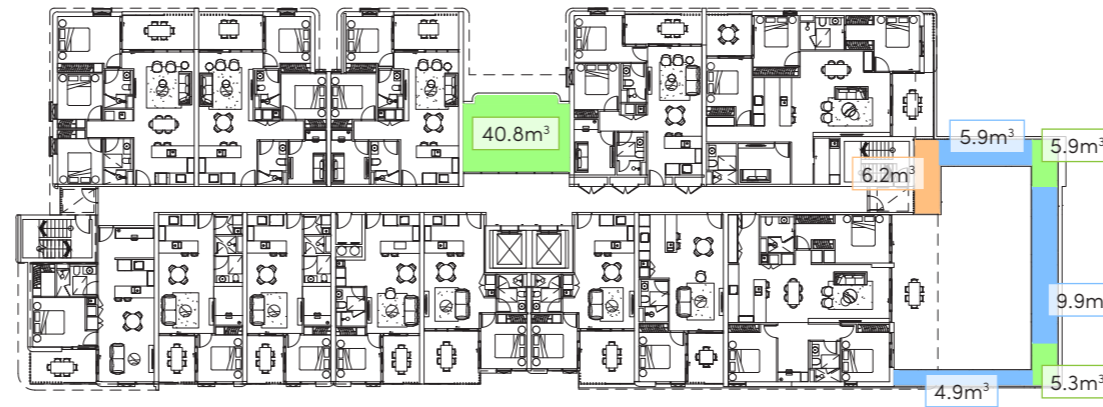
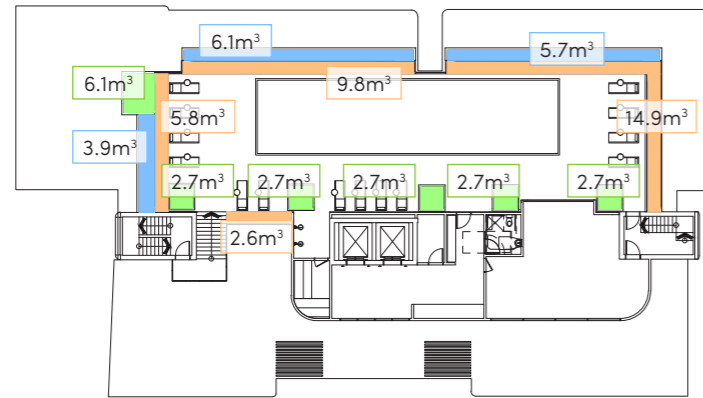


## LEGEND

- 1200mm depth planter (consisting of trees, shrubs and groundcovers)
- 800mm depth planter (consisting of tall shrubs and groundcovers)
- 600mm depth planter (consisting of low shrubs and groundcovers)



# concepts

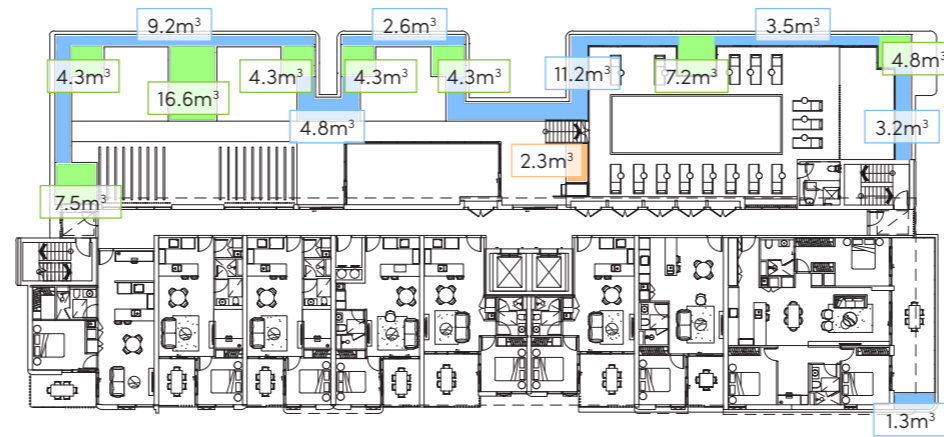


## LEGEND

- 1200mm depth planter (consisting of trees, shrubs and groundcovers)
- 800mm depth planter (consisting of tall shrubs and groundcovers)
- 600mm depth planter (consisting of low shrubs and groundcovers)



# concepts

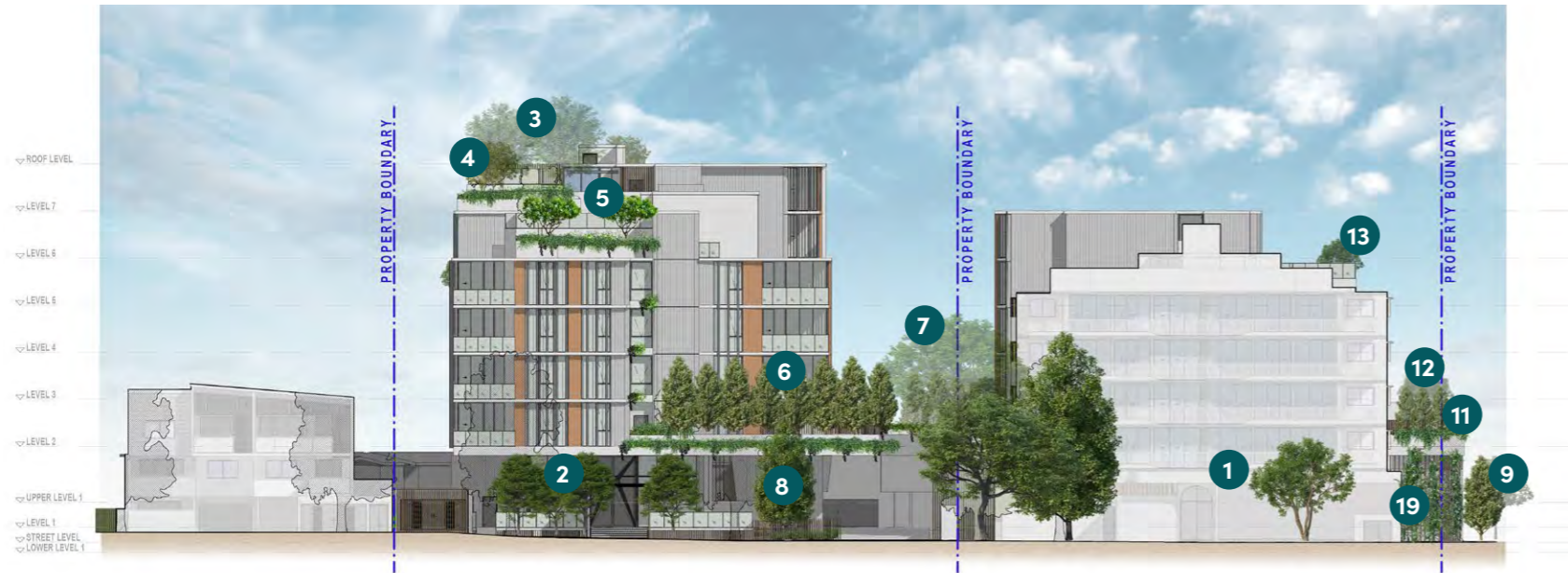


## LEGEND

- 1200mm depth planter (consisting of trees, shrubs and groundcovers)
- 800mm depth planter (consisting of tall shrubs and groundcovers)
- 600mm depth planter (consisting of low shrubs and groundcovers)



# concepts



SOUTH ELEVATION



EAST ELEVATION

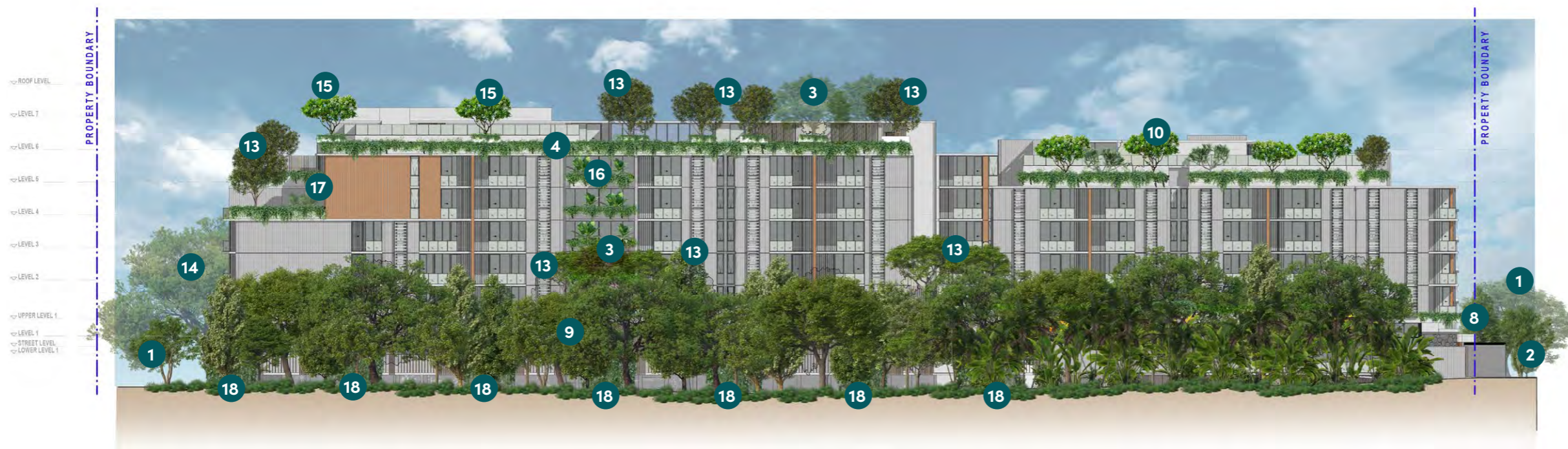
## LEGEND

- 1 Existing street trees to be retained
- 2 Proposed new street trees
- 3 1200mm depth planter with medium/ large size canopy tree i.e. Weeping Lilly Pilly (behind)
- 4 1200mm depth planter with small/ medium size canopy tree i.e. Red Cottonwood tree (behind)
- 5 Evergreen Frangipani
- 6 800mm depth planter with screen shrubs along front facade
- 7 Feature tree on podium i.e. Weeping Lilly Pilly
- 8 Entry feature tree with understorey planting i.e. Teddy Bear Magnolia
- 9 Mix of screen shrubs and canopy trees along side boundary i.e. Blueberry Ash, Eumundi Quandong, Weeping Lilly Pilly
- 10 Evergreen Frangipani or Screw Pine to pool surrounds (behind)
- 11 Perimeter planter: 800mm depth planter with screen shrubs and groundcovers
- 12 Small canopy tree to private courtyard i.e. Native Gardenia with understorey planting
- 13 Small/ medium size canopy tree i.e. Water Gum in 1200mm depth planter
- 14 10m wide deep planting consisting of varying size canopy trees, shrubs and groundcovers. Trees include Hard Quandong, Blue Quandong, Small-leaved Fig, Weeping Lilly Pilly, Native Frangipani
- 15 600mm depth planter with low shrubs, groundcovers and trailing plants
- 16 1200mm depth planter with feature tree i.e. Weeping Lilly Pilly (behind)
- 17 Thoroughfare shrubs and groundcovers i.e. Waterfall Plant, Xanadu, Everlasting Beauty, Lily Turf and Walking Iris
- 18 Evergreen Frangipani or Screw Pine to pool surrounds
- 19 Tensile wire trellis planter with climbers. Refer proposed plant palette for species options.

# concepts



NORTH ELEVATION

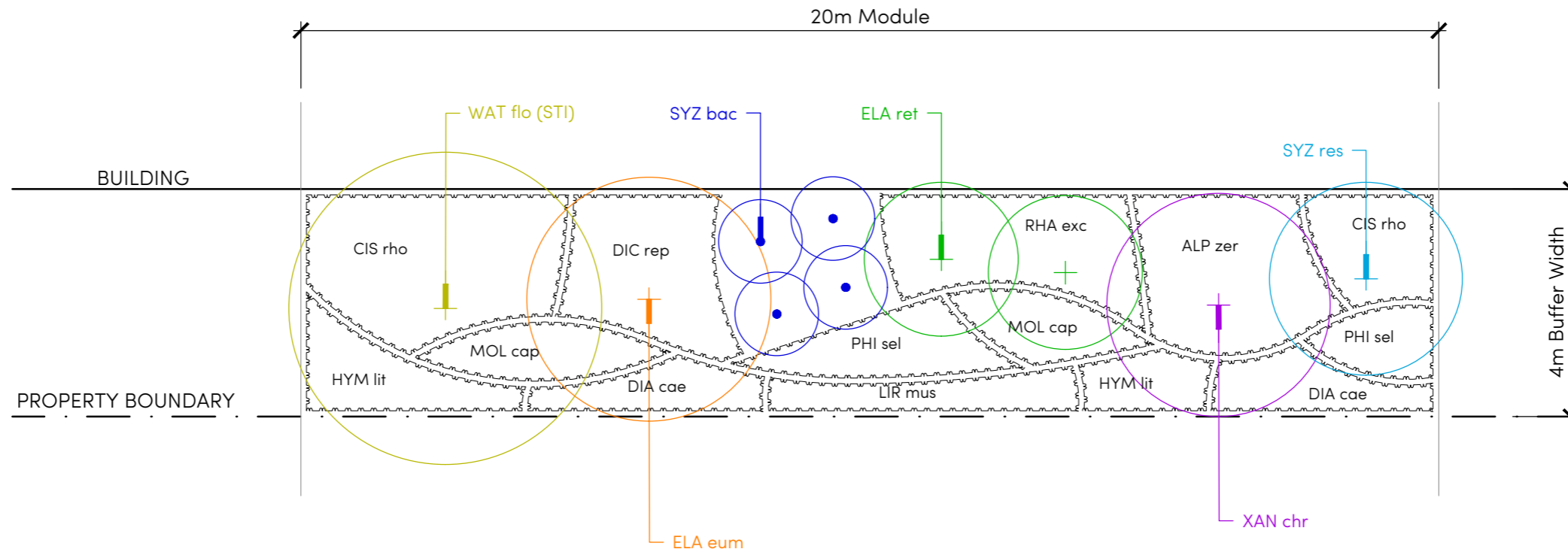


WEST ELEVATION

## LEGEND

- 1 Existing street trees to be retained
- 2 Proposed new street trees
- 3 1200mm depth planter with feature tree i.e. Weeping Lilly Pilly (behind)
- 4 1200mm depth planter with small/ medium size canopy tree i.e. Red Cottonwood tree
- 5 Facade planter: 600mm depth planter with low shrubs, groundcovers and trailing plants
- 6 1200mm depth planter with small/ medium size canopy tree i.e. Red Cottonwood tree (behind)
- 7 Feature tree on podium i.e. Weeping Lilly Pilly
- 8 Entry feature tree with understorey planting i.e. Teddy Bear Magnolia
- 9 Mix of screen shrubs and canopy trees along side boundary i.e. Blueberry Ash, Eumundi Quandong, Weeping Lilly Pilly
- 10 Evergreen Frangipani or Screw Pine to pool surrounds
- 11 Fire escape path
- 12 Small canopy tree to private courtyard i.e. Native Gardenia with understorey planting
- 13 Small/ medium size canopy tree i.e. Water Gum in 1200mm depth planter
- 14 10m wide deep planting consisting of varying size canopy trees, shrubs and groundcovers. Trees include Hard Quandong, Blue Quandong, Small-leaved Fig, Weeping Lilly Pilly, Native Frangipani
- 15 Evergreen Frangipani or Screw Pine to pool surrounds (foreground)
- 16 Thoroughfare shrubs and groundcovers i.e. Waterfall Plant, Xanadu, Everlasting Beauty, Lily Turf and Walking Iris
- 17 Everlasting Beauty, Waterfall Plant and Just Right Liriope (behind)
- 18 Tensile wire trellis planter with climbers. Refer proposed plant palette for species options.

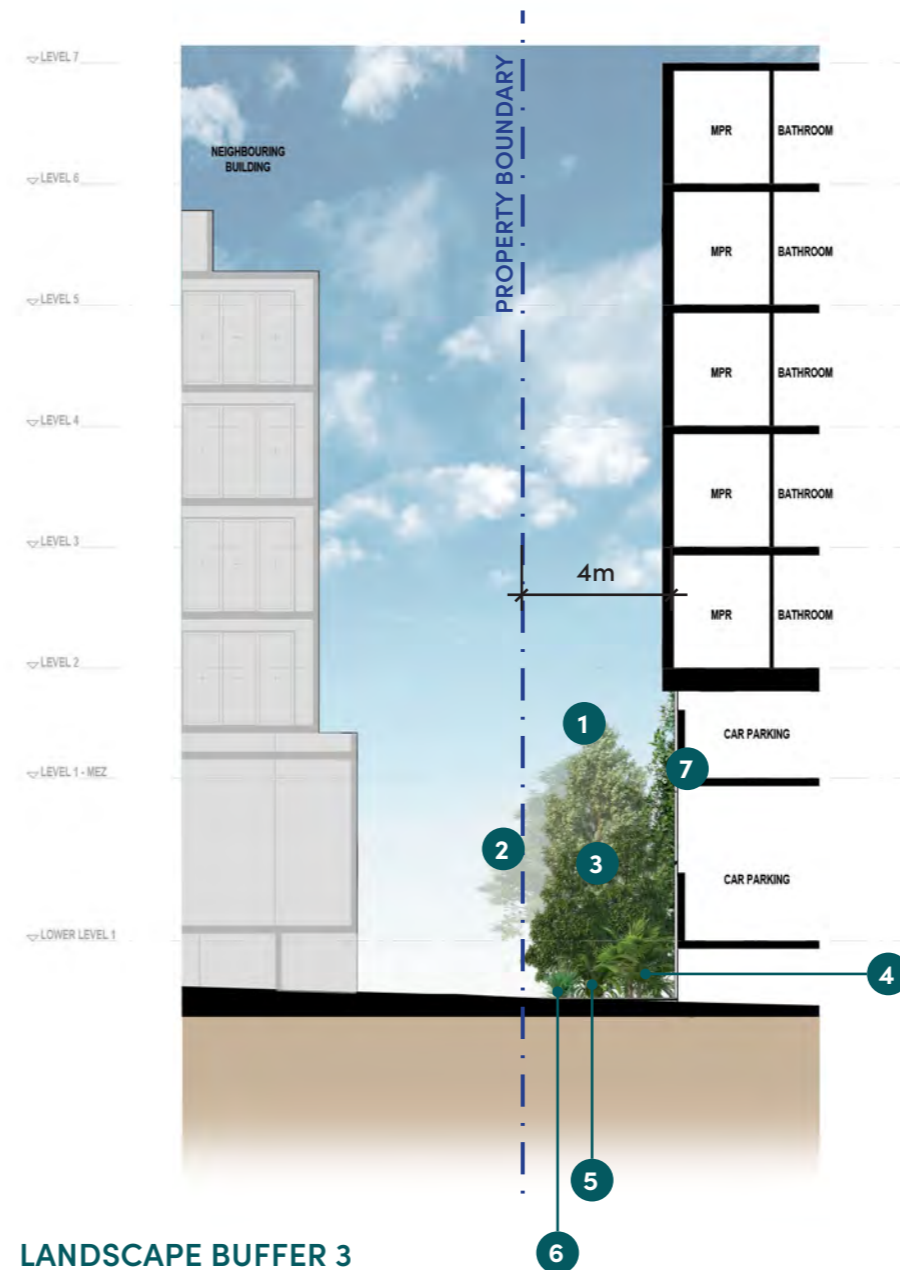
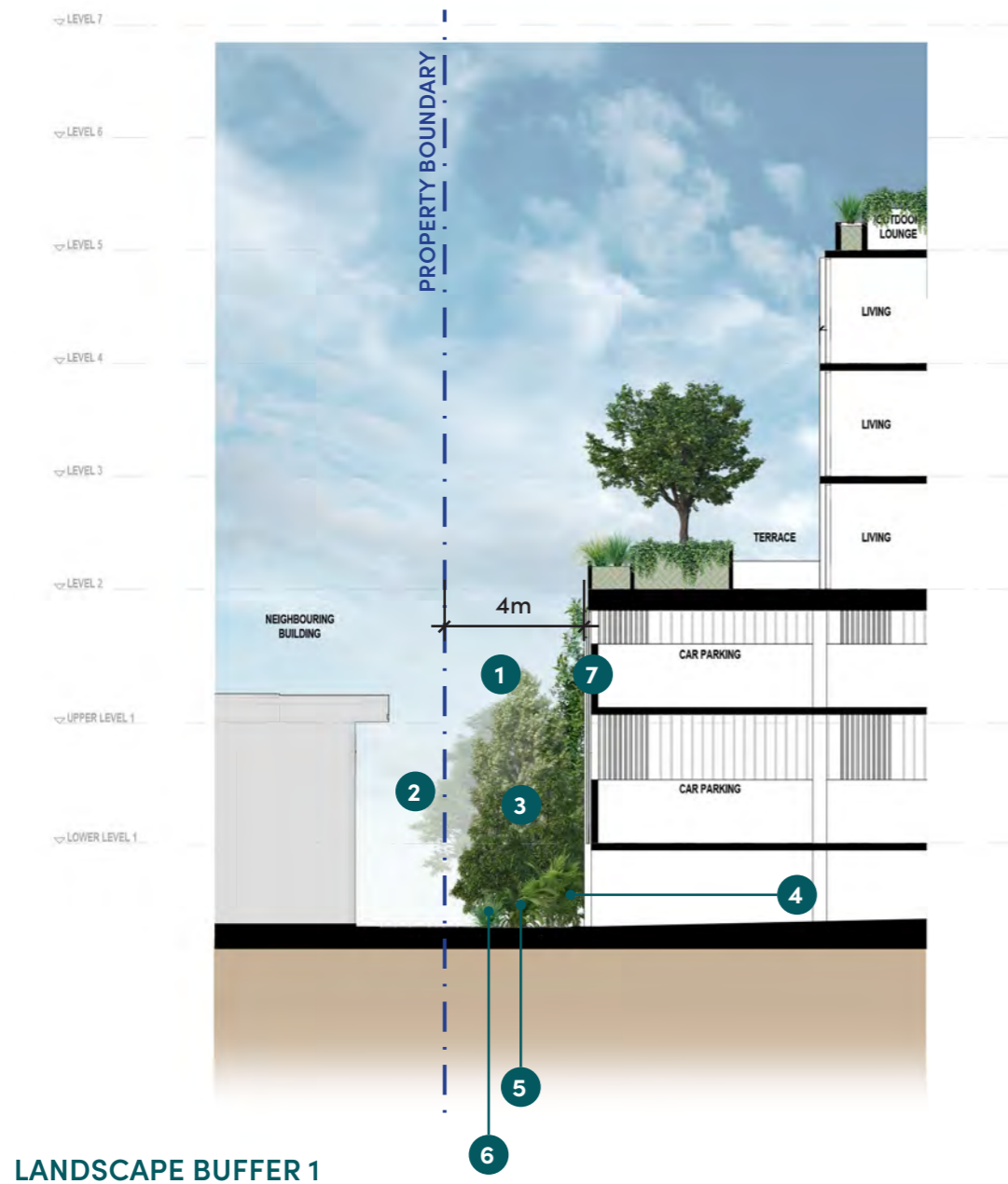
# concepts



## PLANT SCHEDULE

CODE	SPECIES	COMMON NAME	SHAPE / FORM	POT SIZE	MATURE SIZE (H X W)	INSTALL SIZE (H X W)	DENSITY
<b>TREES</b>							
ELA ret	ELAEOCARPUS reticulatus 'Prima Donna'	Blueberry Ash	Dense canopy, clear single trunk	100L	8m H x 3m W	2.5m H x 1m W	AS SHOWN
ELA eum	ELAEOCARPUS eumundii	Eumundi Quandong	Dense, columnar form	100L	10m H x 4m W	2.5m H x 1m W	AS SHOWN
SYZ bac	SYZYGIVM australe 'Backyard Bliss'	Backyard Bliss Lilly Pilly	Dense canopy, clear single trunk	100L	4m H x 1.5m W	2.5m H x 1m W	AS SHOWN
SYZ res	SYZYGIVM australe 'Resilience'	Resilience Lilly Pilly	Dense, columnar form	100L	4m H x 3m W	2m H x 0.8m W	AS SHOWN
WAT flo	WATERHOUSEA floribunda ST1 Whisper	Weeping Lilly Pilly	Dense canopy, clear single trunk	200L	8m H x 5m W	3.5m H x 2m W	AS SHOWN
XAN chr	XANTHOSTEMON chrysanthus	Golden Penda	Dense canopy, clear single trunk	200L	10m H x 5m W	3.5m H x 2m W	AS SHOWN
<b>SHRUBS</b>							
ALP zer	ALPINIA zerumbet	Green Shell Ginger		200mm	2m H x 1.5m W		1.2m apart
MOL cap	MOLINERA capitulata	Palm Grass		200mm	1m H x 1m W		0.7m apart
MON del	MONSTERA deliciosa	Swiss Cheese Plant		200mm	2m H x 1.5m W		AS SHOWN
PHI sel	PHILODENDRON selloum	Hope Philodendron		200mm	1.5m H x 1.5m W		1.5m apart
RHA exc	RHAPIS excelsa	Lady Palm		200mm	4m H x 2m W		1.3m apart
<b>GROUNDCOVERS</b>							
CIS rho	CISSUS rhombifolia 'Ellen Danica'	Grape Ivy		140mm	0.5m H x 3m W		0.4m apart
DIA cae	DIANELLA caerulea 'Little Jess'	Little Jess Dianella		140mm	0.4m H x 0.4m W		0.4m apart
DIC rep	DICHONDRA repens	Kidney Weed		140mm	0.1m H x 0.6m W		0.3m apart
HYM lit	HYMENOCALLIS littoralis	Spider Lily		140mm	1m H x 1m W		0.5m apart
LIR mus	LIRIOPE muscari 'Just Right'	Just Right Liriope		140mm	0.5m H x 0.5m W		0.3m apart

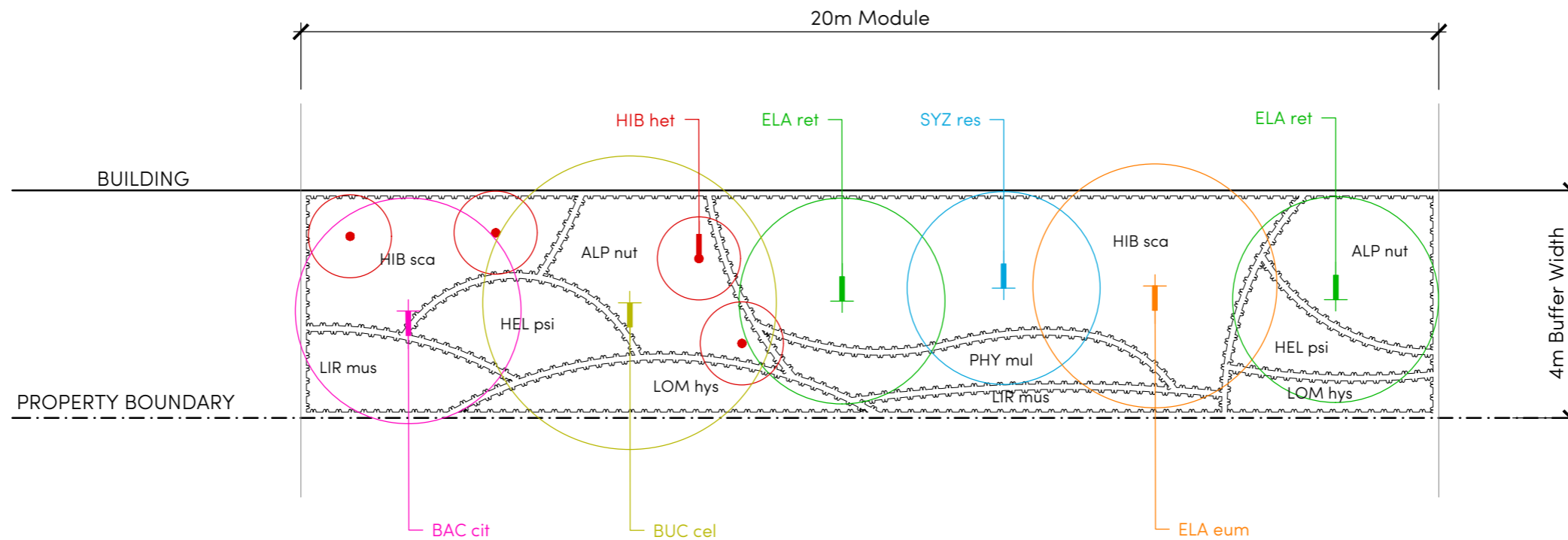
# concepts



## LEGEND

- 1 ELAEOCARPUS eumundii - Eumundi Quandong (behind)
- 2 WATERHOUSEA floribunda ST1 Whisper - Weeping Lilly Pilly (behind)
- 3 SYZGIUM australe 'Backyard Bliss' - Backyard Bliss Lilly Pilly
- 4 RHAPIS excelsa- Lady Palm
- 5 MOLINERA capitulata - Palm Grass
- 6 LIRIOPE muscari 'Just Right'
- 7 Tensile wire trellis planter with climbers. Refer proposed plant palette for species options.

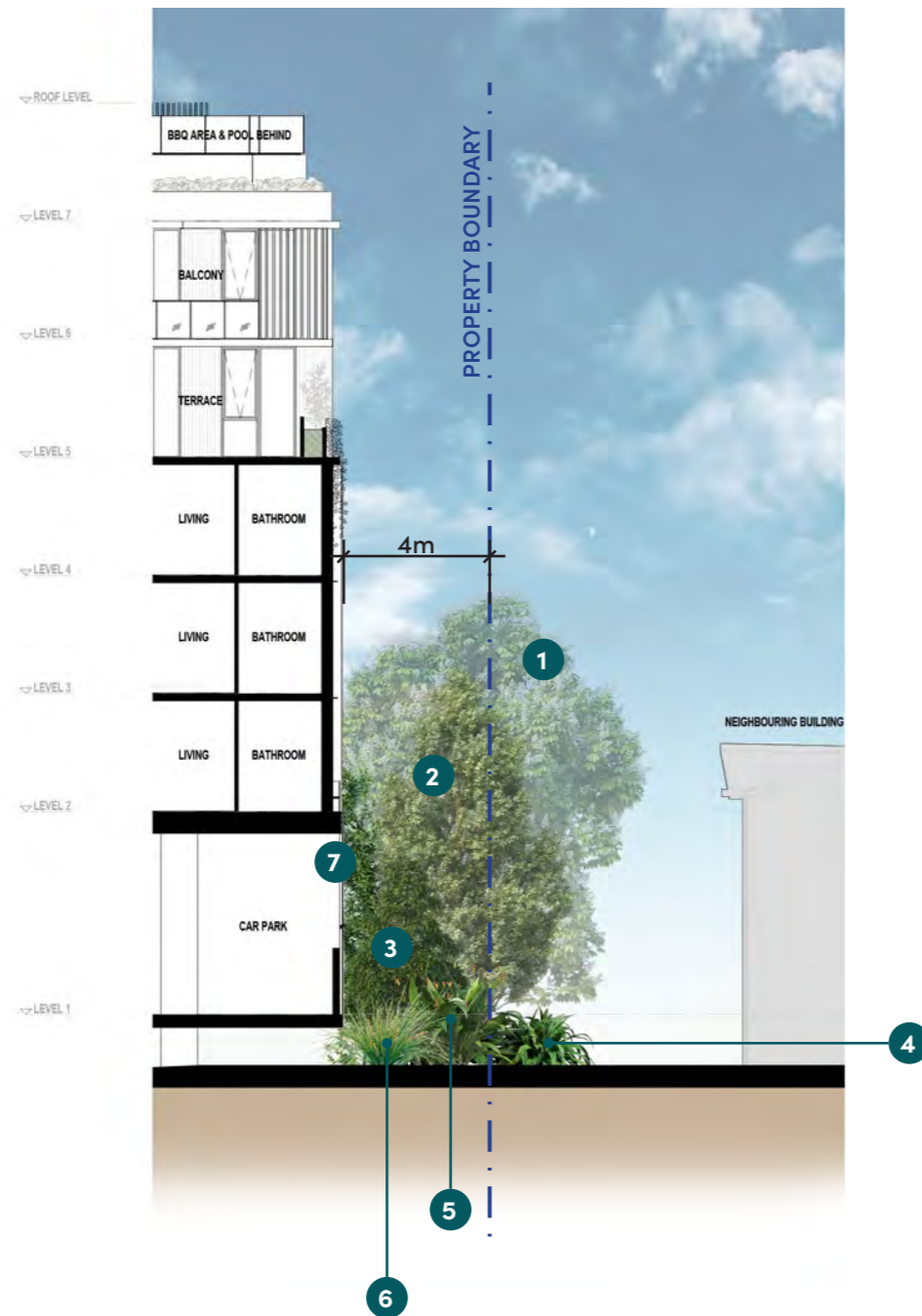
# concepts



## PLANT SCHEDULE

CODE	SPECIES	COMMON NAME	SHAPE / FORM	POT SIZE	MATURE SIZE (H X W)	INSTALL SIZE (H X W)	DENSITY
<b>TREES</b>							
BAC cit	BACKHOUSIA citriodora	Lemon Myrtle	Dense canopy, clear single trunk	200L	6m H x 4m W	3.5m H x 2m W	AS SHOWN
BUC cel	BUCKINGHAMIA celsissima	Ivory Curl Tree	Dense canopy, clear single trunk	200L	12m H x 5m W	3.5m H x 2m W	AS SHOWN
ELA ret	ELAEOCARPUS reticulatus	Blueberry Ash	Dense canopy, clear single trunk	100L	12m H x 4m W	2.5m H x 1m W	AS SHOWN
ELA eum	ELAEOCARPUS eumundii	Eumundi Quandong	Dense, columnar form	100L	10m H x 4m W	2.5m H x 1m W	AS SHOWN
SYZ res	SYZYGIUM australe 'Resilience'	Resilience Lilly Pilly	Dense, columnar form	100L	4m H x 3m W	2m H x 0.8m W	AS SHOWN
XAN chr	XANTHOSTEMON chrysanthus	Golden Penda	Dense canopy, clear single trunk	200L	10m H x 5m W	3.5m H x 2m W	AS SHOWN
<b>SHRUBS</b>							
ALP nut	ALPINIA nutans	Dwarf Cardomon		200mm	1.5m H x 1m W		0.75m apart
HEL psi	HELICONIA psittacorum	Andromeda		200mm	1.5m H x 1m W		0.75m apart
HIB het	HIBISCUS heterophyllus	Native Hibiscus		200mm	2m H x 1.5m W		3m apart
PHY mul	PHYLLANTHUS multiflorus	Waterfall Plant		200mm	1m H x 1m W		0.75m apart
<b>GROUNDCOVERS</b>							
HIB sca	HIBBERTIA scandens	Guinea Vine		140mm	0.75m H x 3m W		1.5m apart
HYM lit	HYMENOCELLIS littoralis	Spider Lily		140mm	1m H x 1m W		0.5m apart
LIR mus	LIRIOPE muscari 'Just Right'	Just Right Liriope		140mm	0.5m H x 0.5m W		0.3m apart
LOM hys	LOMANDRA hystrix	Creek Mat Rush		140mm	1m H x 1m W		0.5m apart

# concepts

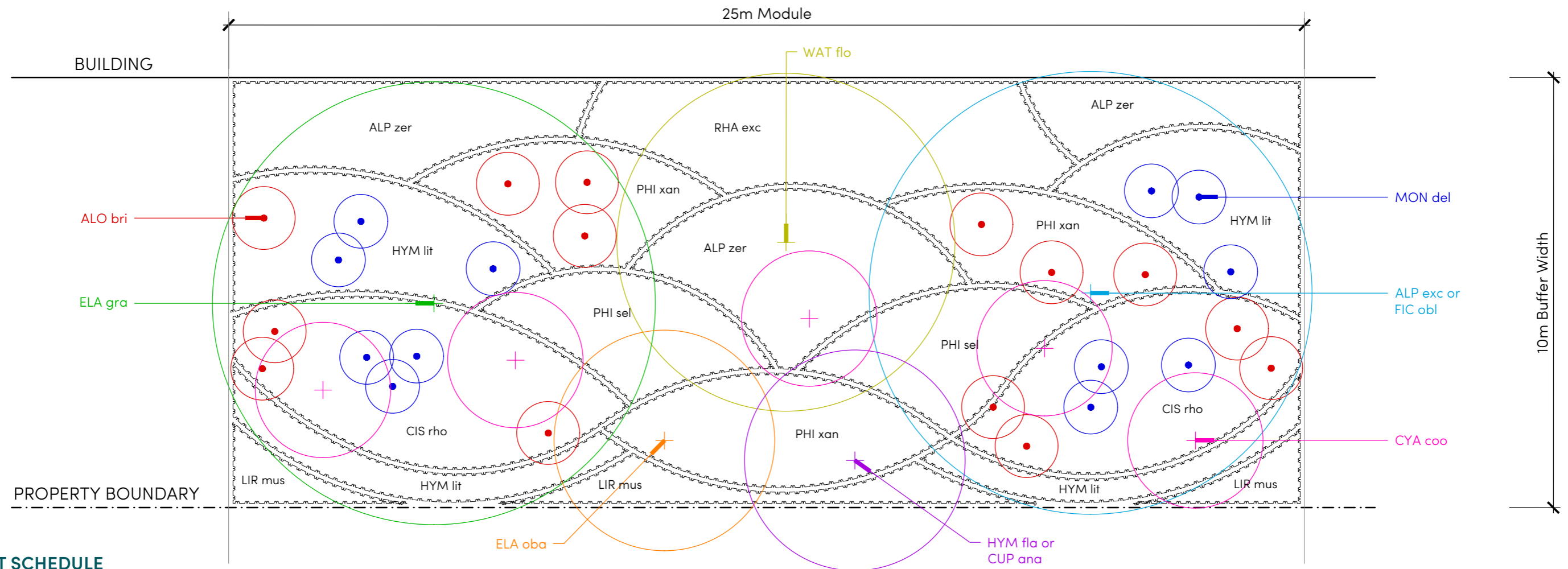


LANDSCAPE BUFFER 2

## LEGEND

- 1 BUCKINGHAMIA celsissima - Ivory Curl Tree (behind)
- 2 ELAEOCARPUS reticulatus - Blueberry Ash (behind)
- 3 SYZYGIUM australe 'Resilience' - Resilience Lilly Pilly
- 4 ALPINIA nutans - Dwarf Cardomon
- 5 HELICONIA psittacorum - Andromeda
- 6 LOMANDRA hystrix - Creek Mat Rush
- 7 Tensile wire trellis planter with climbers. Refer proposed plant palette for species options.

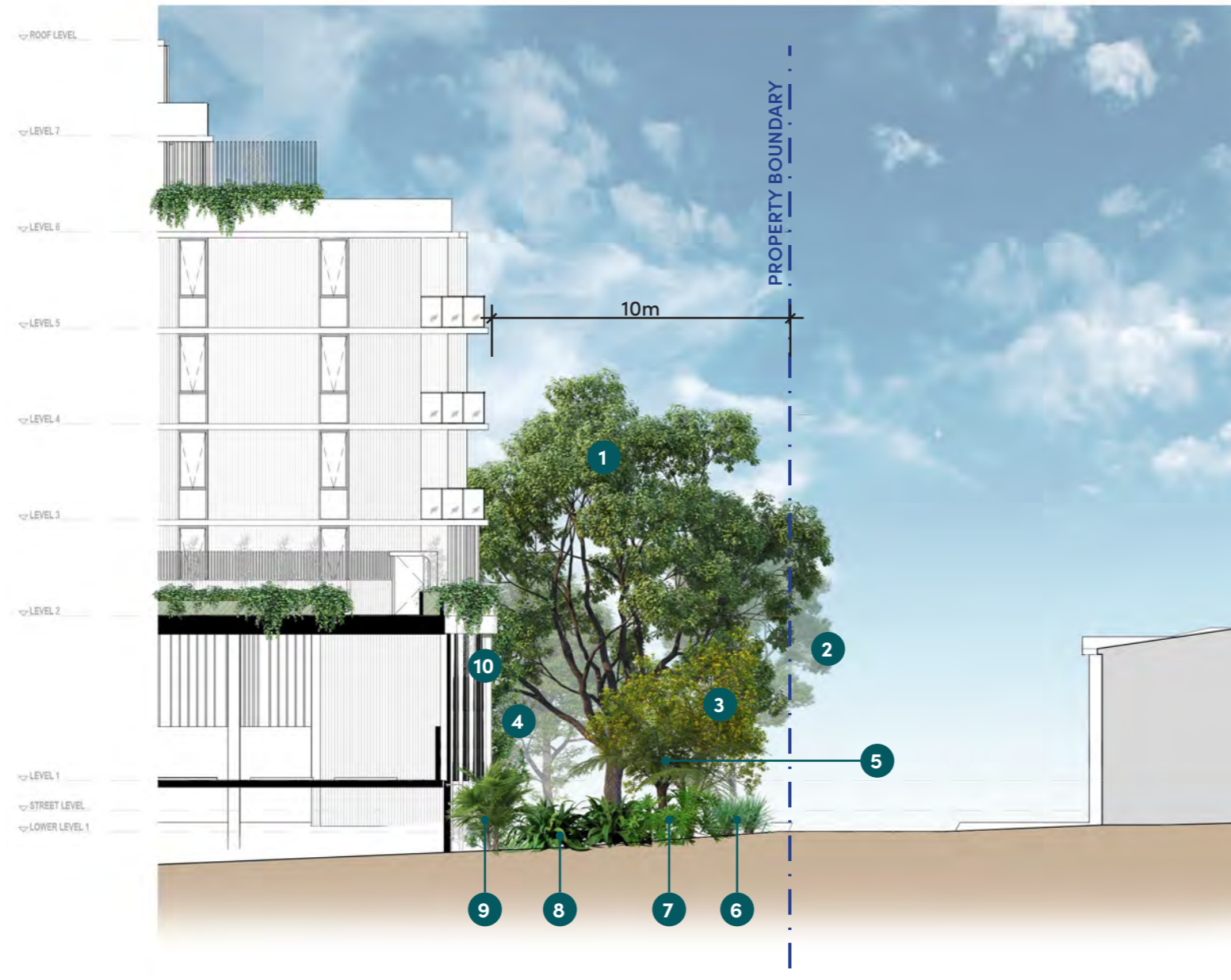
# concepts



## PLANT SCHEDULE

CODE	SPECIES	COMMON NAME	SHAPE / FORM	POT SIZE	MATURE SIZE (H X W)	INSTALL SIZE (H X W)	DENSITY
<b>TREES</b>							
ALP exc	ALPHITONIA excelsa	Red Ash	Dense canopy, clear single trunk	100L	15m H x 10m W	2.5m H x 1m W	AS SHOWN
CUP ana	CUPANIOPSIS anacardioides	Tuckeroo	Dense canopy, clear single trunk	200L	7m H x 6m W	3.5m H x 2m W	AS SHOWN
ELA gra	ELAEOCARPUS grandis	Blue Quandong	Dense canopy, clear single trunk	200L	30m H x 10m W	3.5m H x 2m W	AS SHOWN
ELA obo	ELAEOCARPUS obavatus	Hard Quandong	Dense canopy, clear single trunk	100L	10m H x 5m W	2.5m H x 1m W	AS SHOWN
FIC obl	FICUS obliqua	Small-Leaved Fig	Dense canopy, clear single trunk	200L	20m H x 15m W	3.5m H x 2m W	AS SHOWN
HYM fla	HYMENOSPORUM flavum	Native Frangipani	Dense canopy, clear single trunk	100L	8m H x 5m W	2.5m H x 1m W	AS SHOWN
WAT flo	WATERHOUSEA floribunda	Weeping Lilly Pilly	Dense canopy, clear single trunk	200L	10m H x 8m W	3.5m H x 2m W	AS SHOWN
<b>SHRUBS</b>							
ALO bri	ALOCASIA brisbenensis	Cunjevoi		200mm	1.5m H x 1.5m W		AS SHOWN
ALP zer	ALPINIA zerumbet	Green Shell Ginger		200mm	2m H x 1.5m W		1.2m apart
CYA coo	CYATHEA cooperii	Lacy Tree Fern		25L	5m H x 3m W		AS SHOWN
MON del	MONSTERA deliciosa	Swiss Cheese Plant		200mm	2m H x 1.5m W		AS SHOWN
PHI xan	PHILODENDRON xanadu	Xanadu		200mm	1.2m H x 1.2m W		0.75m apart
PHI sel	PHILODENDRON selloum	Hope Philodendron		200mm	1.5m H x 1.5m W		1.5m apart
RHA exc	RHAPIS excelsa	Lady Palm		200mm	4m H x 2m W		1.3m apart
<b>GROUNDCOVERS</b>							
CIS rho	CISSUS rhombifolia 'Ellen Danica'	Grape Ivy		140mm	0.5m H x 3m W		0.4m apart
DIA cae	DIANELLA caerulea 'Little Jess'	Little Jess Dianella		140mm	0.4m H x 0.4m W		0.4m apart
HYM lit	HYMENOCALLIS littoralis	Spider Lily		140mm	1m H x 1m W		0.5m apart
LIR mus	LIRIOPE muscari 'Just Right'	Just Right Liriope		140mm	0.5m H x 0.5m W		0.3m apart

# concepts

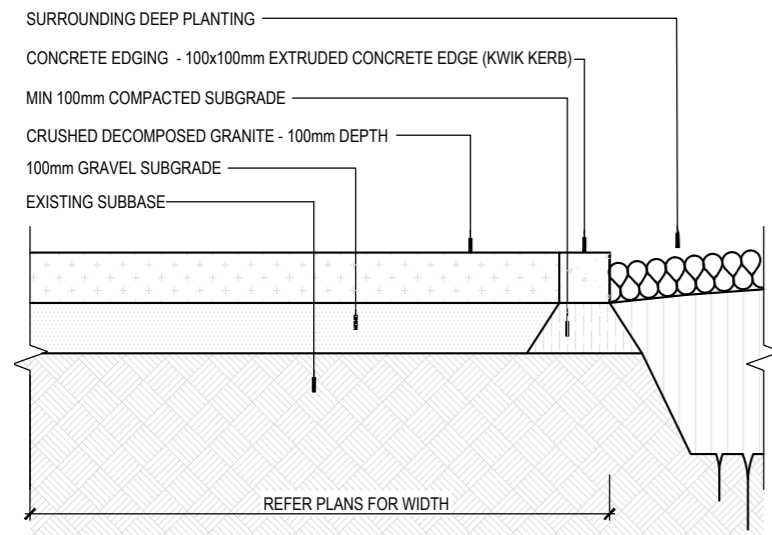


LANDSCAPE BUFFER 2

## LEGEND

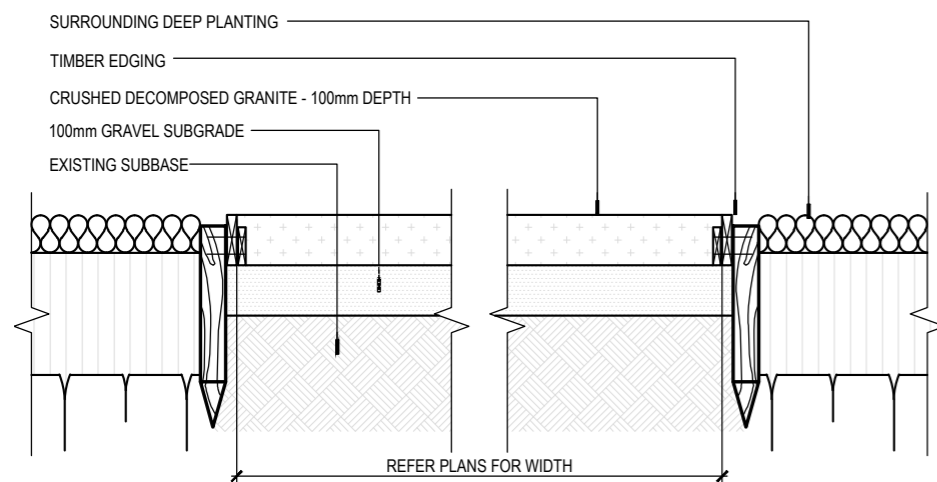
- 1 ELAEOCARPUS grandis - Blue Quandong
- 2 ALPHITONIA excelsa - Red Ash (behind)
- 3 HYMENOSPORUM flavum - Native Frangipani
- 4 WATERHOUSEA floribunda ST1 Whisper - Weeping Lilly Pilly (behind)
- 5 CYATHEA cooperii - Lacy Tree Fern
- 6 LIRIOPE muscari 'Just Right'
- 7 PHILODENDRON xanadu - Xanadu
- 8 ALPINIA zerumbet - Green Shell Ginger
- 9 RHAPIS excelsa - Lady Palm
- 10 Tensile wire trellis planter with climbers. Refer proposed plant palette for species options.

# concepts



## 1 PATH WITHIN DEEP PLANTING ZONE (DECOMPOSED CRUSHED GRANITE PAVEMENT) - CONCRETE EDGE OPTION

Scale 1:15@A3



## 2 PATH WITHIN DEEP PLANTING ZONE (DECOMPOSED CRUSHED GRANITE PAVEMENT) - TIMBER EDGE OPTION

Scale 1:15@A3

## ANNUAL MAINTENANCE SCHEDULE

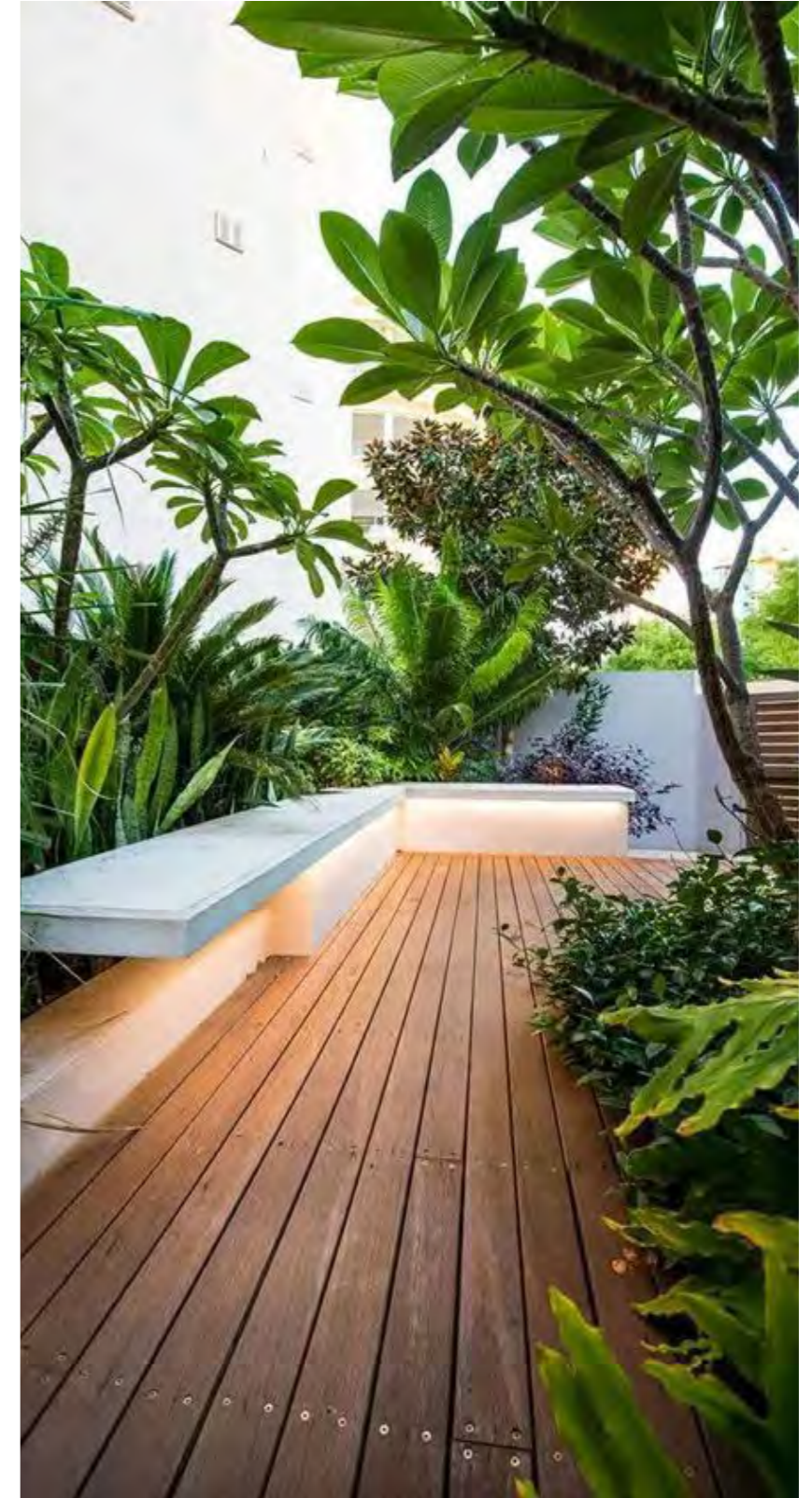
PERIOD	PLANT MAINTENANCE	IRRIGATION MAINTENANCE	
SPRING	<b>September</b>	« Weekly visual inspection of all garden beds for signs of plant stress, weeds etc « Undertake quarterly inspection and removal of dead leaves, plant parts and weeds « Undertake annual inspection and replacement of plants and application of fertiliser	« Undertake quarterly inspection of irrigation system including filter check and inspect gardens « Undertake annual inspection of irrigation system
	<b>October</b>	« Weekly visual inspection of all garden beds for signs of plant stress, weeds etc	
	<b>November</b>	« Weekly visual inspection of all garden beds for signs of plant stress, weeds etc	
SUMMER	<b>December</b>	« Weekly visual inspection of all garden beds for signs of plant stress, weeds etc « Undertake quarterly inspection and removal of dead leaves, plant parts and weeds	« Undertake quarterly inspection of irrigation system including filter check and inspect gardens
	<b>January</b>	« Weekly visual inspection of all garden beds for signs of plant stress, weeds etc	
	<b>February</b>	« Weekly visual inspection of all garden beds for signs of plant stress, weeds etc	
AUTUMN	<b>March</b>	« Weekly visual inspection of all garden beds for signs of plant stress, weeds etc « Undertake quarterly inspection and removal of dead leaves, plant parts and weeds	« Undertake quarterly inspection of irrigation system including filter check and inspect gardens
	<b>April</b>	« Weekly visual inspection of all garden beds for signs of plant stress, weeds etc	
	<b>May</b>	« Weekly visual inspection of all garden beds for signs of plant stress, weeds etc	
WINTER	<b>June</b>	« Weekly visual inspection of all garden beds for signs of plant stress, weeds etc « Undertake quarterly inspection and removal of dead leaves, plant parts and weeds	« Undertake quarterly inspection of irrigation system including filter check and inspect gardens
	<b>July</b>	« Weekly visual inspection of all garden beds for signs of plant stress, weeds etc	
	<b>August</b>	« Weekly visual inspection of all garden beds for signs of plant stress, weeds etc	



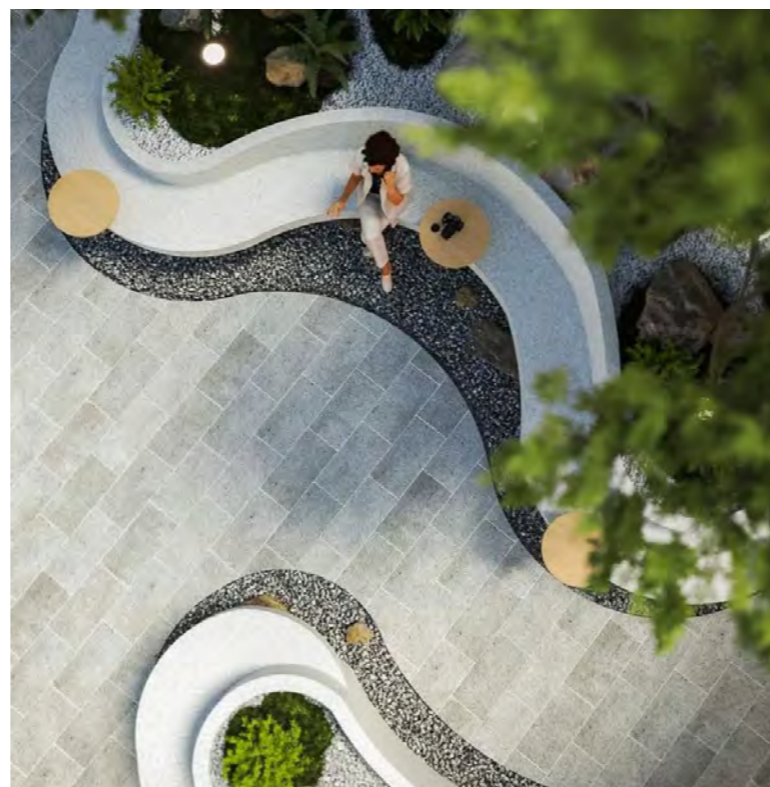
character

---

# character



# character

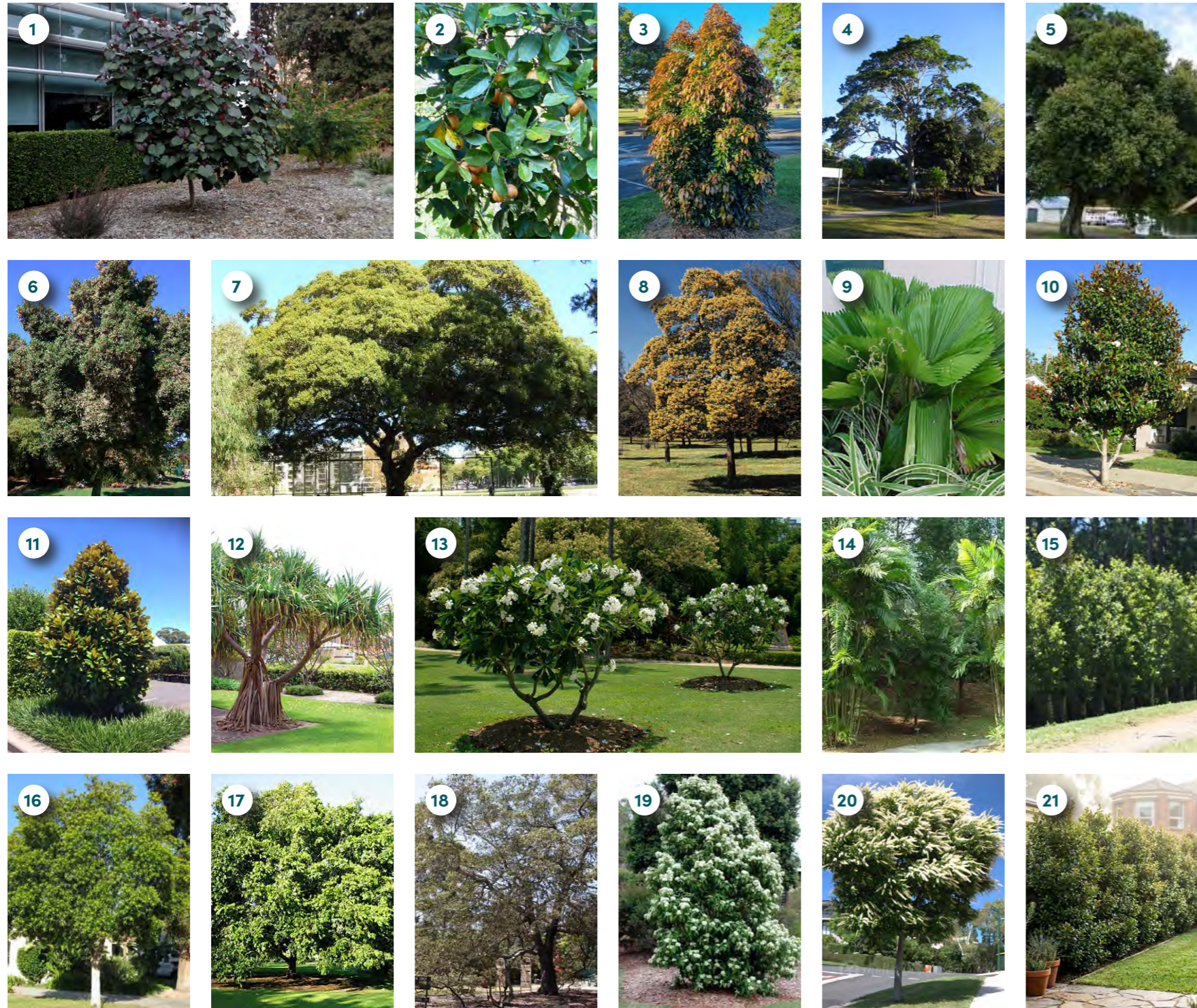




plant palette

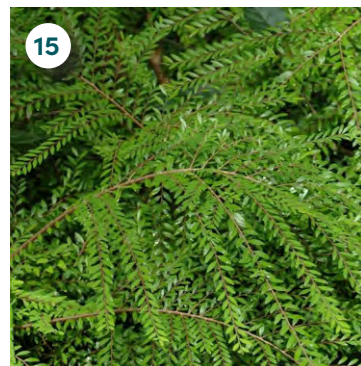
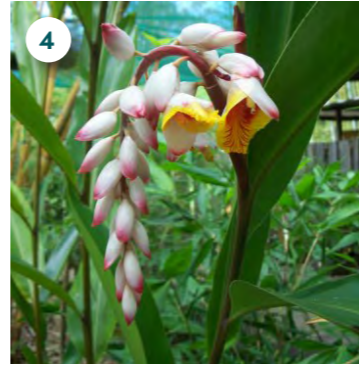
---

# trees



CODE	SPECIES	COMMON NAME
1	HIB til HIBISCUS tiliaceus rubra	Red Cottonwood Tree
2	ATR fit ATRACTOCARPUS fitzalanii	Native Gardenia
3	ELA eum ELAEOCARPUS eumundii	Eumundi Quandong
4	ELA gra ELAEOCARPUS grandis	Blue Quandong
5	ELA oba ELAEOCARPUS obovatus	Hard Quandong
6	ELA ret ELAEOCARPUS reticulatus 'Prima Donna'	Blueberry Ash
7	FIC obt FICUS obliqua	Small-Leaved Fig
8	HYM fla HYMENOSPORUM flavum	Native Frangipani
9	LIC gra LICUALA Grandis	Ruffled Fan Palm
10	MAG lit MAGNOLIA 'Little Gem'	Little Gem Magnolia
11	MAG ted MAGNOLIA 'Teddy Bear'	Teddy Bear Magnolia
12	PAN ped PANDANUS pedunculatus	Screw Pine
13	PLU obt PLUMERIA obtusa 'Singapore White'	Evergreen Frangipani
14	PTY mac PTYCHOSPERMA macarthurii	Macarthur Palm
15	SYZ res SYZYGIVM Resilience	Resilience Lilly Pilly
16	TRI lau TRISTANIOPSIS laurina	Water Gum
17	WAT flo WATERHOUSEA floribunda	Weeping Lilly Pilly
18	ALP exc ALPHITONIA excelsa	Red Ash
19	BAC cit BACKHOUSIA citriodora	Lemon Myrtle
20	BUC cel BUCKINGHAMIA celsissima	Ivory Curl Tree
21	SYZ bac SYZYGIVM australe 'Backyard Bliss'	Backyard Bliss Lilly Pilly

# shrubs



CODE	SPECIES	COMMON NAME
1	ALC odo ALCANTERA odorata	Silver Bromeliad
2	ALO bri ALOCASIA brisbanensis	Cunjevoi
3	ALP nut ALPINIA nutans	Dwarf Cardomon
4	ALP zer ALPINIA zerumbet	Green Shell Ginger
5	CAR mac CARISSA macrocarpa 'Emerald Star'	Natal Plum
6	CRA ova CRASSULA ovata	Jade Plant
7	CYA coo CYATHEA cooperii	Lacy Tree Fern
8	HEL psi HELICONIA psittacorum	Andromeda
9	HIB het HIBISCUS heterophyllus	Native Hibiscus
10	MOL cap MOLINERA capitulata	Palm Grass
11	MON del MONSTERA deliciosa	Swiss Cheese Plant
12	PHI glo PHILODENDRON gloriosum	Velvet Philodendron
13	PHI hop PHILODENDRON selloum	Hope Philodendron
14	PHI xan PHILODENDRON xanadu	Xanadu
15	PHY mul PHYLLANTHUS multiflorus	Waterfall Plant
16	PIT tob PITTIOSPORUM tobira 'Miss Muffet'	Miss Muffet
17	RHA exc RHAPIS excelsa	Lady Palm
18	RAD eve RADERMACHERA kunmig hybrid	Everlasting Beauty
19	ZAM fur ZAMIA furfuracea	Cardboard Palm

# groundcovers



CODE	SPECIES	COMMON NAME
1	ASP den ASPARAGUS densiflorus 'Myersii'	Foxtail Fern
2	CAL lan CALATHEA lancifolia	Rattle Snake Prayer
3	CIS ell CISSUS rhombifolia 'Ellen Danica'	Grape Ivy
4	CTE bur CTENANTHE burle-marxii	Fishbone Prayer Plant
5	DIA cae DIANELLA caerulea 'Little Jess'	Little Jess Dianella
6	DIC rep DICHONDRA repens	Kidney Weed
7	HIB sca HIBBERTIA scandens	Snake Vine
8	HYM lit HYMENOCALLIS littoralis	Spider Lily
9	LIG den LIGULARIA dentata reniformis	Tractor Seat Plant
10	LIR jus LIRIOPE muscari	Just Right Liriope
11	LOM hys LOMANDRA hystrix	Creek Mat Rush
12	NEO bos NEOREGELIA 'Bosa Nova'	Bromeliad
13	NEO gra NEOMARICA gracilis	Walking Iris
14	RHO spa RHOEO spathacea	Moses in the Cradle
15	VIO hed VIOLA hederacea	Native Violet

# climbers and overhanging plants



	CODE	SPECIES	COMMON NAME
1	APT cor	APTENIA cordifolia	Baby Sun Rose
2	CAS gla	CASUARINA glauca	Cousin It
3	DIC sil	DICHONDRA argentea	Silver Falls
4	EPI aur	EPIPREMNUM aureum	Devils Ivy
5	JUN con	JUNIPERUS conferta	Shore Juniper
6	MYO par	MYOPORUM parvifolium	Creeping Boobialla
7	PLE aus	PLECTRANTHUS australis	Swedish Ivy
8	RHI cap	RHIPSALIS capilliformis	Old Man's Beard Cactus
9	RHI par	RHIPSALIS paradoxa	Chain Cactus
10	TEC hil	TECOMANTHE hillii	Fraser Island Creeper
11	THU mis	THUNBERGIA mysorensis	Lady Slipper Vine
12	PYR ven	PYROSTEGIA venusta	Orange Trumpet Creeper
13	BEA gra	BEAUMONTIA grandiflora	Easter Lily Vine



PO Box 2451 Fortitude Valley BC, Fortitude Valley 4006 | 0408 346 307 | [as@as-design.com.au](mailto:as@as-design.com.au) | [as-design.com.au](http://as-design.com.au)