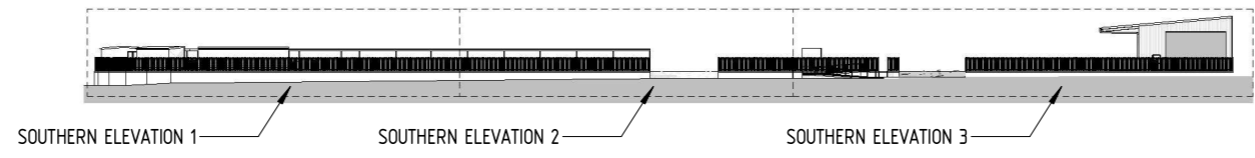
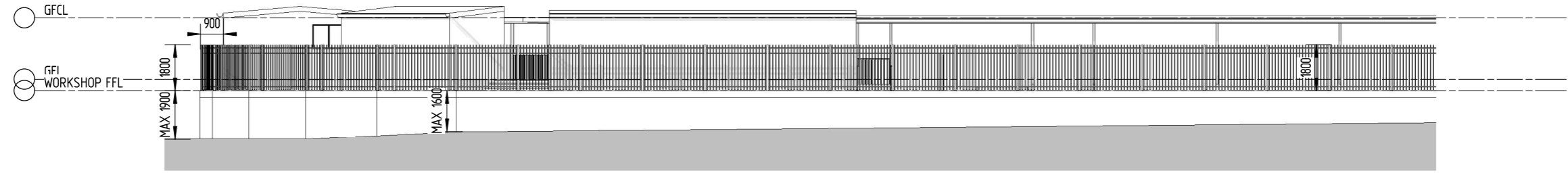


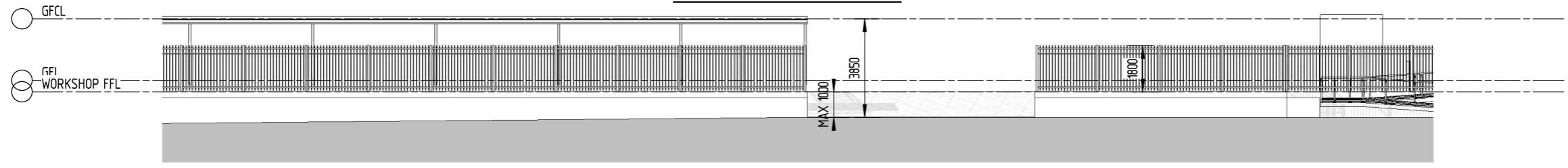
BCC DS
RECEIVED
 24/06/2026
APPLICATION REF
 A006885564



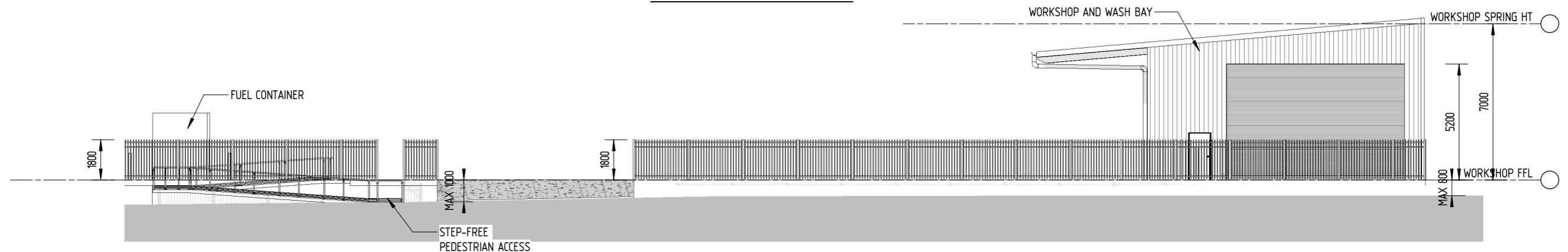
SOUTHERN ELEVATION FULL



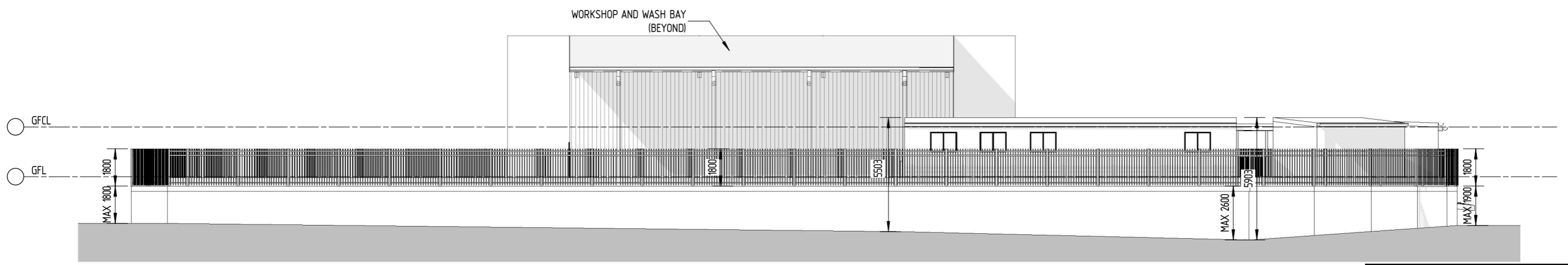
SOUTHERN ELEVATION 1



SOUTHERN ELEVATION 2



SOUTHERN ELEVATION 3



WESTERN ELEVATION

DEVELOPMENT APPLICATION

COPYRIGHT THE CONTENTS AND INFORMATION CONTAINED IN THIS DOCUMENT ARE THE COPYRIGHT OF LEROY PALMER CONSULTING ENGINEERS. USE OR DUPLICATION OF THIS DOCUMENT IN PART OR IN FULL WITHOUT THE WRITTEN PERMISSION OF LEROY PALMER CONSULTING ENGINEERS PTY LTD CONSTITUTES AN INFRINGEMENT OF COPYRIGHT.	Amend	Date	Amendment Details	Issued by	Client: JOHN L PIERCE TRANSPORT	Project: PROPOSED WORKSHOP AND WASH BAY LOT 12 HARRIS ROAD PINKENBA	Drawing Title: SITE ELEVATIONS	 CIVIL ENGINEERING STRUCTURAL ENGINEERING HYDRAULIC ENGINEERING BUILDING DESIGN	Suite 8, Capital Place, 195 Hume St [PO Box 1413] Toowoomba Q 4350 P 07 4638 7655 E lpalmer@lpc.com.au ACN 125 942 163	Designed MAD	 MATT ALLEN QBCC 15012462	 LEROY PALMER RPEQ 5208
	1	24/06/26	DA REVISION	MAD						Drawn MAD Scale 1:200, 1:1000 (A3) Drawing Number 18648 - DA01.3		