

**PLAN**  
1:250

**Fire Ant Movement Controls**

To prevent the spread of fire ants, the Queensland Government has implemented controls that apply to individuals and commercial operators, to restrict the movement of materials that could carry fire ants including soil, turf, potted plants, mulch, baled hay or straw, animal manures, mining or quarry products.

Penalties apply for non-compliance with the movement controls. If you are unsure of your obligations under the Biosecurity Act 2014 contact the relevant Queensland State Government Department.

THIS APPROVAL SHOULD NOT BE TAKEN TO CONSTITUTE PERMISSION TO ENTER NEIGHBOURING PROPERTIES TO CONSTRUCT (INCLUDING ASSOCIATED WORKS SUCH AS DRAINAGE AND EXCAVATION) ANY BUILT TO BOUNDARY WALL OR FENCES. PERMISSION MUST BE OBTAINED FROM RELEVANT PROPERTY OWNERS.

**BCC DS**  
RECEIVED  
28/04/23  
APPLICATION REF  
A005867462

**AMENDED IN RED**  
25/05/2023

Stormwater easement width to be considered at operational works and to be of a width appropriate for the pipe size determined in accordance with Condition 30 and as per Infrastructure design planning scheme policy.

Development Footprint Plan - Boundary setbacks of future building as per Queensland Development Code unless otherwise granted through siting variation.

**BCC DS**  
RECEIVED  
28/10/2025  
APPLICATION REF  
A006891244

**PLANS AND DOCUMENTS**  
referred to in the  
**NEGOTIATED DECISION**  
Dated: 25/05/2023

- NOTES & LEGENDS**
- REFER TO DRAWING 001 FOR GENERAL NOTES
  - REFER TO DRAWING 002 FOR DRAWING LEGENDS

**SERVICES**

ALL FEATURE, STRUCTURE, SERVICE ETC LOCATIONS & LEVELS SHOWN ON THIS PLAN ARE TO BE CONFIRMED ON SITE PRIOR TO THE START OF ANY CONSTRUCTION

**WARNING**

BEWARE OF UNDERGROUND SERVICES

THE LOCATIONS OF UNDERGROUND SERVICES ARE APPROXIMATE ONLY AND THEIR EXACT POSITION SHOULD BE PROVEN ON SITE. NO GUARANTEE IS GIVEN THAT ALL EXISTING SERVICES ARE SHOWN. LOCATE ALL UNDERGROUND SERVICES BEFORE COMMENCEMENT OF WORKS

**DIAL 1100 BEFORE YOU DIG**  
www.1100.com.au



PROJECT  
**RESIDENTIAL SUBDIVISION**  
381 BROADWATER ROAD,  
MANSFIELD, QLD. 4122  
LOT 1 RP71000

CLIENT  
**P GILMER**

SURVEYOR  
**ONF SURVEYORS**

STATUS  
**FOR APPROVAL**  
TO BE USED FOR CONSTRUCTION ONCE APPROVED

APPROVED RPEQ No

SCALE 0 2.5 5 10  
Scale 1:250

O.S.S  
**A1**

REV	DESCRIPTION	DRN	DATE
A	ORIGINAL ISSUE	JD	24/04/23

DRAWING TITLE  
**PROPOSED SITE LAYOUT PLAN**

REVIEW	BY	DATE	DRAWING NUMBER	REVISION
DESIGN	SC	24/04/23	CWD-12102-OP-004	A
DESIGN	JD	24/04/23		
DRAWN	JD	24/04/23		

Dated: 25/05/2023



**Legend**

- Site boundary
- RMU1
- RMU2
- - - Pet exclusion fencing
- Rehabilitation Area

Fencing and access requirements to be determined at Operational Works stage.

**Fire Ant Movement Controls**

To prevent the spread of fire ants, the Queensland Government has implemented controls that apply to individuals and commercial operators, to restrict the movement of materials that could carry fire ants including soil, turf, potted plants, mulch, baled hay or straw, animal manures, mining or quarry products.

Penalties apply for non-compliance with the movement controls. If you are unsure of your obligations under the Biosecurity Act 2014 contact the relevant Queensland State Government Department.

THIS APPROVAL SHOULD NOT BE TAKEN TO CONSTITUTE PERMISSION TO ENTER NEIGHBOURING PROPERTIES TO CONSTRUCT (INCLUDING ASSOCIATED WORKS SUCH AS DRAINAGE AND EXCAVATION) ANY BUILT TO BOUNDARY WALL OR FENCES. PERMISSION MUST BE OBTAINED FROM RELEVANT PROPERTY OWNERS.

**AMENDED IN RED**  
15/05/2023

BCC DS  
RECEIVED  
28/04/23  
APPLICATION REF  
A005867462



2/265 Sandgate Road Albion, 4010  
Ph 07 3505 3053  
www.s5consulting.com.au  
ABN 74 600 187 844

Issue	Description	Date	Client	Project Name	Project No.
v1.1	Final	24/04/2023	Peter Gilmer	381 Broadwater Rd, Mansfield	S523034
Drawing Name	<b>Concept Rehabilitation Plan</b>				<b>RMP001</b>

THIS APPROVAL SHOULD NOT BE TAKEN TO CONSTITUTE PERMISSION TO ENTER NEIGHBOURING PROPERTIES TO CONSTRUCT (INCLUDING ASSOCIATED WORKS SUCH AS DRAINAGE AND EXCAVATIONS) ANY BUILT TO BOUNDARY WALL OR FENCES. PERMISSION MUST BE OBTAINED FROM RELEVANT PROPERTY OWNERS.

**AMENDED IN RED**  
15/05/2023

**PLANS AND DOCUMENTS**  
referred to in the  
**NEGOTIATED DECISION**  
Dated: 25/05/2023

**Fire Ant Movement Controls**

To prevent the spread of fire ants, the Queensland Government has implemented controls that apply to individuals and commercial operators, to restrict the movement of materials that could carry fire ants including soil, turf, potted plants, mulch, baled hay or straw, animal manures, mining or quarry products.

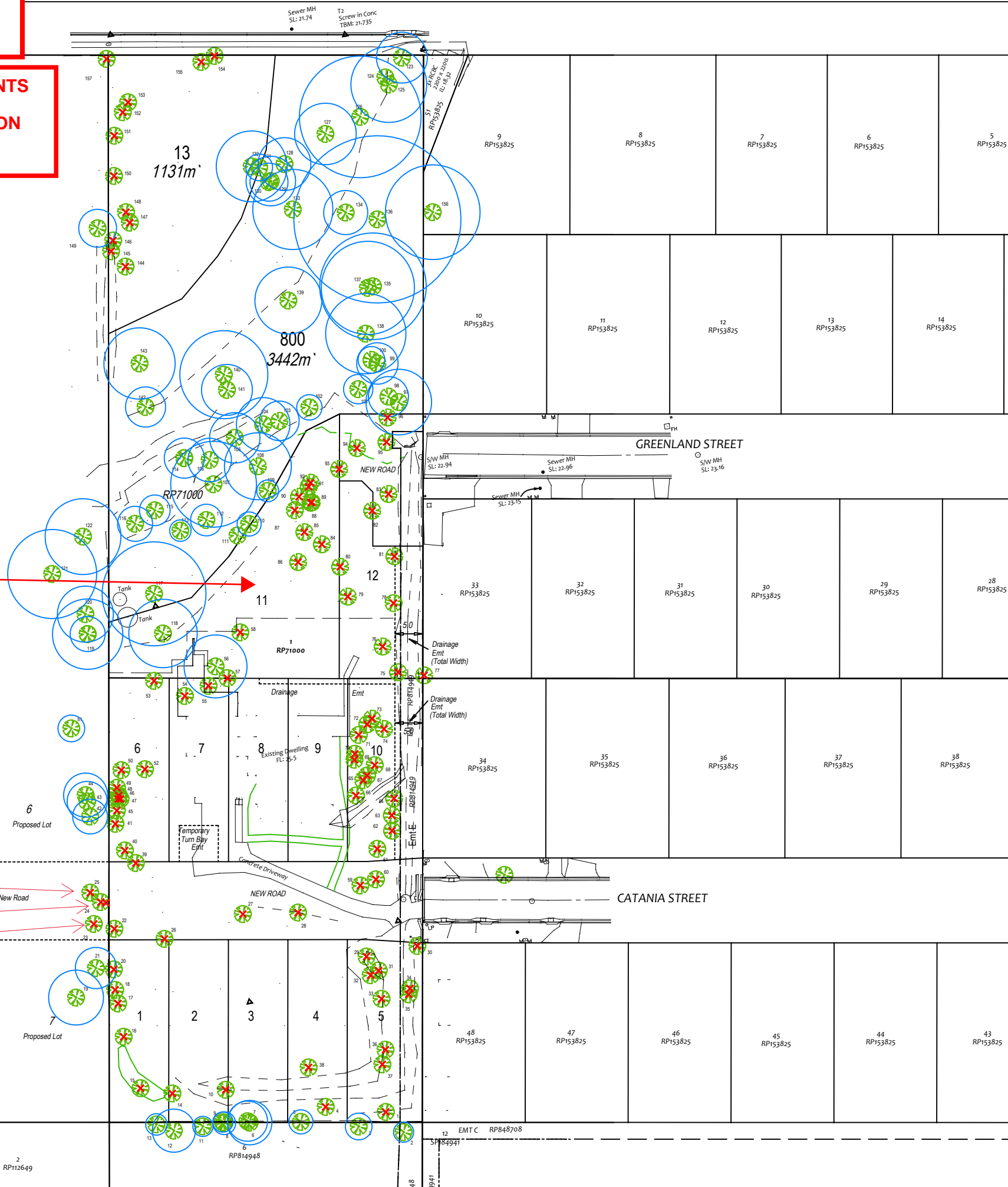
Penalties apply for non-compliance with the movement controls. If you are unsure of your obligations under the Biosecurity Act 2014 contact the relevant Queensland State Government Department.

Refer to approved Proposed Site Layout Plan (drawing CWD-12102-OP-004 Revision A) as amended in red 25/05/2023 for extent of Development Footprint Plan (DFP) for Lot 11.

An Arborist Report prepared by a qualified professional (minimum AQF level 5 in Arboriculture) must be submitted as part of any Operational Works application to support any works proposed within the Tree Protection Zones of trees to be retained.

Any trees located outside the property boundaries do not form part of this Development Approval.

Trees 23, 24, 25 are approved for removal under a neighbouring DA. Ref:A006042786



**LEGEND / NOTES**

- Tree Numbering
- Tree Protection Zone Retained Tree
- Tree To Be Removed
- Tree To Be Retained (Subject To Arborist Inspection)

**BCC DS**  
**RECEIVED**  
28/04/23  
**APPLICATION REF**  
A005867462

NOTE:  
- SURVEY PLAN



The ideas, information and concepts contained in this document are the property of S5 Consulting. Photocopying or reproducing this document and passing it on to others without the express permission of S5 Consulting is an infringement of copyright and is a breach of S5 Consulting rights under the Commonwealth Copyright Act 1968 [Section 10].

ISSUE	DESCRIPTION	DATE
A	DRAFT	05/04/2023
B	FOR ISSUE	21/04/2023

PROJECT NO.  
S523034

CLIENT  
PETER GILMER

PROJECT NAME  
PROPOSED SUBDIVISION

SITE  
381 BROADWATER ROAD  
MANSFIELD

DRAWING NAME  
Tree Retention Plan

DRAWING NO.  
S523034\_VMP\_001

SCALE	SHEET SIZE	DRAWN	APPROVED
1:800	A3	SAJ	RS

2/265 Sandgate Road  
Albion Qld 4010  
ph 3505 3053  
www.s5consulting.com.au  
ABN 82 440 704 793



**ENVIRONMENTAL**

VEGETATION MANAGEMENT SCHEDULE																		
Site Address: 381 Broadwater Road, MANSFIELD																		
Codes: FS = Fauna Scratches; SH = Small Hollow; MH = Medium Hollow; LH = Large Hollow; T = Termitaria; BN = Bird Nest; DL = Double leader; TL = Triple Leader; ML = Multi-leader; NB = Nest Box, SF = Evidence of Sap Feeding																		
No.	STATUS	SCIENTIFIC NAME	COMMON NAME	DBH 1 [mm]	DBH 2 [mm]	DBH 3 [mm]	DBH 4 [mm]	DBH 5 [mm]	DBH 6 [mm]	Total DBH [mm]	SPREAD [m]	HEIGHT [m]	HEALTH	FORM	HABITAT	NOTES	TPZ [mm]	
1	Remove	<i>Corymbia intermedia</i>	Pink Bloodwood	295						295	7	10	Good	Typical	T		3540	
2	Retain	<i>Stenocarpus sinuatus</i>	Firewheel Tree	150						150	2	8	Good	Typical		off site	1800	
3	Retain	<i>Archontophoenix alexandrae</i>	Alexandra Palm	200						200	9	10	Good	Typical		fruiting , off site	2400	
4	Remove	<i>Eucalyptus crebra</i>	Narrow-leaved Ironbark	650						650	12	15.5	Good	Typical	T		7800	
5	Retain	<i>Eucalyptus resinifera</i>	Red Mahogany	180						180	4	7.5	Good	Typical		off site	2160	
6	Retain	<i>Azadirachta indica</i>	Neem	110	150	275				333	7	7	Good	Typical		off site	3996	
7	Retain	<i>Grevillea robusta</i>	Silky Oak	300						300	7	14	Good	Typical		arrow vine	3600	
8	Retain	<i>Lophostemon suaveolens</i>	Swamp Box	170						170	2	11	Poor	Typical		off site	2040	
9	Retain	<i>Syagrus romanzoffiana</i>	Cocos Palm	150						150	3	10	Good	Typical		off site	1800	
10	Retain	<i>Mangifera indica</i>	Mango	65	82	43	72	78		156	6	5	Good	Typical			1872	
11	Retain	<i>Araucaria cunninghamii</i>	Hoop Pine	150						150	4	6	Good	Typical		off site	1800	
12	Retain	<i>Libidibia ferrea</i>	Leopard Tree	100	130	220	170			323	7	14	Good	Typical	FS	off site	3876	
13	Retain	<i>Araucaria cunninghamii</i>	Hoop pine	160						160	4	14	Good	Typical		off site	1920	
14	Remove	<i>Melaleuca quinquenervia</i>	Broad-leaved Paperbark	285						285	8	13	Poor	Typical	BN		3420	
15	Remove	<i>Ficus obliqua</i>	Small Leafed Fig	113	160	165	170			308	6	13	Good	Typical			3696	
16	Remove	<i>Lophostemon suaveolens</i>	Swamp Box	195						195	4	9.5	Good	Typical			2340	
17	Remove	<i>Eucalyptus seeana</i>	Narrow-leaved Red Gum	465						465	7	16.5	Good	Typical	FS		5580	
18	Remove	<i>Lophostemon suaveolens</i>	Swamp Box	300						300	7	13	Good	Typical			3600	
19	Retain	<i>Delonix regia</i>	Poinciana	410						410	10	8	Good	Typical		off site	4920	
20	Remove	<i>Lophostemon suaveolens</i>	Swamp Box	200	175					266	6	9	Good	Typical			3192	
21	Retain	<i>Cinnamomum camphora</i>	Camphor Laurel	210	160	160				309	7	7	Good	Typical			3708	
22	Remove	<i>Lophostemon suaveolens</i>	Swamp Box	245						245	4	11	Good	Typical			2940	
23	Remove	<i>Melaleuca quinquenervia</i>	Broad-leaved Paperbark	430						430	6	8	Good	Typical		off site	5160	
24	Remove	<i>Pinus sp.</i>	Slash Pine	580						580	8	15.5	Good	Typical		off site	6960	
25	Remove	<i>Melaleuca quinquenervia</i>	Broad-leaved Paperbark	490						490	6	10	Good	Leaning		off site	5880	
26	Remove	<i>Ficus macrophylla</i>	Moreton Bay Fig	250	315					403	12	14	Good	Typical			4836	
27	Remove	<i>Corymbia intermedia</i>	Pink Bloodwood	500						500	8	13.5	Good	Typical		middle of lawn	6000	
28	Remove	<i>Jacaranda mimosifolia</i>	Jacaranda	120	115	120	165			264	5	6	Poor	Typical		middle of lawn	3168	
29	Remove	<i>Libidibia ferrea</i>	Leopard Tree	340						340	6	12	Good	Typical	FS		4080	
30	Remove	<i>Melaleuca quinquenervia</i>	Broad-leaved Paperbark	560						560	5	9	Fair	Typical		next to driveway	6720	
31	Remove	<i>Corymbia intermedia</i>	Pink Bloodwood	415						415	5	9	Good	Typical			4980	
32	Remove	<i>Melaleuca quinquenervia</i>	Broad-leaved Paperbark	365						365	5	9	Good	Typical			4380	
33	Remove	<i>Lophostemon confertus</i>	Brush Box	220						220	6	8	Fair	Typical	FS		2640	
34	Remove	<i>Eucalyptus propinqua</i>	Grey Gum	500						500	8	17	Good	Typical	FS		6000	
35	Remove	<i>Melaleuca quinquenervia</i>	Broad-leaved Paperbark	425						425	6	12	Good	Typical			5100	
36	Remove	<i>Grevillea robusta</i>	Silky Oak	290						290	6	11	Good	Typical			3480	
37	Remove	<i>Grevillea robusta</i>	Silky Oak	290						290	6	13	Good	Typical			3480	
38	Remove	<i>Lophostemon confertus</i>	Brush Box	210						210	5	8	Good	Typical			2520	
39	Remove	<i>Libidibia ferrea</i>	Leopard Tree	110	90					143	4	6	Poor	Typical	FS	garden next to shipping container	1716	
40	Remove	<i>Lophostemon suaveolens</i>	Swamp Box	255	170					307	8	9.5	Good	Typical			3684	
41	Remove	<i>Lophostemon suaveolens</i>	Swamp Box	190						190	5	11	Good	Typical			2280	
42	Retain	<i>Cinnamomum camphora</i>	Camphor Laurel	260						260	8	10	Good	Typical			3120	
43	Retain	<i>Cinnamomum camphora</i>	Camphor Laurel	300						300	11	11.5	Good	Typical		off site	3600	
44	Retain	<i>Eucalyptus propinqua</i>	Grey Gum	330						330	6	12	Good	Typical		off site. vine covered	3960	
45	Remove	<i>Lophostemon suaveolens</i>	Swamp Box	170						170	3	9	Good	Typical			2040	
46	Remove	<i>Lophostemon suaveolens</i>	Swamp Box	130						130	5	8	Fair	Leaning			1560	
47	Remove	<i>Syzygium sp.</i>	Lilly Pilly	100	150					181	5	6	Poor	Typical			2172	
48	Remove	<i>Lophostemon suaveolens</i>	Swamp Box	145						145	4	9	Good	Typical			1740	
49	Remove	<i>Lophostemon suaveolens</i>	Swamp Box	180						180	6	9	Good	Typical			2160	
50	Remove	<i>Lophostemon suaveolens</i>	Swamp Box	185						185	4	10	Good	Typical			2220	
51	Retain	<i>Eucalyptus propinqua</i>	Grey Gum	200						200	6	13	Fair	Typical		off site. vine covered. behind shed.	2400	
52	Remove	<i>Eucalyptus microcorys</i>	Tallowwood	580						580	12	23.5	Good	Typical		back garden house	6960	
53	Remove	<i>Eucalyptus microcorys</i>	Tallowwood	590						590	10	23	Good	Typical		back garden house	7080	
54	Remove	<i>Eucalyptus microcorys</i>	Tallowwood	560						560	8	25	Good	Typical		back garden house	6720	
55	Remove	<i>Eucalyptus microcorys</i>	Tallowwood	375						375	8	25	Good	Typical		back garden house	4500	
56	Retain	<i>Eucalyptus microcorys</i>	Tallowwood	470						470	9	23	Good	Typical		back garden house	5640	
57	Remove	<i>Eucalyptus microcorys</i>	Tallowwood	400						400	7	23	Good	Typical		back garden house	4800	
58	Remove	<i>Delonix regia</i>	Poinciana	410						410	10	14	Good	Typical		back garden house. Epiphyte	4920	
59	Remove	<i>Libidibia ferrea</i>	Leopard Tree	130	120	110				209	5	7	Good	Typical		next to driveway	2508	
60	Remove	<i>Buckinghamia celsissima</i>	Ivory Curl	90	175	175				264	5	8	Good	Typical		next to driveway	3168	

LEGEND / NOTES

**PLANS AND DOCUMENTS**  
referred to in the  
**NEGOTIATED DECISION**

Dated: 25/05/2023

**BCC DS**  
**RECEIVED**  
28/04/23  
**APPLICATION REF**  
A005867462

NOTE:  
- SURVEY PLAN



The ideas, information and concepts contained in this document are the property of S5 Consulting. Photocopying or reproducing this document and passing it on to others without the express permission of S5 Consulting is an infringement of copyright and is a breach of S5 Consulting rights under the Commonwealth Copyright Act 1968 (Section 10).

ISSUE	DESCRIPTION	DATE
B	FOR ISSUE	21/04/2023

PROJECT NO.  
**S523034**

CLIENT  
**PETER GILMER**

PROJECT NAME  
**PROPOSED SUBDIVISION**

SITE  
**381 BROADWATER ROAD  
MANSFIELD**

DRAWING NAME  
**Tree Retention Plan**  
- SCHEDULE SHEET 1 OF 3

DRAWING NO.  
**S523034\_VMP\_006**

SCALE	SHEET SIZE	DRAWN	APPROVED
N.T.S.	A3	SAJ	RS

2/265 Sandgate Road  
Albion Qld 4010  
ph 3505 3053  
www.s5consulting.com.au  
ABN 82 440 704 793



**ENVIRONMENTAL**

VEGETATION MANAGEMENT SCHEDULE

Site Address: 381 Broadwater Road, MANSFIELD

Codes: FS = Fauna Scratches; SH = Small Hollow; MH = Medium Hollow; LH = Large Hollow; T = Termitaria; BN = Bird Nest; DL = Double leader; TL = Triple Leader; ML = Multi-leader; NB = Nest Box; SF = Evidence of Sap Feeding

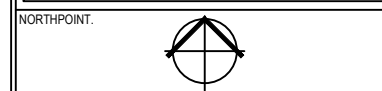
No.	STATUS	SCIENTIFIC NAME	COMMON NAME	DBH 1 [mm]	DBH 2 [mm]	DBH 3 [mm]	DBH 4 [mm]	DBH 5 [mm]	DBH 6 [mm]	Total DBH [mm]	SPREAD [m]	HEIGHT [m]	HEALTH	FORM	HABITAT	NOTES	TPZ [mm]
61	Remove	<i>Syzigium sp.</i>	Lilly Pilly	100	120	110				192	3	5	Good	Typical		next to driveway	2304
62	Remove	<i>Syzigium sp.</i>	Lilly Pilly	80	80	80	70	100		185	3	5	Good	Typical		next to driveway	2220
63	Remove	<i>Syzigium sp.</i>	Lilly Pilly	90	100	40				141	3	5	Good	Typical		next to driveway	1692
64	Remove	<i>Syzigium sp.</i>	Lilly Pilly	50	40	30	60			93	3	5	Good	Typical		next to driveway	1116
65	Remove	<i>Lophostemon suaveolens</i>	Swamp Box	175						175	4	8	Good	Typical			2100
66	Remove	<i>Lophostemon suaveolens</i>	Swamp Box	265						265	5	14	Good	Typical			3180
67	Remove	<i>Eucalyptus microcorys</i>	Tallowwood	470						470	10	16	Good	Leaning			5640
68	Remove	<i>Corymbia intermedia</i>	Pink Bloodwood	260	300					397	5	13	Good	Typical			4764
69	Remove	<i>Lophostemon suaveolens</i>	Swamp Box	210						210	4	10	Good	Typical		arrow vine	2520
70	Remove	<i>Lophostemon suaveolens</i>	Swamp Box	220						220	4	10	Good	Typical		arrow vine	2640
71	Remove	<i>Eucalyptus microcorys</i>	Tallowwood	275						275	6	17	Good	Typical		bromeliads on trunk	3300
72	Remove	<i>Corymbia intermedia</i>	Pink Bloodwood	260						260	8	18	Good	Typical			3120
73	Remove	<i>Melaleuca quinquenervia</i>	Broad-leaved Paperbark	220	175					282	6	8	Good	Typical			3384
74	Remove	<i>Melaleuca quinquenervia</i>	Broad-leaved Paperbark	280	290	200				450	6	12	Good	Typical		dragonfruit vine	5400
75	Remove	<i>Lophostemon suaveolens</i>	Swamp Box	260						260	4	8	Good	Typical			3120
76	Remove	<i>Corymbia intermedia</i>	Pink Bloodwood	420						420	8	11	Good	Typical			5040
77	Remove	<i>Brugmansia sp.</i>	Angel's Trumpet	100	120	50	40			169	4	6	Good	Typical		off site	2028
78	Remove	<i>Plumeria sp.</i>	Frangipani	130	80	100				183	6	5	Good	Typical		northern side of pool fencing	2196
79	Remove	<i>Corymbia torelliana</i>	Cadaghi	600						600	9	12	Good	Typical			7200
80	Remove	<i>Eucalyptus propinqua</i>	Grey Gum	440						440	8	12	Good	Typical	FS	next to bee hives	5280
81	Remove	<i>Lophostemon suaveolens</i>	Swamp Box	290						290	7	9	Good	Typical			3480
82	Remove	<i>Corymbia intermedia</i>	Pink Bloodwood	340						340	7	13	Good	Typical		monkey rope	4080
83	Remove	<i>Grevillea robusta</i>	Silky Oak	320						320	6	12	Good	Typical			3840
84	Remove	<i>Corymbia intermedia</i>	Pink Bloodwood	340						340	5	12	Good	Typical		next to bee hives	4080
85	Remove	<i>Grevillea robusta</i>	Silky Oak	240						240	3	12	Good	Typical			2880
86	Remove	<i>Corymbia torelliana</i>	Cadaghi	450						450	10	14	Good	Typical	FS		5400
87	Remove	<i>Schefflera actinophylla</i>	Umbrella Tree	80	90	110	90	80	80	218	4	6	Good	Typical			2616
88	Remove	<i>Eucalyptus propinqua</i>	Grey Gum	120						120	6	12	Good	Typical	FS	stump	1440
89	Remove	<i>Corymbia intermedia</i>	Pink Bloodwood	200						200	8	12	Good	Typical		devils ivy vine	2400
90	Remove	<i>Allocasurina litoralis</i>	Forest She-oak	210						210	5	10	Fair	Typical			2520
91	Remove	<i>Corymbia intermedia</i>	Pink Bloodwood	280	180					333	7	14	Good	Typical		next to bee hives	3996
92	Remove	<i>Eucalyptus crebra</i>	Narrow-leaved Ironbark	410						410	7	14	Good	Typical		next to bee hives	4920
93	Remove	<i>Corymbia intermedia</i>	Pink Bloodwood	430						430	10	15	Good	Typical			5160
94	Remove		Slag	280						280	4	14	Dead	Typical			0
95	Remove	<i>Eucalyptus microcorys</i>	Tallowwood	500						500	12	14	Good	Typical		overhanging road, monkey rope	6000
96	Remove	<i>Livistona australis</i>	Cabbage Palm	280						280	2	13	Good	Typical		within creekline near fence	3360
97	Retain	<i>Pinus sp.</i>	Slash Pine	490						490	7	14	Good	Typical		within creekline near fence	5880
98	Retain	<i>Pinus sp.</i>	Slash Pine	300						300	8	14	Good	Typical		within creekline near fence	3600
99	Retain	<i>Pinus sp.</i>	Slash Pine	310						310	6	13	Good	Typical		within creekline near fence	3720
100	Retain	<i>Pinus sp.</i>	Slash Pine	200						200	4	12	Good	Typical		within creekline near fence	2400
101	Retain	<i>Melaleuca quinquenervia</i>	Broad-leaved Paperbark	220						220	7	10	Good	Typical		100	2640
102	Retain	<i>Acacia leiocalyx</i>	Early Black Wattle	190						190	6	8	Good	Typical			2280
103	Retain	<i>Spathodea campanulata</i>	Broad-leaved Pepper Tree	210	190	80				295	8	9	Good	Typical			3540
104	Retain	<i>Melaleuca quinquenervia</i>	Broad-leaved Paperbark	400						400	9	9	Good	Typical		overhanging creek, southside	4800
105	Retain	<i>Spathodea campanulata</i>	Broad-leaved Pepper Tree	200	120	90	280			376	6	10	Good	Typical		overhanging creek, southside	4512
106	Retain	<i>Ficus obliqua</i>	Small-leaved Fig	210	190	110	80	80		325	11	11	Good	Typical		overhanging creek, southside	3900
107	Retain	<i>Ficus obliqua</i>	Small-leaved Fig	200	610					642	15	14	Good	Typical			7704
108	Retain	<i>Lophostemon suaveolens</i>	Swamp Box	500						500	6	12	Fair	Typical	MH		6000
109	Retain	<i>Ficus obliqua</i>	Small-leaved Fig	90	20	50	30	120		163	7	8	Good	Typical			1956
110	Retain	<i>Allocasurina litoralis</i>	Forest She-oak	180						180	2	9	Fair	Typical			2160
111	Retain		Slag	180						180	2	9	Dead	Typical			0
112	Retain	<i>Ficus obliqua</i>	Small-leaved Fig	140	140	130				237	10	11	Good	Typical			2844
113	Retain	<i>Jacaranda mimosifolia</i>	Australian Indigo	160						160	5	10	Fair	Typical			1920
114	Retain	<i>Delonix regia</i>	Poinciana	300						300	7	13	Good	Typical			3600
115	Retain	<i>Jacaranda mimosifolia</i>	Australian Indigo	140	180					229	8	8	Good	Typical			2748
116	Retain	<i>Ficus obliqua</i>	Small-leaved Fig	190	180					262	11	10	Good	Typical			3144
117	Retain	<i>Delonix regia</i>	Poinciana	490	450	400				777	15	16	Good	Typical	FS	next to water tanks	9324
118	Retain	<i>Jacaranda mimosifolia</i>	Australian Indigo	290	420					511	11	14	Good	Typical			6132
119	Retain	<i>Ficus macrophylla</i>	Moreton Bay Fig	450	180	200				525	15	15	Good	Typical		off site	6300
120	Retain	<i>Ficus macrophylla</i>	Moreton Bay Fig	290	300					418	12	11	Good	Typical		off site	5016

LEGEND / NOTES

**PLANS AND DOCUMENTS**  
referred to in the  
**NEGOTIATED DECISION**  
Dated: 25/05/2023

BCC DS  
RECEIVED  
28/04/23  
APPLICATION REF  
A005867462

NOTE:  
- SURVEY PLAN



The ideas, information and concepts contained in this document are the property of S5 Consulting. Photocopying or reproducing this document and passing it on to others without the express permission of S5 Consulting is an infringement of copyright and is a breach of S5 Consulting rights under the Commonwealth Copyright Act 1968 (Section 10).

ISSUE	DESCRIPTION	DATE
B	FOR ISSUE	21/04/2023

PROJECT NO.  
S523034

CLIENT  
PETER GILMER

PROJECT NAME  
PROPOSED SUBDIVISION

SITE  
381 BROADWATER ROAD  
MANSFIELD

DRAWING NAME  
Tree Retention Plan  
- SCHEDULE SHEET 2 OF 3

SCALE	SHEET SIZE	DRAWN	APPROVED
N.T.S.	A3	SAJ	RS

2/265 Sandgate Road  
Albion Qld 4010  
ph 3505 3053  
www.s5consulting.com.au  
ABN 82 440 704 793



VEGETATION MANAGEMENT SCHEDULE																		
Site Address: 381 Broadwater Road, MANSFIELD																		
Codes: FS = Fauna Scratchbes; SH = Small Hollow; MH = Medium Hollow; LH = Large Hollow; T = Termitaria; BN = Bird Nest; DL = Double leader; TL = Triple Leader; ML = Multi-leader; NB = Nest Box; SF = Evidence of Sap Feeding																		
No.	STATUS	SCIENTIFIC NAME	COMMON NAME	DBH 1 [mm]	DBH 2 [mm]	DBH 3 [mm]	DBH 4 [mm]	DBH 5 [mm]	DBH 6 [mm]	Total DBH [mm]	SPREAD [m]	HEIGHT [m]	HEALTH	FORM	HABITAT	NOTES	TPZ [mm]	
121	Retain	<i>Jacaranda mimosifolia</i>	Australian Indigo	480	460					665	15	13	Good	Typical		off site	7980	
122	Retain	<i>Elaeocarpus grandis</i>	Blue Quandong	400	400					566	10	24	Good	Typical		off site	6792	
123	Retain	<i>Corymbia intermedia</i>	Pink Bloodwood	380						380	6	10	Poor	Typical		first tree north east corner	4560	
124	Retain		Stag	350						350	4	8	Dead	Typical	SH		0	
125	Retain	<i>Eucalyptus resinifera</i>	Red Mahogany	420	380					567	8	13	Good	Typical			6804	
126	Retain	<i>Corymbia citriodora variegata</i>	Spotted Gum	910						910	12	25	Good	Typical		amongst Singapore daisy	10920	
127	Retain	<i>Eucalyptus propinqua</i>	Grey Gum	460						460	10	25	Good	Typical			5520	
128	Retain	<i>Melaleuca quinquenervia</i>	Broad-leaved Paperbark	340	200					395	9	13	Good	Typical		monkey rope and flowering	4740	
129	Retain	<i>Melaleuca quinquenervia</i>	Broad-leaved Paperbark	300	200	80				370	4	10	Fair	Typical			4440	
130	Retain	<i>Ficus macrophylla</i>	Moreton Bay Fig	150	240					284	10	10	Good	Typical			3408	
131	Retain	<i>Melaleuca quinquenervia</i>	Broad-leaved Paperbark	200						200	4	9	Good	Typical			2400	
132	Retain	<i>Melaleuca quinquenervia</i>	Broad-leaved Paperbark	530						530	8	11	Good	Typical			6360	
133	Retain	<i>Melaleuca quinquenervia</i>	Broad-leaved Paperbark	470	370					599	6	11	Good	Typical			7188	
134	Retain	<i>Alphitonia excelsa</i>	Red Ash	330						330	7	15	Good	Typical		western side of creek	3960	
135	Retain	<i>Cinnamomum camphora</i>	Camphor Laurel	450	400	400	200	200	180	797	16	14	Good	Typical		western side of creek	9564	
136	Retain	<i>Ficus macrophylla</i>	Moreton Bay Fig	2800						2800	20	20	Good	Typical		eastern side of creek	15000	
137	Retain	<i>Melaleuca quinquenervia</i>	Broad-leaved Paperbark	350	450	400				697	9	18	Good	Typical		eastern side of creek	8364	
138	Retain	<i>Eucalyptus grandis</i>	Flooded Gum	600						600	9	26	Good	Typical		eastern side of creek	7200	
139	Retain	<i>Melaleuca quinquenervia</i>	Broad-leaved Paperbark	500						500	8	18	Good	Typical		western side of creek	6000	
140	Retain	<i>Melaleuca quinquenervia</i>	Broad-leaved Paperbark	480	450					658	7	13	Good	Typical	SH	western side of creek	7896	
141	Retain	<i>Ulmus parvifolia</i>	Chinese Elm	380						380	7	8	Good	Typical			4560	
142	Retain	<i>Corymbia intermedia</i>	Pink Bloodwood	300						300	7	10	Good	Typical		vine covered	3600	
143	Retain	<i>Melaleuca quinquenervia</i>	Broad Leaved Paperbark	440	300					533	9	9	Good	Typical			6396	
144	Remove	<i>Melaleuca quinquenervia</i>	Broad-leaved Paperbark	160						160	5	7	Good	Typical			1920	
145	Remove	<i>Eucalyptus siderophloia</i>	Grey Ironbark	600						600	10	24	Good	Typical		monkey rope	7200	
146	Remove	<i>Acacia disparrima</i>	Hickory Wattle	140	100	100	80			215	8	7	Good	Typical			2580	
147	Remove	<i>Melaleuca quinquenervia</i>	Broad-leaved Paperbark	150	210					259	7	9	Good	Typical			3108	
148	Remove	<i>Melaleuca quinquenervia</i>	Broad-leaved Paperbark	250						250	6	9	Good	Typical			3000	
149	Retain	<i>Acacia disparrima</i>	Hickory Wattle	200	200					283	6	6	Good	Typical			3396	
150	Remove	<i>Lophostemon suaveolens</i>	Swamp Box	270						270	5	10	Poor	Typical		monkey rope	3240	
151	Remove	<i>Eucalyptus siderophloia</i>	Grey Ironbark	440						440	9	20	Good	Typical			5280	
152	Remove	<i>Melaleuca quinquenervia</i>	Broad-leaved Paperbark	210						210	8	9	Good	Typical			2520	
153	Remove	<i>Corymbia citriodora variegata</i>	Spotted Gum	510						510	11	25	Good	Typical			6120	
154	Remove	<i>Eucalyptus siderophloia</i>	Grey Ironbark	370	340					503	13	24	Good	Typical			6036	
155	Remove	<i>Eucalyptus siderophloia</i>	Grey Ironbark	380	260					461	10	23	Good	Typical			5532	
156	Retain	<i>Unidentified tree sp</i>		500	500					708	6	17	Good	Typical		Off site. Large tree overhanging creek. Obscured from view.	8496	
157	Remove	<i>Lophostemon suaveolens</i>	Swamp Box	260						260	6	9	Good	Typical		front western corner, overhanging road	3120	

LEGEND / NOTES

**PLANS AND DOCUMENTS**  
referred to in the  
**NEGOTIATED DECISION**  
Dated: 25/05/2023

**BCC DS**  
**RECEIVED**  
28/04/23  
**APPLICATION REF**  
A005867462

NOTE:  
- SURVEY PLAN



The ideas, information and concepts contained in this document are the property of S5 Consulting. Photocopying or reproducing this document and passing it on to others without the express permission of S5 Consulting is an infringement of copyright and is a breach of S5 Consulting rights under the Commonwealth Copyright Act 1968 [Section 10].

ISSUE	DESCRIPTION	DATE
B	FOR ISSUE	21/04/2023

PROJECT NO.  
**S523034**

CLIENT  
**PETER GILMER**

PROJECT NAME  
**PROPOSED SUBDIVISION**

SITE  
**381 BROADWATER ROAD  
MANSFIELD**

DRAWING NAME  
**Tree Retention Plan  
- SCHEDULE SHEET 3 OF 3**

DRAWING NO.  
**S523034\_VMP\_008**

SCALE	SHEET SIZE	DRAWN	APPROVED
N.T.S.	A3	SAJ	RS

2/265 Sandgate Road  
Albion Qld 4010  
ph 3505 3053  
www.s5consulting.com.au  
ABN 82 440 704 793



**ENVIRONMENTAL**