

BCC DS
RECEIVED
08/06/2026
APPLICATION REF
A006935123

LEVANDE BULIMBA RETIREMENT LIVING

Landscape Concept - DA Minor Change

Prepared for Levande

250146

04 JUNE 2026

place
design
group.

place design group.

Australia
South East Asia
Middle East
China
Pacific Islands

Follow us on



placedesigngroup.com

Report title	Landscape Concept - DA Minor Change
Document number	250146
Prepared for	Levande
Authors	Beth Evans, Logan Pennington, Rob Waddell
Revision number	04
Revision issue date	04.06.2026
Approved	Rob Waddell
Reason for revision	Draft - DA Minor Change

Disclaimer: This report has been prepared in accordance with the scope of services described in the contract or agreement between Place Design Group Pty Ltd ACN 082 370063 and the Client. The report relies upon data, surveys, measurements and results taken at or under the particular times and conditions specified herein. Any findings, conclusions or recommendations only apply to the aforementioned circumstances and no greater reliance should be assumed or drawn by the Client. Furthermore, the report has been prepared solely for use by the Client and Place Design Group accepts no responsibility for its use by other parties.

Contents

1	INTRODUCTION	4
1.1	Overview	5
1.2	Site Context	6
2	LANDSCAPE DESIGN	9
2.1	Design Drivers	10
2.2	Landscape Opportunities	11
2.3	Landscape Site Plan	12
2.4	Detail Plan 01	14
2.5	Detail Plan 02	16
2.6	Detail Plan 03	18
2.7	Upper Levels	20
2.8	Roof Design	24
2.9	Landscape Sections and Elevations	26
2.10	Technical Design	34
2.11	Technical Design	35
2.12	Technical Design	36
2.13	Technical Design	37
2.14	Technical Design	38
2.15	Technical Design	39
2.16	Technical Design	39
2.17	Technical Design	40
3	DESIGN PALETTES	41
3.1	Materials Palette	42
3.2	Plant Palette	44
3.3	Plant Palette	46
3.4	Plant Palette	48
3.5	Plant Palette	50
3.6	Plant Palette	52

1 INTRODUCTION

1.1 Overview

Project Understanding

This Landscape Concept was prepared for a DA Minor Change planning approval for the proposed retirement development at 91 Lytton Road and 57 Andrew Street, Balmoral, which comprises of L40 RP.901885, L39 RP.901885 within Brisbane City Council. The proposed landscape concept has been designed in a way to be compatible with, and sympathetic to the residential nature of the site, and the surrounding mix of residential, commercial and industrial context.

Development Proposal

91 Lytton Road is proposed to be developed into a Retirement Living site, creating a connected, South-side, inner-city space for retirees to enjoy near the river in Brisbane. There will be vehicular and pedestrian access into the site, which will have 7 buildings and ample on site basement carparking, built in 3 stages. The proposed landscape concepts and works are to comply with the Brisbane City Council requirements and recommended



NOT TO SCALE (Source: Nearthmap 2025)

1.2 Site Context

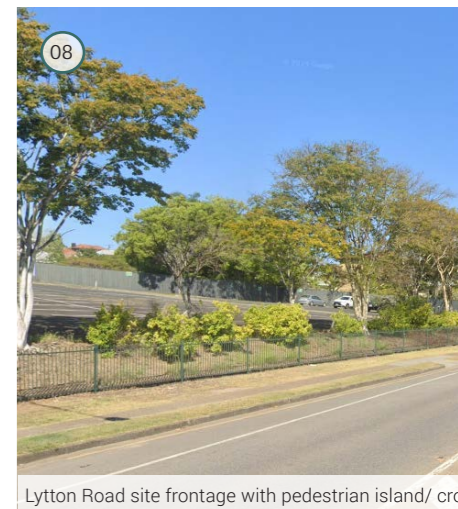
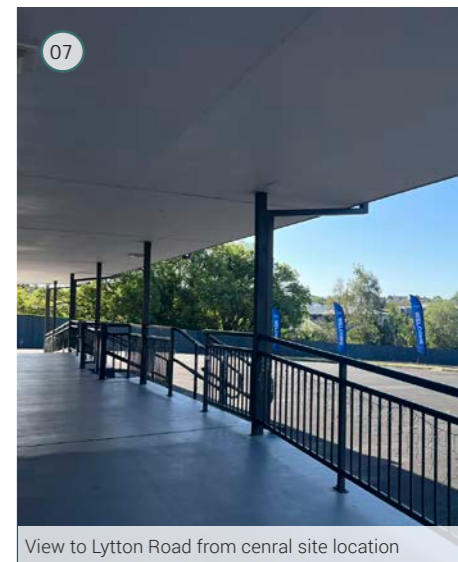
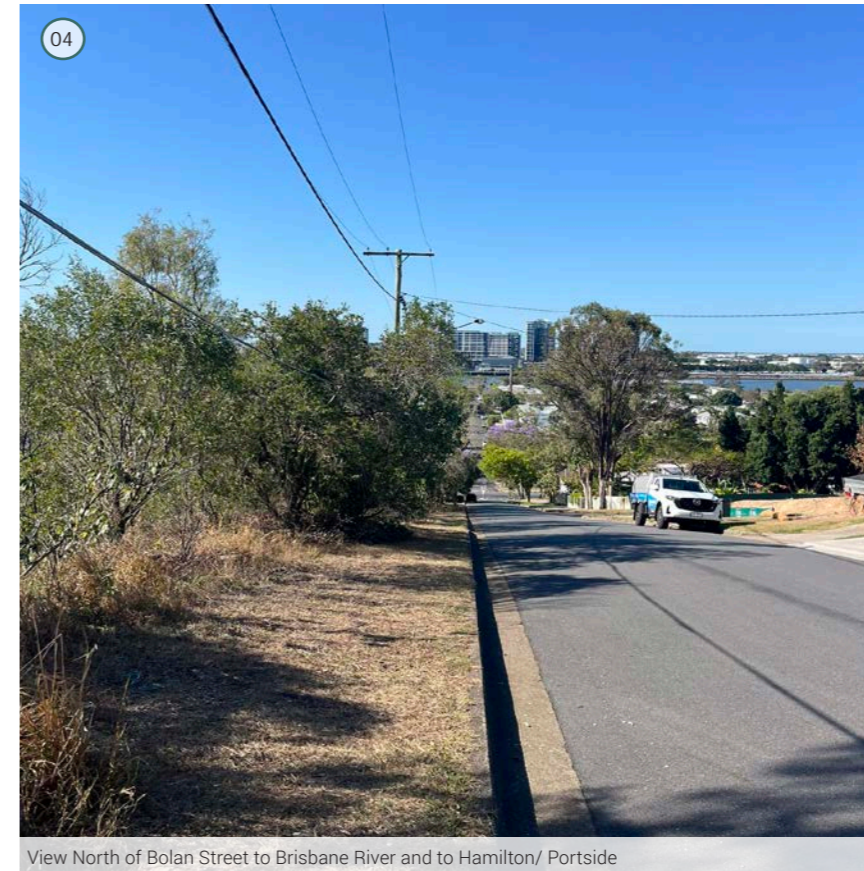
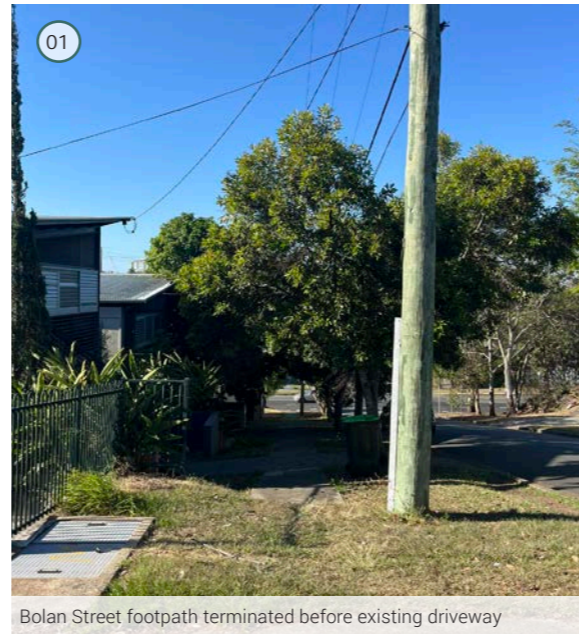
The site measures approximately 24,500m², with around 6,500m² allocated to a densely vegetated easement along the western boundary that will remain undeveloped. Primary access is provided from Lytton Road (a major connector between the CBD and the bayside) and from Bolan Street.

The site is currently dominated by asphalt car parking, which surrounds the main existing structure, a church facility. Vehicular entry points are located on both Lytton Road and Bolan Street (as shown on the plan). A significant topographic variation exists across the site, falling from 34m in the south-east (off Bolan Street) to 7m in the north-west (off Lytton Road). This substantial level change has informed the existing proposed tiered building arrangement, which steps up the hillside in response to the natural landform.

The western vegetated gully comprises a steep embankment supporting a mixture of mature trees, palms, native grasses, and some weed species. This vegetation assists in stabilising the slope and provides local habitat. Targeted rehabilitation, including weed management and supplementary native planting, would further strengthen ecological value and embankment resilience.



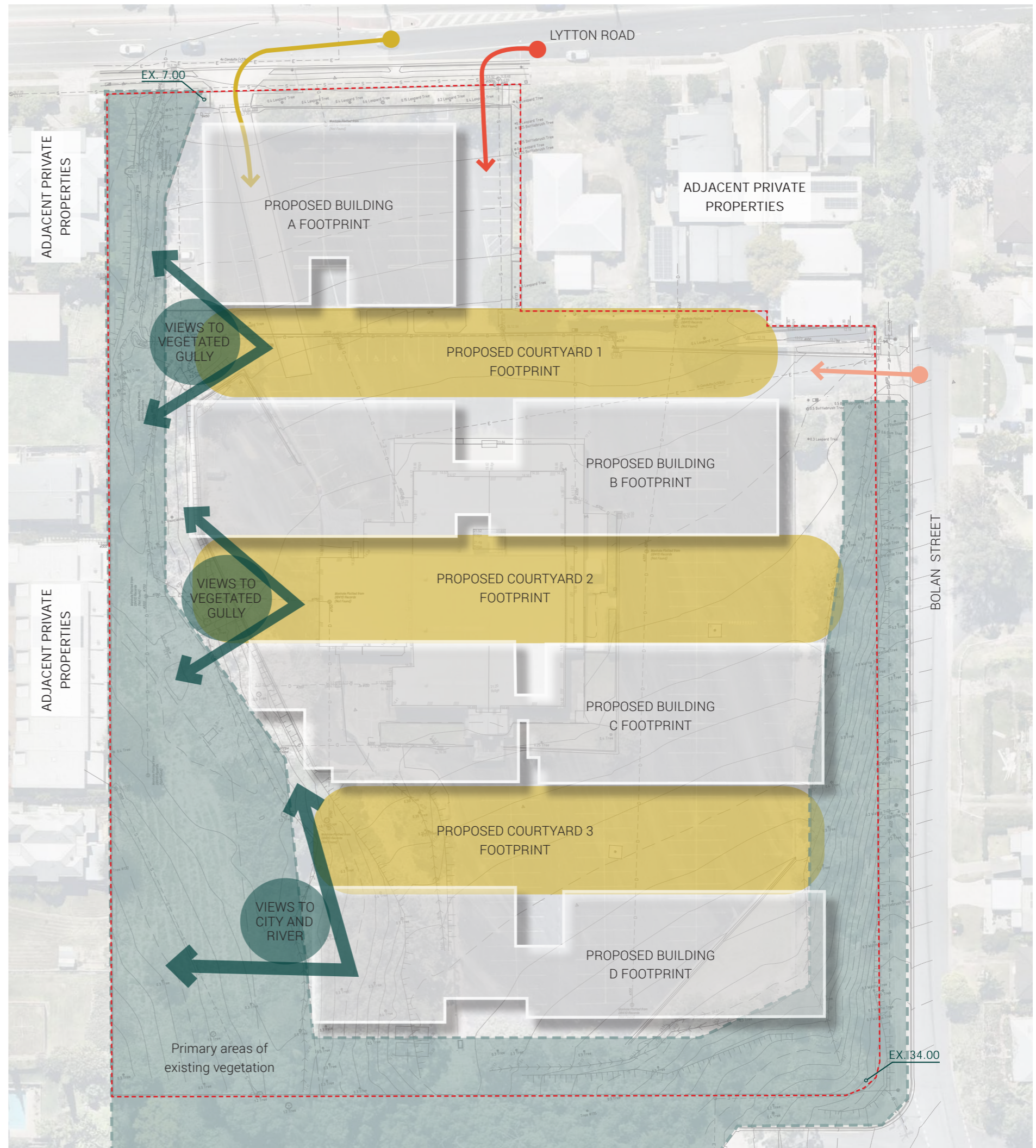
NOT TO SCALE 





LEGEND:

- Existing Access Locations
- Proposed Access Locations
- Existing and Retained Access Location
- Primary Existing Vegetation Area
- Property Boundary



SCALE
1:750@A3



2 LANDSCAPE DESIGN

2.1 Design Drivers

BUILDINGS IN THE BUSH



The buildings and the landscape will communicate and respond harmoniously together, creating a blended community which responds to its surrounds. Design interventions to strengthen the landscaped community will include tree shade to regulate building temps, water storage and roof top run-off collection, ample ground floor planting depth allowance and green roofs. Outward views from within the development are strengthened and framed in vegetation, while neighbouring residents will have screened views into the development.

COMMUNITY ON THE HILL



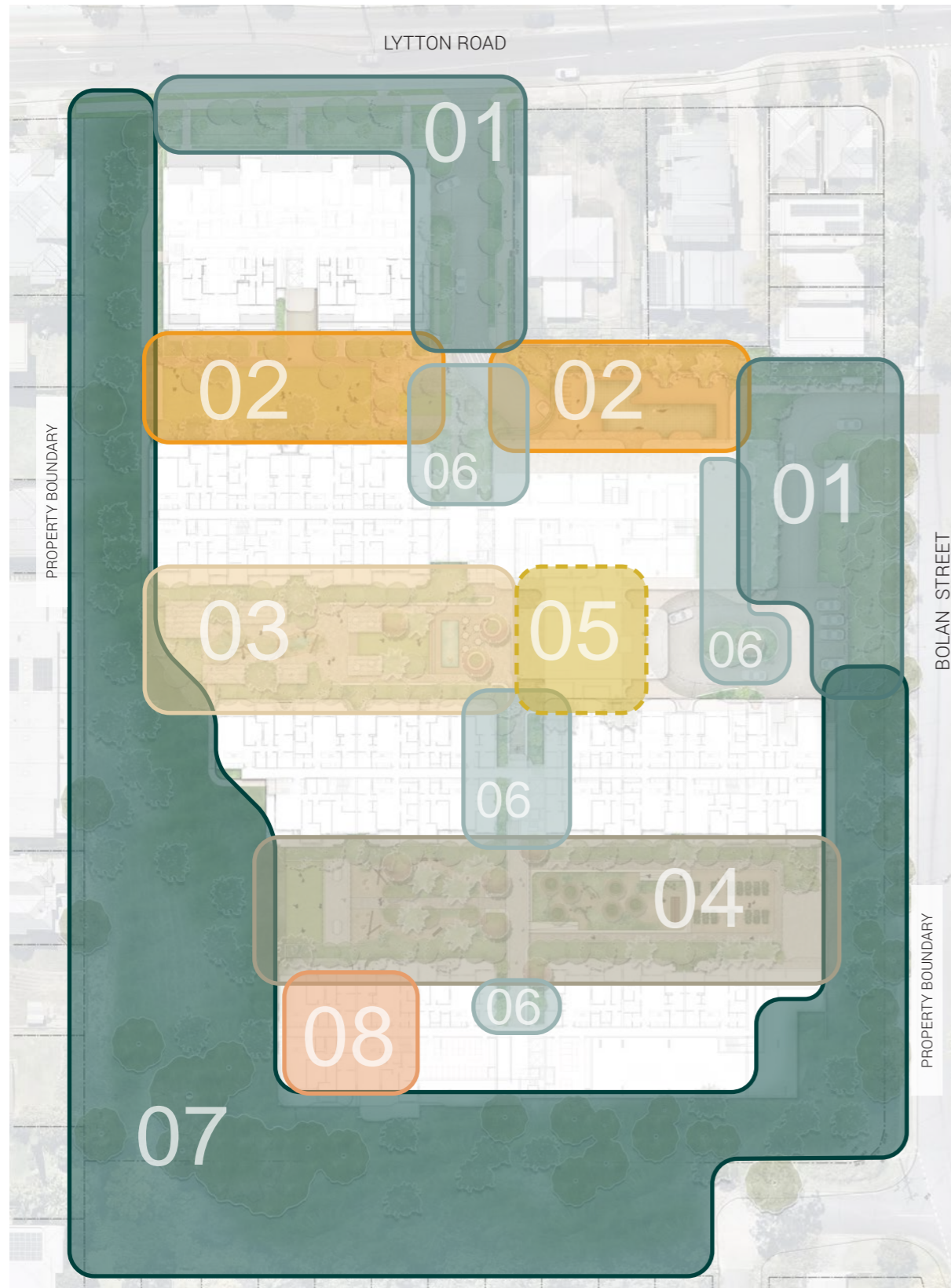
Open and inviting gathering spaces are placed on each level change throughout the development, creating various types of community activation depending on the space. These zones encourage family gathering, for those visiting to spend time together outside of private rooms. Gathering areas will create a village economy, invigorating a sense of ownership and pride in those who live and visit the development.

DISPERSION OF ELEMENTS



Throughout these gathering spaces, will be special and key 'Camp Fire' moments, spaces for people to linger and gather to strengthen their relationships within the developments community. These areas may include cases of incidental play, where play elements are entwined within the landscape.

22 Landscape Opportunities



LEGEND

ZONE	USE EXPLANATION
01	Street frontage areas and vehicular entries. (Refer Plant Palette Type B)
02	Active courtyard (courtyard 01) spaces with natural lawns, carpet bowls area, yoga lawn and lap pool. (Refer Plant Palette Type A)
03	Family courtyard (courtyard 02) with central play element and outdoor sheltered dining & incidental play. (Refer Plant Palette Type A)
04	Productive courtyard (courtyard 03) with sensory and vegetable gardens, open lawn space and sheltered dining area & incidental play. (Refer Plant Palette Type A and C)
05	Green roof with resilient, drought-proof planting (Refer Plant Palette Type D)
06	Thoroughfare zones with shade resilient plants, creating feature entries to buildings (Refer Plant Palette Type A)
07	Existing vegetation zone and revegetation/ buffer planting. (Refer Plant Palette Type B)
08	Roof terrace activation with outdoor dining, bookable spaces and views (Refer Plant Palette Type A & D)

NOT TO SCALE



23 Landscape Site Plan

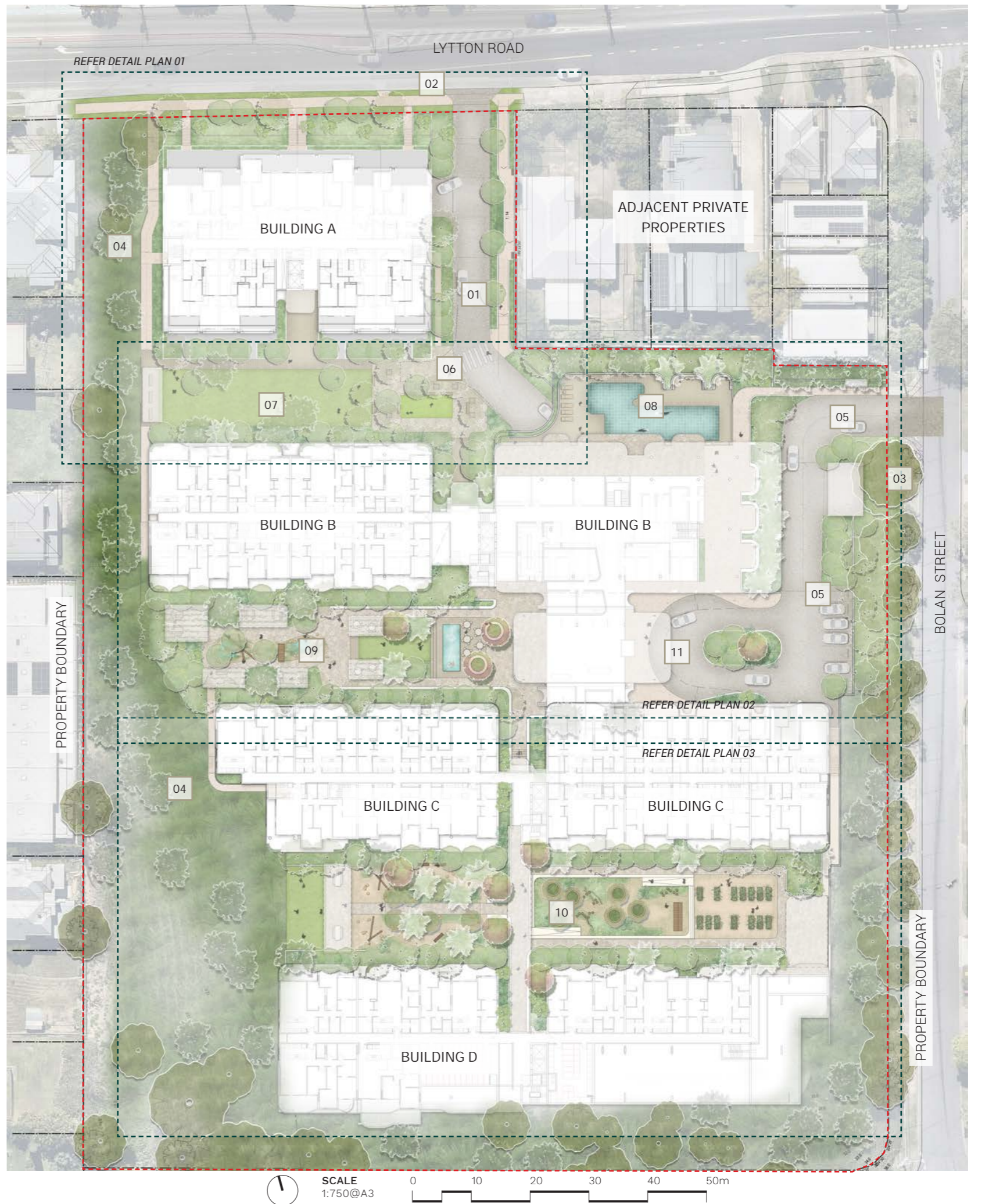
LEGEND

1. Entry off Lytton Road, driveway to below Building B
2. Lytton Road pathway to follow BCC Streetscape Hierarchy 'Neighbourhood street Major' including a 1.8m wide concrete pathway and street trees in turf
3. Bolan Street pathway to follow BCC Streetscape Hierarchy 'Neighbourhood street Minor' including a 1.3m wide concrete pathway and street trees in turf
4. Existing vegetated easement with re-vegetation in-fill
5. Vehicle/pedestrian entry off Bolan Street, with drop off area and visitor parking
6. Truck turning area
7. Level 1 - Courtyard 01
8. Level 2 - Communal Pool
9. Level 3 - Courtyard 02
10. Level 4 - Courtyard 03
11. Port Cochere



Renders by Jackson TeeceTeece Arch (Received 05.12.25)

PRECEDENT IMAGERY



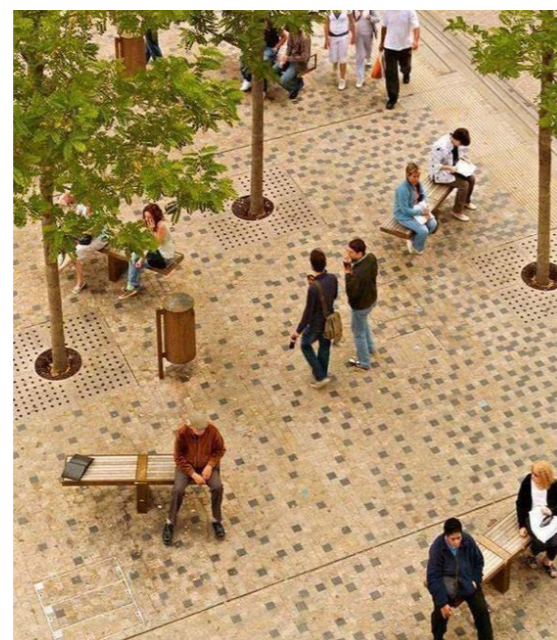
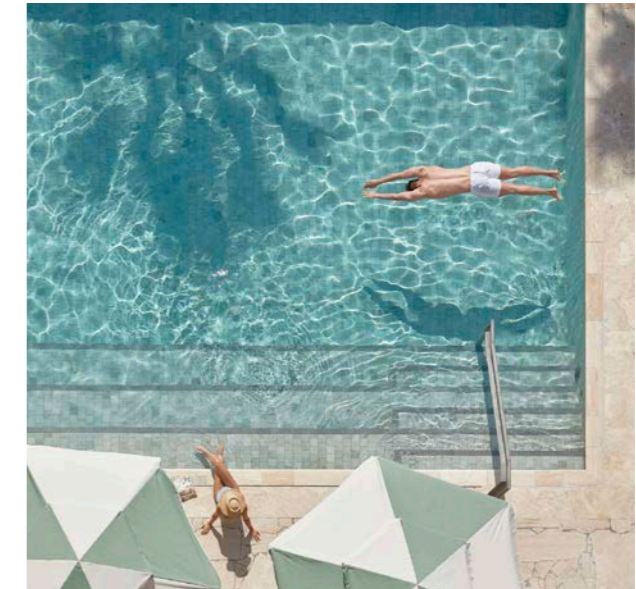
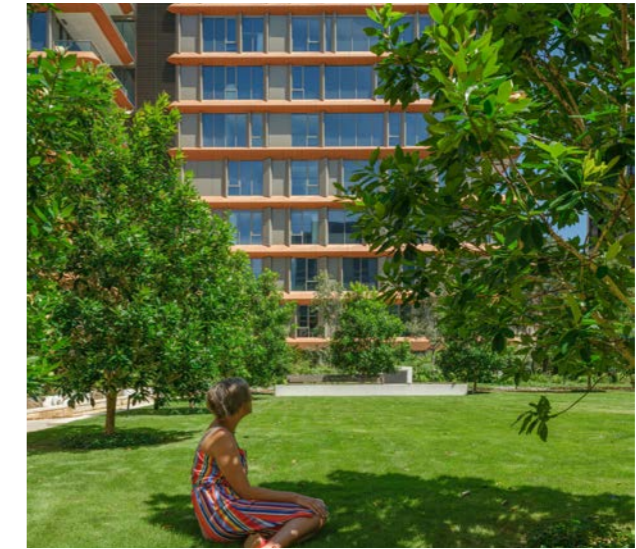
24 Detail Plan 01

24.1 Courtyard 01 (Level 1/2)

LEGEND

1. Native garden beds (deep soil)
2. Building A vehicle entry
3. Village Green/ multi-purpose lawn (deep soil)
4. Outdoor seating under shade
5. Compliant (1:16) pedestrian access ramp
6. Pedestrian crossing
7. Pool (access from L2)
8. Carpet bowls area on synthetic lawn
9. Entry plaza with trees and seating
10. Access off Lytton Road
11. Western vegetation easement retained and improved
12. Lytton Road pathway to follow BCC Streetscape Hierarchy 'Neighbourhood street Major' including a 1.8m wide concrete pathway and street trees in turf
13. Fire egress
14. Truck Turning area
15. Building A main entry
16. Building B main entry

PRECEDENT IMAGERY





LYTTON ROAD

PROPERTY BOUNDARY

BUILDING A

BUILDING B

BUILDING B

ADJACENT PRIVATE PROPERTIES

ADJACENT PRIVATE PROPERTIES

SCALE
1:300 @ A3

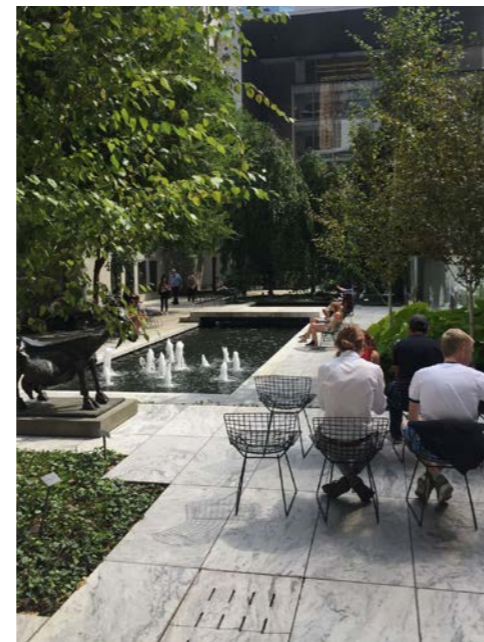


25 Detail Plan 02

25.1 Courtyard 02 (Level 3)

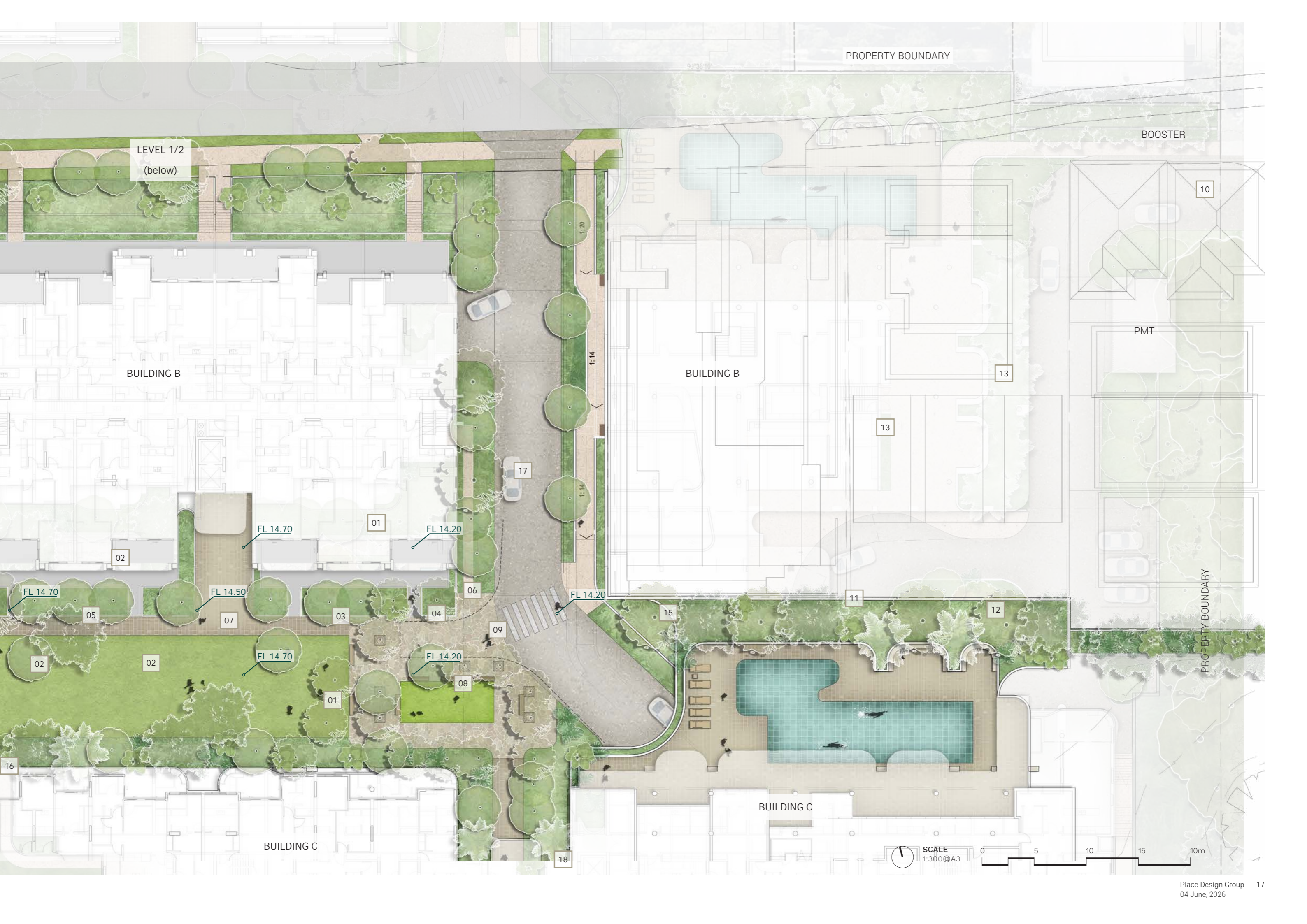
LEGEND

1. Native garden beds
2. Outdoor seating and dining under shade
3. Multi-purpose lawn
4. Raised water feature (reflection pond)
5. Water feature with bridge crossings and nature play elements
6. Lower Plaza
7. Upper Plaza
8. Raised planter seating edge
9. Feature trees in raised planter
10. Access off Bolan Street
11. Vehicle drop off and temp parking
12. Entry feature garden
13. Shaded fern garden
14. Western vegetated easement retained and improved
15. Planted green roof overhead
16. Fire egress pathway
17. Building B main entry
18. Building C main entry



PRECEDENT IMAGERY





PROPERTY BOUNDARY

BOOSTER

LEVEL 1/2
(below)

10

PMT

BUILDING B

BUILDING B

13

13

17

FL 14.70

01

FL 14.20

02

FL 14.70

05

FL 14.50

07

03

04

06

FL 14.20

11

12

02

02

FL 14.70

01

FL 14.20

08

09

15

16

BUILDING C

BUILDING C

18



SCALE
1:300 @ A3

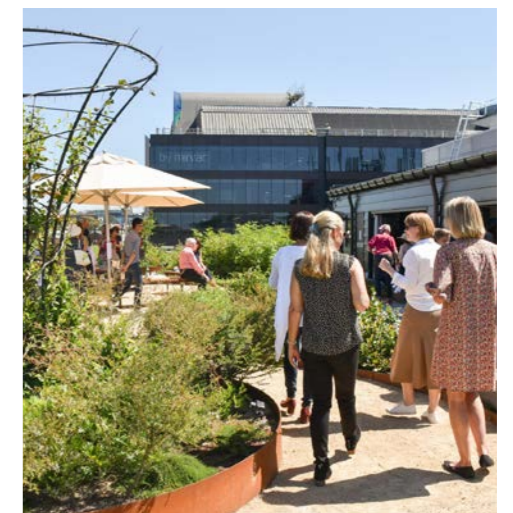
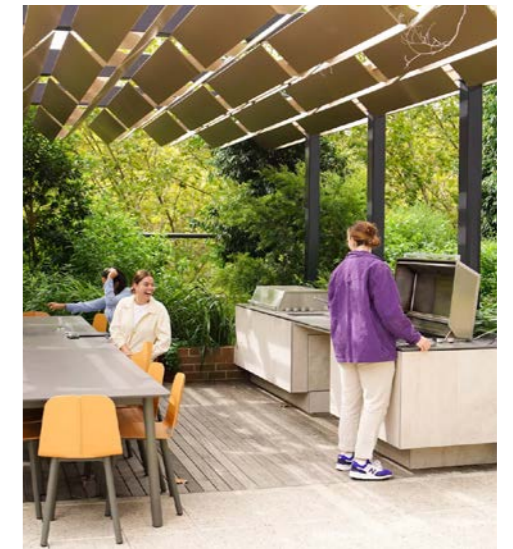
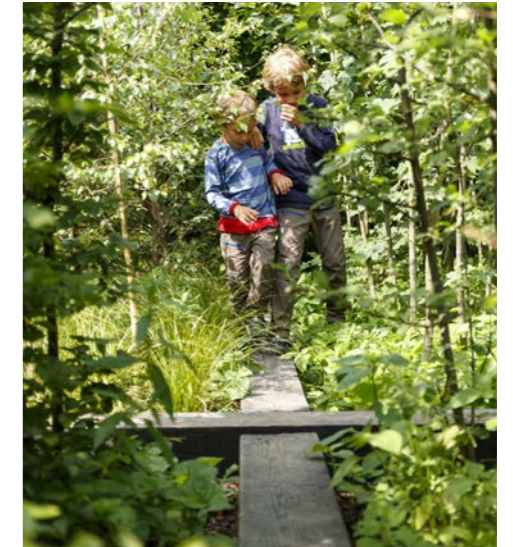


26 Detail Plan 03

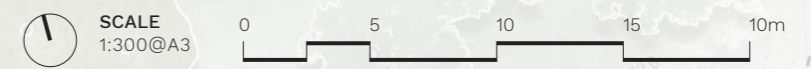
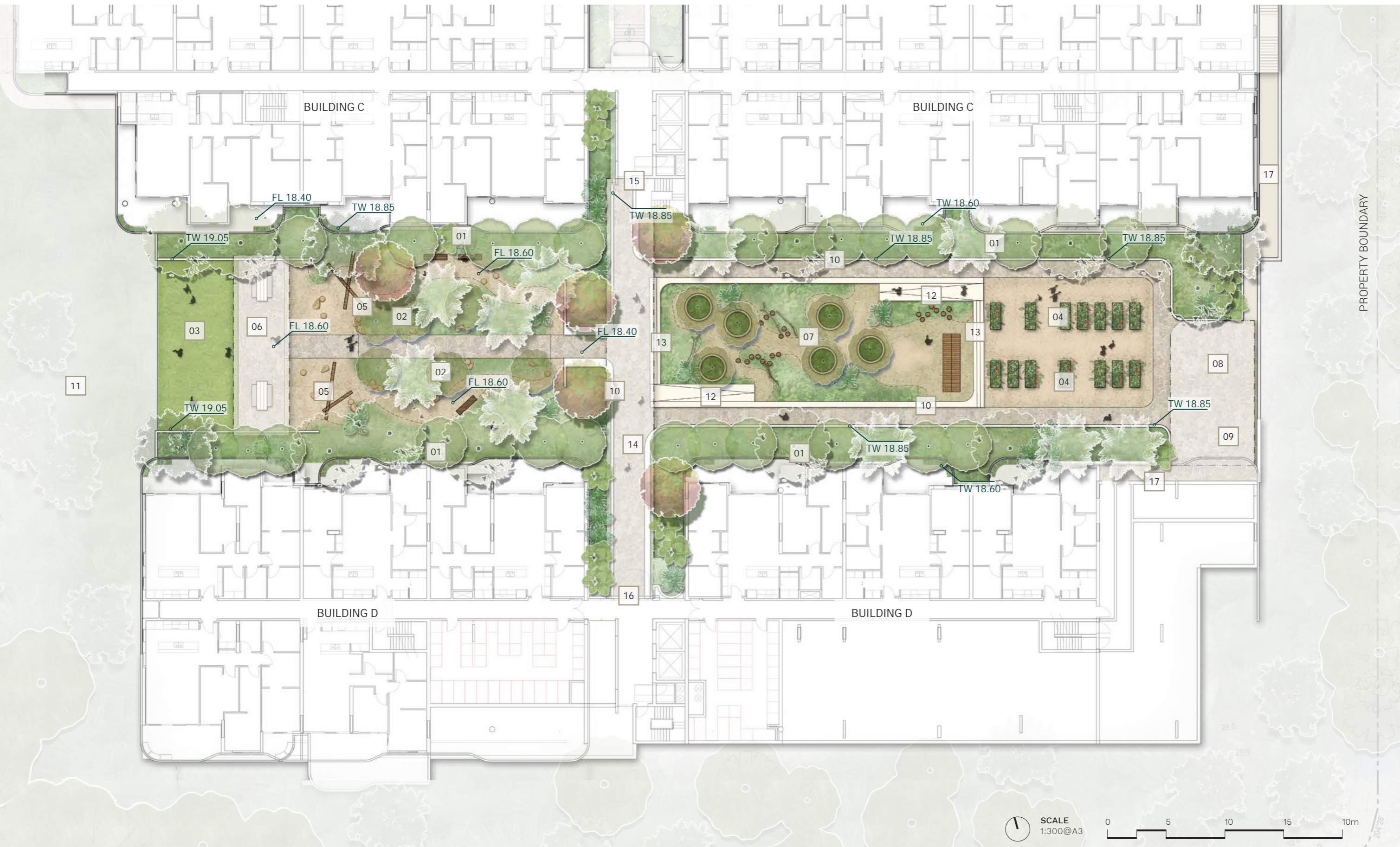
26.1 Courtyard 03 (Level 4)

LEGEND

1. Native garden beds
2. Sensory garden / food forest
3. Multi-purpose lawn
4. Community Veggie Garden
5. Nature Play
6. BBQ area with seats and tables under shade
7. Fruit trees and bush tucker garden
8. Lock up shed (communal)
9. Outdoor covered work area (communal) with green roof
10. Raised seating edge
11. Western vegetated easement retained and improved
12. Access ramp
13. Access stair
14. Shade Structure linking Building C and D
15. Building C main entry
16. Building D main entry
17. Fire egress



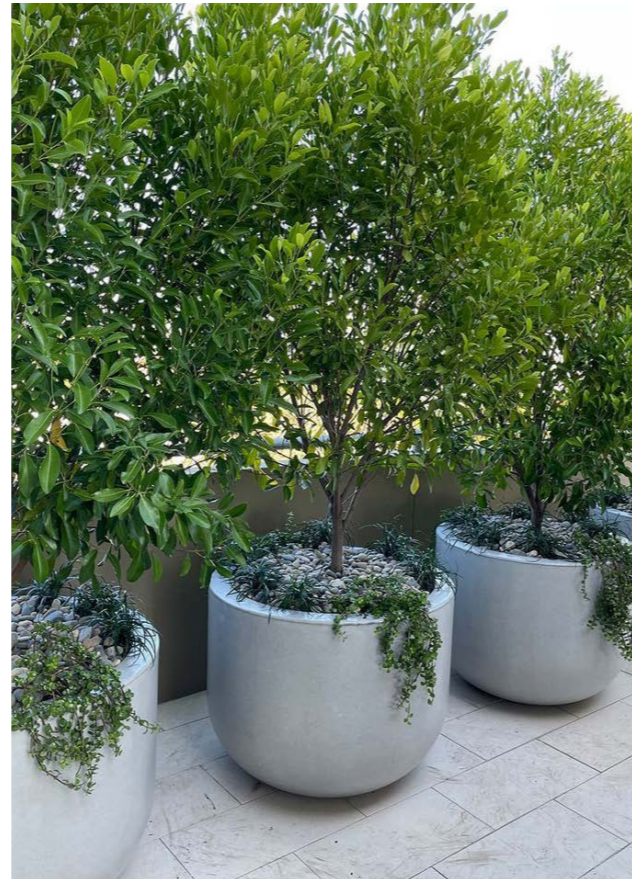
PRECEDENT IMAGERY



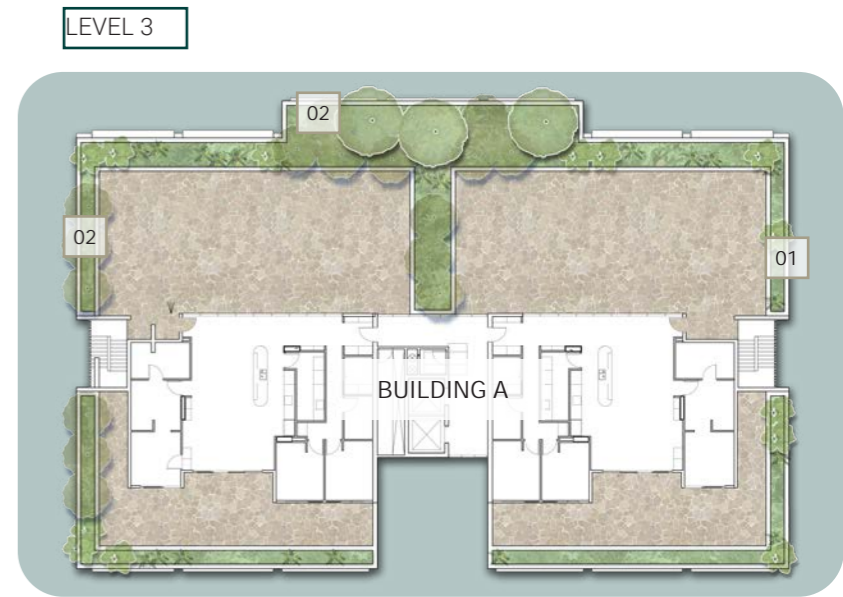
2.7 Upper Levels

2.7.1 Levels 3 - 9

Planting on upper levels will be selected to be drought tolerant and low-maintenance, and will aid in screening Western sun impacts and in providing general greening amenity.

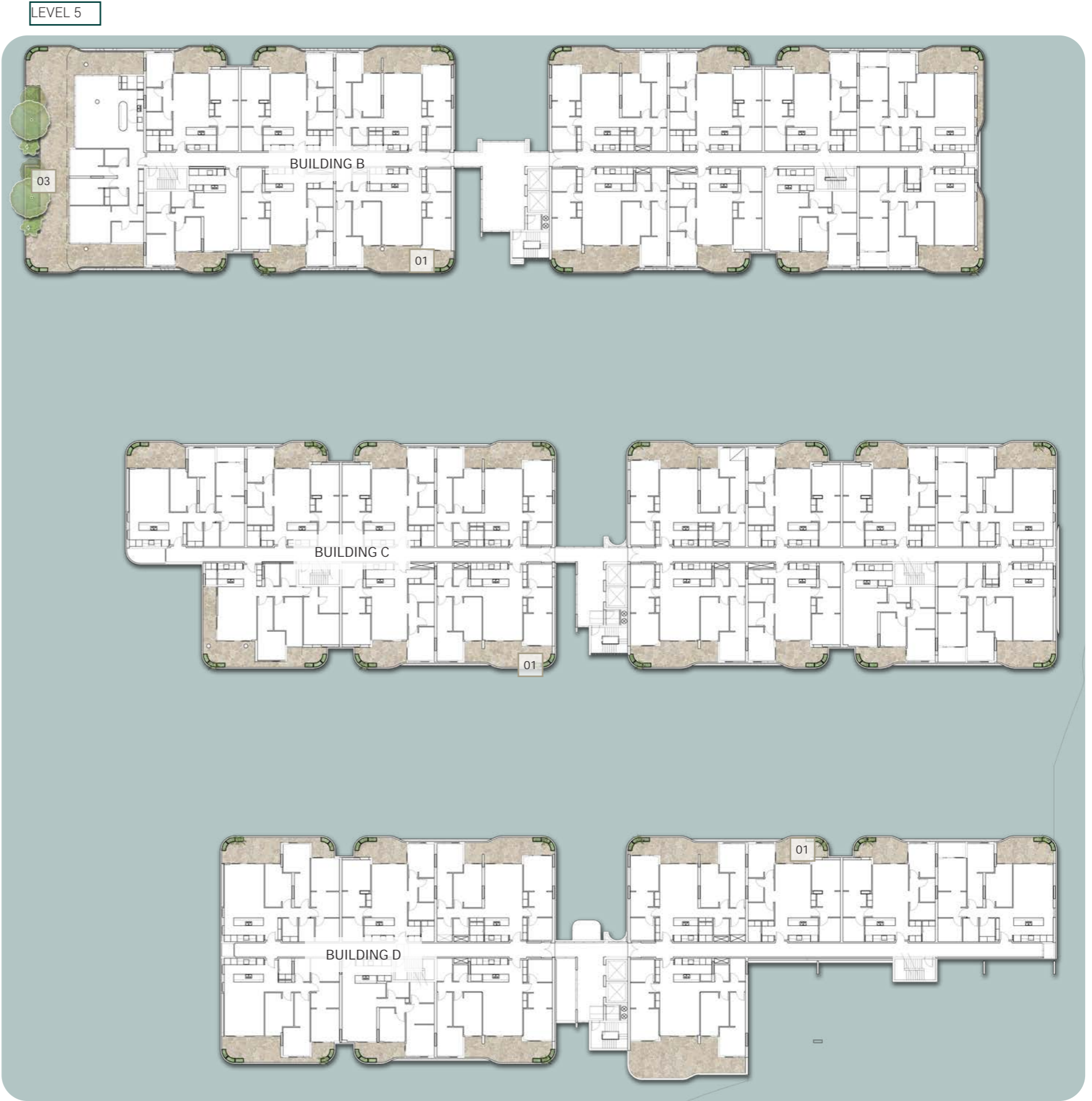


PRECEDENT IMAGERY



LEGEND

1. Private balcony planters with low-maintenance planting for tenants
2. Green roof with hardy, drought-tolerant planting which will cascade over the sides and create a feature upon entry at drop-off zone
3. Larger planters on private balconies, allowing for screening to western sun



SCALE
1:750@A3



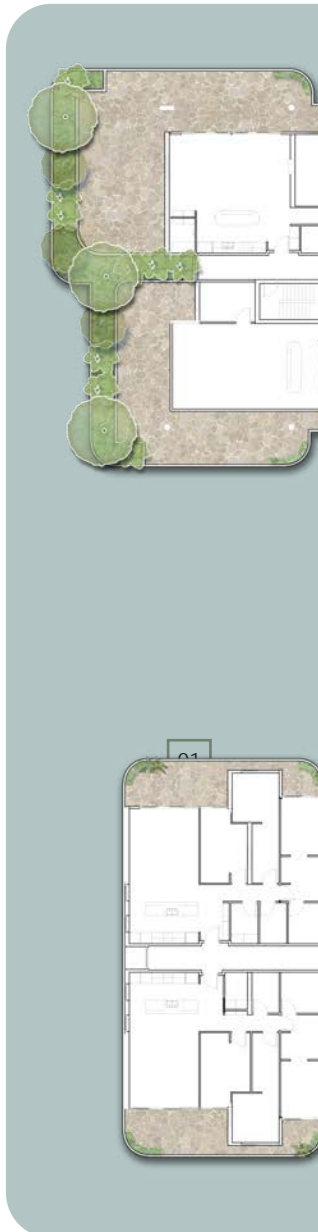
LEVEL 6

LEGEND

- 1. Private balcony planters with low-maintenance planting for tenants
- 2. Larger planters on private balconies, allowing for screening to western sun



LEVEL 7





LEVEL 8



LEVEL 9



SCALE
1:500@A3

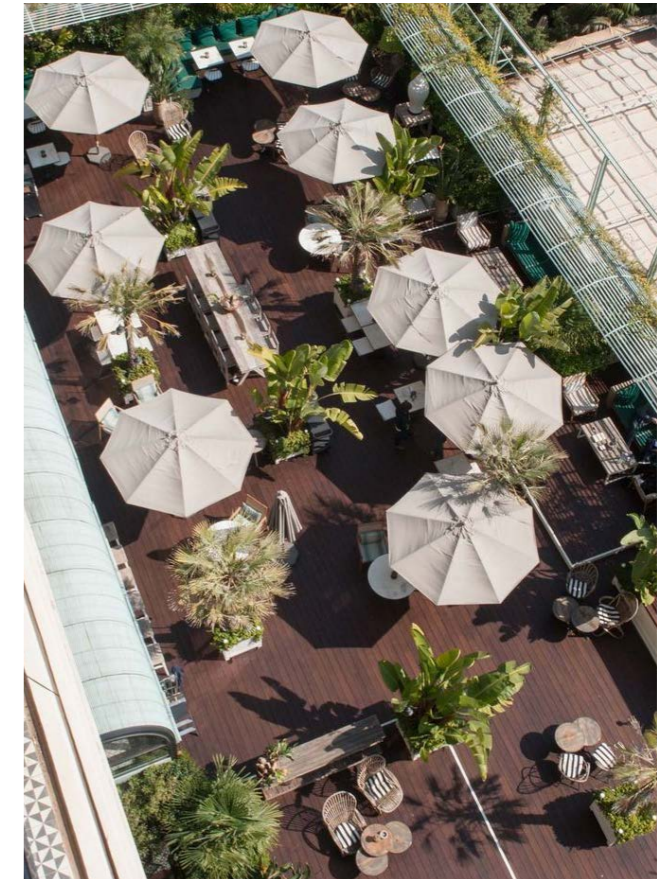


2.8 Roof Design

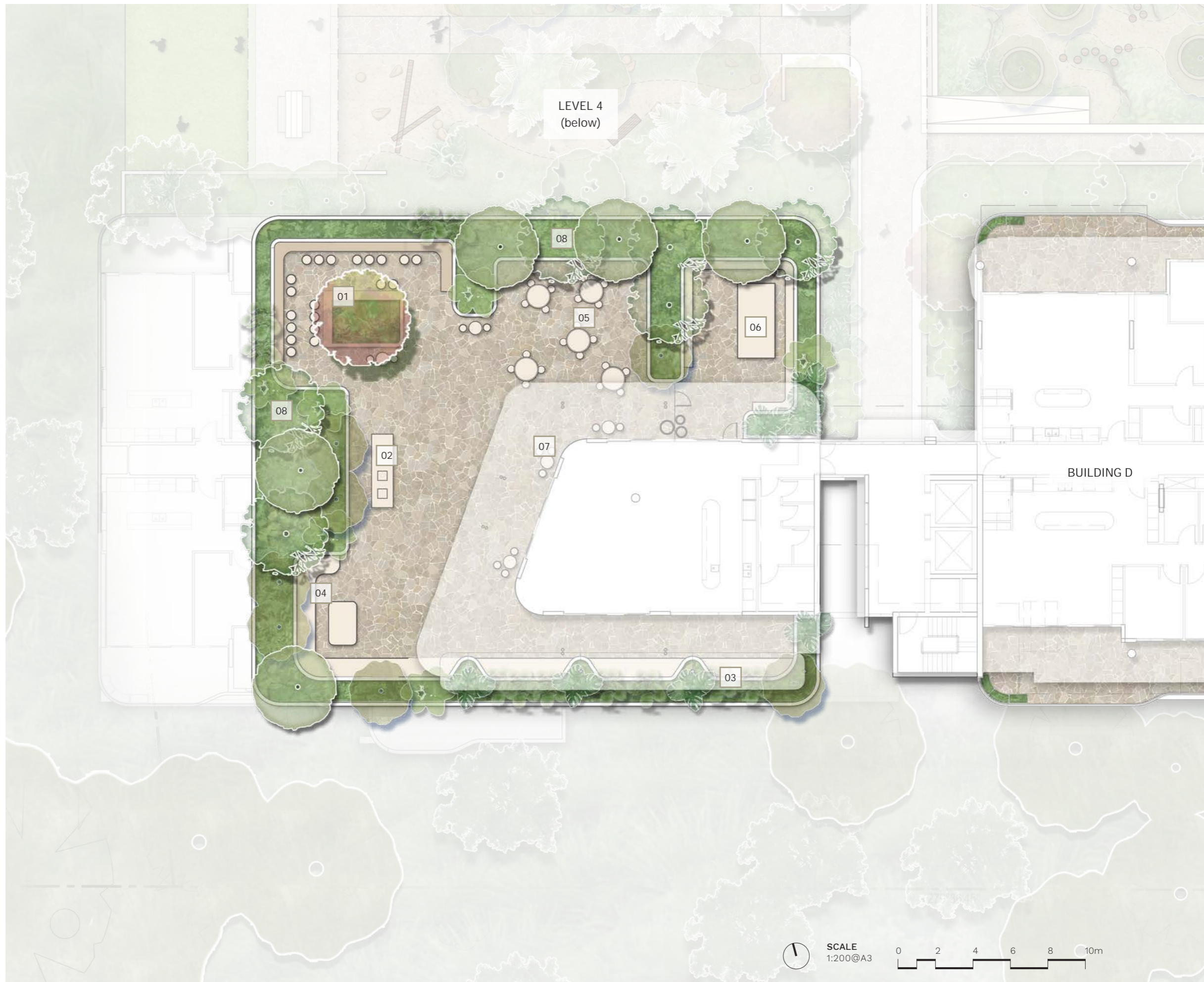
2.8.1 Building D

LEGEND

1. High bar stools and tables to views over North-West aspect of building for sunset use (potential hireable space)
2. Central BBQ fully accessible for wheelchair users
3. Lounge area along shaded Southern aspect of building with overhead trellis for vines
4. Open lounge area along west side, shaded by large trees
5. Dining area with flexible furniture and umbrellas
6. Dining table (formal - potential hireable space) with private gated entries
7. Smaller flexible tables along perimeter of building under canopy
8. 1000mm high perimeter planter, allowing for large tree planting and to act as a balustrade

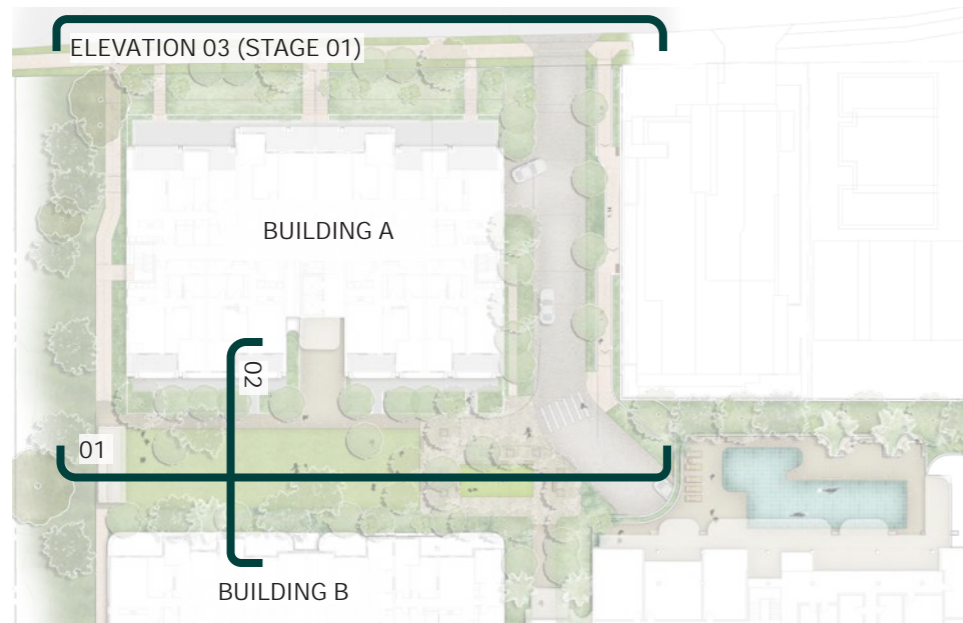


PRECEDENT IMAGERY



29 Landscape Sections and Elevations

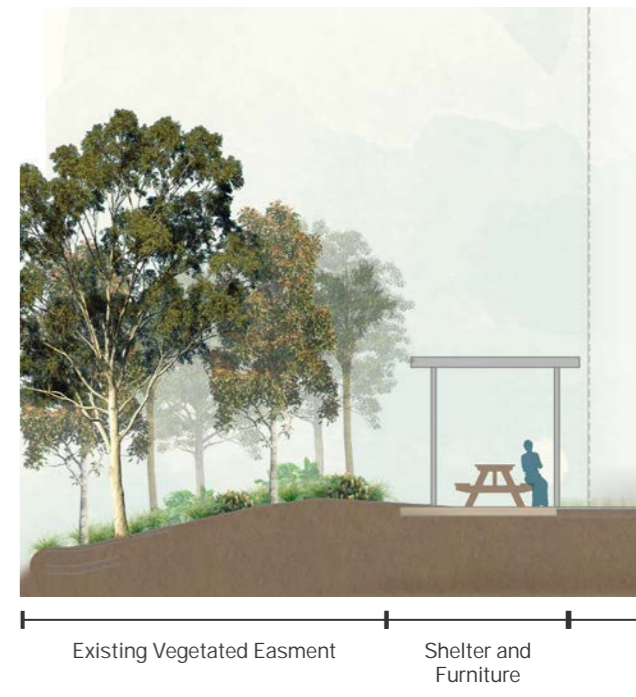
29.1 Courtyard 01 - (Level 1/2)



KEY PLAN - NTS

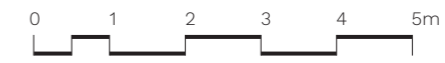
SECTION 01

SCALE
1:150@A3



SECTION 02

SCALE
1:100@A3



Private Courtyard with buffer planter to perimeter

Open Lawn area with intermittent shade trees

4 6 8 10m



Open Lawn area with intermittent shade trees

Formal Plaza with shade trees and benches

Artificial Lawn Bowling Green

Formal Plaza with shade trees and benches

Driveway to Parking under Building B

ELEVATION 03 (STAGE 01)

SCALE 1:300@A3

0 4 8 10m



Deep planting area with shade trees

Private Courtyard



Existing Neighbouring Buildings

Proposed Driveway and Pedestrian Ramp

Enhance existing understory vegetation beneath retained trees with supplementary planting and selective weed removal

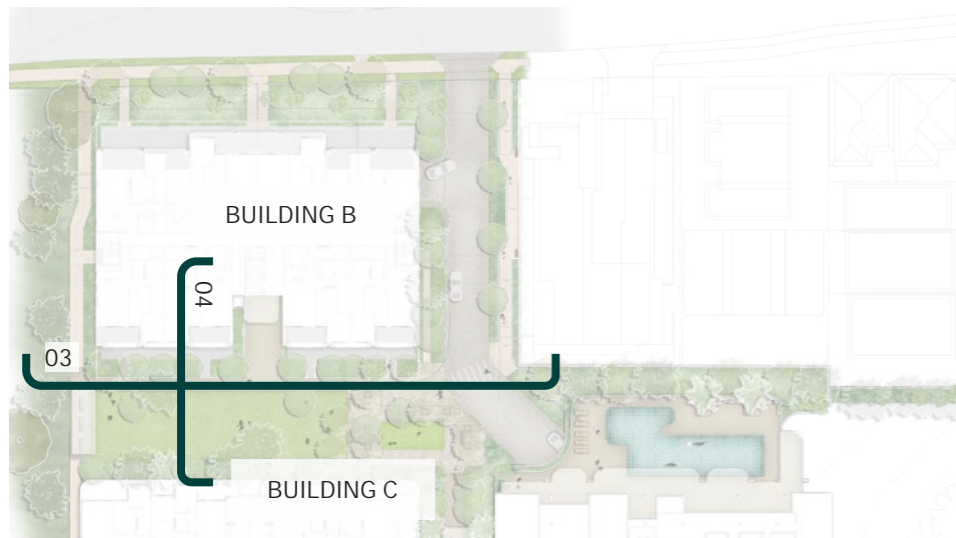
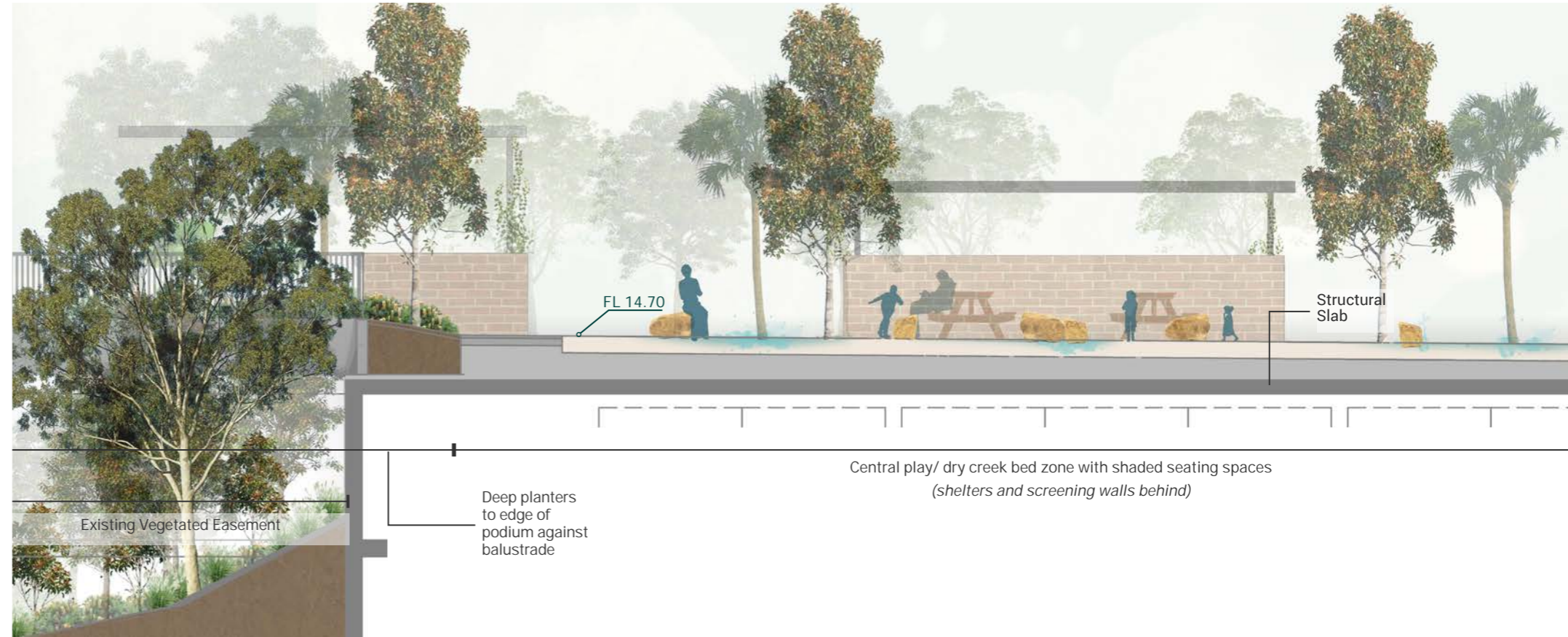
Retained Existing Driveway

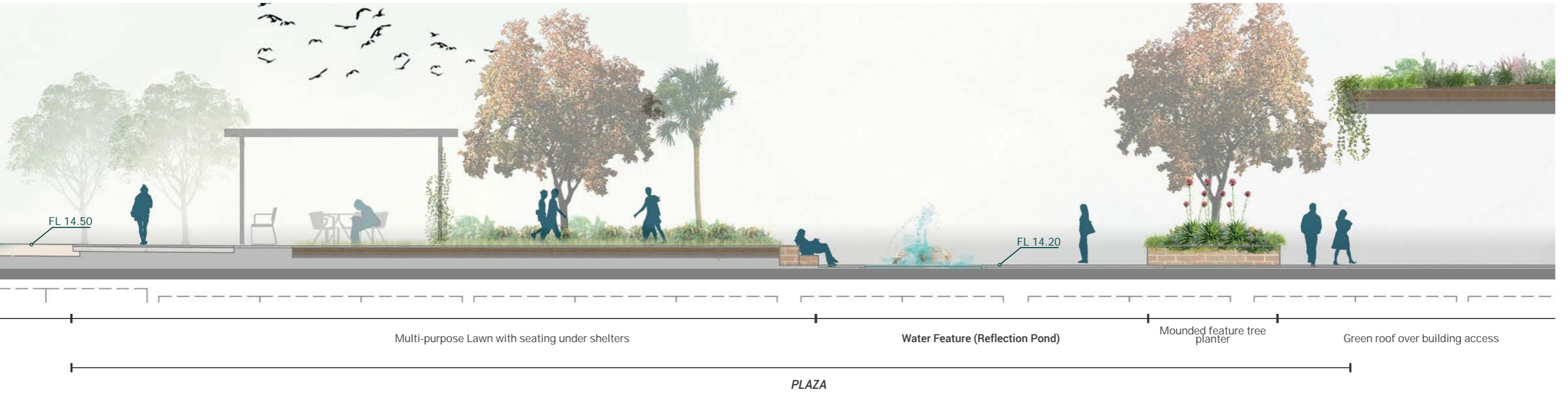
Existing Neighbouring Buildings

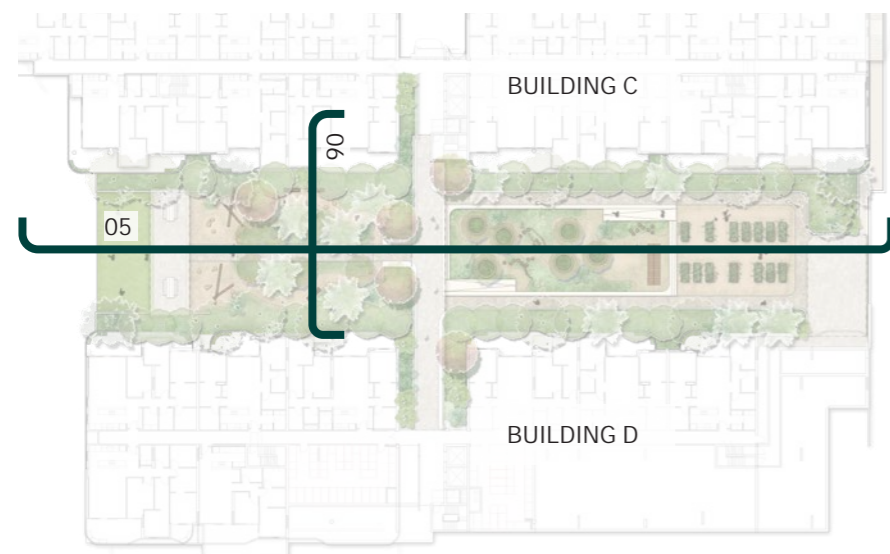
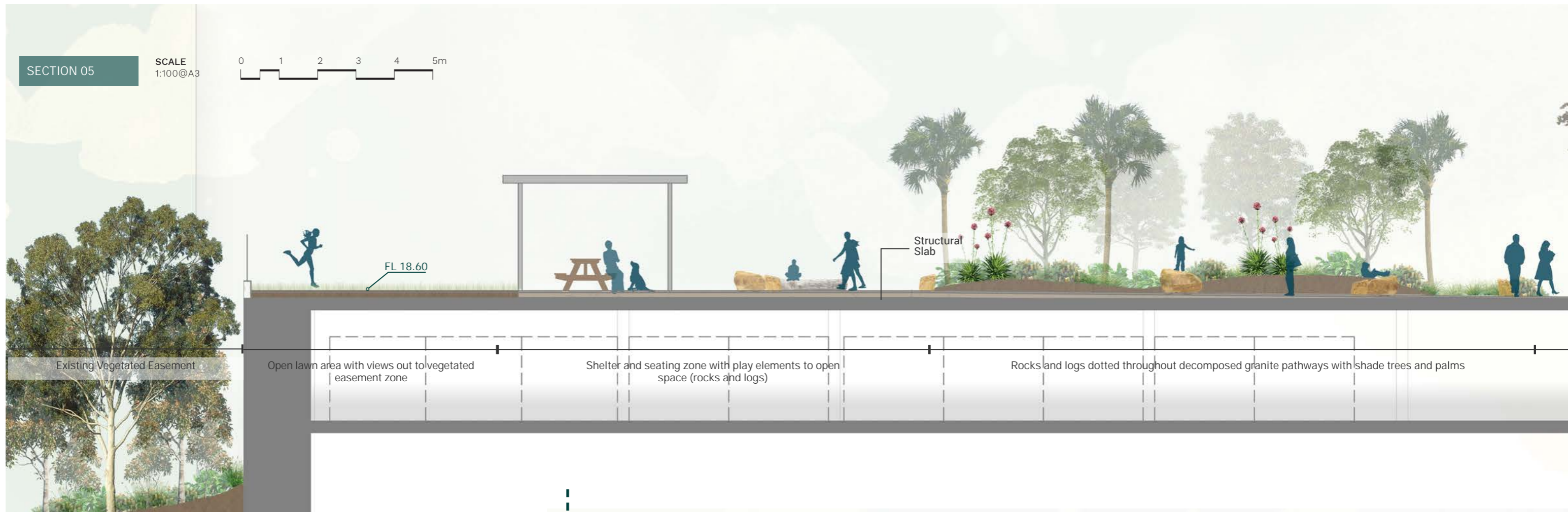
292 Courtyard 02 - (Level 3)

SECTION 03

SCALE
1:100@A3









Mounded feature tree planter

FL 18.40

Covered walkway

Raised sensory garden zone

JOIN SECTION BELOW

SECTION 06

SCALE 1:100@A3



Structural Slab

Large Shelter for garden shed and benches
(Planting bed behind)



BUILDING C

BUILDING D

FL 18.40

FL 18.60

Structural Slab

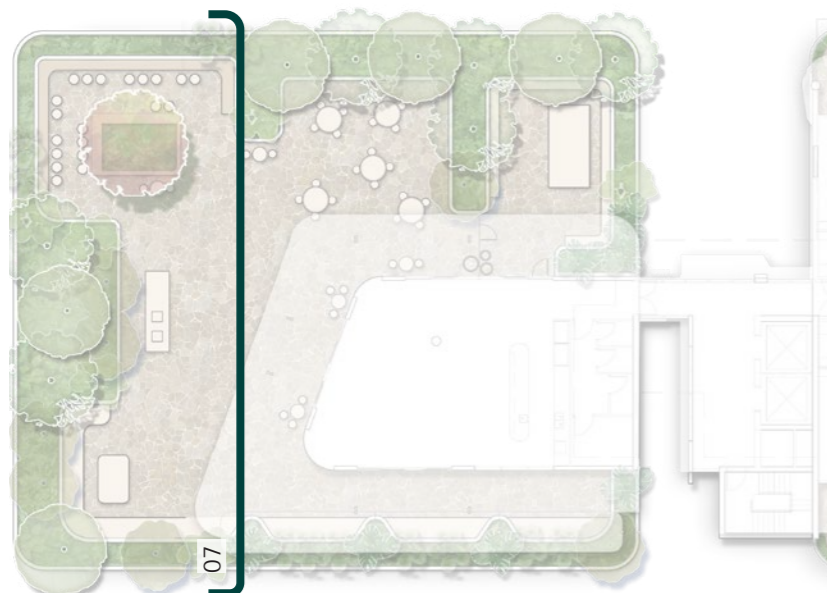
Mounded buffer planter to perimeter

Rocks and logs dotted throughout decomposed granite pathways with shade trees and palms

Mounded buffer planter to perimeter

SECTION 07

SCALE
1:50@A3



KEY PLAN - NTS



1000mm high
Perimeter planter

Large Lounge area with coffee table



Accessible BBQ and bench space
(Perimeter Planting bed behind)

Raised bar table and chairs sunset zone

2.10 Technical Design

2.10.1 Irrigation and Planter depths plan - BUILDING A

IRRIGATION REQUIREMENTS:

Total landscape area:

4,365.00m²




Irrigation requirement:

All landscape areas will be irrigated through a tanks stored within the development. The tank will be a suitable size to irrigate 4,365m² of the proposed planting. Suggested irrigation dosage at 25mm per m² per week or 25L per m².

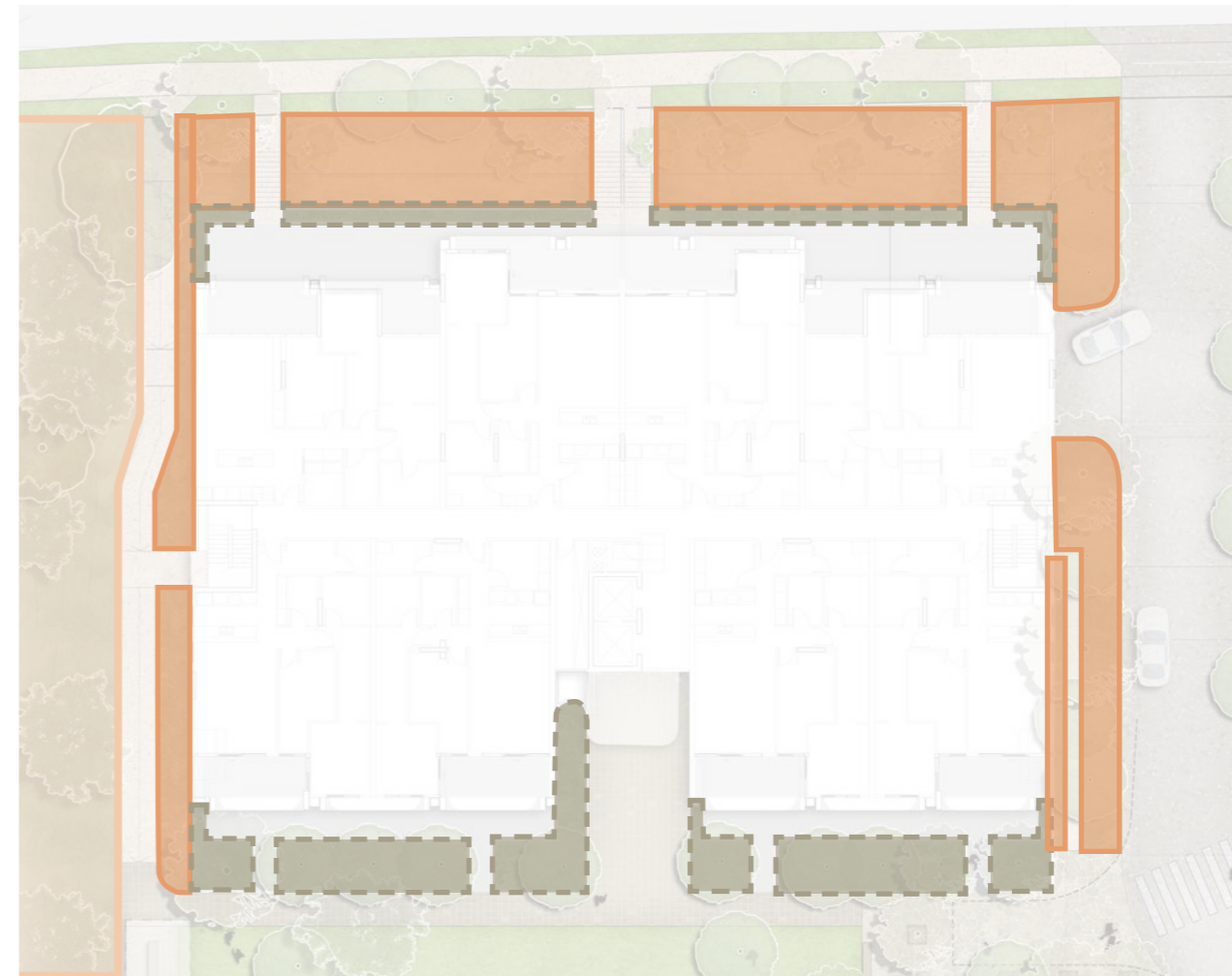
Irrigation requirement - approx. 109,000L per week

LEVEL	DESCRIPTION	TYPE OF VEGETATION	PLANTING AREA (M2)
Ground Level (Lytton Rd)	Deep Soil	50% Native 50% Exotics	442
Level 1	Deep Soil	Turf	405
	Deep Soil	50% Native 50% Exotics	420
Level 2	On Structure	50% Native 50% Exotics	214
Level 3	On Structure	50% Native 50% Exotics	825
		Turf	57
Level 4	On Structure	50% Native 50% Exotics	977
		Turf	102
Roof	Green Roof	50% Native 50% Exotics	423
Large balcony planters	Levels 5-9	50% Native 50% Exotics	295
Balcony Pots	Levels 4-9	50% Native 50% Exotics	Areas TBC
Roof Terrace	Communal area Level 11 (Building D)	50% Native 50% Exotics	205
		Sub totals:	4,365m ²

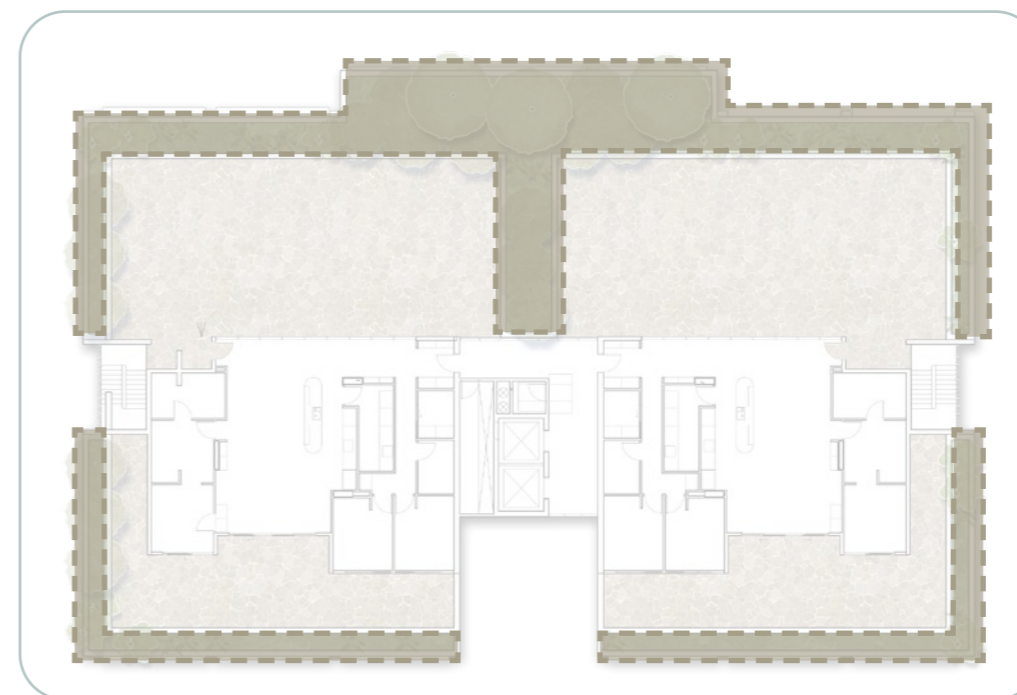
LEGEND

KEY	DESCRIPTION
	Deep Planting (in natural ground)
	Existing Vegetation Zone (left as is, with rehabilitation planting as required)
	900mm -1000mm depth podium planters

GROUND LEVEL






LEVEL 3



2.11 Technical Design

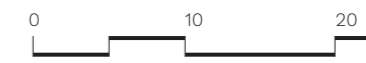
2.11.1 Planter depths plan - BUILDING B

LEGEND

KEY	DESCRIPTION
	300mm mounded to 500mm depth podium planters (Green Roof)
	800mm depth podium planters
	900mm -1000mm depth podium planters



SCALE
1:500@A3





Place Design Group
04 June 2026

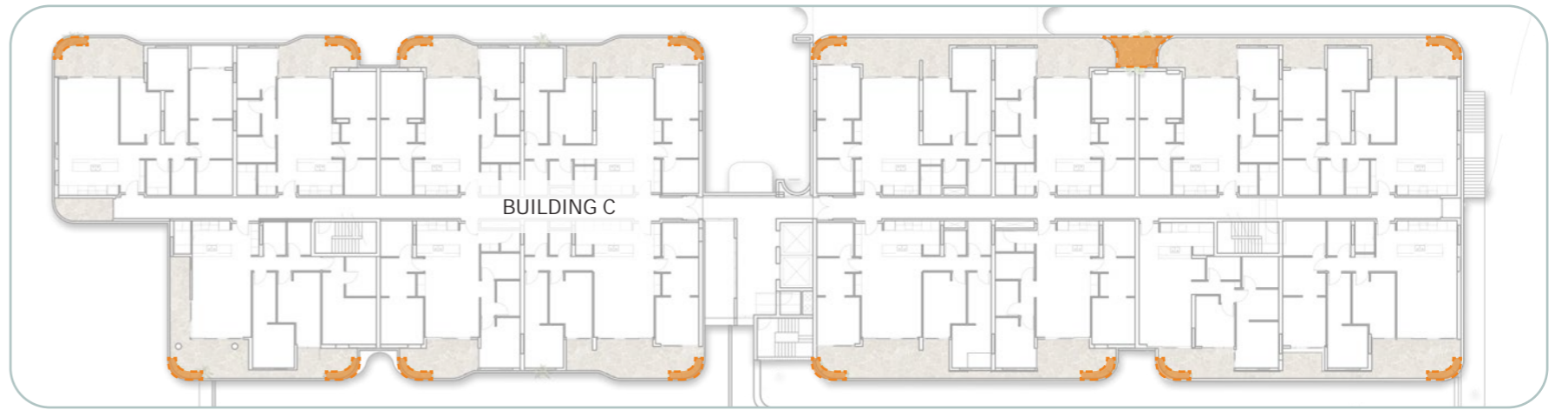
2.12 Technical Design

2.12.1 Planter depths plan - BUILDING C

LEGEND

KEY	DESCRIPTION
	800mm depth podium planters
	800mm, mounded to 1000mm depth podium planters

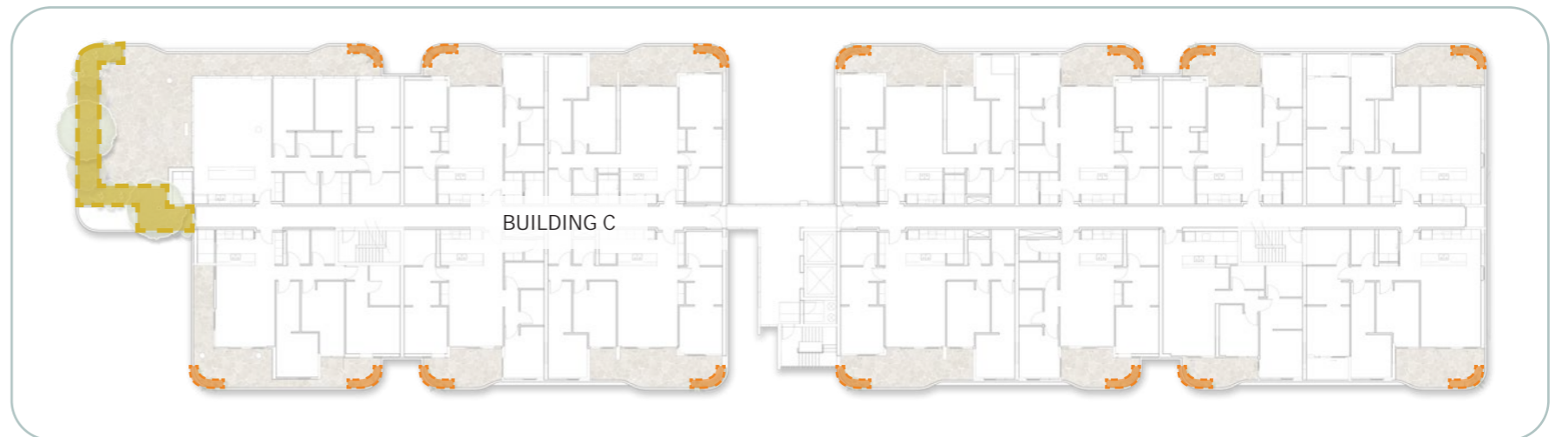
LEVEL 4



LEVEL 5



LEVEL 6





LEVEL 7



2.13 Technical Design

2.13.1 Planter depths plan - BUILDING D

LEGEND

KEY	DESCRIPTION
	800mm depth podium planters
	800mm, mounded to 1000mm depth podium planters






SCALE
1:500@A3



2.14 Technical Design

2.14.1 Planter depths plan - BUILDING D

LEGEND

KEY	DESCRIPTION
	800mm depth podium planters
	800mm, mounded to 1000mm depth podium planters
	1200mm Depth podium Planter

LEVEL 9



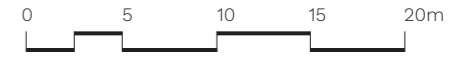
SCALE
1:500@A3



LEVEL 10







SCALE
1:400@A3

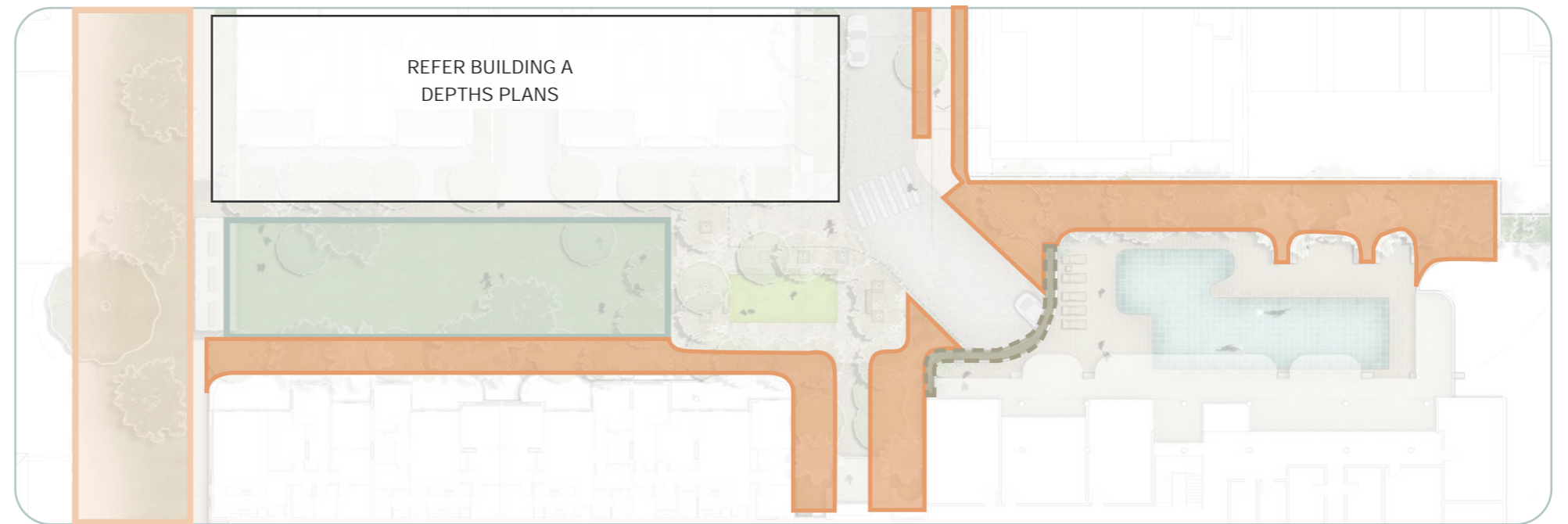


2.15 Technical Design

2.15.1 Planter depths plan - COURTYARD A

LEGEND







KEY	DESCRIPTION
	Deep Planting (in natural ground)
	Existing Vegetation Zone (left as is, with rehabilitation planting as required)
	Lawn (on natural ground)
	1200mm depth podium planters

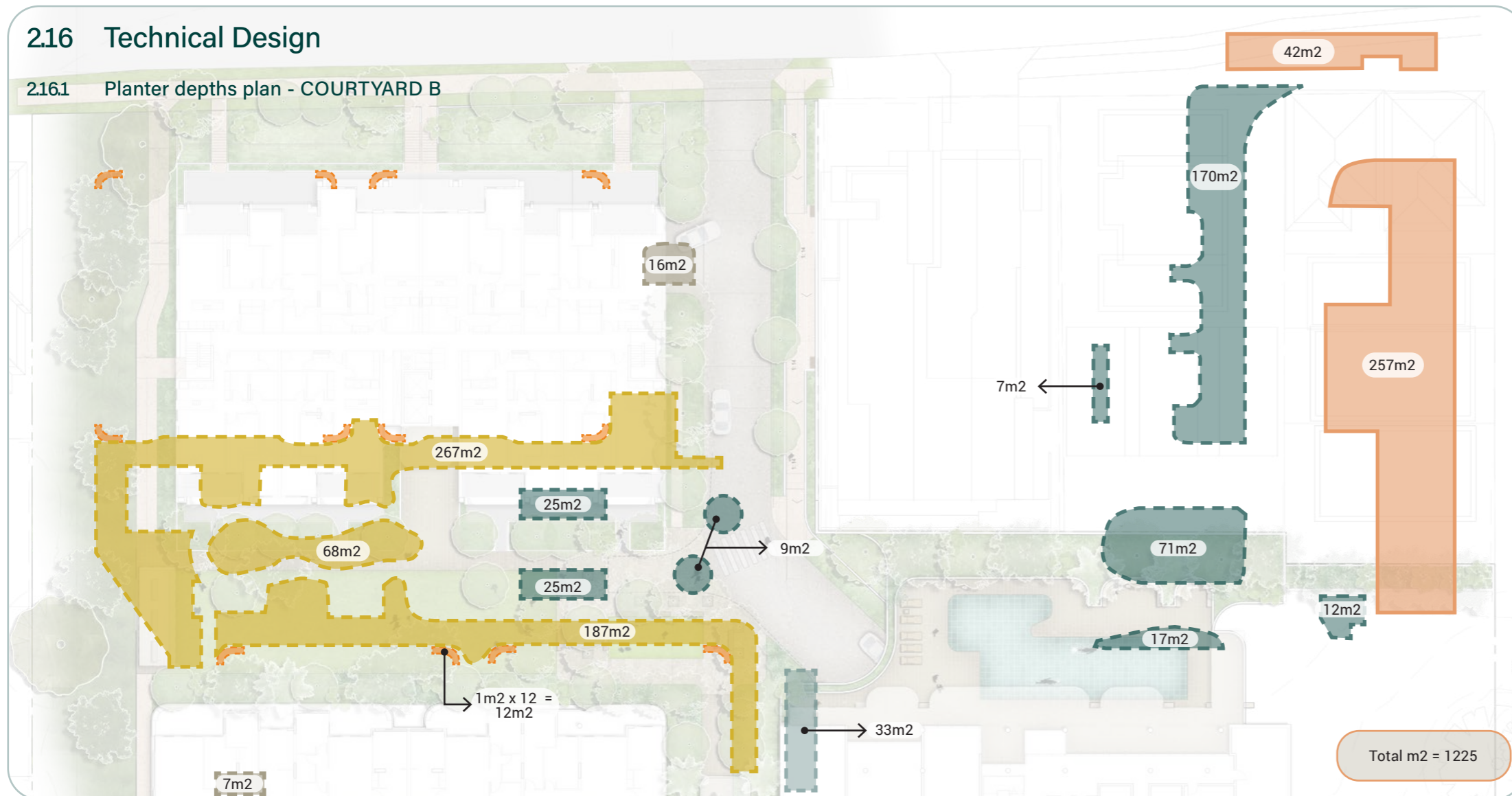


2.16 Technical Design

2.16.1 Planter depths plan - COURTYARD B

LEGEND

KEY	DESCRIPTION
	Deep Planting (in natural ground)
	500mm depth podium planter
	450-600mm, mounded to 800mm depth podium planters
	800mm depth podium planters
	500-1200mm varying depth podium planter
	1200mm depth podium planters

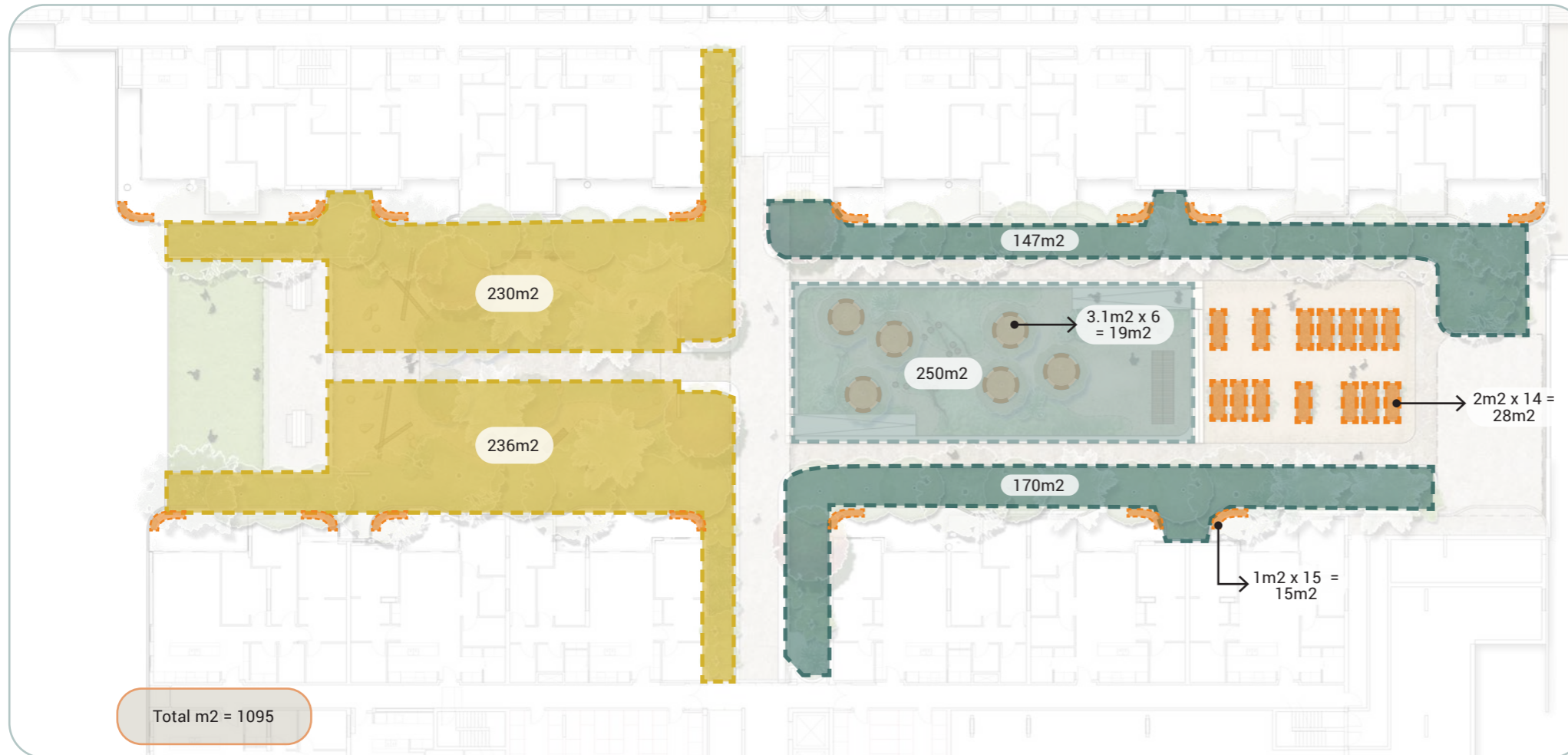


SCALE
1:500@A3



2.17 Technical Design

2.17.1 Planter depths plan - COURTYARD C



LEGEND

KEY	DESCRIPTION
	500mm depth podium planter
	450-600mm, mounded to 800mm depth podium planters
	800mm depth podium planters
	500-1200mm varying depth podium planter
	1200mm depth podium planters



SCALE
1:400@A3



3 DESIGN PALETTES

3.1 Materials Palette

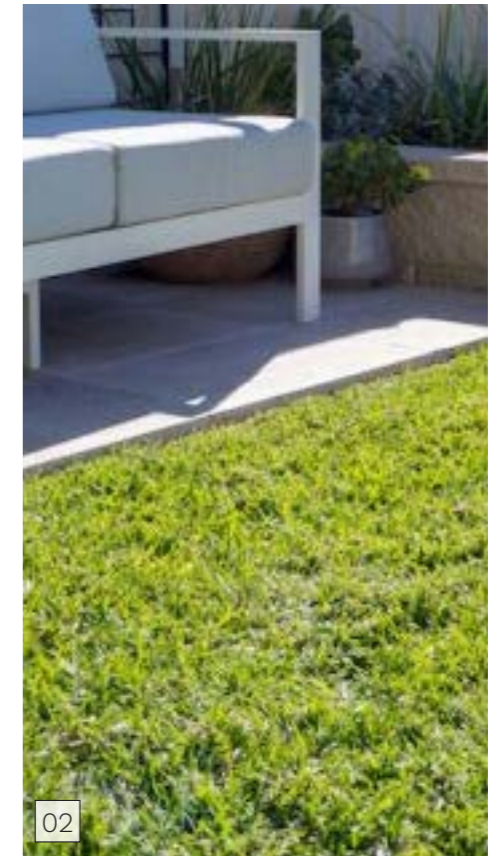
3.1.1 Schedule

LEGEND

KEY	MATERIAL	USE LOCATION
01	Insitu Broom Finish Concrete Pavement	Streetscape
02	Lawn (Natural)	Streetscape and courtyard spaces
03	Synthetic Lawn	Level 1 and 2
04	Feature Pavement 1 - Natural Stone Crazy Pavers	All levels
05	Feature Pavement 2 - Natural Stone Unit Pavers	All levels
06	Decomposed Granite (deco) Pavement	Level 3 and 4
07	Planter walls - insitu concrete	All levels
08	Planter walls - Brick	All levels
09	Planter walls - Coreten Steel	Level 4
10	Waterfeature mosaic tile	Level 3
11	Natural Boulders	Level 3 and 4
12	Natural Play Elements	Level 3 and 4
13	Raised community garden beds	Level 4
14	Sun lounges and pool furniture	Level 2



01

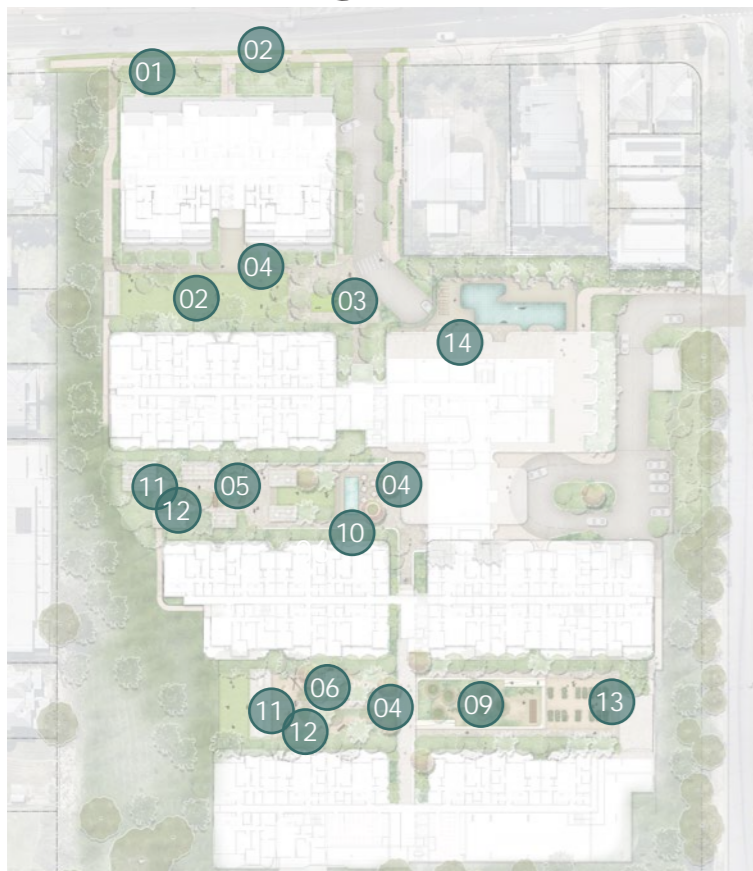


02



03

KEY PLAN - NOT TO SCALE



08



04



05



06



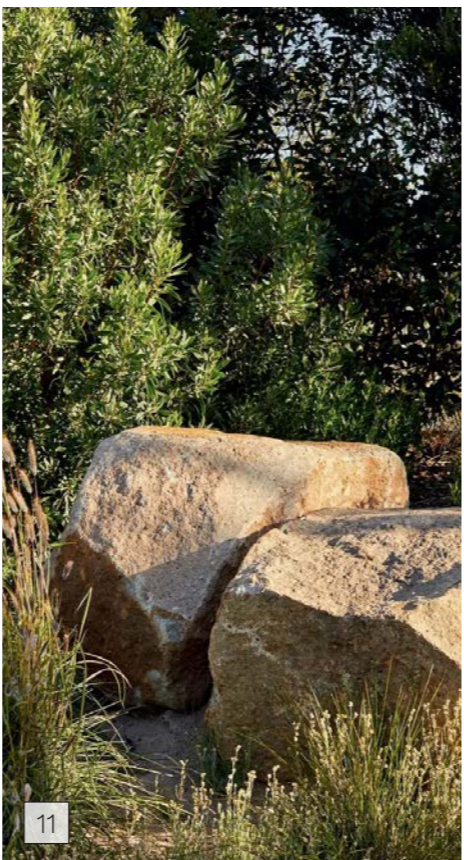
07



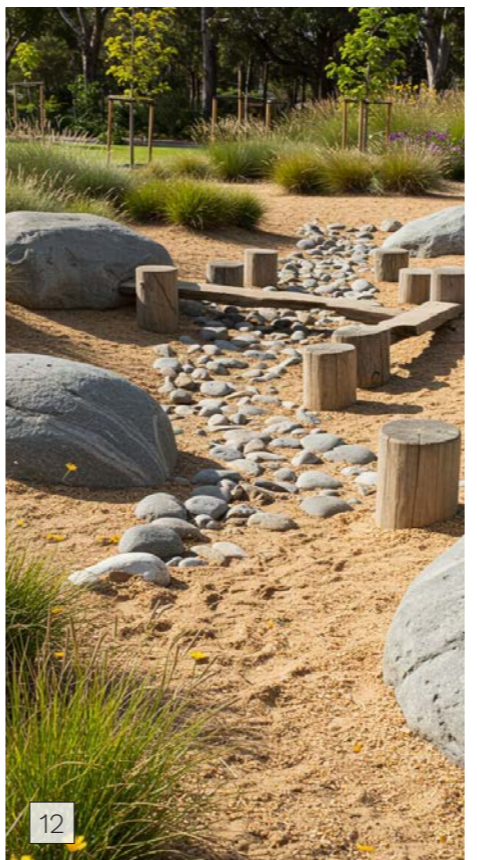
09



10



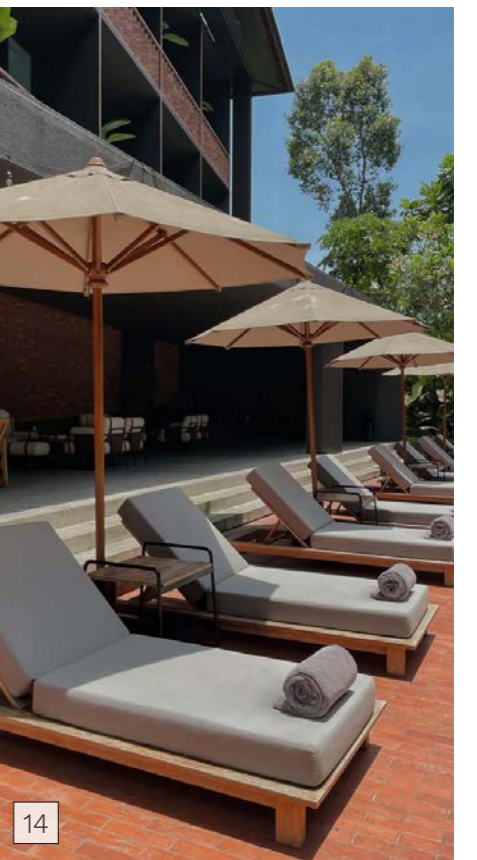
11



12



13



14

3.2 Plant Palette

3.2.1 Type A

(Internal shared spaces, podium planting, courtyard buffering)

	TREES & PALMS				LOCATION			
	CODE	BOTANICAL NAMES	COMMON NAMES	MATURE SIZE H x W (m)	USE NOTES	SCREENING	SUN	SHADE
1.	ARC cun	ARCHONTOPHOENIX <i>cunninghamiana</i>	Bangalow palm	15 x 5m	Feature Palm		●	
2.	BRA ace	BRACHYCHITON <i>aceifolious</i>	Flame Tree	30 x 10			●	
3.	CUP ana	CUPANIOPSIS <i>anacardioides</i>	Tuckeroo	10 x 3			●	
4.	CYA aus	CYATHEA <i>australis</i>	Tree Fern	6 x 4				●
5.	ELA eum	ELAEOCARPUS <i>eumundii</i>	Eumundii Quandong	7 x 3			●	
6.	LIV aus	LIVISTONA <i>australis</i>	Cabbage Tree Palm	15 x 5	Feature Palm		●	
7.	POL lon	POLYALTHIA <i>longifolia</i>	Indian Mast Tree	10 x 2			●	
8.	RAN fit	RANDIA <i>fitzalanii</i>	Native Gardenia	5 x 2			●	
9.	STR nic	STRELITZIA <i>nicolai</i>	Giant White Bird of Paradise	3 x 2		●	●	●
10.	WAT flo	WATERHOUSEA <i>floribunda</i>	Weeping Lilly Pilly	10 x 4			●	
11.	XAN gla	XANTHORRHOEA <i>glauca</i>	Grass Tree	4 x 2	Feature Tree/ Shrub			

Trees & Palms



1.



2.

	SHRUBS & ACCENTS				LOCATION			
	CODE	BOTANICAL NAMES	COMMON NAMES	MATURE SIZE H x W (m)	USE NOTES	SCREENING	SUN	SHADE
12.	ALC rub	ALCANTAREA <i>imperialis</i> 'Rubra'	Imperial Bromeliad	1.5 x 1			●	
13.	ALO bri	ALOCASIA <i>brisbanensis</i>	Cunjevoi	1.5 x 1.5		●	●	●
14.	ALP nut	ALPINIA <i>nutans</i>	Dwarf Cardamom	1 x 1	Buffer Planting	●	●	●
15.	BLE SL	BLECHNUM <i>gibbum</i> 'Silver Lady'	Dwarf Tree Fern	1 x 1				●
16.	CAL lut	CALATHEA <i>lutea</i>	Cuban Cigar	3 x 1.5		●		●
17.	CAR mac	CARISSA <i>macrocarpa</i>	Desert Star	1 x 1			●	
18.	CYC rev	CYCAS <i>revoluta</i>	Cycad	1.5 x 1.5			●	
19.	IXO OD	IXORA 'Orange Dwarf'	Orange Dwarf	1 x 1			●	
20.	MON del	MONSTERA <i>deliciosa</i>	Swiss Cheese Plant	1.5 x 1.5				●
21.	PHI IG	PHILODENDRON 'Imperial Green'	Imperial Green	1 x 1				●
22.	PHI xan	PHILODENDRON 'Xanadu'	Xanadu	1 x 1			●	●
23.	PIT MM	PITTIOSPORUM 'Miss Muffet'	Miss Muffet Pittosporum	1 x 1			●	
24.	SYZ res	SYZYGIUM 'Resilience'	Psyllid resistant Lilly Pilly	3 x 2	Buffer Planting	●	●	

Shrubs & Accents



12.

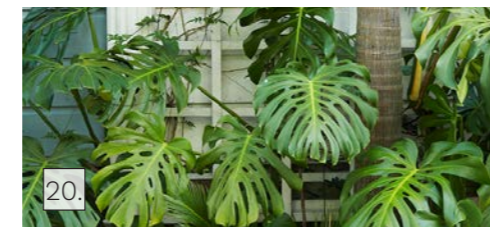


14.



13.

NOTE: Plant palette based from previous approval



KEY PLAN - NOT TO SCALE



Refer introduction for zone explanation

3.3 Plant Palette

3.3.1 Type A

(Internal shared spaces, podium planting, courtyard buffering)

GROUNDCOVERS & GRASSES					LOCATION		
CODE	BOTANICAL NAMES	COMMON NAMES	MATURE SIZE H x W (m)	USE NOTES	SCREENING	SUN	SHADE
1.	ASP ela	ASPIDISTRA <i>elatior</i>	Cast-Iron Plant	0.7 x 1	Buffer Planting		●
2.	CLI min	CLIVIA <i>miniata</i>	Clivia	0.5 x 0.5	Feature flowering plant		●
3.	HYM lit	HYMENOCALLIS <i>littoralis</i>	Spider Lily	0.7 x 0.7		●	●
4.	LIG ren	LIGULARIA <i>reniformis</i>	Tractor Seat Plant	1 x 1			●
5.	LIR mus	LIRIOPE <i>muscari</i>	lilyturf	0.5 x 0.5		●	●
6.	MOL cap	MOLINERIA <i>capitulata</i>	Palm Grass	1 x 1	Buffer Planting	●	●
7.	OPH jap	OPHIPOGON <i>japonicus</i>	Mondo Grass	0.25 x spreading			●
8.	PEP obt	PEPEROMIA <i>obtusifolia</i>	Green Peperomia	0.5 x 0.5			●
9.	VIO hed	VIOLA <i>hederacea</i>	Native Violet	0.2 x spreading		●	●
10.	ZEP can	ZEPHYRANTHES <i>candida</i>	White Rain Lily	0.4 x 0.4		●	●
11.	ZOY ten	ZOYSIA <i>tenuifolia</i>	No Mow Grass	0.25 x spreading		●	●

CLIMBING & CASCADING					LOCATION		
CODE	BOTANICAL NAMES	COMMON NAMES	MATURE SIZE H x W (m)	USE NOTES	SCREENING	SUN	SHADE
12.	CAS CI	CASUARINA ' <i>Cousin It</i> '	Cousin It	0.25 x spreading			●
13.	CIS ant	CISSUS <i>antarctica</i>	Kangaroo Vine	0.5 x spreading		●	
14.	DIC SF	DICHONDRA ' <i>Silver Falls</i> '	Silver Falls	0.25 x spreading		●	
15.	EPI aur	EPIPREMNUM <i>aureum</i>	Devils Ivy	0.5 x spreading	Climbing Vine	●	●
16.	FIC pum	FICUS <i>pumilla</i>	Creeping Fig	0.15 x 2	Climbing Vine		●
17.	PYR ven	PYROSTEGIA <i>venusta</i>	Orange Trumpet Creeper	0.5 x spreading	Climbing Vine		●
18.	TRA jas	TRACHELOSPERMUM <i>jasminoides</i>	Star Jasmine	0.5 x spreading	Climbing Vine	●	●

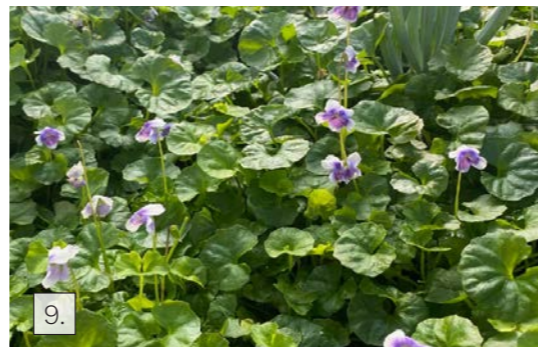
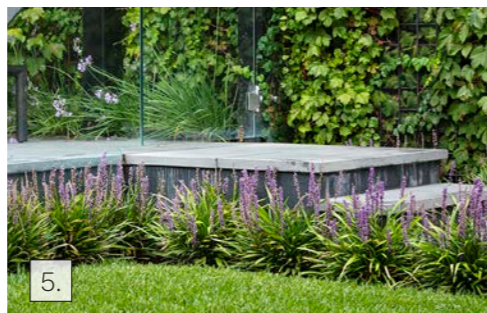


Groundcovers & Grasses



Climbing & Cascading

NOTE: Plant palette based from previous approval



KEY PLAN - NOT TO SCALE



Refer introduction for zone explanation

3.4 Plant Palette

3.4.1 Type B

(External buffer and streetscape planting)

	PALMS & TREES				LOCATION			
	CODE	BOTANICAL NAMES	COMMON NAMES	MATURE SIZE H x W (m)	USE NOTES	SCREENING	SUN	SHADE
1.	ACR imp	ACRONYCHIA <i>imperfurata</i>	Fraser Island Apple	5 x 3			●	
2.	BAC cit	BACKHOUSIA <i>citriodora</i>	Lemon Myrtle	15 x 4			●	
3.	ELA gra	ELAEOCARPUS <i>grandis</i>	Blue Quandong	25 x 7		●	●	●
4.	GRE bai	GREVILLEA <i>baileyana</i>	White Oak	8 x 4		●	●	
5.	LOP con	LOPHOSTEMON <i>confertus</i>	Box Brush	20 x 10	Feature Tree		●	
6.	MEL qui	MELALEUCA <i>quinquenervia</i>	Paperbark tea tree	15 x 7			●	
7.	SYZ tie	SYZYGIUM <i>tierneyanum</i>	River Cherry	6 x 3		●	●	●
8.	TRI lus	TRISTANIOPSIS ' <i>Luscious</i> '	Luscious	7 x 4	Street Tree		●	
9.	XAN chr	XANTHOSTEMON <i>chrysanthus</i>	Golden Penda	7 x 4	Street Tree		●	

	SHRUBS & ACCENTS				LOCATION			
	CODE	BOTANICAL NAMES	COMMON NAMES	MATURE SIZE H x W (m)	USE NOTES	SCREENING	SUN	SHADE
10.	BAN rob	BANKSIA <i>robur</i>	Swamp Banksia	2 x 1.5		●	●	
11.	BAN spi	BANKSIA <i>spinulosa</i>	Hairpin Banksia	2 x 2			●	
12.	CAL CC	CALLISTEMON ' <i>Captain Cook</i> '	Weeping Bottlebrush	1.5 x 1.5		●	●	
13.	DOR exc	DORYANTHES <i>excelsa</i>	Gynea Lily	1 x 1			●	
14.	GRE HG	GREVILLEA ' <i>Honey Gem</i> '	Grevillea	3 x 2		●	●	
15.	GRE RG	GREVILLEA ' <i>Robyn Gordon</i> '	Grevillea	1 x 1			●	
16.	LEP car	LEPTOSPERMUM <i>polygalifolium</i> ' <i>Cardwell</i> '	Tea Tree	1.5 x 1.5		●	●	
17.	WES zen	WESTRINGIA <i>fruticosa</i> ' <i>Zena</i> '	Dwarf Westringia	0.8 x 0.8			●	

	GROUNDCOVERS & GRASSES				LOCATION			
	CODE	BOTANICAL NAMES	COMMON NAMES	MATURE SIZE H x W (m)	USE NOTES	SCREENING	SUN	SHADE
18.	CAR gla	CARPOBROTUS <i>glaucescens</i>	Pigface	0.25 x spreading			●	
19.	DIA cae	DIANELLA <i>caerulea</i>	Blue Flax Lily	0.7 x 0.7			●	●
20.	DIE bic	DIETES <i>bicolor</i>	Yellow Wild Iris	0.5 x 0.5			●	●
21.	DIE gra	DIETES <i>grandiflora</i>	Large Wild Iris	0.5 x 0.5			●	●
22.	GRE PRM	GREVILLEA ' <i>Poorinda Royal Mantle</i> '	Royal Mantle	0.4 x 2	Feature Groundcover		●	
23.	HAR vio	HARDENBERGIA <i>violacea</i>	Native Sarsaparilla Vine	0.25 x spreading			●	●
24.	LOM hys	LOMANDRA <i>hystrix</i>	Mat Rush	1.5 x 1.5			●	
25.	LOM sha	LOMANDRA ' <i>Shara</i> '	Mat Rush	1 x 1			●	
26.	MYO par	MYOPORUM <i>parvifolium</i>	Creeping Boobialla	0.2 x spreading		●	●	●

Trees & Palms



1.



2.

Shrubs & Accents



10.

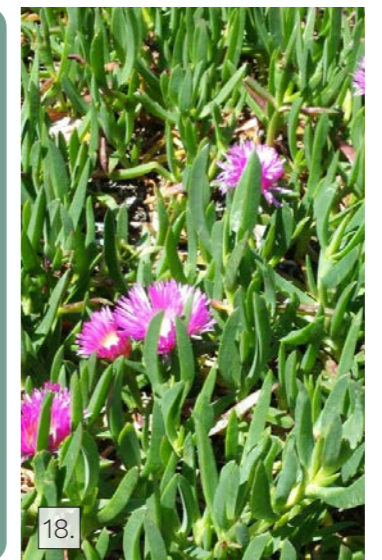


11.



12.

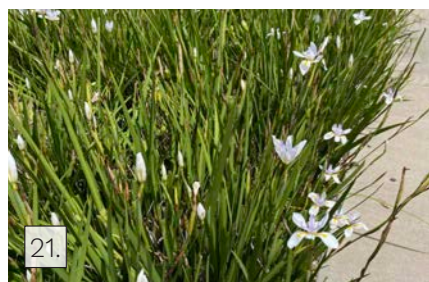
Groundcovers & Grasses



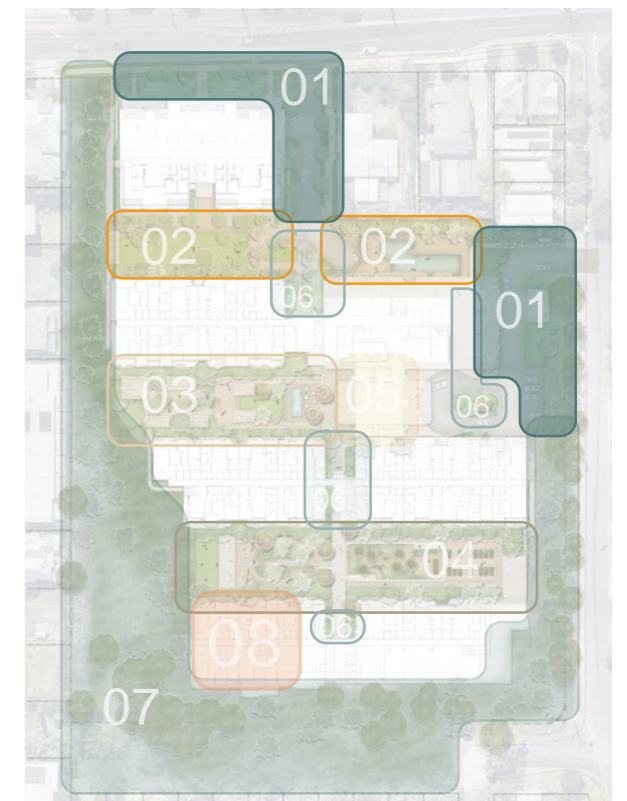
18.



19.



KEY PLAN - NOT TO SCALE



Refer introduction for zone explanation

3.5 Plant Palette

3.5.1 Type C

(Productive Planting)

SENSORY GARDENS

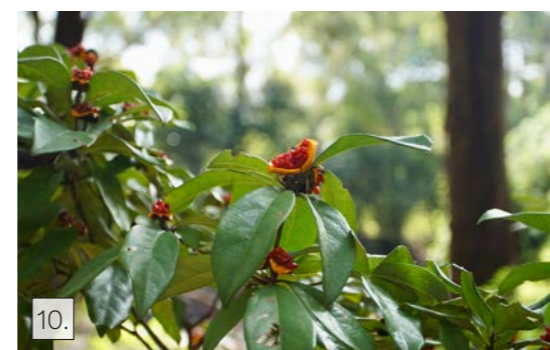
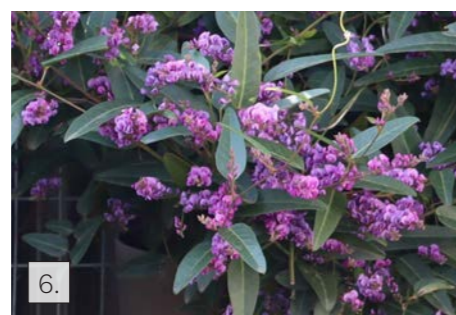
	CODE	BOTANICAL NAMES	COMMON NAMES	MATURE SIZE H x W (m)
1.	ACR aci	ACRONYCHIA <i>acidula</i>	Leomon Aspen	10 x 6
2.	BAC cit	BACKHOUSIA <i>citriodora</i>	Lemon Myrtle	15 x 4
3.	BAN spi	BANKSIA <i>spinulosa</i>	Hairpin Banksia	2 x 2
4.	GRE ban	GREVILLEA <i>banksii</i>	Banks' grevillea	1.5 x 1.5
5.	GRE moo	GREVILLEA ' <i>moonlight</i> '	Grevillea	4 x 3
6.	HAR vio	HARDENBERGIA <i>violacea</i>	Native Sarsaparilla Vine	0.25 x spreading Vine
7.	LAV sto	LAVANDULA <i>stoechas</i>	French Lavender	1 x 1
8.	LOM hys	LOMANDRA <i>hystrix</i>	Mat Rush	1.5 x 1.5
9.	LOM lon	LOMANDRA <i>longifolia</i>	Mat rush	1 x 1
10.	PIT rev	PITTOSPORUM <i>revolutum</i>	Yellow pittosporum	9 x 3
11.	STA byz	STACHYS <i>byzantina</i>	Lambs Ear	0.5 x 0.5
12.	TET tet	TETRAGONIA <i>tetragonioides</i>	Warrigal Greens	0.2 x 2

FRUIT & VEGETABLE BEDS

	CODE	BOTANICAL NAMES	COMMON NAMES	MATURE SIZE H x W (m)
13.	ALL sch	ALLIUM <i>schoenoprasum</i>	Chives Common	0.5 x 0.5
14.	CIT lim	CITRUS <i>limon</i> ' <i>Lots A Lemons</i> '	Dwarf Lemon	1 x 2
15.	CIT ret	CITRUS <i>reticulata</i> ' <i>Imperial</i> '	Mandarin	2 x 1
16.	COR sat	CORIANDRUM <i>sativum</i>	Coriander	0.5 x 0.5
17.	MEN spi	MENTHA <i>spicata</i>	Spearmint	1 x 1
18.	OCI bas	OCIMUM <i>basilicum</i>	Basil Sweet	1 x 1
19.	ORI vul	ORIGANUM <i>vulgare</i> ' <i>Hirtum</i> '	Greek Oregano	0.5 x 0.5
20.	PET cri	PETROSELINUM <i>crispum</i> ' <i>neapolitanum</i> '	Parsley Continental	0.5 x 0.5
21.	ROS off	ROSMARINUS <i>officinalis</i>	Rosemary	2 x 2
22.	SAL off	SALVIA <i>officinalis</i>	Common Sage	0.5 x 1



NOTE: Plant palette based from previous approval



KEY PLAN - NOT TO SCALE



Refer introduction for zone explanation

3.6 Plant Palette

3.6.1 Type D

(Green Roofs and Balcony Planting)

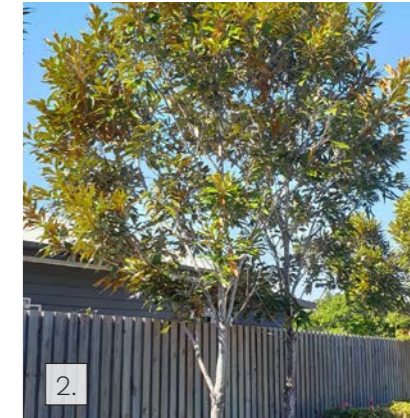
PALMS & TREES				LOCATION		
CODE	BOTANICAL NAMES	COMMON NAMES	MATURE SIZE H x W (m)	BALCONY SUN	BALCONY SHADE	GREEN ROOF
1.	ATR fit	ATRACTOCARPUS <i>fitzalanii</i>	Native Gardenia	5 x 3		
2.	GRE bai	GREVILLEA <i>baileyana</i>	White Oak	8 x 4	●	
3.	HAR pen	HARPULLIA <i>pendula</i>	Tulipwood	5 x 3	●	●
4.	SYZ tie	SYZYGIIUM <i>tierneyanum</i>	River Cherry	6 x 3	●	
5.	TRI lus	TRISTANIOPSIS ' <i>Luscious</i> '	Luscious	7 x 4	●	

SHRUBS & ACCENTS				LOCATION		
CODE	BOTANICAL NAMES	COMMON NAMES	MATURE SIZE H x W (m)	BALCONY SUN	BALCONY SHADE	GREEN ROOF
6.	BAN rob	BANKSIA <i>robur</i>	Swamp Banksia	2 x 1.5	●	●
7.	DOR exc	DORYANTHES <i>excelsa</i>	Gynea Lily	1 x 1	●	●
8.	GRE RG	GREVILLEA ' <i>Robyn Gordon</i> '	Grevillea	1 x 1	●	●
9.	LEP car	LEPTOSPERMUM <i>polygalifolium</i> ' <i>Cardwell</i> '	Tea Tree	1.5 x 1.5	●	
10.	MON del	MONSTERA <i>deliciosa</i>	Swiss Cheese Plan	1 x 1		●
11.	WES zen	WESTRINGIA <i>fruticosa</i> ' <i>Zena</i> '	Dwarf Westringia	0.8 x 0.8		●

GROUNDCOVERS & GRASSES				LOCATION		
CODE	BOTANICAL NAMES	COMMON NAMES	MATURE SIZE H x W (m)	BALCONY SUN	BALCONY SHADE	GREEN ROOF
12.	CAR gla	CARPOBROTUS <i>glaucescens</i>	Pigface	0.25 x spreading	●	●
13.	DIA cae	DIANELLA <i>caerulea</i>	Blue Flax Lily	0.7 x 0.7		●
14.	DIE bic	DIETES <i>bicolor</i>	Yellow Wild Iris	0.5 x 0.5	●	
15.	GRE PRM	GREVILLEA ' <i>Poorinda Royal Mantle</i> '	Royal Mantle	0.4 x 2	●	
16.	LOM hys	LOMANDRA <i>hystrix</i>	Mat Rush	1.5 x 1.5		●
17.	LOM sha	LOMANDRA ' <i>Shara</i> '	Mat Rush	1 x 1	●	●
18.	MYO par	MYOPORUM <i>parvifolium</i>	Creeping Boobialla	0.2 x spreading		●
19.	ZOY ten	ZOYSIA <i>tenuifolia</i>	No Mow Grass	0.25 x spreading	●	●

CLIMBING & CASCADING				LOCATION		
CODE	BOTANICAL NAMES	COMMON NAMES	MATURE SIZE H x W (m)	BALCONY SUN	BALCONY SHADE	GREEN ROOF
20.	CAS CI	CASUARINA ' <i>Cousin It</i> '	Cousin It	0.25 x spreading	●	
21.	CIS ant	CISSUS <i>antarctica</i>	Kangaroo Vine	0.5 x spreading		●
22.	DIC SF	DICHONDRA ' <i>Silver Falls</i> '	Silver Falls	0.25 x spreading		●
23.	EPI aur	EPIPREMNUM <i>aureum</i>	Devils Ivy	0.5 x spreading	●	
24.	FIC pum	FICUS <i>pumilla</i>	Creeping Fig	0.15 x 2		●

Trees & Palms

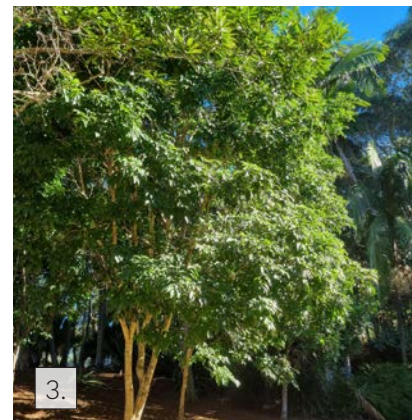


Trees & Palms

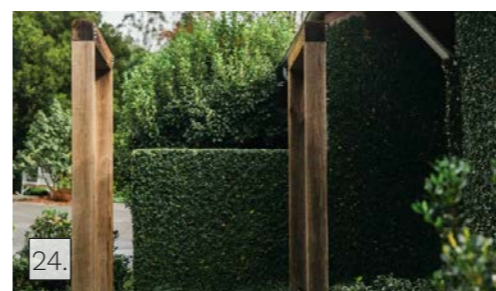
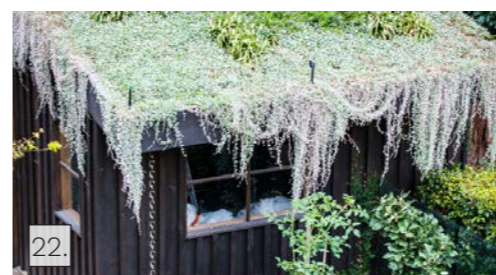


Trees & Palms





Climbing and Cascading



KEY PLAN - NOT TO SCALE



Refer introduction for zone explanation



place
design
group.

Australia
South East Asia
Middle East
China
Pacific Islands

Follow us on
   

placedesigngroup.com

