

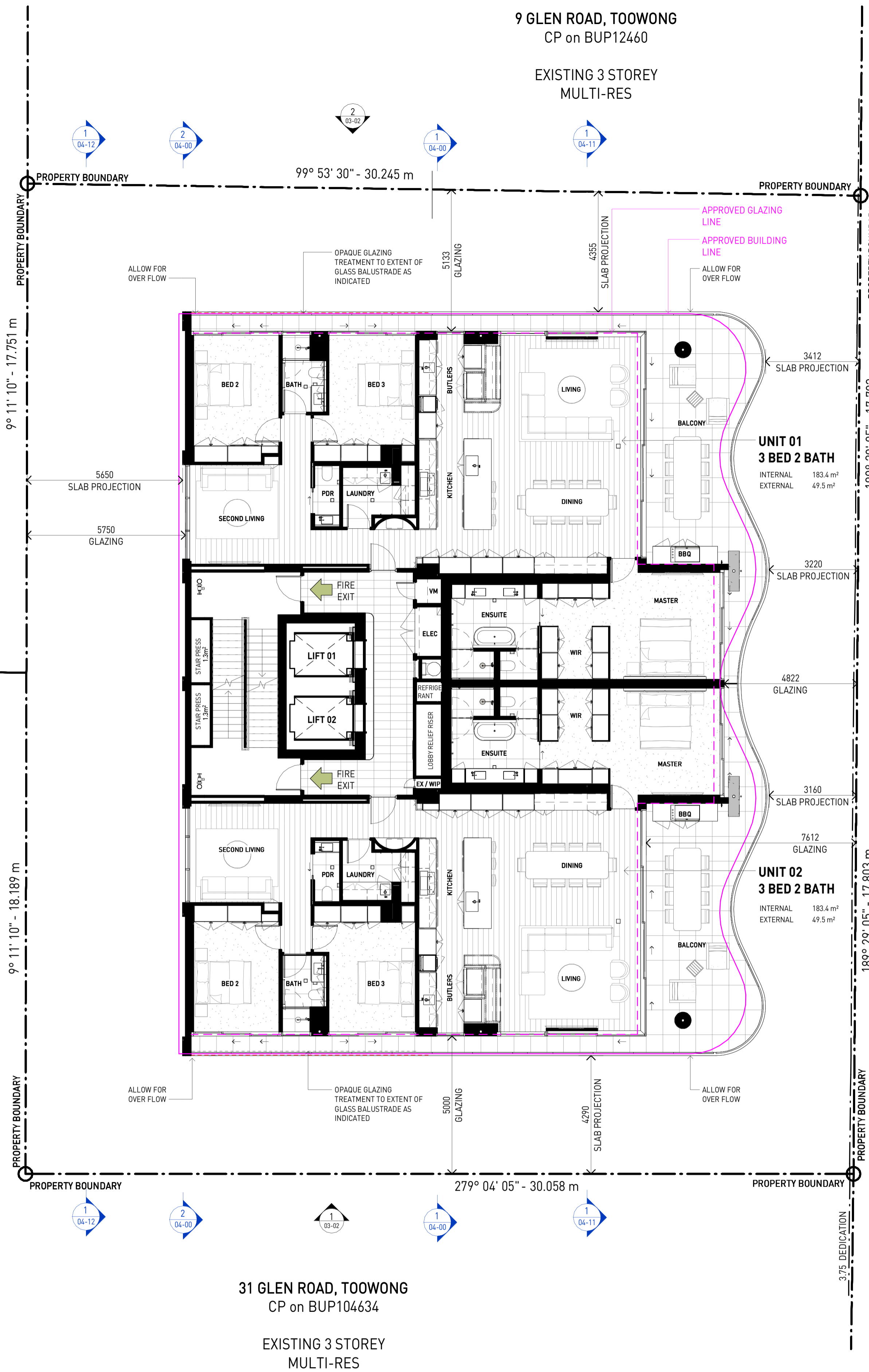
**BCC DS**  
**RECEIVED**  
 20/04/2026  
**APPLICATION REF**  
 A006978543

SITE COVER - LEVEL 02	
AREA	SITE COVER
558.1 m <sup>2</sup>	51.8%

NOTE: SITE COVER APPLIES TO LEVELS 02 TO ROOF TERRACE

38 BENSON STREET, TOOWONG  
 CP on BUP3357  
 EXISTING 8 STOREY  
 MIXED USE

48 BENSON STREET, TOOWONG  
 CP on BUP104634  
 EXISTING 2 STOREY  
 MULTI-RES



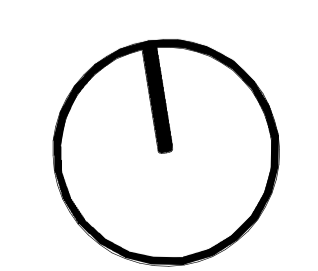
31 GLEN ROAD, TOOWONG  
 CP on BUP104634  
 EXISTING 3 STOREY  
 MULTI-RES

**NOT FOR CONSTRUCTION**



JOE ADSETT ARCHITECTS PTY LTD  
 38 Warry Street, Fortitude Valley  
 QLD, Australia 4006  
 ABN: 98 144 820 020  
 NOMINATED ARCHITECT: Joseph  
 Adsett (4365 BOAQ, 8535 NSW)  
 WWW.JOEADSETT.COM.AU

REV.	DESCRIPTION	ISSUED	DATE
C	CONSULTANT ISSUE	JMB	15.11.24
D	DA SUBMISSION	JMB	27.11.24
E	INFORMATION REQUEST SUBMISSION	JMB	13.02.25
F	UPDATED DA DRAWINGS	JMB	25.06.25
G	DA MINOR CHANGE	JMB	19.02.26
H	DA MINOR CHANGE UPDATE	AJ	05.03.26
I	DA MINOR CHANGE UPDATE	JMB	20.04.26



PROJECT  
**AMARI**  
 21 - 25 GLEN ROAD, TOOWONG

CLIENT  
 PRIVATE

SHEET NAME  
**FLOOR PLAN - LEVEL 02-15 (TYPICAL)**

PROJECT NO. 20231001  
 DISC. A  
 SHEET NO. 02-06  
 REV. I

COPYRIGHT: Concepts and information contained in this drawing are copyright and may not be reproduced in whole or part by any medium, without the written permission of Joe Adsett Architects Pty Ltd. Joe Adsett Architects Pty Ltd accept no responsibility for the usability, completeness or accuracy of data transferred electronically. Recipients should when necessary request a hard copy version for verification. Do not scale this drawing, use figured dimensions only. Verify all project dimensions before commencing on-site work or off-site fabrication. Notify Joe Adsett Architects of any discrepancies and seek instructions. This drawing has been produced in colour and is intended to be printed in colour. Failure to do so may result in partial information.

STATUS Design Development  
 DRW MI  
 SCALE @ A1 1 : 100