



CONTENTS

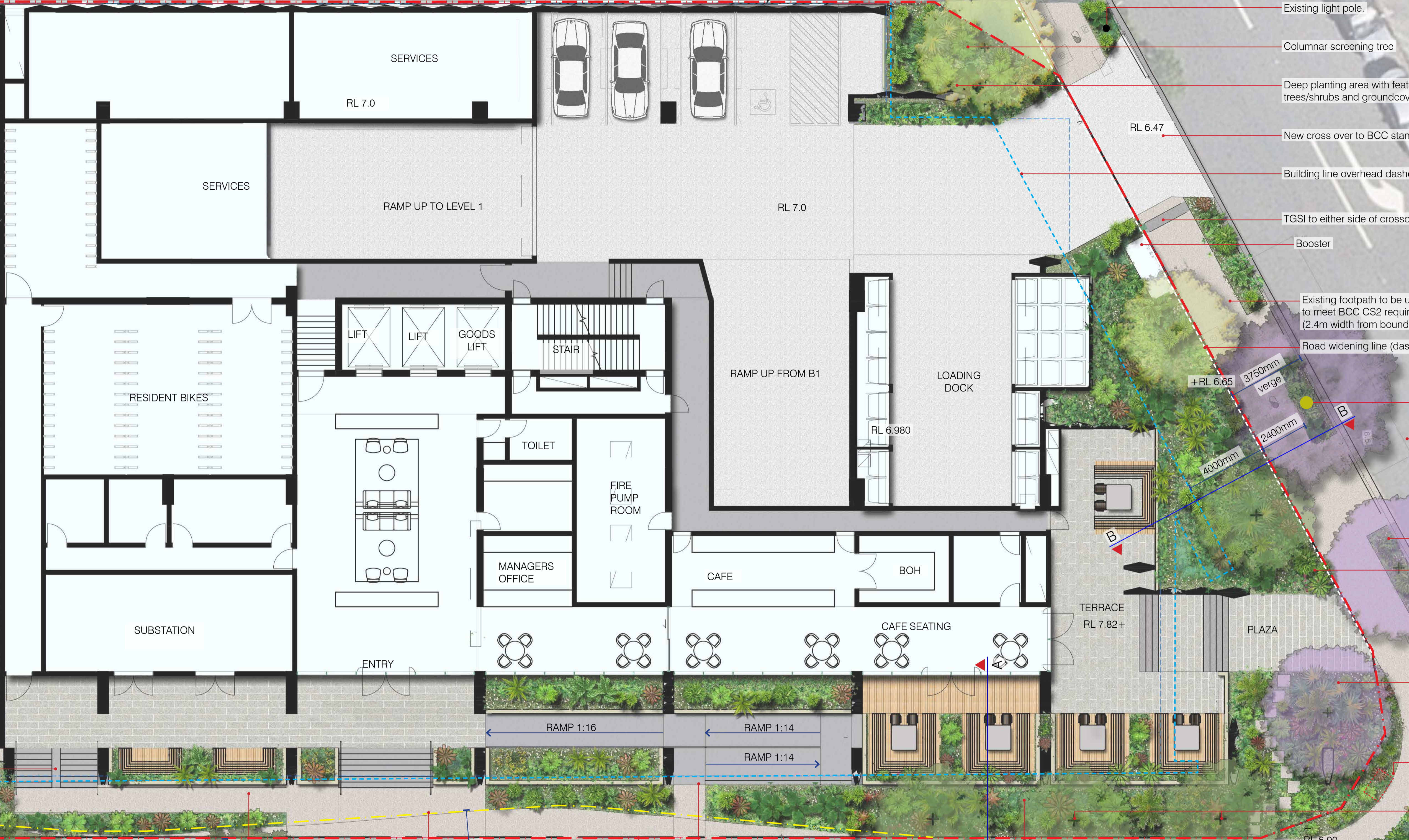
SITE PLAN - GROUND LEVEL	SD-02
LEVEL 01	SD-03
LEVEL 02	SD-04
LEVEL 03	SD-05
LEVEL 04	SD-06
LEVEL 28 HOME OFFICE	SD-07
LEVEL 29 POOL	SD-08
LANDSCAPE SECTIONS	SD-09
PLANTER DETAILS	SD-10
INDICATIVE PLANTING PALETTE	SD-11

BCC DS
LODGED
 24-FEB-2025
APPLICATION REF
 A006721031

NEIGHBOURING BUILDING

GRAHAM STREET

CORONATION DRIVE



- Existing light pole.
- Columnar screening tree
- Deep planting area with feature trees/shrubs and groundcovers.
- RL 6.47
- New cross over to BCC standards
- Building line overhead dashed blue.
- TGSI to either side of crossover
- Booster
- Existing footpath to be upgraded to meet BCC CS2 requirements (2.4m width from boundary).
- Road widening line (dashed white).
- +RL 6.65
- 3750mm verge
- 2400mm
- 4000mm
- Existing Jacaranda to be retained.
- Existing street car parks.
- New Jacaranda tree installation
- Deep planting area with feature shrubs & groundcovers.
- Deep planting area with Proposed large feature tree (Jacaranda).
- Existing service pits.
- Columnar screening trees
- RL 6.90
- Existing light pole.
- New kerb ramp and TGS.
- Existing service pits.

- Bicycle Push Ramp
- Existing street trees to be retained (AGATHIS robusta)
- New path to join with existing to be flush & level
- 2300mm
- 5000mm
- Low planting in front of service doors
- Verge dedication line
- Existing footpath to be upgraded to a 2.3m wide, exposed aggregate path. Street edge of path to align with existing path edge to minimise impact on existing street trees
- DDA Ramp to entrance.
- Existing light pole.
- Property boundary (red dash)
- Existing bus stop shelter.
- Existing street trees to be retained. (AGATHIS robusta)

SITE PLAN - GROUND LEVEL

299 CORONATION DRIVE - MILTON

NEIGHBOURING BUILDING

GRAHAM STREET

LEVEL 1 UPPER
+ RL 13.650

Small
Small

Property boundary dashed red.

STAIR

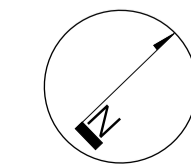
LEVEL 1 LOWER
+ RL 12.000

Podium planter with cascading plants and groundcovers. - depth minimum 400mm

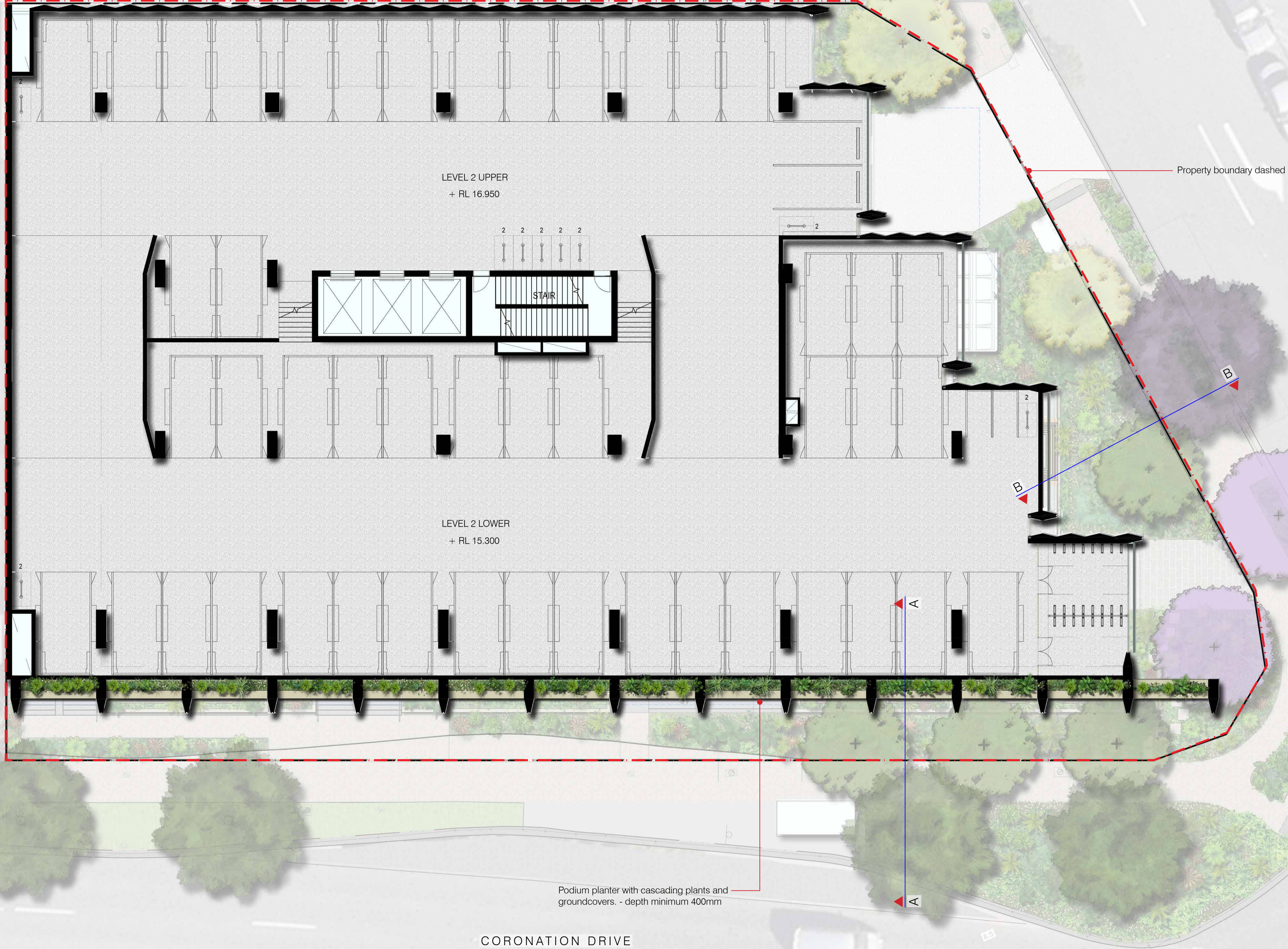
CORONATION DRIVE

LEVEL 01

299 CORONATION DRIVE - MILTON



BCC DS
LODGED
24-FEB-2025
APPLICATION REF
A006721031



Property boundary dashed red.

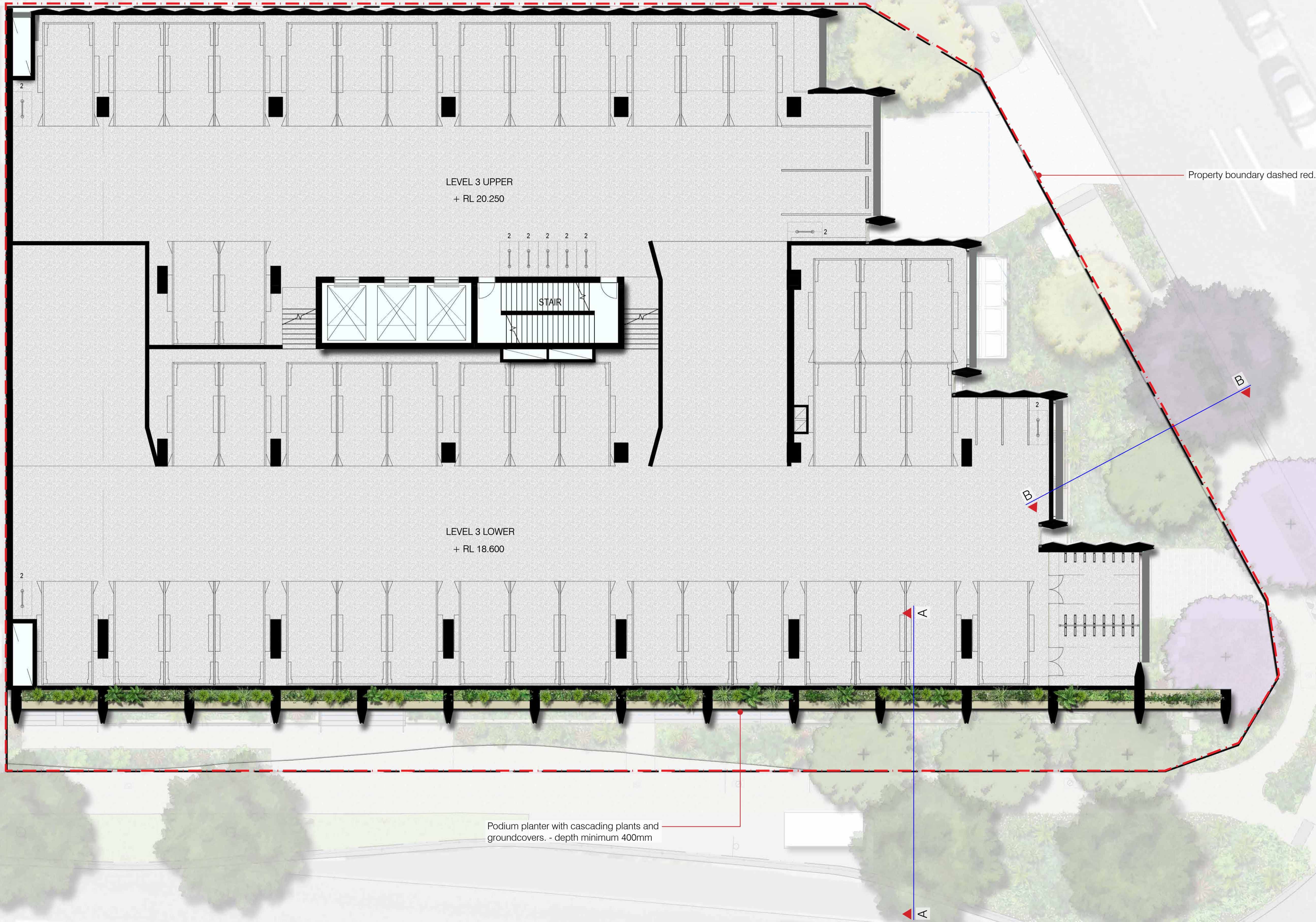
Podium planter with cascading plants and groundcovers. - depth minimum 400mm

CORONATION DRIVE

GRAHAM STREET

LEVEL 02

299 CORONATION DRIVE - MILTON



LEVEL 3 UPPER
+ RL 20.250

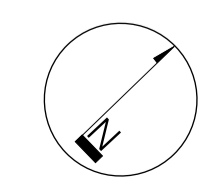
LEVEL 3 LOWER
+ RL 18.600

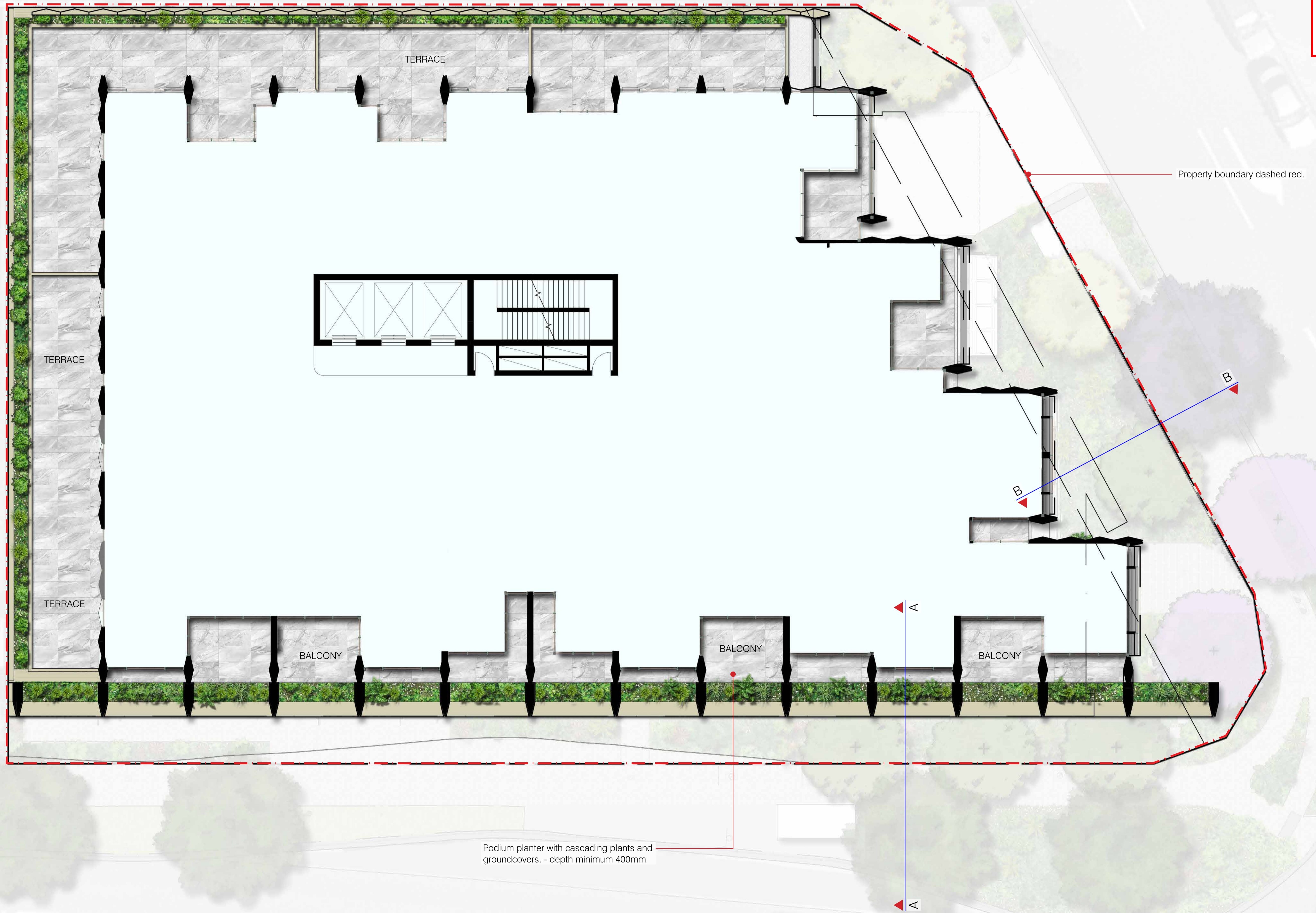
Property boundary dashed red.

Podium planter with cascading plants and groundcovers. - depth minimum 400mm

LEVEL 03

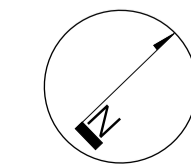
299 CORONATION DRIVE - MILTON

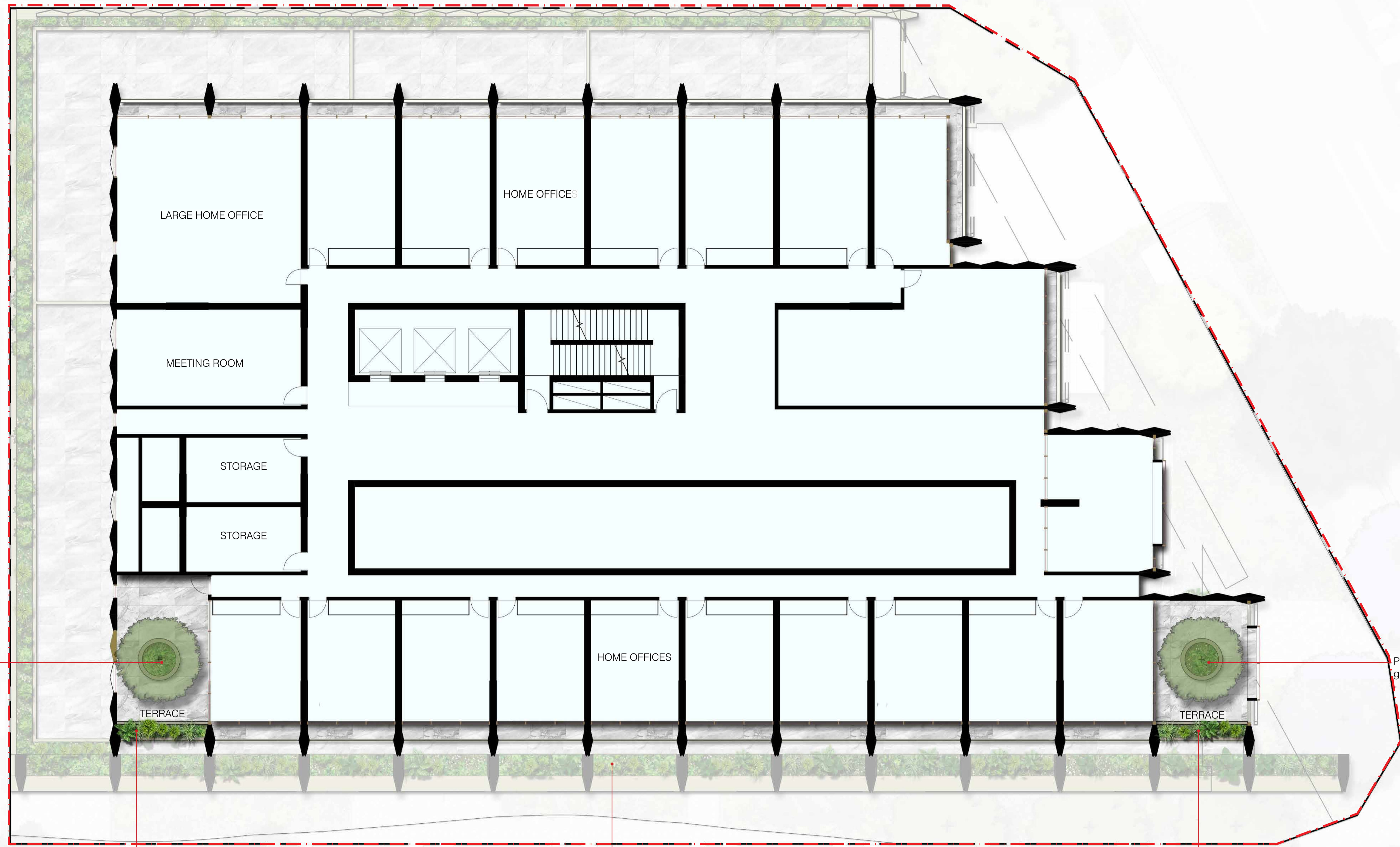




LEVEL 04

299 CORONATION DRIVE - MILTON





Podium planter with tree and groundcovers. - depth 1000mm

Podium planter with tree and groundcovers. - depth 1000mm

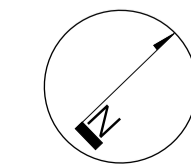
Podium planter with cascading plants and groundcovers. - depth 600mm

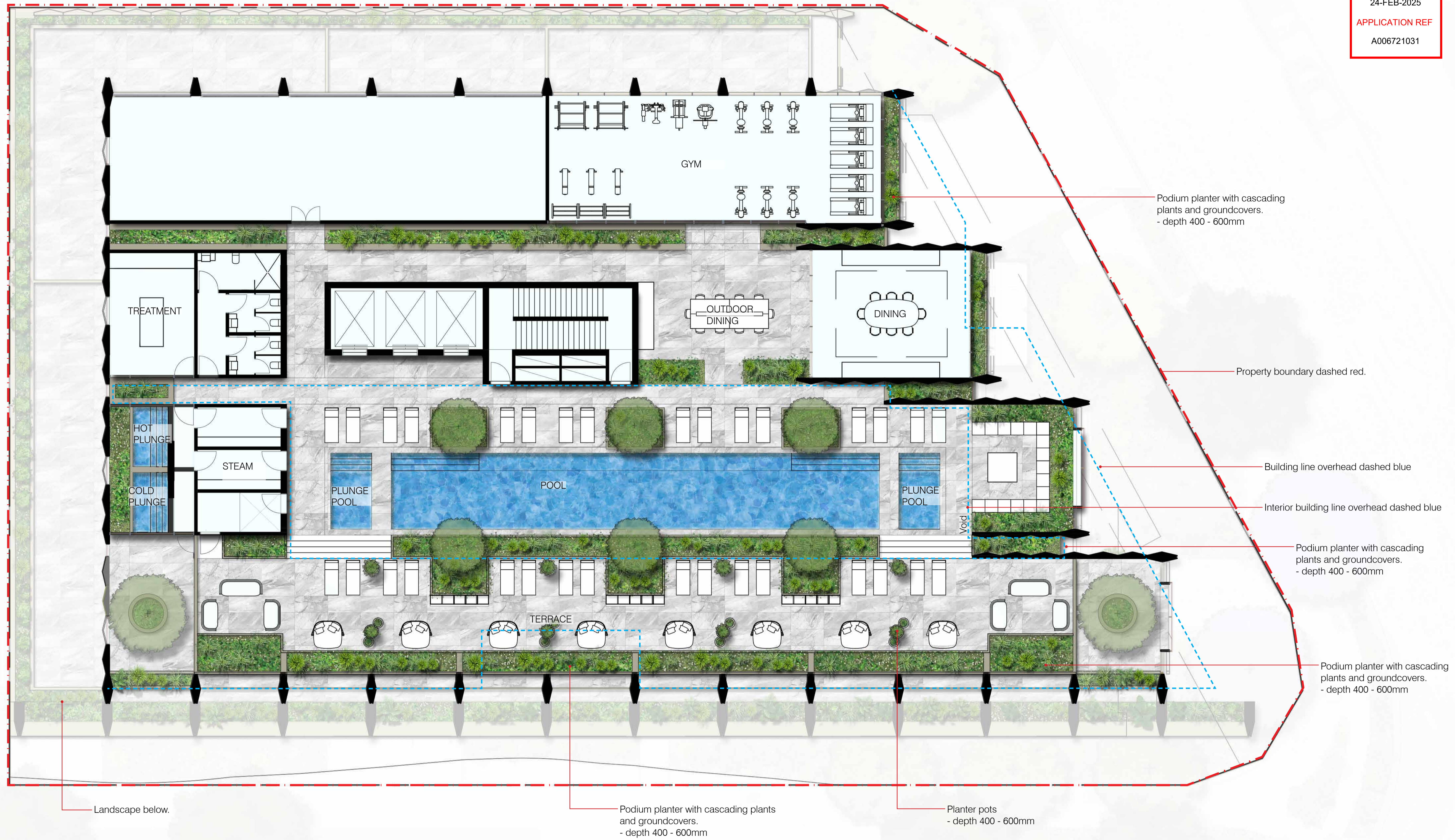
Level 4 planter below.

Podium planter with cascading plants and groundcovers. - depth 600mm

LEVEL 28 - HOME OFFICE

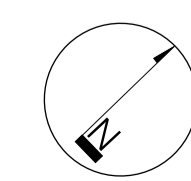
299 CORONATION DRIVE - MILTON

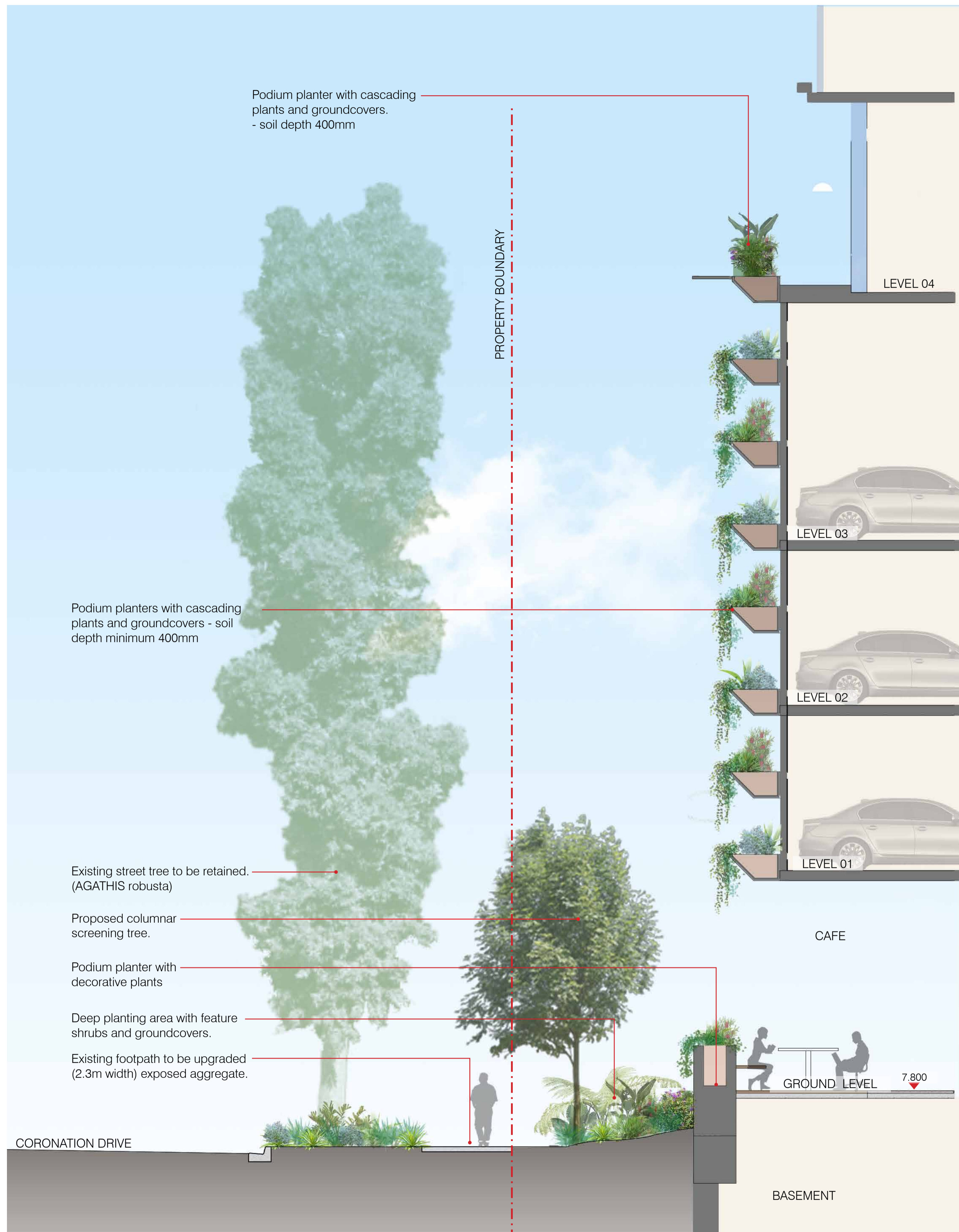




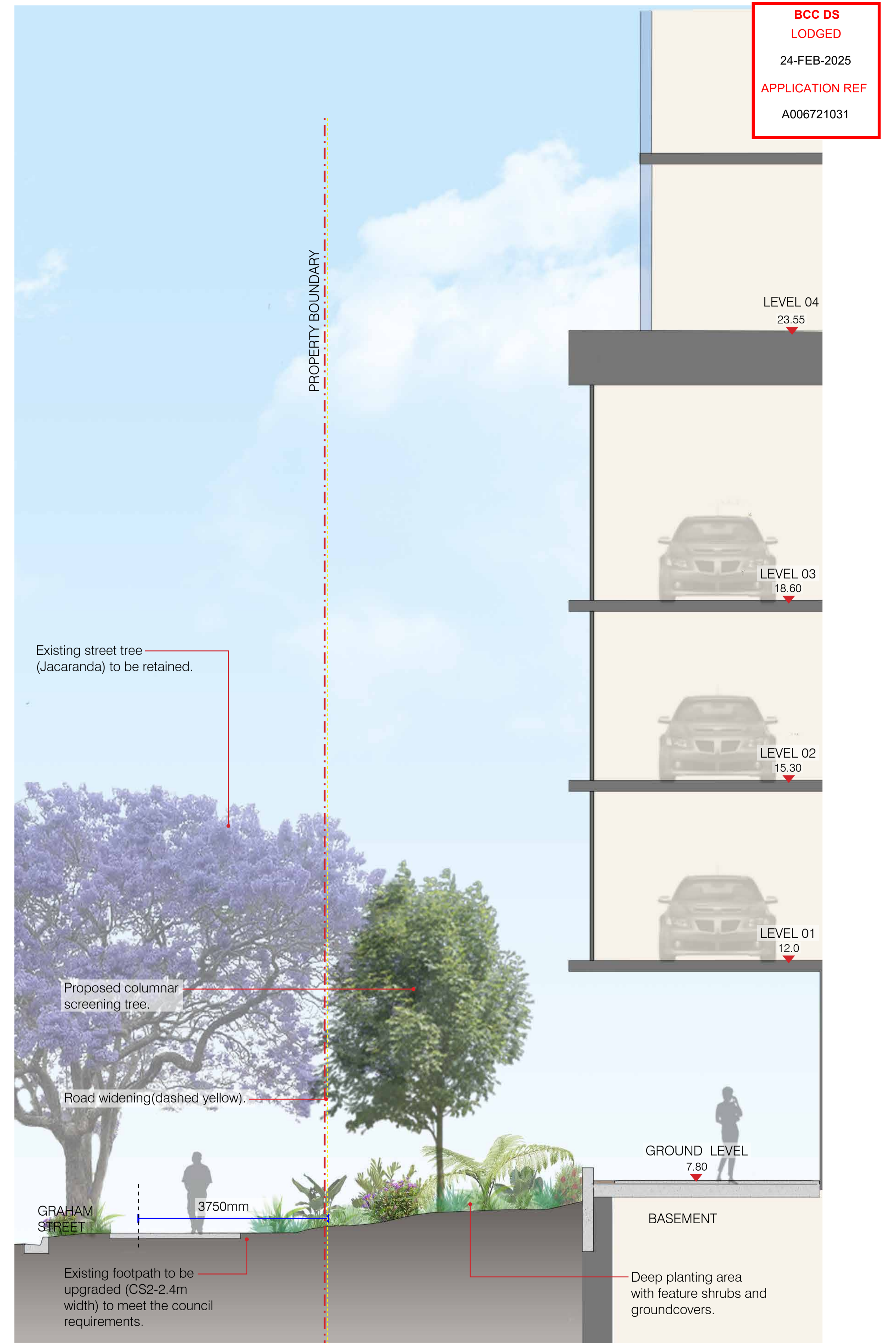
LEVEL 29 - POOL

299 CORONATION DRIVE - MILTON





SECTION A
1:50 @ A1






SECTION B
1:50 @ A1

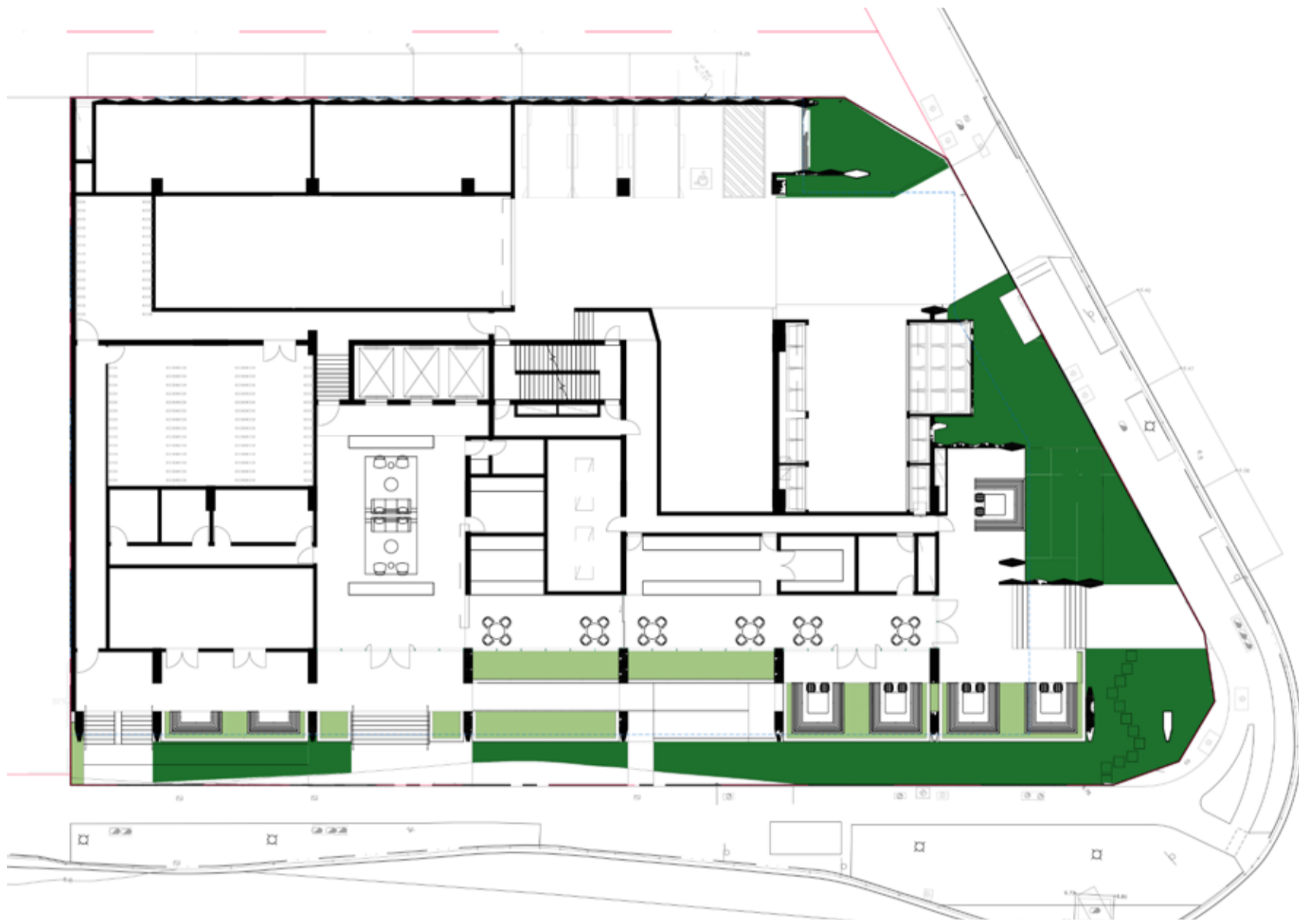
LANDSCAPE SECTIONS

299 CORONATION DRIVE - MILTON

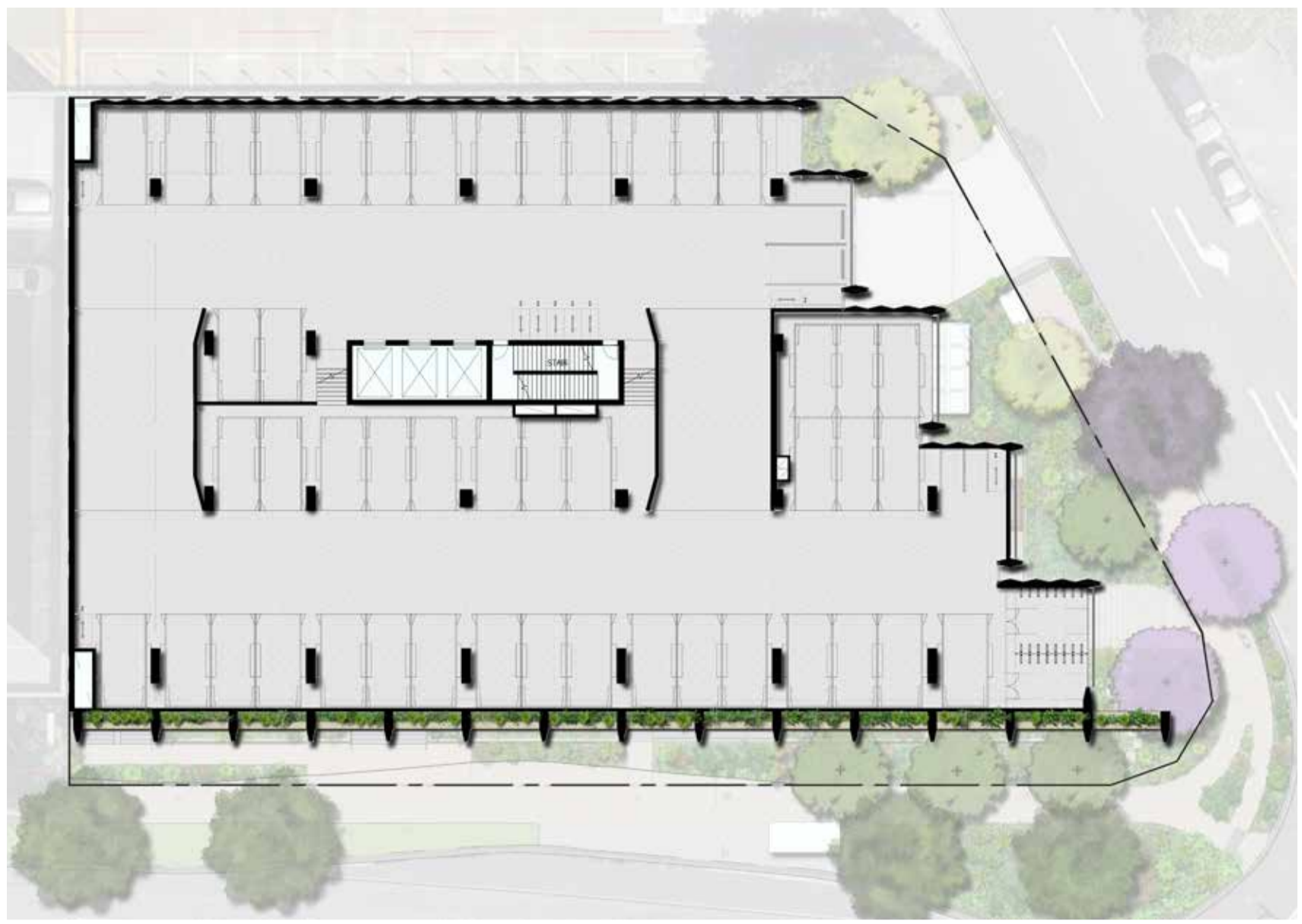
BCC DS
 LODGED
 24-FEB-2025
 APPLICATION REF
 A006721031

LEGEND

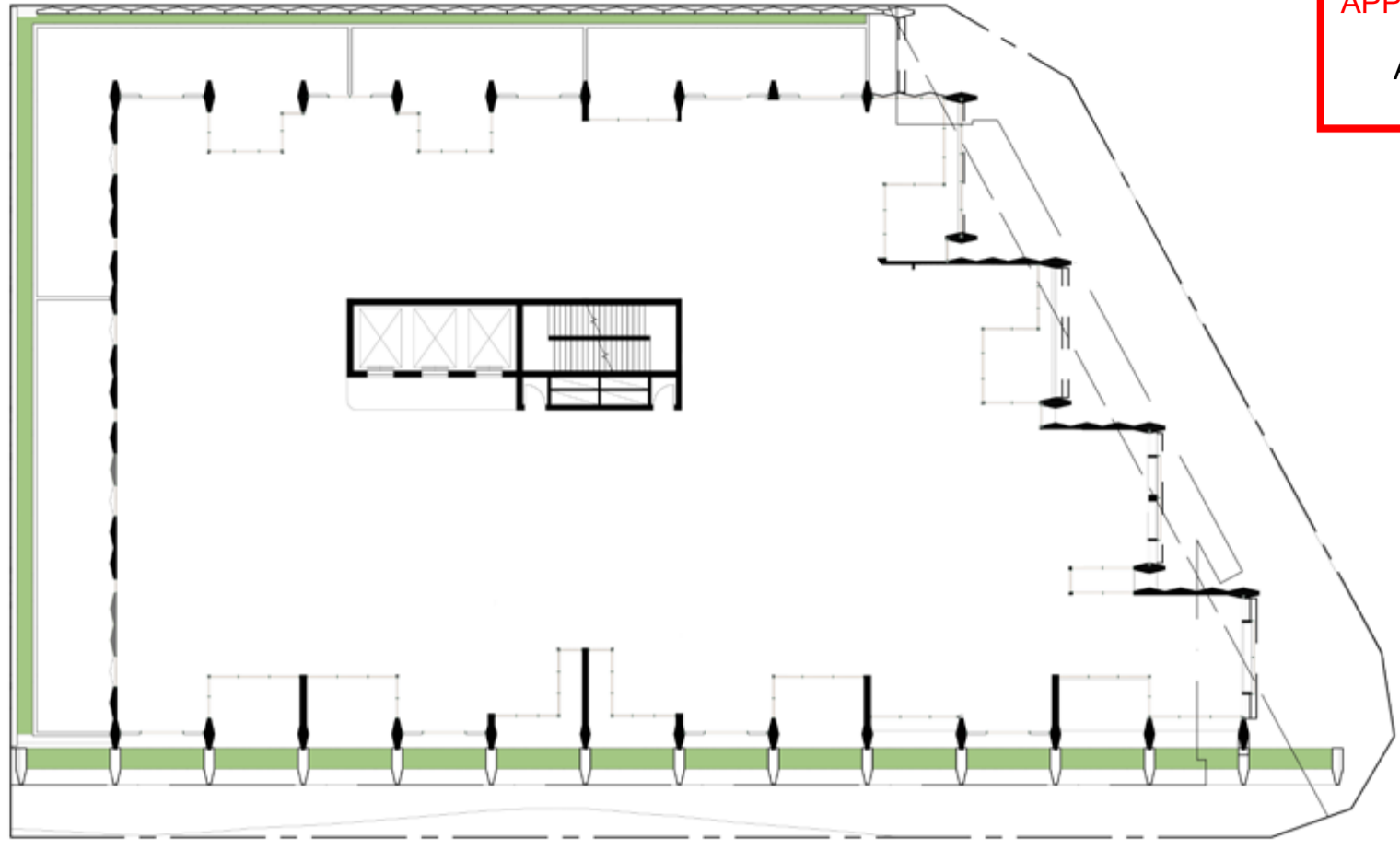
-  DEEP PLANTING
-  LOW PODIUM PLANTER
-  MEDIUM PODIUM PLANTER



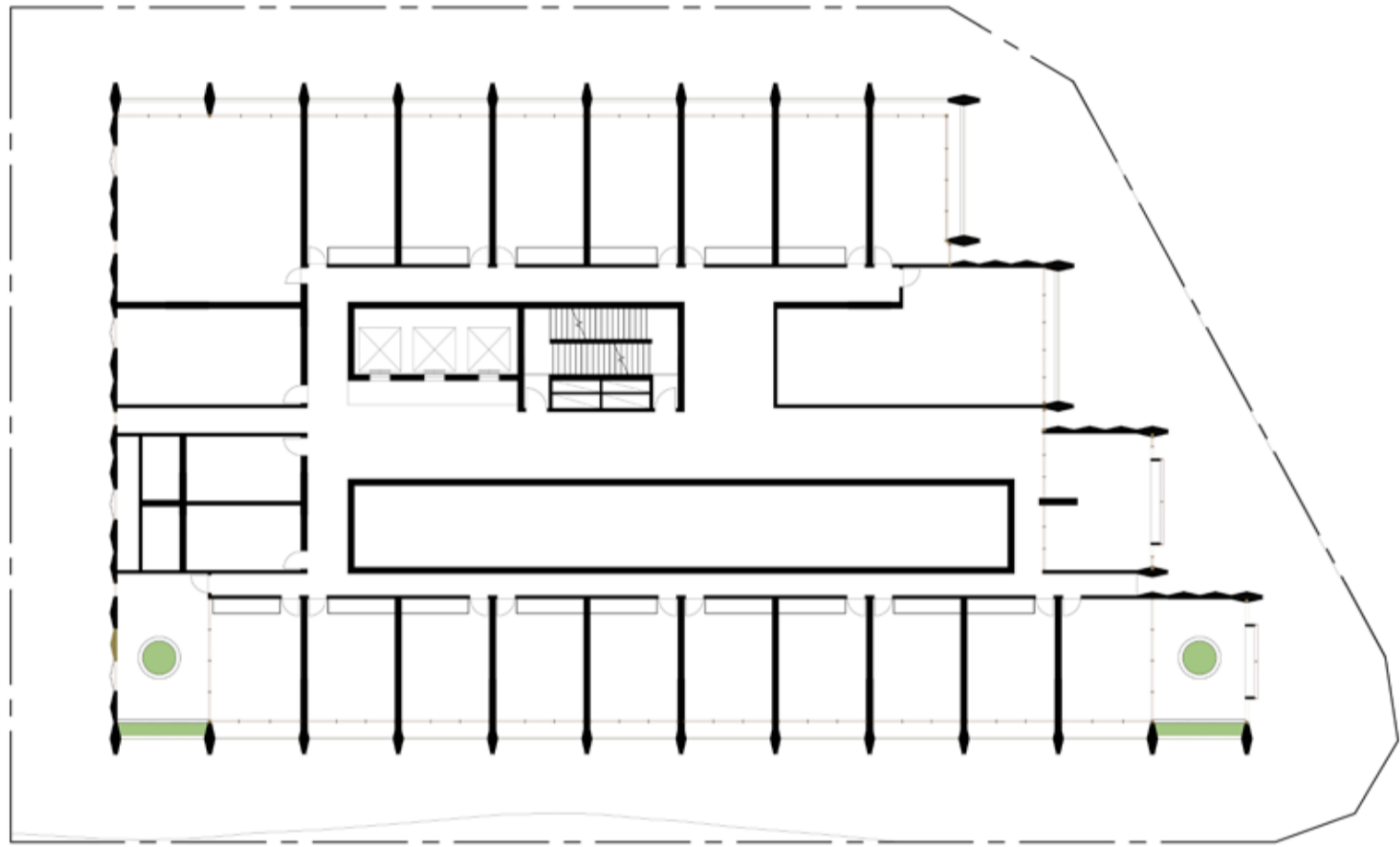
GROUND FLOOR



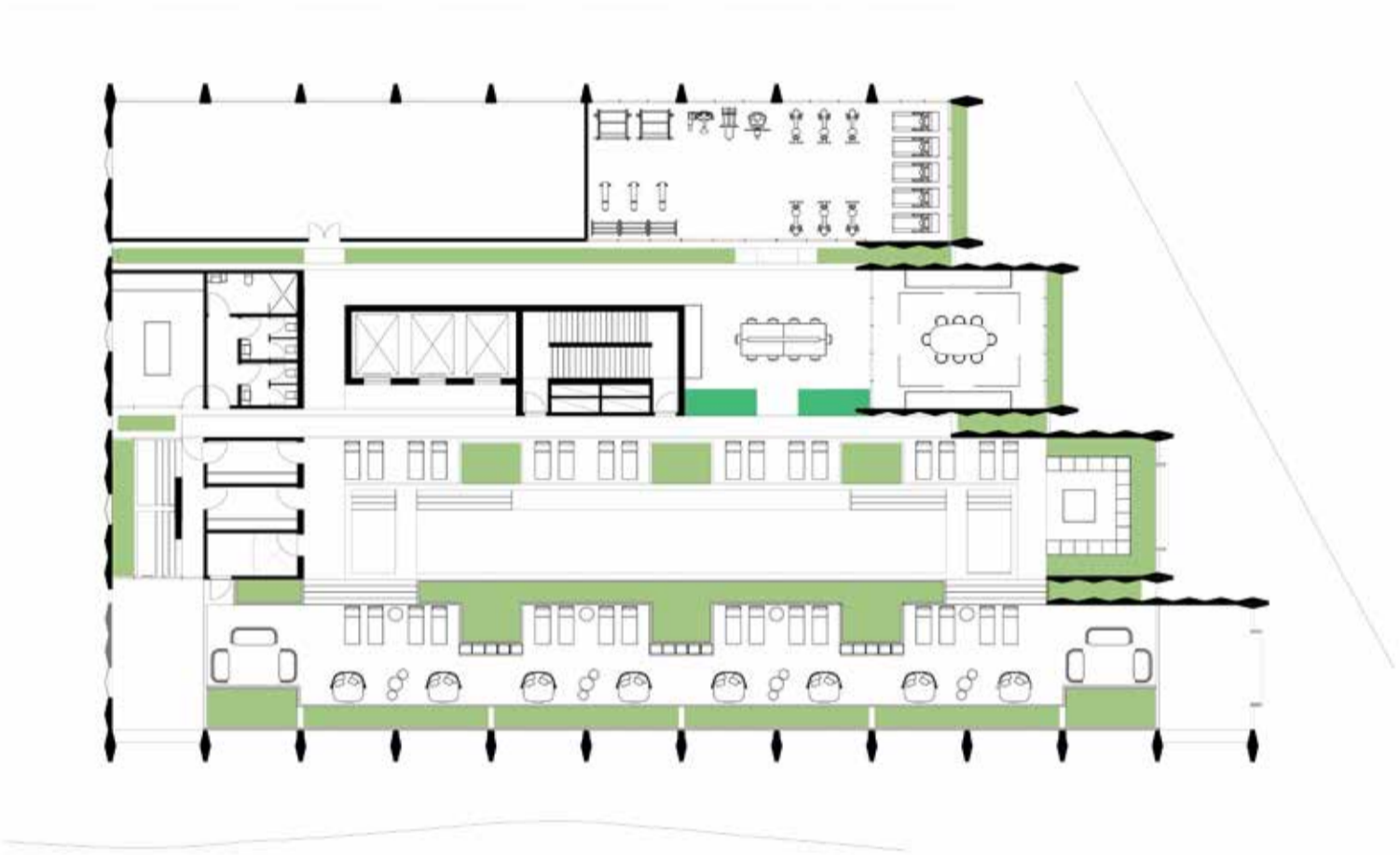
TYPICAL LEVEL 01, 02 & 03



LEVEL 04



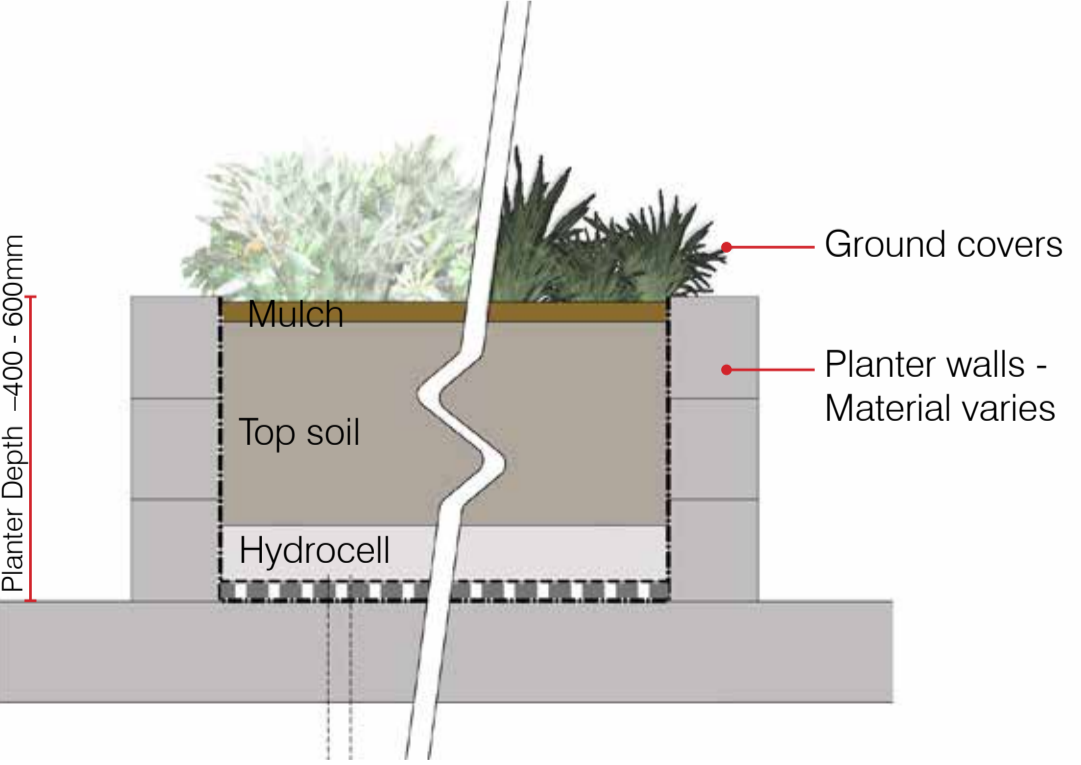
HOME OFFICE LEVEL 28



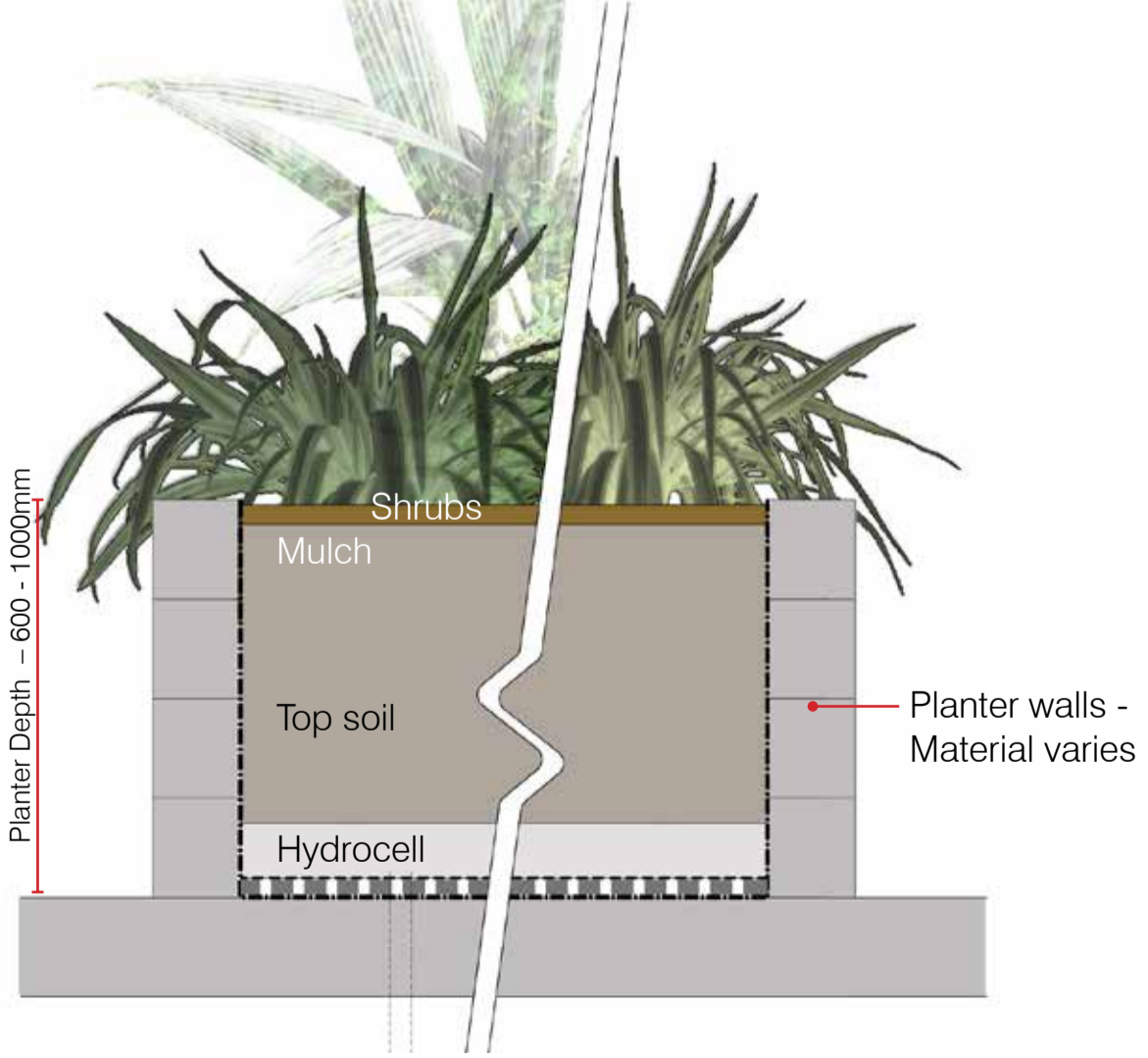
POOL LEVEL 29

PLANTER MAINTENANCE:
 Garden beds located adjacent to walkway or ground level terrace, to be maintained from adjacent on grade access points.
 Garden beds maintained 'off grade' will be maintained from appropriate anchor connections safely accessed from communal 'on grade' areas or from an above abseil system.

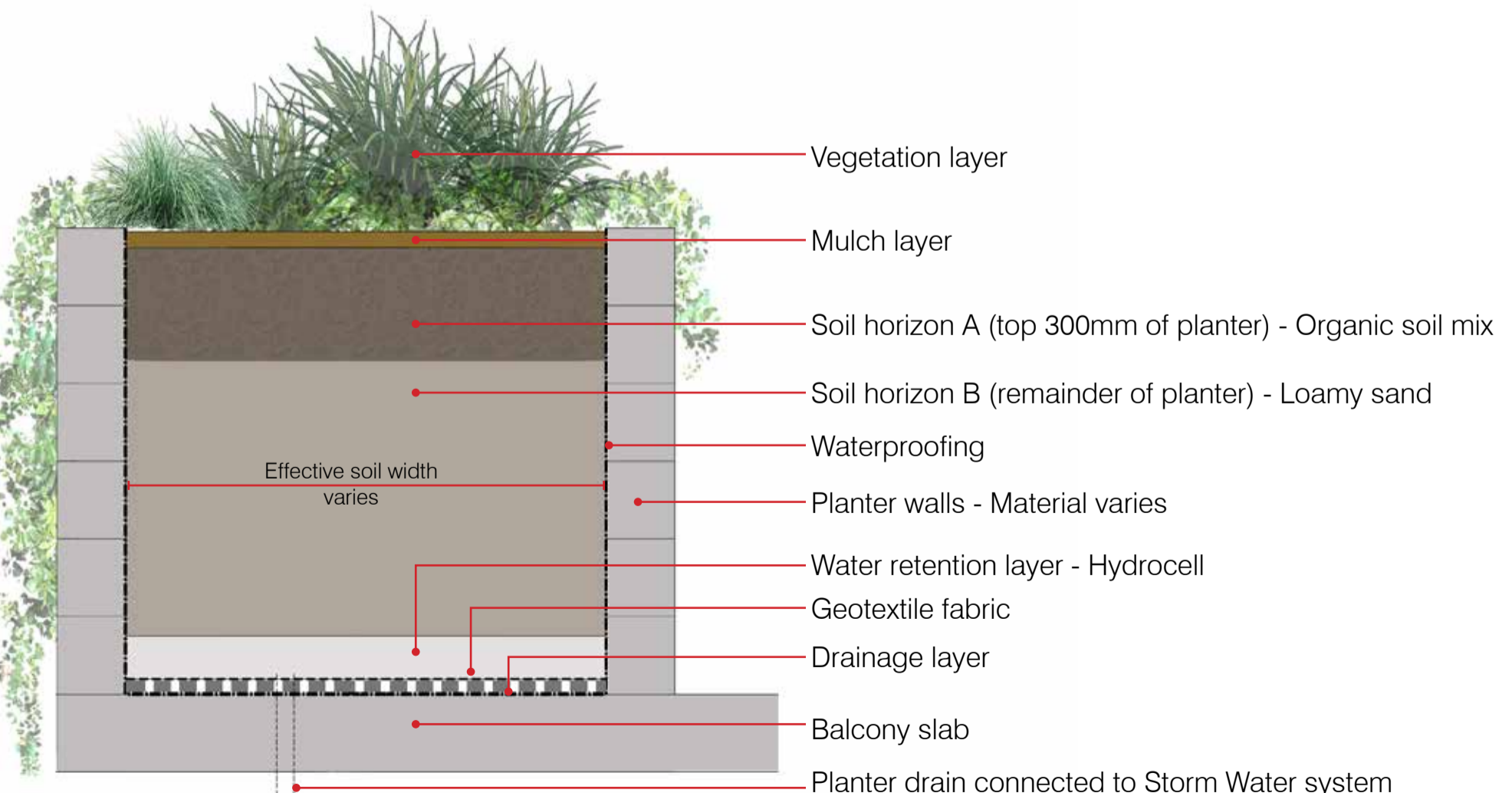
IRRIGATION:
 LANDSCAPE podium AREA
 TOTAL: 618m2 approximately
 (GROUND LEVEL: 76m2 + LEVEL 01-04: 349m2 + LEVEL 28: 8m2 + ROOFTOP:185m2)
 $618 \times 0.75 = 463.5$
 $463.5 \times 0.025 = 11.6\text{kL}$
 $11.6 \times 2 \text{ weeks} = 24\text{kL TANK}$



LOW PODIUM PLANTER - 400-600mm



MEDIUM PODIUM PLANTER - 600-1000mm



TOP SOIL PROFILE & TYPICAL PLANTER SYSTEM

PLANTER DETAILS
 299 CORONATION DRIVE - MILTON

Planting Character

Plant Species

BCC DS
LODGED
24-FEB-2025
APPLICATION REF
A006721031



DICHONDRA argentea 'Silver Falls'
Silver Nickel Vine



APTENIA cordifolia
Heartleaf Ice Plant



CARISSA macrocarpa 'Desert Star'
Natal Plum



CASUARINA glauca 'Cousin It'
Shag Pile

FACADE PLANTERS



SANSEVIERIA trifasciata
Snake Plant



CHAMAEDOREA elegans
Parlour Palm



CRASSULA ovata
Jade plant



SENECIO Trident Blue
Blue Chalksticks

GROUND & PODIUM PLANTERS



PHILODENDRON 'Xanadu'
Xanadu Philodendron



PLECTRANTHUS australis
Swedish Ivy



ZAMIA furfuracea
Cardboard Palm