



APPENDIX 6 LANDSCAPE CONCEPT PLAN

AP06

BCC DS

RECEIVED

04/06/2026

APPLICATION REF

A007041580

BCC DS
RECEIVED
04/06/2026
APPLICATION REF
A007041580

Residential Development

36 Selborne St, Mount Gravatt East, QLD, 4122

citicene



Landscape Aim

Create a landscape that complements the character of the multiple dwelling development while providing an atmosphere that is inviting with finishes that are practical and durable.

Landscape Objectives

1. Ensure species selection is appropriate for local conditions and climate. Use species approved and recommended by Brisbane City Council.
2. Integrate the site with the surrounding landscape context through appropriate vegetation species selection and positioning.
3. Position shade trees to strengthen the site's identity and provide shade for residents.
4. Ensure landscaping is of a suitable scale in relation to the proposed buildings, to visually soften the built form.
5. Meet Brisbane City Council's deep planting requirements including large spreading trees where space permits.
6. Provide sufficient landscape buffers to property boundaries in accordance with the Brisbane City Council landscape code. Use upper, mid, and lower storey species.

Plant Schedule

Trees

BACKHOUSIA citriodora - Lemon Myrtle
 CALLISTEMON viminalis - Weeping Bottlebrush
 CUPANIOPSIS anacardioides - Tuckeroo
 GREVILLEA baileyana - White Oak
 TRISTANIOPSIS laurina 'Luscious'
 WATERHOUSEA floribunda - Weeping Lilly Pilly

Shrubs and Feature Plants

ALCANTAREA imperialis
 CALLISTEMON viminalis 'Green John'
 GREVILLEA 'Loopy Lou' - Loopy Lou Grevillea
 SYZYGIUM australe 'Aussie Southern'
 WESTRINGIA fruticosa - Coastal Rosemary
 ZAMIA furfuracea - Cardboard palm

Groundcovers

CASUARINA glauca prostrate 'Shagpile' - Prostrate Casuarina
 LIRIOPE muscari 'Stripey White'
 PITTOSPORUM tobira 'Miss Muffet'
 RHAPHIOLEPIS indica 'Snow Maiden'
 TRACHELOSPERMUM jasminoides 'Tricolour'
 WESTRINGIA fruticosa 'Smoky'
 WESTRINGIA fruticosa 'Wynyabbie Gem'
 ZOYSIA tenuifolia - No-mow Grass

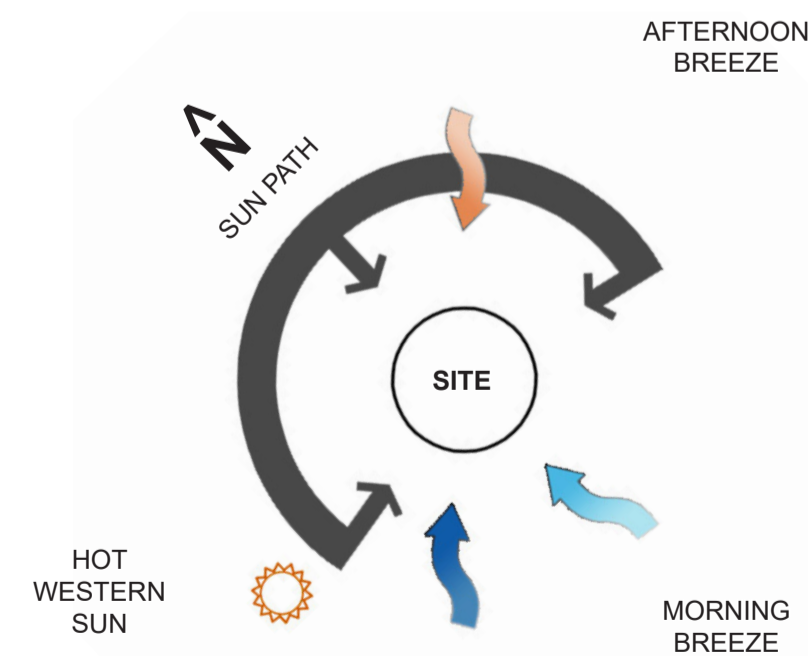
Notes

STREETSCAPE TYPE:
 NEIGHBOURHOOD STREET MINOR

- TREES IN TURF
- FOOTPATH WIDTH 1.2 M
- STANDARD PORTLAND GREY FOOTPATH
- INSITU CONCRETE KERB

SITE DETAILS:
 LOT 18 ON RP 66329
 SITE AREA: 624 sqm
 LANDSCAPE AREA: 98 sqm
 DEEP PLANTING: 61.2 sqm (9.8%)

Climatic Conditions



Trees



BACKHOUSIA citriodora
Lemon Myrtle



CALLISTEMON viminalis
Weeping Bottlebrush



CUPANIOPSIS anacardioides - Tuckeroo



GREVILLEA baileyana
White Oak



TRISTANIOPSIS laurina
'Luscious'



WATERHOUSEA floribunda
Weeping Lilly Pilly

Shrubs & Feature Plants



ALCANTAREA imperialis



CALLISTEMON viminalis
'Green John'



GREVILLEA
'Loopy Lou'



SYZYGIUM australe
'Aussie Southern'



WESTRINGIA fruticosa
Coastal Rosemary



ZAMIA furfuracea

Groundcovers & Grasses



CASUARINA glauca prostrate
'Shagpile'



LIRIOPE muscari
'Stripey White'



WESTRINGIA fruticosa
'Smoky'



WESTRINGIA fruticosa
'Wynyabbie Gem'



PITTOSPORUM tobira
'Miss Muffet'



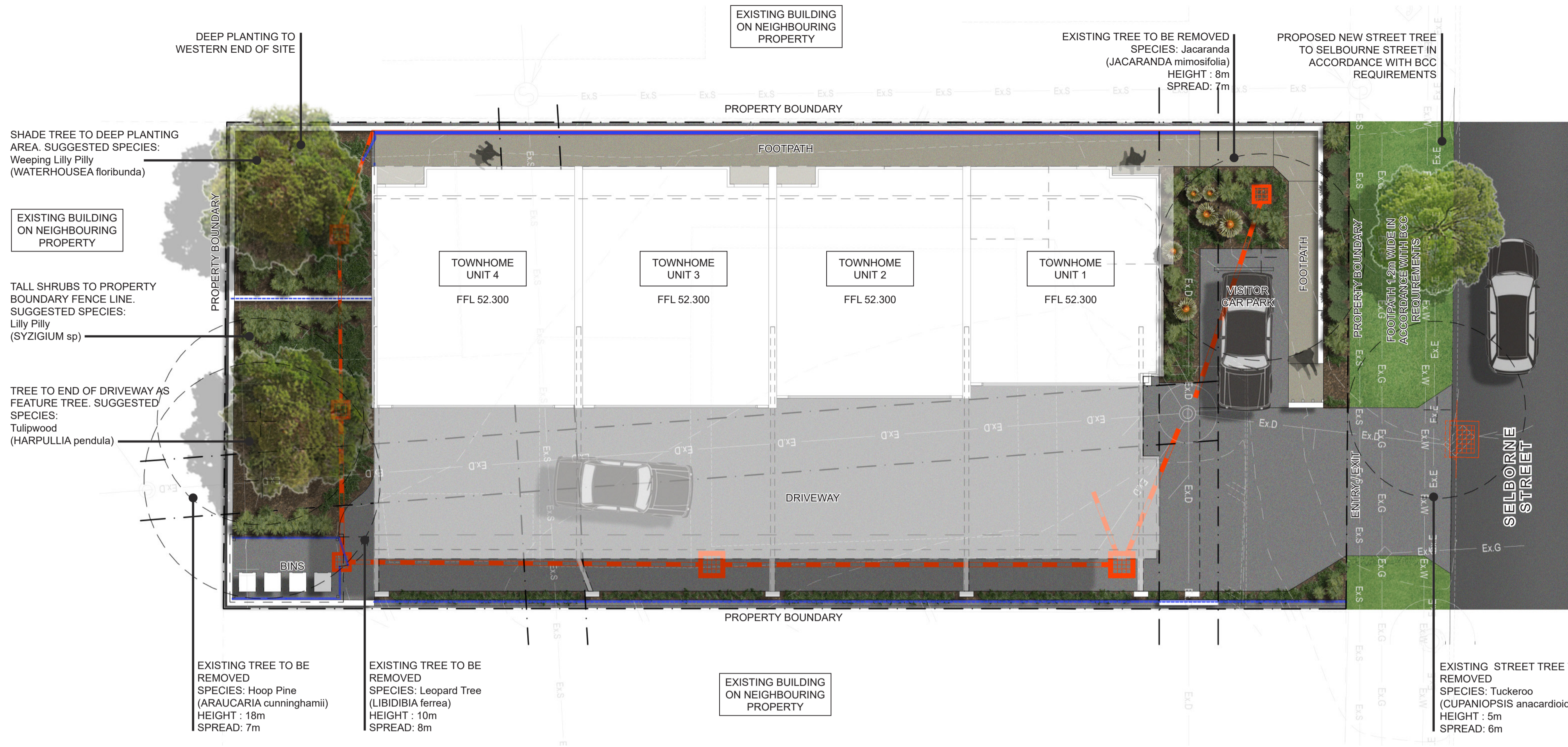
RHAPHIOLEPIS indica
'Snow Maiden'



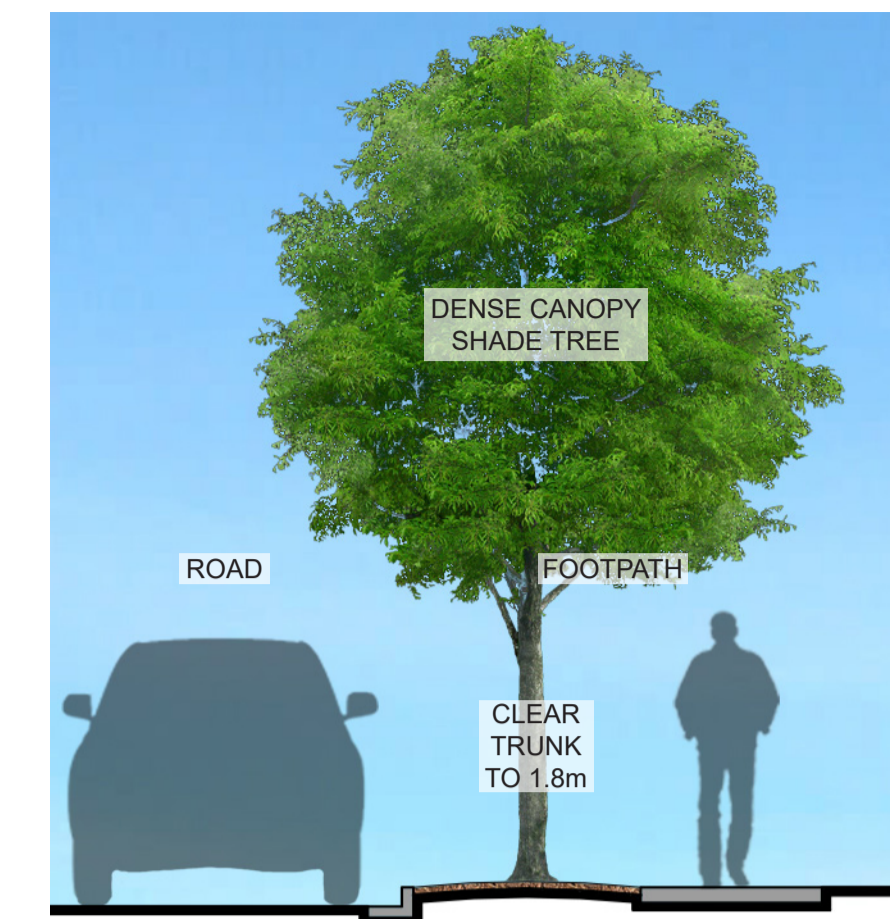
TRACHELOSPERMUM jasminoides
'Tricolour'



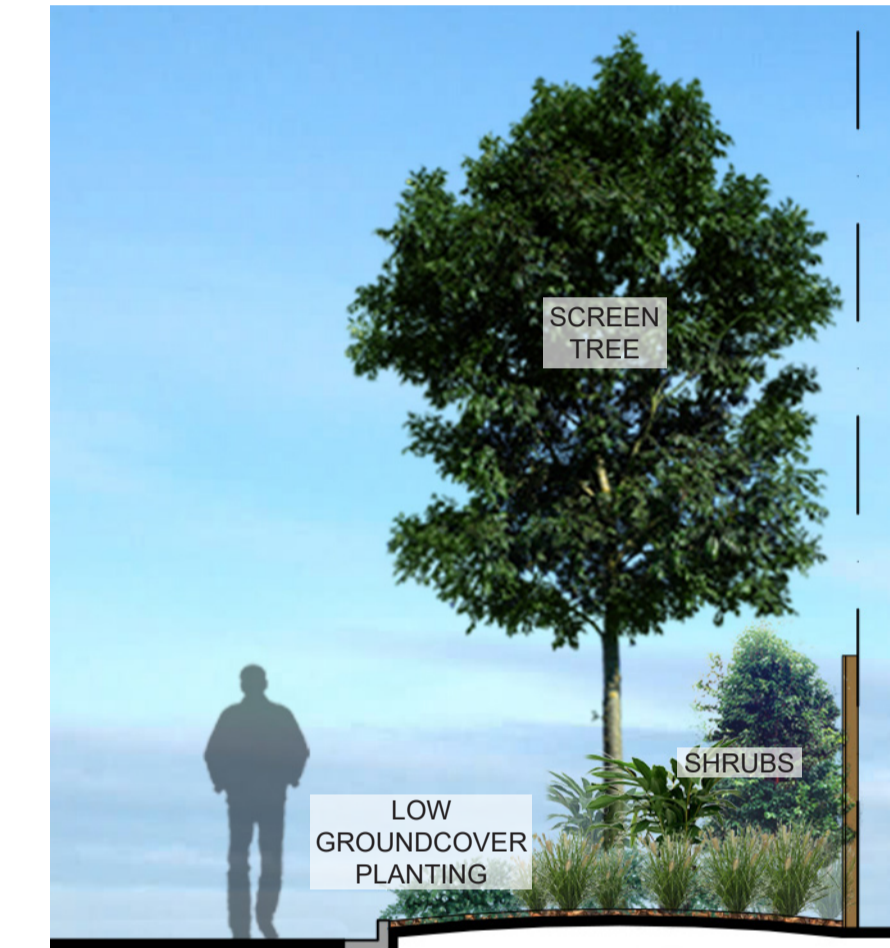
ZOYSIA tenuifolia



Typical Landscape Details



Street Tree
Scale 1:50 @ A1



Tiered Landscape Buffer
Scale 1:50 @ A1

Scale 1:100 @ A1 SIZE
 1.5 0 1 2 3 4 5m

APPROVAL

BCC DS
RECEIVED
04/06/2026
APPLICATION REF
A007041580

citicene

w: www.citicene.com.au | p: 07 3161 6420 | e: mail@citicene.com.au

The information contained in these drawings are confidential and may be legally privileged.
Unauthorised reproduction or amendment is not permitted. Please contact Citicene.

AILA Registered Landscape Architects
© Copyright 2026

