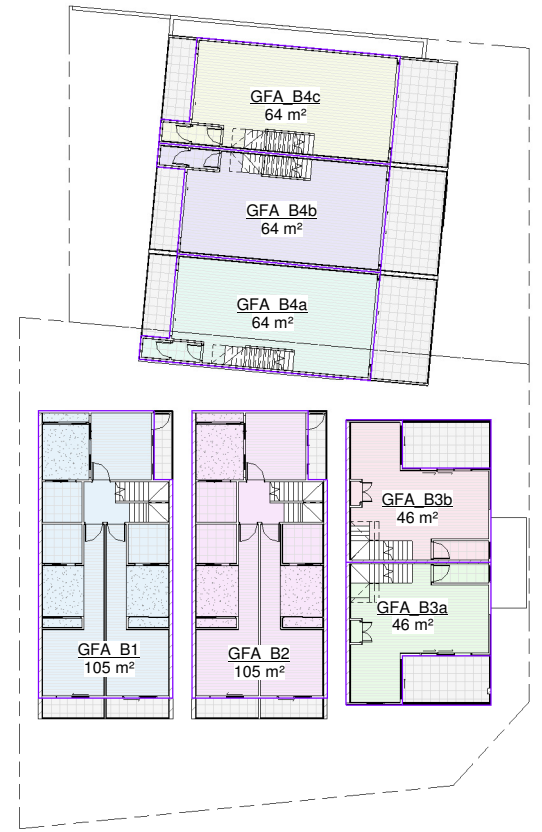


Area Schedule (GFA)		
Level	Name	Area
GROUND FLOOR	GFA_B1	52 m <sup>2</sup>
LEVEL 01	GFA_B1	105 m <sup>2</sup>
LEVEL 02	GFA_B1	105 m <sup>2</sup>
GFA_B1: 3		263 m <sup>2</sup>
GROUND FLOOR	GFA_B2	52 m <sup>2</sup>
LEVEL 01	GFA_B2	105 m <sup>2</sup>
LEVEL 02	GFA_B2	105 m <sup>2</sup>
GFA_B2: 3		263 m <sup>2</sup>
GROUND FLOOR	GFA_B3a	31 m <sup>2</sup>
LEVEL 01	GFA_B3a	46 m <sup>2</sup>
LEVEL 02	GFA_B3a	58 m <sup>2</sup>
LEVEL 03	GFA_B3a	20 m <sup>2</sup>
GFA_B3a: 4		154 m <sup>2</sup>
GROUND FLOOR	GFA_B3b	34 m <sup>2</sup>
LEVEL 01	GFA_B3b	46 m <sup>2</sup>
LEVEL 02	GFA_B3b	58 m <sup>2</sup>
LEVEL 03	GFA_B3b	20 m <sup>2</sup>
GFA_B3b: 4		157 m <sup>2</sup>
GROUND FLOOR	GFA_B4a	39 m <sup>2</sup>
LEVEL 01	GFA_B4a	64 m <sup>2</sup>
LEVEL 02	GFA_B4a	78 m <sup>2</sup>
LEVEL 03	GFA_B4a	30 m <sup>2</sup>
GFA_B4a: 4		211 m <sup>2</sup>
GROUND FLOOR	GFA_B4b	44 m <sup>2</sup>
LEVEL 01	GFA_B4b	64 m <sup>2</sup>
LEVEL 02	GFA_B4b	78 m <sup>2</sup>
LEVEL 03	GFA_B4b	30 m <sup>2</sup>
GFA_B4b: 4		216 m <sup>2</sup>
GROUND FLOOR	GFA_B4c	53 m <sup>2</sup>
LEVEL 01	GFA_B4c	64 m <sup>2</sup>
LEVEL 02	GFA_B4c	78 m <sup>2</sup>
LEVEL 03	GFA_B4c	30 m <sup>2</sup>
GFA_B4c: 4		224 m <sup>2</sup>
<b>Grand total: 26</b>		<b>1488 m<sup>2</sup></b>

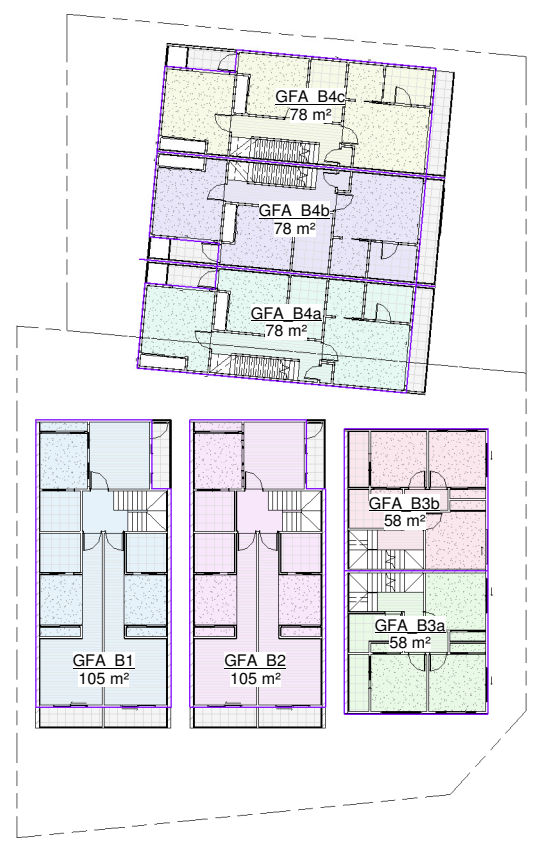
- Legend**
- GFA\_B1
  - GFA\_B2
  - GFA\_B3a
  - GFA\_B3b
  - GFA\_B4a
  - GFA\_B4b
  - GFA\_B4c



**1 GROUND FLOOR**  
1 : 200 on A1 / 1 : 400 on A3



**2 LEVEL 01**  
1 : 200 on A1 / 1 : 400 on A3



**3 LEVEL 02**  
1 : 200 on A1 / 1 : 400 on A3



**4 LEVEL 03**  
1 : 200 on A1 / 1 : 400 on A3

19 DA-1 UPDATE LEVELS OF BUILDINGS	21.04.2026
18 DA-1 REDESIGN GROUND FLOORS	31.03.2026
17 DA-1 Additional Proposed Subdivision	25.03.2026
16 DA-1 PRELIMINARY	20.03.2026
15 UPDATED LAYOUT	03.02.2026
14 P.O.S CALCULATIONS	28.01.2026
13 ROOMING ACCOMMODATION	20.01.2026
12 UPDATED CONSULTANT ISSUE	19.12.2025
11 CONSULTANT ISSUE	11.12.2025
10 REVISED CONCEPT	01.12.2025
9 REVISED CONCEPT	25.11.2025
8 REVISED CONCEPT	05.11.2025
7 REVISED CONCEPT	27.10.2025
6 HOUSES CONCEPT 2	29.09.2025
# DESCRIPTION	DATE

**REVISION HISTORY**

NOT FOR CONSTRUCTION

ACN: 110893453  
 US - Level 1 - 70 Bay Terrace, WYNNUM QLD 4178  
 P.O. BOX 5129 MANLY QLD 4179  
 email: enquiries@thinktankarchitects.com.au  
 phone: (07)3348 3727 / mobile: 0412 087 196

These drawings are the copyright of THINK TANK Architects and are not to be reproduced in any way without the consent of THINK TANK Architects

PROJECT	31-24	
MIX USES DEVELOPMENT		
ADDRESS	6-11 FARNELL ST, CHERMSIDE	
CLIENT	TANIA HATCHMAN	
ARCHITECT	MICHAEL JULLYAN	
DRAWN	CHECKED	
MP	MJ	
ISSUE	DA-1	
SHEET TITLE	GFA	
SHEET NUMBER	REV	REV DATE
ZZDA-403 19		21.04.2026

**thinktank** architects  
www.thinktankarchitects.com.au