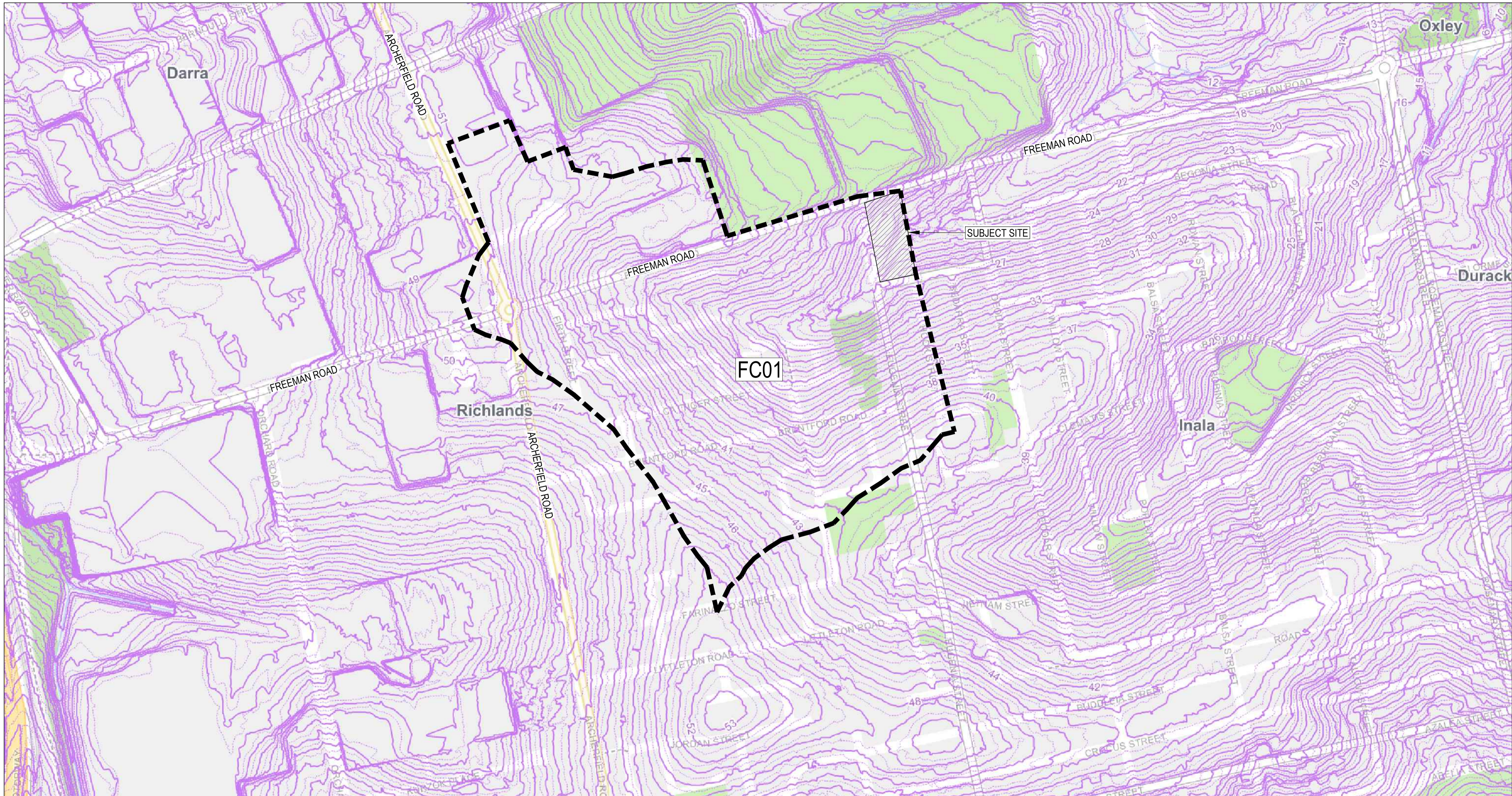


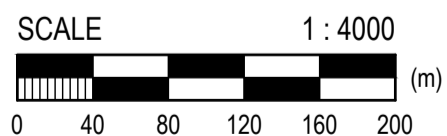
STORMWATER CATCHMENT TABLE		
STORM EVENTS: MINOR 2% AEP, MAJOR 1% AEP INTENSITY (1hr/10yr ARI): 63.6mm/hr		
CATCHMENT NAME	CATCHMENT AREA (ha)	FRACTION IMPERVIOUS
FC01	43.5640	0.6000

BCC DS
RECEIVED
 03/10/2025
APPLICATION REF
 A006548499



CONSULTANT : NAXOS ENGINEERS
 DISCIPLINE : CIVIL DIVISION
 CONTACT : JACK BAILLIE
 TELEPHONE : 1300 598 544
 EMAIL : jack@naxosengineers.com.au

INFORMATION ONLY



NAXOS ENGINEERS
 T 1300 598 544
 E info@naxosengineers.com.au
 Level 1, Suite B
 557 Gregory Terrace, Fortitude Valley, Qld 4006
 PO Box 224, Spring Hill QLD 4004
 NAXOSENGINEERS.COM.AU

AMENDMENTS			
No.	DATE	DESCRIPTION	DRAWN
A	30.06.2025	ISSUE FOR HYDRAULIC REPORT	JB

Associated Consultant: ROOFBROOK PTY LTD	
Approved: GREGG TYQUIN	Drawn: JB Design: JB
RPEQ. 1528	Checked: GT Supervisor: GF

DISCLAIMER NOTE:
 THIS PLAN WAS PREPARED FOR DISCUSSION AND ESTIMATING PURPOSES. THE LAYOUT SHOWN IS INDICATIVE ONLY AND MAY BE SUBJECT TO LOCAL AUTHORITY / GOVERNMENT REQUIREMENTS AND FURTHER DETAILED ENGINEERING DESIGN.
 THIS PLAN SHALL NOT BE USED FOR CONSTRUCTION PURPOSES AND IS NOT TO BE USED FOR ANY OTHER PURPOSE OR BY ANY OTHER PERSON OR CORPORATION OTHER THAN LISTED AS THE 'CLIENT' ON THIS PLAN.
 NAXOS ENGINEERS PTY LTD ACCEPTS NO RESPONSIBILITY FOR ANY LOSS OR DAMAGE SUFFERED HOWEVER SO ARISING TO ANY PERSON OR CORPORATION WHO MAY USE OR RELY ON THIS PLAN IN CONTRAVENTION OF THE TERMS OF THIS CLAUSE. ALL COPIES OF THIS PLAN MUST INCLUDE THIS DISCLAIMER.

IMAGERY, CADASTRAL AND SURVEY DATA DISCLAIMER:
 WHILE EVERY CARE IS TAKEN BY NAXOS ENGINEERS PTY LTD TO ENSURE THE ACCURACY OF THE DATA SUPPLIED BY LOCAL AUTHORITIES, DIAL BEFORE YOU DIG (DBVD) RECORDS, AS CONSTRUCTED INFORMATION AND DETAILED SURVEY, WE MAKE NO REPRESENTATIONS OR WARRANTIES ABOUT ITS ACCURACY, RELIABILITY, COMPLETENESS OR SUITABILITY FOR ANY PARTICULAR PURPOSE AND DISCLAIM ALL RESPONSIBILITY AND ALL LIABILITY (INCLUDING WITHOUT LIMITATION, LIABILITY IN NEGLIGENCE) FOR ALL EXPENSES, LOSSES, DAMAGES (INCLUDING INDIRECT OR CONSEQUENTIAL DAMAGE) AND COSTS WHICH MAY BE INCURRED AS A RESULT OF DATA BEING INACCURATE OR INCOMPLETE IN ANY WAY AND FOR ANY REASON.

North:	Size of Land: 9853m ²	Client: ROOFBROOK PTY LTD
Scale: 1:4000	Project: PROPOSED DEVELOPMENT AT 290 FREEMAN ROAD, INALA 4077	Job No. 25-136
Orig. Dwg. Size A1		Revision: A

EXTERNAL CATCHMENT PLAN

ROOFBROOK PTY LTD

PROPOSED DEVELOPMENT AT
290 FREEMAN ROAD, INALA 4077

A

BCC DS
RECEIVED
 03/10/2025
APPLICATION REF
 A006548499



CONSULTANT : NAXOS ENGINEERS
 DISCIPLINE : CIVIL DIVISION
 CONTACT : JACK BAILLIE
 TELEPHONE : 1300 598 544
 EMAIL : jack@naxosengineers.com.au

INFORMATION ONLY

NAXOS ENGINEERS
 T 1300 598 544
 E info@naxosengineers.com.au
 Level 1, Suite B
 557 Gregory Terrace, Fortitude Valley, Qld 4006
 PO Box 224, Spring Hill QLD 4004
 NAXOSENGINEERS.COM.AU

AMENDMENTS			
No.	DATE	DESCRIPTION	DRAWN
A	30.06.2025	ISSUE FOR HYDRAULIC REPORT	JB

Associated Consultant:
 ROOFBROOK PTY LTD

Approved: GREGG TYQUIN

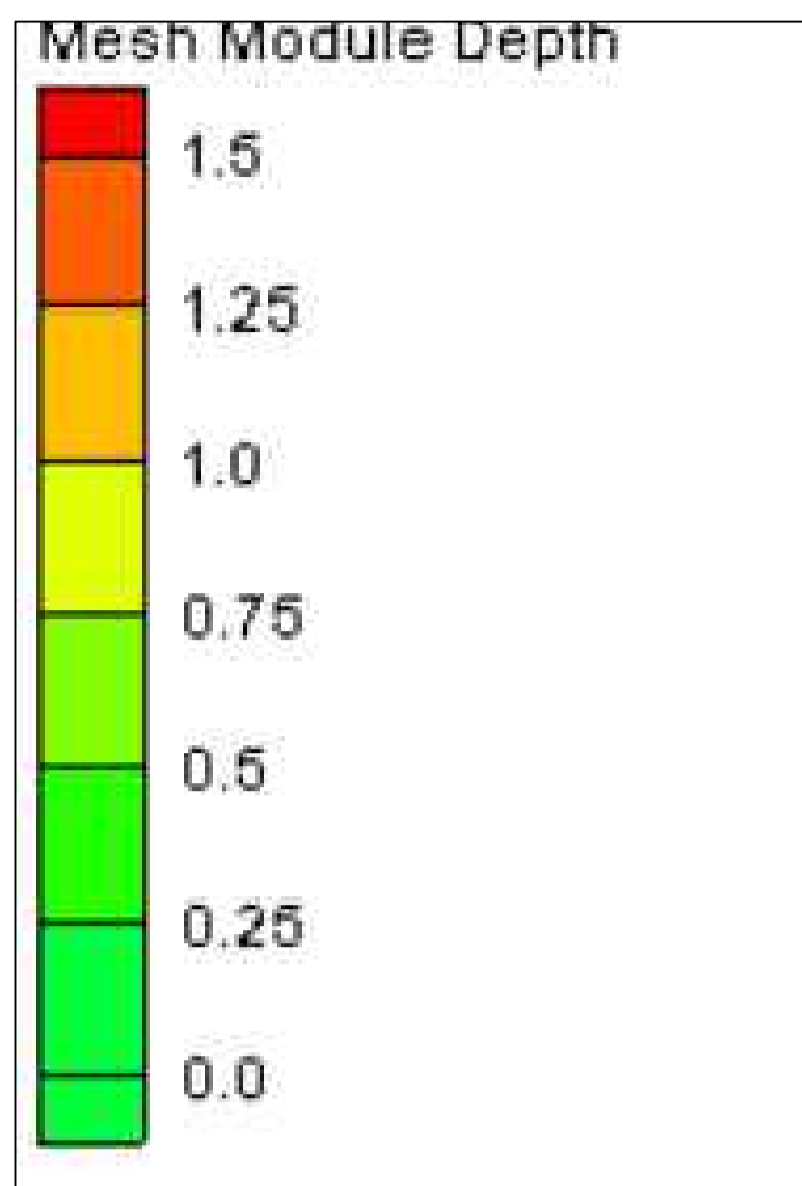
RPEQ: 1528 Date: .

Drawn:	Design:
Checked:	Supervisor:
GT	GF

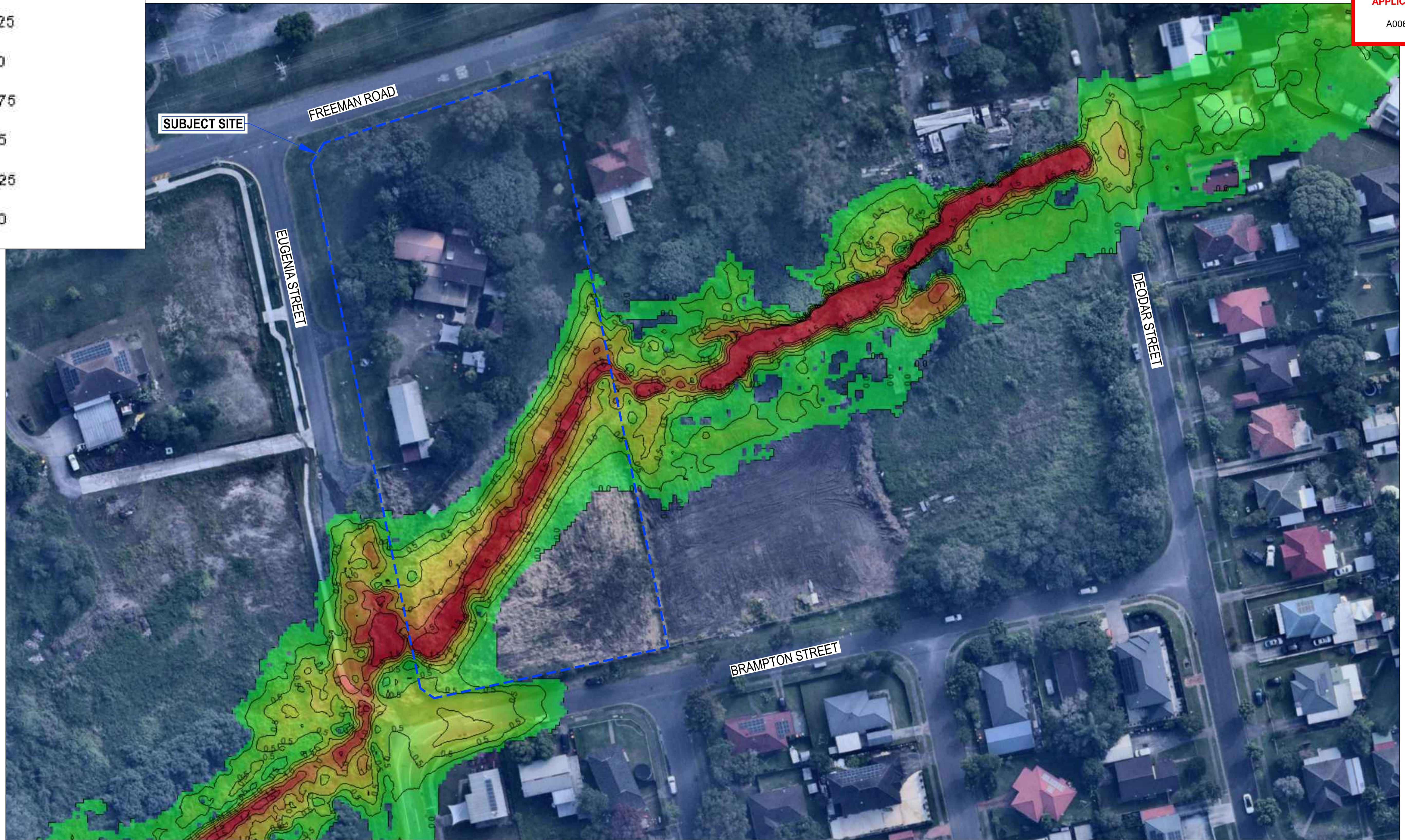
DISCLAIMER NOTE:
 THIS PLAN WAS PREPARED FOR DISCUSSION AND ESTIMATING PURPOSES. THE LAYOUT SHOWN IS INDICATIVE ONLY AND MAY BE SUBJECT TO LOCAL AUTHORITY / GOVERNMENT REQUIREMENTS AND FURTHER DETAILED ENGINEERING DESIGN.
 THIS PLAN SHALL NOT BE USED FOR CONSTRUCTION PURPOSES AND IS NOT TO BE USED FOR ANY OTHER PURPOSE OR BY ANY OTHER PERSON OR CORPORATION OTHER THAN LISTED AS THE 'CLIENT' ON THIS PLAN.
 NAXOS ENGINEERS PTY LTD ACCEPTS NO RESPONSIBILITY FOR ANY LOSS OR DAMAGE SUFFERED HOWEVER SO ARISING TO ANY PERSON OR CORPORATION WHO MAY USE OR RELY ON THIS PLAN IN CONTRAVENTION OF THE TERMS OF THIS CLAUSE. ALL COPIES OF THIS PLAN MUST INCLUDE THIS DISCLAIMER.

IMAGERY, CADASTRAL AND SURVEY DATA DISCLAIMER:
 WHILE EVERY CARE IS TAKEN BY NAXOS ENGINEERS PTY LTD TO ENSURE THE ACCURACY OF THE DATA SUPPLIED BY LOCAL AUTHORITIES, DIAL BEFORE YOU DIG (DBYD) RECORDS, AS CONSTRUCTED INFORMATION AND DETAILED SURVEY, WE MAKE NO REPRESENTATIONS OR WARRANTIES ABOUT ITS ACCURACY, RELIABILITY, COMPLETENESS, OR SUITABILITY FOR ANY PARTICULAR PURPOSE AND DISCLAIM ALL RESPONSIBILITY AND ALL LIABILITY (INCLUDING WITHOUT LIMITATION, LIABILITY IN NEGLIGENCE) FOR ALL EXPENSES, LOSSES, DAMAGES (INCLUDING INDIRECT OR CONSEQUENTIAL DAMAGES) AND COSTS WHICH MAY BE INCURRED AS A RESULT OF DATA BEING INACCURATE OR INCOMPLETE IN ANY WAY AND FOR ANY REASON.

North: 	Size of Land:	Client:	ROOFBROOK PTY LTD	Job No.:	25-136
	9853m ²	PROPOSED DEVELOPMENT AT 290 FREEMAN ROAD, INALA 4077		Revision:	
Scale:	N.T.S.	Project:	TUFLOW-01		



BCC DS
RECEIVED
 03/10/2025
APPLICATION REF
 A006548499



CONSULTANT : NAXOS ENGINEERS
 DISCIPLINE : CIVIL DIVISION
 CONTACT : JACK BAILLIE
 TELEPHONE : 1300 598 544
 EMAIL : jack@naxosengineers.com.au

INFORMATION ONLY

NAXOS
 ENGINEERS
 T 1300 598 544
 E info@naxosengineers.com.au
 Level 1, Suite B
 557 Gregory Terrace, Fortitude Valley, Qld 4006
 PO Box 224, Spring Hill QLD 4004
 NAXOSENGINEERS.COM.AU

AMENDMENTS			
No.	DATE	DESCRIPTION	DRAWN
A	30.06.2025	ISSUE FOR HYDRAULIC REPORT	JB

Associated Consultant:
 ROOFBROOK PTY LTD

Approved: GREGG TYQUIN

RPEQ: 1528 Date: .

Drawn: JB
 Design: JB
 Checked: GT
 Supervisor: GF

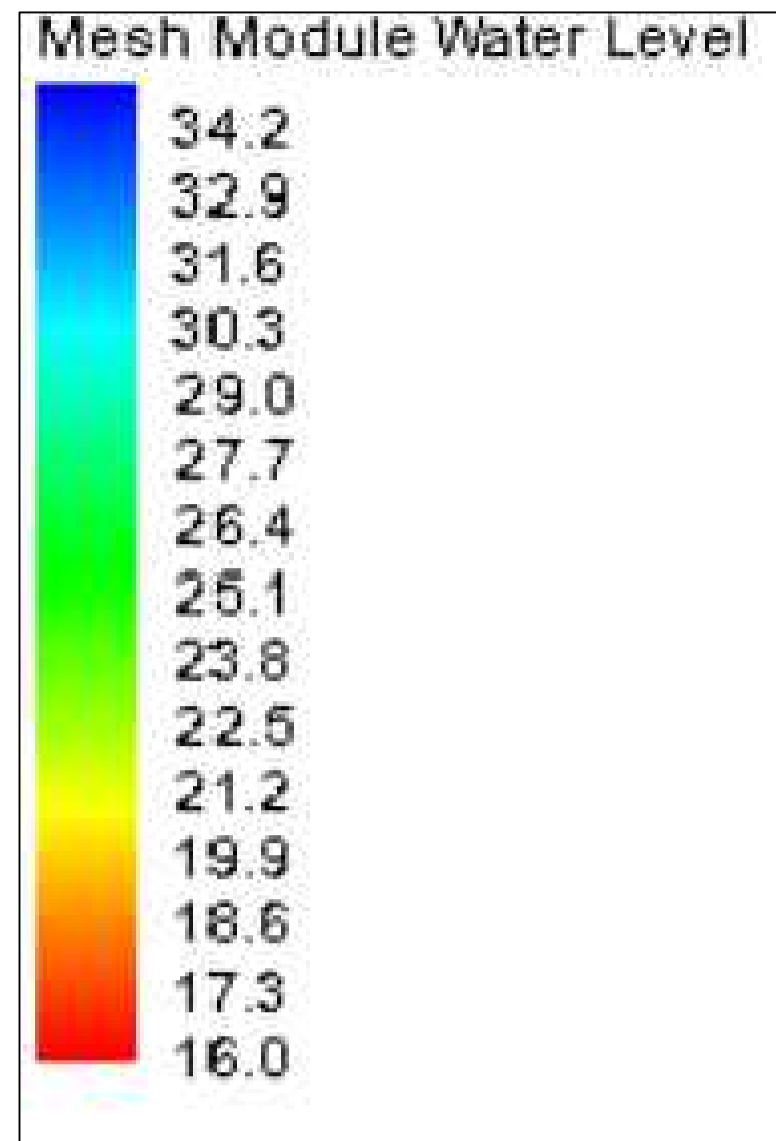
DISCLAIMER NOTE:
 THIS PLAN WAS PREPARED FOR DISCUSSION AND ESTIMATING PURPOSES. THE LAYOUT SHOWN IS INDICATIVE ONLY AND MAY BE SUBJECT TO LOCAL AUTHORITY / GOVERNMENT REQUIREMENTS AND FURTHER DETAILED ENGINEERING DESIGN.
 THIS PLAN SHALL NOT BE USED FOR CONSTRUCTION PURPOSES AND IS NOT TO BE USED FOR ANY OTHER PURPOSE OR BY ANY OTHER PERSON OR CORPORATION OTHER THAN LISTED AS THE 'CLIENT' ON THIS PLAN.
 NAXOS ENGINEERS PTY LTD ACCEPTS NO RESPONSIBILITY FOR ANY LOSS OR DAMAGE SUFFERED HOWEVER SO ARISING TO ANY PERSON OR CORPORATION WHO MAY USE OR RELY ON THIS PLAN IN CONTRAVENTION OF THE TERMS OF THIS CLAUSE. ALL COPIES OF THIS PLAN MUST INCLUDE THIS DISCLAIMER.

IMAGERY, CADASTRAL AND SURVEY DATA DISCLAIMER:
 WHILE EVERY CARE IS TAKEN BY NAXOS ENGINEERS PTY LTD TO ENSURE THE ACCURACY OF THE DATA SUPPLIED BY LOCAL AUTHORITIES, DIAL BEFORE YOU DIG (DBYD) RECORDS, AS CONSTRUCTED INFORMATION AND DETAILED SURVEY, WE MAKE NO REPRESENTATIONS OR WARRANTIES ABOUT ITS ACCURACY, RELIABILITY, COMPLETENESS, OR SUITABILITY FOR ANY PARTICULAR PURPOSE AND DISCLAIM ALL RESPONSIBILITY AND ALL LIABILITY (INCLUDING WITHOUT LIMITATION, LIABILITY IN NEGLIGENCE) FOR ALL EXPENSES, LOSSES, DAMAGES (INCLUDING INDIRECT OR CONSEQUENTIAL DAMAGE) AND COSTS WHICH MAY BE INCURRED AS A RESULT OF DATA BEING INACCURATE OR INCOMPLETE IN ANY WAY AND FOR ANY REASON.

Q50 (2%AEP) - FLOOD DEPTH

North:	Size of Land: 9853m ²	Client: ROOFBROOK PTY LTD	Job No: 25-136	Revision: A
Scale: N.T.S.	Project: PROPOSED DEVELOPMENT AT 290 FREEMAN ROAD, INALA 4077	Drawing No: SK001		

BCC DS
RECEIVED
 03/10/2025
APPLICATION REF
 A006548499



CONSULTANT : NAXOS ENGINEERS
 DISCIPLINE : CIVIL DIVISION
 CONTACT : JACK BAILLIE
 TELEPHONE : 1300 598 544
 EMAIL : jack@naxosengineers.com.au

INFORMATION ONLY

NAXOS
 ENGINEERS
 T 1300 598 544
 E info@naxosengineers.com.au
 Level 1, Suite B
 557 Gregory Terrace, Fortitude Valley, Qld 4006
 PO Box 224, Spring Hill QLD 4004
 NAXOSENGINEERS.COM.AU

AMENDMENTS			
No.	DATE	DESCRIPTION	DRAWN
A	30.06.2025	ISSUE FOR HYDRAULIC REPORT	JB

Associated Consultant: ROOFBROOK PTY LTD	
Approved: GREGG TYQUIN	Drawn: JB Design: JB
RPEQ: 1528	Checked: GT Supervisor: GF

DISCLAIMER NOTE:
 THIS PLAN WAS PREPARED FOR DISCUSSION AND ESTIMATING PURPOSES. THE LAYOUT SHOWN IS INDICATIVE ONLY AND MAY BE SUBJECT TO LOCAL AUTHORITY / GOVERNMENT REQUIREMENTS AND FURTHER DETAILED ENGINEERING DESIGN.
 THIS PLAN SHALL NOT BE USED FOR CONSTRUCTION PURPOSES AND IS NOT TO BE USED FOR ANY OTHER PURPOSE OR BY ANY OTHER PERSON OR CORPORATION OTHER THAN LISTED AS THE 'CLIENT' ON THIS PLAN.
 NAXOS ENGINEERS PTY LTD ACCEPTS NO RESPONSIBILITY FOR ANY LOSS OR DAMAGE SUFFERED HOWEVER SO ARISING TO ANY PERSON OR CORPORATION WHO MAY USE OR RELY ON THIS PLAN IN CONTRAVENTION OF THE TERMS OF THIS CLAUSE. ALL COPIES OF THIS PLAN MUST INCLUDE THIS DISCLAIMER.

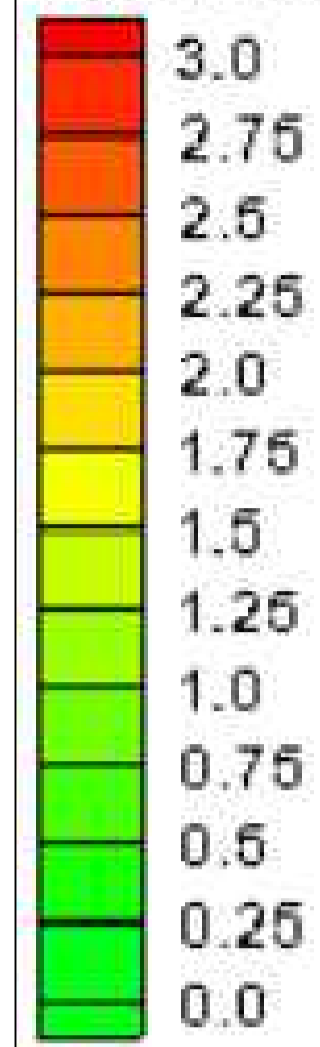
IMAGERY, CADASTRAL AND SURVEY DATA DISCLAIMER:
 WHILE EVERY CARE IS TAKEN BY NAXOS ENGINEERS PTY LTD TO ENSURE THE ACCURACY OF THE DATA SUPPLIED BY LOCAL AUTHORITIES, DIAL BEFORE YOU DIG (DBYD) RECORDS, AS CONSTRUCTED INFORMATION AND DETAILED SURVEY, WE MAKE NO REPRESENTATIONS OR WARRANTIES ABOUT ITS ACCURACY, RELIABILITY, COMPLETENESS OR SUITABILITY FOR ANY PARTICULAR PURPOSE AND DISCLAIM ALL RESPONSIBILITY AND ALL LIABILITY (INCLUDING, WITHOUT LIMITATION, LIABILITY IN NEGLIGENCE) FOR ALL EXPENSES, LOSSES, DAMAGES (INCLUDING INDIRECT OR CONSEQUENTIAL DAMAGE) AND COSTS WHICH MAY BE INCURRED AS A RESULT OF DATA BEING INACCURATE OR INCOMPLETE IN ANY WAY AND FOR ANY REASON.

North:	Size of Land: 9853m ²	Client: ROOFBROOK PTY LTD
Scale: N.T.S.	Project: PROPOSED DEVELOPMENT AT 290 FREEMAN ROAD, INALA 4077	Job No. 25-136
Orig. Dwg. Size A1		Drawing No. SK002

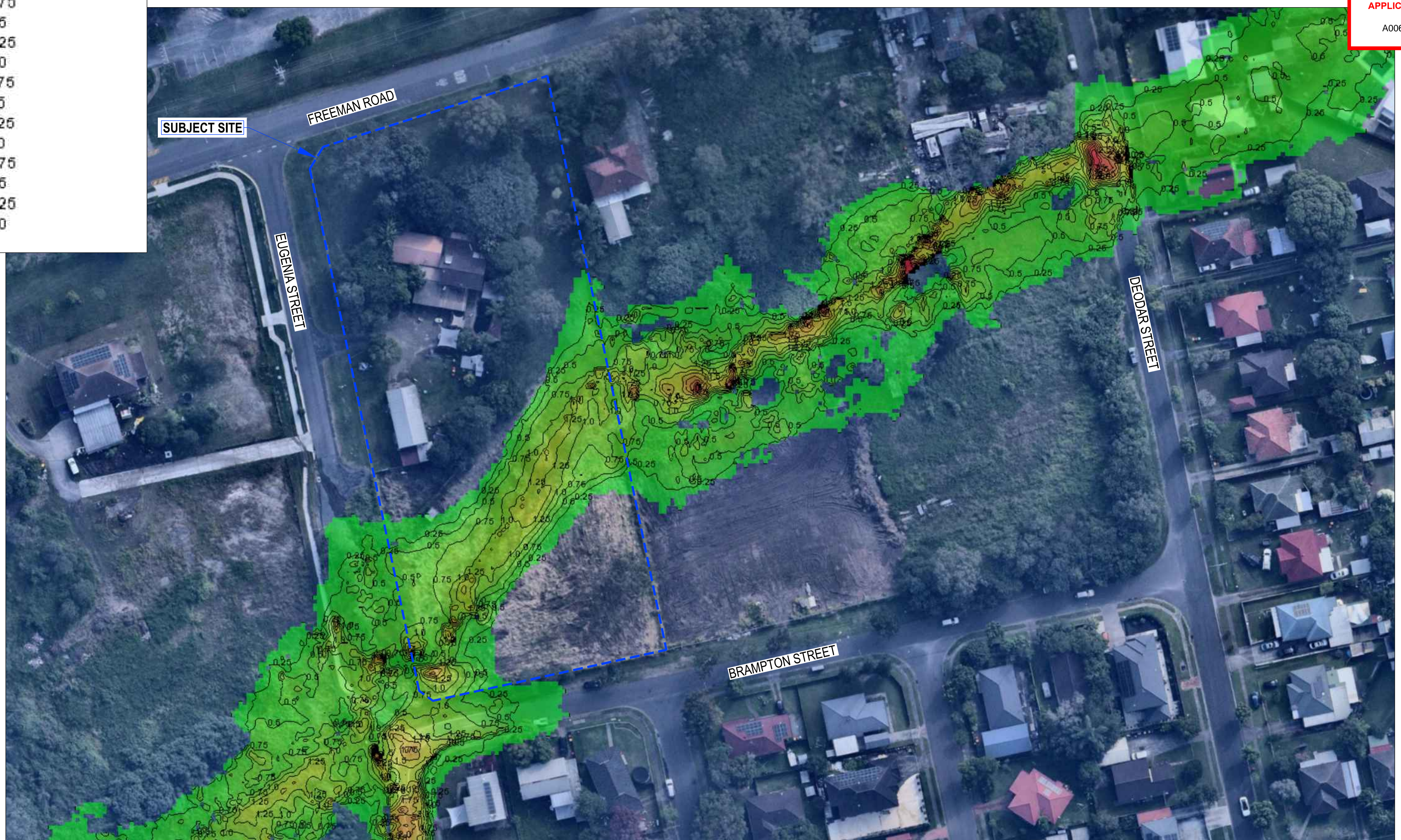
Q50 (2%AEP) - FLOOD WATER LEVEL

Revision: **A**

Mesh Module Velocity



BCC DS
RECEIVED
 03/10/2025
APPLICATION REF
 A006548499



CONSULTANT : NAXOS ENGINEERS
 DISCIPLINE : CIVIL DIVISION
 CONTACT : JACK BAILLIE
 TELEPHONE : 1300 598 544
 EMAIL : jack@naxosengineers.com.au

INFORMATION ONLY

NAXOS ENGINEERS
 T 1300 598 544
 E info@naxosengineers.com.au
 Level 1, Suite B
 557 Gregory Terrace, Fortitude Valley, Qld 4006
 PO Box 224, Spring Hill QLD 4004
 NAXOSENGINEERS.COM.AU

AMENDMENTS			
No.	DATE	DESCRIPTION	DRAWN
A	30.06.2025	ISSUE FOR HYDRAULIC REPORT	JB

Associated Consultant:
 ROOFBROOK PTY LTD

Approved: GREGG TYQUIN	Drawn: JB	Design: JB
Checked: GT	Supervisor: GF	

RPEQ. 1528 Date: .

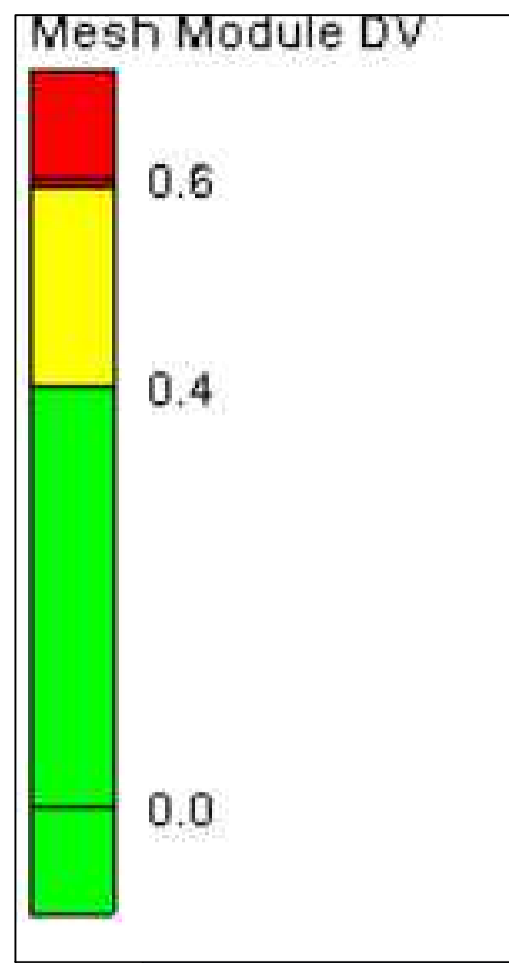
DISCLAIMER NOTE:
 THIS PLAN WAS PREPARED FOR DISCUSSION AND ESTIMATING PURPOSES. THE LAYOUT SHOWN IS INDICATIVE ONLY AND MAY BE SUBJECT TO LOCAL AUTHORITY / GOVERNMENT REQUIREMENTS AND FURTHER DETAILED ENGINEERING DESIGN.
 THIS PLAN SHALL NOT BE USED FOR CONSTRUCTION PURPOSES AND IS NOT TO BE USED FOR ANY OTHER PURPOSE OR BY ANY OTHER PERSON OR CORPORATION OTHER THAN LISTED AS THE 'CLIENT' ON THIS PLAN.
 NAXOS ENGINEERS PTY LTD ACCEPTS NO RESPONSIBILITY FOR ANY LOSS OR DAMAGE SUFFERED HOWEVER SO ARISING TO ANY PERSON OR CORPORATION WHO MAY USE OR RELY ON THIS PLAN IN CONTRAVENTION OF THE TERMS OF THIS CLAUSE. ALL COPIES OF THIS PLAN MUST INCLUDE THIS DISCLAIMER.

IMAGERY, CADASTRAL AND SURVEY DATA DISCLAIMER:
 WHILE EVERY CARE IS TAKEN BY NAXOS ENGINEERS PTY LTD TO ENSURE THE ACCURACY OF THE DATA SUPPLIED BY LOCAL AUTHORITIES, DIAL BEFORE YOU DIG (DBYD) RECORDS, AS CONSTRUCTED INFORMATION AND DETAILED SURVEY, WE MAKE NO REPRESENTATIONS OR WARRANTIES ABOUT ITS ACCURACY, RELIABILITY, COMPLETENESS OR SUITABILITY FOR ANY PARTICULAR PURPOSE AND DISCLAIM ALL RESPONSIBILITY AND ALL LIABILITY (INCLUDING, WITHOUT LIMITATION, LIABILITY IN NEGLIGENCE) FOR ALL EXPENSES, LOSSES, DAMAGES (INCLUDING INDIRECT OR CONSEQUENTIAL DAMAGE) AND COSTS WHICH MAY BE INCURRED AS A RESULT OF DATA BEING INACCURATE OR INCOMPLETE IN ANY WAY AND FOR ANY REASON.

North:	Size of Land: 9853m ²	Client: ROOFBROOK PTY LTD	Job No: 25-136	Revision: A
Scale: N.T.S.	Project: PROPOSED DEVELOPMENT AT 290 FREEMAN ROAD, INALA 4077	Drawing No: SK003		

Q50 (2%AEP) - FLOOD VELOCITY

BCC DS
RECEIVED
 03/10/2025
APPLICATION REF
 A006548499



CONSULTANT : NAXOS ENGINEERS
 DISCIPLINE : CIVIL DIVISION
 CONTACT : JACK BAILLIE
 TELEPHONE : 1300 598 544
 EMAIL : jack@naxosengineers.com.au

INFORMATION ONLY

NAXOS
 ENGINEERS
 T 1300 598 544
 E info@naxosengineers.com.au
 Level 1, Suite B
 557 Gregory Terrace, Fortitude Valley, Qld 4006
 PO Box 224, Spring Hill QLD 4004
 NAXOSENGINEERS.COM.AU

AMENDMENTS			
No.	DATE	DESCRIPTION	DRAWN
A	30.06.2025	ISSUE FOR HYDRAULIC REPORT	JB

Associated Consultant:
 ROOFBROOK PTY LTD

Approved: GREGG TYQUIN	Drawn: JB	Design: JB
RPEQ: 1528	Checked: GT	Supervisor: GF

DISCLAIMER NOTE:
 THIS PLAN WAS PREPARED FOR DISCUSSION AND ESTIMATING PURPOSES. THE LAYOUT SHOWN IS INDICATIVE ONLY AND MAY BE SUBJECT TO LOCAL AUTHORITY / GOVERNMENT REQUIREMENTS AND FURTHER DETAILED ENGINEERING DESIGN.
 THIS PLAN SHALL NOT BE USED FOR CONSTRUCTION PURPOSES AND IS NOT TO BE USED FOR ANY OTHER PURPOSE OR BY ANY OTHER PERSON OR CORPORATION OTHER THAN LISTED AS THE 'CLIENT' ON THIS PLAN.
 NAXOS ENGINEERS PTY. LTD. ACCEPTS NO RESPONSIBILITY FOR ANY LOSS OR DAMAGE SUFFERED HOWEVER SO ARISING TO ANY PERSON OR CORPORATION WHO MAY USE OR RELY ON THIS PLAN IN CONTRAVENTION OF THE TERMS OF THIS CLAUSE. ALL COPIES OF THIS PLAN MUST INCLUDE THIS DISCLAIMER.

IMAGERY, CADASTRAL AND SURVEY DATA DISCLAIMER:
 WHILE EVERY CARE IS TAKEN BY NAXOS ENGINEERS PTY LTD TO ENSURE THE ACCURACY OF THE DATA SUPPLIED BY LOCAL AUTHORITIES, DIAL BEFORE YOU DIG (DBYD) RECORDS, AS CONSTRUCTED INFORMATION AND DETAILED SURVEY, WE MAKE NO REPRESENTATIONS OR WARRANTIES ABOUT ITS ACCURACY, RELIABILITY, COMPLETENESS OR SUITABILITY FOR ANY PARTICULAR PURPOSE AND DISCLAIM ALL RESPONSIBILITY AND ALL LIABILITY (INCLUDING WITHOUT LIMITATION, LIABILITY IN NEGLIGENCE) FOR ALL EXPENSES, LOSSES, DAMAGES (INCLUDING INDIRECT OR CONSEQUENTIAL DAMAGE) AND COSTS WHICH MAY BE INCURRED AS A RESULT OF DATA BEING INACCURATE OR INCOMPLETE IN ANY WAY AND FOR ANY REASON.

Q50 (2%AEP) - FLOOD DEPTH VELOCITY PRODUCT

North:	Size of Land: 9853m ²	Client: ROOFBROOK PTY LTD	Job No.: 25-136	Revision: A
Scale: N.T.S.	Project: PROPOSED DEVELOPMENT AT 290 FREEMAN ROAD, INALA 4077	Drawing No.: SK004		