

**BCC DS**  
**RECEIVED**  
02-FEB-2026  
**APPLICATION REF**  
A006953347



Proposed Extended Hours of Operation  
364 New Cleveland Road  
Tingalpa

ACOUSTIC REPORT



**Client:**  
Crafty Monk Brewing Pty Ltd  
*ATTN: Nathan Walters*

Reference:  
*2025522 R01C 364 New Cleveland Road Tingalpa ENV.docx*

**Date Issued:**  
18 December 2025

**Document Information**

**Contact Details**

Acoustic Works

Unit 17/10 Benson Street,  
Toowong QLD 4066  
(07) 3393 2222  
ABN: 56 157 965 056

PO Box 69  
Toowong DC  
QLD 4066

Greg Pearce  
Email: gpearce@acousticworks.com.au

Mark Enersen  
Email: menersen@acousticworks.com.au

**Report Register**

<b>Date</b>	<b>Revision</b>	<b>Author</b>	<b>Reviewer</b>	<b>Manager</b>
16/12/25	R01A	David Dadd	Greg Pearce	GP
18/12/25	R01B	David Dadd	Greg Pearce	GP
18/12/25	R01C	David Dadd	Greg Pearce	GP

**Disclaimer**

Reports produced by Acoustic Works are prepared for a particular Client’s objective and are based on a specific scope, conditions and limitations, as agreed between Acoustic Works and the Client. Under no circumstances shall information and/or report(s) prepared by Acoustic Works be used by other parties other than the Client without first obtaining written permission from Acoustic Works.

**TABLE OF CONTENTS**

**1.Introduction ..... 4**

**2.Site Description ..... 4**

    2.1 Site Location ..... 4

    2.2 Proposal ..... 5

    2.3 Acoustic Environment ..... 5

**3.Equipment ..... 5**

**4.Receivers and Monitoring ..... 6**

    4.1 Receiver Locations..... 6

    4.2 Unattended Noise Monitoring ..... 7

    4.3 Attended Noise Monitoring ..... 7

**5.Measured Ambient Noise Levels ..... 8**

    5.1 Meteorological conditions ..... 8

    5.2 Unattended Noise Monitor ..... 8

    5.3 Attended Noise Monitoring ..... 9

**6.Noise Criteria ..... 10**

    6.1 BCC - Environmental Noise Criteria ..... 10

        6.1.1 Onsite Activities ..... 10

        6.1.2 Mechanical Plant ..... 11

**7.Environmental Assessment ..... 12**

    7.1 Onsite Activities..... 12

        7.1.1 Intrusive Noise and Acoustic Amenity..... 12

        7.1.2 Night Time L<sub>Amax</sub> Criteria ..... **Error! Bookmark not defined.**

        7.1.3 Low Frequency Noise..... 12

**8.Recommendations ..... 13**

    8.1 Onsite Activities..... 13

**9.Conclusion ..... 13**

**10. Appendices ..... 14**

    10.1 Development Plans..... 14

    10.2 Noise Monitoring Charts ..... 17

**TABLE INDEX**

*Table 1: Meteorological Conditions - Brisbane..... 8*

*Table 2: Measured Ambient Noise Levels - All Time Periods..... 8*

*Table 3: Attended Measurements – 12 December 2025..... 9*

*Table 4: Noise (Planning) Criteria ..... 10*

*Table 5: Intrusive Noise Criteria ..... 10*

*Table 6: Night-time Noise Criteria..... 10*

*Table 7: Applicable Night-time Noise Criteria ..... 11*

*Table 8: Low Frequency Noise Criteria ..... 11*

*Table 9: Applicable Noise Criteria..... 11*

*Table 10: Average Noise Levels from Site Activities, All Time Periods ..... 12*

*Table 11: Night Time L<sub>Amax</sub> ..... **Error! Bookmark not defined.***

*Table 12: Average Low Frequency Noise Levels from Amplified/Background Music, All Time Periods. 12*

**FIGURE INDEX**

*Figure 1: Site Location (Not to Scale)..... 4*

*Figure 2: Receivers and Noise Monitoring Location ..... 6*

## 1. Introduction

This report is in response to a request by Crafty Monk Brewing Pty Ltd for an environmental noise assessment for proposed extended hours application for the approved food and drink outlet located at 364 New Cleveland Road, Tingalpa. This updated assessment supersedes the previous acoustic report (Acoustic Works reference 2023127 R01C 364 New Cleveland Road Tingalpa ENV, dated 29 September 2023) and reflects the newly proposed operating hours.

To facilitate the assessment, attended noise measurements were taken at the venue and at the nearest affected premises. Unattended noise monitoring from the previous assessment was also utilised to determine compliance of onsite activities to sensitive receivers. Based on the outcomes of the assessment, recommendations for management strategies are specified.

## 2. Site Description

### 2.1 Site Location

The proposed site is described by the following:

364 New Cleveland Road, Tingalpa  
Lot 1 on RP67975

Refer to Figure 1 for site location.

Figure 1: Site Location (Not to Scale)



A comprehensive site survey has been conducted on and identified the following:

- a) The site is currently vacant and is zoned II Industry Investigation, as defined in the Brisbane City Council City Plan 2014.
- b) The surrounding area consists of industrial and residential land uses.
- c) The approved Food and Drink outlet is located in excess of 100 metres from the nearest residential dwelling located across New Cleveland Road to the west and south.

## 2.2 Proposal

The proposal is to extend the operating hours of the approved food and drink outlet as follows:

- Approved Hours:
  - 6am to 9pm, 7 days a week.
- Proposed Hours:
  - 6am to 12am, 7 days a week.

Refer to the Appendices for development plans.

## 2.3 Acoustic Environment

The surrounding area is primarily affected by noise from the surrounding road network and nearby industrial premises.

## 3. Equipment

The following equipment was used to facilitate the ambient noise monitoring:

- Rion NL42 environmental noise monitor
- Norsonic Nor140 sound level meter
- BSWA Technology Co. Ltd sound calibrator

The environmental noise monitor, sound level meter and calibrator hold current NATA Laboratory Certification with the logger field calibrated before and after the monitoring period, no significant drift from the reference signal was recorded.

## 4. Receivers and Monitoring

### 4.1 Receiver Locations

The nearest sensitive receiver locations were identified as follows:

- 1. Single storey residential dwellings are located to the west at 2-6 Sulu Court. Receiver is screened by an existing 2.2m acoustic barrier.
- 2. Single storey residential dwellings are located to the west at 10-15 Molucca Place. Receiver is screened by an existing 2.2m acoustic barrier.
- 3. Single and two storey residential dwellings are located to the south at 88-92 Brokenwood Circuit and 6 Gumtree Court.

Refer to Figure 2 for these locations.

Figure 2: Receivers and Noise Monitoring Location



## 4.2 Unattended Noise Monitoring

The Rion NL42 environmental noise monitor was placed at 2 Sulu Court to measure ambient noise levels. This location was chosen as it was considered representative of the nearest sensitive receivers. The monitor was located in a free field position with the microphone approximately 1.4 metres above ground surface level. The environmental noise monitor recorded noise levels between the 18<sup>th</sup> and 24<sup>th</sup> of November 2020.

The environmental noise monitor was set to record noise levels in "A" weighting, fast response using 15 minute statistical intervals. Ambient noise monitoring was conducted generally in accordance with Australian Standard AS1055:2018 *Acoustics – Description and measurement of environmental noise*.

Refer to Figure 2 for the noise monitoring location.

## 4.3 Attended Noise Monitoring

Noise levels from the existing premises were measured on Friday the 12<sup>th</sup> of December 2025, between 2pm and 3pm which was representative of their peak operating period to prove a worst case scenario. At the time of the attended measurements, patron activities were occurring both inside and external to the venue.

## 5. Measured Ambient Noise Levels

The following tables present the measured ambient noise levels from the unattended and attended noise survey. Any periods of inclement weather or extraneous noise were omitted from the measured data prior to determining the results.

### 5.1 Meteorological conditions

Meteorological observations during the unattended noise monitoring survey were obtained from the Bureau of Meteorology website (<http://www.bom.gov.au/climate/data>), shown in Table 1 below.

Table 1: Meteorological Conditions - Brisbane

Day	Date	Rainfall (mm)	Wind			
			9am		3pm	
			Speed (km/h)	Direction	Speed (km/h)	Direction
Wednesday	18/11/20	0.8	15	SE	15	E
Thursday	19/11/20	0	13	E	15	E
Friday	20/11/20	0	6	ENE	7	NE
Saturday	21/11/20	0	4	W	11	ENE
Sunday	22/11/20	0	4	ENE	11	NE
Monday	23/11/20	0	6	NE	11	NE
Tuesday	24/11/20	0	4	S	19	ENE

### 5.2 Unattended Noise Monitor

The following table presents the measured ambient noise levels from the unattended noise survey. Any periods of inclement weather or extraneous noise are omitted from the measured data prior to determining the results.

Table 2: Measured Ambient Noise Levels - All Time Periods

Day	Date	L <sub>Aeq,9h night</sub> dB(A)	RBL dB(A) L <sub>90</sub>		
			Day	Evening	Night
Wednesday	18/11/20	-	-	35.2	31.0
Thursday	19/11/20	45.6	39.4	32.4	29.9
Friday	20/11/20	47.6	39.8	39.2	29.3
Saturday	21/11/20	44.8	37.2	34.2	32.8
Sunday	22/11/20	44.8	36.8	35.6	28.6
Monday	23/11/20	45.2	41.9	40.8	33.6
Tuesday	24/11/20	-	38.2	-	-
Overall value		46	39	36	31

Refer to the appendix for graphical representation.

### 5.3 Attended Noise Monitoring

Table 3 summarises the onsite activity noise levels measured during the attended noise monitoring. At the time of monitoring, a total of 55 patrons were present, comprising of 42 patrons indoors and 13 patrons utilising the outdoor area. The venue was not operating at full capacity during the monitoring period therefore, a correction of +3dB was applied to the measured data to assume double the observed patron numbers/onsite activity, representing the worst-case scenario.

No amplified music was occurring during the measurement period with recorded noise levels reflecting general patron and operational activity associated with the premises. With respect to onsite music, a maximum noise level was adopted for the assessment.

Onsite activity noise measured at the venue was corrected to a distance of 1 metre for analysis purposes as presented in Table 3 below.

Table 3: Attended Measurements – 12 December 2025

Attended Noise Monitoring Location	Summary of Onsite Activities Measured	Measurement Distance from Source (m)	Measured Onsite Activity Noise Level (dBA)			Onsite Activity Noise Level Corrected to 1 Meter (dBA) and +3dB Correction for Double the Activity			Comments
			LAeq	LCeq	LAmaz	LAeq	LCeq	LAmaz	
At entrance with venue doors open (indoor activity)	Patron dining, conversation and bar service	2m	69	74	84	78	83	93	Clearly audible
At outdoor dining area (outdoor activity)	Patron dining, conversation and outdoor pizza oven activity	1.5m	70	75	81	76	81	87	Clearly audible
At nearest receiver boundary with venue doors open	Patron dining, conversation (indoors and outdoors), bar service, and outdoor pizza oven activity	91m	60	74	66	n/a	n/a	n/a	Onsite activities inaudible

## 6. Noise Criteria

### 6.1 BCC - Environmental Noise Criteria

To ensure a reasonable acoustic amenity is maintained, Brisbane City Council requires environmental noise be assessed in accordance with Noise Impact Assessment PSP (2014). To accurately assess environmental noise, the noise must first be classified as to the type and its duration. Section 6.1.1 and 6.1.2 breaks down the assessment requirements in relation to the project and considers the criteria in relation to the type of noise being assessed.

#### 6.1.1 Onsite Activities

To ensure a reasonable amenity is maintained, the following criteria shall be applied for the assessment of onsite activities to surrounding sensitive receivers. The noise criteria as applied by Brisbane City Council in accordance with the Brisbane City Plan 2014 are as follows:

Table 4: Noise (Planning) Criteria

Criteria Location	Intrusive Noise Criteria	Acoustic Amenity Criteria		
	Day, evening and night $L_{Aeq,adj,T}$ are not greater than the RBL plus the value in this column for the relevant criteria location, where T equals: <ul style="list-style-type: none"> <li>• Day - 11hr</li> <li>• Evening - 4hr</li> <li>• Night - 9hr</li> </ul>	Day, evening and night $L_{Aeq,adj,T}$ are not greater than the values in the column below for the relevant criteria location, where T equals: <ul style="list-style-type: none"> <li>• Day - 11hr</li> <li>• Evening - 4hr</li> <li>• Night - 9hr</li> </ul>		
		Day	Evening	Night
Low density residential zones	3 dB(A)	55 dB(A)	45 dB(A)	40 dB(A)

The noise criteria applicable to this development are as follows:

Table 5: Intrusive Noise Criteria

Time Period	Receivers 1-3
	Intrusive Criteria dB(A) (RBL $L_{90}$ + 3 dB(A))
Day 7am – 6pm	42
Evening 6pm – 10pm	39
Night 10pm – 7am	34

The night time noise criteria as applied by Brisbane City Council in accordance the Brisbane City Plan 2014 are as follows:

Table 6: Night-time Noise Criteria

Criteria Location	Where the existing $L_{Aeq,9hr\ night}$ at the criteria location is:	Average of the highest 15 single $L_{Amax}$ events over a given night (10pm-7pm) period is not greater than the following values at the relevant criteria location	The absolute highest single $L_{Amax}$ event over a given night (10pm-7am) period is not greater than the following values at the relevant criteria location
Low density residential zone boundary	< 45dB(A)	50dB(A)	55dB(A)
	45 to 60dB(A)	$L_{eq,9hr\ night} + 5dB(A)$	$L_{eq,9hr\ night} + 10dB(A)$
	> 60dB(A)	65dB(A)	70dB(A)

Based on the measured noise levels in Section 5 the night-time noise criteria applicable to this development is as follows:

Table 7: Applicable Night-time Noise Criteria

Criteria Location	Measured $L_{Aeq,9h\ night}$ dB(A)	Criteria Average $L_{Amax}$ dB(A)	Criteria Highest $L_{Amax}$ dB(A)
Low density residential zone boundary	46	51	56

Table 8: Low Frequency Noise Criteria

Criteria Location	Low Frequency Noise Criteria		
	Day, evening and night $L_{Ceq,adj,T}$ are not greater than the values in the column below for the relevant criteria location, where T equals: <ul style="list-style-type: none"> <li>• Day - 11hr</li> <li>• Evening - 4hr</li> <li>• Night - 9hr</li> </ul>		
	Day	Evening	Night

Low density residential zone boundary	65 dB(C)	65 dB(C)	60 dB(C)
---------------------------------------	----------	----------	----------

### 6.1.2 Mechanical Plant

Development that includes mechanical plant (including air-conditioning plant, heat pumps and swimming pool pumps) ensures it is located, designed and attenuated to achieve the following criteria:

*$L_{Aeq,adj,T}$  emitted from mechanical plant is not greater than the rating background level plus 3 at a sensitive use not associated with the development.*

Where T is:

- (7am to 6pm): 11hr
- (6pm to 10pm): 4hr
- (10pm to 7am): 9hr

Where  $L_{Aeq,adj,T}$  is the A-weighted equivalent continuous sound pressure level during measurement time T, adjusted for tonal and impulsive noise characteristics, determined in accordance with the methodology described in the Noise impact assessment planning scheme policy.

The noise criteria applicable to this development are as follows:

Table 9: Applicable Noise Criteria

Time Period	Criteria dB(A) (RBL $L_{90} + 3$ dB(A))
Day 7am – 6pm	42
Evening 6pm – 10pm	39
Night 10pm – 7am	34

## 7. Environmental Assessment

### 7.1 Onsite Activities

#### 7.1.1 Intrusive Noise, Acoustic Amenity and Night Time LAmax Criteria

The average and maximum noise source levels and predicted impacts at the receiver locations are shown in Table 10 as follows. LAeq results are not shown where the calculated total is less than 0dBA.

Table 10: Average Noise Levels from Site Activities, All Time Periods

Receiver	Receivers																	Intrusive Compliance LAeq			Amenity Compliance LAeq			LAMax Compliance			
	Description	Source @1m dB(A)	Correction dB(A)*	Corrected dB(A)	Number of events day	Number of events eve	Number of events night	Duration per event	Distance (m)	No Barrier (height (m))	Barrier screening dB	Building TL or shield dB	Building screening dB	Dist atten. @-6dB/dd	LAeq adj,T ext. dB(A) Day	LAeq adj,T ext. dB(A) Eve	LAeq adj,T ext. dB(A) Night	Average LAMax dBA	Absolute LAMax dBA	Day	Eve	Night	Day	Eve	Night	Night Average	Night Absolute
																				Day	Eve	Night	Day	Eve	Night	Night Average	Night Absolute
	Criteria																			42	39	34	55	45	40	51	56
1	Indoor activities (excluding music)	78	78	11	4	3	3600	130	2.2	-9			-43	26	26	21	41	44		Yes	Yes	Yes	Yes	Yes	Yes	Yes	Yes
	Background Music	75	75	11	4	3	3600	130	2.2	-9			-43	23	23	18	34	38		Yes	Yes	Yes	Yes	Yes	Yes	Yes	Yes
	Outdoor activities (excluding music)	76	76	11	4	3	3600	130	2.2	-9			-43	24	24	19	35	39		Yes	Yes	Yes	Yes	Yes	Yes	Yes	Yes
	Total													29	29	25	41	44		Yes	Yes	Yes	Yes	Yes	Yes	Yes	Yes
	Criteria																			42	39	34	55	45	40	51	56
2	Indoor activities (excluding music)	78	78	11	4	3	3600	91	2.2	-9			-39	30	30	25	45	48		Yes	Yes	Yes	Yes	Yes	Yes	Yes	Yes
	Background Music	75	75	11	4	3	3600	91	2.2	-9			-39	27	27	22	38	42		Yes	Yes	Yes	Yes	Yes	Yes	Yes	Yes
	Outdoor activities (excluding music)	76	76	11	4	3	3600	91	2.2	-9			-39	28	28	23	39	43		Yes	Yes	Yes	Yes	Yes	Yes	Yes	Yes
	Total													32	32	27	45	48		Yes	Yes	Yes	Yes	Yes	Yes	Yes	Yes
	Criteria																			42	39	34	55	45	50	51	56
3	Indoor activities (excluding music)	78	78	11	4	3	3600	148					-43	35	35	30	50	53		Yes	Yes	Yes	Yes	Yes	Yes	Yes	Yes
	Background Music	75	75	11	4	3	3600	148					-43	32	32	27	43	47		Yes	Yes	Yes	Yes	Yes	Yes	Yes	Yes
	Outdoor activities (excluding music)	76	76	11	4	3	3600	148					-43	33	33	28	44	48		Yes	Yes	Yes	Yes	Yes	Yes	Yes	Yes
	Total													36	36	32	50	53		Yes	Yes	Yes	Yes	Yes	Yes	Yes	Yes

\*Correction due to tonality and impulsiveness as per AS1055:2018.

Compliance is predicted for all onsite activities at the sensitive receiver locations on the condition the recommendations in Section 8 are implemented.

#### 7.1.2 Low Frequency Noise

The noise source levels and predicted impacts at the receiver locations are shown in Table 11. LCEq results are not shown where the calculated total is less than 0dBC.

Table 11: Average Low Frequency Noise Levels from Amplified/Background Music, All Time Periods

Receiver	Receivers																	Low frequency LCEq Compliance			
	Description	Source @1m dB(A)	Correction dB(A)*	Corrected dB(A)	Number of events day	Number of events eve	Number of events night	Duration per event	Distance (m)	No Barrier (height (m))	Barrier screening dB	Building TL or shield dB	Topo screening dB	Dist atten. @-6dB/dd	LAeq adj,T ext. dB(C) Day	LAeq adj,T ext. dB(C) Eve	LAeq adj,T ext. dB(C) Night	Day	Eve	Night	
																		Day	Eve	Night	
	Criteria																		65	65	60
1	Indoor activities (excluding music)	83	83	11	4	3	3600	130	2.2	-9			-43	31	31	26			Yes	Yes	Yes
	Background music	79	79	11	4	3	3600	130	2.2	-9			-43	27	27	22			Yes	Yes	Yes
	Outdoor activities (excluding music)	82	82	11	4	3	3600	130	2.2	-9			-43	30	30	25			Yes	Yes	Yes
	Total													34	34	30			Yes	Yes	Yes
	Criteria																		65	65	60
2	Indoor activities (excluding music)	83	83	11	4	3	3600	91	2.2	-9			-40	34	34	29			Yes	Yes	Yes
	Background music	79	79	11	4	3	3600	91	2.2	-9			-40	30	30	25			Yes	Yes	Yes
	Outdoor activities (excluding music)	82	82	11	4	3	3600	91	2.2	-9			-40	33	33	28			Yes	Yes	Yes
	Total													37	37	33			Yes	Yes	Yes
	Criteria																		65	65	60
3	Indoor activities (excluding music)	83	83	11	4	3	3600	148					-44	39	39	34			Yes	Yes	Yes
	Background music	79	79	11	4	3	3600	148					-43	36	36	31			Yes	Yes	Yes
	Outdoor activities (excluding music)	82	82	11	4	3	3600	148					-43	39	39	34			Yes	Yes	Yes
	Total													43	43	38			Yes	Yes	Yes

\*Correction due to tonality and impulsiveness as per AS1055:2018.

Compliance is predicted for all onsite activities at the sensitive receiver locations on the condition the recommendations in Section 8 are implemented.

## 8. Recommendations

### 8.1 Onsite Activities

Compliance is predicted with Brisbane City Council assessment criteria for the proposed extended hours of operation (6am to 12am) on the condition the following recommendations are implemented:

- Amplified music shall not exceed 75dB(A) when measured outdoors, at a distance of 1 metre from the entrance doors.

## 9. Conclusion

An environmental noise assessment was conducted for the proposed extended hours of operation (6am to 12am) for the approved food and drink outlet at 364 New Cleveland Road, Tingalpa. Based on the results of the assessment, compliance is predicted for the development on the condition the recommendations in Section 8 are implemented.

If you should have any queries, please do not hesitate to contact us.

Report prepared by,

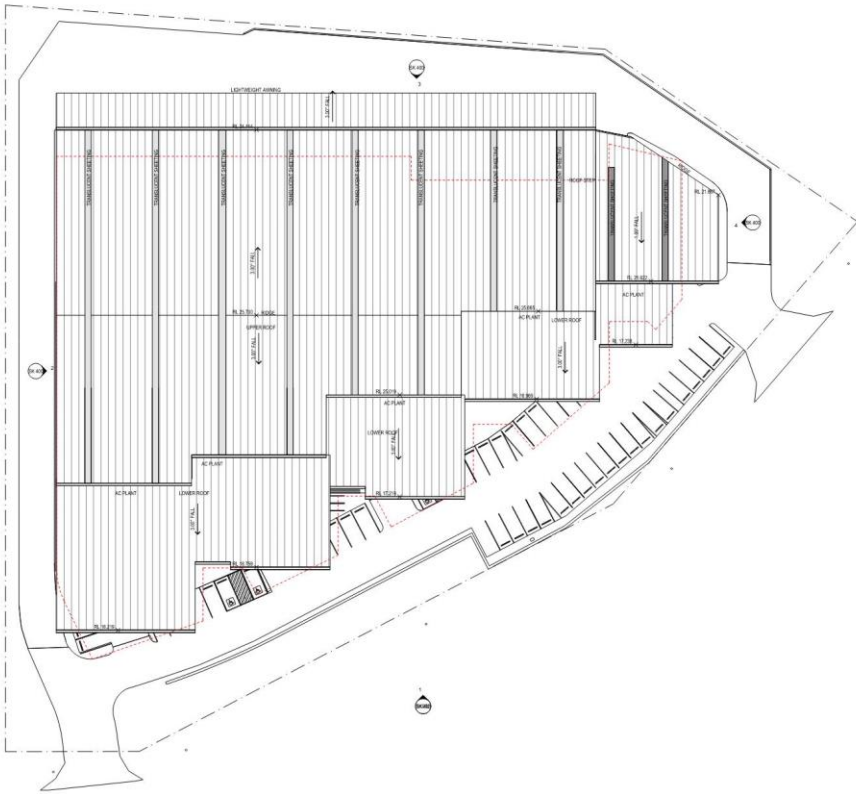


**David Dadd** (B. Applied Sc., MAAS)

Acoustic Consultant

acousticworks)))





**BCC DS**  
**RECEIVED**  
 13/06/2022  
 APPLICATION REF  
 A005973723

**GENERAL NOTES**  
 1. CONFIRM ALL DIMENSIONS AND EXISTING INFRASTRUCTURE ON SITE PRIOR TO CONSTRUCTION  
 2. ALL WORK IS TO COMPLY WITH ALL ASPECTS TO THE RELEVANT AUSTRALIAN BUILDING STANDARDS AND LOCAL COUNCIL LAWS, REGULATIONS AND ORDINANCES (ON DRAWING OR ON SITE) TO BE REPORTED TO CHALMERS PARTNERS PRIOR TO CONSTRUCTION  
 3. FLOORED DIMENSIONS TO BE TAKEN IN PREFERENCE TO SCALED DRAWINGS  
 4. DOCUMENTS TO BE READ IN CONJUNCTION WITH CONSULTANTS AND RELEVANT DOCUMENTATION

**PLANS AND DOCUMENTS**  
 referred to in the **DEVELOPMENT APPROVAL**  
 Issued: 11/02/2022  
 Minor change: 21/06/2022

THIS APPROVAL SHOULD NOT BE TAKEN TO CONSTITUTE PERMISSION TO ENTER RELEVANT PROPERTIES TO CONSTRUCT INCLUDING ASSOCIATED WORKS (SUCH AS DRAINAGE AND EXCAVATION) ANY SUCH TO BOUNDARY WALL OR FENCES. PERMISSION MUST BE OBTAINED FROM RELEVANT PROPERTY OWNERS.

REV	DESCRIPTION	DATE	ISSUED BY

**PROJECT NAME / ADDRESS**  
 A01 INDUSTRIAL PROJECT  
 364 NEW CLEVELAND RD  
 TINGALPA

**CLIENT**  
 NATHAN WALTERS

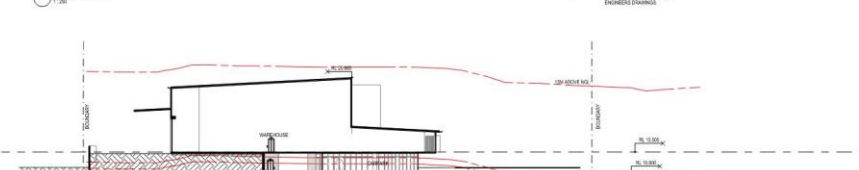
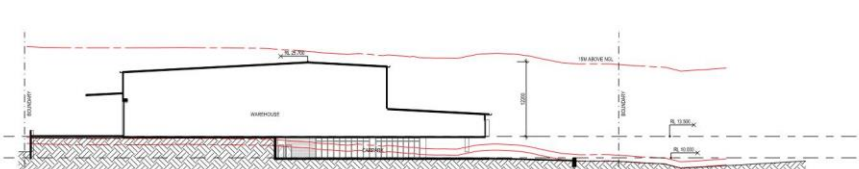
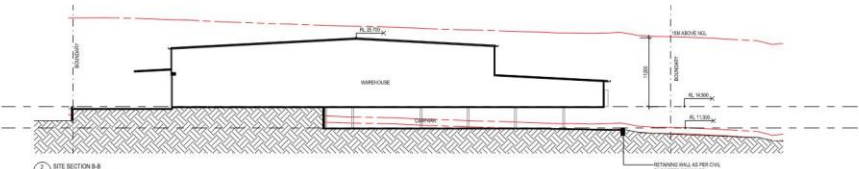
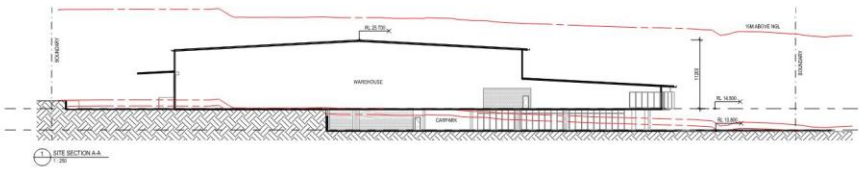
**DRAWING**  
 SITE PLAN - ROOF

PROJECT #	2021190
DATE	08/08/21
SCALE	1:200 (A1)
DRAWN	IC CHD
CHECKED	IC
DRAWING #	SK 107
REVISION	12

Level 2, Suite 2.1, 988 QUEEN ST.  
 BRISBANE



278 NIKKOBASHI HAKODOMIHO, CHUO-KU, TOKYO



**BCC DS**  
**RECEIVED**  
 13/06/2022  
 APPLICATION REF  
 A005973723

**GENERAL NOTES**  
 1. CONFIRM ALL DIMENSIONS AND EXISTING INFRASTRUCTURE ON SITE PRIOR TO CONSTRUCTION  
 2. ALL WORK IS TO COMPLY WITH ALL ASPECTS TO THE RELEVANT AUSTRALIAN BUILDING STANDARDS AND LOCAL COUNCIL LAWS, REGULATIONS AND ORDINANCES (ON DRAWING OR ON SITE) TO BE REPORTED TO CHALMERS PARTNERS PRIOR TO CONSTRUCTION  
 3. FLOORED DIMENSIONS TO BE TAKEN IN PREFERENCE TO SCALED DRAWINGS  
 4. DOCUMENTS TO BE READ IN CONJUNCTION WITH CONSULTANTS AND RELEVANT DOCUMENTATION

**PLANS AND DOCUMENTS**  
 referred to in the **DEVELOPMENT APPROVAL**  
 Issued: 11/02/2022  
 Minor change: 21/06/2022

THIS APPROVAL SHOULD NOT BE TAKEN TO CONSTITUTE PERMISSION TO ENTER RELEVANT PROPERTIES TO CONSTRUCT INCLUDING ASSOCIATED WORKS (SUCH AS DRAINAGE AND EXCAVATION) ANY SUCH TO BOUNDARY WALL OR FENCES. PERMISSION MUST BE OBTAINED FROM RELEVANT PROPERTY OWNERS.

REV	DESCRIPTION	DATE	ISSUED BY

**PROJECT NAME / ADDRESS**  
 A01 INDUSTRIAL PROJECT  
 364 NEW CLEVELAND RD  
 TINGALPA

**CLIENT**  
 NATHAN WALTERS

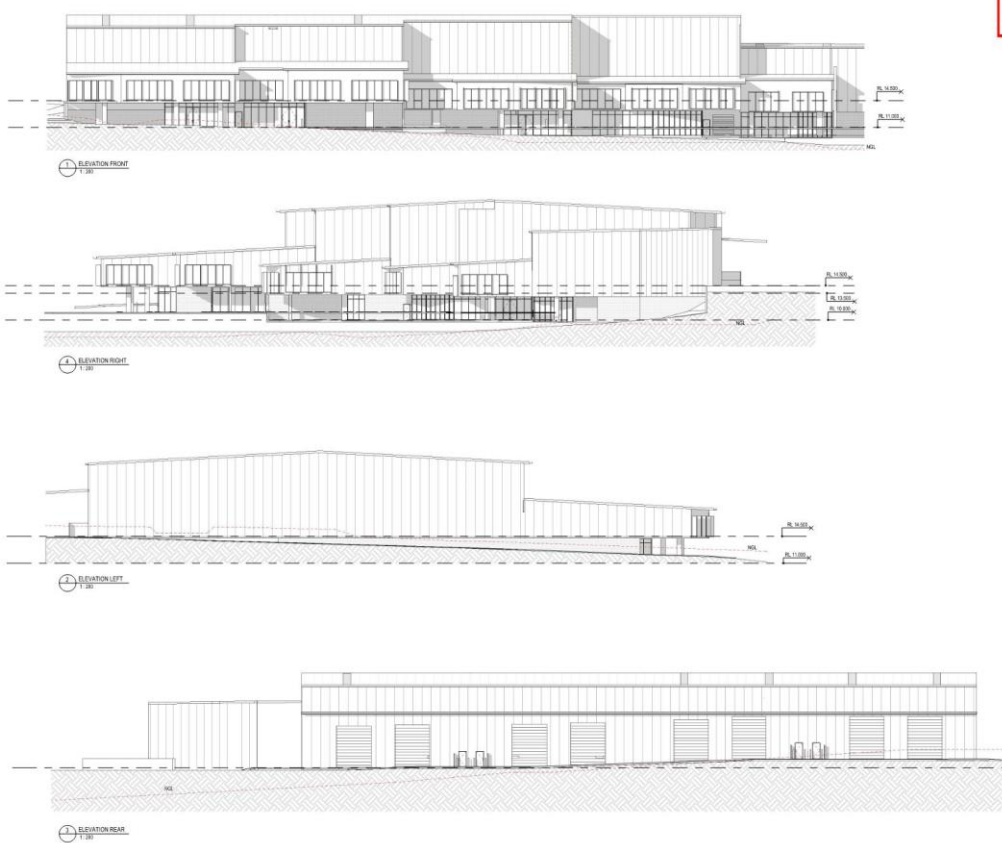
**DRAWING**  
 SITE SECTIONS A, B, C, D

PROJECT #	2021190
DATE	08/08/21
SCALE	1:200 (A1)
DRAWN	IC CHD
CHECKED	IC
DRAWING #	SK 300
REVISION	12

Level 2, Suite 2.1, 988 QUEEN ST.  
 BRISBANE



278 NIKKOBASHI HAKODOMIHO, CHUO-KU, TOKYO



**BCC DS**  
 RECEIVED  
 13/05/2022  
 APPLICATION REF  
 A06973723

- GENERAL NOTES**
1. CONFIRM ALL DIMENSIONS AND EXISTING INFRASTRUCTURE ON SITE PRIOR TO CONSTRUCTION
  2. ALL WORK IS TO COMPLY WITH ALL ASPECTS TO THE RELEVANT AUSTRALIAN BUILDING STANDARDS AND LOCAL COUNCIL LAWS, REGULATIONS AND BY-LAWS
  3. ANY DISCREPANCIES OR CONFLICTS ON SITE TO BE REPORTED TO CHALMERS PARTNERS PRIOR TO CONSTRUCTION
  4. FOULED DIMENSIONS TO BE TAKEN IN PREFERENCE TO SCALED DIMENSIONS
  5. DOCUMENTS TO BE READ IN CONJUNCTION WITH CONSULTANTS AND RELEVANT DOCUMENTATION

**PLANS AND DOCUMENTS**  
 referred to by the  
**DEVELOPMENT APPROVAL**  
 Issued: 11/02/2022  
 Minor change: 21/06/2022

THIS APPROVAL SHOULD NOT BE TAKEN TO CONSTITUTE PERMISSION TO ENTER NEIGHBOURING PROPERTIES TO CONSTRUCT INCLUDING ASSOCIATED WORKS SUCH AS EXCAVATION AND ELEVATION ANY BUILT TO BOUNDARY WALL OR FENCE. PERMISSION MUST BE OBTAINED FROM RELEVANT PROPERTY OWNERS.

REV	DESCRIPTION	DATE	ISSUED BY

**PROJECT NAME / ADDRESS**  
 NOT REGISTERED PROJECT  
 364 NEW CLEVELAND RD  
 TINGALPA

**CLIENT**  
 NATHAN WALTERS

**DRAWING**  
 ELEVATIONS

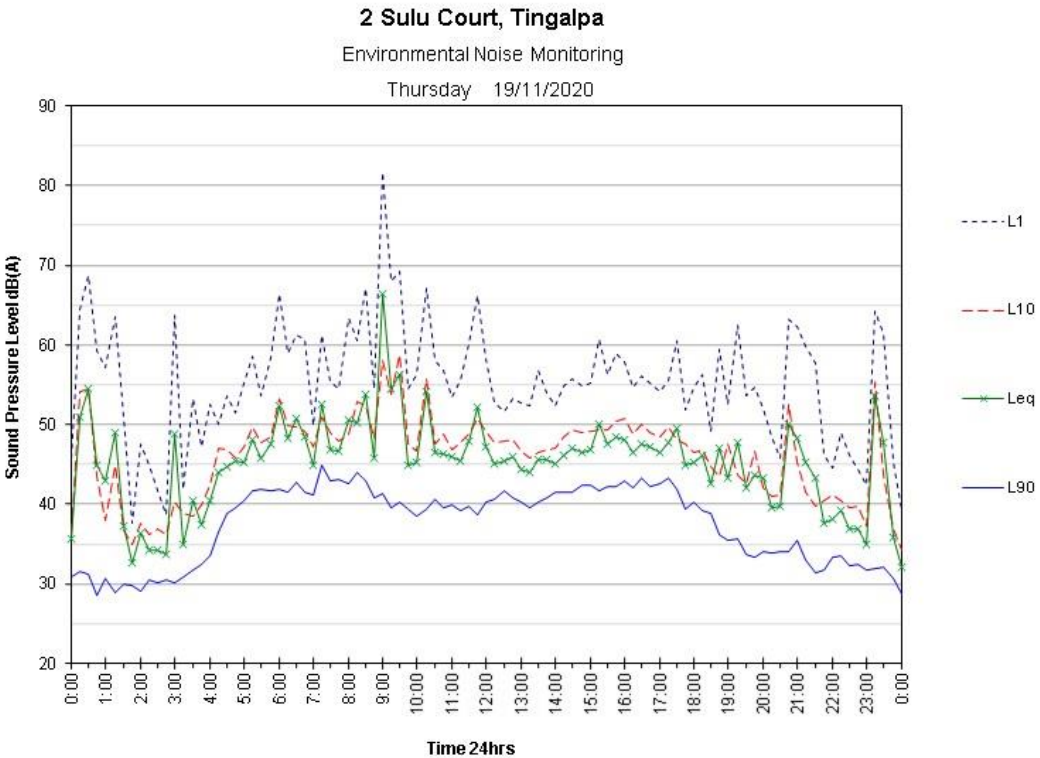
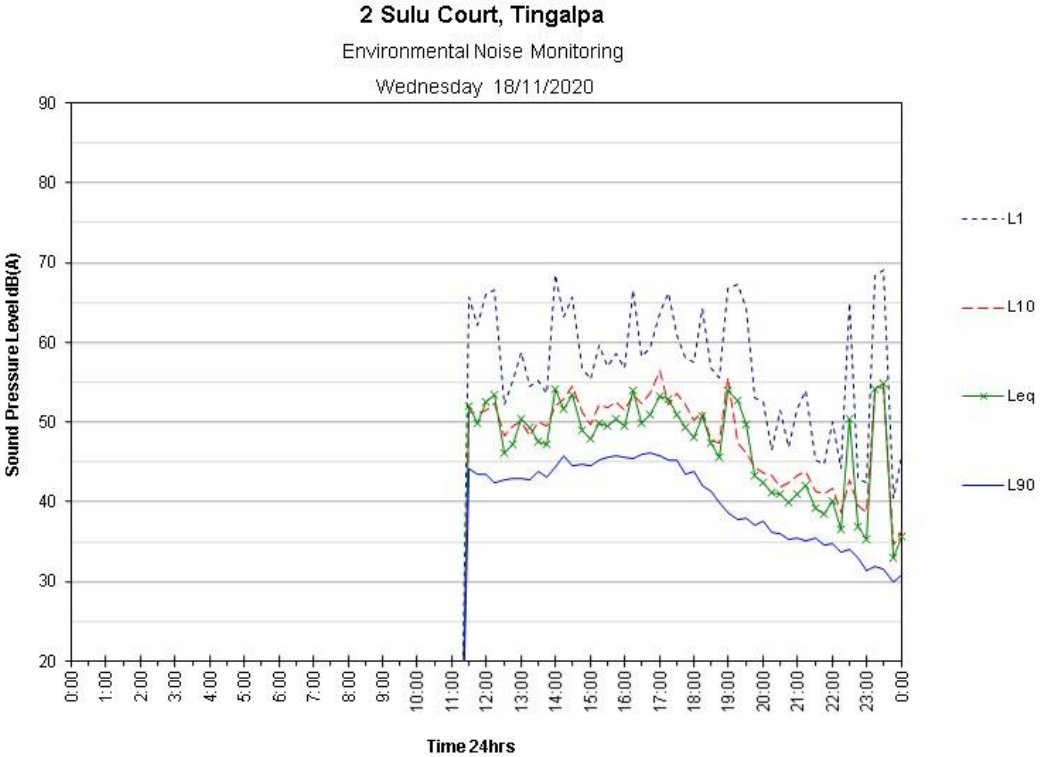
PROJECT #	DATE	
20211452	18.05.22	
SCALE BY	DATE BY	
AS/NA	2022.06.01	
DRAWN	CHK	CC
DRAWING #	REVISION	
SK 400	17	

Level 7, Suite 2.1, 388 Queen St.  
 Brisbane



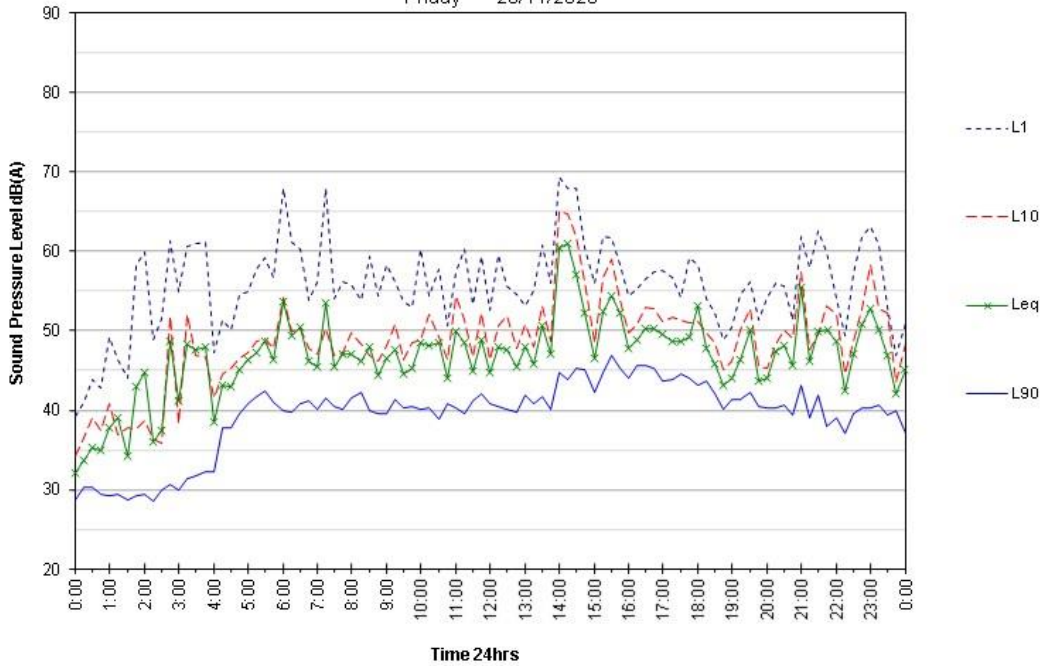
273 NIKOHASHI HIRAKAWACHO,  
 CHUOH-KU, TOKYO

### 10.2 Noise Monitoring Charts



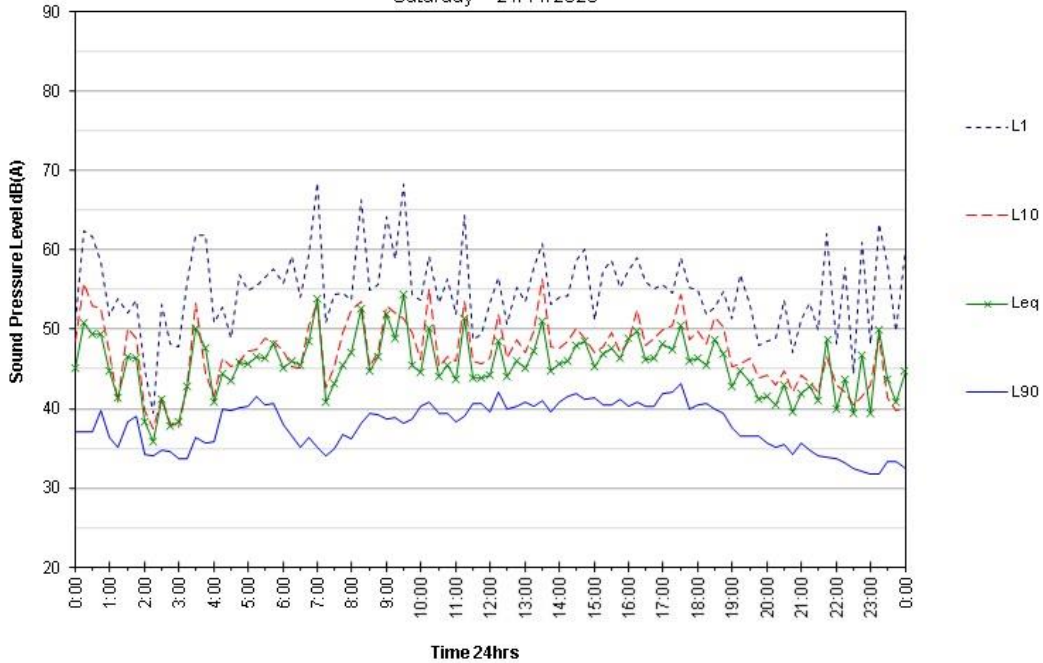
**2 Sulu Court, Tingalpa**  
Environmental Noise Monitoring

Friday 20/11/2020

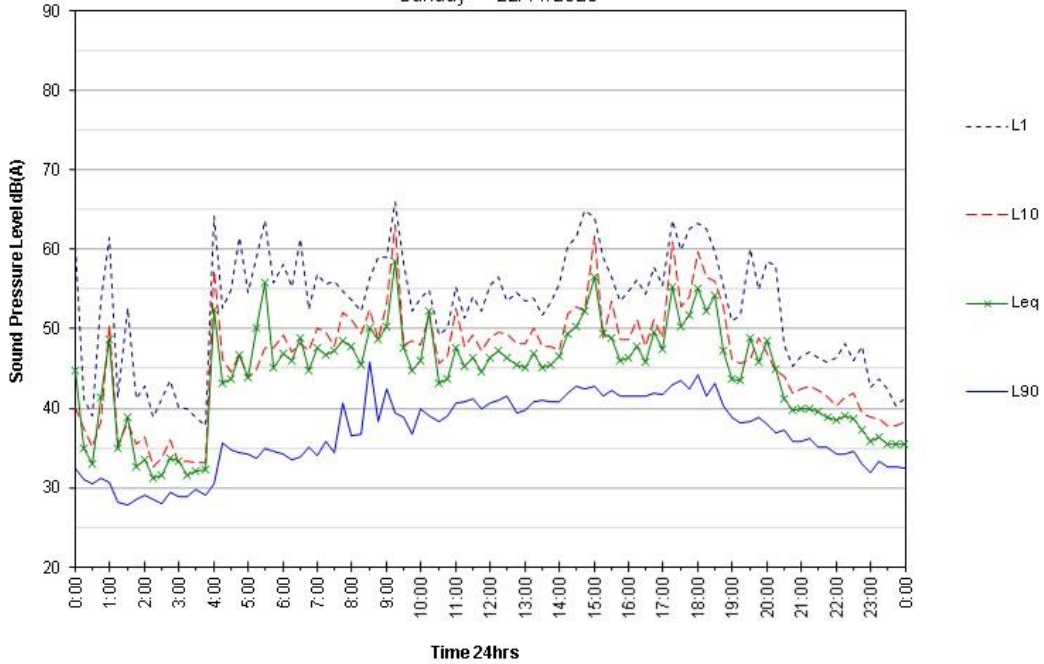


**2 Sulu Court, Tingalpa**  
Environmental Noise Monitoring

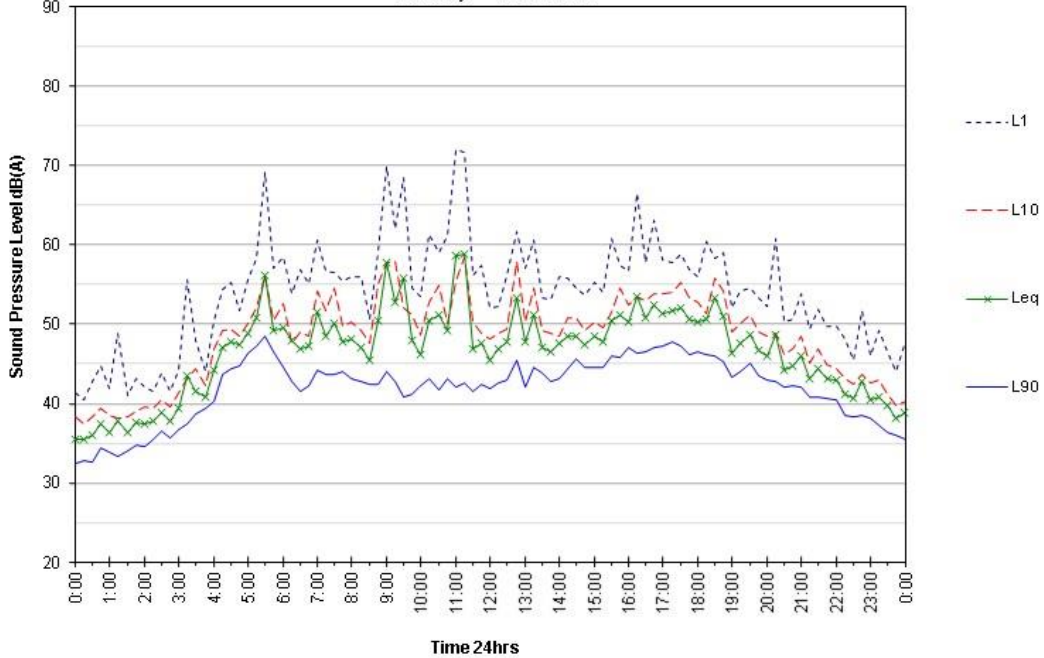
Saturday 21/11/2020



**2 Sulu Court, Tingalpa**  
Environmental Noise Monitoring  
Sunday 22/11/2020



**2 Sulu Court, Tingalpa**  
Environmental Noise Monitoring  
Monday 23/11/2020



**2 Sulu Court, Tingalpa**  
Environmental Noise Monitoring

Tuesday 24/11/2020

