

BCC DS
 RECEIVED
 12/06/2025
 APPLICATION REF
 A006130292



ANDREW GOLD LANDSCAPE ARCHITECTURE
 PO BOX 5220, MT GRAVATT EAST QLD 4122
 T 07 3420 0006 M 0405 389 243 E andrew@agla.com.au

PROPOSED MULTI-UNIT DWELLINGS
 17 REGINA STREET,
 STONES CORNER
 GROUND FLOOR
 LANDSCAPE CONCEPT PLAN



- 1** PROPOSED STREET TREES
 Provide new street trees to the road reserves adjacent to the subject site so as to improve the streetscape amenity including visual and climatic amenity. Proposed species to be as per Table 3.7.5.15.A—General species table for small-medium crown trees, and proposed locations as per 3.7.5.3 Planting locations as per SC6.16 Infrastructure design planning scheme policy - Chapter 3 Road corridor design. (ie: *Buckinghamia celsissima*)
- 2** FEATURE SHADE/ SCREEN TREE
 Medium to large canopied rounded tree species to provide shade over the frontage, provide visual amenity and landscape softening of the proposed dwellings; Refer Proposed Planting Schedule (ie: *Agathis robusta*, *Olea europaea* Tolley's Upright)
- 3** PODIUM SHRUBS AND GROUNDCOVERS
 Mass planting to podium planters to assist in building presentation to the streetscape and to provide visual amenity; Refer Proposed Planting Schedule
- 4** SHRUBS AND GROUNDCOVERS
 Mass planting to large areas to assist in building presentation to the streetscape and to provide visual amenity; Refer Proposed Planting Schedule
- 5** CLIMBERS
 Vertical plant screening to soften proposed dwellings and for increased visual amenity; Refer Proposed Planting Schedule (ie: *Ficus pumila*)

- BUILDING/ ROOF OVER
Refer Architectural drawings
- PROPOSED PROPERTY BOUNDARY
As taken from Survey drawings
- PROPOSED SCREENING FENCE
Refer Architectural drawings
- PROPOSED GARDEN EDGE
To future detail

ISSUE	DATE	REASON
C	27/05/25	ISSUE FOR CONSTRUCTION
B	16/05/25	FOR SUBMISSION TO BCC
A	21/03/25	DRAFT FOR REVIEW



JOB NUMBER	SHEET NO.	ISSUE	DRAWN BY
25.061	1	C	AG / AC

THESE DRAWINGS ARE AT A PRELIMINARY STAGE AND NOT A FULLY DETAILED AND CHECKED DESIGN READY FOR CONSTRUCTION. THIS DRAWING HAS BEEN PREPARED WITH ALL CARE FROM BASE INFORMATION AVAILABLE AT THE TIME OF PREPARATION. AGLA CAN NOT BE LIABLE OR RESPONSIBLE FOR ANY LIABILITIES, CLAIM OR LOSSES ARISING FROM RELIANCE FOR CONSTRUCTION.

PLEASE NOTE THESE DRAWINGS (E.G. VISUAL REPRESENTATIONS, ILLUSTRATIONS, PHOTOGRAPHS, ART RENDERINGS, AND OTHER GRAPHIC REPRESENTATIONS AND REFERENCES) ARE AN ARTIST'S IMPRESSION FOR ILLUSTRATION PURPOSES ONLY. THEY CANNOT BE REGARDED AS REPRESENTATION OF FACT OR THE INTENDED FINAL PRODUCT. CHANGES MAY BE MADE DURING THE FURTHER PLANNING OR DEVELOPMENT STAGES OF THE PROJECT AND DIMENSIONS, FITTINGS, FINISHES, ONGOING COSTS AND SPECIFICATIONS AND REPRESENTATIONS ETC. ARE SUBJECT TO CHANGE WITHOUT NOTICE.

PLANT AND TREE SIZES ARE INDICATIVE TO SUPPORT THE GRAPHIC NATURE OF THE REPRESENTATION AND ARE TYPICALLY SHOWN AT FULL MATURITY RATHER THAN INSTALLATION SIZE. FINAL PLANT AND TREE DENSITIES/ SIZES ARE DEPENDENT ON A RANGE OF FACTORS CONFIRMED DURING THE DETAILED DESIGN AND CONSTRUCTION PHASE.

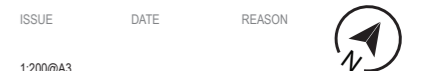
PROPOSED MULTI-UNIT DWELLINGS
 17 REGINA STREET,
 STONES CORNER
 FIRST FLOOR
 LANDSCAPE CONCEPT PLAN



- 1 **PROPOSED STREET TREES**
 Provide new street trees to the road reserves adjacent to the subject site so as to improve the streetscape amenity including visual and climatic amenity. Proposed species to be as per Table 3.7.5.15.A—General species table for small-medium crown trees, and proposed locations as per 3.7.5.3 Planting locations as per SC6.16 Infrastructure design planning scheme policy - Chapter 3 Road corridor design. (ie: *Buckinghamia celsissima*)
- 2 **FEATURE SHADE/ SCREEN TREE**
 Medium to large canopied rounded tree species to provide shade over the frontage, provide visual amenity and landscape softening of the proposed dwellings; Refer Proposed Planting Schedule (ie: *Agathis robusta*, *Olea europaea* Tolley's Upright)
- 3 **PODIUM SHRUBS AND GROUNDCOVERS**
 Mass planting to podium planters to assist in building presentation to the streetscape and to provide visual amenity; Refer Proposed Planting Schedule
- 4 **SHRUBS AND GROUNDCOVERS**
 Mass planting to large areas to assist in building presentation to the streetscape and to provide visual amenity; Refer Proposed Planting Schedule
- 5 **CLIMBERS**
 Vertical plant screening to soften proposed dwellings and for increased visual amenity; Refer Proposed Planting Schedule (ie: *Ficus pumila*)

- BUILDING/ ROOF OVER**
Refer Architectural drawings
- PROPOSED PROPERTY BOUNDARY**
As taken from Survey drawings

ISSUE	DATE	REASON
C	27/05/25	ISSUE FOR CONSTRUCTION
B	16/05/25	FOR SUBMISSION TO BCC
A	21/03/25	DRAFT FOR REVIEW



JOB NUMBER	SHEET NO.	ISSUE	DRAWN BY
25.061	2	C	AG / AC

THESE DRAWINGS ARE AT A PRELIMINARY STAGE AND NOT A FULLY DETAILED AND CHECKED DESIGN READY FOR CONSTRUCTION. THIS DRAWING HAS BEEN PREPARED WITH ALL CARE FROM BASE INFORMATION AVAILABLE AT THE TIME OF PREPARATION. AGLA CAN NOT BE LIABLE OR RESPONSIBLE FOR ANY LIABILITIES, CLAIM OR LOSSES ARISING FROM RELIANCE FOR CONSTRUCTION.

PLEASE NOTE THESE DRAWINGS (E.G. VISUAL REPRESENTATIONS, ILLUSTRATIONS, PHOTOGRAPHS, ART RENDERINGS, AND OTHER GRAPHIC REPRESENTATIONS AND REFERENCES) ARE AN ARTIST'S IMPRESSION FOR ILLUSTRATION PURPOSES ONLY THEY CANNOT BE REGARDED AS REPRESENTATION OF FACT OR THE INTENDED FINAL PRODUCT. CHANGES MAY BE MADE DURING THE FURTHER PLANNING OR DEVELOPMENT STAGES OF THE PROJECT AND DIMENSIONS, FITTINGS, FINISHES, ONGOING COSTS AND SPECIFICATIONS AND REPRESENTATIONS ETC. ARE SUBJECT TO CHANGE WITHOUT NOTICE.

PLANT AND TREE SIZES ARE INDICATIVE TO SUPPORT THE GRAPHIC NATURE OF THE REPRESENTATION AND ARE TYPICALLY SHOWN AT FULL MATURITY RATHER THAN INSTALLATION SIZE. FINAL PLANT AND TREE DENSITIES/ SIZES ARE DEPENDENT ON A RANGE OF FACTORS CONFIRMED DURING THE DETAILED DESIGN AND CONSTRUCTION PHASE.

PROPOSED MULTI-UNIT DWELLINGS
 17 REGINA STREET,
 STONES CORNER
 TYPICAL FLOOR (LEVELS 2-6)
 LANDSCAPE CONCEPT PLAN



- 1 **PROPOSED STREET TREES**
 Provide new street trees to the road reserves adjacent to the subject site so as to improve the streetscape amenity including visual and climatic amenity. Proposed species to be as per Table 3.7.5.15.A—General species table for small-medium crown trees, and proposed locations as per 3.7.5.3 Planting locations as per SC6.16 Infrastructure design planning scheme policy - Chapter 3 Road corridor design. (ie: *Buckinghamia celsissima*)
- 2 **FEATURE SHADE/ SCREEN TREE**
 Medium to large canopied rounded tree species to provide shade over the frontage, provide visual amenity and landscape softening of the proposed dwellings; Refer Proposed Planting Schedule (ie: *Agathis robusta*, *Olea europaea* Tolley's Upright)
- 3 **PODIUM SHRUBS AND GROUNDCOVERS**
 Mass planting to podium planters to assist in building presentation to the streetscape and to provide visual amenity; Refer Proposed Planting Schedule
- 4 **SHRUBS AND GROUNDCOVERS**
 Mass planting to large areas to assist in building presentation to the streetscape and to provide visual amenity; Refer Proposed Planting Schedule
- 5 **CLIMBERS**
 Vertical plant screening to soften proposed dwellings and for increased visual amenity; Refer Proposed Planting Schedule (ie: *Ficus pumila*)

- BUILDING/ ROOF OVER**
Refer Architectural drawings
- PROPOSED PROPERTY BOUNDARY**
As taken from Survey drawings

ISSUE	DATE	REASON
C	27/05/25	ISSUE FOR CONSTRUCTION
B	16/05/25	FOR SUBMISSION TO BCC
A	21/03/25	DRAFT FOR REVIEW

1:200@A3

JOB NUMBER: 25.061 SHEET NO.: 3 ISSUE: C DRAWN BY: AG / AC

THESE DRAWINGS ARE AT A PRELIMINARY STAGE AND NOT A FULLY DETAILED AND CHECKED DESIGN READY FOR CONSTRUCTION. THIS DRAWING HAS BEEN PREPARED WITH ALL CARE FROM BASE INFORMATION AVAILABLE AT THE TIME OF PREPARATION. AGLA CAN NOT BE LIABLE OR RESPONSIBLE FOR ANY LIABILITIES, CLAIM OR LOSSES ARISING FROM RELIANCE FOR CONSTRUCTION.

PLEASE NOTE THESE DRAWINGS (E.G. VISUAL REPRESENTATIONS, ILLUSTRATIONS, PHOTOGRAPHS, ART RENDERINGS, AND OTHER GRAPHIC REPRESENTATIONS AND REFERENCES) ARE AN ARTIST'S IMPRESSION FOR ILLUSTRATION PURPOSES ONLY. THEY CANNOT BE REGARDED AS REPRESENTATION OF FACT OR THE INTENDED FINAL PRODUCT. CHANGES MAY BE MADE DURING THE FURTHER PLANNING OR DEVELOPMENT STAGES OF THE PROJECT AND DIMENSIONS, FITTINGS, FINISHES, ONGOING COSTS AND SPECIFICATIONS AND REPRESENTATIONS ETC. ARE SUBJECT TO CHANGE WITHOUT NOTICE.

PLANT AND TREE SIZES ARE INDICATIVE TO SUPPORT THE GRAPHIC NATURE OF THE REPRESENTATION AND ARE TYPICALLY SHOWN AT FULL MATURITY RATHER THAN INSTALLATION SIZE. FINAL PLANT AND TREE DENSITIES/ SIZES ARE DEPENDENT ON A RANGE OF FACTORS CONFIRMED DURING THE DETAILED DESIGN AND CONSTRUCTION PHASE.

PROPOSED MULTI-UNIT DWELLINGS
 17 REGINA STREET,
 STONES CORNER
 ROOF TERRACE
 LANDSCAPE CONCEPT PLAN



- 1 **PROPOSED STREET TREES**
 Provide new street trees to the road reserves adjacent to the subject site so as to improve the streetscape amenity including visual and climatic amenity. Proposed species to be as per Table 3.7.5.15.A—General species table for small–medium crown trees, and proposed locations as per 3.7.5.3 Planting locations as per SC6.16 Infrastructure design planning scheme policy - Chapter 3 Road corridor design. (ie: *Buckinghamia celsissima*)
- 2 **FEATURE SHADE/ SCREEN TREE**
 Medium to large canopied rounded tree species to provide shade over the frontage, provide visual amenity and landscape softening of the proposed dwellings; Refer Proposed Planting Schedule (ie: *Agathis robusta*, *Olea europaea* Tolley's Upright)
- 3 **PODIUM SHRUBS AND GROUNDCOVERS**
 Mass planting to podium planters to assist in building presentation to the streetscape and to provide visual amenity; Refer Proposed Planting Schedule
- 4 **SHRUBS AND GROUNDCOVERS**
 Mass planting to large areas to assist in building presentation to the streetscape and to provide visual amenity; Refer Proposed Planting Schedule
- 5 **CLIMBERS**
 Vertical plant screening to soften proposed dwellings and for increased visual amenity; Refer Proposed Planting Schedule (ie: *Ficus pumila*)

- BUILDING/ ROOF OVER**
Refer Architectural drawings
- PROPOSED PROPERTY BOUNDARY**
As taken from Survey drawings

ISSUE	DATE	REASON
C	27/05/25	ISSUE FOR CONSTRUCTION
B	16/05/25	FOR SUBMISSION TO BCC
A	21/03/25	DRAFT FOR REVIEW



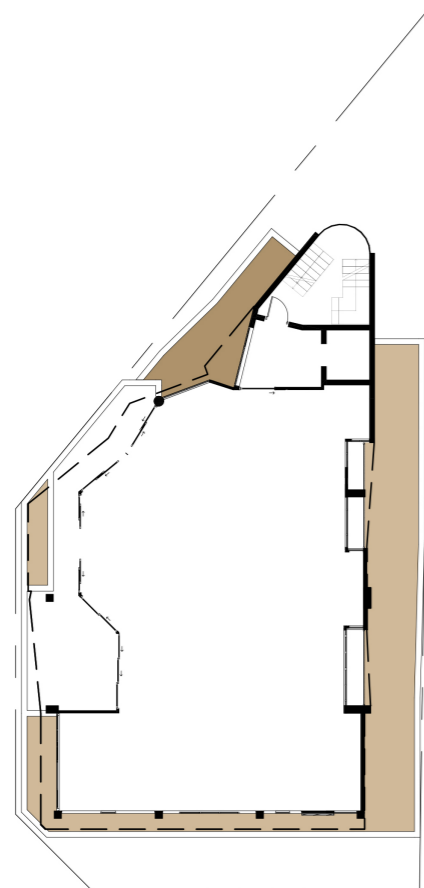
JOB NUMBER	SHEET NO.	ISSUE	DRAWN BY
25.061	4	C	AG / AC

THESE DRAWINGS ARE AT A PRELIMINARY STAGE AND NOT A FULLY DETAILED AND CHECKED DESIGN READY FOR CONSTRUCTION. THIS DRAWING HAS BEEN PREPARED WITH ALL CARE FROM BASE INFORMATION AVAILABLE AT THE TIME OF PREPARATION. AGLA CAN NOT BE LIABLE OR RESPONSIBLE FOR ANY LIABILITIES, CLAIM OR LOSSES ARISING FROM RELIANCE FOR CONSTRUCTION.

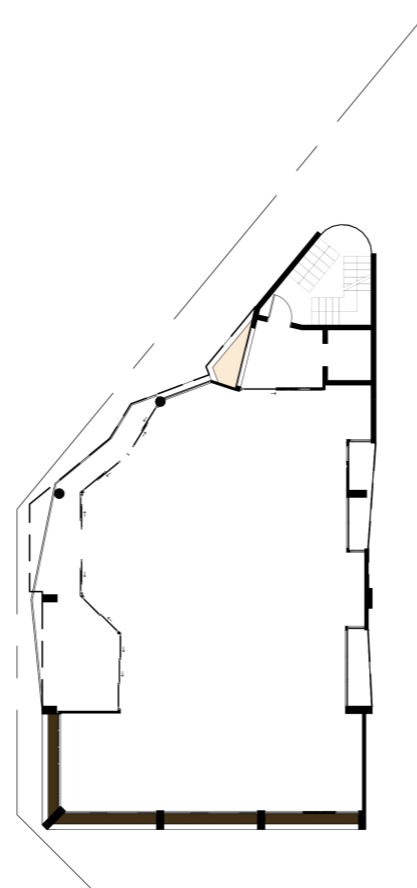
PLEASE NOTE THESE DRAWINGS (E.G. VISUAL REPRESENTATIONS, ILLUSTRATIONS, PHOTOGRAPHS, ART RENDERINGS, AND OTHER GRAPHIC REPRESENTATIONS AND REFERENCES) ARE AN ARTIST'S IMPRESSION FOR ILLUSTRATION PURPOSES ONLY THEY CANNOT BE REGARDED AS REPRESENTATION OF FACT OR THE INTENDED FINAL PRODUCT. CHANGES MAY BE MADE DURING THE FURTHER PLANNING OR DEVELOPMENT STAGES OF THE PROJECT AND DIMENSIONS, FITTINGS, FINISHES, ONGOING COSTS AND SPECIFICATIONS AND REPRESENTATIONS ETC. ARE SUBJECT TO CHANGE WITHOUT NOTICE.

PLANT AND TREE SIZES ARE INDICATIVE TO SUPPORT THE GRAPHIC NATURE OF THE REPRESENTATION AND ARE TYPICALLY SHOWN AT FULL MATURITY RATHER THAN INSTALLATION SIZE. FINAL PLANT AND TREE DENSITIES/ SIZES ARE DEPENDENT ON A RANGE OF FACTORS CONFIRMED DURING THE DETAILED DESIGN AND CONSTRUCTION PHASE.

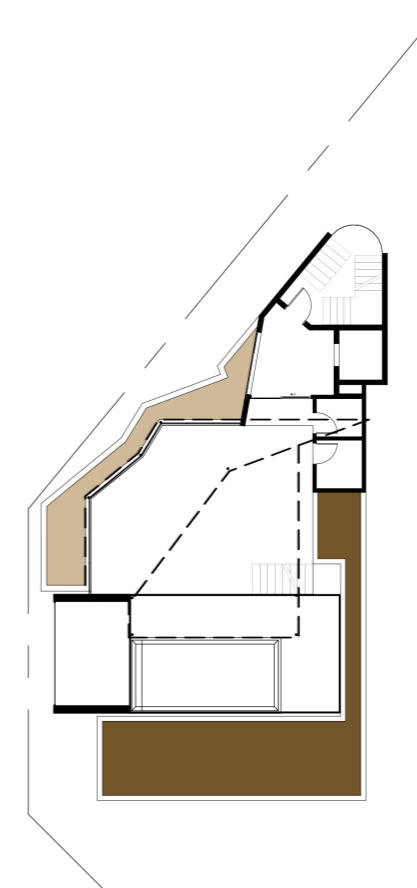
FIRST FLOOR



TYPICAL FLOOR (LEVELS 2-6)



ROOF TERRACE



- PODIUM PLANTER - 1380mm DEEP
- PODIUM PLANTER - 1100mm DEEP
- PODIUM PLANTER - 1050mm DEEP
- PODIUM PLANTER - 900mm DEEP
- PODIUM PLANTER - 620mm DEEP

ISSUE	DATE	REASON
C	27/05/25	ISSUE FOR CONSTRUCTION
B	16/05/25	FOR SUBMISSION TO BCC
A	21/03/25	DRAFT FOR REVIEW

1:300@A3

JOB NUMBER	SHEET NO.	ISSUE	DRAWN BY
25.061	5	C	AG / AC

THESE DRAWINGS ARE AT A PRELIMINARY STAGE AND NOT A FULLY DETAILED AND CHECKED DESIGN READY FOR CONSTRUCTION. THIS DRAWING HAS BEEN PREPARED WITH ALL CARE FROM BASE INFORMATION AVAILABLE AT THE TIME OF PREPARATION. AGLA CAN NOT BE LIABLE OR RESPONSIBLE FOR ANY LIABILITIES, CLAIM OR LOSSES ARISING FROM RELIANCE FOR CONSTRUCTION.

PLEASE NOTE THESE DRAWINGS (E.G. VISUAL REPRESENTATIONS, ILLUSTRATIONS, PHOTOGRAPHS, ART RENDERINGS, AND OTHER GRAPHIC REPRESENTATIONS AND REFERENCES) ARE AN ARTIST'S IMPRESSION FOR ILLUSTRATION PURPOSES ONLY. THEY CANNOT BE REGARDED AS REPRESENTATION OF FACT OR THE INTENDED FINAL PRODUCT. CHANGES MAY BE MADE DURING THE FURTHER PLANNING OR DEVELOPMENT STAGES OF THE PROJECT AND DIMENSIONS, FITTINGS, FINISHES, ONGOING COSTS AND SPECIFICATIONS AND REPRESENTATIONS ETC. ARE SUBJECT TO CHANGE WITHOUT NOTICE.

PLANT AND TREE SIZES ARE INDICATIVE TO SUPPORT THE GRAPHIC NATURE OF THE REPRESENTATION AND ARE TYPICALLY SHOWN AT FULL MATURITY RATHER THAN INSTALLATION SIZE. FINAL PLANT AND TREE DENSITIES/ SIZES ARE DEPENDENT ON A RANGE OF FACTORS CONFIRMED DURING THE DETAILED DESIGN AND CONSTRUCTION PHASE.

SOUTH ELEVATION

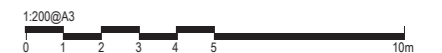
SCALE 1:200 @ A3



- 1 **PROPOSED STREET TREES**
 Provide new street trees to the road reserves adjacent to the subject site so as to improve the streetscape amenity including visual and climatic amenity. Proposed species to be as per Table 3.7.5.15.A—General species table for small-medium crown trees, and proposed locations as per 3.7.5.3 Planting locations as per SC6.16 Infrastructure design planning scheme policy - Chapter 3 Road corridor design. (ie: *Buckinghamia celsissima*)
- 2 **FEATURE SHADE/ SCREEN TREE**
 Medium to large canopied rounded tree species to provide shade over the frontage, provide visual amenity and landscape softening of the proposed dwellings; Refer Proposed Planting Schedule (ie: *Agathis robusta*, *Olea europaea* Tolley's Upright)
- 3 **PODIUM SHRUBS AND GROUNDCOVERS**
 Mass planting to podium planters to assist in building presentation to the streetscape and to provide visual amenity; Refer Proposed Planting Schedule
- 4 **SHRUBS AND GROUNDCOVERS**
 Mass planting to large areas to assist in building presentation to the streetscape and to provide visual amenity; Refer Proposed Planting Schedule
- 5 **CLIMBERS**
 Vertical plant screening to soften proposed dwellings and for increased visual amenity; Refer Proposed Planting Schedule (ie: *Ficus pumila*)

C	27/05/25	ISSUE FOR CONSTRUCTION
B	16/05/25	FOR SUBMISSION TO BCC
A	21/03/25	DRAFT FOR REVIEW

ISSUE	DATE	REASON
-------	------	--------



JOB NUMBER	SHEET NO.	ISSUE	DRAWN BY
25.061	6	C	AG / AC

THESE DRAWINGS ARE AT A PRELIMINARY STAGE AND NOT A FULLY DETAILED AND CHECKED DESIGN READY FOR CONSTRUCTION. THIS DRAWING HAS BEEN PREPARED WITH ALL CARE FROM BASE INFORMATION AVAILABLE AT THE TIME OF PREPARATION. AGLA CAN NOT BE LIABLE OR RESPONSIBLE FOR ANY LIABILITIES, CLAIM OR LOSSES ARISING FROM RELIANCE FOR CONSTRUCTION.

PLEASE NOTE THESE DRAWINGS (E.G. VISUAL REPRESENTATIONS, ILLUSTRATIONS, PHOTOGRAPHS, ART RENDERINGS, AND OTHER GRAPHIC REPRESENTATIONS AND REFERENCES) ARE AN ARTIST'S IMPRESSION FOR ILLUSTRATION PURPOSES ONLY THEY CANNOT BE REGARDED AS REPRESENTATION OF FACT OR THE INTENDED FINAL PRODUCT. CHANGES MAY BE MADE DURING THE FURTHER PLANNING OR DEVELOPMENT STAGES OF THE PROJECT AND DIMENSIONS, FITTINGS, FINISHES, ONGOING COSTS AND SPECIFICATIONS AND REPRESENTATIONS ETC. ARE SUBJECT TO CHANGE WITHOUT NOTICE.

PLANT AND TREE SIZES ARE INDICATIVE TO SUPPORT THE GRAPHIC NATURE OF THE REPRESENTATION AND ARE TYPICALLY SHOWN AT FULL MATURITY RATHER THAN INSTALLATION SIZE. FINAL PLANT AND TREE DENSITIES/ SIZES ARE DEPENDENT ON A RANGE OF FACTORS CONFIRMED DURING THE DETAILED DESIGN AND CONSTRUCTION PHASE.

WEST ELEVATION

SCALE 1:200 @ A3



- 1 PROPOSED STREET TREES
 Provide new street trees to the road reserves adjacent to the subject site so as to improve the streetscape amenity including visual and climatic amenity. Proposed species to be as per Table 3.7.5.15.A—General species table for small-medium crown trees, and proposed locations as per 3.7.5.3 Planting locations as per SC6.16 Infrastructure design planning scheme policy - Chapter 3 Road corridor design. (ie: *Buckinghamia celsissima*)
- 2 FEATURE SHADE/ SCREEN TREE
 Medium to large canopied rounded tree species to provide shade over the frontage, provide visual amenity and landscape softening of the proposed dwellings; Refer Proposed Planting Schedule (ie: *Agathis robusta*, *Olea europaea* Tolley's Upright)
- 3 PODIUM SHRUBS AND GROUNDCOVERS
 Mass planting to podium planters to assist in building presentation to the streetscape and to provide visual amenity; Refer Proposed Planting Schedule
- 4 SHRUBS AND GROUNDCOVERS
 Mass planting to large areas to assist in building presentation to the streetscape and to provide visual amenity; Refer Proposed Planting Schedule
- 5 CLIMBERS
 Vertical plant screening to soften proposed dwellings and for increased visual amenity; Refer Proposed Planting Schedule (ie: *Ficus pumila*)

C	27/05/25	ISSUE FOR CONSTRUCTION
B	16/05/25	FOR SUBMISSION TO BCC
A	21/03/25	DRAFT FOR REVIEW

ISSUE	DATE	REASON
-------	------	--------



JOB NUMBER	SHEET NO.	ISSUE	DRAWN BY
25.061	7	C	AG / AC

THESE DRAWINGS ARE AT A PRELIMINARY STAGE AND NOT A FULLY DETAILED AND CHECKED DESIGN READY FOR CONSTRUCTION. THIS DRAWING HAS BEEN PREPARED WITH ALL CARE FROM BASE INFORMATION AVAILABLE AT THE TIME OF PREPARATION. AGLA CAN NOT BE LIABLE OR RESPONSIBLE FOR ANY LIABILITIES, CLAIM OR LOSSES ARISING FROM RELIANCE FOR CONSTRUCTION.

PLEASE NOTE THESE DRAWINGS (E.G. VISUAL REPRESENTATIONS, ILLUSTRATIONS, PHOTOGRAPHS, ART RENDERINGS, AND OTHER GRAPHIC REPRESENTATIONS AND REFERENCES) ARE AN ARTIST'S IMPRESSION FOR ILLUSTRATION PURPOSES ONLY THEY CANNOT BE REGARDED AS REPRESENTATION OF FACT OR THE INTENDED FINAL PRODUCT. CHANGES MAY BE MADE DURING THE FURTHER PLANNING OR DEVELOPMENT STAGES OF THE PROJECT AND DIMENSIONS, FITTINGS, FINISHES, ONGOING COSTS AND SPECIFICATIONS AND REPRESENTATIONS ETC. ARE SUBJECT TO CHANGE WITHOUT NOTICE.

PLANT AND TREE SIZES ARE INDICATIVE TO SUPPORT THE GRAPHIC NATURE OF THE REPRESENTATION AND ARE TYPICALLY SHOWN AT FULL MATURITY RATHER THAN INSTALLATION SIZE. FINAL PLANT AND TREE DENSITIES/ SIZES ARE DEPENDENT ON A RANGE OF FACTORS CONFIRMED DURING THE DETAILED DESIGN AND CONSTRUCTION PHASE.



CODE	SPECIES	COMMON NAME	SIZE*	SPACING (m)**	HEIGHT (m)	WIDTH (m)
1 PROPOSED STREET TREES						
As taken from SC6.16 Infrastructure design planning scheme policy Chapter 3 Road corridor design Table 3.7.5.15.A—General species table for small–medium crown trees						
1.1	<i>Buckinghamia celsissima</i>	Ivory Curl	45L	as shown	8	4
2 PROPOSED FEATURE SHADE/ SCREEN TREES						
2.1	<i>Agathis robusta</i>	Queensland Kauri Pine	200L	as shown	25	7
2.2	<i>Olea europaea</i>	Tolley's Upright Olive	200L	as shown	7	4

***PLANT CONTAINER SIZE:**

200L 200 Litre container stock min Min. height at time of planting: 3.6m

****PLANT SPACING:**

The proposed densities of plants will be derived as a compromise between growth rate, anticipated size, and the ability to provide a good vegetative cover within a reasonable space of time.

C	27/05/25	ISSUE FOR CONSTRUCTION
B	16/05/25	FOR SUBMISSION TO BCC
A	21/03/25	DRAFT FOR REVIEW

ISSUE	DATE	REASON
-------	------	--------

JOB NUMBER	SHEET NO.	ISSUE	DRAWN BY
25.061	8	C	AG / AC

THESE DRAWINGS ARE AT A PRELIMINARY STAGE AND NOT A FULLY DETAILED AND CHECKED DESIGN READY FOR CONSTRUCTION. THIS DRAWING HAS BEEN PREPARED WITH ALL CARE FROM BASE INFORMATION AVAILABLE AT THE TIME OF PREPARATION. AGLA CAN NOT BE LIABLE OR RESPONSIBLE FOR ANY LIABILITIES, CLAIM OR LOSSES ARISING FROM RELIANCE FOR CONSTRUCTION.

PLEASE NOTE THESE DRAWINGS (E.G. VISUAL REPRESENTATIONS, ILLUSTRATIONS, PHOTOGRAPHS, ART RENDERINGS, AND OTHER GRAPHIC REPRESENTATIONS AND REFERENCES) ARE AN ARTIST'S IMPRESSION FOR ILLUSTRATION PURPOSES ONLY THEY CANNOT BE REGARDED AS REPRESENTATION OF FACT OR THE INTENDED FINAL PRODUCT. CHANGES MAY BE MADE DURING THE FURTHER PLANNING OR DEVELOPMENT STAGES OF THE PROJECT AND DIMENSIONS, FITTINGS, FINISHES, ONGOING COSTS AND SPECIFICATIONS AND REPRESENTATIONS ETC. ARE SUBJECT TO CHANGE WITHOUT NOTICE.

PLANT AND TREE SIZES ARE INDICATIVE TO SUPPORT THE GRAPHIC NATURE OF THE REPRESENTATION AND ARE TYPICALLY SHOWN AT FULL MATURITY RATHER THAN INSTALLATION SIZE. FINAL PLANT AND TREE DENSITIES/ SIZES ARE DEPENDENT ON A RANGE OF FACTORS CONFIRMED DURING THE DETAILED DESIGN AND CONSTRUCTION PHASE.



CODE	SPECIES	COMMON NAME	SIZE*	SPACING (m)**	HEIGHT (m)	WIDTH (m)
3 PROPOSED PODIUM SHRUBS AND GROUNDCOVERS						
3.1	<i>Casuarina glauca</i> Cousin It	Prostrate Casuarina	200mm	3 per m2	0.3	1.5
3.2	<i>Doryanthes excelsa</i>	Gyneria Lily	300mm	1.5	2	2
3.3	<i>Kalanchoe bracteata</i> Silver Spoons	Kalanchoe	200mm	0.8	1.2	1
3.4	<i>Rosmarinus officinalis</i> Huntington Carpet	Creeping Rosemary	200mm	1	0.3-0.5	2
3.5	<i>Senecio serpens</i>	Blue Chalksticks	200mm	0.5	0.25	0.6
3.6	<i>Sedum hybrida</i> Green Mound	Stoncrop	200mm	0.6	0.15	0.6-1
4 PROPOSED SHRUBS AND GROUNDCOVERS						
4.1	<i>Agapanthus orientalis</i> River Garden White	Dwarf Agapanthus	200mm	0.5	0.7	0.7
4.2	<i>Carissa macrocarpa</i> Green Carpet	Prostrate Desert Star	200mm	1	0.6	1.5
4.3	<i>Gardenia augusta</i> (KENO) O So Fine	Creeping Gardenia	140mm	0.8	0.3	1
4.4	<i>Helichrysum petiolare</i>	Licorice Plant	200mm	1.2	0.6	2
4.5	<i>Kalanchoe bracteata</i> Silver Spoons	Kalanchoe	200mm	0.8	1.2	1
4.6	<i>Pittosporum tenuifolium</i> Golf Ball	Dwarf Pittosporum	200mm	0.5	0.6	0.6
4.7	<i>Pittosporum tobira</i> Wheelers Dwarf	Dwarf Pittosporum	200mm	1	1	1
5 PROPOSED CLIMBERS						
5.1	<i>Ficus pumila</i>	Climbing Fig	140mm	0.5	-	-

***PLANT CONTAINER SIZE:**

300mm	300mm dia minimum pot size
200mm	200mm dia minimum pot size
140mm	140mm dia minimum pot size

****PLANT SPACING:**

The proposed densities of plants will be derived as a compromise between growth rate, anticipated size, and the ability to provide a good vegetative cover within a reasonable space of time.

C	27/05/25	ISSUE FOR CONSTRUCTION
B	16/05/25	FOR SUBMISSION TO BCC
A	21/03/25	DRAFT FOR REVIEW

ISSUE	DATE	REASON
-------	------	--------

JOB NUMBER	SHEET NO.	ISSUE	DRAWN BY
25.061	9	C	AG / AC

THESE DRAWINGS ARE AT A PRELIMINARY STAGE AND NOT A FULLY DETAILED AND CHECKED DESIGN READY FOR CONSTRUCTION. THIS DRAWING HAS BEEN PREPARED WITH ALL CARE FROM BASE INFORMATION AVAILABLE AT THE TIME OF PREPARATION. AGLA CAN NOT BE LIABLE OR RESPONSIBLE FOR ANY LIABILITIES, CLAIM OR LOSSES ARISING FROM RELIANCE FOR CONSTRUCTION.

PLEASE NOTE THESE DRAWINGS (E.G. VISUAL REPRESENTATIONS, ILLUSTRATIONS, PHOTOGRAPHS, ART RENDERINGS, AND OTHER GRAPHIC REPRESENTATIONS AND REFERENCES) ARE AN ARTIST'S IMPRESSION FOR ILLUSTRATION PURPOSES ONLY THEY CANNOT BE REGARDED AS REPRESENTATION OF FACT OR THE INTENDED FINAL PRODUCT. CHANGES MAY BE MADE DURING THE FURTHER PLANNING OR DEVELOPMENT STAGES OF THE PROJECT AND DIMENSIONS, FITTINGS, FINISHES, ONGOING COSTS AND SPECIFICATIONS AND REPRESENTATIONS ETC. ARE SUBJECT TO CHANGE WITHOUT NOTICE.

PLANT AND TREE SIZES ARE INDICATIVE TO SUPPORT THE GRAPHIC NATURE OF THE REPRESENTATION AND ARE TYPICALLY SHOWN AT FULL MATURITY RATHER THAN INSTALLATION SIZE. FINAL PLANT AND TREE DENSITIES/ SIZES ARE DEPENDENT ON A RANGE OF FACTORS CONFIRMED DURING THE DETAILED DESIGN AND CONSTRUCTION PHASE.