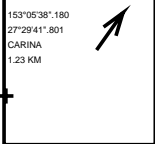


STANDARD MAP NUMBER
9543-33223



MAP WINDOW POSITION & NEAREST LOCATION



SUBJECT PARCEL DESCRIPTION

DCDB	
Lot/Plan	64/RP102531
Area/Volume	607m²
Tenure	FREEHOLD
Local Government	BRISBANE CITY
Locality	CARINA
Segment/Parcel	18764/18

CLIENT SERVICE STANDARDS

PRINTED 12/02/2026

DCDB 11/02/2026

Users of the information recorded in this document (the Information) accept all responsibility and risk associated with the use of the Information and should seek independent professional advice in relation to dealings with property.

Despite Department of Resources best efforts, RESOURCES makes no representations or warranties in relation to the Information, and, to the extent permitted by law, exclude or limit all warranties relating to correctness, accuracy, reliability, completeness or currency and all liability for any direct, indirect and consequential costs, losses, damages and expenses incurred in any way (including but not limited to that arising from negligence) in connection with any use of or reliance on the Information

For further information on SmartMap products visit <https://www.qld.gov.au/housing/buying-owning-home/property-land-valuations/smartmaps>

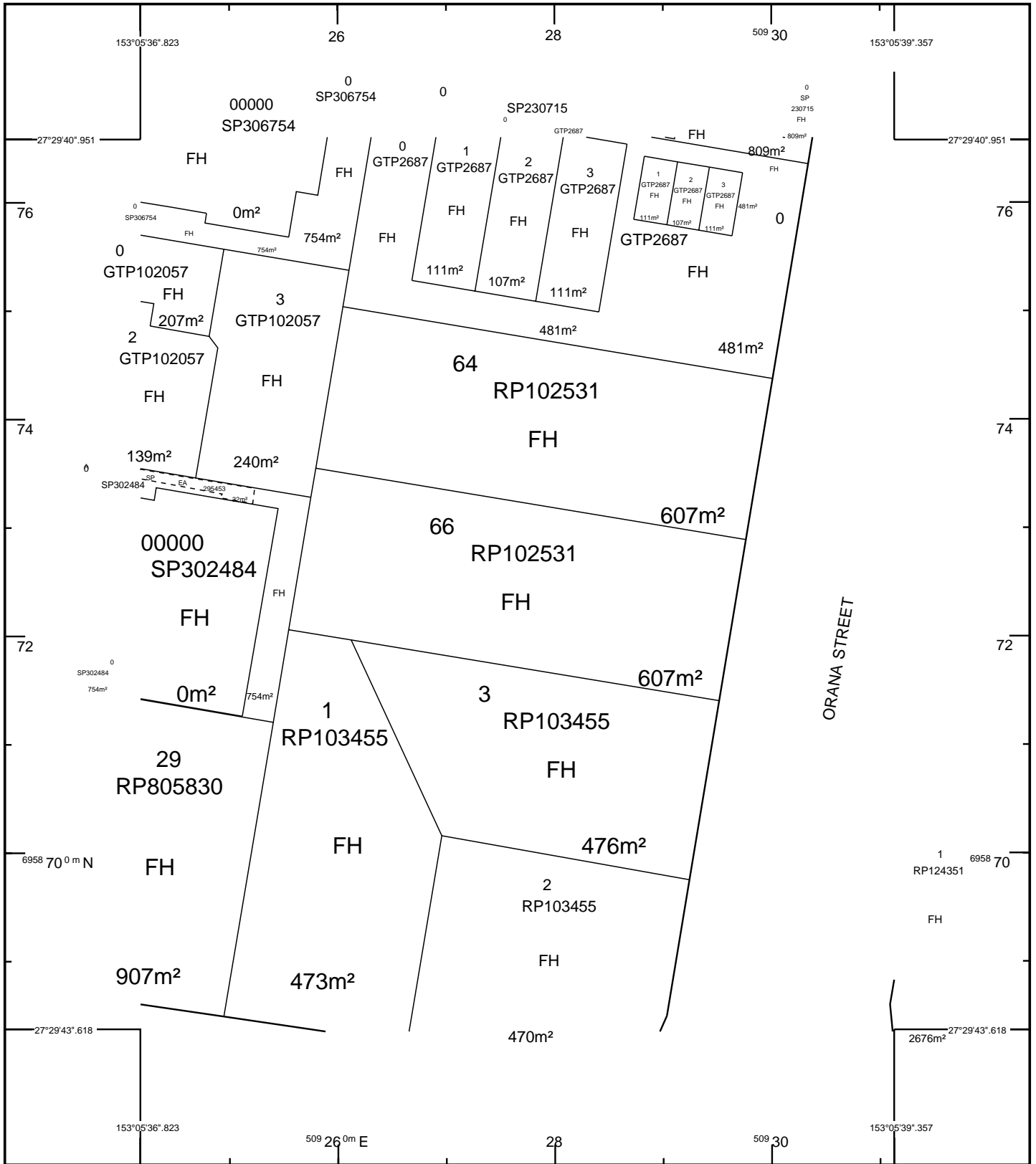
SmartMap

An External Product of SmartMap Information Services
Based upon an extraction from the Digital Cadastral Data Base



Queensland Government
(c) The State of Queensland, (Department of Resources) 2026.

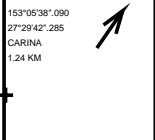




STANDARD MAP NUMBER
9543-33223



MAP WINDOW POSITION & NEAREST LOCATION



SUBJECT PARCEL DESCRIPTION

DCDB	
Lot/Plan	66/RP102531
Area/Volume	607m²
Tenure	FREEHOLD
Local Government	BRISBANE CITY
Locality	CARINA
Segment/Parcel	18764/21

CLIENT SERVICE STANDARDS

PRINTED 12/02/2026

DCDB 11/02/2026

Users of the information recorded in this document (the Information) accept all responsibility and risk associated with the use of the Information and should seek independent professional advice in relation to dealings with property.

Despite Department of Resources best efforts, RESOURCES makes no representations or warranties in relation to the Information, and, to the extent permitted by law, exclude or limit all warranties relating to correctness, accuracy, reliability, completeness or currency and all liability for any direct, indirect and consequential costs, losses, damages and expenses incurred in any way (including but not limited to that arising from negligence) in connection with any use of or reliance on the Information

For further information on SmartMap products visit
<https://www.qld.gov.au/housing/buying-owning-home/property-land-valuations/smartmaps>

SmartMap

An External Product of
SmartMap Information Services

Based upon an extraction from the
Digital Cadastral Data Base



**Queensland
Government**

(c) The State of Queensland,
(Department of Resources) 2026.



Matters of Interest for all selected Lot Plans

SEQ Regional Plan land use categories
Water resource planning area boundaries

Matters of Interest by Lot Plan

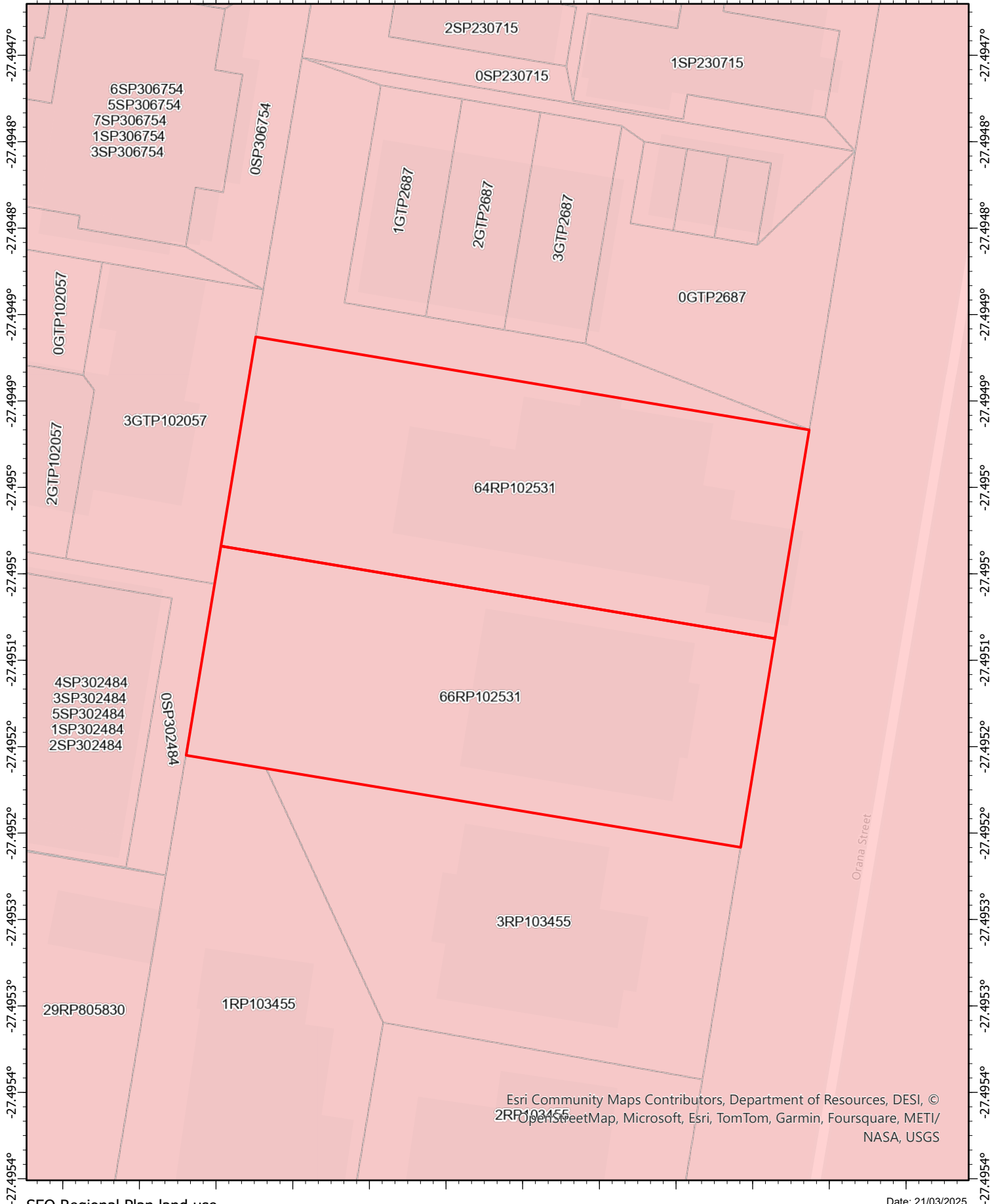
Lot Plan: 64RP102531 (Area: 607 m²)

SEQ Regional Plan land use categories
Water resource planning area boundaries

Lot Plan: 66RP102531 (Area: 607 m²)

SEQ Regional Plan land use categories
Water resource planning area boundaries

153.0936° 153.0936° 153.0937° 153.0937° 153.0938° 153.0938° 153.0939° 153.0939° 153.094° 153.0941° 153.0941° 153.0942°

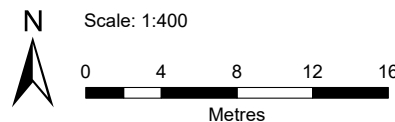


SEQ Regional Plan land use categories

Regional Land Use Category

Urban Footprint

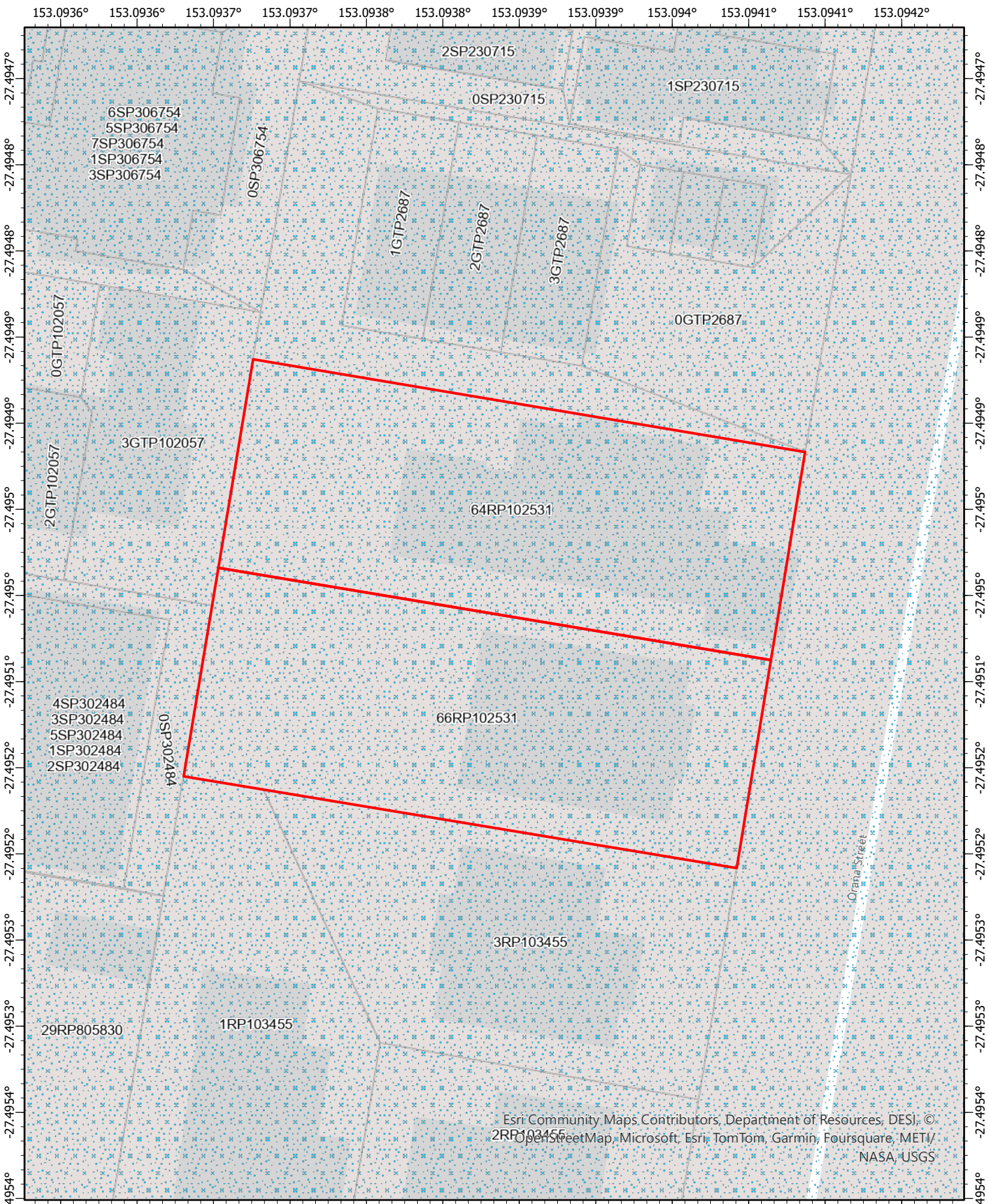
Date: 21/03/2025




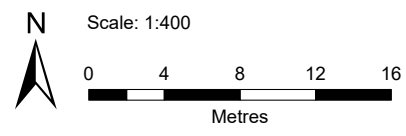
Disclaimer This map has been generated from the information supplied to the Queensland Government for the purposes of the Development Assessment Mapping System. The map generated has been prepared with due care based on the best available information at the time of publication. The State of Queensland holds no responsibility for any errors, inconsistencies or omissions within this document. Any decisions made by other parties based on this document are solely the responsibility of those parties. This information is supplied subject to the full terms and conditions available on the department's website.

Queensland Government





 Water resource planning area boundaries



Date: 21/03/2025

Disclaimer This map has been generated from the information supplied to the Queensland Government for the purposes of the Development Assessment Mapping System. The map generated has been prepared with due care based on the best available information at the time of publication. The State of Queensland holds no responsibility for any errors, inconsistencies or omissions within this document. Any decisions made by other parties based on this document are solely the responsibility of those parties. This information is supplied subject to the full terms and conditions available on the department's website.

Queensland Government

