

Matters of Interest for all selected Lot Plans

SEQ major enterprise and industrial area (MEIA)
SEQ Regional Plan land use categories
Coastal management district
Coastal area - erosion prone area
Coastal area - medium storm tide inundation area
Coastal area - high storm tide inundation area
Queensland waterways for waterway barrier works
Major (tidal)
Water resource planning area boundaries
Regulated vegetation management map (Category A and B extract)
Core koala habitat area

Matters of Interest by Lot Plan

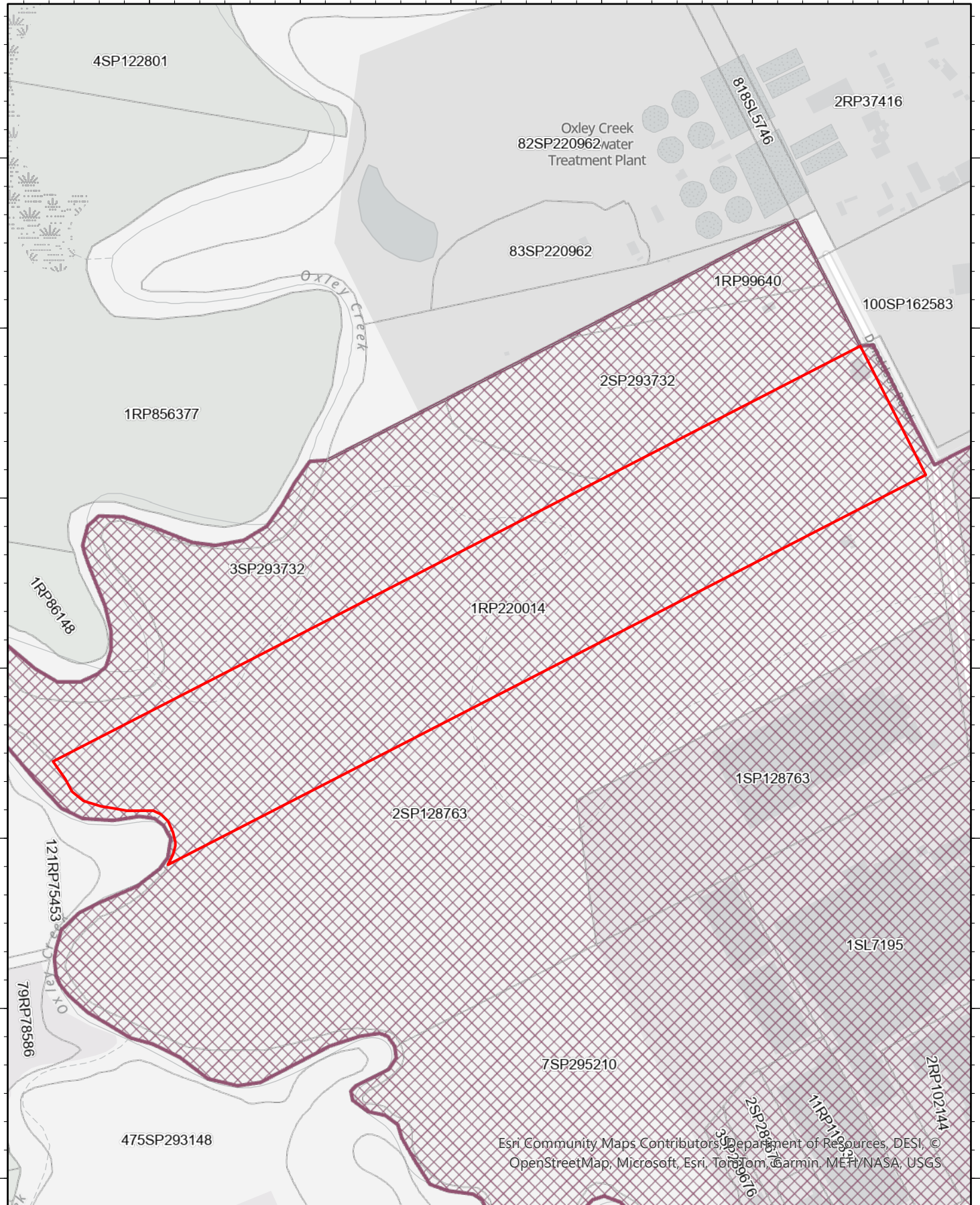
Lot Plan: 1RP220014 (Area: 101171 m²)


SEQ major enterprise and industrial area (MEIA)
SEQ Regional Plan land use categories
Coastal management district
Coastal area - erosion prone area
Coastal area - medium storm tide inundation area
Coastal area - high storm tide inundation area
Queensland waterways for waterway barrier works
Major (tidal)
Water resource planning area boundaries
Regulated vegetation management map (Category A and B extract)
Core koala habitat area

152.9847° 152.9861° 152.9875° 152.9888° 152.9902° 152.9916°

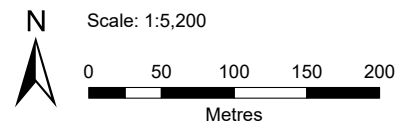
-27.5542°
-27.5556°
-27.557°
-27.5584°
-27.5598°
-27.5612°
-27.5625°

-27.5542°
-27.5556°
-27.557°
-27.5584°
-27.5598°
-27.5612°
-27.5625°



 SEQ major enterprise and industrial area (MEIA)

Date: 05/01/2026

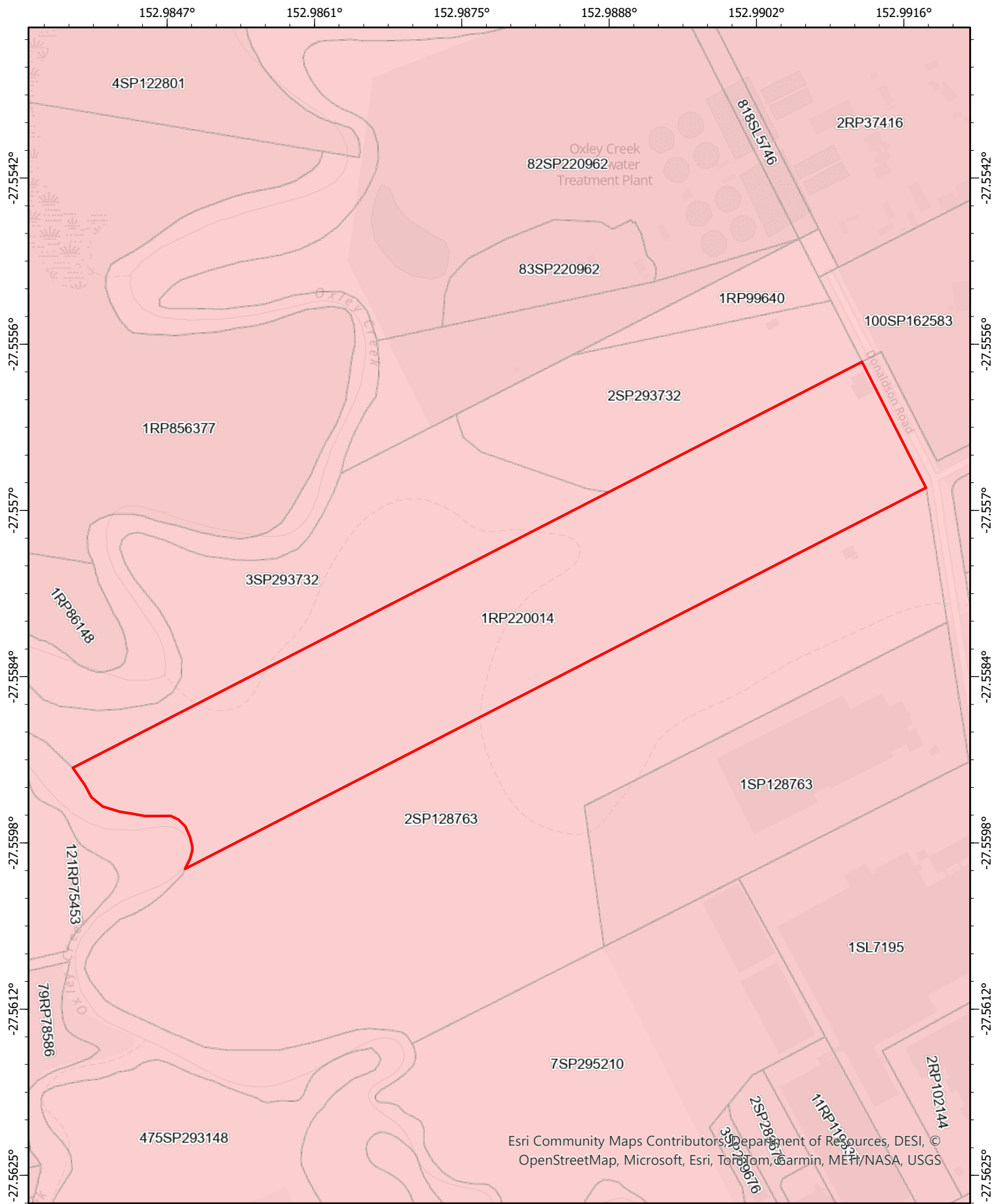


Disclaimer This map has been generated from the information supplied to the Queensland Government for the purposes of the Development Assessment Mapping System. The map generated has been prepared with due care based on the best available information at the time of publication. The State of Queensland holds no responsibility for any errors, inconsistencies or omissions within this document. Any decisions made by other parties based on this document are solely the responsibility of those parties. This information is supplied subject to the full terms and conditions available on the department's website.

Queensland
Government



© The State of Queensland 2026.

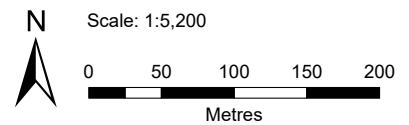


SEQ Regional Plan land use categories

Regional Land Use Category

Urban Footprint

Date: 05/01/2026

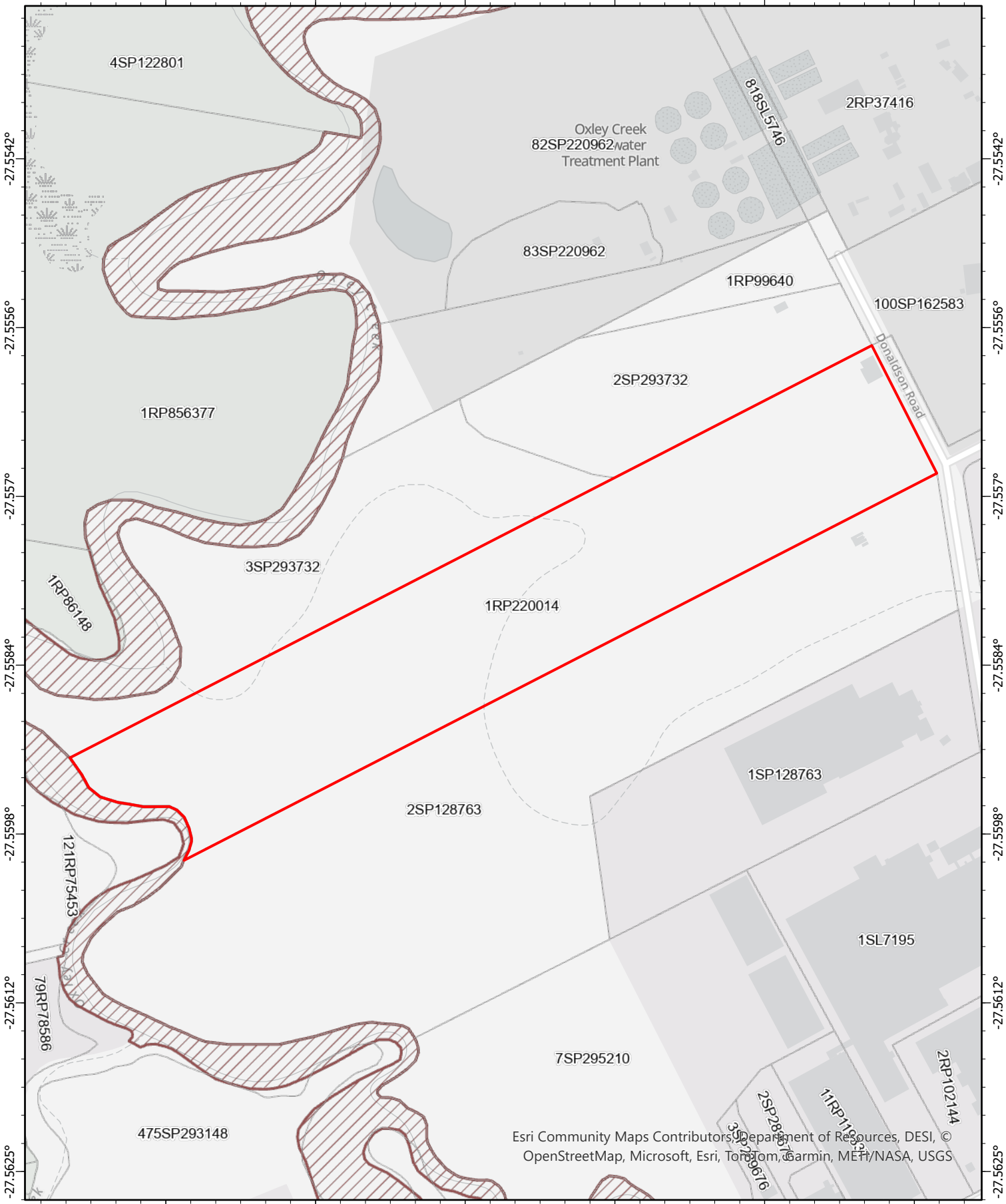


Disclaimer This map has been generated from the information supplied to the Queensland Government for the purposes of the Development Assessment Mapping System. The map generated has been prepared with due care based on the best available information at the time of publication. The State of Queensland holds no responsibility for any errors, inconsistencies or omissions within this document. Any decisions made by other parties based on this document are solely the responsibility of those parties. This information is supplied subject to the full terms and conditions available on the department's website.

Queensland
Government



152.9847° 152.9861° 152.9875° 152.9888° 152.9902° 152.9916°



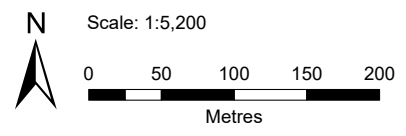
-27.5542°
-27.5556°
-27.5570°
-27.5584°
-27.5598°
-27.5612°
-27.5625°

-27.5542°
-27.5556°
-27.5570°
-27.5584°
-27.5598°
-27.5612°
-27.5625°

Esri Community Maps Contributors, Department of Resources, DESI, ©
OpenStreetMap, Microsoft, Esri, TomTom, Garmin, MET/NASA, USGS

Date: 05/01/2026

Coastal management district



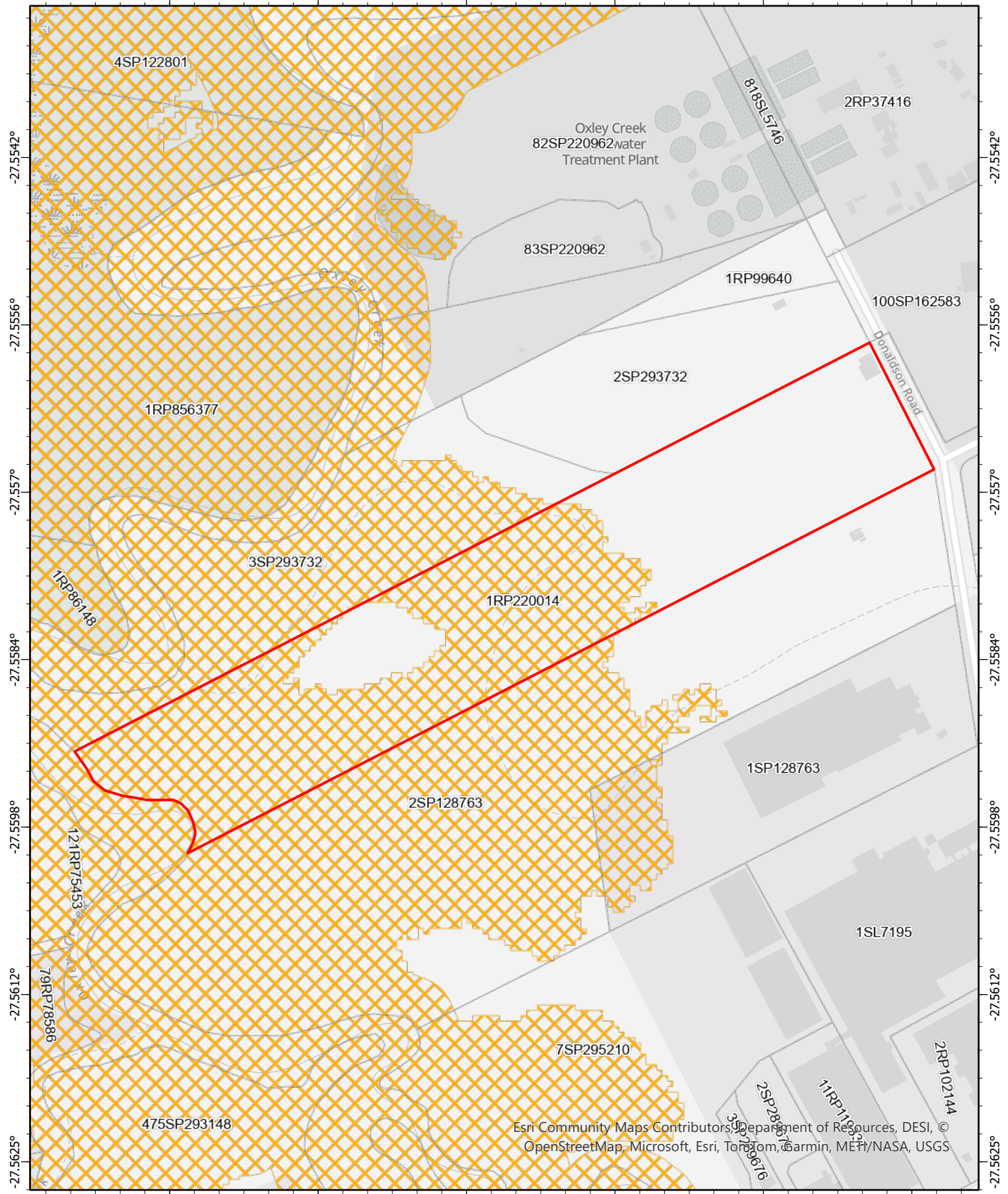
Disclaimer This map has been generated from the information supplied to the Queensland Government for the purposes of the Development Assessment Mapping System. The map generated has been prepared with due care based on the best available information at the time of publication. The State of Queensland holds no responsibility for any errors, inconsistencies or omissions within this document. Any decisions made by other parties based on this document are solely the responsibility of those parties. This information is supplied subject to the full terms and conditions available on the department's website.

Queensland
Government




© The State of Queensland 2026.

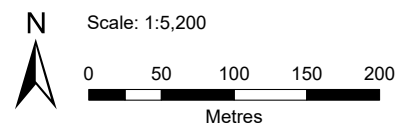
152.9847° 152.9861° 152.9875° 152.9888° 152.9902° 152.9916°



Esri Community Maps Contributors, Department of Resources, DESI, © OpenStreetMap, Microsoft, Esri, TomTom, Garmin, MET/NASA, USGS

 Coastal area - erosion prone area

Date: 05/01/2026

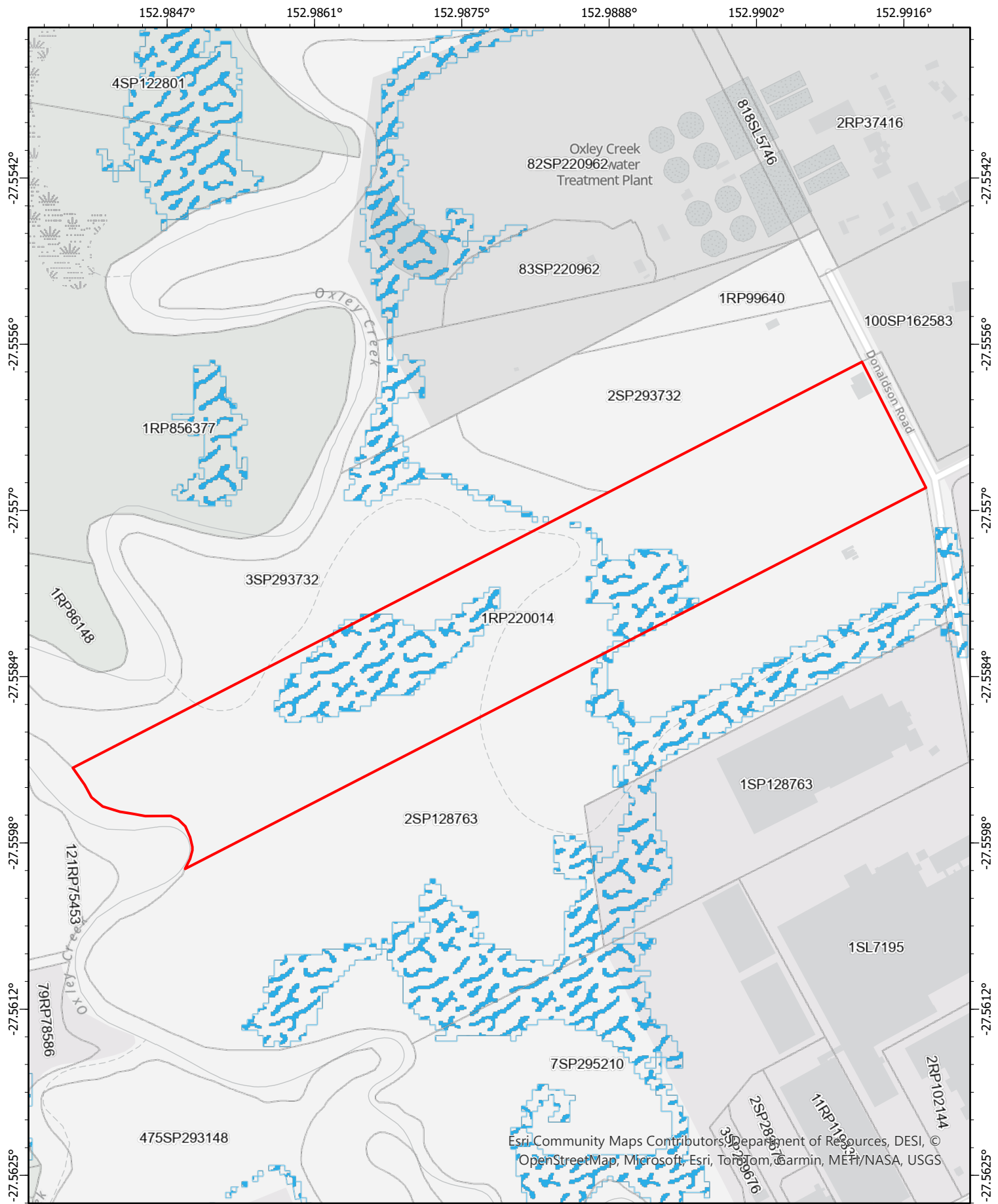



Disclaimer This map has been generated from the information supplied to the Queensland Government for the purposes of the Development Assessment Mapping System. The map generated has been prepared with due care based on the best available information at the time of publication. The State of Queensland holds no responsibility for any errors, inconsistencies or omissions within this document. Any decisions made by other parties based on this document are solely the responsibility of those parties. This information is supplied subject to the full terms and conditions available on the department's website.

Queensland Government

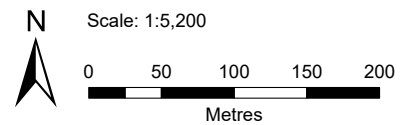


© The State of Queensland 2026.



 Coastal area - medium storm tide inundation area

Date: 05/01/2026

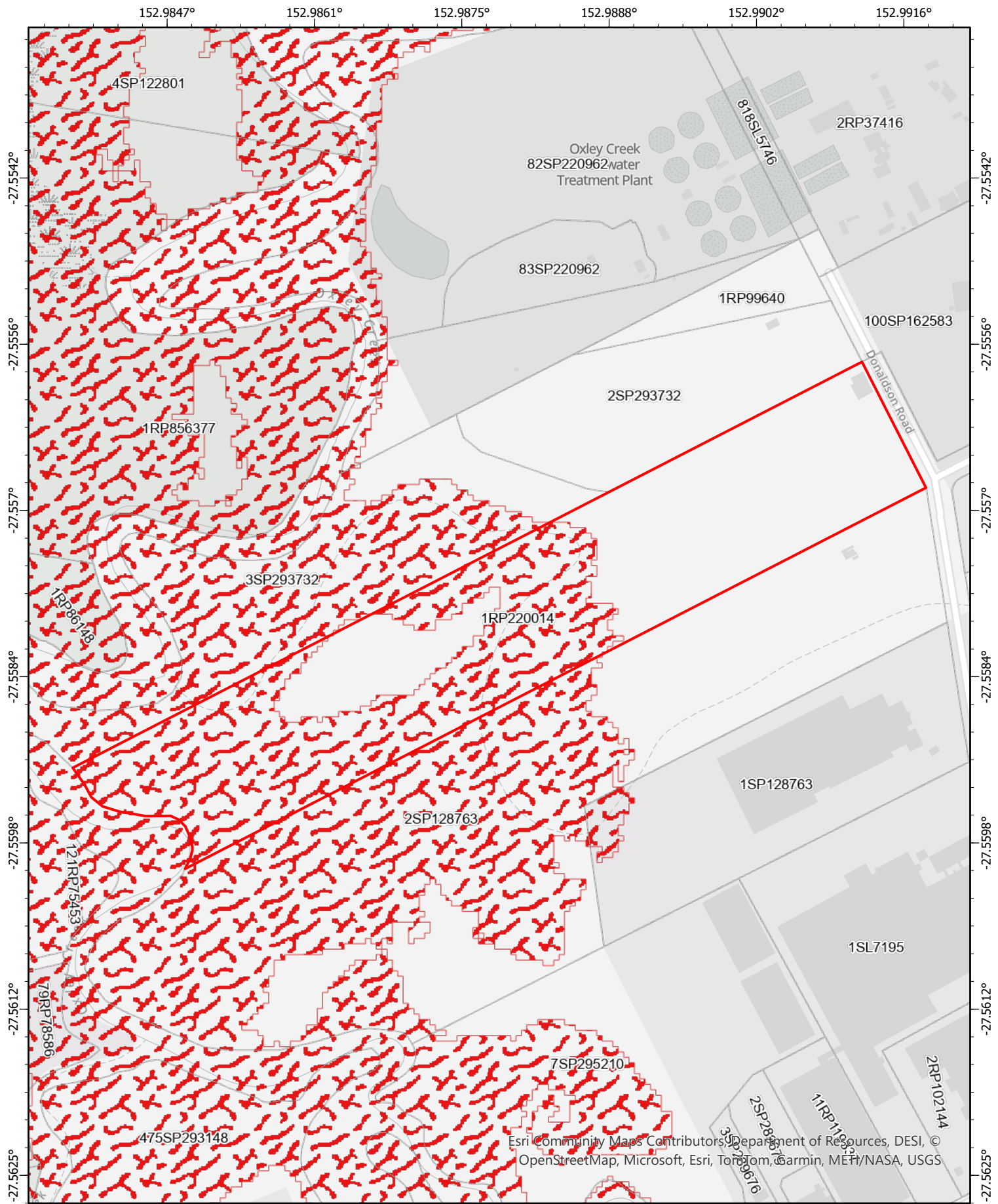



Disclaimer This map has been generated from the information supplied to the Queensland Government for the purposes of the Development Assessment Mapping System. The map generated has been prepared with due care based on the best available information at the time of publication. The State of Queensland holds no responsibility for any errors, inconsistencies or omissions within this document. Any decisions made by other parties based on this document are solely the responsibility of those parties. This information is supplied subject to the full terms and conditions available on the department's website.

Queensland
Government

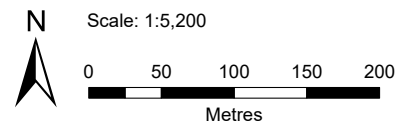


© The State of Queensland 2026.



 Coastal area - high storm tide inundation area

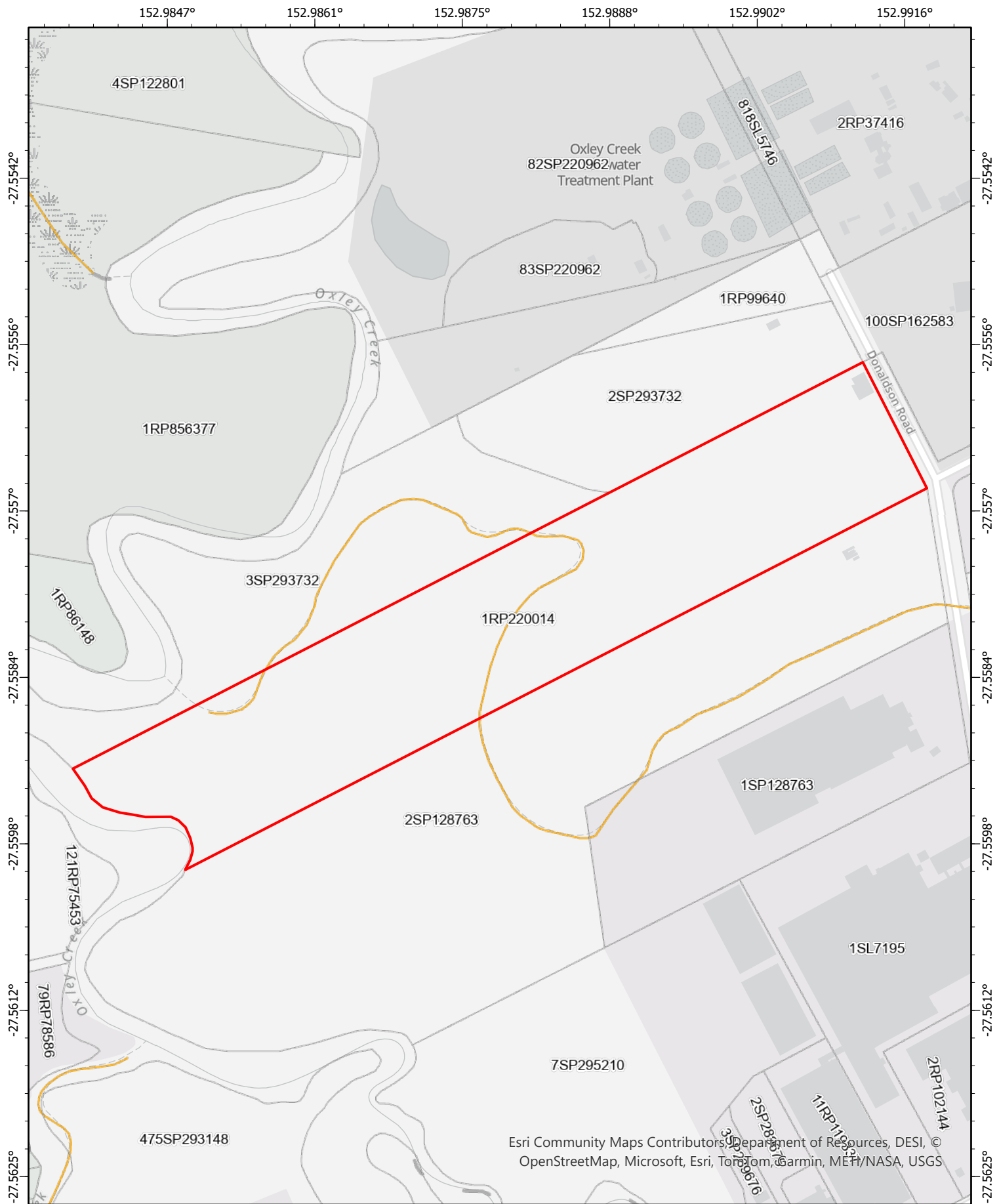
Date: 05/01/2026



Disclaimer This map has been generated from the information supplied to the Queensland Government for the purposes of the Development Assessment Mapping System. The map generated has been prepared with due care based on the best available information at the time of publication. The State of Queensland holds no responsibility for any errors, inconsistencies or omissions within this document. Any decisions made by other parties based on this document are solely the responsibility of those parties. This information is supplied subject to the full terms and conditions available on the department's website.

Queensland
Government





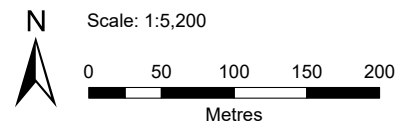
Queensland waterways for waterway barrier works

Risk of impact

- Moderate
- Major (tidal)

Disclaimer This map has been generated from the information supplied to the Queensland Government for the purposes of the Development Assessment Mapping System. The map generated has been prepared with due care based on the best available information at the time of publication. The State of Queensland holds no responsibility for any errors, inconsistencies or omissions within this document. Any decisions made by other parties based on this document are solely the responsibility of those parties. This information is supplied subject to the full terms and conditions available on the department's website.

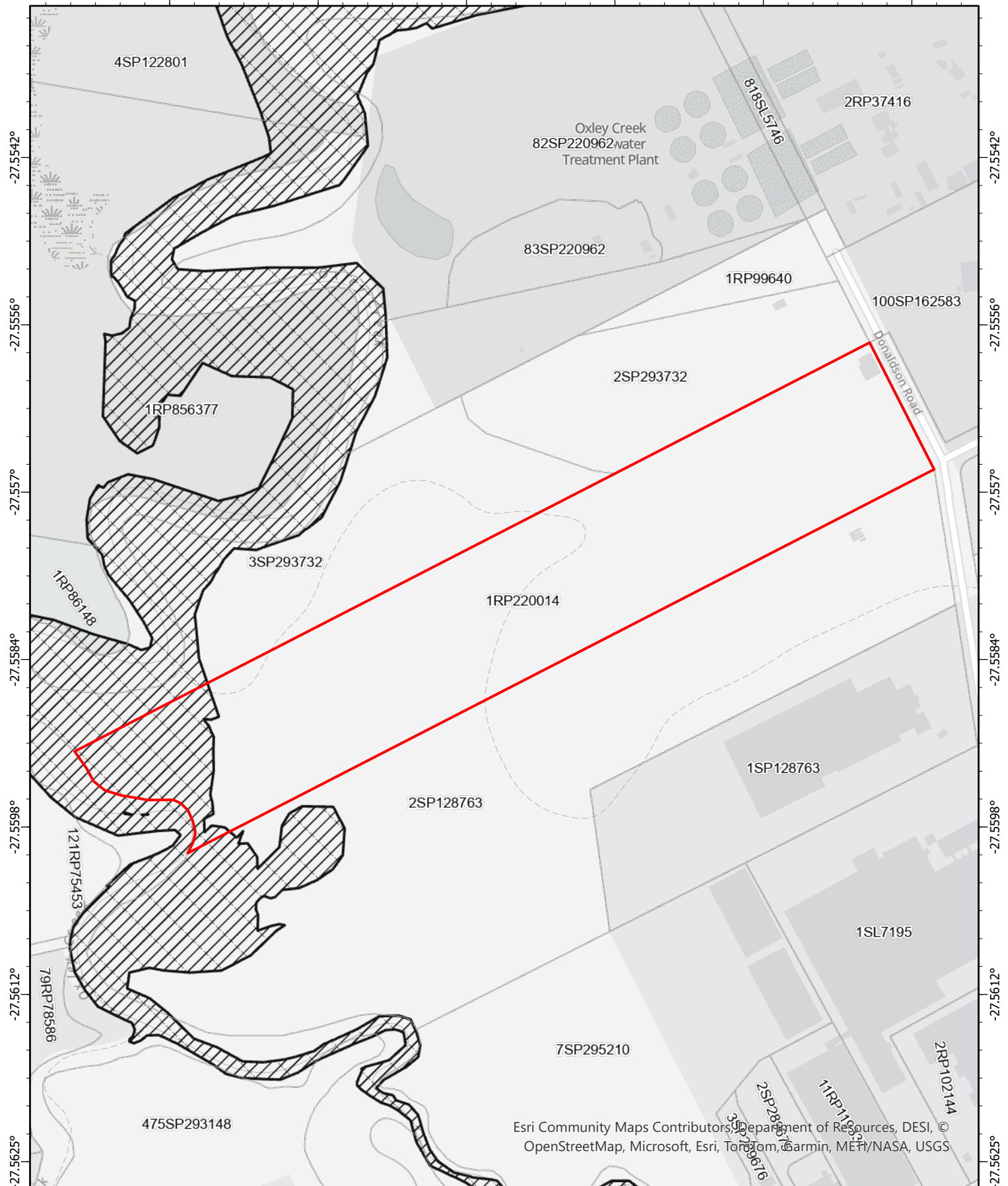
Date: 05/01/2026



Queensland Government



152.9847° 152.9861° 152.9875° 152.9888° 152.9902° 152.9916°



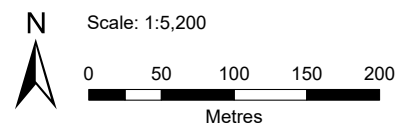
-27.5542°
-27.5556°
-27.557°
-27.5584°
-27.5598°
-27.5612°
-27.5625°

-27.5542°
-27.5556°
-27.557°
-27.5584°
-27.5598°
-27.5612°
-27.5625°

Esri Community Maps Contributors, Department of Resources, DESI, ©
OpenStreetMap, Microsoft, Esri, TomTom, Garmin, MET/NASA, USGS

Date: 05/01/2026

Major (tidal)



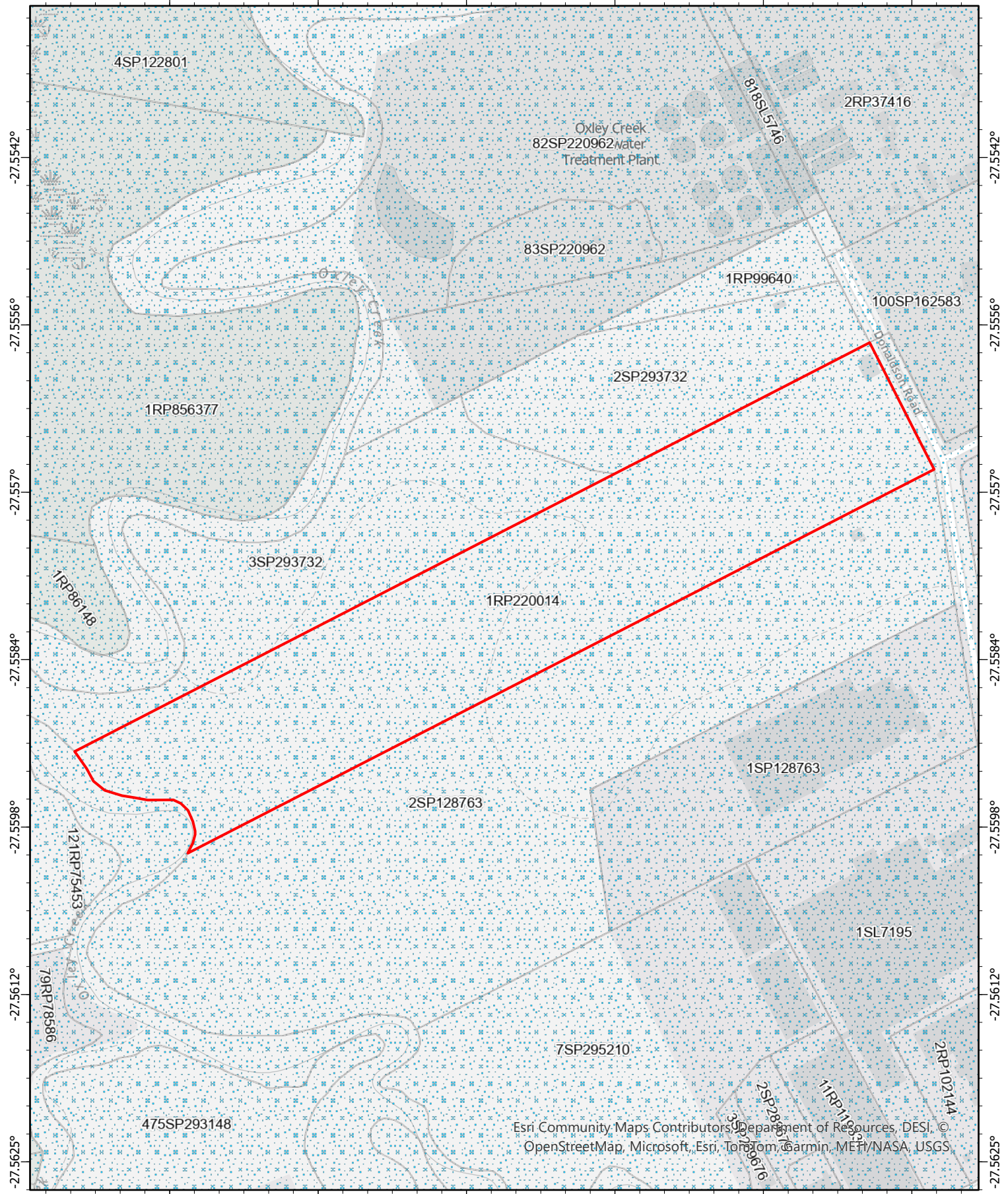
Disclaimer This map has been generated from the information supplied to the Queensland Government for the purposes of the Development Assessment Mapping System. The map generated has been prepared with due care based on the best available information at the time of publication. The State of Queensland holds no responsibility for any errors, inconsistencies or omissions within this document. Any decisions made by other parties based on this document are solely the responsibility of those parties. This information is supplied subject to the full terms and conditions available on the department's website.

Queensland
Government

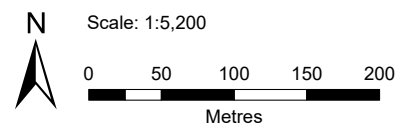


© The State of Queensland 2026.

152.9847° 152.9861° 152.9875° 152.9888° 152.9902° 152.9916°



Water resource planning area boundaries



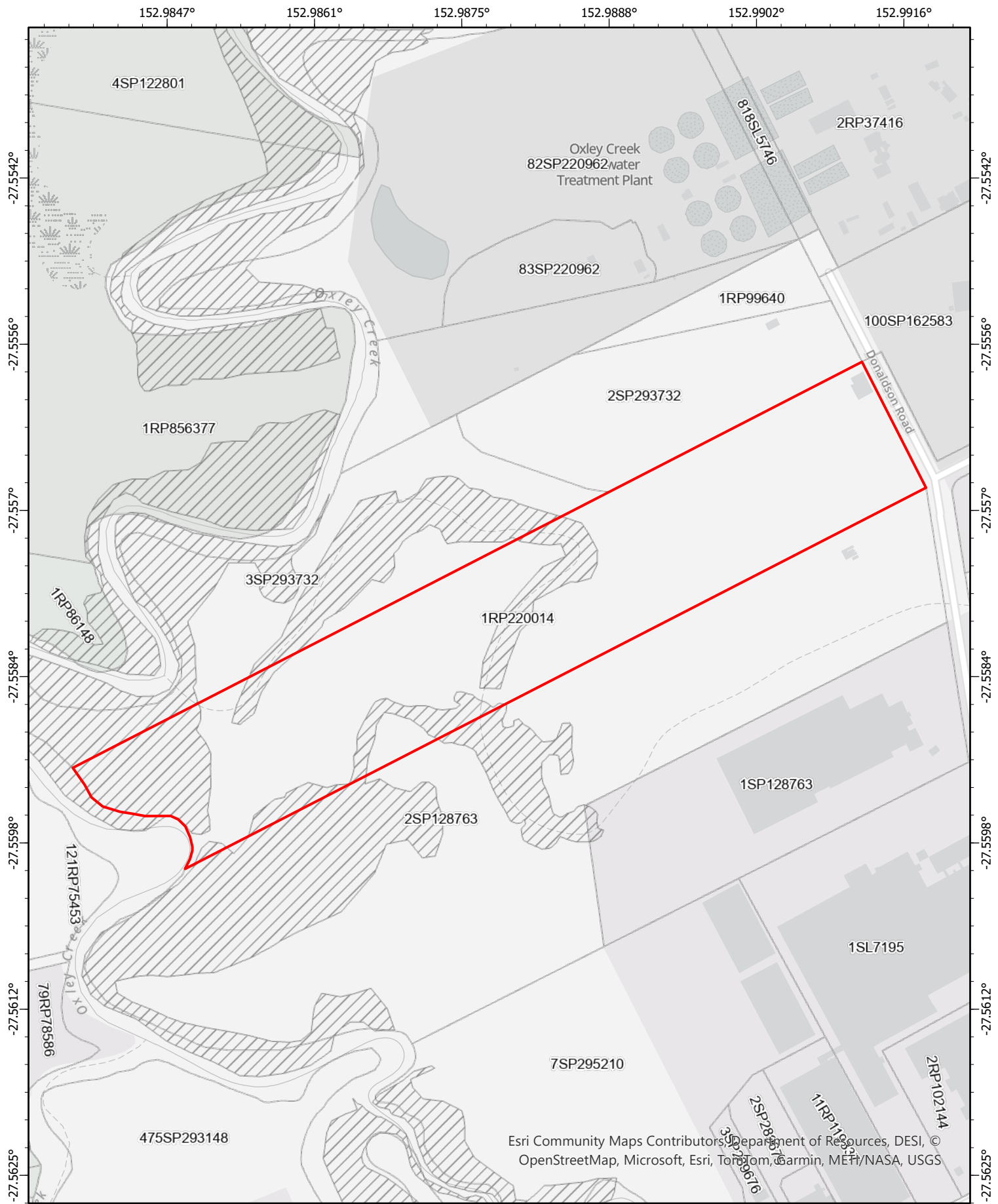
Date: 05/01/2026

Disclaimer This map has been generated from the information supplied to the Queensland Government for the purposes of the Development Assessment Mapping System. The map generated has been prepared with due care based on the best available information at the time of publication. The State of Queensland holds no responsibility for any errors, inconsistencies or omissions within this document. Any decisions made by other parties based on this document are solely the responsibility of those parties. This information is supplied subject to the full terms and conditions available on the department's website.

Queensland Government



© The State of Queensland 2026.



Regulated vegetation management map (Category A and B extract)

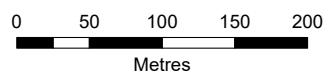
Category B on the regulated vegetation management map



Date: 05/01/2026



Scale: 1:5,200



Queensland Government




Disclaimer This map has been generated from the information supplied to the Queensland Government for the purposes of the Development Assessment Mapping System. The map generated has been prepared with due care based on the best available information at the time of publication. The State of Queensland holds no responsibility for any errors, inconsistencies or omissions within this document. Any decisions made by other parties based on this document are solely the responsibility of those parties. This information is supplied subject to the full terms and conditions available on the department's website.

152.9847° 152.9861° 152.9875° 152.9888° 152.9902° 152.9916°

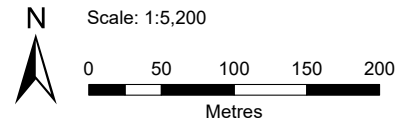
-27.5542°
-27.5556°
-27.5570°
-27.5584°
-27.5598°
-27.5612°
-27.5625°

-27.5542°
-27.5556°
-27.5570°
-27.5584°
-27.5598°
-27.5612°
-27.5625°



 Core koala habitat area

Date: 05/01/2026

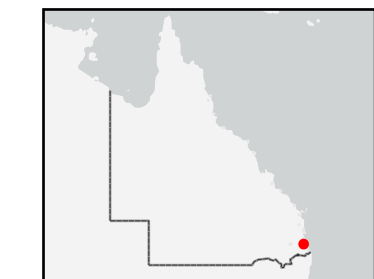
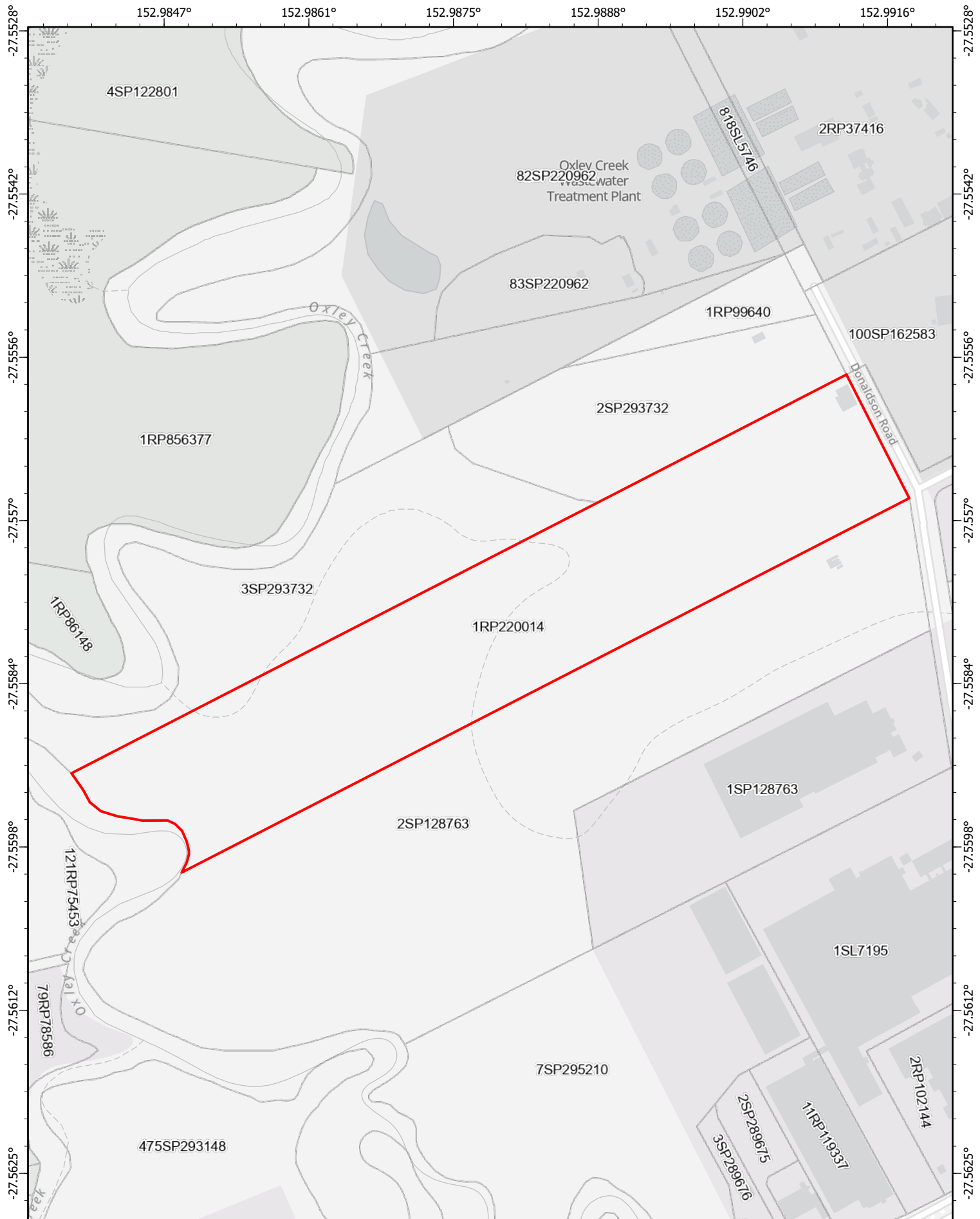


Disclaimer This map has been generated from the information supplied to the Queensland Government for the purposes of the Development Assessment Mapping System. The map generated has been prepared with due care based on the best available information at the time of publication. The State of Queensland holds no responsibility for any errors, inconsistencies or omissions within this document. Any decisions made by other parties based on this document are solely the responsibility of those parties. This information is supplied subject to the full terms and conditions available on the department's website.

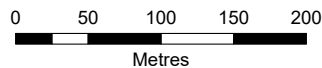
Queensland Government



© The State of Queensland 2026.



Scale: 1:5,200



Date: 05/01/2026

Disclaimer This map has been prepared with due care based on the best available information at the time of publication. However, the State of Queensland (acting through the department) makes no representations, either express or implied, that the map is free from errors, inconsistencies or omissions. Reliance on information contained in this map is the sole responsibility of the user. The State disclaims responsibility for any loss, damage or inconvenience caused as a result of reliance on information or data contained in this map

Queensland
Government

