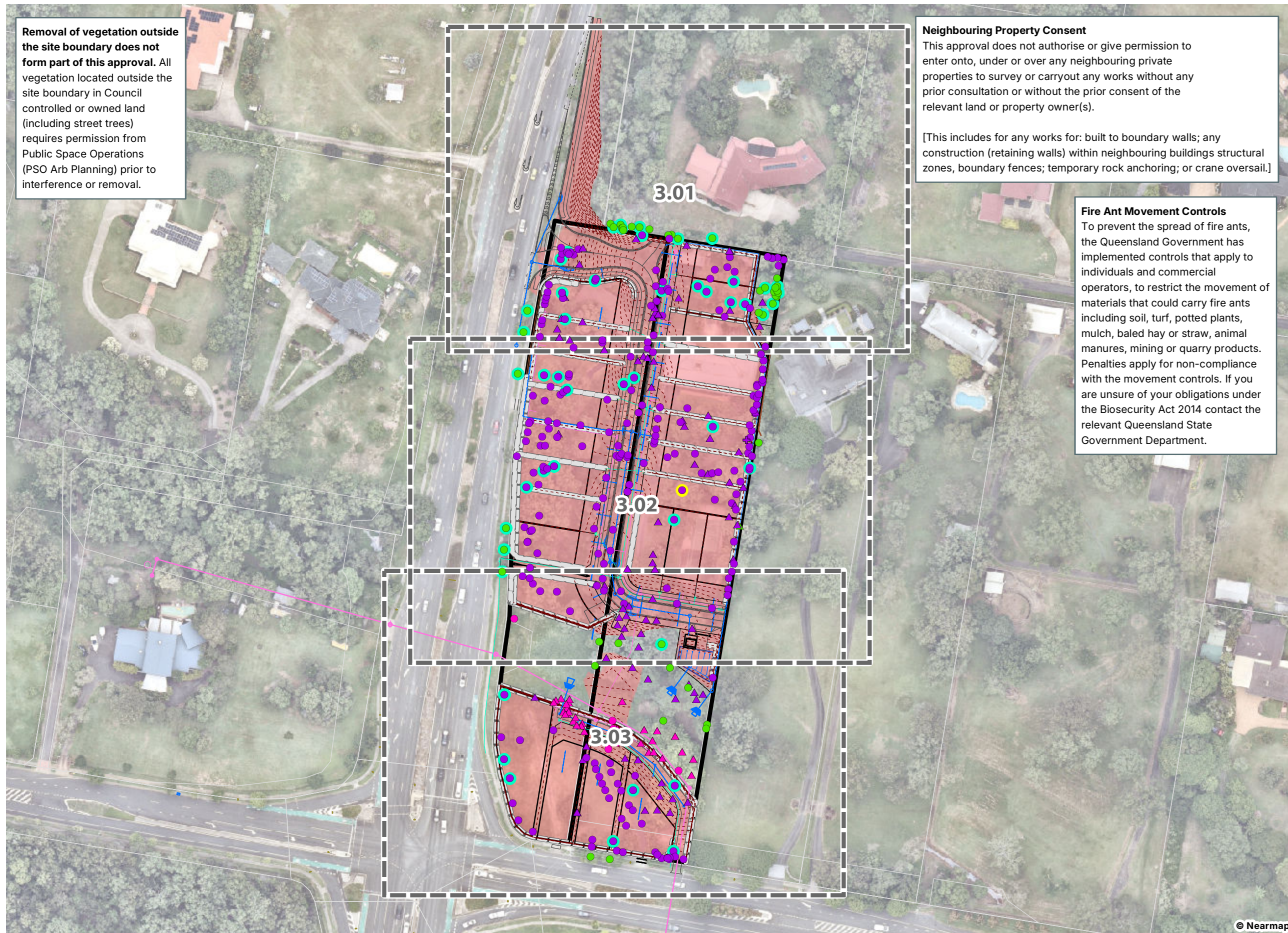


# 3.00 TREE RETENTION PLAN



**Removal of vegetation outside the site boundary does not form part of this approval.** All vegetation located outside the site boundary in Council controlled or owned land (including street trees) requires permission from Public Space Operations (PSO Arb Planning) prior to interference or removal.

**Neighbouring Property Consent**  
 This approval does not authorise or give permission to enter onto, under or over any neighbouring private properties to survey or carryout any works without any prior consultation or without the prior consent of the relevant land or property owner(s).  
 [This includes for any works for: built to boundary walls; any construction (retaining walls) within neighbouring buildings structural zones, boundary fences; temporary rock anchoring; or crane oversail.]

**Fire Ant Movement Controls**  
 To prevent the spread of fire ants, the Queensland Government has implemented controls that apply to individuals and commercial operators, to restrict the movement of materials that could carry fire ants including soil, turf, potted plants, mulch, baled hay or straw, animal manures, mining or quarry products. Penalties apply for non-compliance with the movement controls. If you are unsure of your obligations under the Biosecurity Act 2014 contact the relevant Queensland State Government Department.

Notes:  
 The information on this plan is not suitable for any purpose other than the expressed use of the Client. Property dimensions, areas, numbers of lots and contours and other physical features may need verification if the development application is approved and development proceeds, and may change when a full survey is undertaken or in order to comply with development approval conditions. No reliance should be placed on the information on this plan for detailed design or for any financial dealings involving the land. Saunders Havill therefore disclaims any liability for any loss or damage whatsoever or howsoever incurred, arising from any party using or relying upon this plan for any purpose other than as a document prepared for the sole purpose of accompanying a development application and which may be subject to alteration beyond the control of Saunders Havill. Unless a development approval states otherwise, this is not an approved plan.  
 Layer Sources  
 © State of Queensland (Department of Resources) 2026.  
 Updated data available at <http://qldspatialinformation.qld.gov.au/catalogue/>  
 \* Reproduction of this plan or any part of it without this note being included in full will render the information shown on such reproduction invalid and not suitable for use.

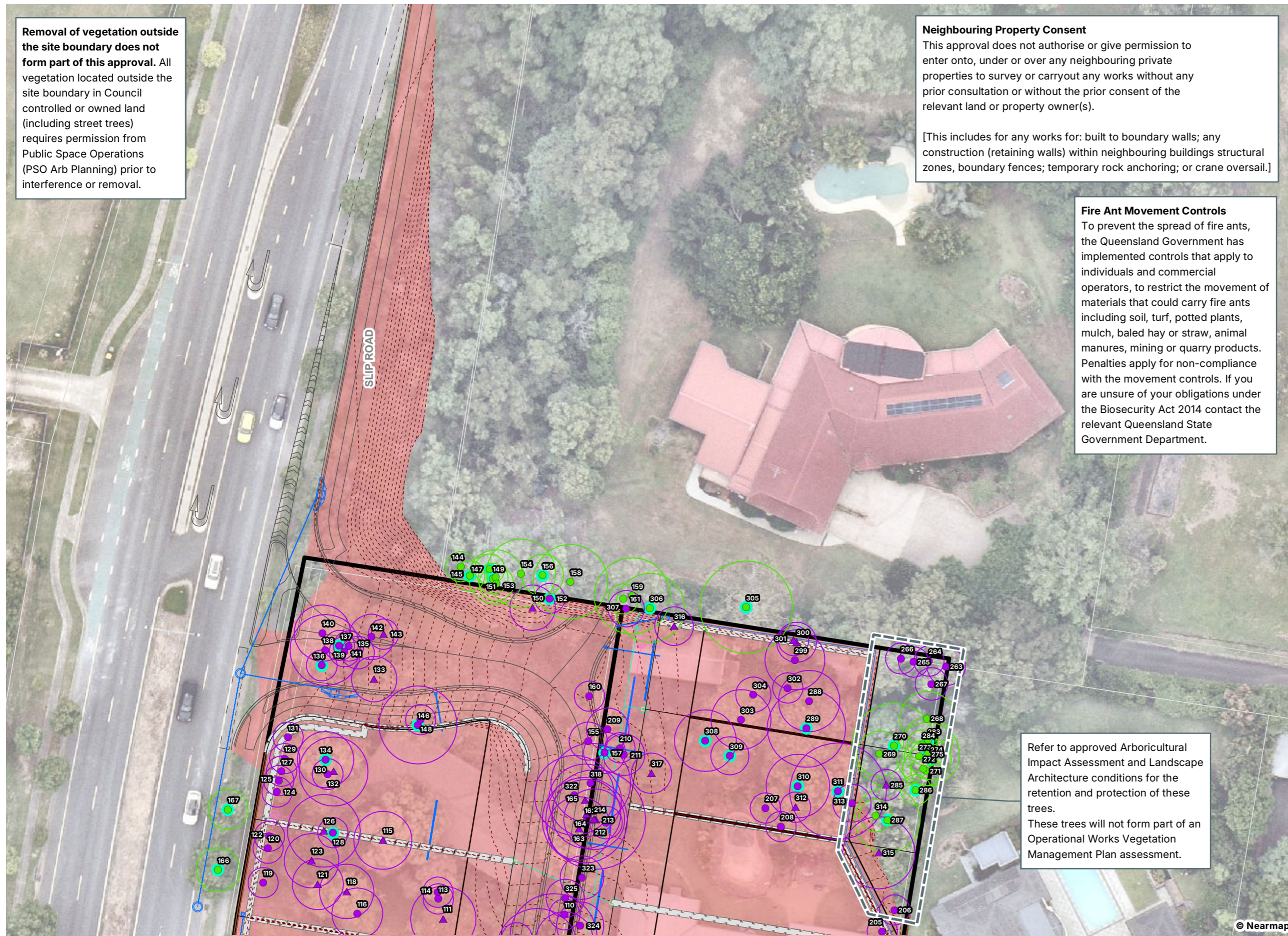
- LEGEND**
- Qld DCDB
  - Survey Accurate Boundary
  - GPS Tree Plot**
  - Native tree to retain as part of this application (identified by engineer)
  - ▲ Non-native tree to retain as part of this application (identified by engineer)
  - Native tree to remove as part of this application
  - ▲ Non-native tree to remove as part of this application
  - + Dead/stag tree to remove as part of this application
  - Native tree to remove as part of this application within drainage corridor (subject to future rehabilitation based on pre-clear RE)
  - ▲ Non-native tree to remove as part of this application within drainage corridor (subject to future rehabilitation based on pre-clear RE)
  - Significant flora species
  - Significant landscape tree
  - Engineering Detail**
  - Proposed Lots
  - Proposed Roads and Paths
  - Retaining Walls
  - Design Contours
  - Drainage Design
  - Electrical Design
  - Sewer Design
  - Water Design
  - Earthworks Cut-Fill

AMENDMENTS				
Issue	Date	Description	Drawn	Checked
F	2/07/2026	Amendments	LS	LF

Scale: 1:1,400 @ A3 | Transverse Mercator | GDA 2020 | Zone 56



# 3.01 TREE RETENTION PLAN



**Removal of vegetation outside the site boundary does not form part of this approval.** All vegetation located outside the site boundary in Council controlled or owned land (including street trees) requires permission from Public Space Operations (PSO Arb Planning) prior to interference or removal.

**Neighbouring Property Consent**  
 This approval does not authorise or give permission to enter onto, under or over any neighbouring private properties to survey or carryout any works without any prior consultation or without the prior consent of the relevant land or property owner(s).  
 [This includes for any works for: built to boundary walls; any construction (retaining walls) within neighbouring buildings structural zones, boundary fences; temporary rock anchoring; or crane oversail.]

**Fire Ant Movement Controls**  
 To prevent the spread of fire ants, the Queensland Government has implemented controls that apply to individuals and commercial operators, to restrict the movement of materials that could carry fire ants including soil, turf, potted plants, mulch, baled hay or straw, animal manures, mining or quarry products. Penalties apply for non-compliance with the movement controls. If you are unsure of your obligations under the Biosecurity Act 2014 contact the relevant Queensland State Government Department.

Refer to approved Arboricultural Impact Assessment and Landscape Architecture conditions for the retention and protection of these trees.  
 These trees will not form part of an Operational Works Vegetation Management Plan assessment.

Notes:  
 The information on this plan is not suitable for any purpose other than the expressed use of the Client. Property dimensions, areas, numbers of lots and contours and other physical features may need verification if the development application is approved and development proceeds, and may change when a full survey is undertaken or in order to comply with development approval conditions. No reliance should be placed on the information on this plan for detailed design or for any financial dealings involving the land. Saunders Havill therefore disclaims any liability for any loss or damage whatsoever or howsoever incurred, arising from any party using or relying upon this plan for any purpose other than as a document prepared for the sole purpose of accompanying a development application and which may be subject to alteration beyond the control of Saunders Havill. Unless a development approval states otherwise, this is not an approved plan.  
 Layer Sources  
 © State of Queensland (Department of Resources) 2026.  
 Updated data available at <http://qldspatialinformation.qld.gov.au/catalogue/>  
 \* Reproduction of this plan or any part of it without this note being included in full will render the information shown on such reproduction invalid and not suitable for use.

**LEGEND**

- Qld DCDB
- Survey Accurate Boundary
- GPS Tree Plot (w/ TPZ)**
- Native tree to retain as part of this application (identified by engineer)
- Non-native tree to retain as part of this application (identified by engineer)
- Native tree to remove as part of this application
- Non-native tree to remove as part of this application
- Dead/stag tree to remove as part of this application
- Native tree to remove as part of this application within drainage corridor (subject to future rehabilitation based on pre-clear RE)
- Non-native tree to remove as part of this application within drainage corridor (subject to future rehabilitation based on pre-clear RE)
- Significant flora species
- Significant landscape tree

**Engineering Detail**

- Proposed Lots
- Proposed Roads and Paths
- Retaining Walls
- Design Contours
- Drainage Design
- Electrical Design
- Sewer Design
- Water Design
- Earthworks Cut-Fill

AMENDMENTS				
Issue	Date	Description	Drawn	Checked
E	2/07/2026	Amendments	LS	LB

Scale: 1:500 @ A3 | Transverse Mercator | GDA 2020 | Zone 56

# 3.02 TREE RETENTION PLAN



Removal of vegetation outside the site boundary does not form part of this approval. All vegetation located outside the site boundary in Council controlled or owned land (including street trees) requires permission from Public Space Operations (PSO Arb Planning) prior to interference or removal.

An Arboricultural Impact Assessment, prepared by a suitably qualified Arborist (minimum AQF level 5) to be submitted with an Operational Works Vegetation Management Plan to support any proposed civil works within the NRZ's of trees to be retained within the Waterway corridor (Lot 900).

All native trees (not significantly impacted by proposed works) must be retained within the waterway corridor (Lot 900). Exotic or declared pest plant species to be removed in accordance with an approved Rehabilitation Plan.

Notes:  
The information on this plan is not suitable for any purpose other than the expressed use of the Client. Property dimensions, areas, numbers of lots and contours and other physical features may need verification if the development application is approved and development proceeds, and may change when a full survey is undertaken or in order to comply with development approval conditions. No reliance should be placed on the information on this plan for detailed design or for any financial dealings involving the land. Saunders Havill therefore disclaims any liability for any loss or damage whatsoever or howsoever incurred, arising from any party using or relying upon this plan for any purpose other than as a document prepared for the sole purpose of accompanying a development application and which may be subject to alteration beyond the control of Saunders Havill. Unless a development approval states otherwise, this is not an approved plan.  
Layer Sources  
© State of Queensland (Department of Resources) 2026.  
Updated data available at <http://qldspatialinformation.qld.gov.au/catalogue/>  
\* Reproduction of this plan or any part of it without this note being included in full will render the information shown on such reproduction invalid and not suitable for use.

**LEGEND**

- Qld DCDB
- Survey Accurate Boundary
- GPS Tree Plot (w/ TPZ)**
  - Native tree to retain as part of this application (identified by engineer)
  - Non-native tree to retain as part of this application (identified by engineer)
  - Native tree to remove as part of this application
  - Non-native tree to remove as part of this application
  - Dead/stag tree to remove as part of this application
  - Native tree to remove as part of this application within drainage corridor (subject to future rehabilitation based on pre-clear RE)
  - Non-native tree to remove as part of this application within drainage corridor (subject to future rehabilitation based on pre-clear RE)
  - Significant flora species
  - Significant landscape tree
- Engineering Detail**
  - Proposed Lots
  - Proposed Roads and Paths
  - Retaining Walls
  - Design Contours
  - Drainage Design
  - Electrical Design
  - Sewer Design
  - Water Design
  - Earthworks Cut-Fill

**AMENDMENTS**

Issue	Date	Description	Drawn LS	Checked LB
E	2/07/2026	Amendments		

Scale: 0 5 10 15 20 m  
1:500 @ A3 | Transverse Mercator | GDA 2020 | Zone 56

# 3.03 TREE RETENTION PLAN



Removal of vegetation outside the site boundary does not form part of this approval. All vegetation located outside the site boundary in Council controlled or owned land (including street trees) requires permission from Public Space Operations (PSO Arb Planning) prior to interference or removal.

An Arboricultural Impact Assessment, prepared by a suitably qualified Arborist (minimum AQF level 5) to be submitted with an Operational Works Vegetation Management Plan to support any proposed civil works within the NRZ's of trees to be retained within the Waterway corridor (Lot 900).

All native trees (not significantly impacted by proposed works) must be retained within the waterway corridor (Lot 900). Exotic or declared pest plant species to be removed in accordance with an approved Rehabilitation Plan.

**Notes:**  
The information on this plan is not suitable for any purpose other than the expressed use of the Client. Property dimensions, areas, numbers of lots and contours and other physical features may need verification if the development application is approved and development proceeds, and may change when a full survey is undertaken or in order to comply with development approval conditions. No reliance should be placed on the information on this plan for detailed design or for any financial dealings involving the land. Saunders Havill therefore disclaims any liability for any loss or damage whatsoever or howsoever incurred, arising from any party using or relying upon this plan for any purpose other than as a document prepared for the sole purpose of accompanying a development application and which may be subject to alteration beyond the control of Saunders Havill. Unless a development approval states otherwise, this is not an approved plan.  
Layer Sources  
© State of Queensland (Department of Resources) 2026.  
Updated data available at <http://qldspatialinformation.qld.gov.au/catalogue/>  
\* Reproduction of this plan or any part of it without this note being included in full will render the information shown on such reproduction invalid and not suitable for use.

**LEGEND**

- Qld DCDB
- Survey Accurate Boundary
- GPS Tree Plot (w/ TPZ)**
  - Native tree to retain as part of this application (identified by engineer)
  - Non-native tree to retain as part of this application (identified by engineer)
  - Native tree to remove as part of this application
  - Non-native tree to remove as part of this application
  - Dead/stag tree to remove as part of this application
  - Native tree to remove as part of this application within drainage corridor (subject to future rehabilitation based on pre-clear RE)
  - Non-native tree to remove as part of this application within drainage corridor (subject to future rehabilitation based on pre-clear RE)
  - Significant flora species
  - Significant landscape tree
- Engineering Detail**
  - Proposed Lots
  - Proposed Roads and Paths
  - Retaining Walls
  - Design Contours
  - Drainage Design
  - Electrical Design
  - Sewer Design
  - Water Design
  - Earthworks Cut-Fill

**AMENDMENTS**

Issue	Date	Description	Drawn LS	Checked LB
E	2/07/2026	Amendments		

Scale: 1:500 @ A3 | Transverse Mercator | GDA 2020 | Zone 56



Where this tree schedule conflicts with Tree Retention Plan drawings, tree retention shown on drawing prevails.

Tree Schedule - 12296  
Beams Road, Bridgeman Downs (Turrissproperty Pty Ltd)  
Date: 2026/07/01

Specimen Details										Canopy Condition Details						Trunk Condition Details					Fauna Details and Habitat Value						Additional Details				
Tree ID	Botanical Name	Common Name	Trunk DBH (mm)	Additional Trunks DBH (mm)	Total DBH (mm) [AS 4970-2025]	Trunk Circumference (cm) [AS 4970-2025]	Height (m)	Spread (m)	Tree Protection Zone (m)	Structural Root Zone (m)	Canopy Form	Spreading	Thinning	Die-Back	Epicormic Growth	Lopped	Canopy Health	Leaning	Vines	Trunk Damage	Fire Damage	Trunk Health	Scats	Scratches	Hollows	Nest	Termite Nest	Habitat Value	Retention	Additional Notes	
1	<i>Araucaria cunninghamii</i>	Hoop Pine	210		210	66	16.0	5.0	2.5	1.7	Regular	-	-	-	-	-	Typical	-	-	-	-	Typical	-	-	-	-	-	-	Remove		
2	<i>Dimocarpus longan</i>	Longan	240		240	75	7.0	6.0	2.9	1.8	Regular	-	-	-	-	-	Typical	-	-	-	-	Typical	-	-	-	-	-	-	Remove		
3	<i>Araucaria cunninghamii</i>	Hoop Pine	270		270	85	16.0	6.0	3.2	1.9	Regular	-	-	-	-	-	Typical	-	-	-	-	Typical	-	-	-	-	-	-	Remove		
4	<i>Araucaria cunninghamii</i>	Hoop Pine	150		150	47	14.0	4.0	2.0	1.5	Regular	-	-	-	-	-	Typical	-	-	-	-	Typical	-	-	-	-	-	-	Remove		
5	<i>Lophostemon confertus</i>	Brush Box	130		130	41	6.0	4.0	2.0	1.4	Regular	-	-	-	-	-	Typical	-	-	-	-	Typical	-	-	-	-	-	-	Remove		
6	<i>Lophostemon confertus</i>	Brush Box	140		140	44	6.0	4.0	2.0	1.4	Regular	-	-	-	-	-	Typical	-	-	-	-	Typical	-	-	-	-	-	-	Remove		
7	<i>Murraya paniculata</i>	Mock Orange	150		150	47	8.0	6.0	2.0	1.5	Regular	-	-	-	-	-	Typical	-	-	-	-	Typical	-	-	-	-	-	-	Remove		
8	<i>Acacia disparrima</i>	Hickory Wattle	140		140	44	5.0	4.0	2.0	1.4	Regular	-	-	-	-	-	Typical	-	-	-	-	Typical	-	-	-	-	-	-	Remove		
9	<i>Glochidion ferdinandii</i>	Cheese Tree	130		130	41	9.0	6.0	2.0	1.4	Regular	-	-	-	-	-	Typical	-	-	-	-	Typical	-	-	-	-	-	-	Remove		
10	<i>Lophostemon grandiflorus</i>	Northern Swamp Box	140		140	44	6.0	4.0	2.0	1.4	Regular	-	-	-	-	-	Typical	-	-	-	-	Typical	-	-	-	-	-	-	Remove		
11	<i>Acacia leiocalyx</i>	Early-flowering Black Wattle	160		160	50	9.0	6.0	2.0	1.5	Regular	-	-	-	-	-	Typical	Minor	-	-	-	-	Typical	-	-	-	-	-	-	Remove	
12	<i>Pinus elliotii</i>	Slash Pine	320		320	101	10.0	5.0	3.8	2.1	Regular	-	-	-	-	-	Typical	-	-	-	-	Typical	-	-	-	-	-	-	Remove		
13	<i>Lophostemon confertus</i>	Brush Box	240		240	75	10.0	6.0	2.9	1.8	Regular	-	-	-	-	-	Typical	-	-	-	-	Typical	-	-	-	-	-	-	Remove		
14	<i>Pinus elliotii</i>	Slash Pine	200		200	63	18.0	5.0	2.4	1.7	Regular	-	-	-	-	-	Typical	-	-	-	-	Typical	-	-	-	-	-	-	Remove (Subject to Future Rehab)		
15	<i>Pinus elliotii</i>	Slash Pine	230		230	72	18.0	5.0	2.8	1.8	Regular	-	-	-	-	-	Typical	-	-	-	-	Typical	-	-	-	-	-	-	Remove (Subject to Future Rehab)		
16	<i>Lophostemon suaveolens</i>	Swamp Box	180		180	57	11.0	5.0	2.2	1.6	Regular	-	-	-	-	-	Typical	-	-	-	-	Typical	-	-	-	-	-	-	Retain		
17	<i>Pinus elliotii</i>	Slash Pine	230		230	72	18.0	5.0	2.8	1.8	Regular	-	-	-	-	-	Typical	-	-	-	-	Typical	-	-	-	-	-	-	Remove (Subject to Future Rehab)		
18	<i>Flindersia australis</i>	Crow's Ash	150		150	47	7.0	4.0	2.0	1.5	Regular	-	-	-	-	-	Typical	-	-	-	-	Typical	-	-	-	-	-	-	Remove (Subject to Future Rehab)		
19	<i>Pinus elliotii</i>	Slash Pine	190		190	60	17.0	5.0	2.3	1.6	Regular	-	-	-	-	-	Typical	-	-	-	-	Typical	-	-	-	-	-	-	Remove (Subject to Future Rehab)		
20	<i>Eucalyptus siderophloia</i>	Northern Grey Ironbark	465		465	146	17.0	10.0	5.6	2.4	Regular	-	-	-	-	-	Typical	-	-	-	-	Typical	-	-	-	-	-	-	Remove		
21	<i>Pinus elliotii</i>	Slash Pine	260		260	82	18.0	6.0	3.1	1.9	Regular	-	-	-	-	-	Typical	-	Native	-	-	Typical	-	-	-	-	-	-	Remove (Subject to Future Rehab)		
22	<i>Pinus elliotii</i>	Slash Pine	190		190	60	16.0	5.0	2.3	1.6	Regular	-	-	-	-	-	Typical	-	-	-	-	Typical	-	-	-	-	-	-	Remove (Subject to Future Rehab)		
23	<i>Eucalyptus siderophloia</i>	Northern Grey Ironbark	420		420	132	14.0	8.0	5.0	2.3	Regular	-	-	-	-	-	Typical	-	-	-	-	Typical	-	-	Present	-	Present	-	Remove	Hollow in Termite Nest	
24	<i>Pinus elliotii</i>	Slash Pine	160		160	50	14.0	5.0	2.0	1.5	Regular	-	-	-	-	-	Typical	-	-	-	-	Typical	-	-	-	-	-	-	Remove (Subject to Future Rehab)		
25	<i>Acacia concurrens</i>	Black Wattle	140		140	44	6.0	3.0	2.0	1.4	Regular	-	-	-	-	-	Typical	-	-	-	-	Typical	-	-	-	-	-	-	Remove		
26	<i>Pinus elliotii</i>	Slash Pine	270		270	85	18.0	6.0	3.2	1.9	Regular	-	-	-	-	-	Typical	-	-	-	-	Typical	-	-	-	-	-	-	Remove (Subject to Future Rehab)		
27	<i>Pinus elliotii</i>	Slash Pine	260		260	82	20.0	7.0	3.1	1.9	Regular	-	-	-	-	-	Typical	-	Native	-	-	Typical	-	-	-	-	-	-	Remove (Subject to Future Rehab)		
28	<i>Pinus elliotii</i>	Slash Pine	160		160	50	16.0	5.0	2.0	1.5	Regular	-	-	-	-	-	Typical	-	-	-	-	Typical	-	-	-	-	-	-	Remove (Subject to Future Rehab)		
29	<i>Pinus elliotii</i>	Slash Pine	110		110	35	14.0	5.0	2.0	1.3	Regular	-	-	-	-	-	Typical	-	-	-	-	Typical	-	-	-	-	-	-	Remove (Subject to Future Rehab)		
30	<i>Pinus elliotii</i>	Slash Pine	510		510	160	19.0	10.0	6.1	2.5	Regular	-	-	-	-	-	Typical	-	-	-	-	Typical	-	-	-	-	-	-	Remove		
31	<i>Pinus elliotii</i>	Slash Pine	260		260	82	20.0	6.0	3.1	1.9	Regular	-	-	-	-	-	Typical	-	Native	-	-	Typical	-	-	-	-	-	-	Remove (Subject to Future Rehab)		
32	<i>Pinus elliotii</i>	Slash Pine	200		200	63	18.0	6.0	2.4	1.7	Regular	-	-	-	-	-	Typical	-	-	-	-	Typical	-	-	-	-	-	-	Remove (Subject to Future Rehab)		
33	<i>Melaleuca quinquenervia</i>	Broad-leaved Paperbark	640		640	201	16.0	10.0	7.7	2.7	Regular	-	-	-	-	-	Typical	-	-	-	-	Typical	-	-	-	-	-	-	Remove		
34	<i>Pinus elliotii</i>	Slash Pine	120		120	38	16.0	5.0	2.0	1.4	Regular	-	-	-	-	-	Typical	-	-	-	-	Typical	-	-	-	-	-	-	Remove (Subject to Future Rehab)		
35	<i>Pinus elliotii</i>	Slash Pine	130		130	41	16.0	5.0	2.0	1.4	Regular	-	-	-	-	-	Typical	-	-	-	-	Typical	-	-	-	-	-	-	Remove (Subject to Future Rehab)		
36	<i>Pinus elliotii</i>	Slash Pine	445		445	140	18.0	8.0	5.3	2.4	Regular	-	-	-	-	-	Typical	-	-	-	-	Typical	-	-	-	-	-	-	Remove		
37	<i>Pinus elliotii</i>	Slash Pine	250		250	79	18.0	6.0	3.0	1.8	Regular	-	-	-	-	-	Typical	-	-	-	-	Typical	-	-	-	-	-	-	Remove (Subject to Future Rehab)		
38	<i>Acacia concurrens</i>	Black Wattle	190		190	60	6.0	4.0	2.3	1.6	Regular	-	-	-	-	-	Typical	-	-	-	-	Typical	-	-	-	-	-	-	Remove		
39	<i>Pinus elliotii</i>	Slash Pine	200		200	63	20.0	6.0	2.4	1.7	Regular	-	-	-	-	-	Typical	-	-	-	-	Typical	-	-	-	-	-	-	Remove (Subject to Future Rehab)		
40	<i>Lophostemon suaveolens</i>	Swamp Box	385		385	121	8.0	5.0	4.6	2.2	Regular	-	-	-	-	-	Typical	-	-	-	-	Typical	-	-	-	-	-	-	Remove		
41	<i>Melaleuca quinquenervia</i>	Broad-leaved Paperbark	290		290	91	6.0	3.0	3.5	2.0	Regular	-	-	-	-	-	Typical	-	-	-	-	Typical	-	-	-	-	-	-	Remove		
42	<i>Lophostemon suaveolens</i>	Swamp Box	120		120	38	8.0	3.0	2.0	1.4	Regular	-	-	-	-	Lopped	Typical	-	-	-	-	Typical	-	-	-	-	-	-	Remove		
43	<i>Grevillea robusta</i>	Silky Oak	275		275	86	9.0	4.0	3.3	1.9	Regular	-	-	-	-	-	Typical	-	-	-	-	Typical	-	-	-	-	-	-	Remove		
44	<i>Lophostemon confertus</i>	Brush Box	190		190	60	11.0	5.0	2.3	1.6	Regular	-	-	-	-	-	Typical	-	-	-	-	Typical	-	-	-	-	-	-	Retain		
45	<i>Acacia leiocalyx</i>	Early-flowering Black Wattle	120	80	144	45	6.0	3.0	2.0	1.5	Regular	-	-	-	-	-	Typical	Minor	-	-	-	-	Typical	-	-	-	-	-	-	Remove	
46	<i>Lophostemon suaveolens</i>	Swamp Box	100		100	31	5.0	2.0	2.0	1.3	Regular	-	-	-	-	-	Typical	-	-	-	-	Typical	-	-	-	-	-	-	Remove		
47	<i>Acacia disparrima</i>	Hickory Wattle	160		160	50	5.0	4.0	2.0	1.5	Regular	-	-	-	-	-	Typical	-	-	-	-	Typical	-	-	-	-	-	-	Remove		
48	<i>Acacia leiocalyx</i>	Early-flowering Black Wattle	100		100	31	5.0	2.0	2.0	1.3	Regular	-	-	-	-	-	Typical	-	-	-	-	Typical	-	-	-	-	-	-	Remove		
49	<i>Acacia leiocalyx</i>	Early-flowering Black Wattle	110		110	35	5.0	2.0	2.0	1.3	Regular	-	-	-	-	-	Typical	-	-	-	-	Typical	-	-	-	-	-	-	Remove		
50	<i>Eucalyptus acmenoides</i>	White Mahogany	680		680	214	21.0	12.0	8.2	2.8	Regular	-	-	-	-	-	Typical	-	-	-	-	Typical	-	-	-	-	-	-	Remove		
51	<i>Acacia leiocalyx</i>	Early-flowering Black Wattle	110		110	35	5.0	2.0	2.0	1.3	Regular	-	-	-	-	-	Typical	-	-	-	-	Typical	-	-	-	-	-	-	Remove		
52	<i>Lophostemon suaveolens</i>	Swamp Box	190		190	60	10.0	4.0	2.3	1.6	Regular	-	-	-	-	-	Typical	-	-	-	-	Typical	-	-	-	-	-	-	Remove		
53	<i>Grevillea robusta</i>	Silky Oak	200		200	63	14.0	6.0	2.4	1.7	Regular	-	-	-	-	-	Typical	-	-	-	-	Typical	-	-	-	-	-	-	Remove		
54	<i>Lophostemon confertus</i>	Brush Box	220		220	69	16.0	5.0	2.6	1.8	Regular	-	-	-	-	-	Typical	-	-	-	-	Typical	-	-	-	-	-	-	Retain		



Where this tree schedule conflicts with Tree Retention Plan drawings, tree retention shown on drawing prevails.

Specimen Details											Canopy Condition Details						Trunk Condition Details					Fauna Details and Habitat Value						Additional Details				
Tree ID	Botanical Name	Common Name	Trunk DBH (mm)	Additional Trunks DBH (mm)	Total DBH (mm) [AS 4970-2025]	Trunk Circumference (cm) [AS 4970-2025]	Height (m)	Spread (m)	Tree Protection Zone (m)	Structural Root Zone (m)	Canopy Form	Spreading	Thinning	Die-Back	Epicormic Growth	Lopped	Canopy Health	Leaning	Vines	Trunk Damage	Fire Damage	Trunk Health	Scats	Scratches	Hollows	Nest	Termite Nest	Habitat Value	Retention	Additional Notes		
55	<i>Lophostemon suaveolens</i>	Swamp Box	160		160	50	10.0	4.0	2.0	1.5	Regular	-	-	-	-	-	Typical	-	-	-	-	Typical	-	-	-	-	-	-	-	Remove		
56	<i>Lophostemon suaveolens</i>	Swamp Box	260		260	82	13.0	5.0	3.1	1.9	Regular	-	-	-	-	-	Typical	-	-	-	-	Typical	-	-	-	-	-	-	-	Remove		
57	<i>Lophostemon confertus</i>	Brush Box	160		160	50	16.0	4.0	2.0	1.5	Regular	-	-	-	-	-	Typical	-	-	-	-	Typical	-	-	-	-	-	-	-	Retain		
58	<i>Lophostemon suaveolens</i>	Swamp Box	160		160	50	8.0	4.0	2.0	1.5	Regular	-	-	-	-	-	Typical	-	-	-	-	Typical	-	-	-	-	-	-	-	Remove		
59	<i>Lophostemon suaveolens</i>	Swamp Box	180		180	57	7.0	4.0	2.2	1.6	Regular	-	-	-	-	-	Typical	-	-	-	-	Typical	-	-	-	-	-	-	-	Remove		
60	<i>Lophostemon suaveolens</i>	Swamp Box	180		180	57	9.0	5.0	2.2	1.6	Regular	-	-	-	-	-	Typical	-	-	-	-	Typical	-	-	-	-	-	-	-	Remove		
61	<i>Acacia disparrima</i>	Hickory Wattle	110	100	149	47	5.0	4.0	2.0	1.5	Regular	-	-	-	-	-	Typical	-	-	-	-	Typical	-	-	-	-	-	-	-	Remove		
62	<i>Lophostemon suaveolens</i>	Swamp Box	260		260	82	11.0	7.0	3.1	1.9	Regular	-	-	-	-	-	Typical	-	-	-	-	Typical	-	-	-	-	-	-	-	Remove		
63	<i>Acacia fimbriata</i>	Fringed Wattle	120		120	38	5.0	3.0	2.0	1.4	Regular	-	-	-	-	-	Typical	-	-	-	-	Typical	-	-	-	-	-	-	-	Remove		
64	<i>Eucalyptus propinqua</i>	Small-fruited Grey Gum	410		410	129	22.0	9.0	4.9	2.3	Regular	-	-	-	-	-	Typical	-	-	-	-	Typical	-	New	-	-	-	-	-	Remove		
65	<i>Leptospermum petersonii</i>	Lemon-scented Tea Tree	300		300	94	5.0	5.0	3.6	2.0	Regular	-	-	-	-	-	Typical	-	-	-	-	Typical	-	-	-	-	-	-	-	Remove		
66	<i>Glochidion ferdinandi</i>	Cheese Tree	130		130	41	6.0	3.0	2.0	1.4	Regular	-	-	-	-	-	Typical	-	-	-	-	Typical	-	-	-	-	-	-	-	Remove		
67	<i>Acacia fimbriata</i>	Fringed Wattle	100	60	117	37	5.0	4.0	2.0	1.3	Regular	-	-	-	-	-	Typical	-	-	-	-	Typical	-	-	-	-	-	-	-	Remove		
68	<i>Lophostemon suaveolens</i>	Swamp Box	250		250	79	11.0	6.0	3.0	1.8	Regular	-	-	-	-	-	Typical	-	-	-	-	Typical	-	-	-	-	-	-	-	Remove		
69	<i>Eucalyptus acmenoides</i>	White Mahogany	650		650	204	23.0	11.0	7.8	2.8	Regular	-	-	-	-	-	Typical	-	-	-	-	Typical	-	-	-	-	Present	-	-	Remove		
70	<i>Eucalyptus acmenoides</i>	White Mahogany	720		720	226	22.0	12.0	8.6	2.9	Regular	-	-	-	-	-	Typical	-	-	-	-	Typical	-	-	-	-	-	-	-	Remove		
71	<i>Acacia leiocalyx</i>	Early-flowering Black Wattle	130		130	41	6.0	4.0	2.0	1.4	Regular	-	-	-	-	-	Typical	-	-	-	-	Typical	-	-	-	-	-	-	-	Remove		
72	<i>Corymbia intermedia</i>	Pink Bloodwood	170	170	240	76	16.0	6.0	2.9	1.8	Regular	-	-	-	-	-	Typical	-	-	-	-	Typical	-	-	-	-	-	-	-	Remove		
73	<i>Acacia leiocalyx</i>	Early-flowering Black Wattle	120		120	38	5.0	3.0	2.0	1.4	Regular	-	-	-	-	-	Typical	-	-	-	-	Typical	-	-	-	-	-	-	-	Remove		
74	<i>Corymbia intermedia</i>	Pink Bloodwood	130	100	164	52	14.0	4.0	2.0	1.5	Regular	-	-	-	-	-	Typical	-	-	-	-	Typical	-	-	-	-	-	-	-	Remove		
75	<i>Eucalyptus propinqua</i>	Small-fruited Grey Gum	350		350	110	20.0	9.0	4.2	2.1	Regular	-	-	-	-	-	Typical	-	-	-	-	Typical	-	-	-	-	-	-	-	Remove		
76	<i>Melaleuca quinquenervia</i>	Broad-leaved Paperbark	760		760	239	15.0	11.0	9.1	2.9	Regular	-	-	-	-	-	Typical	-	-	-	-	Typical	-	-	-	-	-	-	-	Remove		
77	<i>Eucalyptus acmenoides</i>	White Mahogany	210		210	66	14.0	5.0	2.5	1.7	Regular	-	-	-	-	-	Typical	-	-	-	-	Typical	-	-	-	-	-	-	-	Remove		
78	<i>Lophostemon suaveolens</i>	Swamp Box	250		250	79	13.0	5.0	3.0	1.8	Regular	-	-	-	-	-	Typical	-	-	-	-	Typical	-	-	-	-	-	-	-	Remove		
79	<i>Eucalyptus acmenoides</i>	White Mahogany	600		600	188	20.0	11.0	7.2	2.7	Regular	-	-	-	-	-	Typical	-	-	-	-	Typical	-	-	-	-	-	-	-	Remove		
80	<i>Allocasuarina littoralis</i>	Black She-oak	170		170	53	8.0	4.0	2.0	1.6	Regular	-	-	-	-	-	Typical	-	-	-	-	Typical	-	-	-	-	-	-	-	Remove		
81	<i>Lophostemon suaveolens</i>	Swamp Box	420		420	132	11.0	5.0	5.0	2.3	Regular	-	-	-	-	-	Typical	-	-	-	-	Typical	-	-	-	-	-	-	-	Remove		
82	<i>Lophostemon confertus</i>	Brush Box	240		240	75	12.0	6.0	2.9	1.8	Regular	-	-	-	-	-	Typical	Minor	-	-	-	-	Typical	-	-	-	-	Present	-	-	Remove	
83	<i>Eucalyptus acmenoides</i>	White Mahogany	140		140	44	8.0	6.0	2.0	1.4	Regular	-	-	-	-	-	Typical	-	-	-	-	Typical	-	-	-	-	-	-	-	Remove		
84	<i>Eucalyptus acmenoides</i>	White Mahogany	390		390	123	20.0	11.0	4.7	2.2	Regular	-	-	-	-	-	Typical	-	Native	-	-	Typical	-	-	-	-	-	-	-	Remove		
85	<i>Acacia disparrima</i>	Hickory Wattle	270		270	85	8.0	7.0	3.2	1.9	Regular	-	-	-	-	-	Typical	-	-	-	-	Typical	-	-	-	-	-	-	-	Remove		
86	<i>Acacia disparrima</i>	Hickory Wattle	110	80	136	43	8.0	3.0	2.0	1.4	Regular	-	-	-	-	-	Typical	-	-	-	-	Typical	-	-	-	-	-	-	-	Remove		
87	<i>Allocasuarina littoralis</i>	Black She-oak	200		200	63	10.0	4.0	2.4	1.7	Regular	-	-	-	-	-	Typical	-	-	-	-	Typical	-	-	-	-	-	-	-	Remove		
88	<i>Melaleuca linariifolia</i>	Snow In Summer	650		650	204	13.0	7.0	7.8	2.8	Regular	-	-	-	-	-	Typical	-	-	-	-	Typical	-	-	-	-	-	-	-	Remove		
89	<i>Allocasuarina littoralis</i>	Black She-oak	240		240	75	8.0	4.0	2.9	1.8	Regular	-	-	-	-	-	Typical	-	-	-	-	Typical	-	-	-	-	-	-	-	Remove		
90	<i>Allocasuarina littoralis</i>	Black She-oak	160		160	50	6.0	3.0	2.0	1.5	Regular	-	-	-	-	-	Typical	-	-	-	-	Typical	-	-	-	-	-	-	-	Remove		
91	<i>Corymbia intermedia</i>	Pink Bloodwood	310		310	97	10.0	5.0	3.7	2.0	Regular	-	-	-	-	-	Typical	-	-	-	-	Typical	-	-	-	-	-	-	-	Remove		
92	<i>Allocasuarina littoralis</i>	Black She-oak	230		230	72	6.0	4.0	2.8	1.8	Regular	-	-	-	-	-	Typical	-	-	-	-	Typical	-	-	-	-	-	-	-	Remove		
93	<i>Allocasuarina littoralis</i>	Black She-oak	250		250	79	10.0	5.0	3.0	1.8	Regular	-	-	-	-	-	Typical	-	-	-	-	Typical	-	-	-	-	-	-	-	Remove		
94	<i>Eucalyptus curtisii</i>	Plunket Mallee	470		470	148	7.0	9.0	5.6	2.4	Regular	-	-	-	-	-	Typical	-	-	-	-	Typical	-	-	-	-	-	-	-	Remove		
95	<i>Corymbia torelliana</i>	Cadaghi	120		120	38	8.0	2.0	2.0	1.4	Regular	-	-	-	-	-	Typical	-	-	-	-	Typical	-	-	-	-	-	-	-	Remove		
96	<i>Eucalyptus acmenoides</i>	White Mahogany	130		130	41	10.0	4.0	2.0	1.4	Regular	-	-	-	-	-	Typical	-	-	-	-	Typical	-	-	-	-	-	-	-	Remove		
97	<i>Eucalyptus acmenoides</i>	White Mahogany	210		210	66	16.0	5.0	2.5	1.7	Regular	-	-	-	-	-	Typical	-	-	-	-	Typical	-	-	-	-	-	-	-	Remove		
98	<i>Lophostemon suaveolens</i>	Swamp Box	100	70 60	136	43	8.0	5.0	2.0	1.4	Regular	-	-	-	-	-	Typical	-	-	-	-	Typical	-	-	-	-	-	-	-	Remove		
99	<i>Acacia leiocalyx</i>	Early-flowering Black Wattle	140		140	44	6.0	3.0	2.0	1.4	Regular	-	-	-	-	-	Typical	-	-	-	-	Typical	-	-	-	-	-	-	-	Remove		
100	<i>Eucalyptus acmenoides</i>	White Mahogany	460		460	145	22.0	12.0	5.5	2.4	Regular	-	-	-	-	-	Typical	-	Native	-	-	Typical	-	-	-	-	-	-	-	Remove		
101	<i>Eucalyptus acmenoides</i>	White Mahogany	230		230	72	18.0	7.0	2.8	1.8	Regular	-	-	-	-	-	Typical	-	-	-	-	Typical	-	-	-	-	-	-	-	Remove		
102	<i>Lophostemon confertus</i>	Brush Box	350	260	436	137	18.0	9.0	5.2	2.3	Regular	-	-	-	-	-	Typical	-	-	-	-	Typical	-	-	-	-	-	-	-	Remove		
103	<i>Liquidambar styraciflua</i>	Sweetgum	450		450	141	18.0	14.0	5.4	2.4	Regular	-	-	-	-	-	Typical	-	-	-	-	Typical	-	-	-	-	-	-	-	Remove		
104	<i>Acacia leiocalyx</i>	Early-flowering Black Wattle	100		100	31	5.0	3.0	2.0	1.3	Regular	-	-	-	-	-	Typical	-	-	-	-	Typical	-	-	-	-	-	-	-	Remove		
105	<i>Corymbia intermedia</i>	Pink Bloodwood	210		210	66	26.0	5.0	2.5	1.7	Regular	-	-	-	-	-	Typical	-	-	-	-	Typical	-	-	-	-	-	-	-	Remove		
106	<i>Melaleuca linariifolia</i>	Snow In Summer	150		150	47	4.0	4.0	2.0	1.5	Regular	-	-	-	-	-	Typical	-	-	-	-	Typical	-	-	-	-	-	-	-	Remove		
107	<i>Acacia leiocalyx</i>	Early-flowering Black Wattle	100		100	31	5.0	3.0	2.0	1.3	Regular	-	-	-	-	-	Typical	-	-	-	-	Typical	-	-	-	-	-	-	-	Remove		
108	<i>Schotia brachypetala</i>	Weeping boer-beam	480		480	151	13.0	10.0	5.8	2.4	Regular	-	-	-	-	-	Typical	-	-	-	-	Typical	-	-	-	-	-	-	-	Remove		
109	<i>Corymbia intermedia</i>	Pink Bloodwood	300		300	94	18.0	7.0	3.6	2.0	Regular	-	-	-	-	-	Typical	-	Native	-	-	Typical	-	-	-	-	Present	-	-	Remove		
110	<i>Melaleuca bracteata</i>	Black Tea Tree	170		170	53	13.0	7.0	2.0	1.6	Regular	-	-	-	-	-	Typical	-	-	-	-	Typical	-	-	-	-	-	-	-	Remove		
111	<i>Libidibia ferrea</i>	Leopard Tree	360		360	113	10.0	7.0	4.3	2.2	Regular	-	-	-	-	-	Typical	-	-	-	-	Typical	-	-	-	-	-	-	-	Remove		

Where this tree schedule conflicts with Tree Retention Plan drawings, tree retention shown on drawing prevails.

Specimen Details										Canopy Condition Details						Trunk Condition Details					Fauna Details and Habitat Value						Additional Details				
Tree ID	Botanical Name	Common Name	Trunk DBH (mm)	Additional Trunks DBH (mm)	Total DBH (mm) [AS 4970-2025]	Trunk Circumference (cm) [AS 4970-2025]	Height (m)	Spread (m)	Tree Protection Zone (m)	Structural Root Zone (m)	Canopy Form	Spreading	Thinning	Die-Back	Epicormic Growth	Lopped	Canopy Health	Leaning	Vines	Trunk Damage	Fire Damage	Trunk Health	Scats	Scratches	Hollows	Nest	Termite Nest	Habitat Value	Retention	Additional Notes	
112	<i>Ficus benjamina</i>	Weeping Fig	160		160	50	6.0	5.0	2.0	1.5	Regular	-	-	-	-	-	Typical	-	-	-	-	Typical	-	-	-	-	-	-	-	Remove	
113	<i>Acacia disparrima</i>	Hickory Wattle	100		100	31	10.0	3.0	2.0	1.3	Regular	-	-	-	-	-	Typical	-	-	-	-	Typical	-	-	-	-	-	-	-	Remove	
114	<i>Acacia disparrima</i>	Hickory Wattle	100	80 80	151	47	10.0	6.0	2.0	1.5	Regular	-	-	-	-	-	Typical	-	-	-	-	Typical	-	-	-	-	-	-	-	Remove	
115	<i>Corymbia torelliana</i>	Cadaghi	320		320	101	16.0	8.0	3.8	2.1	Regular	-	-	-	-	-	Typical	-	-	-	-	Typical	-	-	-	-	-	-	-	Remove	
116	<i>Acacia disparrima</i>	Hickory Wattle	280		280	88	15.0	8.0	3.4	1.9	Regular	-	-	-	-	-	Typical	-	-	-	-	Typical	-	-	-	-	-	-	-	Remove	
117	<i>Lophostemon confertus</i>	Brush Box	70		70	22	4.0	3.0	2.0	1.1	Regular	-	-	-	-	-	Typical	-	-	-	-	Typical	-	-	-	-	-	-	-	Retain	
118	<i>Citharexylum spinosum</i>	Fiddlewood	300		300	94	9.0	6.0	3.6	2.0	Regular	-	-	-	-	-	Typical	-	-	-	-	Typical	-	-	-	-	-	-	-	Remove	
119	<i>Syzygium luehmannii</i>	Cherry satinash	100	80	128	40	6.0	3.0	2.0	1.4	Regular	-	-	-	-	-	Typical	-	-	-	-	Typical	-	-	-	-	-	-	-	Remove	
120	<i>Syzygium luehmannii</i>	Cherry satinash	130		130	41	6.0	4.0	2.0	1.4	Regular	-	-	-	-	-	Typical	-	-	-	-	Typical	-	-	-	-	-	-	-	Remove	
121	<i>Lagerstroemia indica</i>	Crepe myrtle	280		280	88	10.0	5.0	3.4	1.9	Regular	-	-	-	-	-	Typical	-	-	-	-	Typical	-	-	-	-	-	-	-	Remove	
122	<i>Syzygium luehmannii</i>	Cherry satinash	100		100	31	5.0	4.0	2.0	1.3	Regular	-	-	-	-	-	Typical	-	-	-	-	Typical	-	-	-	-	-	-	-	Remove	
123	<i>Libidibia ferrea</i>	Leopard Tree	300		300	94	8.0	5.0	3.6	2.0	Regular	-	-	-	-	-	Typical	-	-	-	-	Typical	-	-	-	-	-	-	-	Remove	
124	<i>Syzygium luehmannii</i>	Cherry satinash	100	70	122	38	5.0	3.0	2.0	1.4	Regular	-	-	-	-	-	Typical	-	-	-	-	Typical	-	-	-	-	-	-	-	Remove	
125	<i>Syzygium luehmannii</i>	Cherry satinash	100	50	112	35	5.0	3.0	2.0	1.3	Regular	-	-	-	-	-	Typical	-	-	-	-	Typical	-	-	-	-	-	-	-	Remove	
126	<i>Erythrina herbacea</i>	Coral Bean Tree	400		400	126	16.0	10.0	4.8	2.3	Regular	-	-	-	-	-	Typical	-	-	-	-	Typical	-	-	-	-	-	-	-	Remove	
127	<i>Syzygium luehmannii</i>	Cherry satinash	110	50	121	38	5.0	3.0	2.0	1.4	Regular	-	-	-	-	-	Typical	-	-	-	-	Typical	-	-	-	-	-	-	-	Remove	
128	<i>Eucalyptus curtisii</i>	Plunket Mallee	80		80	25	4.0	3.0	2.0	1.1	Regular	-	-	-	-	-	Typical	-	-	-	-	Typical	-	-	-	-	-	-	-	Remove	
129	<i>Syzygium luehmannii</i>	Cherry satinash	80	60 50	112	35	5.0	3.0	2.0	1.3	Regular	-	-	-	-	-	Typical	-	-	-	-	Typical	-	-	-	-	-	-	-	Remove	
130	<i>Pinus elliotii</i>	Slash Pine	380		380	119	17.0	9.0	4.6	2.2	Regular	-	-	-	-	-	Typical	-	-	-	-	Typical	-	-	-	-	-	-	-	Remove	
131	<i>Syzygium luehmannii</i>	Cherry satinash	100		100	31	5.0	3.0	2.0	1.3	Regular	-	-	-	-	-	Typical	-	-	-	-	Typical	-	-	-	-	-	-	-	Remove	
132	<i>Acacia leiocalyx</i>	Early-flowering Black Wattle	170		170	53	8.0	6.0	2.0	1.6	Regular	-	-	-	-	-	Typical	-	-	-	-	Typical	-	-	-	-	-	-	-	Remove	
133	<i>Corymbia torelliana</i>	Cadaghi	250		250	79	14.0	8.0	3.0	1.8	Regular	-	-	-	-	-	Typical	-	-	-	-	Typical	-	-	-	-	-	-	-	Remove	
134	<i>Corymbia intermedia</i>	Pink Bloodwood	310		310	97	18.0	10.0	3.7	2.0	Regular	-	-	-	-	-	Typical	-	-	-	-	Typical	-	-	-	-	-	-	-	Remove	
135	<i>Allocasuarina littoralis</i>	Black She-oak	180		180	57	14.0	4.0	2.2	1.6	Regular	-	-	-	-	-	Typical	-	-	-	-	Typical	-	-	-	-	-	-	-	Remove	
136	<i>Corymbia intermedia</i>	Pink Bloodwood	170		170	53	10.0	5.0	2.0	1.6	Regular	-	-	-	-	-	Typical	-	-	-	-	Typical	-	-	-	-	-	-	-	Remove	
137	<i>Callistemon viminalis</i>	Weeping Bottlebrush	150		150	47	8.0	4.0	2.0	1.5	Regular	-	-	-	-	-	Typical	-	-	-	-	Typical	-	-	-	-	-	-	-	Remove	
138	<i>Eucalyptus propinqua</i>	Small-fruited Grey Gum	390		390	123	17.0	10.0	4.7	2.2	Regular	-	-	-	-	-	Typical	-	-	-	-	Typical	-	-	-	-	-	-	-	Remove	
139	<i>Lophostemon confertus</i>	Brush Box	130		130	41	8.0	4.0	2.0	1.4	Regular	-	-	-	-	-	Typical	-	-	-	-	Typical	-	-	-	-	-	-	-	Remove	
140	<i>Angophora leiocarpa</i>	Smooth-Gummed Apple	310		310	97	14.0	6.0	3.7	2.0	Regular	-	-	-	-	-	Typical	-	-	-	-	Typical	-	-	-	-	-	-	-	Remove	
141	<i>Melaleuca linariifolia</i>	Snow In Summer	130		130	41	4.0	4.0	2.0	1.4	Regular	-	-	-	-	-	Typical	-	-	-	-	Typical	-	-	-	-	-	-	-	Remove	
142	<i>Allocasuarina littoralis</i>	Black She-oak	250		250	79	10.0	6.0	3.0	1.8	Regular	-	-	-	-	-	Typical	-	-	-	-	Typical	-	-	-	-	-	-	-	Remove	
143	<i>Corymbia torelliana</i>	Cadaghi	120		120	38	4.0	3.0	2.0	1.4	Regular	-	-	-	-	-	Typical	-	-	-	-	Typical	-	-	-	-	-	-	-	Remove	
144	<i>Eucalyptus siderophloia</i>	Northern Grey Ironbark	160		160	50	10.0	6.0	2.0	1.5	Regular	-	-	-	-	-	Typical	-	-	-	-	Typical	-	-	-	-	-	-	-	Retain	
145	<i>Corymbia intermedia</i>	Pink Bloodwood	100		100	31	10.0	2.0	2.0	1.3	Regular	-	-	-	-	-	Typical	-	-	-	-	Typical	-	-	-	-	-	-	-	Retain	
146	<i>Corymbia intermedia</i>	Pink Bloodwood	430		430	135	19.0	12.0	5.2	2.3	Regular	-	-	-	-	-	Typical	-	-	-	-	Typical	-	-	-	-	-	-	-	Remove	
147	<i>Corymbia intermedia</i>	Pink Bloodwood	160		160	50	12.0	4.0	2.0	1.5	Regular	-	-	-	-	-	Typical	-	-	-	-	Typical	-	-	-	-	-	-	-	Retain	
148	<i>Acacia disparrima</i>	Salwood	160		160	50	9.0	6.0	2.0	1.5	Regular	-	-	-	-	-	Typical	-	-	-	-	Typical	-	-	-	-	-	-	-	Remove	
149	<i>Corymbia intermedia</i>	Pink Bloodwood	130		130	41	10.0	4.0	2.0	1.4	Regular	-	-	-	-	-	Typical	-	-	-	-	Typical	-	-	-	-	-	-	-	Retain	
150	<i>Pinus elliotii</i>	Slash Pine	250		250	79	15.0	7.0	3.0	1.8	Regular	-	-	-	-	-	Typical	-	-	-	-	Typical	-	-	-	-	-	-	-	Remove	
151	<i>Eucalyptus siderophloia</i>	Northern Grey Ironbark	300		300	94	20.0	8.0	3.6	2.0	Regular	-	-	-	-	-	Typical	-	-	-	-	Typical	-	-	-	-	-	-	-	Retain	
152	<i>Corymbia intermedia</i>	Pink Bloodwood	110		110	35	5.0	3.0	2.0	1.3	Regular	-	-	-	-	-	Typical	-	-	-	-	Typical	-	-	-	-	-	-	-	Remove	
153	<i>Acacia disparrima</i>	Hickory Wattle	190		190	60	12.0	6.0	2.3	1.6	Regular	-	-	-	-	-	Typical	-	-	-	-	Typical	-	-	-	-	-	-	-	Retain	
154	<i>Eucalyptus propinqua</i>	Small-fruited Grey Gum	380		380	119	22.0	9.0	4.6	2.2	Regular	-	-	-	-	-	Typical	-	-	-	-	Typical	-	-	-	-	-	-	-	Retain	
155	<i>Lophostemon suaveolens</i>	Swamp Box	210		210	66	8.0	4.0	2.5	1.7	Regular	-	-	-	-	-	Typical	-	-	-	-	Typical	-	-	-	-	-	-	-	Remove	
156	<i>Corymbia intermedia</i>	Pink Bloodwood	230		230	72	16.0	7.0	2.8	1.8	Regular	-	-	-	-	-	Typical	-	-	-	-	Typical	-	-	-	-	-	-	-	Retain	
157	<i>Corymbia intermedia</i>	Pink Bloodwood	230		230	72	10.0	5.0	2.8	1.8	Regular	-	-	-	-	-	Typical	-	-	-	-	Typical	-	-	-	-	-	-	-	Remove	
158	<i>Eucalyptus acmenoides</i>	White Mahogany	410		410	129	18.0	10.0	4.9	2.3	Regular	-	-	-	-	-	Typical	-	-	-	-	Typical	-	-	-	-	-	-	-	Retain	
159	<i>Eucalyptus acmenoides</i>	White Mahogany	420		420	132	20.0	11.0	5.0	2.3	Regular	-	-	-	-	-	Typical	-	-	-	-	Typical	-	-	-	-	-	-	-	Retain	
160	<i>Syzygium luehmannii</i>	Cherry satinash	130		130	41	5.0	4.0	2.0	1.4	Regular	-	-	-	-	-	Typical	-	-	-	-	Typical	-	-	-	-	-	-	-	Remove	
161	<i>Eucalyptus siderophloia</i>	Northern Grey Ironbark	150		150	47	16.0	7.0	2.0	1.5	Regular	-	-	-	-	-	Typical	-	-	-	-	Typical	-	-	-	-	-	-	-	Retain	
162	<i>Corymbia torelliana</i>	Cadaghi	470		470	148	17.0	12.0	5.6	2.4	Regular	-	-	-	-	-	Typical	-	-	-	-	Typical	-	-	-	-	-	-	-	Remove	
163	<i>Pinus elliotii</i>	Slash Pine	350		350	110	19.0	6.0	4.2	2.1	Regular	-	-	-	-	-	Typical	-	-	-	-	Typical	-	-	-	-	-	-	-	Remove	
164	<i>Pinus elliotii</i>	Slash Pine	380		380	119	18.0	9.0	4.6	2.2	Regular	-	-	-	-	-	Typical	-	-	-	-	Typical	-	-	-	-	-	-	-	Remove	
165	<i>Pinus elliotii</i>	Slash Pine	400		400	126	17.0	8.0	4.8	2.3	Regular	-	-	-	-	-	Typical	-	-	-	-	Typical	-	-	-	-	-	-	-	Remove	
166	<i>Lophostemon confertus</i>	Brush Box	240		240	75	10.0	5.0	2.9	1.8	Regular	-	-	-	-	-	Typical	-	-	-	-	Typical	-	-	-	-	-	-	-	Retain	
167	<i>Lophostemon confertus</i>	Brush Box	220		220	69	8.0	4.0	2.6	1.8	Regular	-	-	-	-	-	Typical	-	-	-	-	Typical	-	-	-	-	-	-	-	Retain	
172	<i>Afrocarpus gracilior</i>	Fern pine	130		130	41	12.0	5.0	2.0	1.4	Regular	-	-	-	-	-	Typical	-	-	-	-	Typical	-	-	-	-	-	-	-	Remove	

Where this tree schedule conflicts with Tree Retention Plan drawings, tree retention shown on drawing prevails.

Specimen Details											Canopy Condition Details						Trunk Condition Details					Fauna Details and Habitat Value						Additional Details			
Tree ID	Botanical Name	Common Name	Trunk DBH (mm)	Additional Trunks DBH (mm)	Total DBH (mm) [AS 4970-2025]	Trunk Circumference (cm) [AS 4970-2025]	Height (m)	Spread (m)	Tree Protection Zone (m)	Structural Root Zone (m)	Canopy Form	Spreading	Thinning	Die-Back	Epicormic Growth	Lopped	Canopy Health	Leaning	Vines	Trunk Damage	Fire Damage	Trunk Health	Scats	Scratches	Hollows	Nest	Termite Nest	Habitat Value	Retention	Additional Notes	
173	<i>Roystonea regia</i>	Cuban Royal Palm	235		235	74	12.0	5.0	2.8	1.8	Regular	-	-	-	-	-	Typical	-	-	-	-	Typical	-	-	-	-	-	-	Remove		
174	<i>Agathis robusta</i>	Kauri Pine	120		120	38	14.0	4.0	2.0	1.4	Regular	-	-	-	-	-	Typical	-	-	-	-	Typical	-	-	-	-	-	-	Remove		
175	<i>Agathis robusta</i>	Kauri Pine	180		180	57	15.0	6.0	2.2	1.6	Regular	-	-	-	-	-	Typical	-	-	-	-	Typical	-	-	-	-	-	-	Remove		
176	<i>Wodyetia bifurcata</i>	Foxtail Palm	100		100	31	7.0	3.0	2.0	1.3	Regular	-	-	-	-	-	Typical	-	-	-	-	Typical	-	-	-	-	-	-	Remove		
177	<i>Corymbia torelliana</i>	Cadaghi	340	290	447	140	16.0	11.0	5.4	2.4	Regular	-	-	-	-	-	Typical	-	-	-	-	Typical	-	-	-	-	-	-	Remove		
178	<i>Lophostemon suaveolens</i>	Swamp Box	205		205	64	15.0	7.0	2.5	1.7	Regular	-	-	-	-	-	Typical	-	-	-	-	Typical	-	-	-	-	-	-	Remove		
179	<i>Stenocarpus sinuatus</i>	Firewheel Tree	150		150	47	14.0	6.0	2.0	1.5	Regular	-	-	-	-	-	Typical	-	-	-	-	Typical	-	-	-	-	-	-	Remove		
180	<i>Syagrus romanzoffiana</i>	Cocos Palm	225		225	71	14.0	7.0	2.7	1.8	Regular	-	-	-	-	-	Typical	Minor	-	-	-	-	Typical	-	-	-	-	-	-	Remove	
181	<i>Lophostemon suaveolens</i>	Swamp Box	220		220	69	16.0	7.0	2.6	1.8	Regular	-	-	-	-	-	Typical	-	-	-	-	Typical	-	-	-	-	-	-	Remove		
182	<i>Corymbia intermedia</i>	Pink Bloodwood	200		200	63	15.0	7.0	2.4	1.7	Regular	-	-	-	-	-	Typical	-	-	-	-	Typical	-	-	-	-	-	-	Remove		
183	<i>Roystonea regia</i>	Cuban Royal Palm	335		335	105	15.0	8.0	4.0	2.1	Regular	-	-	-	-	-	Typical	-	-	-	-	Typical	-	-	-	-	-	-	Remove		
184	<i>Lophostemon suaveolens</i>	Swamp Box	180		180	57	15.0	1.0	2.2	1.6	Regular	-	-	-	Epicormic	-	Poor	-	-	-	-	-	Typical	-	-	-	-	-	-	Remove	
185	<i>Macaranga tanarius</i>	Macaranga	190		190	60	15.0	7.0	2.3	1.6	Regular	-	-	-	-	-	Typical	-	-	-	-	Typical	-	-	-	-	-	-	Remove		
186	<i>Macaranga tanarius</i>	Macaranga	110		110	35	15.0	7.0	2.0	1.3	Regular	-	-	-	-	-	Typical	-	-	-	-	Typical	-	-	-	-	-	-	Retain		
187	<i>Melaleuca linariifolia</i>	Snow In Summer	355		355	112	16.0	8.0	4.3	2.1	Regular	-	-	-	-	-	Typical	-	-	-	-	Typical	-	-	-	-	-	-	Remove		
188	<i>Melaleuca linariifolia</i>	Snow In Summer	325		325	102	16.0	7.0	3.9	2.1	Regular	-	-	-	-	-	Typical	-	-	-	-	Typical	-	-	-	-	-	-	Remove		
189	<i>Melaleuca linariifolia</i>	Snow In Summer	275		275	86	14.0	9.0	3.3	1.9	Regular	-	-	-	-	-	Typical	-	-	-	-	Typical	-	-	-	-	-	-	Remove		
190	DEAD/STAG		120		120	38	14.0	3.0	2.0	1.4	One-sided	-	-	-	-	-	Typical	-	-	-	-	Typical	-	-	-	-	-	-	Remove		
191	<i>Grevillea robusta</i>	Silky Oak	450		450	141	17.0	10.0	5.4	2.4	Regular	-	-	-	-	-	Typical	-	-	-	-	Typical	-	-	-	-	-	-	Remove		
192	<i>Syzygium luehmannii</i>	Small-leaved Lillipilli	310		310	97	15.0	8.0	3.7	2.0	Regular	-	-	-	-	-	Typical	-	-	-	-	Typical	-	-	-	-	-	-	Remove		
193	<i>Cinnamomum camphora</i>	Camphor Laurel	230	200	305	96	16.0	9.0	3.7	2.0	Regular	-	-	-	-	-	Typical	-	-	-	-	Typical	-	-	-	-	-	-	Remove		
194	<i>Syzygium luehmannii</i>	Small-leaved Lillipilli	100		100	31	6.0	2.0	2.0	1.3	Regular	-	-	-	-	-	Typical	-	-	-	-	Typical	-	-	-	-	-	-	Remove		
195	<i>Syzygium luehmannii</i>	Small-leaved Lillipilli	100		100	31	6.0	2.0	2.0	1.3	Regular	-	-	-	-	-	Typical	-	-	-	-	Typical	-	-	-	-	-	-	Remove		
196	<i>Syzygium luehmannii</i>	Small-leaved Lillipilli	100		100	31	7.0	3.0	2.0	1.3	Regular	-	-	-	-	-	Typical	-	-	-	-	Typical	-	-	-	-	-	-	Remove		
197	<i>Syzygium luehmannii</i>	Small-leaved Lillipilli	125		125	39	8.0	3.0	2.0	1.4	Regular	-	-	-	-	-	Typical	-	-	-	-	Typical	-	-	-	-	-	-	Remove		
198	<i>Syzygium luehmannii</i>	Small-leaved Lillipilli	120		120	38	9.0	3.0	2.0	1.4	Regular	-	-	-	-	-	Typical	-	-	-	-	Typical	-	-	-	-	-	-	Remove		
199	<i>Syzygium luehmannii</i>	Small-leaved Lillipilli	115		115	36	8.0	3.0	2.0	1.3	Regular	-	-	-	-	-	Typical	-	-	-	-	Typical	-	-	-	-	-	-	Remove		
200	<i>Syzygium luehmannii</i>	Small-leaved Lillipilli	115		115	36	8.0	3.0	2.0	1.3	Regular	-	-	-	-	-	Typical	-	-	-	-	Typical	-	-	-	-	-	-	Remove		
201	<i>Syzygium luehmannii</i>	Small-leaved Lillipilli	120	60	134	42	9.0	4.0	2.0	1.4	Regular	-	-	-	-	-	Typical	-	-	-	-	Typical	-	-	-	-	-	-	Remove		
202	<i>Syzygium luehmannii</i>	Small-leaved Lillipilli	115	80	140	44	8.0	3.0	2.0	1.4	Regular	-	-	-	-	-	Typical	-	-	-	-	Typical	-	-	-	-	-	-	Remove		
203	<i>Syzygium luehmannii</i>	Small-leaved Lillipilli	70	60	92	29	7.0	2.0	2.0	1.2	Regular	-	-	-	-	-	Typical	-	-	-	-	Typical	-	-	-	-	-	-	Remove		
204	<i>Syzygium luehmannii</i>	Small-leaved Lillipilli	130		130	41	2.0	3.0	2.0	1.4	Regular	-	-	-	-	-	Typical	-	-	-	-	Typical	-	-	-	-	-	-	Remove		
205	<i>Syzygium luehmannii</i>	Small-leaved Lillipilli	110		110	35	2.0	3.0	2.0	1.3	Regular	-	-	-	-	-	Typical	-	-	-	-	Typical	-	-	-	-	-	-	Remove		
206	<i>Syzygium luehmannii</i>	Small-leaved Lillipilli	100		100	31	2.0	3.0	2.0	1.3	Regular	-	-	-	-	-	Typical	-	-	-	-	Typical	-	-	-	-	-	-	Remove		
207	<i>Archontophoenix alexandrae</i>	Alexandra Palm	105		105	33	6.0	2.0	2.0	1.3	Regular	-	-	-	-	-	Typical	-	-	-	-	Typical	-	-	-	-	-	-	Remove		
208	<i>Archontophoenix alexandrae</i>	Alexandra Palm	100		100	31	6.0	2.0	2.0	1.3	Regular	-	-	-	-	-	Typical	-	-	-	-	Typical	-	-	-	-	-	-	Remove		
209	<i>Lophostemon suaveolens</i>	Swamp Box	170	160	233	73	13.0	6.0	2.8	1.8	Regular	-	-	-	-	-	Typical	-	-	-	-	Typical	-	-	-	-	-	-	Remove		
210	<i>Buckinghamia celsissima</i>	Ivory Curt	115		115	36	9.0	4.0	2.0	1.3	Regular	-	-	-	-	-	Typical	-	-	-	-	Typical	-	-	-	-	-	-	Remove		
211	<i>Lophostemon suaveolens</i>	Swamp Box	180	140	228	72	15.0	8.0	2.7	1.8	Regular	-	-	-	-	-	Typical	-	-	-	-	Typical	-	-	-	-	-	-	Remove		
212	<i>Lophostemon suaveolens</i>	Swamp Box	180		180	57	14.0	7.0	2.2	1.6	Regular	-	-	-	-	-	Typical	-	-	-	-	Typical	-	-	-	-	-	-	Remove		
213	<i>Corymbia torelliana</i>	Cadaghi	550		550	173	18.0	13.0	6.6	2.6	Regular	-	-	-	-	-	Typical	-	-	-	-	Typical	-	-	-	-	-	-	Remove		
214	<i>Pinus elliotii</i>	Slash Pine	335		335	105	18.0	9.0	4.0	2.1	Regular	-	-	-	-	-	Typical	-	-	-	-	Typical	-	-	-	-	-	-	Remove		
215	<i>Psidium guajava</i>	Common Guava	80	60	100	31	3.0	2.0	2.0	1.3	Regular	-	-	-	-	-	Typical	-	-	-	-	Typical	-	-	-	-	-	-	Remove		
216	<i>Fushia sp.</i>	Fushia	320		320	101	12.0	8.0	3.8	2.1	Regular	-	-	-	-	-	Typical	-	-	-	-	Typical	-	-	-	-	-	-	Remove		
217	<i>Carya illinoensis</i>	Pecan Nut	220		220	69	10.0	6.0	2.6	1.8	Regular	-	-	-	-	-	Typical	-	-	-	-	Typical	-	-	-	-	-	-	Remove		
218	<i>Corymbia intermedia</i>	Pink Bloodwood	680		680	214	17.0	11.0	8.2	2.8	Regular	-	-	-	Die-back	-	Typical	-	Native	-	-	Typical	-	-	-	-	-	-	Remove		
219	<i>Wodyetia bifurcata</i>	Foxtail Palm	100		100	31	2.0	1.0	2.0	1.3	Regular	-	-	-	-	-	Typical	-	-	-	-	Typical	-	-	-	-	-	-	Remove		
220	<i>Acacia disparrima</i>	Hickory Wattle	330		330	104	15.0	8.0	4.0	2.1	One-sided	-	-	-	-	-	Poor	-	-	-	-	Typical	-	-	-	-	-	-	Remove		
221	<i>Lophostemon suaveolens</i>	Swamp Box	235		235	74	16.0	7.0	2.8	1.8	Regular	-	-	-	-	-	Typical	-	-	-	-	Typical	-	-	-	-	-	-	Remove		
222	<i>Syagrus romanzoffiana</i>	Cocos Palm	180		180	57	12.0	4.0	2.2	1.6	Regular	-	-	-	-	-	Typical	-	-	-	-	Typical	-	-	-	-	-	-	Remove		
223	<i>Melaleuca quinquerivaria</i>	Broad-leaved Paperbark	190		190	60	15.0	7.0	2.3	1.6	Regular	-	-	-	-	-	Typical	-	-	-	-	Typical	-	-	-	-	-	-	Remove		
224	Unknown Planted Species	Unknown Planted Species (invasive)	130		130	41	14.0	7.0	2.0	1.4	Regular	-	-	-	-	-	Typical	-	-	-	-	Typical	-	-	-	-	-	-	Remove		
225	<i>Cinnamomum camphora</i>	Camphor Laurel	190		190	60	15.0	8.0	2.3	1.6	Regular	-	-	-	-	-	Typical	-	-	-	-	Typical	-	-	-	-	-	-	Retain		
226	<i>Cinnamomum camphora</i>	Camphor Laurel	120	110	163	51	14.0	8.0	2.0	1.5	Regular	-	-	-	-	-	Typical	-	-	-	-	Typical	-	-	-	-	-	-	Remove		
227	<i>Melaleuca linariifolia</i>	Snow In Summer	200	110, 130, 120	289	91	15.0	8.0	3.5	2.0	Regular	-	-	-	-	-	Typical	-	-	-	-	Typical	-	-	-	-	-	-	Remove		
228	<i>Corymbia torelliana</i>	Cadaghi	320	220	388	122	17.0	8.0	4.7	2.2	Regular	-	-	-	-	-	Typical	-	-	-	-	Typical	-	-	-	-	-	-	Remove		
229	<i>Acacia disparrima</i>	Hickory Wattle	230	220	318	100	15.0	9.0	3.8	2.0	Regular	-	-	-	-	-	Typical	-	-	-	-	Typical	-	-	-	-	-	-	Remove		



Where this tree schedule conflicts with Tree Retention Plan drawings, tree retention shown on drawing prevails.

Specimen Details											Canopy Condition Details						Trunk Condition Details					Fauna Details and Habitat Value						Additional Details		
Tree ID	Botanical Name	Common Name	Trunk DBH (mm)	Additional Trunks DBH (mm)	Total DBH (mm) [AS 4970-2025]	Trunk Circumference (cm) [AS 4970-2025]	Height (m)	Spread (m)	Tree Protection Zone (m)	Structural Root Zone (m)	Canopy Form	Spreading	Thinning	Die-Back	Epicormic Growth	Lopped	Canopy Health	Leaning	Vines	Trunk Damage	Fire Damage	Trunk Health	Scats	Scratches	Hollows	Nest	Termite Nest	Habitat Value	Retention	Additional Notes
230	<i>Acacia disparrima</i>	Hickory Wattle	120		120	38	9.0	4.0	2.0	1.4	Regular	-	-	-	-	-	Typical	-	-	-	-	Typical	-	-	-	-	-	-	Remove	
231	<i>Macaranga tanarius</i>	Macaranga	115		115	36	11.0	6.0	2.0	1.3	Regular	-	-	-	-	-	Typical	-	-	-	-	Typical	-	-	-	-	-	-	Remove	
232	<i>Macaranga tanarius</i>	Macaranga	120	115, 110, 115	230	72	13.0	7.0	2.8	1.8	Regular	-	-	-	-	-	Typical	-	-	-	-	Typical	-	-	-	-	-	-	Remove	
233	<i>Macaranga tanarius</i>	Macaranga	120	110, 110	196	62	13.0	7.0	2.4	1.7	Regular	-	-	-	-	-	Typical	-	-	-	-	Typical	-	-	-	-	-	-	Remove	
234	<i>Acacia disparrima</i>	Hickory Wattle	420		420	132	15.0	11.0	5.0	2.3	Regular	-	-	-	-	-	Typical	-	-	-	-	Typical	-	-	-	-	-	-	Remove	
235	<i>Pinus elliotii</i>	Slash Pine	370		370	116	19.0	13.0	4.4	2.2	Regular	-	-	-	-	-	Typical	-	-	-	-	Typical	-	-	-	-	-	-	Remove	
236	<i>Pinus elliotii</i>	Slash Pine	440		440	138	19.0	14.0	5.3	2.3	Regular	-	-	-	-	-	Typical	-	-	-	-	Typical	-	-	-	-	-	-	Remove	
237	<i>Pinus elliotii</i>	Slash Pine	380	190	425	133	19.0	12.0	5.1	2.3	Regular	-	-	Die-back	-	-	Typical	-	-	-	-	Typical	-	-	-	-	-	-	Remove	
238	<i>Lophostemon suaveolens</i>	Swamp Box	160		160	50	15.0	7.0	2.0	1.5	Regular	-	-	-	-	-	Typical	-	-	-	-	Typical	-	-	-	-	-	-	Retain	
239	<i>Lophostemon suaveolens</i>	Swamp Box	400		400	126	15.0	9.0	4.8	2.3	Regular	-	-	-	-	-	Typical	-	-	-	-	Typical	-	-	-	-	-	-	Retain	
240	<i>Mangifera indica</i>	Mango	550		550	173	11.0	9.0	6.6	2.6	Regular	-	-	-	-	-	Typical	-	-	-	-	Typical	-	-	-	-	-	-	Remove (Subject to Future Rehab)	
241	<i>Mangifera indica</i>	Mango	310		310	97	11.0	9.0	3.7	2.0	Regular	-	-	-	-	-	Typical	-	-	-	-	Typical	-	-	-	-	-	-	Remove (Subject to Future Rehab)	
242	<i>Mangifera indica</i>	Mango	150	145, 145	254	80	9.0	8.0	3.0	1.9	Regular	-	-	-	-	-	Typical	-	-	-	-	Typical	-	-	-	-	-	-	Remove (Subject to Future Rehab)	
243	<i>Mangifera indica</i>	Mango	340		340	107	7.0	8.0	4.1	2.1	Regular	-	-	-	-	-	Typical	-	-	-	-	Typical	-	-	-	-	-	-	Remove (Subject to Future Rehab)	
244	<i>Mangifera indica</i>	Mango	210		210	66	7.0	6.0	2.5	1.7	Regular	-	-	-	-	-	Typical	-	-	-	-	Typical	-	-	-	-	-	-	Remove (Subject to Future Rehab)	
245	<i>Mangifera indica</i>	Mango	140	120, 120	220	69	8.0	7.0	2.6	1.8	Regular	-	-	-	-	-	Typical	-	-	-	-	Typical	-	-	-	-	-	-	Remove (Subject to Future Rehab)	
246	<i>Mangifera indica</i>	Mango	280	210	350	110	11.0	9.0	4.2	2.1	Regular	-	-	-	-	-	Typical	-	-	-	-	Typical	-	-	-	-	-	-	Remove (Subject to Future Rehab)	
247	<i>Mangifera indica</i>	Mango	190	190, 170, 170	361	113	11.0	9.0	4.3	2.2	Regular	-	-	-	-	-	Typical	-	-	-	-	Typical	-	-	-	-	-	-	Remove (Subject to Future Rehab)	
248	<i>Mangifera indica</i>	Mango	250	210, 200	383	120	11.0	9.0	4.6	2.2	Regular	-	-	-	-	-	Typical	-	-	-	-	Typical	-	-	-	-	-	-	Remove (Subject to Future Rehab)	
249	<i>Diospyros nigra</i>	Black Sapote	130	130, 130	225	71	10.0	8.0	2.7	1.8	Regular	-	-	-	-	-	Typical	-	-	-	-	Typical	-	-	-	-	-	-	Remove (Subject to Future Rehab)	
250	<i>Syzygium samarangense</i>	Java apple	120	130, 100, 80	218	69	9.0	8.0	2.6	1.7	Regular	-	-	-	-	-	Typical	-	-	-	-	Typical	-	-	-	-	-	-	Remove (Subject to Future Rehab)	
251	<i>Mangifera indica</i>	Mango	340	270	434	136	11.0	9.0	5.2	2.3	Regular	-	-	-	-	-	Typical	-	-	-	-	Typical	-	-	-	-	-	-	Remove (Subject to Future Rehab)	
252	<i>Macadamia integrifolia</i>	Macadamia Nut	110	40	117	37	12.0	5.0	2.0	1.3	Regular	-	-	-	-	-	Typical	-	-	-	-	Typical	-	-	-	-	-	-	Remove	
253	<i>Mangifera indica</i>	Mango	260	210, 130, 120	378	119	11.0	9.0	4.5	2.2	Regular	-	-	-	-	-	Typical	-	-	-	-	Typical	-	-	-	-	-	-	Remove	
254	<i>Mangifera indica</i>	Mango	260	220, 200	395	124	12.0	9.0	4.7	2.2	Regular	-	-	-	-	-	Typical	-	-	-	-	Typical	-	-	-	-	-	-	Remove	
255	<i>Mangifera indica</i>	Mango	360		360	113	12.0	10.0	4.3	2.2	Regular	-	-	-	-	-	Typical	-	-	-	-	Typical	-	-	-	-	-	-	Remove	
256	<i>Mangifera indica</i>	Mango	270		382	120	11.0	9.0	4.6	2.2	Regular	-	-	-	-	-	Typical	-	-	-	-	Typical	-	-	-	-	-	-	Remove	
257	<i>Mangifera indica</i>	Mango	230	200, 300	428	134	13.0	10.0	5.1	2.3	Regular	-	-	-	-	-	Typical	-	-	-	-	Typical	-	-	-	-	-	-	Remove	
258	<i>Lophostemon confertus</i>	Brush Box	230		230	72	12.0	7.0	2.8	1.8	Regular	-	-	-	-	-	Typical	-	-	-	-	Typical	-	-	-	-	-	-	Remove	
259	<i>Syzygium australe</i>	Brush Cherry	135		135	42	10.0	4.0	2.0	1.4	Regular	-	-	-	-	-	Typical	-	-	-	-	Typical	-	-	-	-	-	-	Remove	
260	<i>Syzygium australe</i>	Brush Cherry	130	120	177	56	8.0	4.0	2.1	1.6	Regular	-	-	-	-	-	Typical	-	-	-	-	Typical	-	-	-	-	-	-	Remove	
261	<i>Elaeocarpus reticulatus</i>	Blueberry Ash	120		120	38	9.0	2.0	2.0	1.4	Regular	-	-	-	-	-	Typical	-	-	-	-	Typical	-	-	-	-	-	-	Remove	
262	<i>Syzygium australe</i>	Brush Cherry	120		120	38	8.0	4.0	2.0	1.4	Regular	-	-	-	-	-	Typical	-	-	-	-	Typical	-	-	-	-	-	-	Remove	
263	<i>Allocasuarina littoralis</i>	Black She-oak	210		210	66	10.0	4.0	2.5	1.7	Regular	-	-	-	-	-	Typical	-	-	-	-	Typical	-	-	-	-	-	-	Remove	
264	<i>Allocasuarina littoralis</i>	Black She-oak	130		130	41	9.0	3.0	2.0	1.4	Regular	-	-	-	-	-	Typical	-	-	-	-	Typical	-	-	-	-	-	-	Remove	
265	<i>Allocasuarina littoralis</i>	Black She-oak	160		160	50	10.0	2.0	2.0	1.5	Regular	-	-	Die-back	-	-	Typical	-	Native	-	-	Typical	-	-	-	-	-	-	Remove	
266	<i>Allocasuarina littoralis</i>	Black She-oak	170		170	53	9.0	3.0	2.0	1.6	Regular	-	-	-	-	-	Typical	-	Native	-	-	Typical	-	-	-	-	-	-	Remove	
267	<i>Allocasuarina littoralis</i>	Black She-oak	180		180	57	12.0	4.0	2.2	1.6	Regular	-	-	-	-	-	Typical	-	-	-	-	Typical	-	-	-	-	-	-	Remove	
268	<i>Allocasuarina littoralis</i>	Black She-oak	300		300	94	14.0	4.0	3.6	2.0	Regular	-	-	-	-	-	Typical	-	-	-	-	Typical	-	-	Present	-	-	-	Retain	
269	<i>Allocasuarina littoralis</i>	Black She-oak	250		250	79	14.0	4.0	3.0	1.8	Regular	-	-	-	-	-	Typical	-	-	-	-	Typical	-	-	-	-	-	-	Retain	
270	<i>Lophostemon confertus</i>	Brush Box	440	150	465	146	20.0	9.0	5.6	2.4	Regular	-	-	-	-	-	Typical	-	-	-	-	Typical	-	-	-	-	-	-	Retain	
271	<i>Allocasuarina littoralis</i>	Black She-oak	140		140	44	10.0	3.0	2.0	1.4	Regular	-	-	-	-	-	Typical	-	-	-	-	Typical	-	-	-	-	-	-	Retain	
272	<i>Allocasuarina littoralis</i>	Black She-oak	230		230	72	10.0	3.0	2.8	1.8	Regular	-	-	Die-back	-	-	Typical	-	-	-	-	Typical	-	-	-	-	-	-	Retain	
273	<i>Lophostemon suaveolens</i>	Swamp Box	100		100	31	8.0	2.0	2.0	1.3	Regular	-	-	-	-	-	Typical	-	-	-	-	Typical	-	-	-	-	-	-	Retain	
274	<i>Corymbia intermedia</i>	Pink Bloodwood	230		230	72	16.0	5.0	2.8	1.8	Regular	-	-	-	-	-	Typical	-	-	-	-	Typical	-	-	-	-	-	-	Retain	
275	<i>Corymbia intermedia</i>	Pink Bloodwood	350		350	110	22.0	10.0	4.2	2.1	Regular	-	-	-	-	-	Typical	-	-	-	-	Typical	-	-	-	-	-	-	Retain	
276	<i>Araucaria cunninghamii</i>	Hoop Pine	460		460	145	19.0	6.0	5.5	2.4	Regular	-	-	-	-	-	Typical	-	-	-	-	Typical	-	-	-	-	-	-	Remove	
277	<i>Melaleuca quinquenervia</i>	Broad-leaved Paperbark	350		350	110	16.0	7.0	4.2	2.1	Regular	-	-	-	-	-	Typical	-	-	-	-	Typical	-	-	-	-	-	-	Remove	
278	<i>Melaleuca quinquenervia</i>	Broad-leaved Paperbark	220		220	69	14.0	4.0	2.6	1.8	Regular	-	-	-	-	-	Typical	-	-	-	-	Typical	-	-	-	-	-	-	Remove	
279	<i>Jacaranda mimosifolia</i>	Jacaranda	160	140 120 180	303	95	9.0	7.0	3.6	2.0	Regular	-	-	-	-	-	Typical	-	-	-	-	Typical	-	-	-	-	-	-	Remove	
280	<i>Syagrus romanzoffiana</i>	Cocos Palm	220		220	69	10.0	5.0	2.6	1.8	Regular	-	-	-	-	-	Typical	-	-	-	-	Typical	-	-	-	-	-	-	Remove	
281	<i>Corymbia ptychocarpa</i>	Swamp Bloodwood	180		180	57	10.0	7.0	2.2	1.6	Regular	-	-	-	-	-	Typical	Minor	-	-	-	-	Typical	-	-	-	-	-	Remove	
282	<i>Lophanthera lactescens</i>	Golden Chain Tree	160		160	50	15.0	4.0	2.0	1.5	Regular	-	-	-	-	-	Typical	-	-	-	-	Typical	-	-	-	-	-	-	Remove	
283	<i>Corymbia intermedia</i>	Pink Bloodwood	270		270	85	16.0	5.0	3.2	1.9	Regular	-	-	-	-	-	Typical	-	-	-	-	Typical	-	-	-	-	-	-	Retain	
284	<i>Lophostemon suaveolens</i>	Swamp Box	130		130	41	7.0	3.0	2.0	1.4	Regular	-	-	-	-	-	Typical	-	-	-	-	Typical	-	-	-	-	-	-	Retain	
285	<i>Jacaranda mimosifolia</i>	Jacaranda	170		170	53	7.0	4.0	2.0	1.6	Regular	-	-	-	-	-	Typical	-	-	-	-	Typical	-	-	-	-	-	-	Remove	
286	<i>Corymbia intermedia</i>	Pink Bloodwood	160		160	50	12.0	3.0	2.0	1.5	Regular	-	-	-	-	-	Typical	-	-	-	-	Typical	-	-	-	-	-	-	Retain	



Where this tree schedule conflicts with Tree Retention Plan drawings, tree retention shown on drawing prevails.

Specimen Details										Canopy Condition Details						Trunk Condition Details					Fauna Details and Habitat Value						Additional Details			
Tree ID	Botanical Name	Common Name	Trunk DBH (mm)	Additional Trunks DBH (mm)	Total DBH (mm) [AS 4970-2025]	Trunk Circumference (cm) [AS 4970-2025]	Height (m)	Spread (m)	Tree Protection Zone (m)	Structural Root Zone (m)	Canopy Form	Spreading	Thinning	Die-Back	Epicormic Growth	Lopped	Canopy Health	Leaning	Vines	Trunk Damage	Fire Damage	Trunk Health	Scats	Scratches	Hollows	Nest	Termite Nest	Habitat Value	Retention	Additional Notes
287	<i>Corymbia intermedia</i>	Pink Bloodwood	360		360	113	18.0	8.0	4.3	2.2	Regular	-	-	-	-	-	Typical	-	-	-	-	Typical	-	-	-	-	-	-	Retain	
288	<i>Toona ciliata</i>	Red Cedar	220	200 160	338	106	16.0	8.0	4.1	2.1	Regular	-	-	-	-	-	Typical	-	-	-	-	Typical	-	-	-	-	-	-	Remove	
289	<i>Corymbia intermedia</i>	Pink Bloodwood	320	290	432	136	18.0	8.0	5.2	2.3	Regular	-	-	-	-	-	Typical	-	-	-	-	Typical	-	-	-	-	-	-	Remove	
290	<i>Corymbia intermedia</i>	Pink Bloodwood	350	370	509	160	19.0	10.0	6.1	2.5	Regular	-	-	-	-	-	Typical	-	Introduced	-	-	Typical	-	-	-	-	-	-	Remove	
291	<i>Syagrus romanzoffiana</i>	Cocos Palm	170		170	53	8.0	4.0	2.0	1.6	Regular	-	-	-	-	-	Typical	-	-	-	-	Typical	-	-	-	-	-	-	Remove	
292	<i>Melaleuca bracteata</i>	Black Tea Tree	160	110 120 70 80	252	79	11.0	6.0	3.0	1.9	Regular	-	-	-	-	-	Typical	-	-	-	-	Typical	-	-	-	-	-	-	Remove	
293	<i>Melaleuca bracteata</i>	Black Tea Tree	120	110	163	51	12.0	4.0	2.0	1.5	Regular	-	-	-	-	-	Typical	-	-	-	-	Typical	-	-	-	-	-	-	Remove	
294	<i>Melaleuca bracteata</i>	Black Tea Tree	170	150 140	266	84	10.0	7.0	3.2	1.9	Regular	-	-	-	-	-	Typical	-	-	-	-	Typical	-	-	-	-	-	-	Remove	
295	<i>Melaleuca bracteata</i>	Black Tea Tree	110		110	35	6.0	4.0	2.0	1.3	Regular	-	-	-	-	-	Typical	-	-	-	-	Typical	-	-	-	-	-	-	Remove	
296	<i>Melaleuca bracteata</i>	Black Tea Tree	160	80 150 140	272	86	11.0	6.0	3.3	1.9	Regular	-	-	-	-	-	Typical	-	-	-	-	Typical	-	-	-	-	-	-	Remove	
297	<i>Melaleuca bracteata</i>	Black Tea Tree	270	200 220 100 140	437	137	11.0	9.0	5.2	2.3	Regular	-	-	-	-	-	Typical	-	-	-	-	Typical	-	-	-	-	-	-	Remove	
298	<i>Melaleuca bracteata</i>	Black Tea Tree	140		140	44	8.0	4.0	2.0	1.4	Regular	-	-	-	-	-	Typical	-	-	-	-	Typical	-	-	-	-	-	-	Remove	
299	<i>Allocasuarina littoralis</i>	Black She-oak	330		330	104	15.0	4.0	4.0	2.1	Regular	-	-	-	-	-	Typical	-	-	-	-	Typical	-	-	-	-	-	-	Remove	
300	<i>Celtis cinesis</i>	Chinese Celtis	220		220	69	12.0	6.0	2.6	1.8	Regular	-	-	-	-	-	Typical	-	-	-	-	Typical	-	-	-	-	-	-	Remove	
301	<i>Schefflera actinophylla</i>	Umbrella Tree	100		100	31	7.0	2.0	2.0	1.3	Regular	-	-	-	-	-	Typical	-	-	-	-	Typical	-	-	-	-	-	-	Remove	
302	<i>Dracaena sp.</i>	Dracaena	120		120	38	5.0	3.0	2.0	1.4	Regular	-	-	-	-	-	Typical	-	-	-	-	Typical	-	-	-	-	-	-	Remove	
303	<i>Angophora leiocarpa</i>	Smooth-barked Apple	330		330	104	22.0	11.0	4.0	2.1	Regular	-	-	-	-	-	Typical	-	-	-	-	Typical	-	-	-	-	-	-	Remove	
304	<i>Musa sp.</i>	Banana	130	90 80 80	194	61	5.0	3.0	2.3	1.7	Regular	-	-	-	-	-	Typical	-	-	-	-	Typical	-	-	-	-	-	-	Remove	
305	<i>Corymbia intermedia</i>	Pink Bloodwood	510		510	160	22.0	12.0	6.1	2.5	Regular	-	-	-	-	-	Typical	-	-	-	-	Typical	-	-	-	-	-	-	Retain	
306	<i>Corymbia intermedia</i>	Pink Bloodwood	380		380	119	22.0	10.0	4.6	2.2	Regular	-	-	-	-	-	Typical	-	-	-	-	Typical	-	-	-	-	-	-	Retain	
307	<i>Eucalyptus siderophloia</i>	Northern Grey Ironbark	200		200	63	16.0	5.0	2.4	1.7	Regular	-	-	-	-	-	Typical	-	-	-	-	Typical	-	-	-	-	-	-	Remove	
308	<i>Corymbia intermedia</i>	Pink Bloodwood	340		340	107	16.0	6.0	4.1	2.1	Regular	-	-	-	-	-	Typical	-	-	-	-	Typical	-	-	-	-	-	-	Remove	
309	<i>Corymbia intermedia</i>	Pink Bloodwood	210		210	66	12.0	4.0	2.5	1.7	Regular	-	-	-	-	-	Typical	-	-	-	-	Typical	-	-	-	-	-	-	Remove	
310	<i>Corymbia intermedia</i>	Pink Bloodwood	350		350	110	10.0	4.0	4.2	2.1	Regular	-	-	-	-	-	Typical	-	-	-	-	Typical	-	-	-	-	-	-	Remove	
311	<i>Corymbia intermedia</i>	Pink Bloodwood	510	150	532	167	20.0	11.0	6.4	2.5	Regular	-	-	-	-	-	Typical	-	-	-	-	Typical	-	-	-	-	-	-	Remove	
312	<i>Spathodea campanulata</i>	African Tulip Tree	130		130	41	8.0	3.0	2.0	1.4	Regular	-	-	-	-	-	Typical	-	-	-	-	Typical	-	-	-	-	-	-	Remove	
313	<i>Allocasuarina littoralis</i>	Black She-oak	210		210	66	14.0	5.0	2.5	1.7	Regular	-	-	-	-	-	Typical	-	-	-	-	Typical	-	-	-	-	-	-	Remove	
314	<i>Acacia disparrima</i>	Hickory Wattle	180		180	57	10.0	5.0	2.2	1.6	Regular	-	-	-	-	-	Typical	-	-	-	-	Typical	-	-	-	-	-	-	Retain	
315	<i>Libidibia ferrea</i>	Leopard Tree	300	260	397	125	16.0	7.0	4.8	2.2	Regular	-	-	-	-	-	Typical	-	-	-	-	Typical	-	New	-	-	-	-	Remove	
316	<i>Corymbia torelliana</i>	Cadaghi	150	150	212	67	14.0	4.0	2.5	1.7	Regular	-	-	-	-	-	Typical	-	-	-	-	Typical	-	-	-	-	-	-	Remove	
317	<i>Jacaranda mimosifolia</i>	Jacaranda	180	130	222	70	10.0	4.0	2.7	1.8	Regular	-	-	-	-	-	Typical	-	-	-	-	Typical	-	-	-	-	-	-	Remove	
318	<i>Araucaria cunninghamii</i>	Hoop Pine	440		440	138	20.0	8.0	5.3	2.3	Regular	-	-	-	-	-	Typical	-	-	-	-	Typical	-	-	-	-	Present	-	Remove	
319	<i>Eucalyptus microcorys</i>	Tallowwood	540	260 210	635	200	19.0	9.0	7.6	2.7	Regular	-	-	-	-	-	Typical	-	Native	-	-	Typical	-	-	-	-	-	-	Remove	
320	<i>Lophostemon suaveolens</i>	Swamp Box	370	150	399	125	16.0	6.0	4.8	2.3	Regular	-	-	-	-	-	Typical	-	-	-	-	Typical	-	-	-	-	-	-	Remove	
321	<i>Acacia disparrima</i>	Hickory Wattle	340		340	107	16.0	7.0	4.1	2.1	Regular	-	-	-	-	-	Typical	-	-	-	-	Typical	-	-	-	-	-	-	Remove	
322	<i>Araucaria cunninghamii</i>	Hoop Pine	440		440	138	20.0	8.0	5.3	2.3	Regular	-	-	-	-	-	Typical	-	-	-	-	Typical	-	-	-	-	-	-	Remove	
323	<i>Lophostemon suaveolens</i>	Swamp Box	240		240	75	10.0	4.0	2.9	1.8	Regular	-	-	-	-	-	Typical	-	-	-	-	Typical	-	-	-	-	-	-	Remove	
324	<i>Lophostemon suaveolens</i>	Swamp Box	260		260	82	14.0	5.0	3.1	1.9	Regular	-	-	-	-	-	Typical	-	-	-	-	Typical	-	-	-	-	-	-	Remove	
325	<i>Melaleuca viminialis</i>	Weeping Bottlebrush	210		210	66	10.0	4.0	2.5	1.7	Regular	-	-	-	-	-	Typical	-	-	-	-	Typical	-	-	-	-	-	-	Remove	
326	<i>Citrus x sinensis</i>	Orange	100		100	31	5.0	4.0	2.0	1.3	Regular	-	-	-	-	-	Typical	-	-	-	-	Typical	-	-	-	-	-	-	Remove	
327	<i>Melaleuca viminialis</i>	Weeping Bottlebrush	140		140	44	7.0	4.0	2.0	1.4	Regular	-	-	-	-	-	Typical	-	-	-	-	Typical	-	-	-	-	-	-	Remove	
328	<i>Melaleuca viminialis</i>	Weeping Bottlebrush	160	90	184	58	7.0	3.0	2.2	1.6	Regular	-	-	-	-	-	Typical	-	-	-	-	Typical	-	-	-	-	-	-	Remove	
329	<i>Psidium cattleianum</i>	Strawberry Guava	110	100 90	174	55	8.0	4.0	2.1	1.6	Regular	-	-	-	-	-	Typical	-	-	-	-	Typical	-	-	-	-	-	-	Remove	
330	<i>Ravenala madagascariensis</i>	Traveller's Palm	130	130 120 120 100 100 00 90 90	314	99	9.0	5.0	3.8	2.0	Regular	-	-	-	-	-	Typical	-	-	-	-	Typical	-	-	-	-	-	-	Remove	
331	<i>Ravenala madagascariensis</i>	Traveller's Palm	110	110	156	49	7.0	3.0	2.0	1.5	Regular	-	-	-	-	-	Typical	-	-	-	-	Typical	-	-	-	-	-	-	Remove	
332	<i>Delonix regia</i>	Poinciana	360		360	113	16.0	6.0	4.3	2.2	Regular	-	-	-	-	-	Typical	-	-	-	-	Typical	-	-	-	-	-	-	Remove	
333	<i>Archontophoenix alexandrae</i>	Alexander Palm	340		340	107	12.0	3.0	4.1	2.1	Regular	-	-	-	-	-	Typical	-	-	-	-	Typical	-	-	-	-	-	-	Remove	
334	<i>Mangifera indica</i>	Mango	210	250	326	103	7.0	8.0	3.9	2.1	Regular	-	-	-	-	-	Typical	-	-	-	-	Typical	-	-	-	-	-	-	Remove	
335	<i>Jacaranda mimosifolia</i>	Jacaranda	360		360	113	7.0	10.0	4.3	2.2	Regular	-	-	-	-	-	Typical	-	-	-	-	Typical	-	-	-	-	-	-	Remove	
336	<i>Melaleuca quinquenervia</i>	Broad-leaved Paperbark	520	230 260	625	196	16.0	6.0	7.5	2.7	Regular	-	-	-	-	-	Typical	-	-	-	-	Typical	-	-	-	-	-	-	Remove	
337	<i>Lophostemon suaveolens</i>	Swamp Box	290		290	91	15.0	7.0	3.5	2.0	Regular	-	-	-	-	-	Typical	-	-	-	-	Typical	-	-	-	-	-	-	Remove	
338	<i>Flindersia brayleyana</i>	Queensland Maple	370		370	116	20.0	9.0	4.4	2.2	Regular	-	-	-	-	-	Typical	-	-	-	-	Typical	-	-	-	-	-	-	Remove	
339	<i>Flindersia brayleyana</i>	Queensland Maple	520		520	163	18.0	10.0	6.2	2.5	Regular	-	-	-	-	-	Typical	-	-	-	-	Typical	-	-	-	-	-	-	Remove	
340	<i>Pinus elliotii</i>	Slash Pine	680		680	214	22.0	11.0	8.2	2.8	Regular	-	-	-	-	-	Typical	-	-	-	-	Typical	-	-	-	-	-	-	Remove	
341	<i>Spathodea campanulata</i>	African Tulip Tree	150		150	47	12.0	3.0	2.0	1.5	Regular	-	-	-	-	-	Typical	-	-	-	-	Typical	-	-	-	-	-	-	Remove	
342	<i>Delonix regia</i>	Poinciana	310		310	97	12.0	6.0	3.7	2.0	Regular	-	-	-	-	-	Typical	-	-	-	-	Typical	-	-	-	-	-	-	Remove	
343	<i>Corymbia intermedia</i>	Pink Bloodwood	700		700	220	24.0	12.0	8.4	2.8	Regular	-	-	-	-	-	Typical	-	-	-	-	Typical	-	-	-	-	-	-	Retain	



Where this tree schedule conflicts with Tree Retention Plan drawings, tree retention shown on drawing prevails.

Specimen Details										Canopy Condition Details						Trunk Condition Details					Fauna Details and Habitat Value						Additional Details			
Tree ID	Botanical Name	Common Name	Trunk DBH (mm)	Additional Trunks DBH (mm)	Total DBH (mm) [AS 4970-2025]	Trunk Circumference (cm) [AS 4970-2025]	Height (m)	Spread (m)	Tree Protection Zone (m)	Structural Root Zone (m)	Canopy Form	Spreading	Thinning	Die-Back	Epicormic Growth	Lopped	Canopy Health	Leaning	Vines	Trunk Damage	Fire Damage	Trunk Health	Scats	Scratches	Hollows	Nest	Termite Nest	Habitat Value	Retention	Additional Notes
344	<i>Tipuana tipu</i>	Tipuana	520		520	163	20.0	10.0	6.2	2.5	Regular	-	-	-	-	-	Typical	-	-	-	-	Typical	-	-	-	-	-	-	Remove	
345	<i>Tipuana tipu</i>	Tipuana	450		450	141	20.0	10.0	5.4	2.4	Regular	-	-	-	-	-	Typical	-	-	-	-	Typical	-	-	-	-	-	-	Remove	
346	<i>Delonix regia</i>	Poinciana	700		700	220	18.0	9.0	8.4	2.8	Regular	-	-	-	-	-	Typical	-	-	-	-	Typical	-	-	-	-	-	-	Remove	
347	<i>Pinus elliotii</i>	Slash Pine	610		610	192	24.0	10.0	7.3	2.7	Regular	-	-	-	-	-	Typical	-	-	-	-	Typical	-	-	-	-	-	-	Remove	
348	<i>Flindersia brayleyana</i>	Queensland Maple	310		310	97	18.0	7.0	3.7	2.0	Regular	-	-	-	-	-	Typical	-	-	-	-	Typical	-	-	-	-	-	-	Retain	
349	<i>Pinus elliotii</i>	Slash Pine	510		510	160	22.0	9.0	6.1	2.5	Regular	-	-	-	-	-	Typical	-	-	-	-	Typical	-	-	-	-	-	-	Remove	
350	<i>Lophostemon suaveolens</i>	Swamp Box	160		160	50	10.0	4.0	2.0	1.5	Regular	-	-	-	-	-	Typical	-	-	-	-	Typical	-	-	-	-	-	-	Retain	
351	<i>Pinus elliotii</i>	Slash Pine	510		510	160	24.0	10.0	6.1	2.5	Regular	-	-	-	-	-	Typical	-	-	-	-	Typical	-	-	-	-	-	-	Remove	
352	<i>Tristanopsis laurina</i>	Water Gum	180	170 160 140 140 130	378	119	8.0	6.0	4.5	2.2	Regular	-	-	-	-	-	Typical	-	-	-	-	Typical	-	-	-	-	-	-	Retain	
353	<i>Delonix regia</i>	Poinciana	400		400	126	11.0	6.0	4.8	2.3	Regular	-	-	-	-	-	Typical	-	-	-	-	Typical	-	-	-	-	-	-	Remove (Subject to Future Rehab)	
354	<i>Archontophoenix alexandrae</i>	Alexander Palm	200		200	63	10.0	3.0	2.4	1.7	Regular	-	-	-	-	-	Typical	-	-	-	-	Typical	-	-	-	-	-	-	Remove (Subject to Future Rehab)	
355	<i>Syagrus romanzoffiana</i>	Cocos Palm	310		310	97	12.0	5.0	3.7	2.0	Regular	-	-	-	-	-	Typical	-	-	-	-	Typical	-	-	-	-	-	-	Remove (Subject to Future Rehab)	
356	<i>Archontophoenix alexandrae</i>	Alexander Palm	140		140	44	7.0	3.0	2.0	1.4	Regular	-	-	-	-	-	Typical	-	-	-	-	Typical	-	-	-	-	-	-	Remove (Subject to Future Rehab)	
357	<i>Archontophoenix alexandrae</i>	Alexander Palm	130		130	41	3.0	2.0	2.0	1.4	Regular	-	-	-	-	-	Typical	-	-	-	-	Typical	-	-	-	-	-	-	Remove (Subject to Future Rehab)	
358	<i>Syagrus romanzoffiana</i>	Cocos Palm	280		280	88	16.0	5.0	3.4	1.9	Regular	-	-	-	-	-	Typical	-	-	-	-	Typical	-	-	-	-	-	-	Remove (Subject to Future Rehab)	
359	<i>Toona ciliata</i>	Red Cedar	110	80	136	43	4.0	3.0	2.0	1.4	Regular	-	-	-	-	-	Typical	-	-	-	-	Typical	-	-	-	-	-	-	Remove	
360	<i>Syagrus romanzoffiana</i>	Cocos Palm	210		210	66	15.0	6.0	2.5	1.7	Regular	-	-	-	-	-	Typical	-	-	-	-	Typical	-	-	-	-	-	-	Remove	
361	<i>Syagrus romanzoffiana</i>	Cocos Palm	180		180	57	16.0	6.0	2.2	1.6	Regular	-	-	-	-	-	Typical	-	-	-	-	Typical	-	-	-	-	-	-	Remove	
362	<i>Syagrus romanzoffiana</i>	Cocos Palm	180		180	57	15.0	6.0	2.2	1.6	Regular	-	-	-	-	-	Typical	-	-	-	-	Typical	-	-	-	-	-	-	Remove	
363	<i>Syagrus romanzoffiana</i>	Cocos Palm	160		160	50	17.0	6.0	2.0	1.5	Regular	-	-	-	-	-	Typical	-	-	-	-	Typical	-	-	-	-	-	-	Remove	
364	<i>Syagrus romanzoffiana</i>	Cocos Palm	180		180	57	16.0	6.0	2.2	1.6	Regular	-	-	-	-	-	Typical	-	-	-	-	Typical	-	-	-	-	-	-	Remove	
365	<i>Syagrus romanzoffiana</i>	Cocos Palm	200		200	63	16.0	6.0	2.4	1.7	Regular	-	-	-	-	-	Typical	-	-	-	-	Typical	-	-	-	-	-	-	Remove	
366	<i>Tipuana tipu</i>	Tipuana	710		710	223	17.0	10.0	8.5	2.9	Regular	-	-	-	-	-	Typical	-	-	-	-	Typical	-	-	-	-	-	-	Remove	
367	<i>Brachychiton acerifolius</i>	Illawara Flame Tree	190		190	60	10.0	5.0	2.3	1.6	Regular	-	-	-	-	-	Typical	-	-	-	-	Typical	-	-	-	-	-	-	Retain	
368	<i>Lophostemon suaveolens</i>	Swamp Box	200		200	63	15.0	7.0	2.4	1.7	Regular	-	-	-	-	-	Typical	-	-	-	-	Typical	-	-	-	-	-	-	Retain	
369	<i>Tipuana tipu</i>	Tipuana	900		900	283	17.0	10.0	10.8	3.2	Regular	-	-	-	-	-	Typical	-	-	-	-	Typical	-	-	-	-	-	-	Remove	
370	<i>Archontophoenix alexandrae</i>	Alexander Palm	180		180	57	9.0	3.0	2.2	1.6	Regular	-	-	-	-	-	Typical	-	-	-	-	Typical	-	-	-	-	-	-	Remove (Subject to Future Rehab)	
371	<i>Archontophoenix alexandrae</i>	Alexander Palm	150		150	47	7.0	3.0	2.0	1.5	Regular	-	-	-	-	-	Typical	-	-	-	-	Typical	-	-	-	-	-	-	Remove (Subject to Future Rehab)	
372	<i>Archontophoenix alexandrae</i>	Alexander Palm	210		210	66	9.0	3.0	2.5	1.7	Regular	-	-	-	-	-	Typical	-	-	-	-	Typical	-	-	-	-	-	-	Remove	
373	<i>Mangifera indica</i>	Mango	350	260	436	137	16.0	8.0	5.2	2.3	Regular	-	-	-	-	-	Typical	-	-	-	-	Typical	-	-	-	-	-	-	Remove	
374	<i>Mangifera indica</i>	Mango	260	250 250 130	458	144	10.0	8.0	5.5	2.4	Regular	-	-	-	-	-	Typical	-	-	-	-	Typical	-	-	-	-	-	-	Remove	
375	<i>Toona ciliata</i>	Red Cedar	290		290	91	16.0	6.0	3.5	2.0	Regular	-	-	-	-	-	Typical	-	-	-	-	Typical	-	-	-	-	-	-	Remove	
376	<i>Archontophoenix alexandrae</i>	Alexander Palm	140		140	44	8.0	3.0	2.0	1.4	Regular	-	-	-	-	-	Typical	-	-	-	-	Typical	-	-	-	-	-	-	Remove	
377	<i>Archontophoenix alexandrae</i>	Alexander Palm	140		140	44	7.0	4.0	2.0	1.4	Regular	-	-	-	-	-	Typical	-	-	-	-	Typical	-	-	-	-	-	-	Remove	
378	<i>Archontophoenix alexandrae</i>	Alexander Palm	160		160	50	7.0	3.0	2.0	1.5	Regular	-	-	-	-	-	Typical	-	-	-	-	Typical	-	-	-	-	-	-	Remove	
379	<i>Archontophoenix alexandrae</i>	Alexander Palm	120		120	38	7.0	2.0	2.0	1.4	Regular	-	-	-	-	-	Typical	-	-	-	-	Typical	-	-	-	-	-	-	Remove	
380	<i>Archontophoenix alexandrae</i>	Alexander Palm	140		140	44	7.0	2.0	2.0	1.4	Regular	-	-	-	-	-	Typical	-	-	-	-	Typical	-	-	-	-	-	-	Remove	
381	<i>Archontophoenix alexandrae</i>	Alexander Palm	160		160	50	8.0	2.0	2.0	1.5	Regular	-	-	-	-	-	Typical	-	-	-	-	Typical	-	-	-	-	-	-	Remove	
382	<i>Archontophoenix alexandrae</i>	Alexander Palm	180		180	57	10.0	3.0	2.2	1.6	Regular	-	-	-	-	-	Typical	-	-	-	-	Typical	-	-	-	-	-	-	Remove	
383	<i>Archontophoenix alexandrae</i>	Alexander Palm	140		140	44	6.0	2.0	2.0	1.4	Regular	-	-	-	-	-	Typical	-	-	-	-	Typical	-	-	-	-	-	-	Remove	
384	<i>Archontophoenix alexandrae</i>	Alexander Palm	160		160	50	8.0	3.0	2.0	1.5	Regular	-	-	-	-	-	Typical	-	-	-	-	Typical	-	-	-	-	-	-	Remove	
385	<i>Macadamia integrifolia</i>	Macadamia Nut	130	120 80	194	61	8.0	4.0	2.3	1.7	Regular	-	-	-	-	-	Typical	-	-	-	-	Typical	-	-	-	-	-	-	Remove	
386	<i>Archontophoenix alexandrae</i>	Alexander Palm	150		150	47	8.0	3.0	2.0	1.5	Regular	-	-	-	-	-	Typical	-	-	-	-	Typical	-	-	-	-	-	-	Remove	
387	<i>Archontophoenix alexandrae</i>	Alexander Palm	220		220	69	12.0	3.0	2.6	1.8	Regular	-	-	-	-	-	Typical	-	-	-	-	Typical	-	-	-	-	-	-	Remove	
388	<i>Archontophoenix alexandrae</i>	Alexander Palm	160		160	50	8.0	2.0	2.0	1.5	Regular	-	-	-	-	-	Typical	-	-	-	-	Typical	-	-	-	-	-	-	Remove	
389	<i>Archontophoenix alexandrae</i>	Alexander Palm	170		170	53	9.0	3.0	2.0	1.6	Regular	-	-	-	-	-	Typical	-	-	-	-	Typical	-	-	-	-	-	-	Remove	
390	<i>Archontophoenix alexandrae</i>	Alexander Palm	140		140	44	7.0	3.0	2.0	1.4	Regular	-	-	-	-	-	Typical	-	-	-	-	Typical	-	-	-	-	-	-	Remove	
391	<i>Mangifera indica</i>	Mango	130	60	143	45	7.0	4.0	2.0	1.5	Regular	-	-	-	-	-	Typical	-	-	-	-	Typical	-	-	-	-	-	-	Remove	
392	<i>Mangifera indica</i>	Mango	260	240	354	111	14.0	8.0	4.2	2.1	Regular	-	-	-	-	-	Typical	-	-	-	-	Typical	-	-	-	-	-	-	Remove	
393	<i>Harpulia pendula</i>	Tulipwood	280		280	88	7.0	4.0	3.4	1.9	Regular	-	-	-	-	-	Typical	-	-	-	-	Typical	-	-	-	-	-	-	Retain	
394	<i>Harpulia pendula</i>	Tulipwood	220		220	69	8.0	4.0	2.6	1.8	Regular	-	-	-	-	-	Typical	-	-	-	-	Typical	-	-	-	-	-	-	Retain	
395	<i>Diospyros kaki</i>	Kaki Persimmon	110	130	170	53	4.0	4.0	2.0	1.6	Regular	-	-	-	-	-	Typical	-	-	-	-	Typical	-	-	-	-	-	-	Remove	
396	<i>Dimocarpus longan</i>	Longan	220	140 150 150 110 140	380	120	12.0	9.0	4.6	2.2	Regular	-	-	-	-	-	Typical	-	-	-	-	Typical	-	-	-	-	-	-	Remove	
397	<i>Lophostemon suaveolens</i>	Swamp Box	190		190	60	12.0	5.0	2.3	1.6	Regular	-	-	-	-	-	Typical	-	-	-	-	Typical	-	-	-	-	-	-	Remove	
398	<i>Elaeocarpus reticulatus</i>	Blueberry Ash	120		120	38	5.0	3.0	2.0	1.4	Regular	-	-	-	-	-	Typical	-	-	-	-	Typical	-	-	-	-	-	-	Remove	
399	<i>Lophostemon confertus</i>	Brush Box	180		180	57	9.0	4.0	2.2	1.6	Regular	-	-	-	-	-	Typical	-	-	-	-	Typical	-	-	-	-	-	-	Remove	
400	<i>Syzygium australe</i>	Brush Cherry	120	70	139	44	7.0	3.0	2.0	1.4	Regular	-	-	-	-	-	Typical	-	-	-	-	Typical	-	-	-	-	-	-	Remove	



Where this tree schedule conflicts with Tree Retention Plan drawings, tree retention shown on drawing prevails.

Specimen Details											Canopy Condition Details						Trunk Condition Details					Fauna Details and Habitat Value						Additional Details			
Tree ID	Botanical Name	Common Name	Trunk DBH (mm)	Additional Trunks DBH (mm)	Total DBH (mm) [AS 4970-2025]	Trunk Circumference (cm) [AS 4970-2025]	Height (m)	Spread (m)	Tree Protection Zone (m)	Structural Root Zone (m)	Canopy Form	Spreading	Thinning	Die-Back	Epicormic Growth	Lopped	Canopy Health	Leaning	Vines	Trunk Damage	Fire Damage	Trunk Health	Scats	Scratches	Hollows	Nest	Termite Nest	Habitat Value	Retention	Additional Notes	
401	<i>Elaeocarpus reticulatus</i>	Blueberry Ash	140		140	44	6.0	3.0	2.0	1.4	Regular	-	-	-	-	-	Typical	-	-	-	-	Typical	-	-	-	-	-	-	-	Remove	
402	<i>Syzygium australe</i>	Brush Cherry	100		100	31	6.0	3.0	2.0	1.3	Regular	-	-	-	-	-	Typical	-	-	-	-	Typical	-	-	-	-	-	-	-	Remove	
403	<i>Syzygium australe</i>	Brush Cherry	180		180	57	9.0	4.0	2.2	1.6	Regular	-	-	-	-	-	Typical	-	-	-	-	Typical	-	-	-	-	-	-	-	Remove	
404	<i>Syzygium australe</i>	Brush Cherry	130		130	41	7.0	4.0	2.0	1.4	Regular	-	-	-	-	-	Typical	-	-	-	-	Typical	-	-	-	-	-	-	-	Remove	
405	<i>Syzygium australe</i>	Brush Cherry	130		130	41	8.0	4.0	2.0	1.4	Regular	-	-	-	-	-	Typical	-	-	-	-	Typical	-	-	-	-	-	-	-	Remove	

