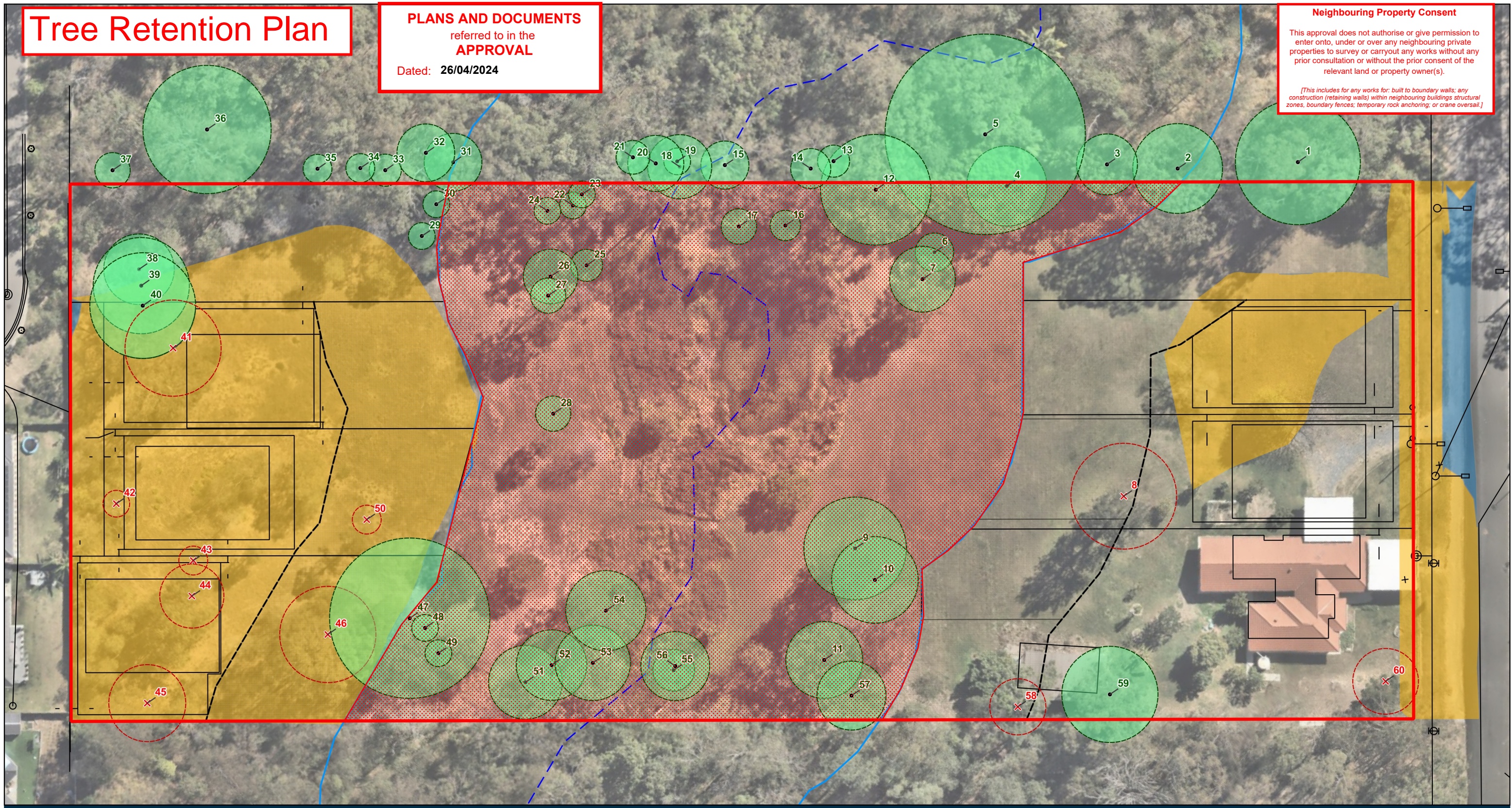


Tree Retention Plan

PLANS AND DOCUMENTS
referred to in the
APPROVAL
Dated: 26/04/2024

Neighbouring Property Consent
This approval does not authorise or give permission to enter onto, under or over any neighbouring private properties to survey or carryout any works without any prior consultation or without the prior consent of the relevant land or property owner(s).
[This includes for any works for: built to boundary walls; any construction (retaining walls) within neighbouring buildings structural zones, boundary fences; temporary rock anchoring, or crane oversail.]



51 Devries Road, Pallara

Legend

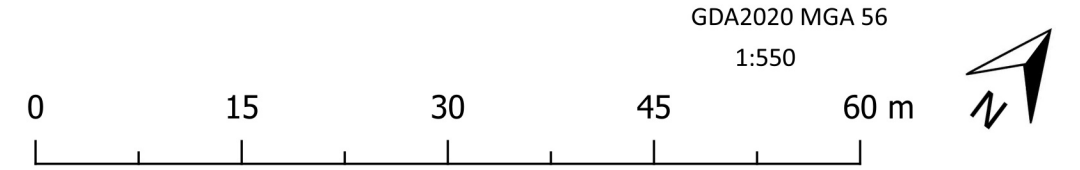
- Site Boundary
- Waterway Corridor
- Watercourse
- Proposed Infrastructure
- 29kW/m² Radiant Heat Flux Contour
- Bushfire Protection Zone
- Proposed Earthwork Fill
- Proposed Earthwork Cut
- Tree to be removed [10]
- Tree to be retained [50]
- Environmental Protection Zone (EPZ)/Environmental Covenant

AMENDED IN RED
24/04/2024

Issue Date	Dwg No.	Author
2023-10-10		JD
Approved		Revision Note
MT		

28 South Project Ref: 2022-075(B)
Source: D:\Dropbox(d) Projects\2022\2022-075(B) (51 Devries Road, Pallara)\(d) Data\GIS

Data Sources: Aerial Imagery (Nearmap/Qld Globe); Digital Cadastre Database (DNRME, 2021); Roads (DNRME, 2020); Watercourse (DNRME, 2020); Contours (DNRME 2016).



Tree ID	Genus	DBH (mm)	Multi stem	Tree Height (m)	Tree Health	Health Comment	Tree Structure	Structure Comment	Habitat Features	Status	Comments	TPZ (m)
1	<i>Eucalyptus seeana</i>	780	No	25	Good	Typical	Good	Typical	No visible habitat features	Retain	off site	9.36
2	<i>Corymbia intermedia</i>	560	No	25	Good	Typical	Good	Typical	No visible habitat features	Retain	off site	6.72
3	<i>Syzygium francisii</i>	380	No	13	Good	Typical	Good	Typical	No visible habitat features	Retain	off site	4.56
4	<i>Corymbia intermedia</i>	500	No	20	Good	Typical	Good	Typical	No visible habitat features	Retain	off site	6
5	<i>Ficus species</i>	1300	No	20	Good	Typical	Good	Typical	No visible habitat features	Retain	benjamina , off site	15
6	<i>Eucalyptus tereticornis</i>	240	No	13	Good	Typical	Good	Typical	No visible habitat features	Retain		2.88
7	<i>Eucalyptus tereticornis</i>	410	No	15	Good	Typical	Good	Typical	No visible habitat features	Retain		4.92
8	<i>Grevillea robusta</i>	660	No	22	Good	Typical	Good	Typical	No visible habitat features	Remove		7.92
9	<i>Grevillea robusta</i>	640	No	22	Good	Typical	Good	Typical	No visible habitat features	Retain		7.68
10	<i>Acacia disparrima</i>	540	No	16	Good	Typical	Good	Typical	No visible habitat features	Retain		6.48
11	<i>Corymbia intermedia</i>	480	No	18	Good	Typical	Good	Typical	No visible habitat features	Retain		5.76
12	<i>Eucalyptus tereticornis</i>	690	No	23	Good	Typical	Good	Typical	No visible habitat features	Retain		8.28
13	<i>Lophostemon suaveolens</i>	200	No	12	Good	Typical	Good	Typical	No visible habitat features	Retain		2.4
14	<i>Lophostemon suaveolens</i>	250	No	12	Good	Typical	Good	Typical	No visible habitat features	Retain	outside fence	3
15	<i>Lophostemon suaveolens</i>	300	No	13	Good	Typical	Good	Typical	No visible habitat features	Retain	outside fence	3.6
16	<i>Eucalyptus tereticornis</i>	190	No	8	Good	Typical	Good	Typical	No visible habitat features	Retain		2.28
17	<i>Lophostemon suaveolens</i>	221	4 stems	9	Good	Typical	Good	Typical	No visible habitat features	Retain	120 120 100 100	2.652
18	<i>Eucalyptus tereticornis</i>	400	No	24	Good	Typical	Good	Typical	No visible habitat features	Retain	outside fence	4.8
19	<i>Melaleuca quinquenervia</i>	130	No	15	Good	Typical	Good	Typical	No visible habitat features	Retain		2
20	<i>Eucalyptus tereticornis</i>	350	No	19	Good	Typical	Good	Typical	No visible habitat features	Retain	outside fence	4.2
21	<i>Corymbia intermedia</i>	210	No	15	Good	Typical	Good	Typical	No visible habitat features	Retain	outside fence	2.52
22	<i>Eucalyptus tereticornis</i>	100	No	7	Good	Typical	Good	Typical	No visible habitat features	Retain		2
23	<i>Eucalyptus tereticornis</i>	160	No	7	Good	Typical	Good	Typical	No visible habitat features	Retain		2
24	<i>Eucalyptus tereticornis</i>	130	No	9	Good	Typical	Good	Typical	No visible habitat features	Retain		2
25	<i>Eucalyptus tereticornis</i>	200	No	10	Good	Typical	Good	Typical	No visible habitat features	Retain		2.4
26	<i>Eucalyptus tereticornis</i>	340	No	14	Good	Typical	Good	Typical	No visible habitat features	Retain		4.08
27	<i>Eucalyptus tereticornis</i>	220	No	12	Good	Typical	Good	Typical	No visible habitat features	Retain		2.64
28	<i>Eucalyptus seeana</i>	220	No	10	Good	Typical	Good	Typical	No visible habitat features	Retain		2.64
29	<i>Eucalyptus tereticornis</i>	110	No	6	Good	Typical	Good	Typical	No visible habitat features	Retain		2
30	<i>Angophora leiocarpa</i>	110	No	6	Good	Typical	Good	Typical	No visible habitat features	Retain		2
31	<i>Corymbia intermedia</i>	360	No	22	Good	Typical	Good	Typical	No visible habitat features	Retain	outside fence	4.32
32	<i>Corymbia intermedia</i>	360	No	22	Good	Typical	Good	Typical	No visible habitat features	Retain	outside fence	4.32
33	<i>Eucalyptus seeana</i>	200	No	14	Good	Typical	Good	Typical	No visible habitat features	Retain		2.4
34	<i>Lophostemon suaveolens</i>	180	No	14	Good	Typical	Good	Typical	No visible habitat features	Retain	outside fence	2.16

Tree ID	Genus	DBH (mm)	Multi stem	Tree Height (m)	Tree Health	Health Comment	Tree Structure	Structure Comment	Habitat Features	Status	Comments	TPZ (m)
35	<i>Eucalyptus seeana</i>	180	No	12	Good	Typical	Good	Typical	No visible habitat features	Retain	outside fence	2.16
36	<i>Eucalyptus seeana</i>	800	No	18	Good	Typical	Good	Typical	Large Hollow	Retain	2 hollows, koala markings	9.6
37	<i>Eucalyptus seeana</i>	220	No	10	Good	Typical	Good	Typical	No visible habitat features	Retain		2.64
38	<i>Eucalyptus seeana</i>	440	No	10	Good	Typical	Good	Typical	No visible habitat features	Retain		5.28
39	<i>Eucalyptus seeana</i>	600	No	20	Good	Typical	Good	Typical	No visible habitat features	Retain		7.2
40	<i>Eucalyptus seeana</i>	660	No	20	Good	Typical	Good	Typical	No visible habitat features	Retain		7.92
41	<i>Eucalyptus seeana</i>	600	No	20	Good	Typical	Good	Typical	No visible habitat features	Remove		7.2
42	<i>Angophora leiocarpa</i>	130	No	8	Good	Typical	Good	Typical	No visible habitat features	Remove		2
43	<i>Angophora leiocarpa</i>	180	No	14	Good	Typical	Good	Typical	No visible habitat features	Remove		2.16
44	<i>Corymbia intermedia</i>	400	No	18	Good	Typical	Good	Typical	No visible habitat features	Remove		4.8
45	<i>Eucalyptus seeana</i>	480	No	22	Good	Typical	Good	Typical	No visible habitat features	Remove		5.76
46	<i>Eucalyptus siderophloia</i>	600	No	25	Good	Typical	Good	Typical	No visible habitat features	Remove		7.2
47	<i>Eucalyptus seeana</i>	1000	No	20	Good	Typical	Good	Typical	No visible habitat features	Retain		12
48	<i>Eucalyptus siderophloia</i>	127	2 stems	14	Good	Typical	Good	Typical	No visible habitat features	Retain	90, 90	2
49	<i>Eucalyptus siderophloia</i>	140	No	12	Good	Typical	Good	Typical	No visible habitat features	Retain		2
50	<i>Eucalyptus siderophloia</i>	180	2 stems	15	Good	Typical	Good	Typical	No visible habitat features	Remove		2.16
51	<i>Eucalyptus tereticornis</i>	460	No	18	Good	Typical	Good	Typical	No visible habitat features	Retain		5.52
52	<i>Corymbia intermedia</i>	440	No	22	Good	Typical	Good	Typical	No visible habitat features	Retain		5.28
53	<i>Corymbia intermedia</i>	470	No	24	Good	Typical	Good	Typical	No visible habitat features	Retain		5.64
54	<i>Eucalyptus tereticornis</i>	500	No	18	Good	Typical	Good	Typical	No visible habitat features	Retain		6
55	<i>Eucalyptus seeana</i>	260	No	16	Good	Typical	Good	Typical	No visible habitat features	Retain		3.12
56	<i>Eucalyptus seeana</i>	430	No	16	Good	Typical	Good	Typical	No visible habitat features	Retain		5.16
57	<i>Angophora leiocarpa</i>	430	No	24	Good	Typical	Good	Typical	No visible habitat features	Retain		5.16
58	<i>Angophora leiocarpa</i>	350	No	20	Good	Typical	Good	Typical	No visible habitat features	Remove		4.2
59	<i>Eucalyptus seeana</i>	600	No	24	Good	Typical	Good	Typical	No visible habitat features	Retain		7.2
60	<i>Araucaria bidwilli</i>	410	No	18	Good	Typical	Good	Typical	No visible habitat features	Remove		4.92